

# Illinois Job Index: MSA Report



## Illinois Coalition for Jobs, Growth & Prosperity

Release  
**7/30/2007**

data  
**Jan 1990 / Jun 2007**

Issue  
**10.7**

[www.jobsillinois.us](http://www.jobsillinois.us)

As a companion to the July 2007 Illinois Job Index that reports a **Positive** Rating, this MSA Report provides a localized picture on Illinois job growth and allows for comparisons between local economies, Illinois, Nation and Rest of the Midwest.

	Total non-farm employment	May 2007 – Jun 2007		Last 12 months	
		Growth Rate (%)	Number of Jobs	Growth Rate (%)	Number of Jobs
<b>July 2007</b>	Illinois non-Metro (Rural)	+2.06	+10,800	+3.30	+17,100
	Illinois non-Chicago (Downstate)	+0.66	+11,300	+1.39	+23,600
	Illinois Metro	+0.03	+1,600	+0.79	+42,800
	Illinois	+0.21	+12,400	+1.01	+59,900
	Rest of Midwest (RMW)	+0.11	+21,300	- 0.03	- 6,400
	Nation	+0.10	+132,000	+1.48	+2,008,000

The Illinois Coalition for Jobs, Growth & Prosperity publishes the monthly Illinois Job Index and MSA Report as tools for elected officials, policy leaders and the public. We can better understand the Illinois economy and business climate by comparing and measuring Illinois employment growth rates against those of the Rest of the Midwest (RMW: Indiana, Iowa, Michigan, Missouri, Ohio and Wisconsin) and the Nation. Data and analysis is provided by the Illinois Economic Observatory / Regional Economics Applications Laboratory, University of Illinois. The MSA data (unless noted) were seasonally adjusted to be consistent with state totals.

## Talking Points

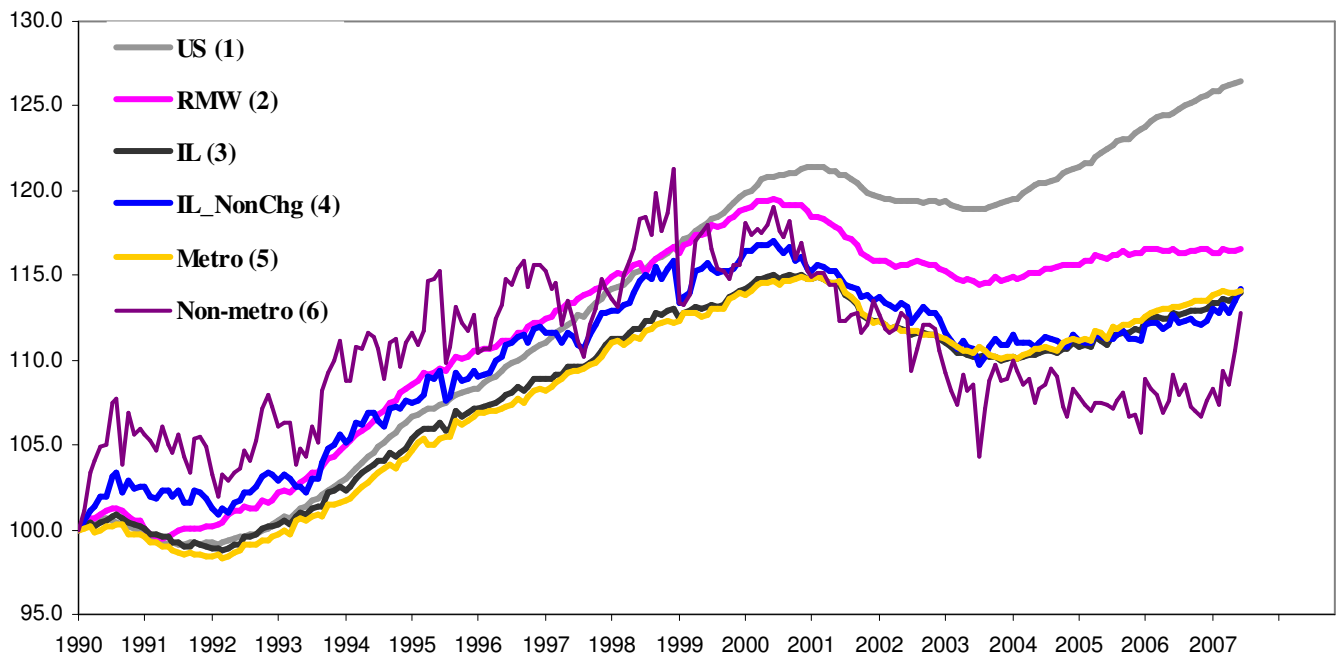
### State, Downstate & Metro

- Illinois maintained a positive trend by adding 12,400 jobs at 0.21% in June. This is the second largest number of jobs added to the Illinois payroll in 2007.
- As with the previous month, the 0.21% growth rate of Illinois resulted from a mixed performance of the Metro areas and the counterparts like Chicago versus Downstate or Metro versus Non-metro.
- Continuing its positive growth from May, Downstate grew by 0.66% adding 11,300 jobs in June. Chicago, based on revised data, showed a small gain in performance by adding 1,100 new jobs at 0.03% in June compared to a 0.01% growth in May.
- Illinois non-metro registered a 2.06% growth by adding 10,800 jobs in June as opposed to a 1.79% growth in May. Illinois Metro, however, recorded a 0.03% growth by adding 1,600 jobs in June, a small improvement from a 0.02% growth in May.
- As reported in June, Illinois registered 1.01% growth over the last 12-months by adding 59,900 jobs.
- Through June, Metro and Non-metro grew by 0.79% and 3.30% over last 12 months adding 42,800 and 17,100 jobs respectively. By adding 36,300 jobs at 0.86%, Chicago registered its lowest job gain over a 12-month period since July 2005.

### MSA page (2-4)

- Illinois Metro had a 0.03% overall growth in June. Among the MSAs, net gains were recorded for three and net losses for five and the remaining two showed no change. Metro-East added 1,700 jobs at 0.70% followed by Chicago and Bloomington-Normal which added 1,100 and 100 jobs at 0.03% and 0.11% respectively.
- Bloomington-Normal recorded the highest growth, 0.11%, up from a -0.22% loss in May. Springfield and Davenport-Rock Island-Moline recovered from -0.25% and -0.11% loss in May to a zero growth in June. Kankakee, however, registered the deepest fall in performance by 0.09% down from a 0.08% growth in May.
- Among the MSAs, Peoria lost the most jobs, 400 (-0.22%), followed by Champaign-Urbana and Kankakee both of which lost 300 jobs at -0.27% and -0.68% respectively.
- Metro-East registered the fastest growth of 1.93% over last 12 months by adding 4,600 Jobs. Chicago followed with a 0.86% growth rate. Chicago, however, the biggest contributor among the MSAs, adding 36,300 jobs followed by Metro-East which added 4,600 jobs in that period. Davenport –Rock Island-Moline, Kankakee and Springfield registered net losses.

## Total non-farm Employment growth rate Jan 1990 – Jun 2007



## Talking Points

### State, Downstate & Metro

- The Illinois job market, except for an interruption in April 2007, has consistently expanded since November 2006, and has remained on an upward trend since early 2004.
- The average growth rate for Metro in 2007, 0.08%, is close to the 2006 average of 0.09%. Non-metro, however, did notably better in 2007 (0.79% average) compared to 2006 (0.15% average).
- Due to better performance of Illinois compared to RMW in 2006 and 2007 to date, the gap in their job indices narrowed in June to the lowest gap since July 1994.
- As regards the trend for Downstate, the average growth in 2007 of 0.28% until June is much higher than the average in 2006 of 0.09%.

## By MSA

Total non-farm employment Seasonally adjusted unless noted*	May 2007 – Jun 2007			Last 12 months	
	Change compared to Illinois	Growth Rate %	Number Of Jobs	Growth Rate %	Number of Jobs
Bloomington-Normal (B-N)	-	0.11	100	0.22	200
Champaign-Urbana (C-U-R)	-	- 0.27	- 300	0.63	700
Chicago	-	0.03	1,100	0.86	36,300
Davenport-Rock Island-Moline (D-R-M)	-	0	0	-0.21	- 400
Decatur	-	- 0.18	- 100	0.18	100
Kankakee	-	- 0.68	- 300	- 0.23	- 100
Peoria	-	- 0.22	- 400	0.38	700
Rockford	-	0	0	0.63	1,000
Springfield	-	-0.18	-200	- 0.27	- 300
Metro-East*	+	0.70	1,700	1.93	4,600
<b>Illinois</b>		<b>0.21</b>	<b>12,400</b>	<b>1.01</b>	<b>59,900</b>

# MSA League Tables\*: Non-farm Employment Growth Rate

## Monthly growth:

Rank	May 2007		June 2007	Rank
1	Metro-East (0.63%)		Metro-East (0.70%)	1
2	Champaign-Urbana-Rantoul (0.18%)		Bloomington -Normal (0.11%)	2
3	Peoria (0.11%)		Chicago (0.03%)	3
4	Chicago (0.01%)		Rockford (0%)	4
5	Kankakee (0%)		Davenport -Rock Island-Moline (0%)	5
6	Davenport -Rock Island-Moline (-0.11%)		Decatur (-0.18%)	6
7	Decatur (-0.18%)		Springfield (- 0.18%)	7
8	Springfield (- 0.18%)		Peoria (-0.22%)	8
9	Bloomington -Normal (-0.22%)		Champaign-Urbana-Rantoul (-0.27%)	9
10	Rockford (-0.25%)		Kankakee (-0.68%)	10

## Growth over last 12-months:

Rank	May 2007		June 2007	Rank
1	Rockford (1.21%)		Metro-East (1.93%)	1
2	Peoria (1.20%)		Chicago (0.86%)	2
3	Kankakee (1.15%)		Champaign-Urbana-Rantoul (0.63%)	3
4	Chicago (1.00%)		Rockford (0.63%)	4
5	Decatur (0.92%)		Peoria (0.38%)	5
6	Metro-East (0.88%)		Bloomington -Normal (0.22%)	6
7	Champaign-Urbana-Rantoul (0.54%)		Decatur (0.18%)	7
8	Bloomington -Normal (0.33%)		Davenport -Rock Island-Moline (-0.21%)	8
9	Springfield (0.18%)		Kankakee (-0.23%)	9
10	Davenport -Rock Island-Moline (-0.05%)		Springfield (- 0.27%)	10

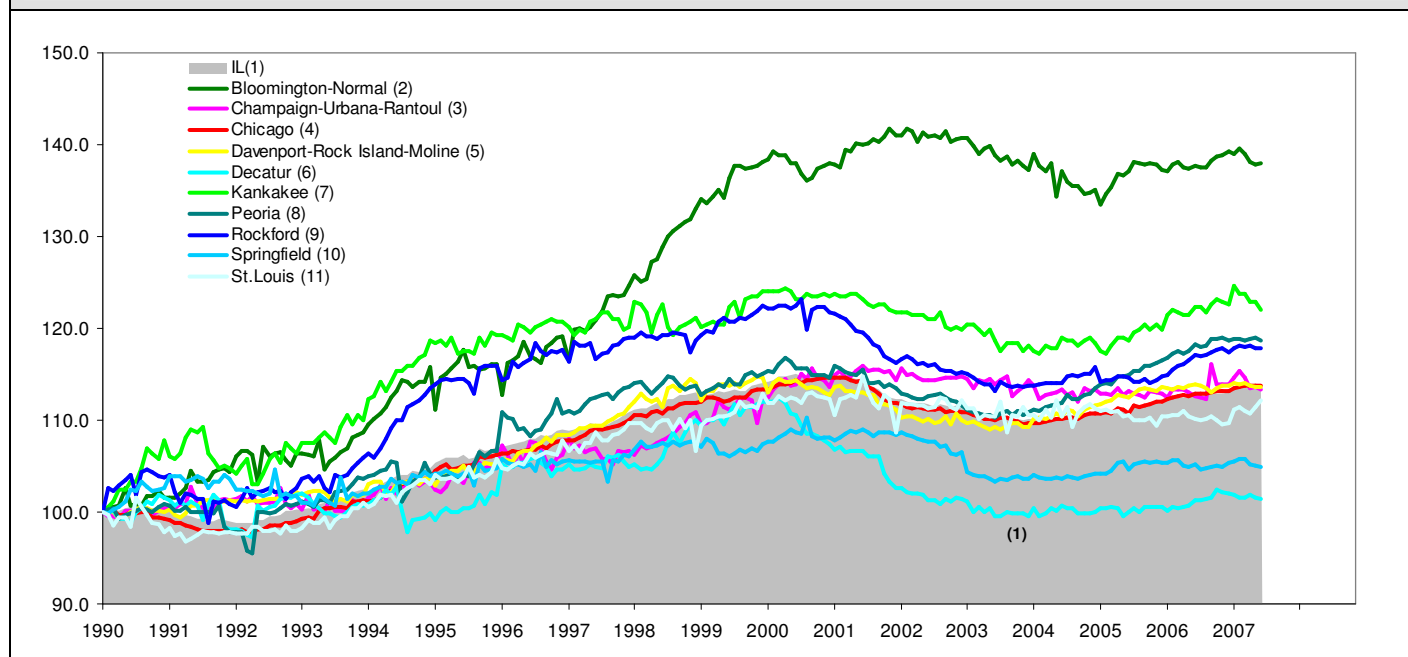
## Talking Points

### MSA League Tables

- Metro-East, the top performer in May retained its position in June whereas the Champaign-Urbana-Rantoul, Peoria and Kankakee slipped down from 2<sup>nd</sup>, 3<sup>rd</sup> and 5<sup>th</sup> position to 9<sup>th</sup>, 8<sup>th</sup> and 10<sup>th</sup> position respectively.
- Bloomington-Normal and Rockford jumped from 9<sup>th</sup> and 10<sup>th</sup> position to 2<sup>nd</sup> and 4<sup>th</sup> position respectively.
- Davenport-Rock Island-Moline (6<sup>th</sup>), Decatur (7<sup>th</sup>) and Springfield (8<sup>th</sup>) retained their relative position with respect to each other while each of them jumped up by one position.
- For the last 12 months growth league table, the top three performers in May, Rockford, Peoria and Kankakee moved down to 4<sup>th</sup>, 5<sup>th</sup> and 9<sup>th</sup> position respectively.
- While Metro-East made the greatest leap in the rankings (6<sup>th</sup> to 1<sup>st</sup>), Kankakee recorded the greatest decline.
- Decatur (5<sup>th</sup> to 6<sup>th</sup>) and Springfield (9<sup>th</sup> to 10<sup>th</sup>) are the two other MSAs to lose ground.
- Chicago (4<sup>th</sup> to 3<sup>rd</sup>), Metro-East (6<sup>th</sup> to 1<sup>st</sup>), Champaign-Urbana-Rantoul (7<sup>th</sup> to 3<sup>rd</sup>), Bloomington-Normal (8<sup>th</sup> to 6<sup>th</sup>) and Davenport-Rock Island-Moline (10<sup>th</sup> to 8<sup>th</sup>) all gained.

\*MSA League Tables are based on revised employment data.

## Total non-farm Employment growth rate Jan 1990 – Jun 2007



Shaded area on above chart represents Illinois growth.

MSA DESCRIPTION: **Bloomington-Normal (B-N):** McLean Co. **Champaign-Urbana (C-U-R):** Champaign Co., Ford Co. & Piatt Co. **Chicago:** Cook Co. IL, DeKalb Co. IL, DuPage Co. IL, Grundy Co. IL, Kane Co. IL, Kendall Co. IL, Lake Co. IL, McHenry Co. IL, Will Co. IL & Kenosha Co. WI **Davenport-Moline-Rock Island (D-R-M):** Henry Co. IL, Mercer Co. IL, Rock Island Co. IL & Scott Co. IA **Decatur:** Macon Co. **Kankakee:** Kankakee Co. **Metro-East:** Bond Co., Calhoun Co., Clinton Co., Jersey Co., Macoupin Co., Madison Co., Monroe Co. & St. Clair Co. **Peoria-Pekin (Peoria):** Marshall Co., Peoria Co., Stark Co., Tazewell Co. & Woodford Co. **Rockford:** Boone Co. & Winnebago Co. **Springfield:** Menard Co. & Sangamon Co.

The MSA data (unless noted) were seasonally adjusted to be consistent with state totals.

**ABOUT:** The Illinois Coalition for Jobs, Growth & Prosperity is a not-for-profit 501-c-4 organization. Coalition founding members include the Chicagoland Chamber of Commerce, the Illinois Business Roundtable, the Illinois Civil Justice League, the Illinois Manufacturers' Association, and the Illinois State Chamber of Commerce. Established to provide Illinois voters with information about government-related issues that have a direct effect on jobs, the Coalition represents firms employing more than a million Illinois workers.