

Illinois Job Index



Illinois Coalition for Jobs, Growth & Prosperity

Release
12/22/2008


Data
Jan 1990 / Nov 2008

Issue
2008.12

www.real.uiuc.edu

For the December 2008 Illinois Job Index, the Coalition issued a negative rating. The nation continued with a negative growth for the eleventh consecutive month. RMW also posted a negative growth.

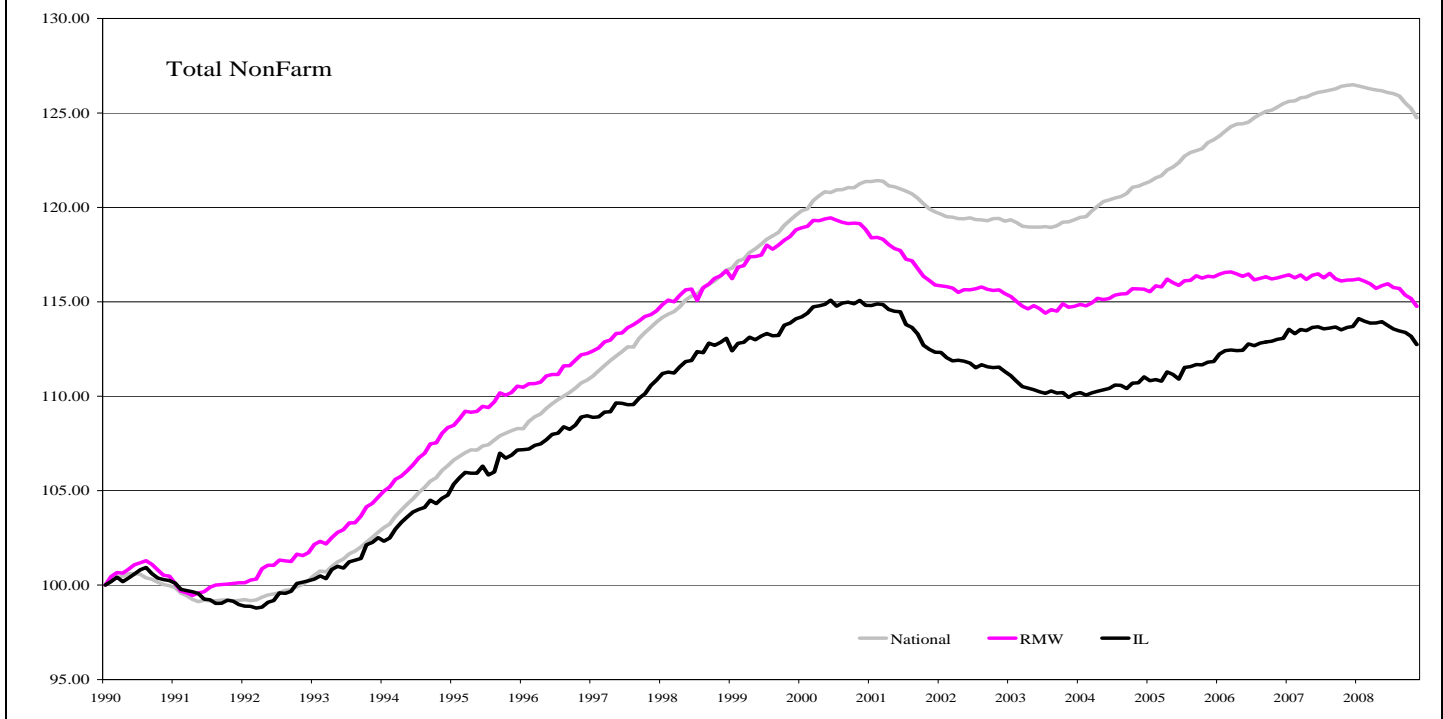
The Illinois Coalition for Jobs, Growth & Prosperity publishes the monthly Illinois Job Index and MSA Report as tools for elected officials, policy leaders and the public. We can better understand the Illinois economy and business climate by comparing and measuring Illinois employment growth rates against those of the Rest of the Midwest (RMW: Indiana, Iowa, Michigan, Missouri, Ohio and Wisconsin) and the Nation. Data and analysis is provided by the Illinois Economic Observatory / Regional Economics Applications Laboratory, University of Illinois.

	December 2008 Negative		Oct 2008 - Nov 2008		Last 12 months	
		Total non-farm employment	Growth Rate %	Number of Jobs	Growth Rate%	Number of Jobs
		Nation	-0.39	-533,000	-1.35	-1,870,000
		RMW	-0.36	-71,700	-1.20	-237,700
		Illinois	-0.39	-23,000	-0.79	-47,300

Talking Points

Illinois Notes	<ul style="list-style-type: none"> ▪ In November 2008, Illinois lost 23,000 jobs at a rate of -0.39%. This is the largest monthly loss since 2002. ▪ Illinois has posted negative job changes eight times in 2008, and the state has lost 50,100 jobs since January, 2008. ▪ By the end of November, Illinois averaged a monthly growth of -0.08% in 2008, which is smaller than both the average growth rate for 2007 of 0.05%, and the average growth rate in recent recovery period for Illinois since early 2004 of 0.07%. ▪ Illinois, RMW, and the nation all lost jobs for the fifth consecutive month. ▪ Over the last 12 months, Illinois payroll growth was -0.79%, better than the negative -1.35% growth of the nation. RMW continued with a negative rating of -1.20% for fifteen months in a row. ▪ Illinois has lost -4,555 jobs on average per month in 2008 so far, compared to 2,742 job increase per month in 2007. ▪ Through November 2008, the cumulative job growth for the nation, Illinois and RMW compared to January 1900 stood at 24.75%, 12.74%, and 14.76%, respectively.
Nation Notes	<ul style="list-style-type: none"> ▪ The nation lost 533,000 jobs in November, the largest monthly job loss since December 1974. This loss is larger than the forecast by economists of a loss of 325,000 jobs. ▪ The nation has posted net job losses for eleventh consecutive months. The net job loss for 2008 is 1,911,000 so far, with seventy percent of that occurring in the last four months. ▪ The nation lost -1,870,000 jobs at -1.35% over last 12-month period. ▪ While through November the nation posted negative growth for eleventh months in a row with average growth rate -0.13%, the average growth rate for 2007 was 0.07% and the average for the recent recovery period for the nation since September 2003 was 0.12%.

Total non-farm Employment growth rate Jan 1990 - Nov 2008



Total no-farm Employment and Employment Index

	November 2008 Number of Jobs	Current Index to Jan 1990	Previous Peak Index to Jan 1990	Changes in Jobs since Jan 1990	Changes in Jobs since Pervious Peak
Nation	136,167,000	124.75	121.45 (Feb-2001)	27,016,000	3,637,000
RMW	19,606,700	114.76	119.44 (Jun-2000)	2,521,500	-800,400
Illinois	5,936,400	112.74	115.08 (Nov-2000)	670,800	-123,000

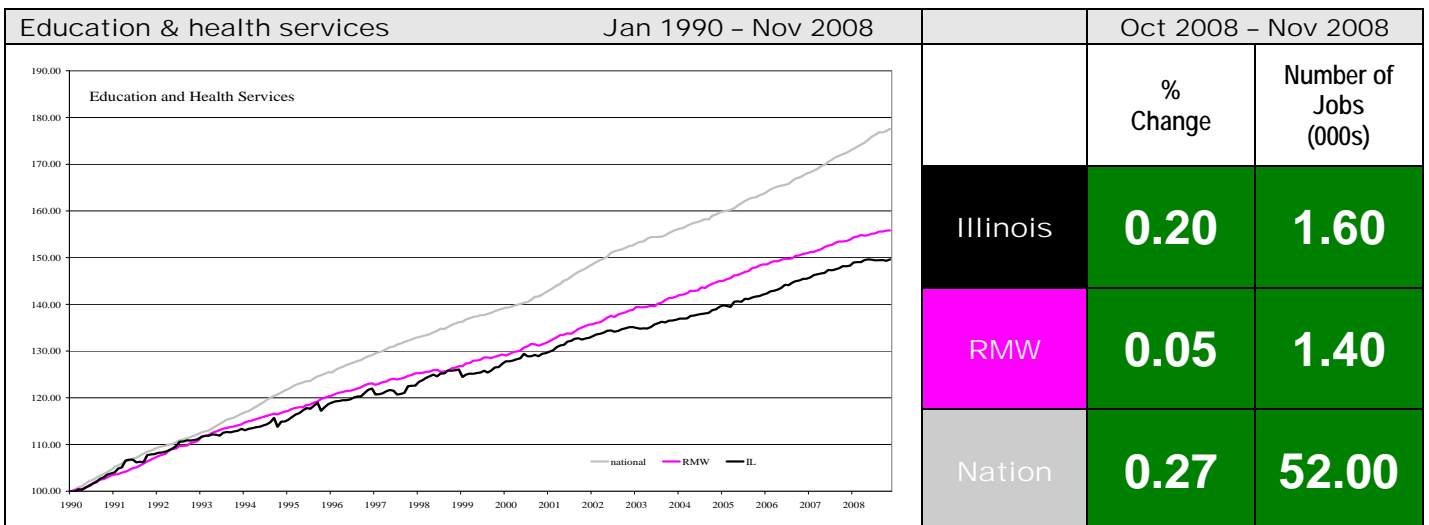
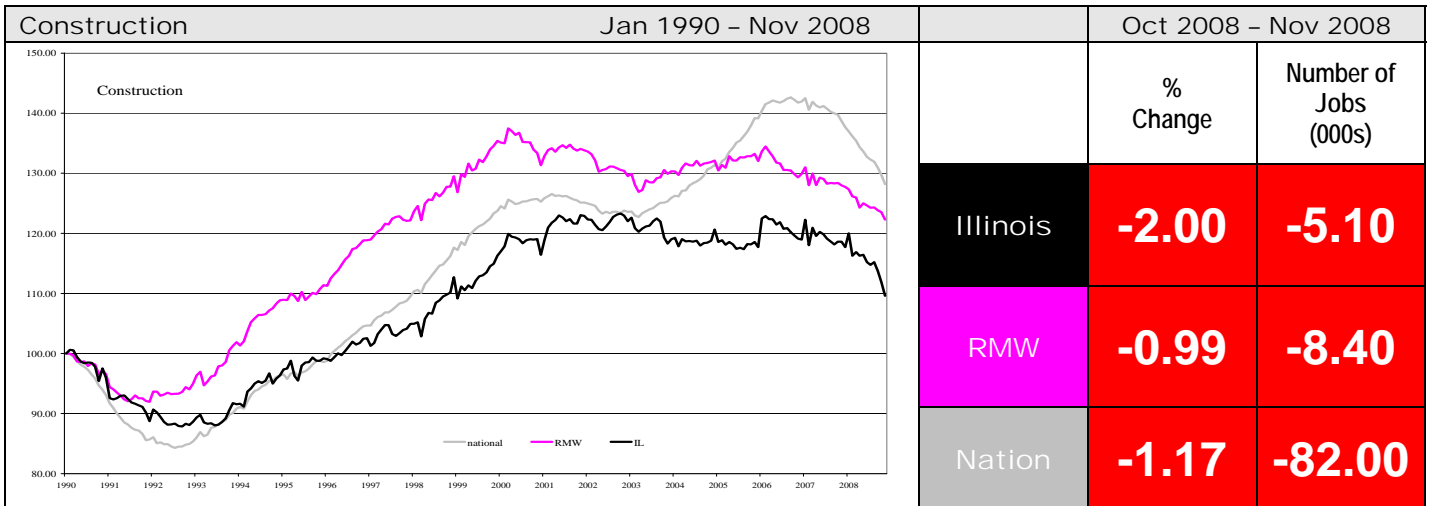
By employment sector:

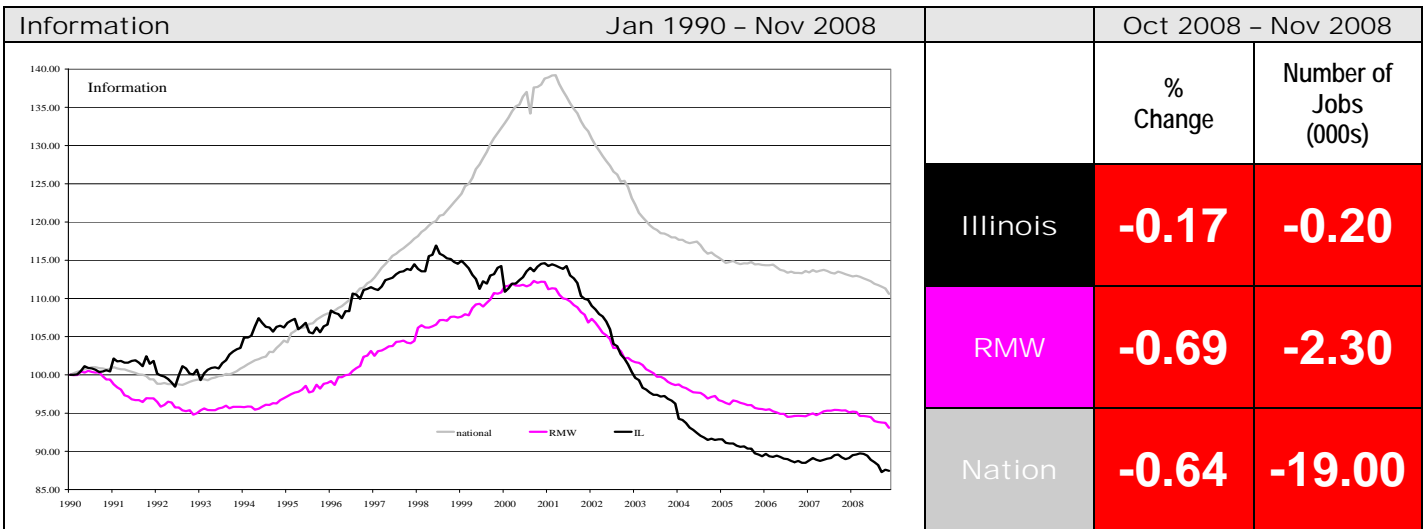
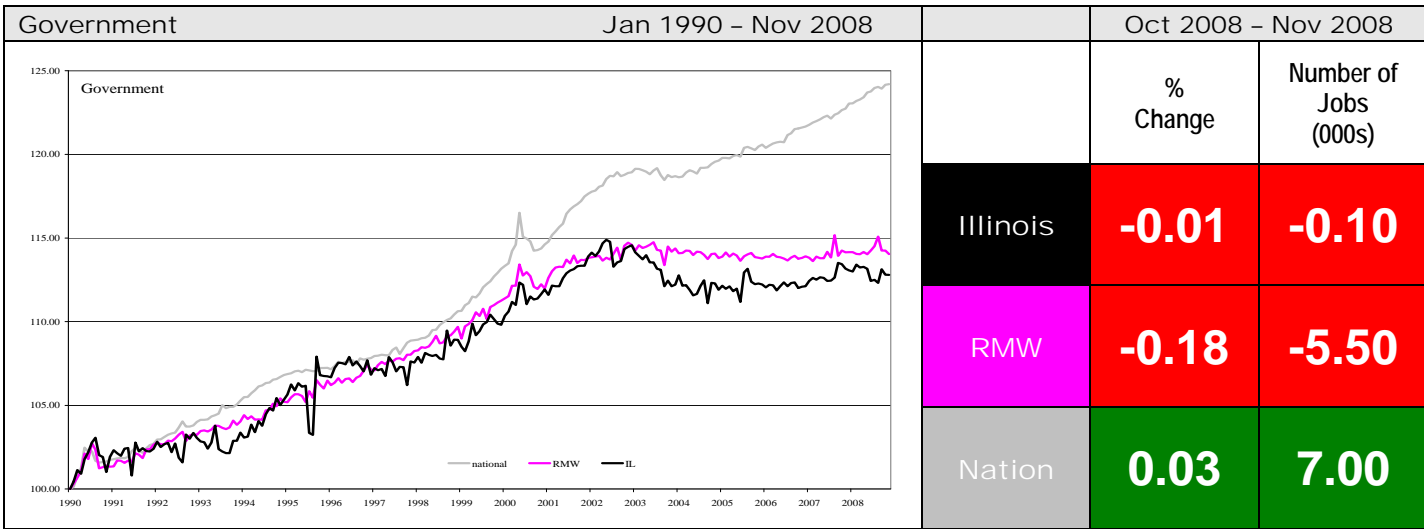
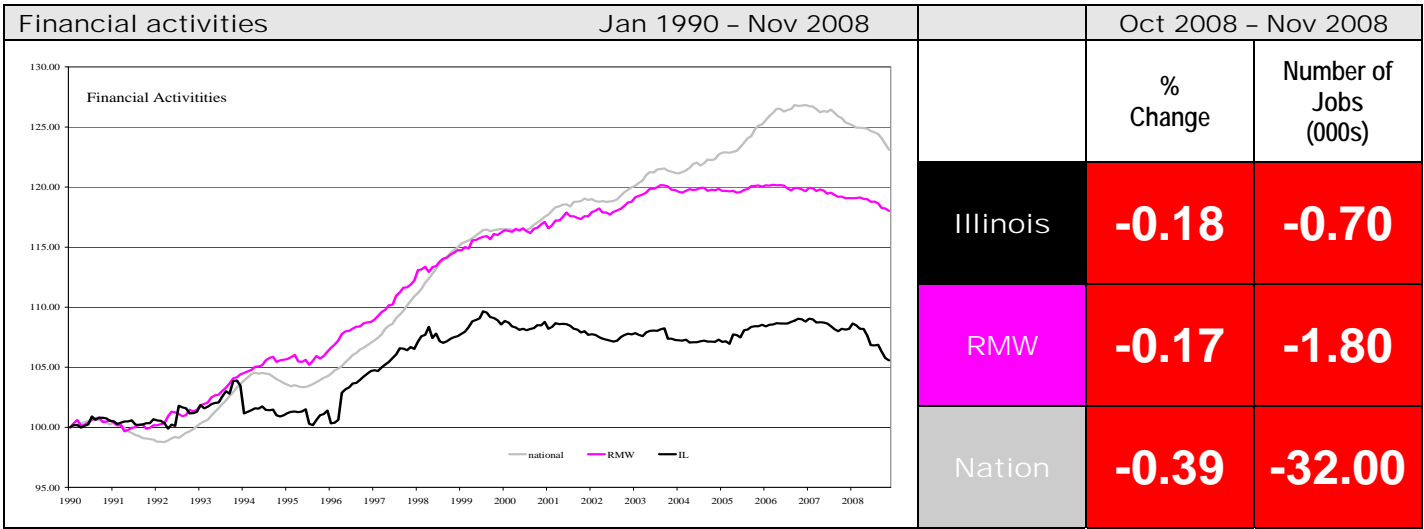
Total non-farm Employment growth rate by sector

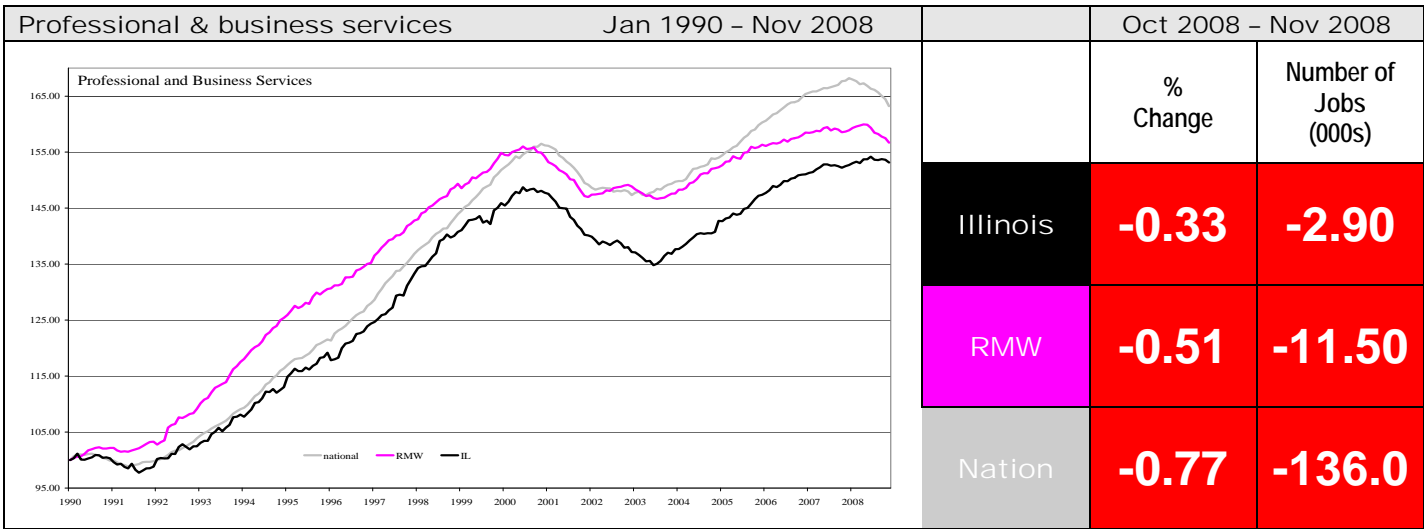
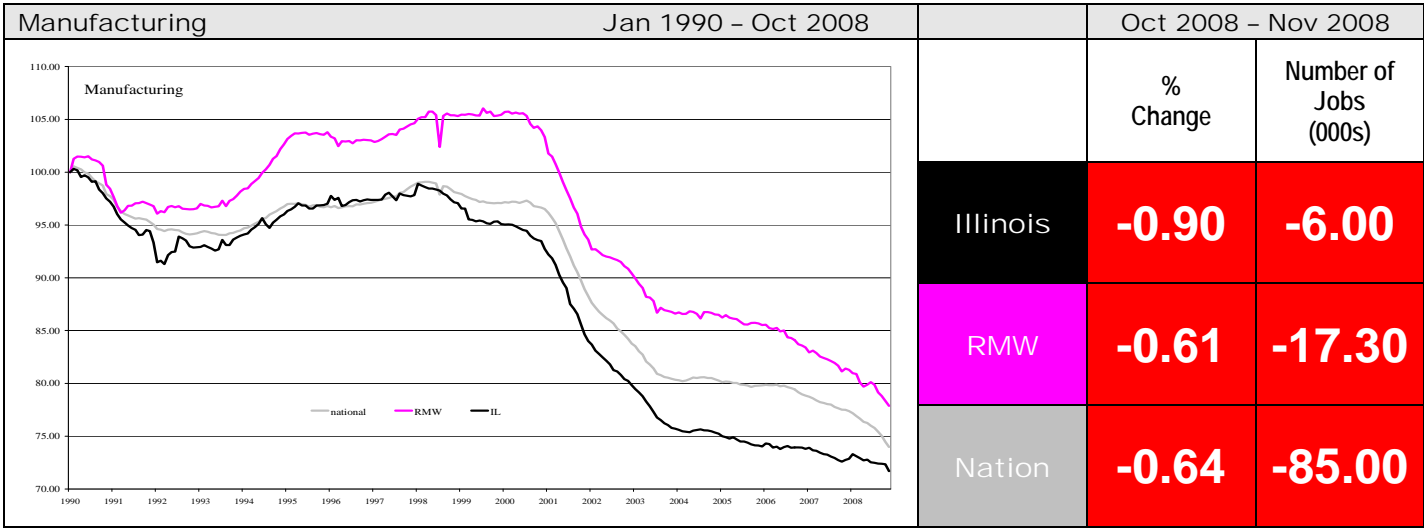
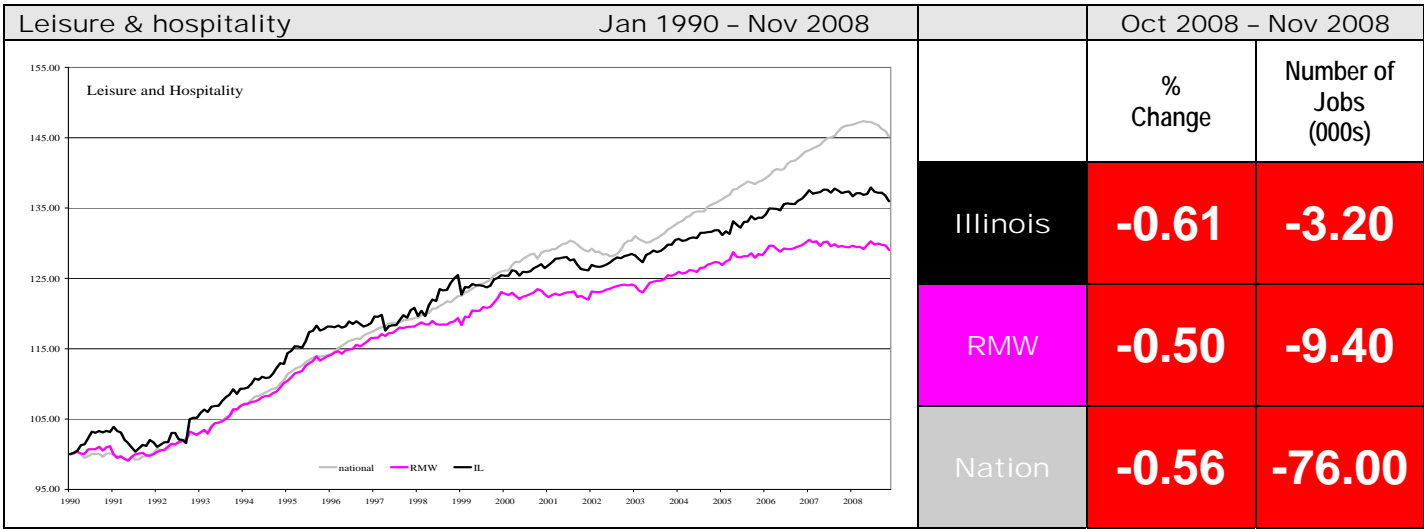
Monthly growth rates	Oct 2008 - Nov 2008			Jan 1990 - Nov 2008					
	Illinois vs. RMW	Illinois vs. Nation	Midwest vs. Nation	Illinois				RMW	Nation
				vs. RMW	vs. Nation	Number of Jobs	Rate %	Rate %	Rate %
Construction	-	-	-	-	-	21,900	9.63	22.31	28.22
Education & health	+	-	-	-	-	262,600	49.63	55.85	77.59
Financial activities	-	+	+	-	-	20,800	5.58	18.02	23.10
Government	+	-	-	-	-	96,500	12.80	14.05	24.02
Information	+	+	+	-	-	-16,400	-12.56	-6.92	10.60
Leisure & hospitality	-	-	+	+	-	138,800	35.96	29.05	45.17
Manufacturing	-	-	-	-	-	-261,400	-28.30	-22.13	-26.02
Professional & business services	+	+	+	-	-	303,300	53.14	56.70	63.20
Trade, transportation & utilities (TTU)	+	+	+	-	-	59,700	5.20	8.17	14.29
Other Services	-	-	+	+	-	53,400	26.00	21.14	30.63

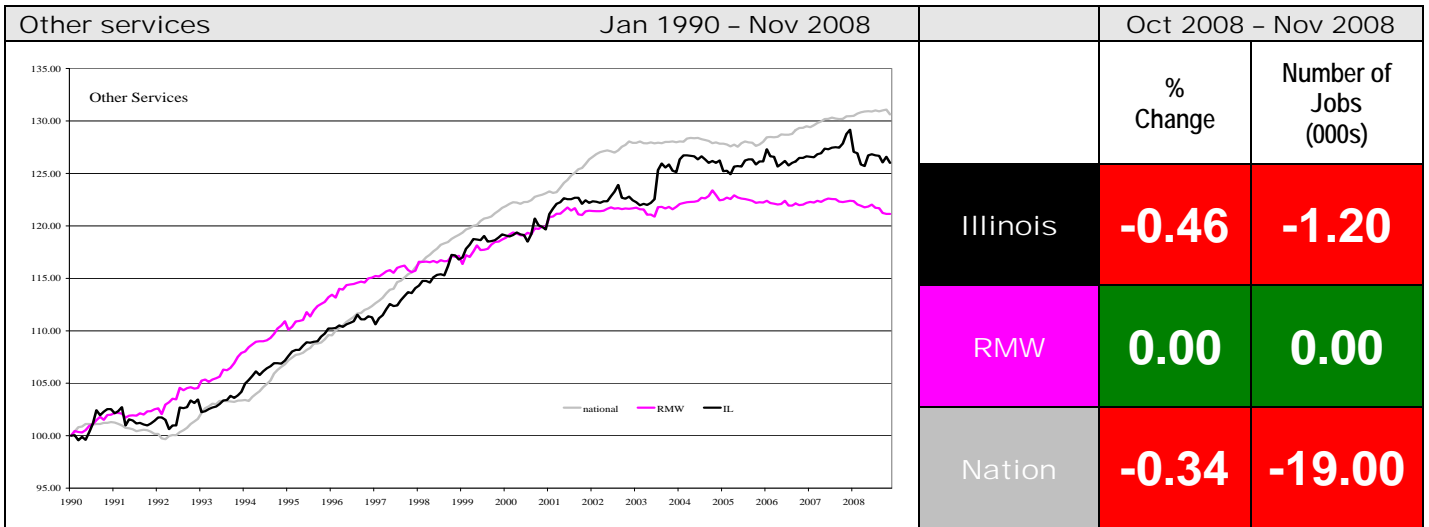
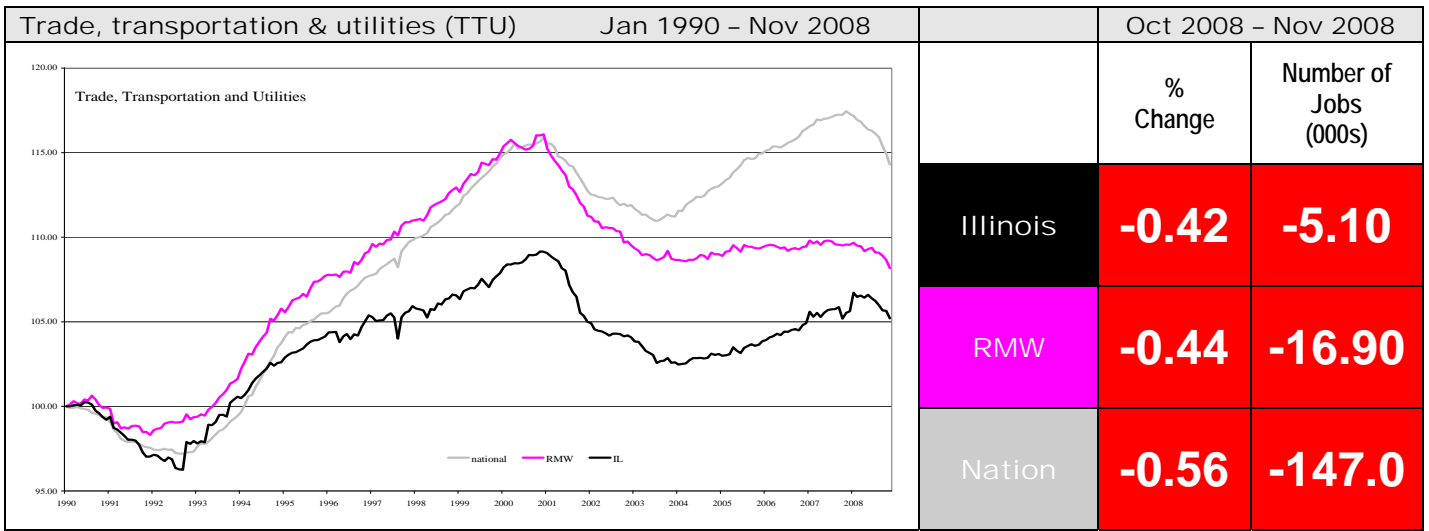
Sector notes

- Illinois posted a job decline of -0.39% in November 2008. Only one sector recorded net gain, while the rest of the nine sectors faced net losses. Compared to October, performance gains were recorded for Information (-.56% to -0.18%), Education and Health Services (-0.13% to 0.20%), and Government (-0.32% to -0.01%), whereas Manufacturing (-0.06% to -0.90%), Other Services (0.39% to -0.46%), and Information (0.26% to -0.17%) faced major losses in performance.
- In November, notable gains at the national level were recorded for the following sectors:
 - Education and Health Services: 52,000 (0.27%)
 - Government: 7,000 (0.03%)
- Major losses at the national level in November were:
 - Manufacturing: -85,000 (-0.64%)
 - Professional & business services s: -136,000 (-0.77%)
 - Construction: -82,000 (-1.17%)
- For Illinois, the following sector was the only one to post job gains:
 - Education and Health Services: 1,600 (0.20%)
- Following are the major sectors that lost jobs in November:
 - Manufacturing: -6,000 (-0.90%)
 - Construction: -5,100 (-2.00%)
 - Trade, transportation & utilities: -5,100 (-0.42%)
- For Illinois, in terms of 12-months aggregated account, Construction, Manufacturing, Trade, transportation & utilities, Financial activities, Information, Government, Other Services, and Leisure and Hospitality, recorded net losses. Education & health services and Professional & business services were the two positive contributors.









ABOUT: The Illinois Coalition for Jobs, Growth & Prosperity is a not-for-profit 501-c-4 organization. Coalition founding members include the Chicagoland Chamber of Commerce, the Illinois Business Roundtable, the Illinois Civil Justice League, the Illinois Manufacturers' Association, and the Illinois State Chamber of Commerce. Established to provide Illinois voters with information about government-related issues that have a direct effect on jobs, the Coalition represents firms employing more than a million Illinois workers.