


Illinois Job Index

Release 12/21/2009	Data Jan 1990 / Nov 2009	Issue 2009.12	www.real.uiuc.edu
-----------------------	-----------------------------	------------------	-------------------

For the December 2009 Illinois Job Index, a negative rating continues. Nation lost jobs as well. However, the RMW has the biggest single month job increase rate since 2006.

The monthly Illinois Job Index and MSA Report are issued monthly as tools for elected officials, policy leaders and the public. The objective is to enhance the understanding of the Illinois economy and business climate by comparing and measuring Illinois employment growth rates against those of the Rest of the Midwest (RMW: Indiana, Iowa, Michigan, Missouri, Ohio and Wisconsin) and the Nation. Data and analysis is provided by the Illinois Economic Observatory / Regional Economics Applications Laboratory, University of Illinois.

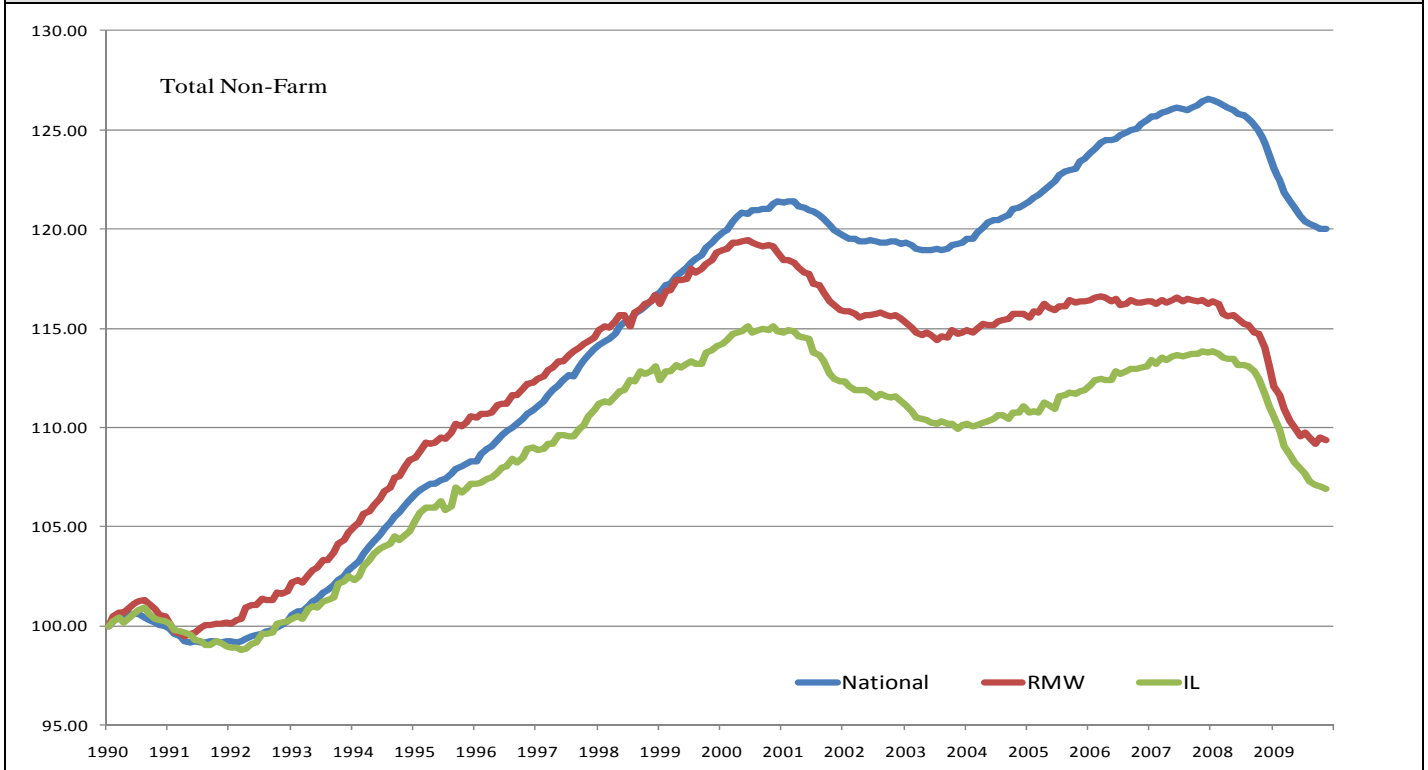
	Dec 2009 Negative		Oct 2009–Nov 2009		Last 12 months		Nov 2009
		Total non-farm employment	Growth Rate %	Number of Jobs	Growth Rate%	Number of Jobs	Shadow U.R. *
		Nation	-0.01	-11,000	-3.51	-4,759,000	12.2%
		RMW	-0.12	-22,800	-4.09	-796,500	14.4%
		Illinois	-0.11	-6,300	-4.26	-250,400	13.0%

*REAL has estimated a *shadow unemployment rate*; this is calculated as the unemployment rate that would be observed if labor force participation rates matched the average for the 15-year period from 1990 to 2004.

Talking Points

Illinois Notes	<ul style="list-style-type: none"> Illinois lost 6,300 jobs at a rate of -0.11% in November 2009, compared to a revised 2,100 job loss in October. In November 2009, the Nation cut 11,000 jobs at a rate of -0.01%. This is much better than the average 407,000 jobs loss per month for the first ten months in 2009. RMW shed 22,800 jobs in November after a revised 51,600 job gain in October. Since the beginning of the recession in Dec 2007, Illinois has posted negative job changes 23 times, and the state has lost 363,300 jobs in this recession. Through 2008, Illinois lost -11,800 jobs at a rate of -0.20% on average per month. However, the average monthly loss for the first ten months of 2009 was -19,900 jobs at a rate of -0.346%. Five sectors in Illinois have employment levels in this month that are lower than January 1990 - Manufacturing, Information, Construction, Trade, transportation & utilities, and Financial activities. Over the last 12 months, Illinois shed 250,400 jobs at a rate -4.26%. Through November 2009, the cumulative job growth for Illinois, RMW and the Nation compared to January 1990 stood at 6.93%, 9.33%, and 20.01%, respectively. The shadow unemployment rates for the Illinois, RMW and the Nation were 13.0%, 14.4% and 12.2%, compared to official unemployment rates of 10.9%, 10.6% and 10.0%.
Nation Notes	<ul style="list-style-type: none"> The nation lost 11,000 jobs in November, compared to a revised 111,000 job loss last month. Since the last employment peak in December 2007, the nation has lost 7,156,000 jobs. However, for RMW and Illinois, they have not yet recovered from their respective peaks in 2000. Since January 2008, the nation has posted monthly negative growth for 23 months with average monthly growth rate -0.23%; the average growth rate for 2007 was 0.07%.

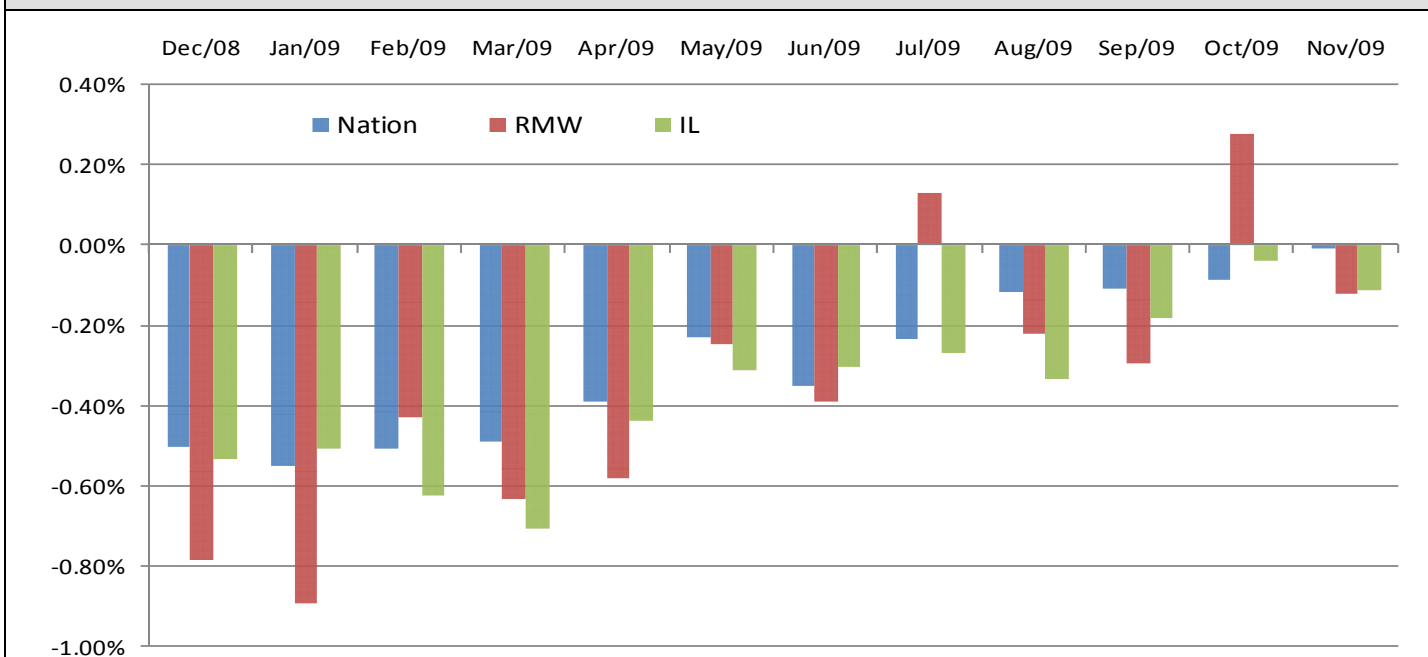
Total Non-farm Employment growth rate Jan 1990 – Nov 2009



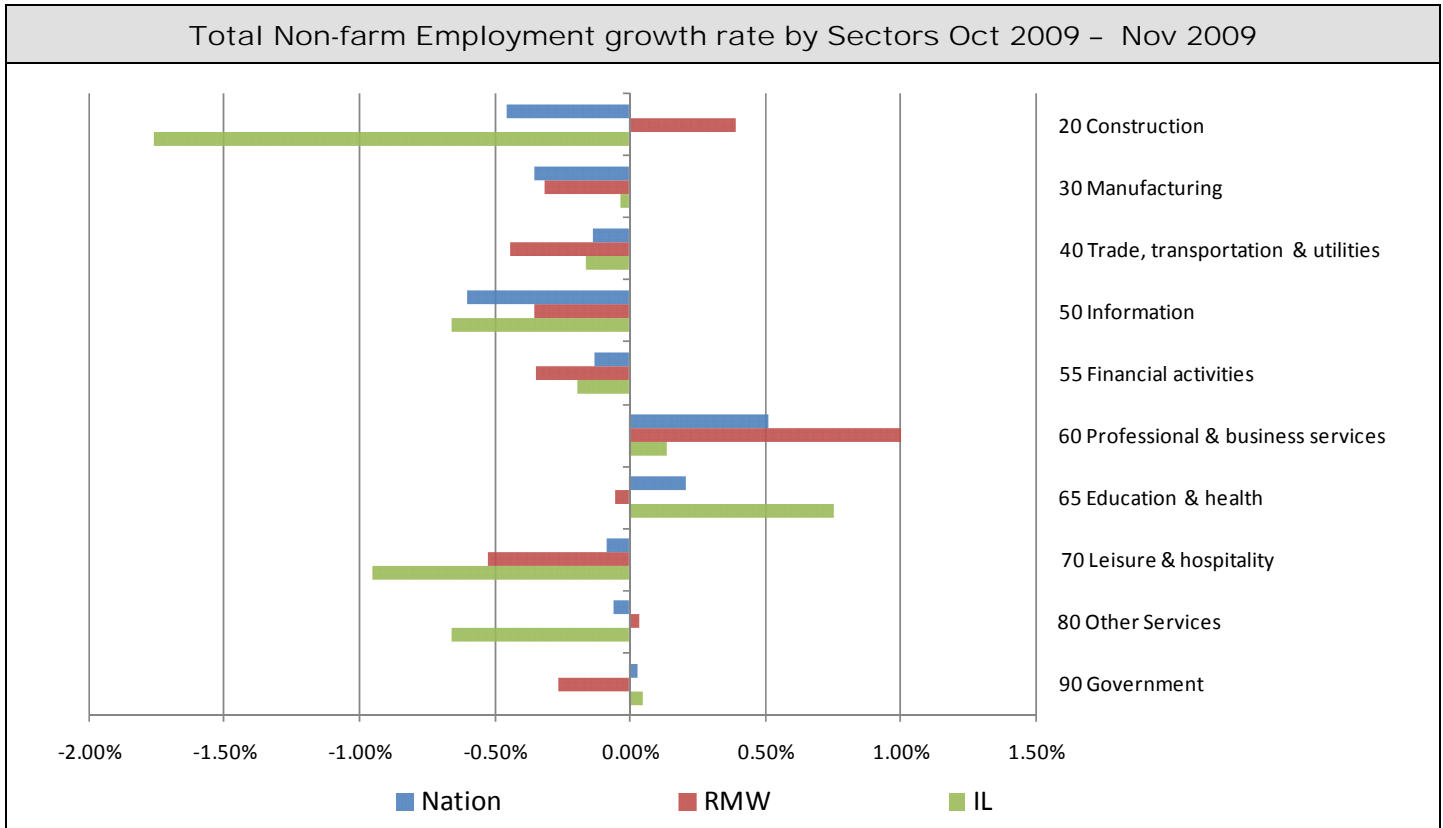
Total Non-farm Employment and Employment Index

	Nov 2009 Number of Jobs	Current Index to Jan 1990	Previous Peak Index to Jan 1990	Changes in Jobs since Jan 1990	Changes in Jobs since Pervious Peak
Nation	130,996,000	120.01	126.57 (Dec-2007)	21,845,000	-7,156,000
RMW	18,677,400	109.33	119.44 (Jun-2000)	1,594,400	-1,729,200
Illinois	5,630,400	106.93	115.08 (Nov-2000)	364,800	-429,000

Last 12 months Total Non-farm Employment growth rate Dec 2008 – Nov 2009



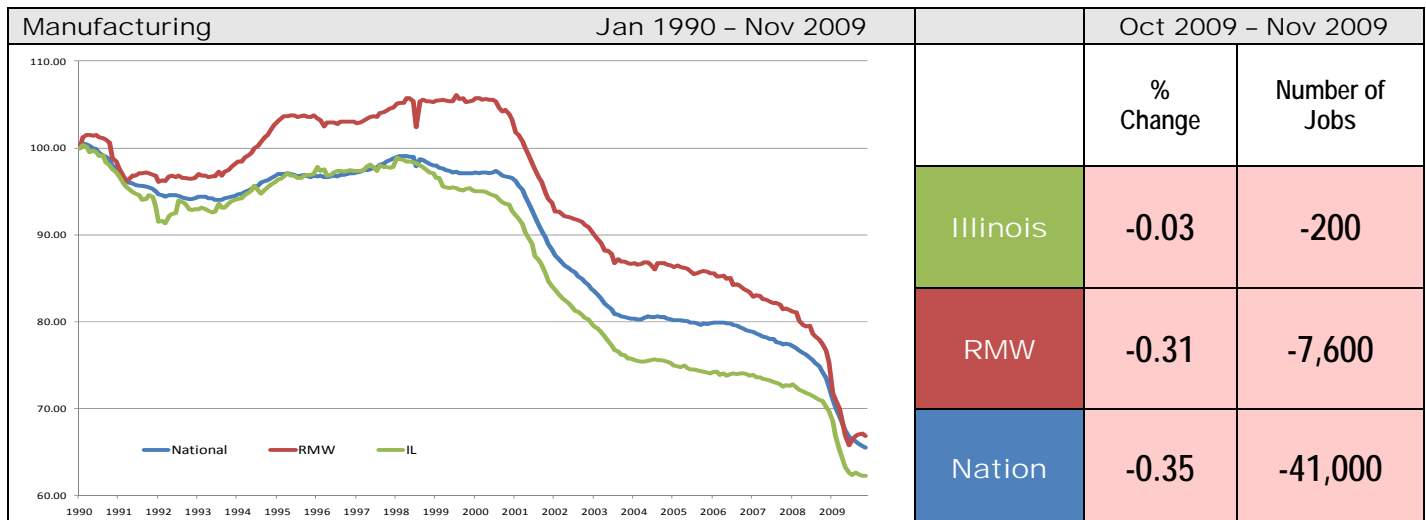
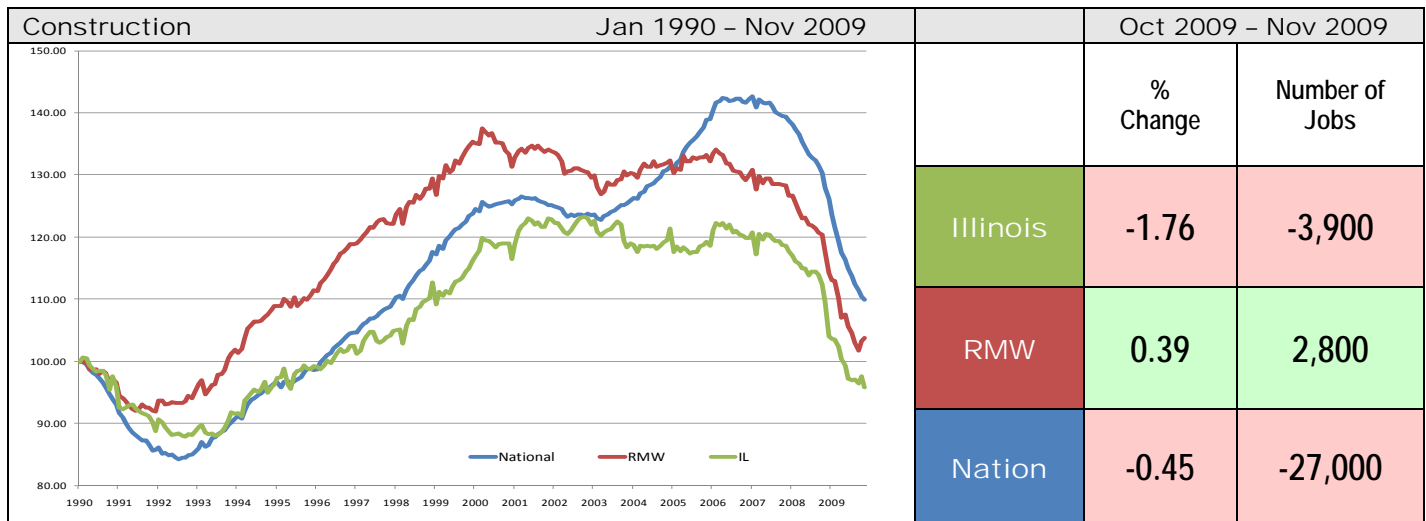
By employment sector:

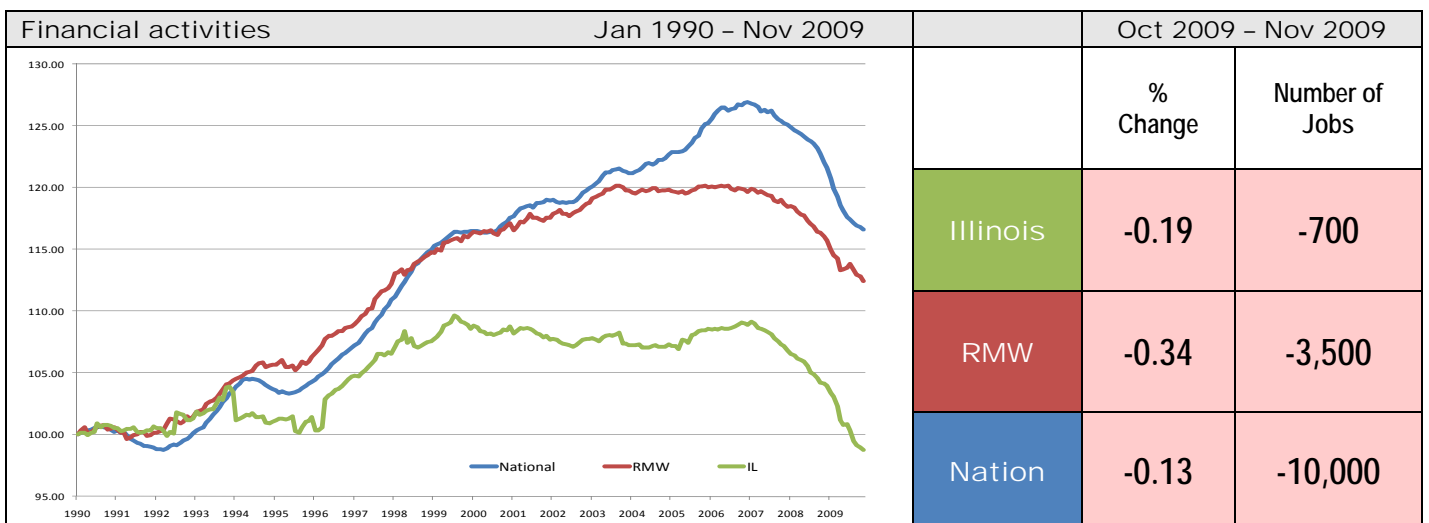
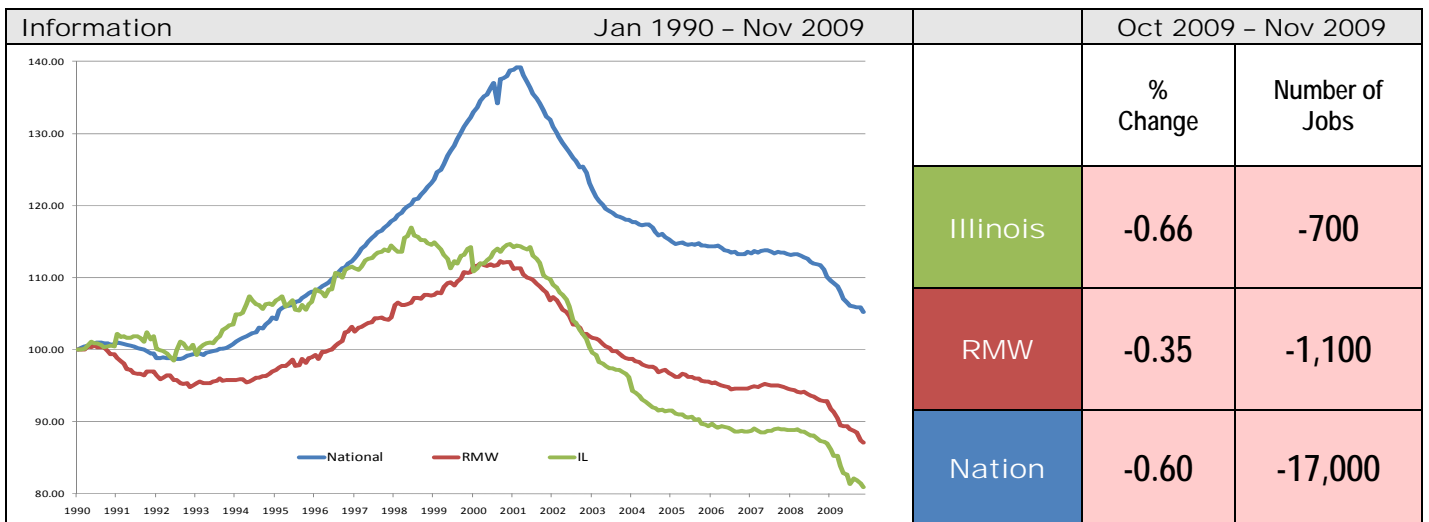
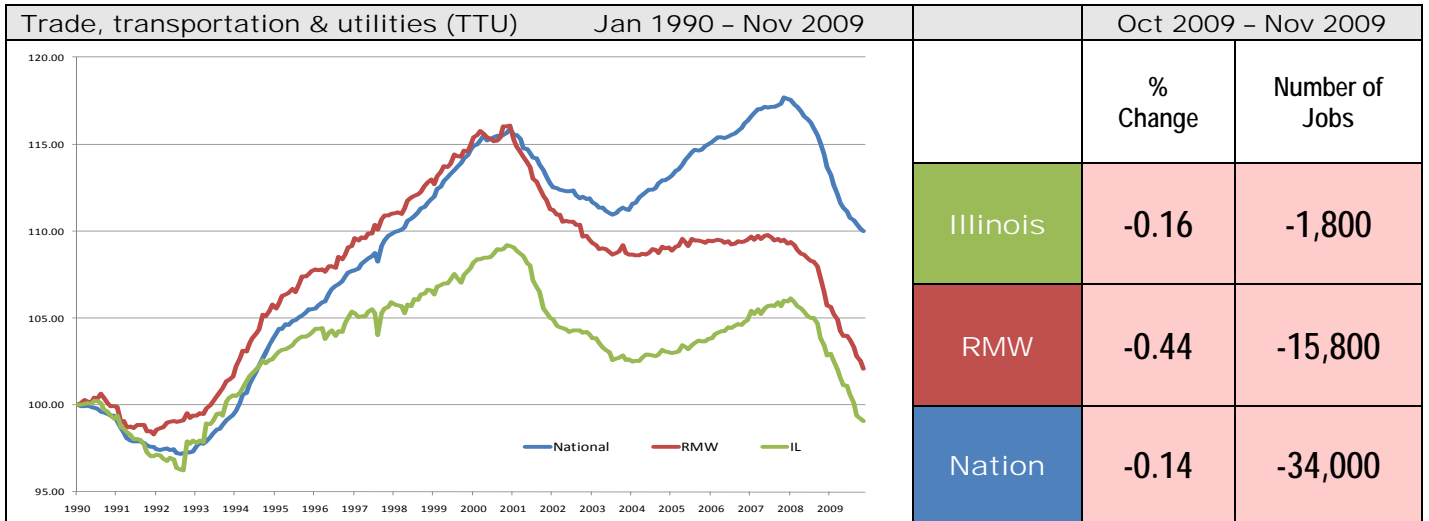


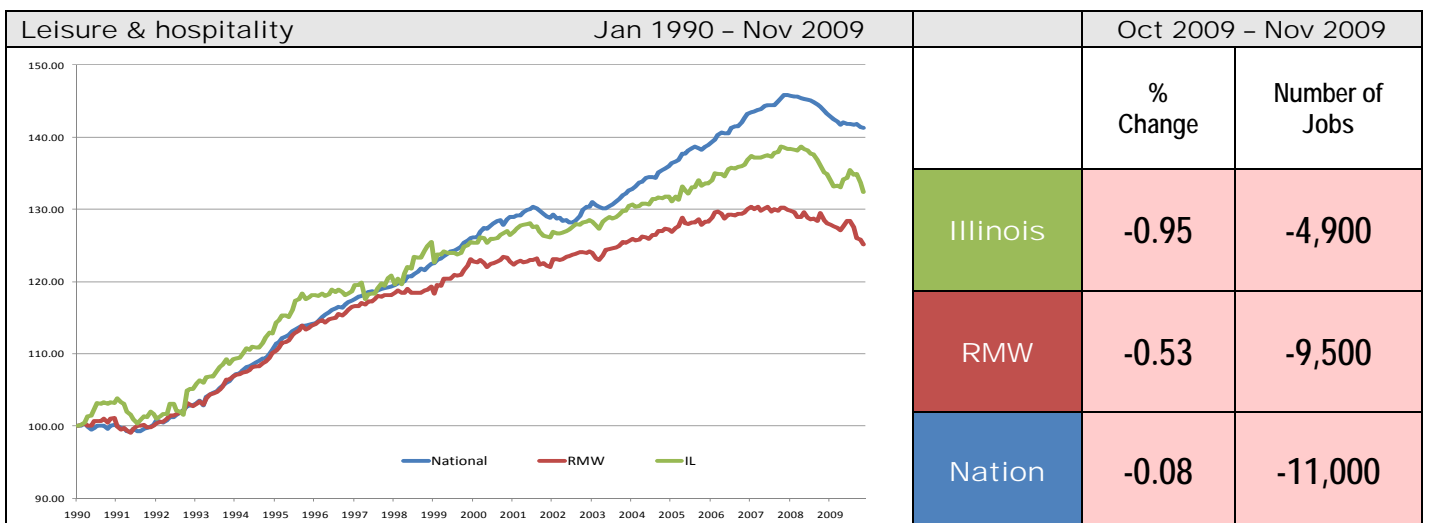
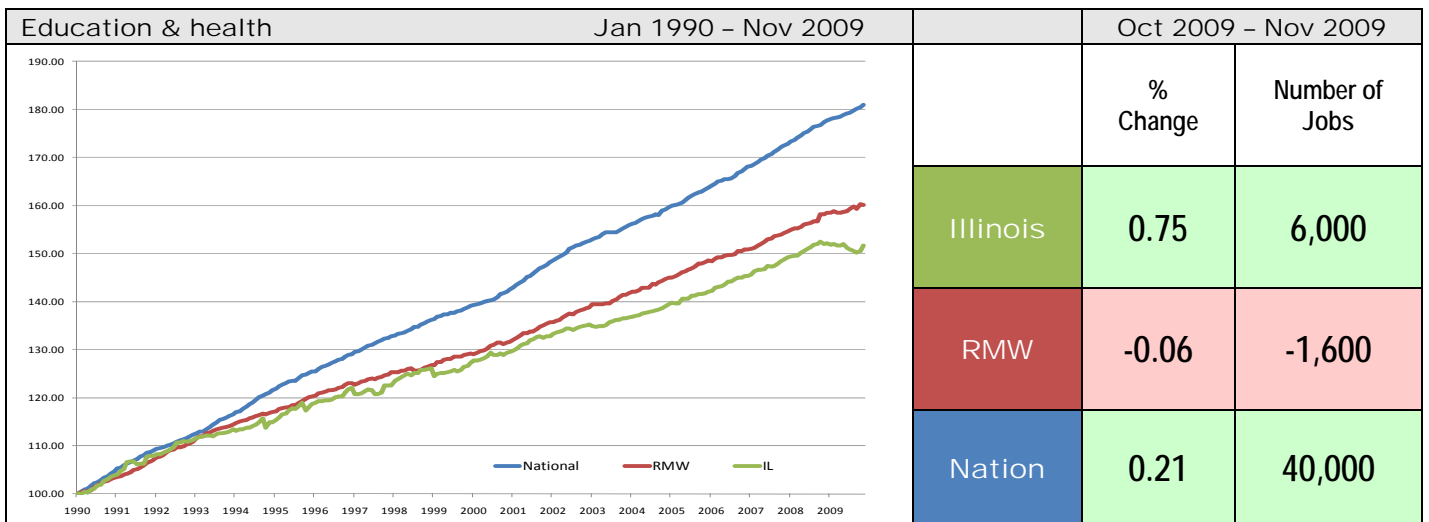
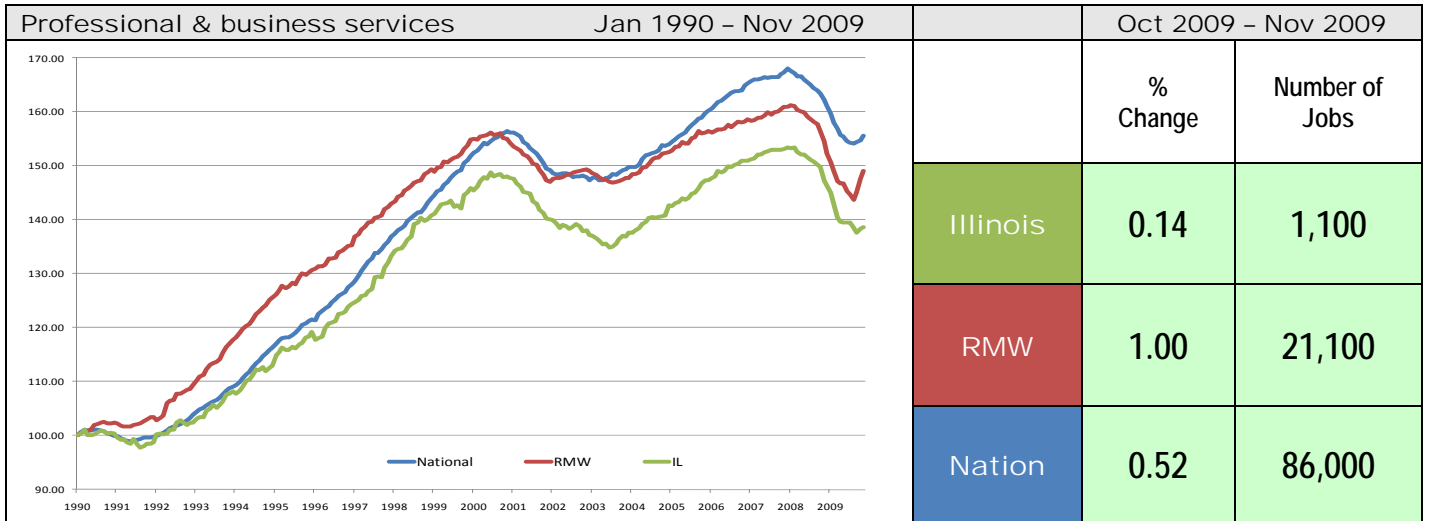
Sector notes

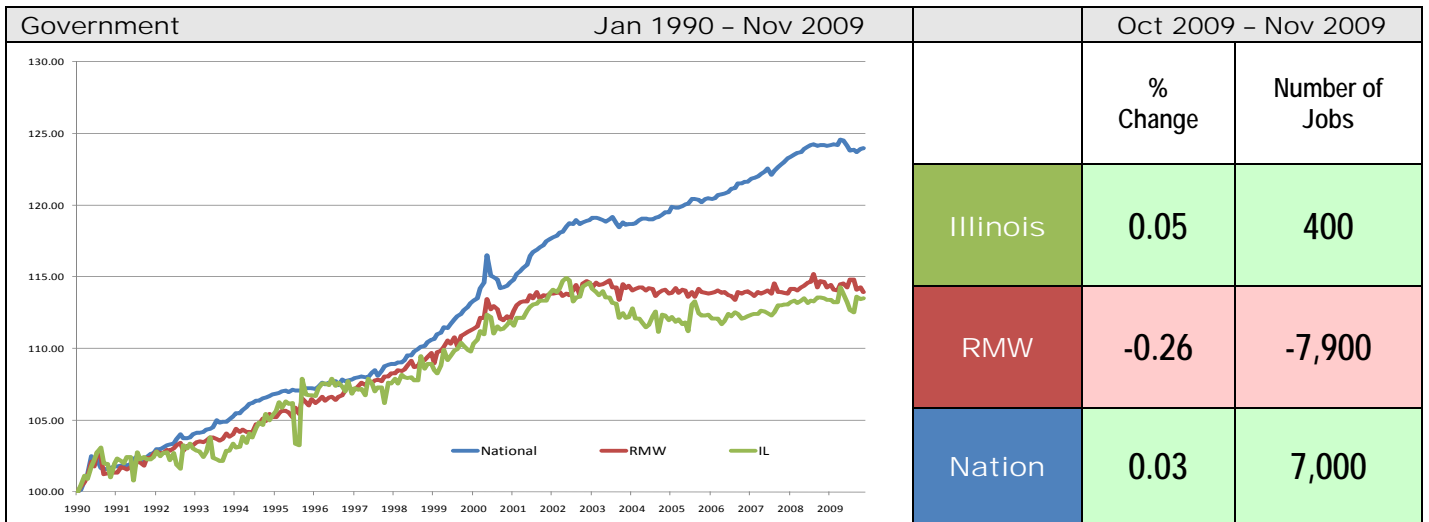
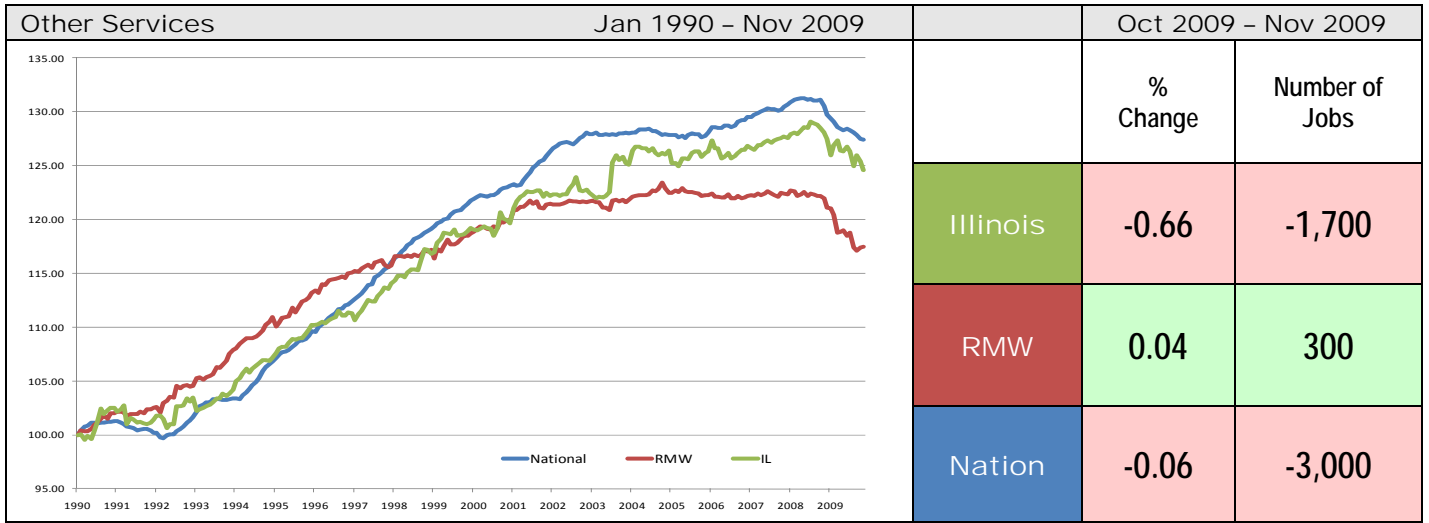
- Illinois posted a job decline of -0.11% in November 2009. Seven out of ten sectors recorded net losses. Compared to October 2009, relative performance gains were recorded for Education and health Services (0.29% to 0.75%), Manufacturing (-0.29% to -0.03%), and Government (-0.15% to 0.05%), whereas Construction (1.14% to -1.76%), Professional and business services (0.55% to 0.14), and Other services (-0.43% to -0.66%), faced major losses in performance.
- In November at the national level, two sectors added jobs:
 - Professional and business services: 86,000 (0.52%)
 - Education and Health Services: 40,000 (0.21%)
 - Government: 7,000 (0.03%)
- Major losses at the national level in November were:
 - Manufacturing: -41,000 (-0.35%)
 - Trade transportation& utilities: -34,000 (-0.14%)
 - Construction: -27,000 (-0.45%)
- For Illinois, three sectors posted job gains in November
 - Education and Health Services: 6,000 (0.75%)
 - Professional and business services: 1,100 (0.14%)
 - Government: 400 (0.05%)
- Following are the major sectors that lost jobs in November for Illinois:
 - Leisure & hospitality: -4,900 (-0.95%)
 - Construction: -3,900 (-1.76%)
 - Trade transportation& utilities: -1,800 (-0.16%)
- For Illinois, five sectors have employment below 1990 levels. They are Manufacturing with -349,100 fewer jobs, Information down -24,900 jobs, Construction down -9,500 jobs, Trade transportation& utilities down -10,900 jobs, and Financial activities down -4,500 jobs, than their 1990 employment levels, respectively.

Total Non-farm Employment growth rate by sector Jan 1990 - Nov 2009						
	Illinois				RMW	Nation
	vs. RMW	vs. Nation	Number of Jobs	Rate %	Rate %	Rate %
Construction	-	-	-9,500	-4.18	3.71	9.92
Manufacturing	-	-	-349,100	-37.80	-33.15	-34.56
Trade, transportation & utilities (TTU)	-	-	-10,900	-0.95	2.09	9.97
Information	-	-	-24,900	-19.07	-12.90	5.24
Financial activities	-	-	-4,500	-1.21	12.44	16.62
Professional & business services	-	-	220,100	38.56	49.09	55.56
Education & health	-	-	273,700	51.73	60.16	80.89
Leisure & hospitality	+	-	125,300	32.46	25.18	41.32
Other Services	+	-	50,500	24.59	17.44	27.39
Government	-	-	101,800	13.50	13.96	23.97









ABOUT: The Regional Economics Applications Laboratory (REAL) is a unit of the Institute of Government and Public Affairs of the University of Illinois. REAL undertakes impact and forecasting analyses of the Illinois and several Midwestern economies and is also engaged in similar analysis in several other countries including Brazil, Chile, Colombia, Japan. More information can be found at www.real.uiuc.edu.