


Illinois Job Index

Release 1/31/2009	Data Jan 1990 / Dec 2008	Issue 2009.1	www.real.uiuc.edu
----------------------	-----------------------------	-----------------	-------------------

For the January 2009 Illinois Job Index, a negative rating has been applied. Illinois joined the continued with negative growth (for the entire 2008 for the US). RMW also posted a negative growth.

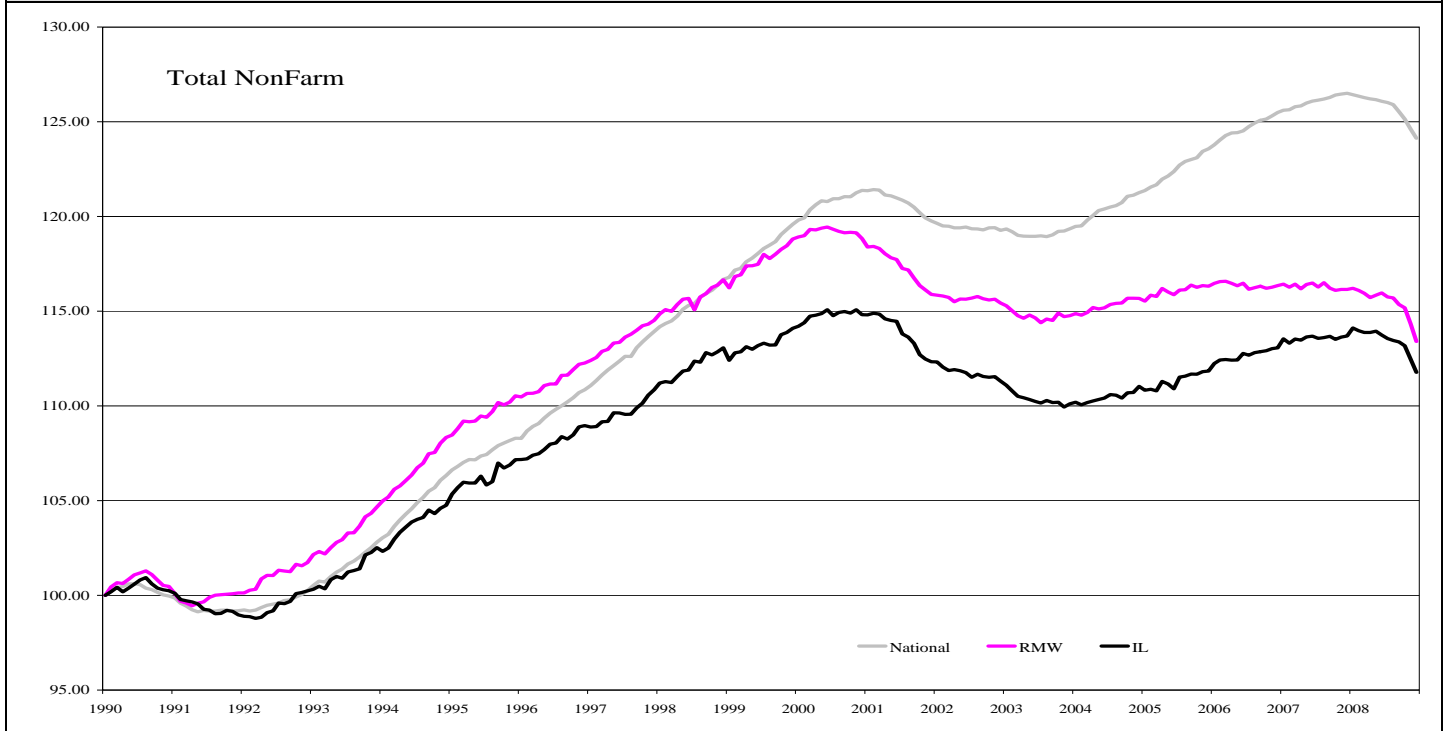
The monthly Illinois Job Index and MSA Report are issued monthly as tools for elected officials, policy leaders and the public. The objective is to enhance the understanding of the Illinois economy and business climate by comparing and measuring Illinois employment growth rates against those of the Rest of the Midwest (RMW: Indiana, Iowa, Michigan, Missouri, Ohio and Wisconsin) and the Nation. Data and analysis is provided by the Illinois Economic Observatory / Regional Economics Applications Laboratory, University of Illinois.

	January 2009 Negative		Nov 2008 - Dec 2008		Last 12 months	
		Total non-farm employment	Growth Rate %	Number of Jobs	Growth Rate%	Number of Jobs
		Nation	-0.39	-524,000	-1.88	-2,589,000
		RMW	-0.81	-159,100	-2.37	-470,300
		Illinois	-0.61	-36,000	-1.68	-100,700

Talking Points

Illinois Notes	<ul style="list-style-type: none"> ▪ In December 2008, Illinois lost 36,000 jobs at a rate of -0.61%, compared to a revised 37,600 job loss in November. ▪ Illinois has posted negative job changes nine times in 2008, and the state has lost 100,700 jobs since January, 2008. ▪ Through 2008, Illinois lost -8,392 jobs at a rate of -0.14% on average per month. This is the second worst year since 1990, compared to average monthly loss of -10,908 jobs at a rate of -0.18% in 2001. ▪ Illinois, RMW, and the nation all lost jobs for the second half of 2008. ▪ Over the last 12 months, Illinois payroll growth was -1.68%, better than the -1.88% growth of the nation. RMW continued with a negative rating (-2.37%) and has lost jobs for sixteen months in a row. ▪ In 2008, Illinois, RMW, and the Nation lost -100,700, -470,300, and -2,589,000 jobs, respectively. ▪ Through December 2008, the cumulative job growth for Illinois, RMW and the Nation compared to January 1900 stood at 11.78%, 13.40%, and 24.13%, respectively.
Nation Notes	<ul style="list-style-type: none"> ▪ The nation lost -524,000 jobs in December, compared to the revised 584,000 job loss in November. It is the first time the last 70 years that the economy has lost more than 500,000 jobs in consecutive months. ▪ The nation lost jobs for every single month in 2008. The net job loss for 2008 is 2,589,000 at a rate of 1.88%. ▪ While through December the nation posted negative growth for twelve months in a row with average growth rate -0.14%, the average growth rate for 2007 was 0.07% and the average for the recent recovery period for the nation since September 2003 was 0.12%.

Total non-farm Employment growth rate Jan 1990 - Dec 2008



Total no-farm Employment and Employment Index

	December 2008 Number of Jobs	Current Index to Jan 1990	Previous Peak Index to Jan 1990	Changes in Jobs since Jan 1990	Changes in Jobs since Pervious Peak
Nation	135,489,000	124.13	121.45 (Feb-2001)	26,338,000	2,959,000
RMW	19,374,800	113.40	119.44 (Jun-2000)	2,289,600	-1,032,300
Illinois	5,885,800	111.78	115.08 (Nov-2000)	620,200	-173,600

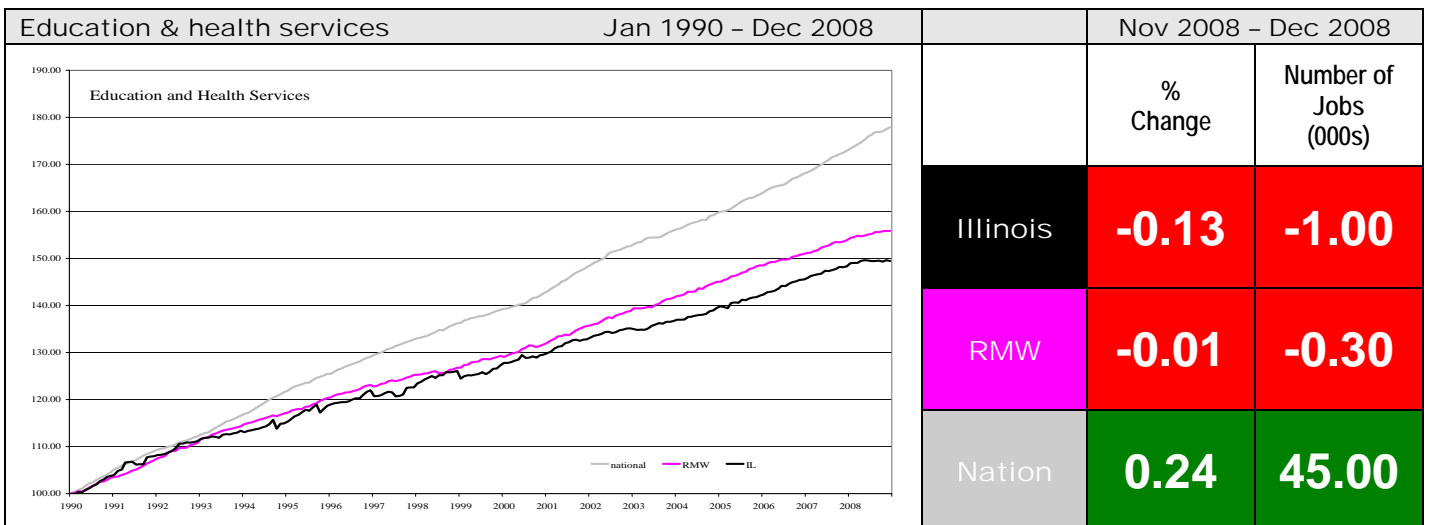
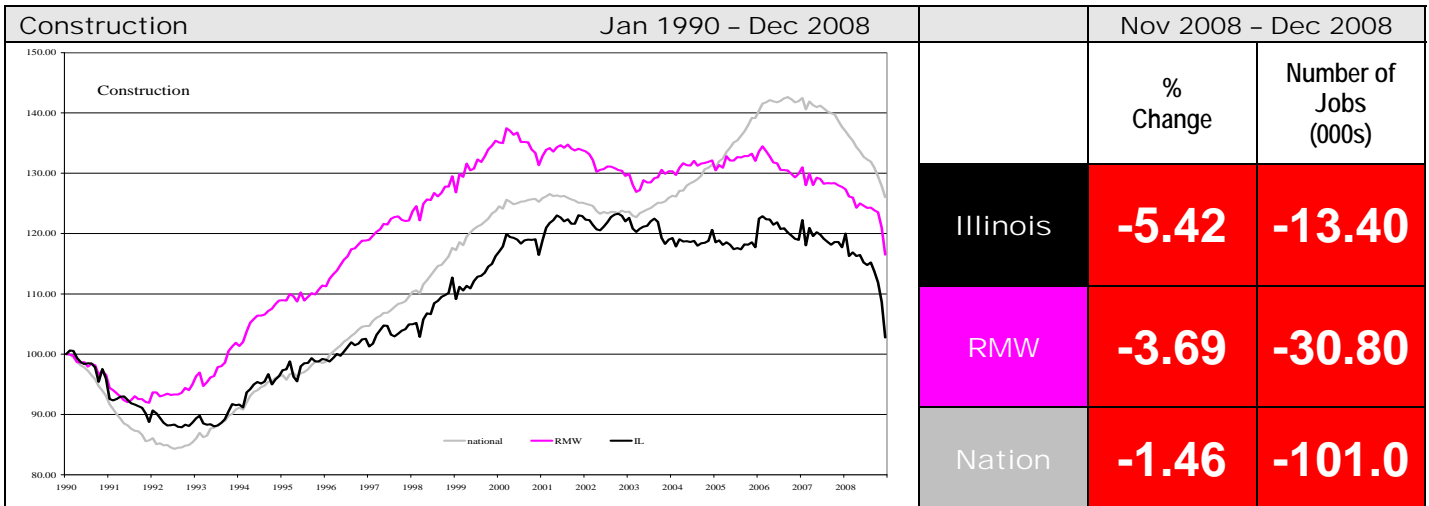
By employment sector:

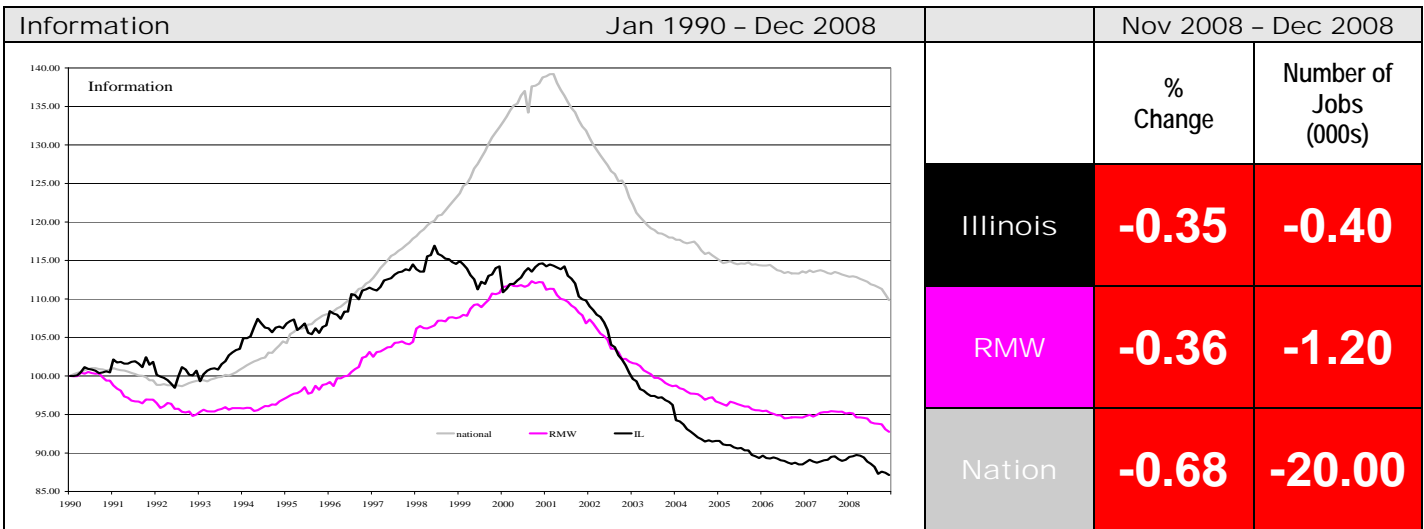
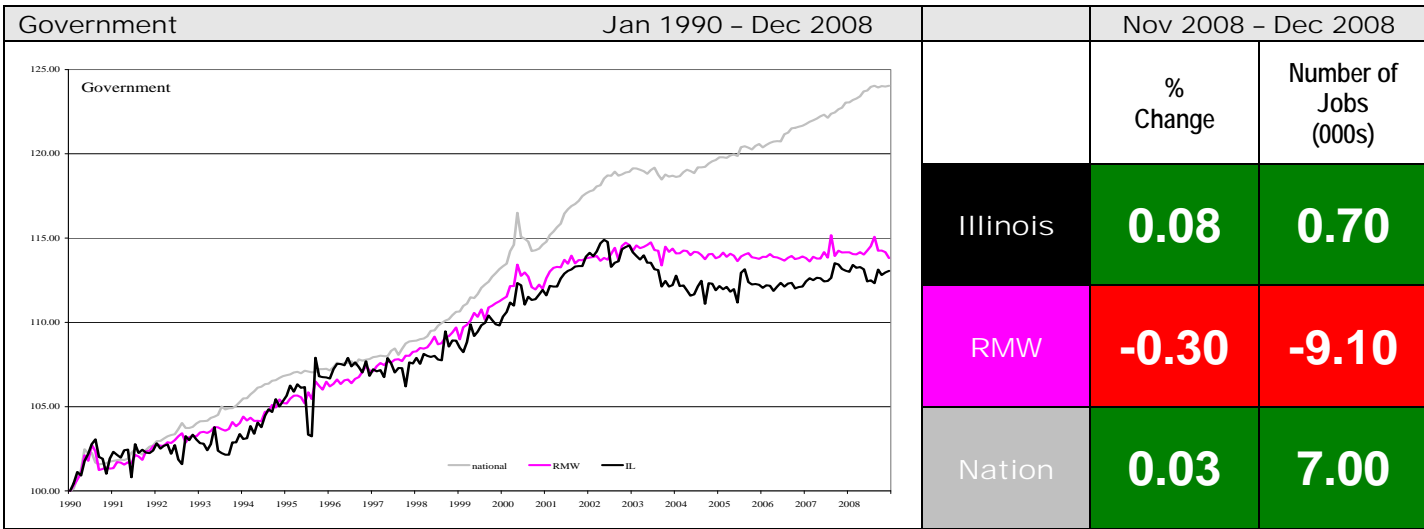
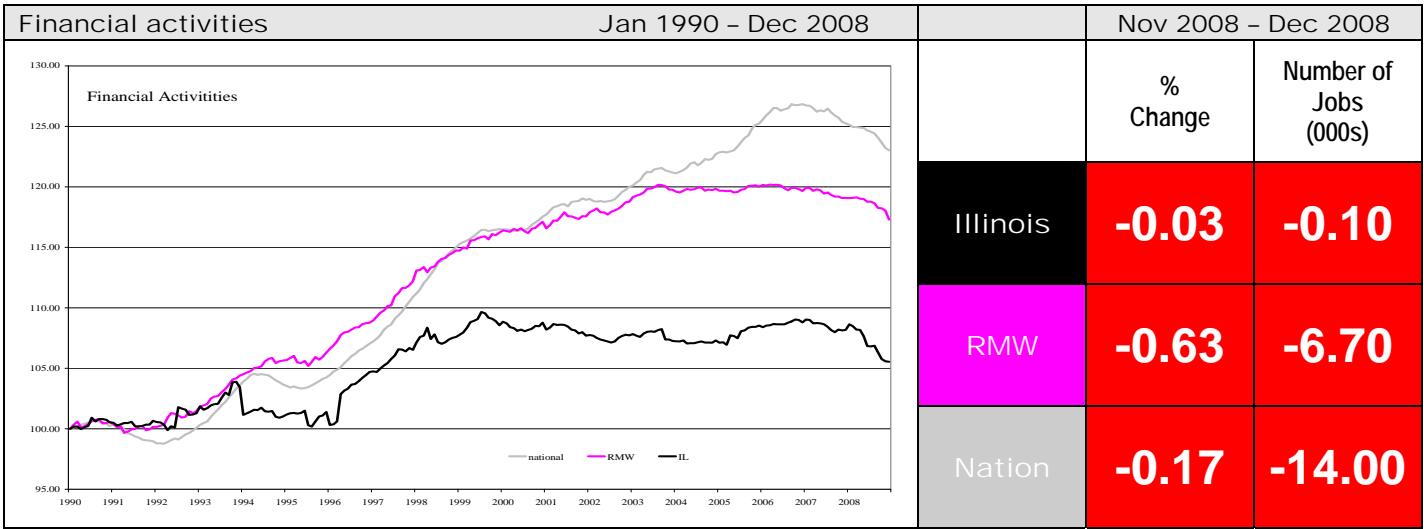
Total non-farm Employment growth rate by sector

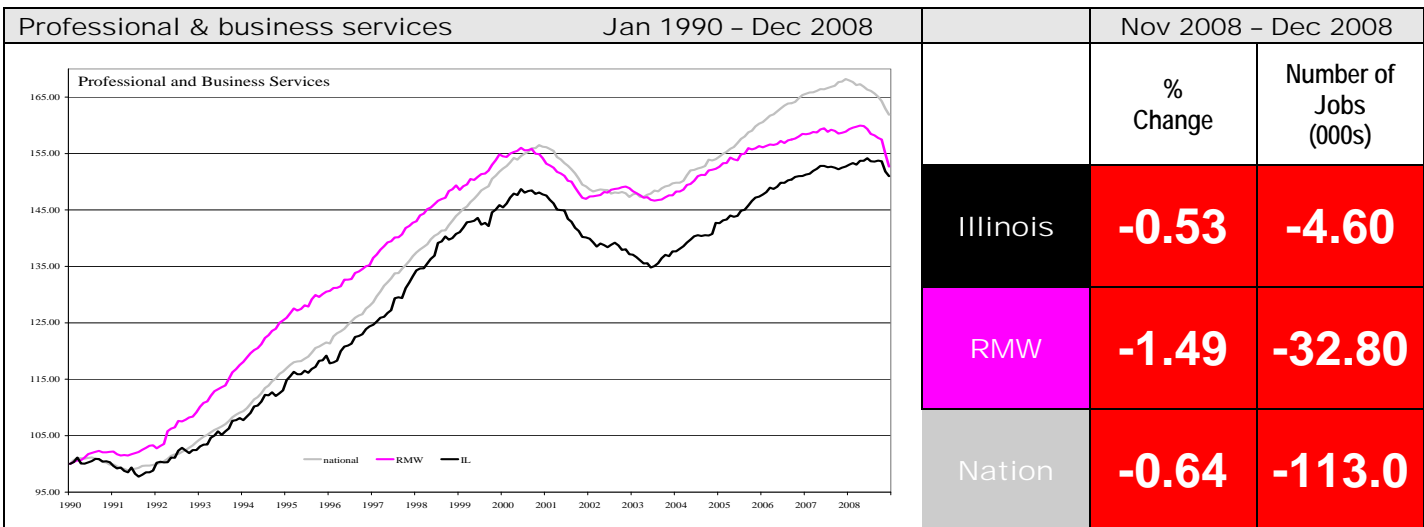
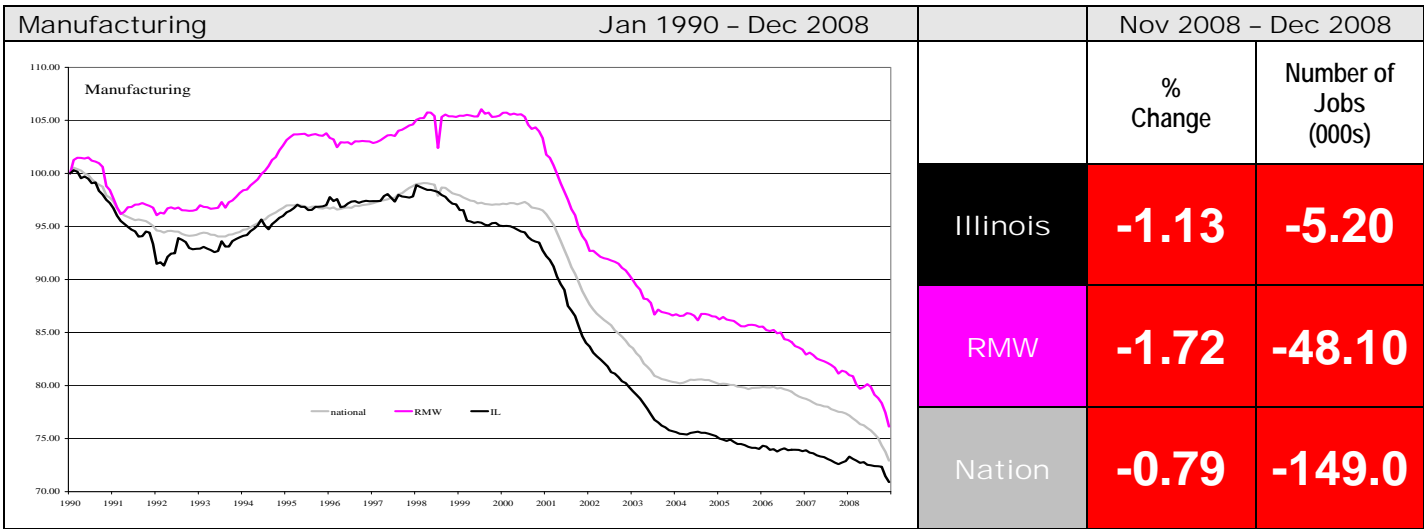
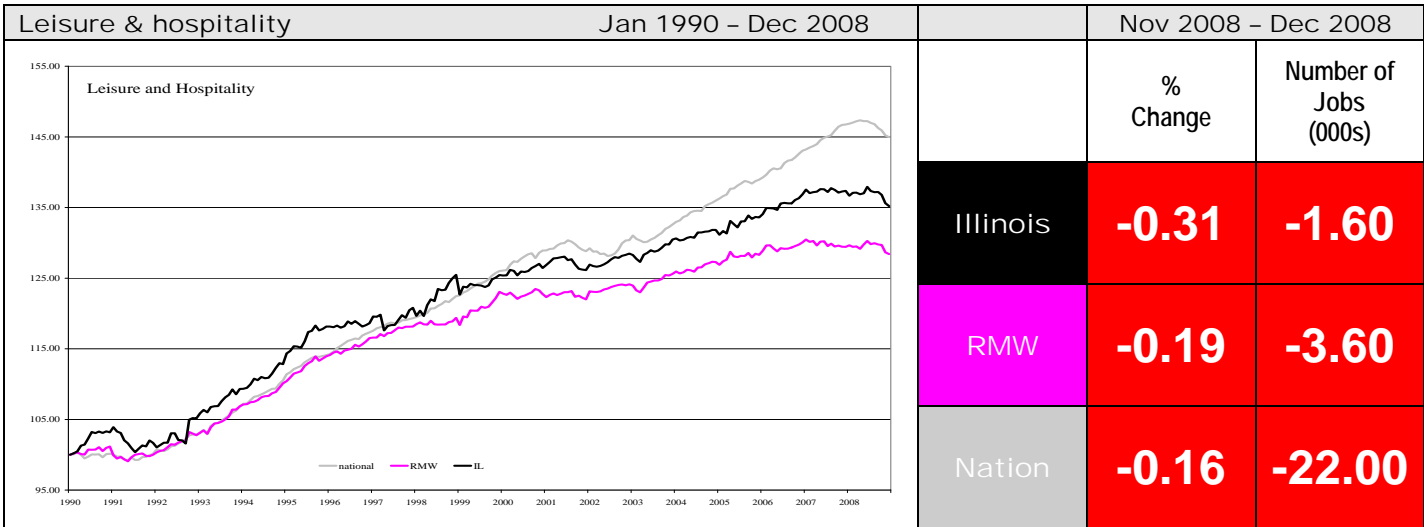
Monthly growth rates	Nov 2008 - Dec 2008			Jan 1990 - Dec 2008					
	Illinois vs. RMW	Illinois vs. Nation	Midwest vs. Nation	Illinois				RMW	Nation
				vs. RMW	vs. Nation	Number of Jobs	Rate %	Rate %	Rate %
Construction	-	-	-	-	-	6,300	2.77	16.51	26.02
Education & health	-	-	-	-	-	261,600	49.44	55.86	77.88
Financial activities	+	+	-	-	-	20,700	5.55	17.30	23.01
Government	+	+	-	-	-	98,400	13.05	13.82	24.04
Information	+	+	+	-	-	-16,800	-12.86	-7.25	9.85
Leisure & hospitality	-	-	-	+	-	135,900	35.21	28.41	44.97
Manufacturing	+	+	-	-	-	-268,800	-29.10	-23.86	-27.07
Professional & business services	+	+	-	-	-	291,100	51.00	52.68	61.90
Trade, transportation & utilities (TTU)	-	-	-	-	-	48,600	4.23	7.10	13.66
Other Services	+	-	-	+	-	51,400	25.02	19.42	29.52

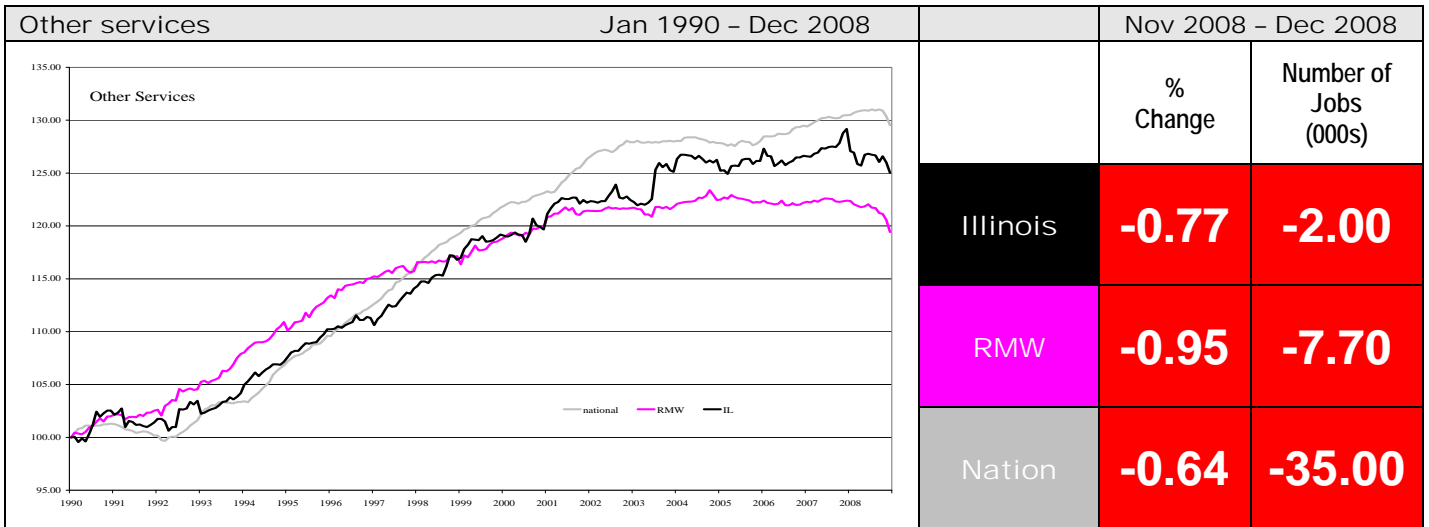
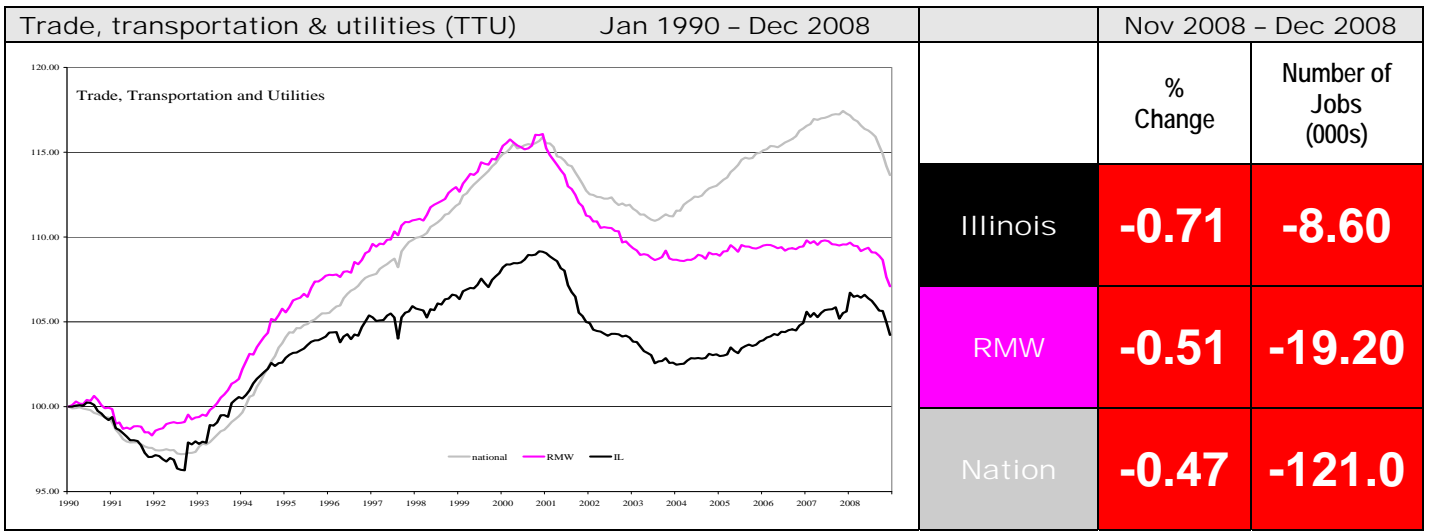
Sector notes

- Illinois posted a job decline of -0.61% in December 2008. Only one sector recorded a net gain, while the rest of the nine sectors faced net losses. Compared to November, performance gains were recorded for Professional & business services (-1.20% to -0.53%), Leisure & hospitality (-0.85% to -0.31%), and Manufacturing (-1.23% to -0.79%), whereas Construction (-2.87% to -5.42%), Education & health, and Other Services (-0.46% to -0.77%) faced major losses in performance.
- In December, notable gains at the national level were recorded for the following sectors:
 - Education and Health Services: 45,000 (0.24%)
 - Government: 7,000 (0.03%)
- Major losses at the national level in December were:
 - Manufacturing: -149,000 (-0.79%)
 - Trade, transportation & utilities: -121,000 (-0.47%)
 - Professional & business services: -113,000 (-0.64%)
- For Illinois, the following sector was the only one to post job gains:
 - Government: 700 (0.08%)
- Following are the major sectors that lost jobs in November in Illinois:
 - Manufacturing: -5,200 (-1.13%)
 - Construction: -13,400 (-5.42%)
 - Trade, transportation & utilities: -8,600 (-0.71%)
- For Illinois, in terms of 12-months aggregated account, Construction, Manufacturing, Trade, transportation & utilities, Financial activities, Information, Professional & business services, Government, Other Services, and Leisure and Hospitality, recorded net losses. Education & health services was the only positive contributor.









ABOUT: The Regional Economics Applications Laboratory (REAL) is a unit of the Institute of Government and Public Affairs of the University of Illinois. REAL undertakes impact and forecasting analyses of the Illinois and several Midwestern economies and is also engaged in similar analysis in several other countries including Brazil, Chile, Colombia, Japan. More information can be found at www.real.uiuc.edu.