


Illinois Job Index

Release 7/20/2009	Data Jan 1990 / June 2009	Issue 2009.7	www.real.uiuc.edu
----------------------	------------------------------	-----------------	-------------------

For the July 2009 Illinois Job Index, a negative rating continues. Illinois, RMW and US all lost jobs in June 2009. The job loss rate for Illinois was the smallest among all three cases.

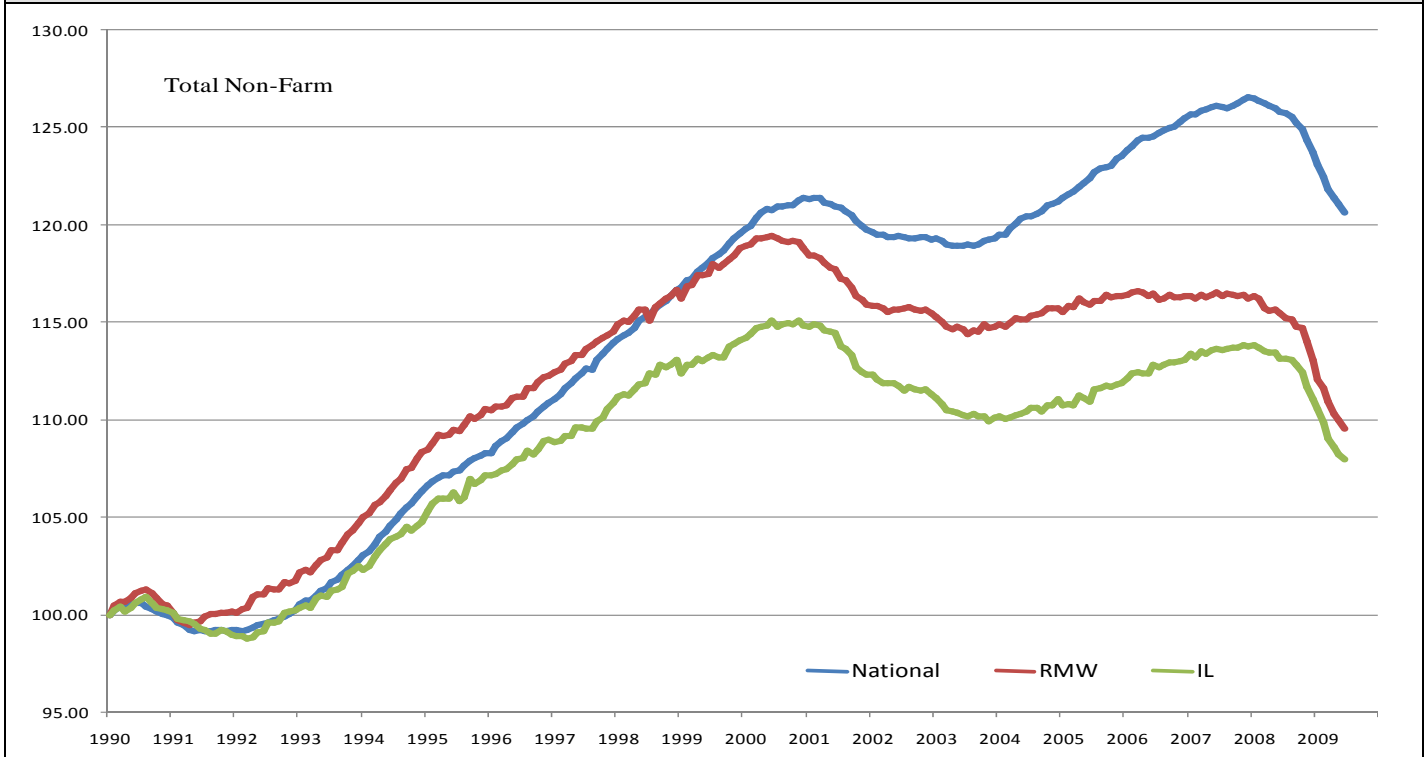
The monthly Illinois Job Index and MSA Report are issued monthly as tools for elected officials, policy leaders and the public. The objective is to enhance the understanding of the Illinois economy and business climate by comparing and measuring Illinois employment growth rates against those of the Rest of the Midwest (RMW: Indiana, Iowa, Michigan, Missouri, Ohio and Wisconsin) and the Nation. Data and analysis is provided by the Illinois Economic Observatory / Regional Economics Applications Laboratory, University of Illinois.

	July 2009 Negative		May 2009–June 2009		Last 12 months		June 2009
		Total non-farm employment	Growth Rate %	Number of Jobs	Growth Rate%	Number of Jobs	Shadow U.R. *
		Nation	-0.35	-467,000	-4.12	-5,664,000	10.7%
		RMW	-0.42	-79,800	-5.12	-1,010,200	13.7%
		Illinois	-0.24	-13,900	-4.57	-272,600	12.0%

*REAL has estimated a *shadow unemployment rate*; this is calculated as the unemployment rate that would be observed if labor force participation rates matched the average for the 15-year period from 1990 to 2004.

Talking Points	
Illinois Notes	<ul style="list-style-type: none"> ▪ Illinois lost 13,900 jobs at a rate of -0.24% in June 2009, compared to a revised 17,800 job loss in May. ▪ Illinois, RMW, and the nation all lost jobs in June. However, the job loss rates were smaller compare to first four months in 2009 for all three cases. Within the rest of Midwest, over 80% of job loss occurred in Ohio and Michigan. ▪ Since the beginning of the recession in Dec 2007, Illinois has posted negative job changes 18 times, and the state has lost 307,600 jobs in this recession. 268,400 jobs (87.3%) have been lost since Sep 2008. ▪ Through 2008, Illinois lost -11,808 jobs at a rate of -0.20% on average per month. However, the average monthly loss for the first five months of 2009 was -27,200 jobs at a rate of -0.47%. ▪ Over the last 12 months, Illinois payroll cut 272,600 jobs at a rate -4.57%, the rate is higher than the -4.12% national rate. RMW continued with a negative rating (-5.12%) and has recorded a negative rate for 16 months in a row. ▪ Through June 2009, the cumulative job growth for Illinois, RMW and the Nation compared to January 1990 stood at 7.99%, 9.54%, and 20.65%, respectively. ▪ The shadow unemployment rates for the Illinois, RMW and the Nation were 12.0%, 13.7% and 10.7%, compared to official unemployment rates of 10.3%, 11.0% and 9.5%.
Nation Notes	<ul style="list-style-type: none"> ▪ The nation lost 467,000 jobs in June, up from a revised 322,000 job loss in May. The job loss in June was worse than economists' forecast of 365,000. ▪ Since the last employment peak in December 2007, the nation has lost 6,460,000 jobs. However, for RMW and Illinois, they have not yet recovered from their respective peaks in 2000. ▪ Since January 2008, the nation has posted monthly negative growth for one and half years with average monthly growth rate -0.27%; the average growth rate for 2007 was 0.07%.

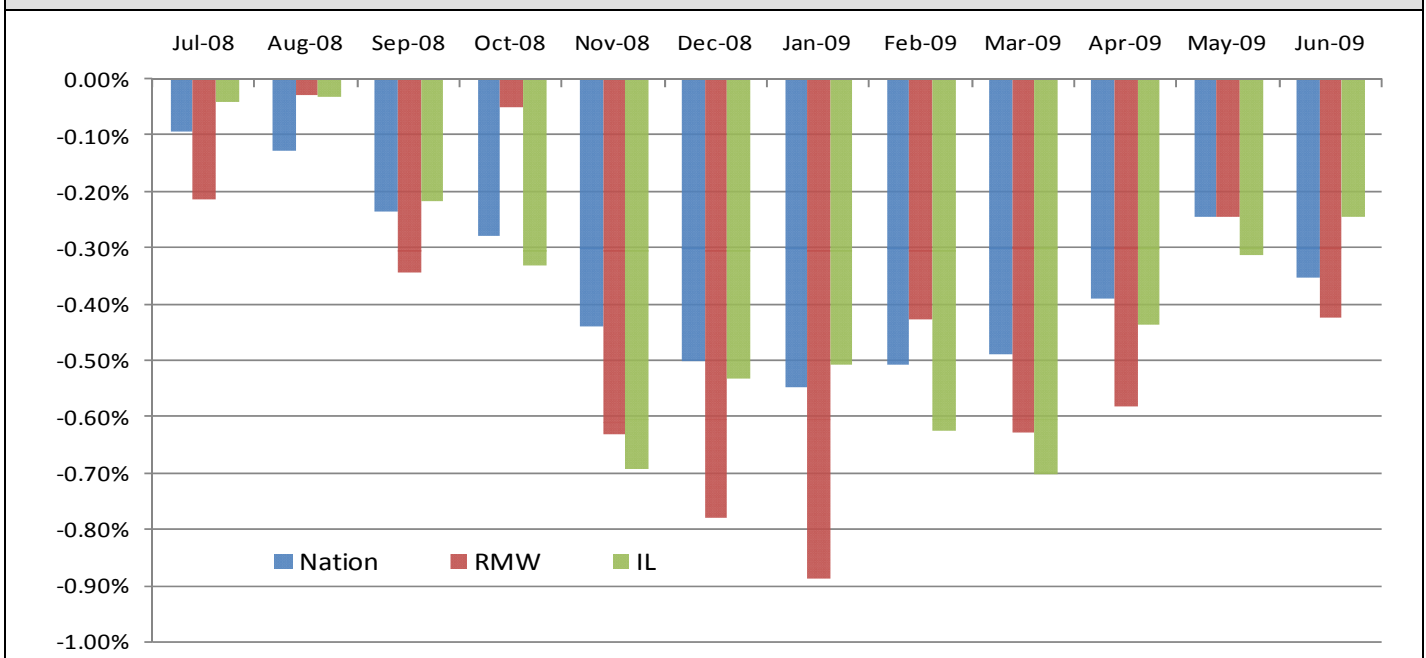
Total Non-farm Employment growth rate Jan 1990 - June 2009



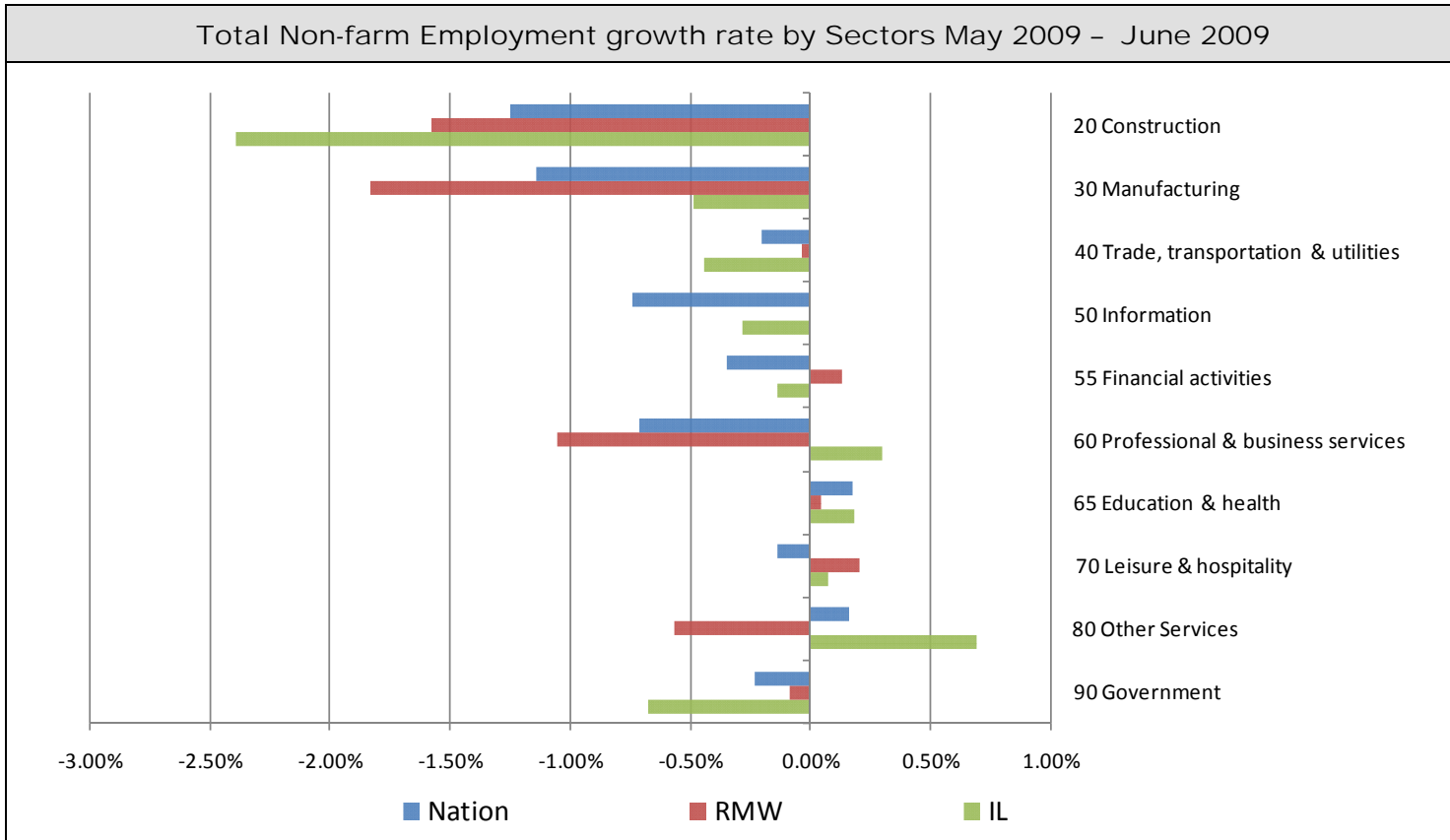
Total Non-farm Employment and Employment Index

	June 2009 Number of Jobs	Current Index to Jan 1990	Previous Peak Index to Jan 1990	Changes in Jobs since Jan 1990	Changes in Jobs since Pervious Peak
Nation	131,692,000	120.65	126.57 (Dec-2007)	22,541,000	-6,460,000
RMW	18,712,400	109.54	119.44 (Jun-2000)	1,629,400	-1,694,200
Illinois	5,686,100	107.99	115.08 (Nov-2000)	420,500	-373,300

Last 12 months Total Non-farm Employment growth rate July 2008 - June 2009



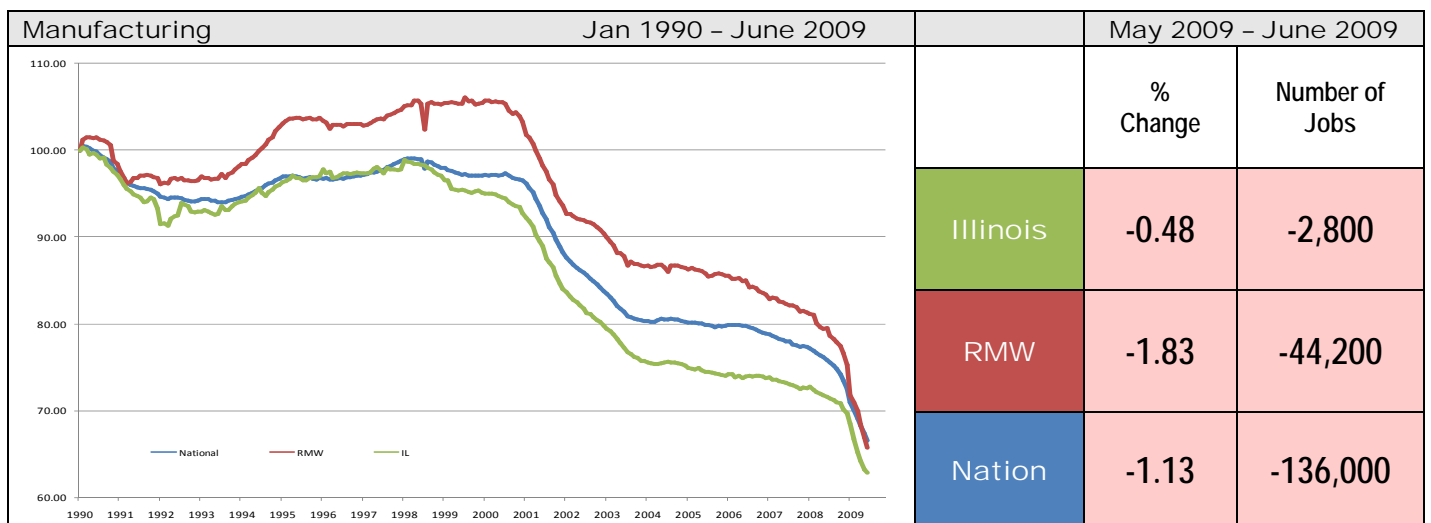
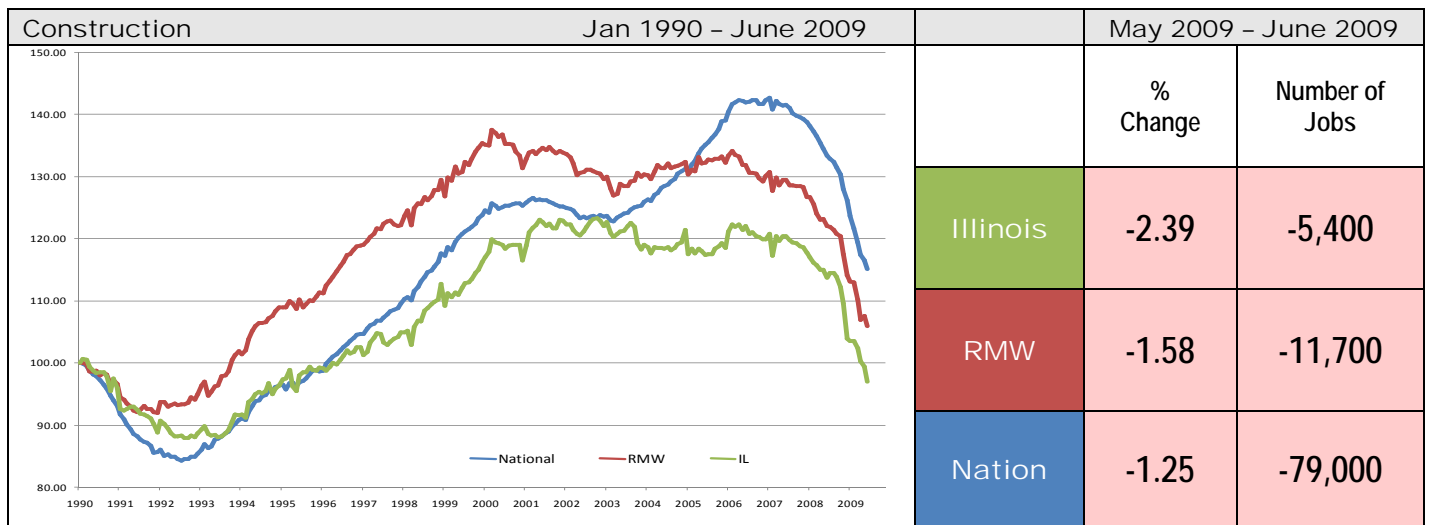
By employment sector:

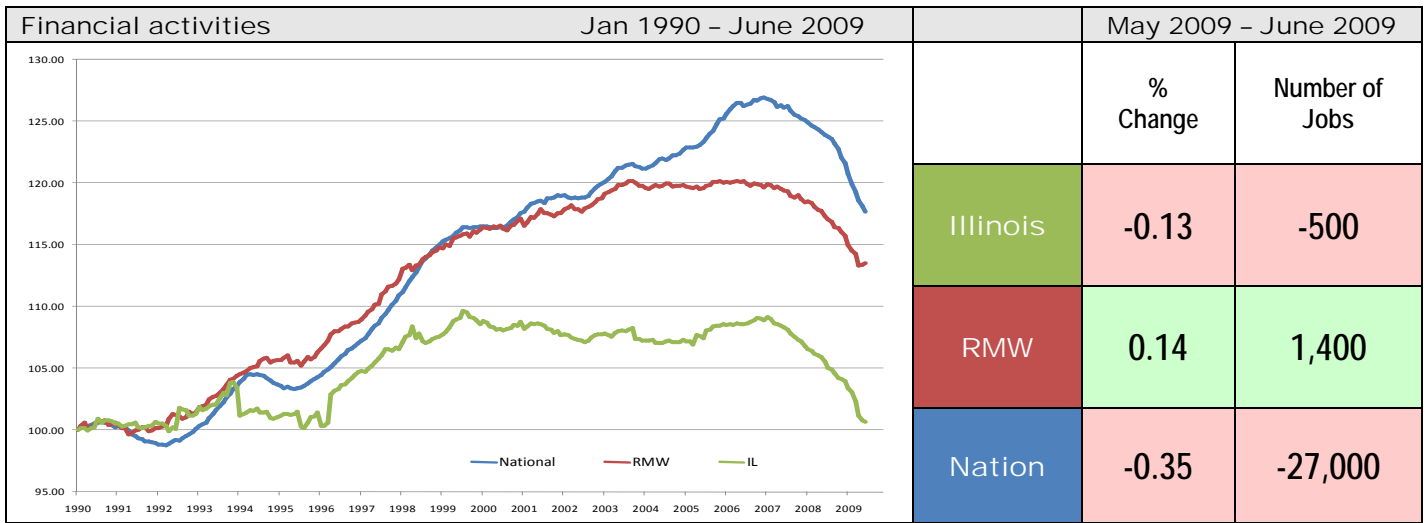
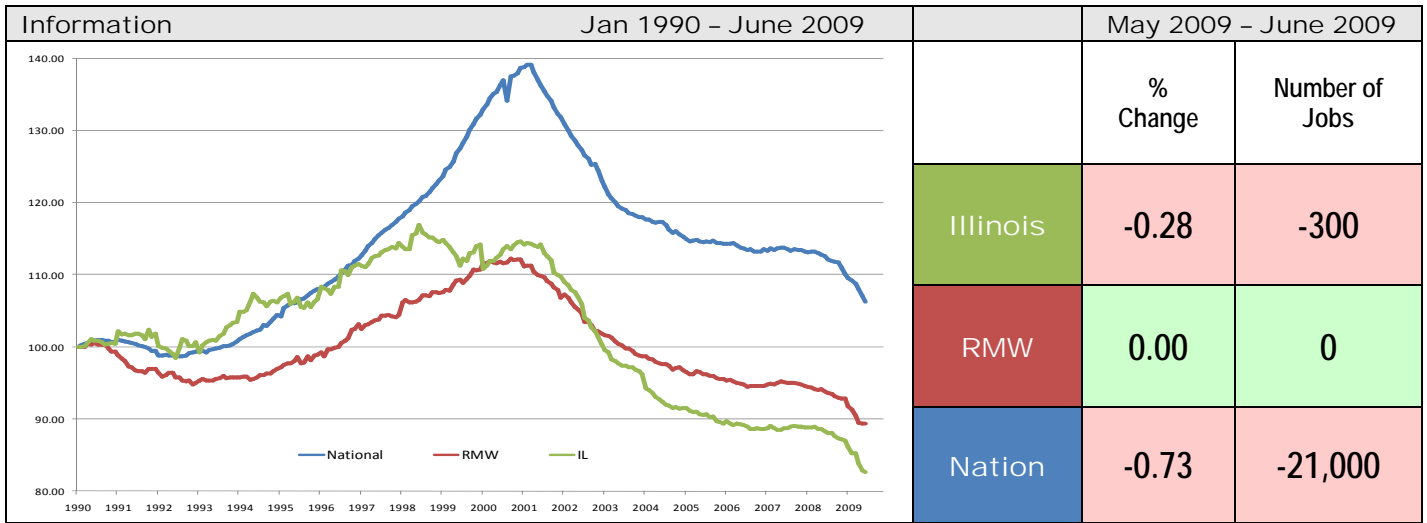
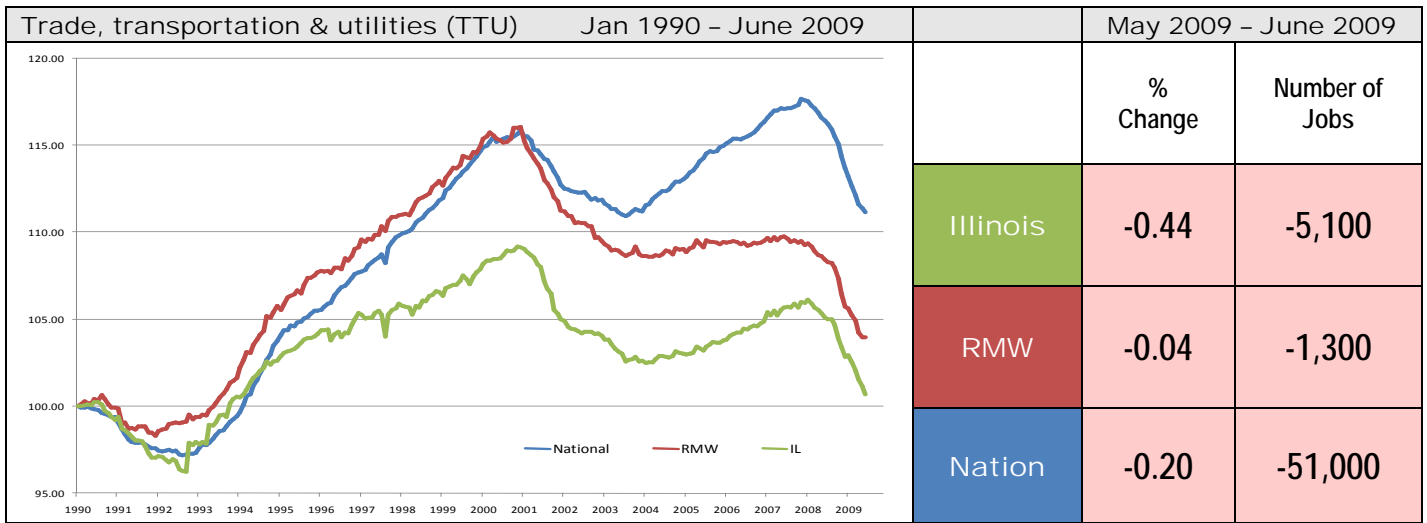


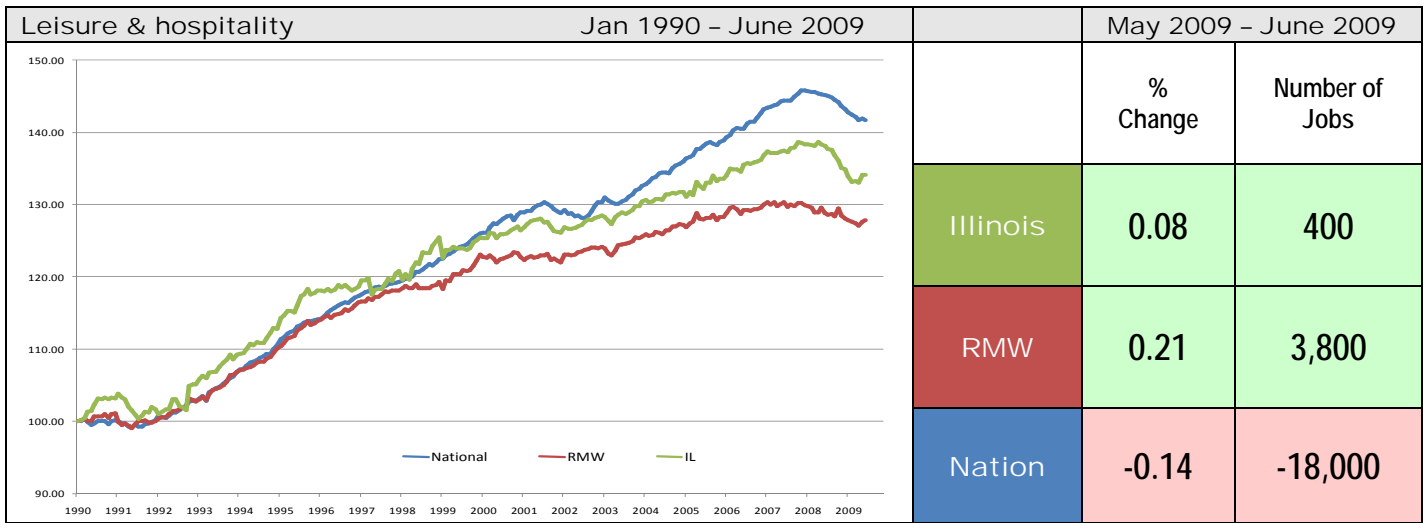
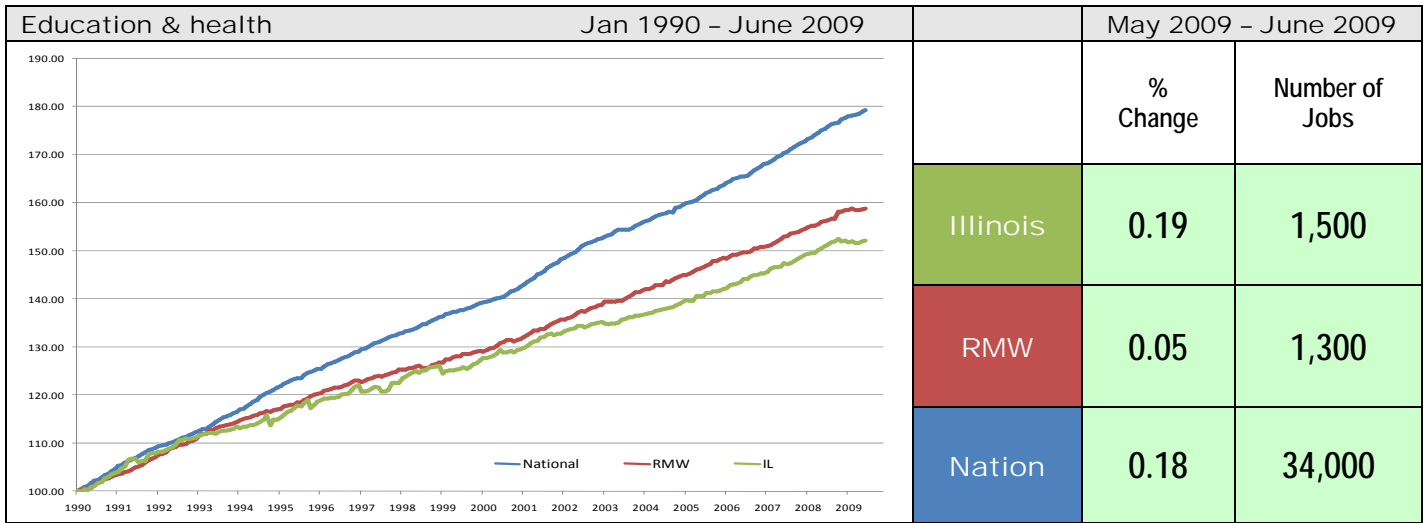
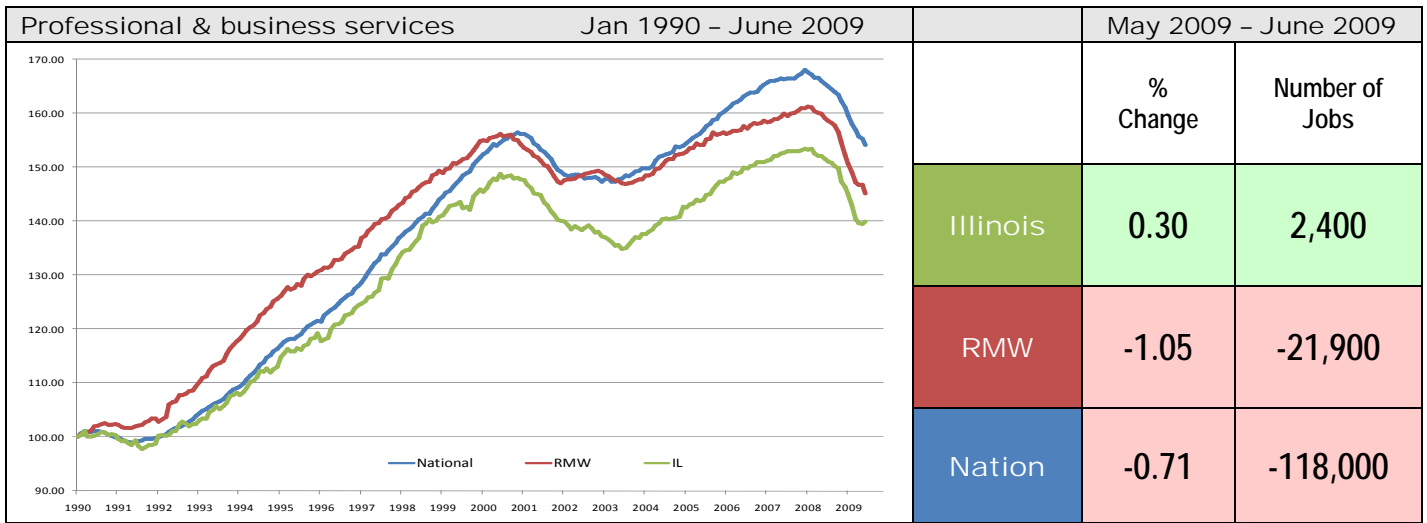
Sector notes	<ul style="list-style-type: none"> ▪ Illinois posted a job decline of -0.24% in June 2009. Six out of ten sectors recorded net losses. Compared to May 2009, relative performance gains were recorded for Manufacturing (-1.63% to -0.48%), Information (-1.19% to -0.28%), and Other Services (-0.08% to 0.69%), whereas Construction (-0.92% to -2.39%), Leisure and Hospitality (-0.08% to -0.80%), and Government (-0.36% to -0.68%) faced major loss in performance. ▪ In June, notable gains at the national level were recorded for the following sectors: <ul style="list-style-type: none"> ○ Education and Health Services: 34,000 (0.18%) ○ Other Services: 9,000 (0.17%) ▪ Major losses at the national level in June were: <ul style="list-style-type: none"> ○ Manufacturing: -136,000 (-1.13%) ○ Professional & business services: -118,000 (-0.71%) ○ Construction: -79,000 (-1.25%) ▪ For Illinois, major sectors posted job gains in June <ul style="list-style-type: none"> ○ Professional & business services: 2,400 (0.30%) ○ Other Services: 1,800 (0.69%) ○ Education and Health Services: 1,500 (0.19%) ▪ Following are the major sectors that lost jobs in June for Illinois: <ul style="list-style-type: none"> ○ Government: -5,800 (-0.68%) ○ Construction: -5,400 (-2.39%) ○ Trade transportation & utilities: -5,100 (-0.44%) ▪ For Illinois, in terms of 12-months aggregated account, Construction, Manufacturing, Trade, transportation & utilities, Information, Financial activities, Professional & business services, Leisure and Hospitality, Other Services, and Government all recorded net losses. Education & health services sector was the only positive contributor.
--------------	--

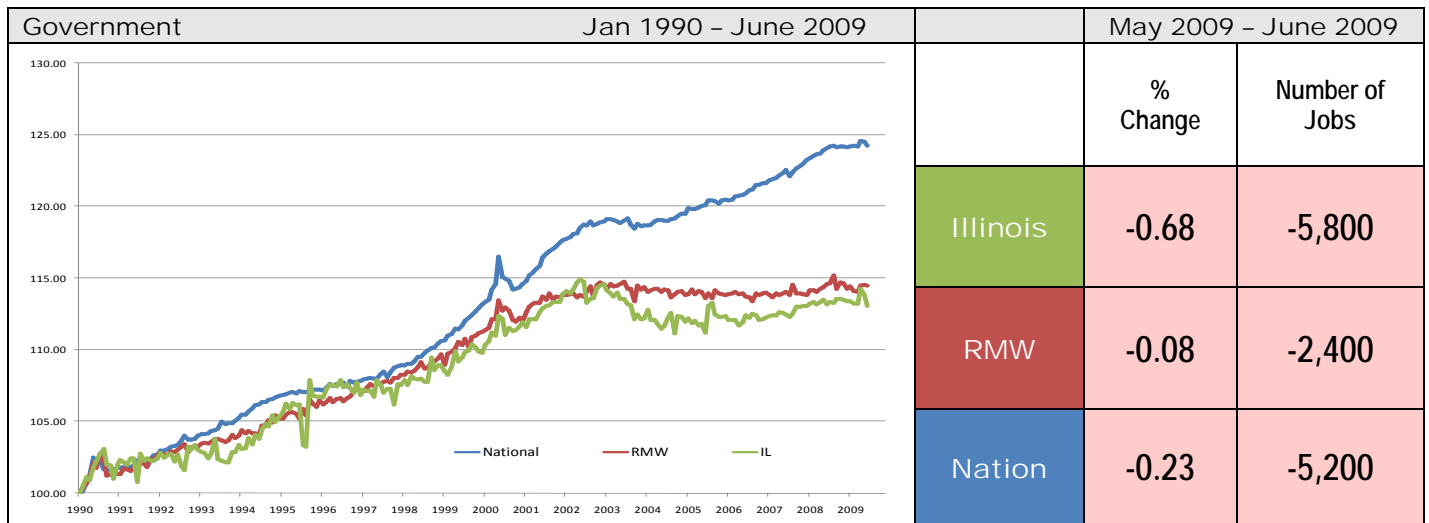
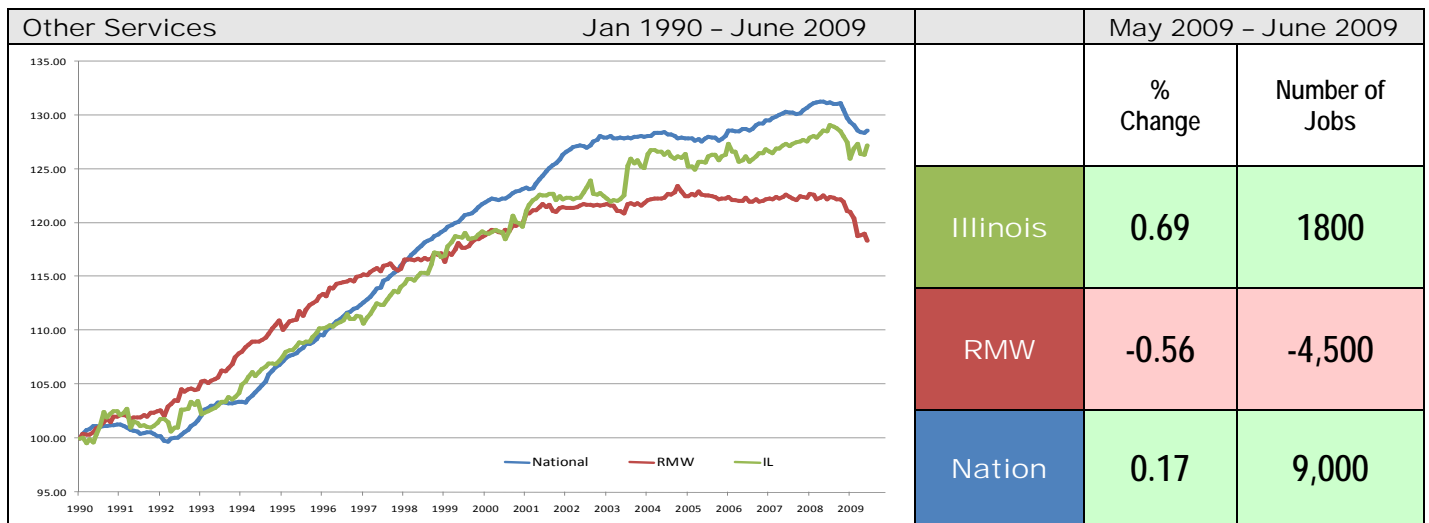
Total Non-farm Employment growth rate by sector Jan 1990 - June 2009

	Illinois				RMW	Nation
	vs. RMW	vs. Nation	Number of Jobs	Rate %	Rate %	Rate %
Construction	-	-	-6,800	-2.99	5.88	15.09
Manufacturing	-	-	-342,600	-37.09	-34.28	-33.40
Trade, transportation & utilities (TTU)	-	-	7,900	0.69	3.95	11.15
Information	-	-	-22,700	-17.38	-10.60	6.29
Financial activities	-	-	2,500	0.67	13.52	17.70
Professional & business services	-	-	227,600	39.87	45.18	54.18
Education & health	-	-	276,300	52.22	58.80	79.29
Leisure & hospitality	+	-	132,000	34.20	27.88	41.74
Other Services	+	-	55,800	27.17	18.33	28.57
Government	-	-	98,500	13.07	14.47	24.26









ABOUT: The Regional Economics Applications Laboratory (REAL) is a unit of the Institute of Government and Public Affairs of the University of Illinois. REAL undertakes impact and forecasting analyses of the Illinois and several Midwestern economies and is also engaged in similar analysis in several other countries including Brazil, Chile, Colombia, Japan. More information can be found at www.real.uiuc.edu.