


Illinois Job Index

Release 6/23/2009	Data Jan 1990 / May 2009	Issue 2009.6	www.real.uiuc.edu
----------------------	-----------------------------	-----------------	-------------------

For the June 2009 Illinois Job Index, a negative rating continues. Illinois, RMW and US all lost jobs in May 2009. However, the job loss rates for RMW and the Nation were smaller than Illinois for this month.

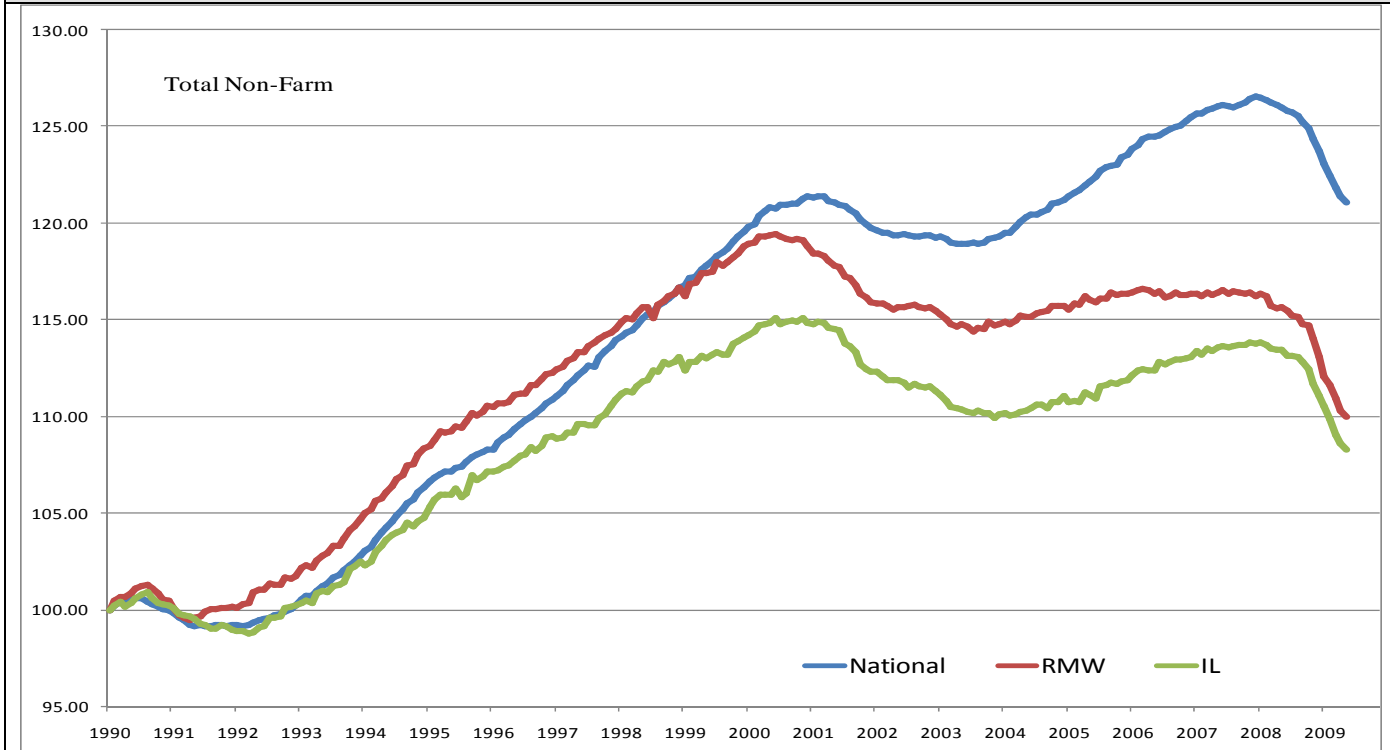
The monthly Illinois Job Index and MSA Report are issued monthly as tools for elected officials, policy leaders and the public. The objective is to enhance the understanding of the Illinois economy and business climate by comparing and measuring Illinois employment growth rates against those of the Rest of the Midwest (RMW: Indiana, Iowa, Michigan, Missouri, Ohio and Wisconsin) and the Nation. Data and analysis is provided by the Illinois Economic Observatory / Regional Economics Applications Laboratory, University of Illinois.

	June 2009 Negative		Apr 2009 - May 2009		Last 12 months		May 2009
		Total non-farm employment	Growth Rate %	Number of Jobs	Growth Rate%	Number of Jobs	Shadow U.R. *
		Nation	-0.26	-345,000	-3.90	-5,366,000	10.4%
		RMW	-0.26	-48,700	-4.91	-970,800	13.2%
		Illinois	-0.30	-17,400	-4.58	-273,500	11.5%

*REAL has estimated a *shadow unemployment rate*; this is calculated as the unemployment rate that would be observed if labor force participation rates matched the average for the 15-year period from 1990 to 2004.

Talking Points	
Illinois Notes	<ul style="list-style-type: none"> ▪ Illinois lost 17,400 jobs at a rate of -0.30% May 2009, compare to a revised 25,100 job loss in April. ▪ Illinois, RMW, and the nation all lost jobs in May. However, the job loss rates were the smallest among the first five months in 2009 for all three cases. Within the rest of Midwest, over 80% of job loss occurred in Michigan and Indiana. ▪ Since the beginning of the recession in Dec 2007, Illinois has posted negative job changes 17 times, and the state has lost 293,300 jobs in this recession. 254,100 jobs (86.6%) have been lost since Sep 2008. ▪ Through 2008, Illinois lost -11,808 jobs at a rate of -0.20% on average per month. However, the average monthly loss for the first five months of 2009 was -29,800 jobs at a rate of -0.51%. ▪ Over the last 12 months, Illinois payroll cut 273,500 jobs at a rate -4.58%, the rate is higher than the -3.81% growth of the nation. RMW continued with a negative rating (-4.91%) and has recorded a negative rate for 15 months in a row. ▪ Through May 2009, the cumulative job growth for Illinois, RMW and the Nation compared to January 1990 stood at 8.26%, 9.99%, and 21.07%, respectively. ▪ The shadow unemployment rates for the Illinois, RMW and the Nation were 11.5%, 13.2% and 10.4%, compared to 10.1%, 10.6% and 9.4% official unemployment rates for Illinois, RMW and Nation.
Nation Notes	<ul style="list-style-type: none"> ▪ The nation lost 345,000 jobs in May, down from a revised 504,000 job loss in April and a revised 652,000 job loss in March. The job losses in the first five months were over 2.9 million. ▪ Since the last employment peak in December 2007, the nation has lost 5,881,000 jobs. However, for RMW and Illinois, they have not yet recovered from their respective peaks in 2000. ▪ Since January 2008, the nation has posted negative growth for 17 months in a row with average growth rate -0.26%; the average growth rate for 2007 was 0.07%.

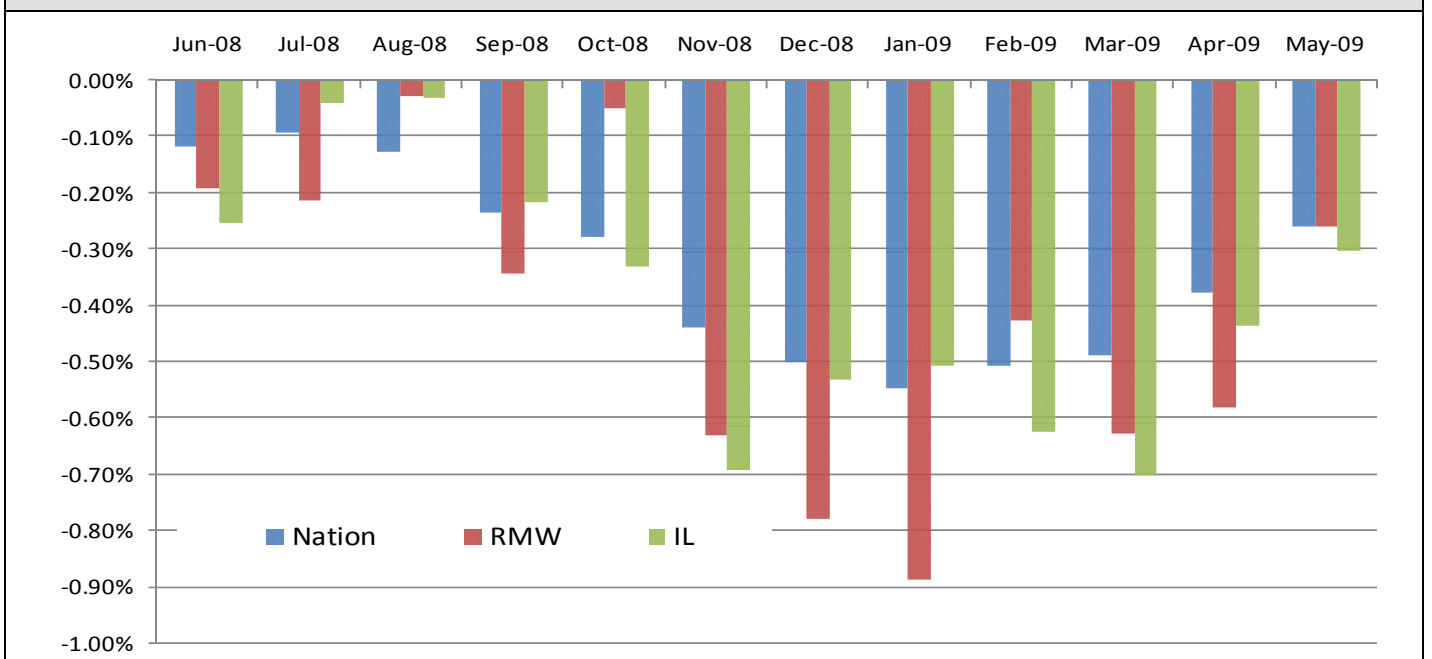
Total Non-farm Employment growth rate Jan 1990 – May 2009



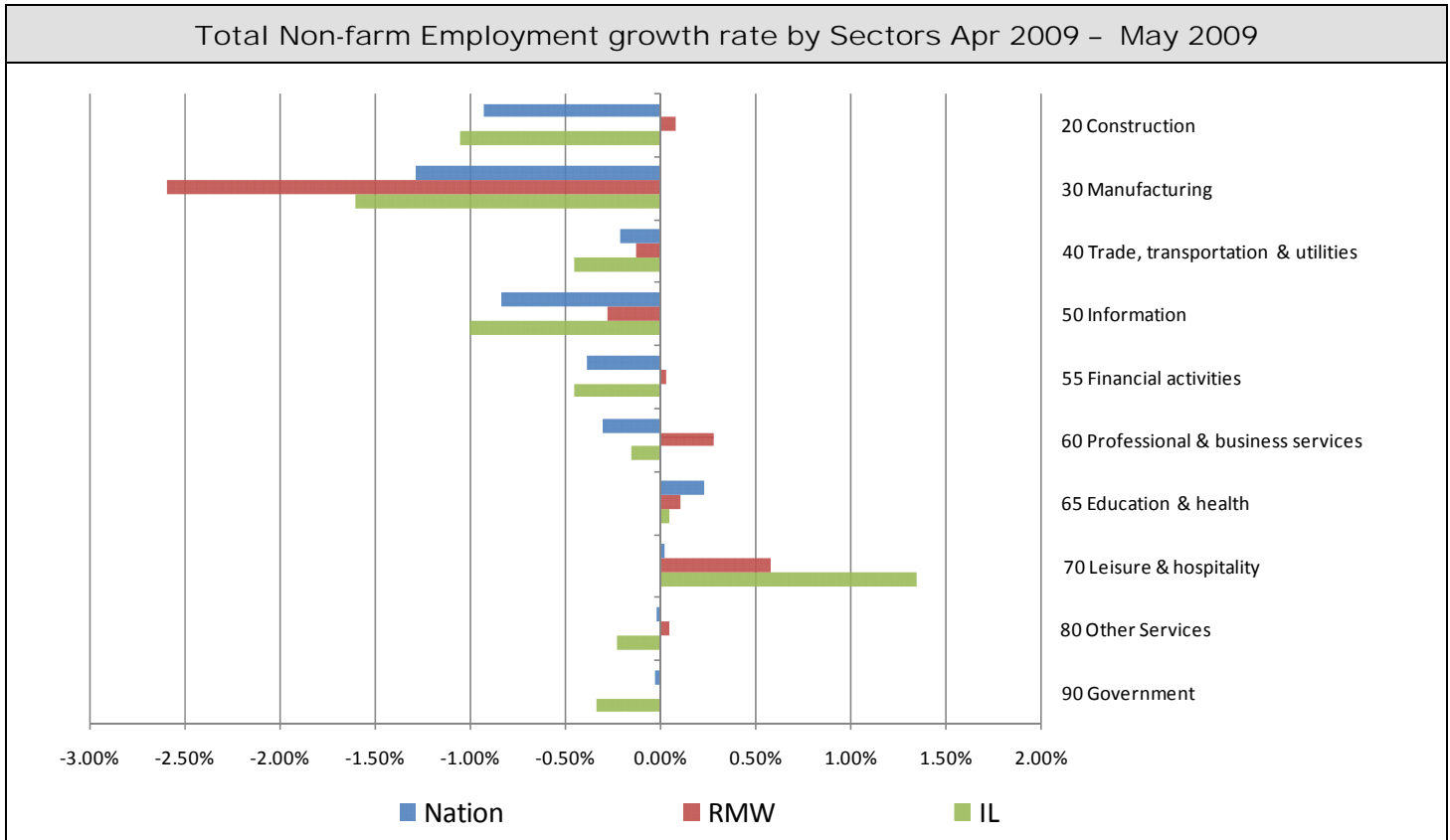
Total Non-farm Employment and Employment Index

	April 2009 Number of Jobs	Current Index to Jan 1990	Previous Peak Index to Jan 1990	Changes in Jobs since Jan 1990	Changes in Jobs since Previous Peak
Nation	132,151,000	121.07	126.57 (Dec-2007)	23,000,000	-6,001,000
RMW	18,789,600	109.99	119.44 (Jun-2000)	1,706,600	-1,617,000
Illinois	5,700,400	108.26	115.08 (Nov-2000)	434,800	-359,000

Last 12 months Total Non-farm Employment growth rate June 2008 – May 2009



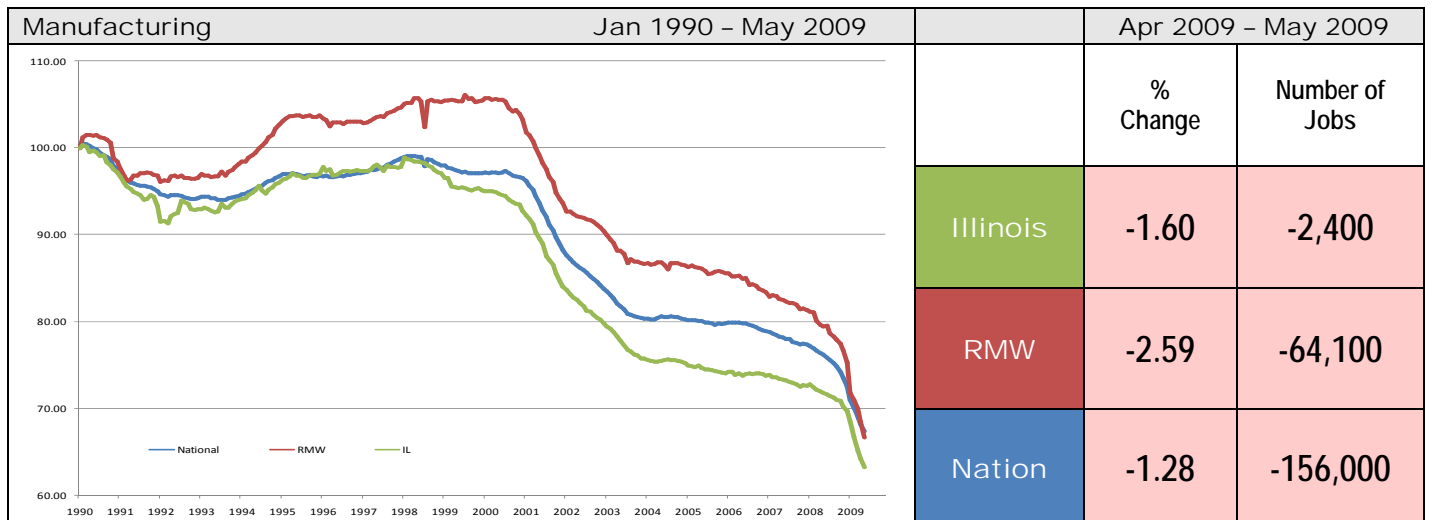
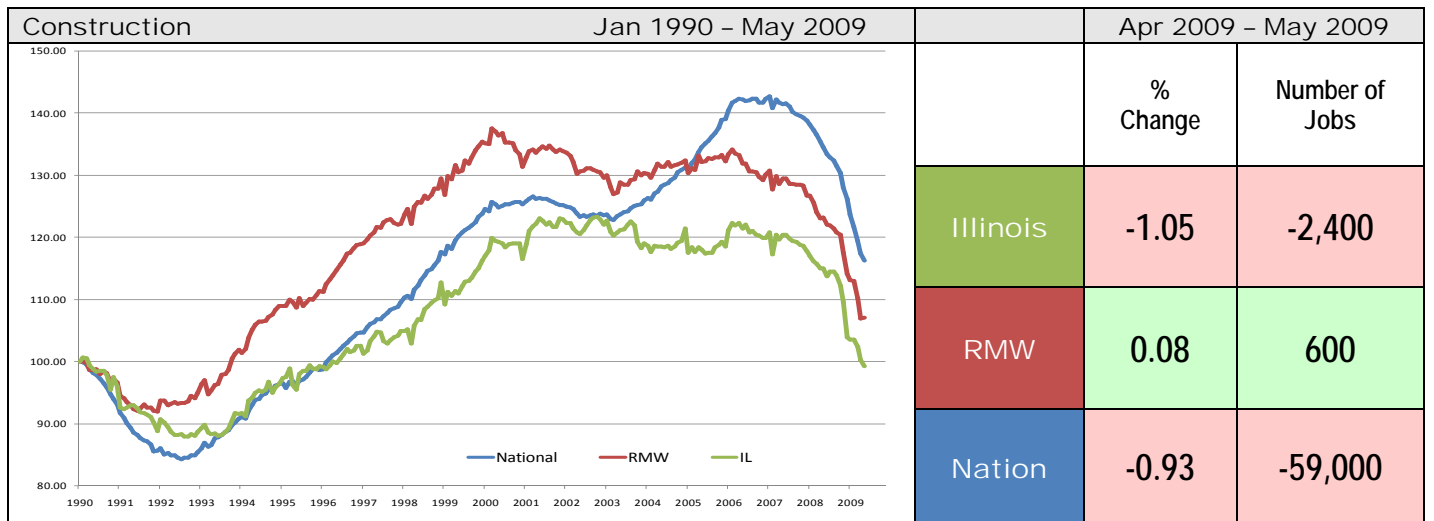
By employment sector:

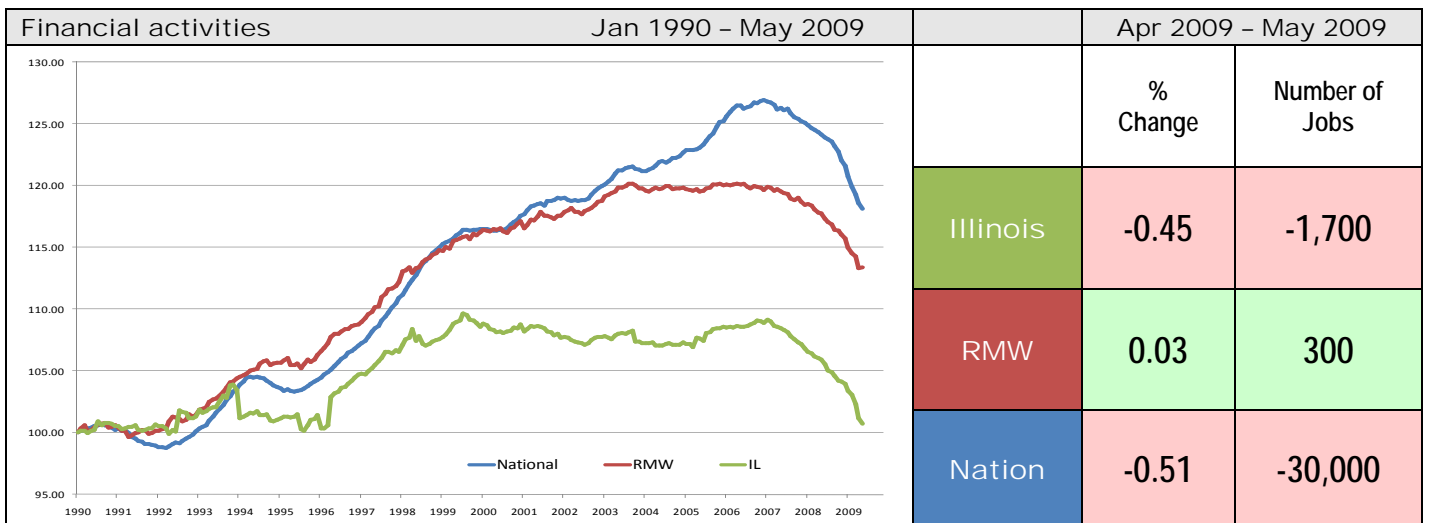
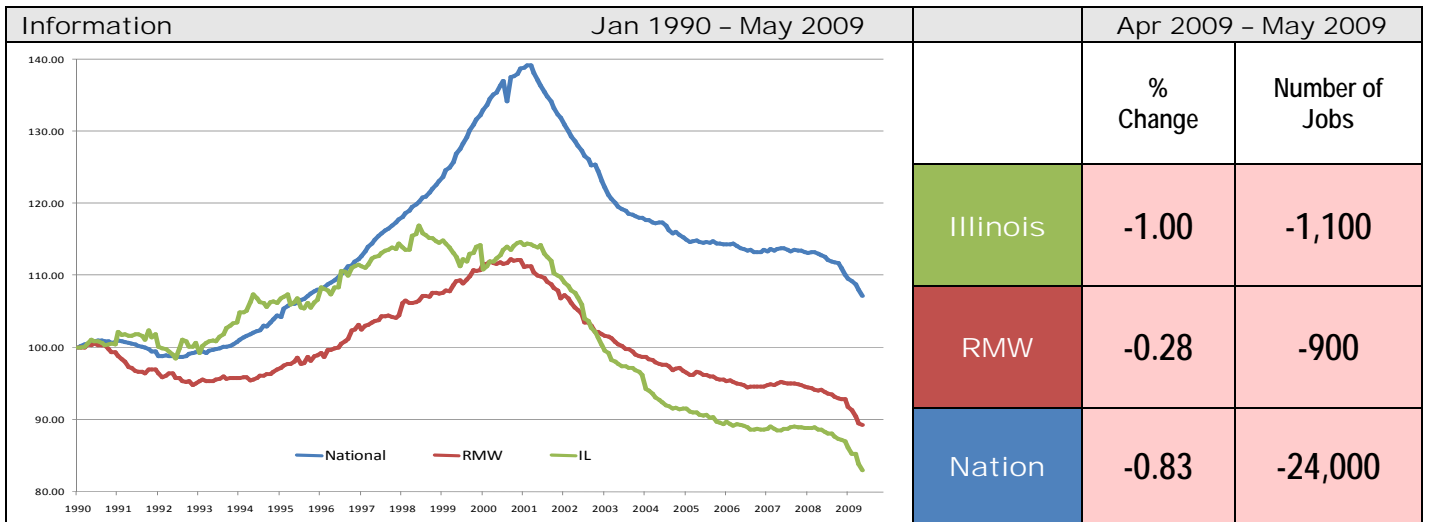
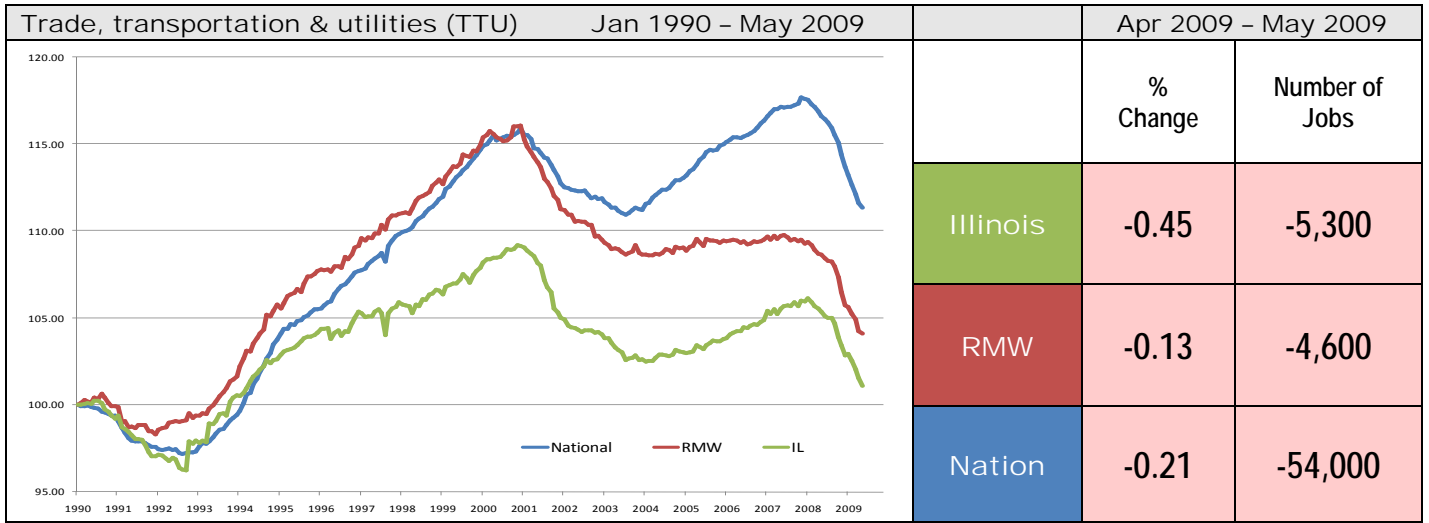


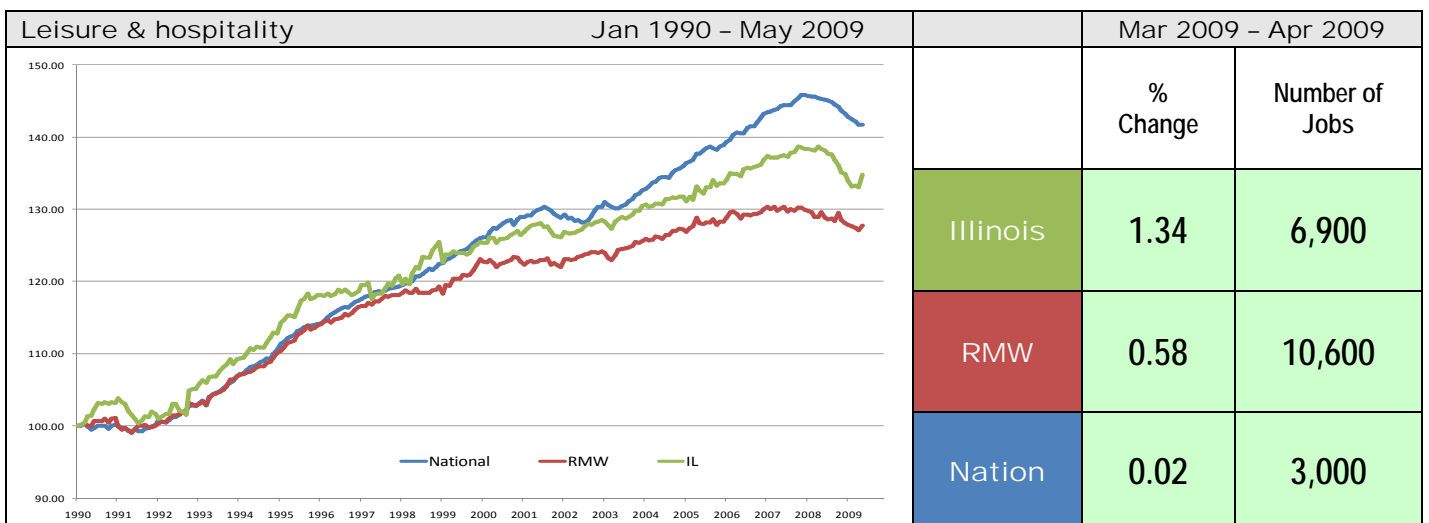
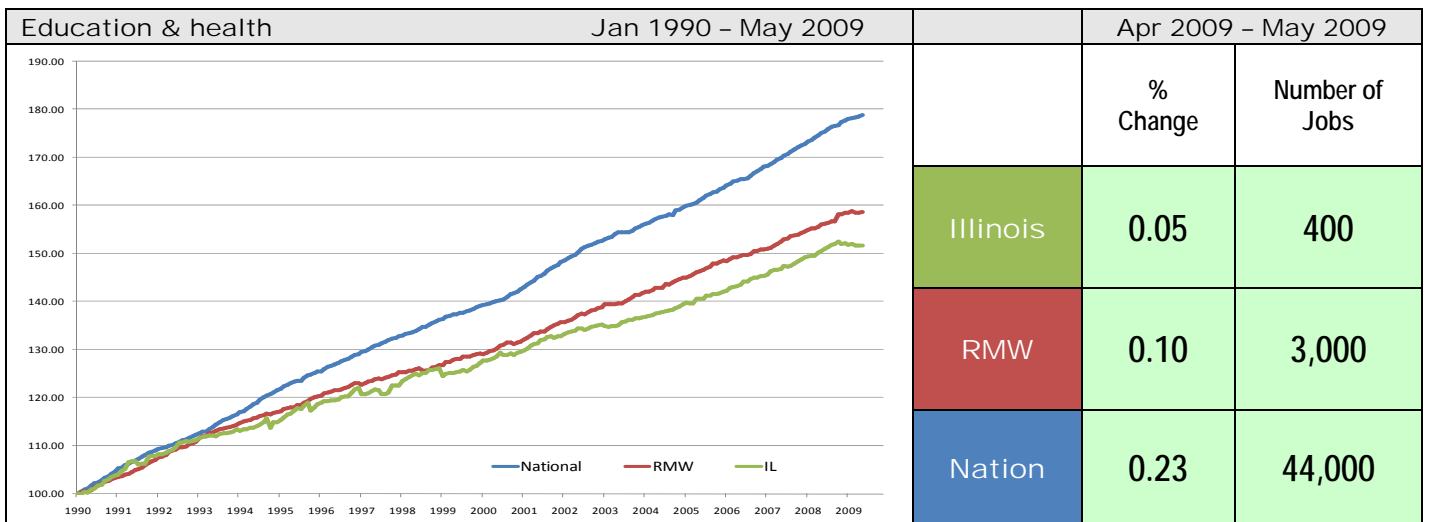
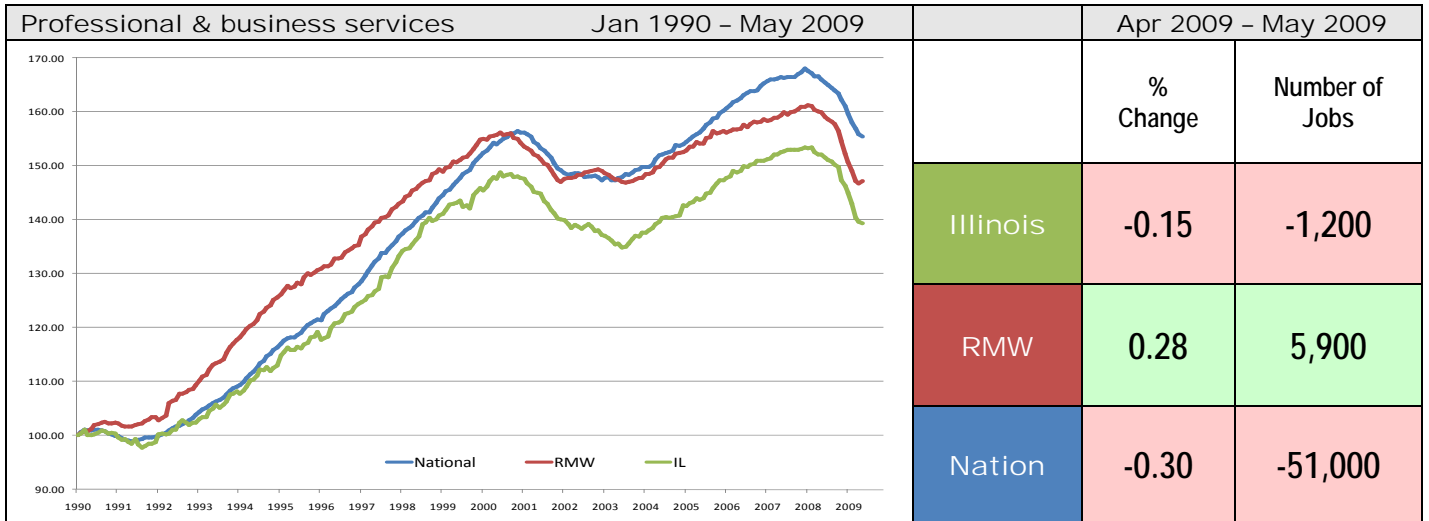
Sector notes	<ul style="list-style-type: none"> ▪ Illinois posted a job decline of -0.30% in May 2009. Eight out of ten sectors recorded net losses. Compared to April 2009, relative performance gains were recorded for Leisure and Hospitality (-0.17% to 1.34%), Construction (-2.06% to 1.05%), and Financial activities (-1.08% to -0.45%) whereas Construction (-1.06% to -2.06) faced major loss in performance. ▪ In May, notable gains at the national level were recorded for the following sectors: <ul style="list-style-type: none"> ○ Education and Health Services: 44,000 (0.23%) ○ Leisure and Hospitality: 3,000 (0.02%) ▪ Major losses at the national level in May were: <ul style="list-style-type: none"> ○ Manufacturing: -156,000 (-1.28%) ○ Trade transportation & utilities: -54,000 (-0.21%) ○ Construction: -59,000 (-0.92%) ▪ For Illinois, two sectors posted job gains in May <ul style="list-style-type: none"> ○ Leisure and Hospitality: 6,900 (1.34%) ○ Education and Health Services: 400 (0.05%) ▪ Following are the major sectors that lost jobs in May for Illinois: <ul style="list-style-type: none"> ○ Manufacturing: -9,500 (-1.60%) ○ Trade transportation & utilities: -5,300 (-0.45%) ○ Government: -2,900 (-0.34%) ▪ For Illinois, in terms of 12-months aggregated account, Construction, Manufacturing, Trade, transportation & utilities, Information, Financial activities, Professional & business services, Leisure and Hospitality, and Other Services all recorded net losses. Education & health services and Government were the only two positive contributors.
--------------	---

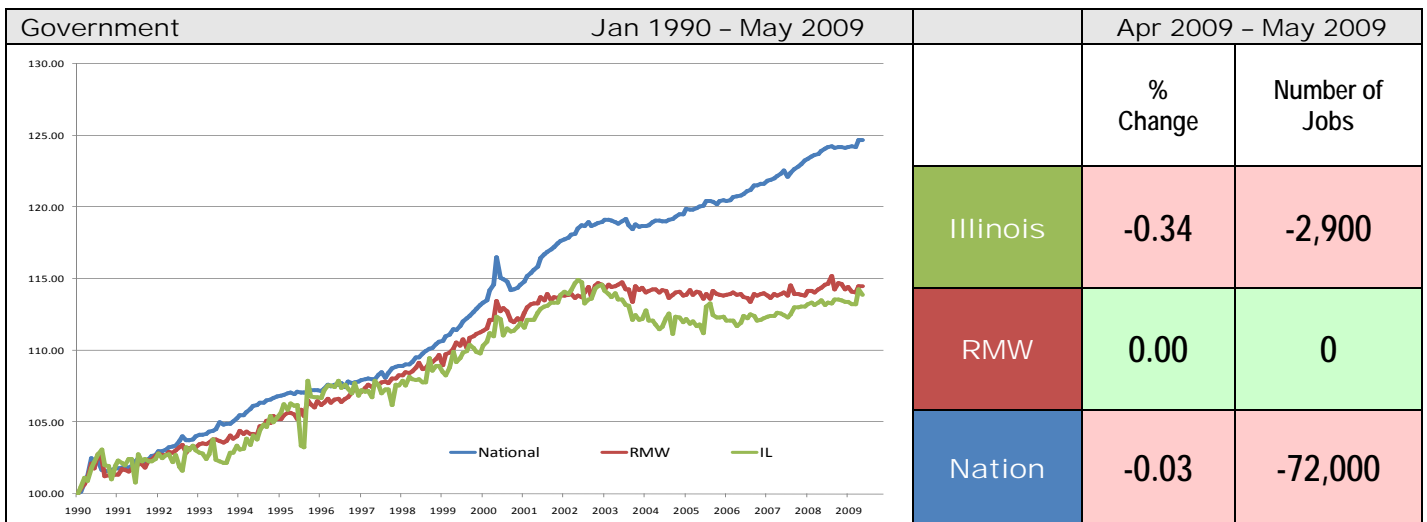
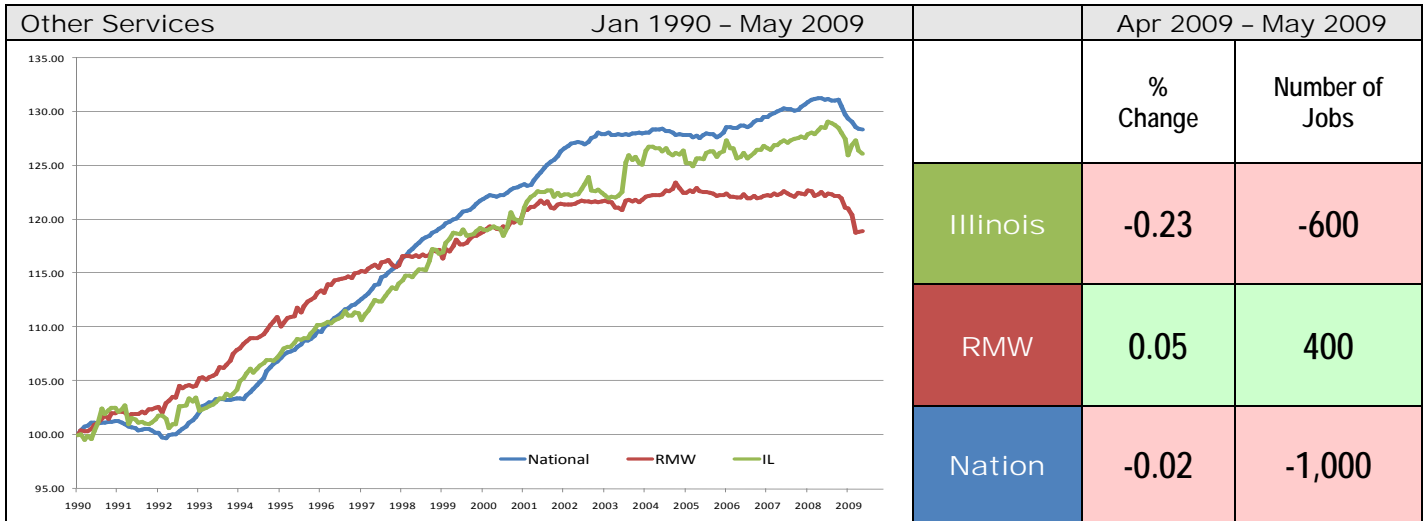
Total Non-farm Employment growth rate by sector Jan 1990 - May 2009

	Illinois				RMW	Nation
	vs. RMW	vs. Nation	Number of Jobs	Rate %	Rate %	Rate %
Construction	-	-	-1,700	-0.75	7.05	16.25
Manufacturing	-	-	-339,600	-36.77	-33.33	-32.66
Trade, transportation & utilities (TTU)	-	-	12,600	1.10	4.09	11.36
Information	-	-	-22,200	-17.00	-10.74	7.15
Financial activities	-	-	2,700	0.72	13.36	18.12
Professional & business services	-	-	224,800	39.38	47.21	55.39
Education & health	-	-	273,700	51.73	58.73	78.91
Leisure & hospitality	+	-	134,400	34.82	27.81	41.73
Other Services	+	-	53,600	26.10	18.94	28.38
Government	-	-	104,500	13.86	14.50	24.67









ABOUT: The Regional Economics Applications Laboratory (REAL) is a unit of the Institute of Government and Public Affairs of the University of Illinois. REAL undertakes impact and forecasting analyses of the Illinois and several Midwestern economies and is also engaged in similar analysis in several other countries including Brazil, Chile, Colombia, Japan. More information can be found at www.real.uiuc.edu.