


Illinois Job Index

Release 3/29/2010	Data Jan 1990 / Feb 2010	Issue 2010.3	www.real.illinois.edu
----------------------	-----------------------------	-----------------	-----------------------

Note: BLS revised its estimates for the number of jobs and seasonal adjustment method at the beginning of 2010.

For March Illinois Job Index, Illinois, RMW and the nation have little changes for the payroll employment.

The monthly Illinois Job Index and MSA Report are issued monthly as tools for elected officials, policy leaders and the public. The objective is to enhance the understanding of the Illinois economy and business climate by comparing and measuring Illinois employment growth rates against those of the Rest of the Midwest (RMW: Indiana, Iowa, Michigan, Missouri, Ohio and Wisconsin) and the Nation. Data and analysis is provided by the Illinois Economic Observatory / Regional Economics Applications Laboratory, University of Illinois.

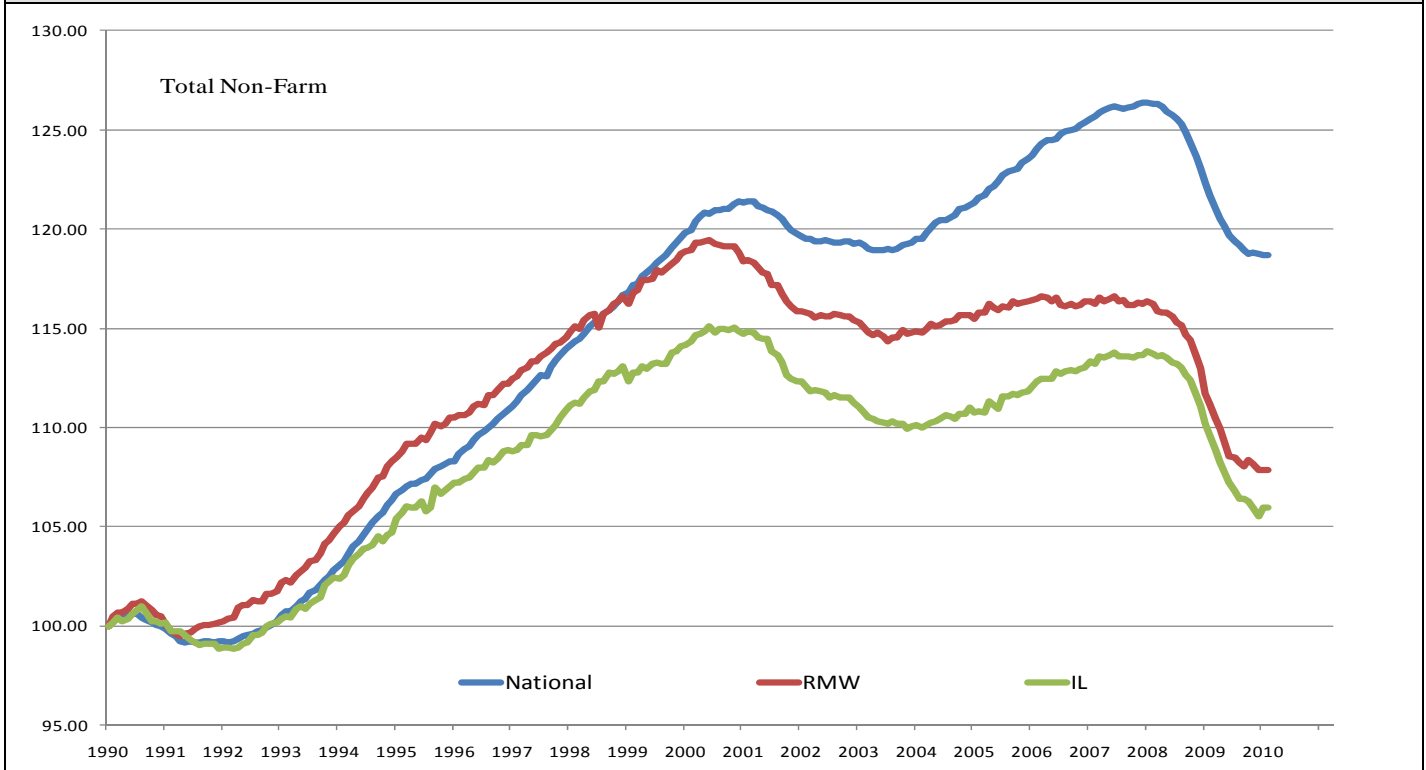
	March 2010 Negative		Jan 2009–Feb 2010		Last 12 months		Feb 2010
		Total non-farm employment	Growth Rate %	Number of Jobs	Growth Rate%	Number of Jobs	Shadow U.R. *
		Nation	-0.03	-36,000	-2.48	-3,297,000	12.2%
		RMW	-0.02	-2,800	-2.99	-568,300	14.6%
		Illinois	-0.02	-900	-3.33	-192,200	13.0%

*REAL has estimated a *shadow unemployment rate*; this is calculated as the unemployment rate that would be observed if labor force participation rates matched the average for the 15-year period from 1990 to 2004.

Talking Points

Illinois Notes	<ul style="list-style-type: none"> ▪ Illinois shed 900 jobs at a rate of -0.02% in February 2010, compared to a revised 23,300 job gain in January 2010. The three-month moving average of jobs, a more stable measure of labor market, was up by 200 jobs. ▪ In February 2010, the Nation cut 36,000 jobs at a rate of -0.03%, compared with a revised 26,000 job loss in January. The three-month moving average of jobs was down by 57,000 jobs per month. ▪ RMW cut 2,800 jobs in February after a revised 5,600 job gain in January. The three-month moving average was down by 17,300 jobs per month. ▪ Since the beginning of the recession in Dec 2007, Illinois has posted negative job changes 24 times and only twice job gain. The state of Illinois has lost 405,400 jobs in this recession. ▪ Five sectors in Illinois have employment levels in this month that are lower than January 1990 - Manufacturing, Information, Construction, Trade, transportation & utilities, and Financial activities. ▪ Over the last 12 months, Illinois shed 192,200 jobs at a rate -3.33%. ▪ Through February 2010, the cumulative job growth for Illinois, RMW and the Nation compared to January 1990 stood at 5.96%, 7.83%, and 18.67%, respectively. ▪ The shadow unemployment rates for the Illinois, RMW and the Nation were 13.0%, 14.6% and 12.2%, compared to official unemployment rates of 11.4%, 10.6% and 9.7%.
Nation Notes	<ul style="list-style-type: none"> ▪ The nation lost 36,000 jobs in February; fewer than the 68,000 jobs loss that economists expected. The shadow unemployment rate fell from 12.3% to 12.2%. ▪ Since the last employment peak in December 2007, the nation has lost 8,425,000 jobs. However, for RMW and Illinois, they have not yet recovered from their respective peaks in 2000. ▪ Since December 2007, the nation has posted monthly negative growth for 25 months with average monthly growth rate -0.23%; the average growth rate for 2007 was 0.07%.

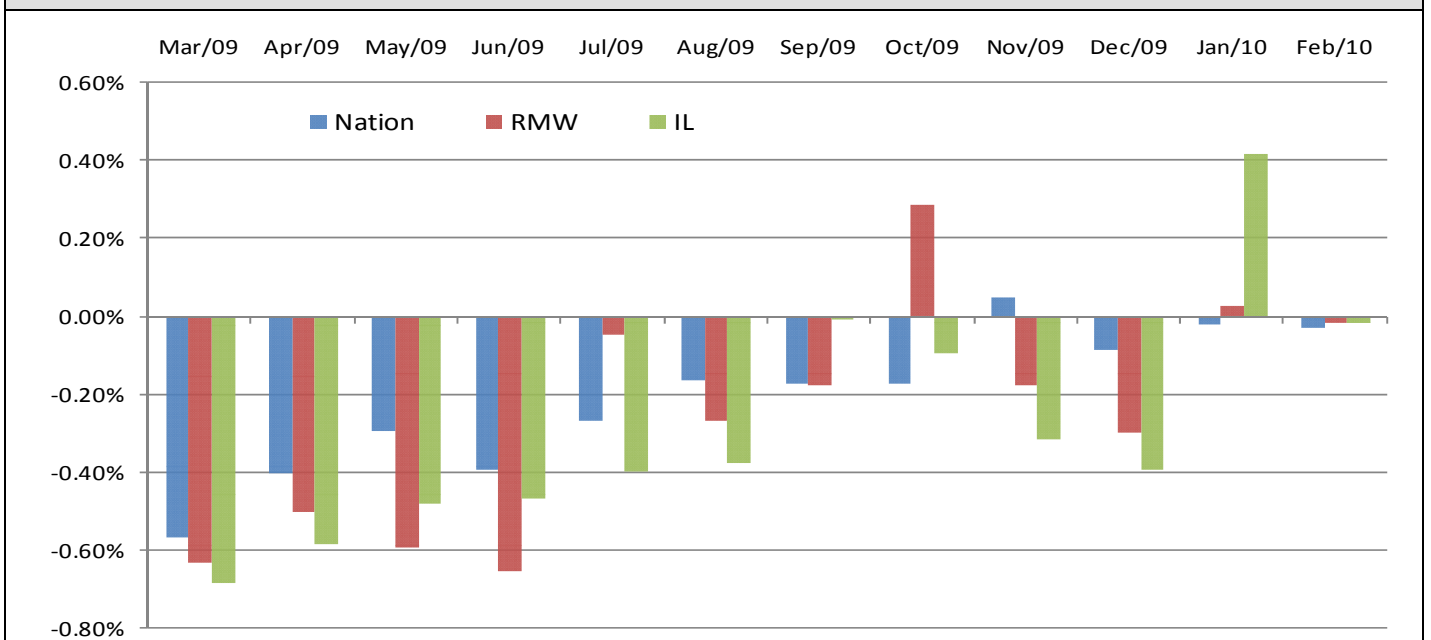
Total Non-farm Employment growth rate Jan 1990 – Feb 2010



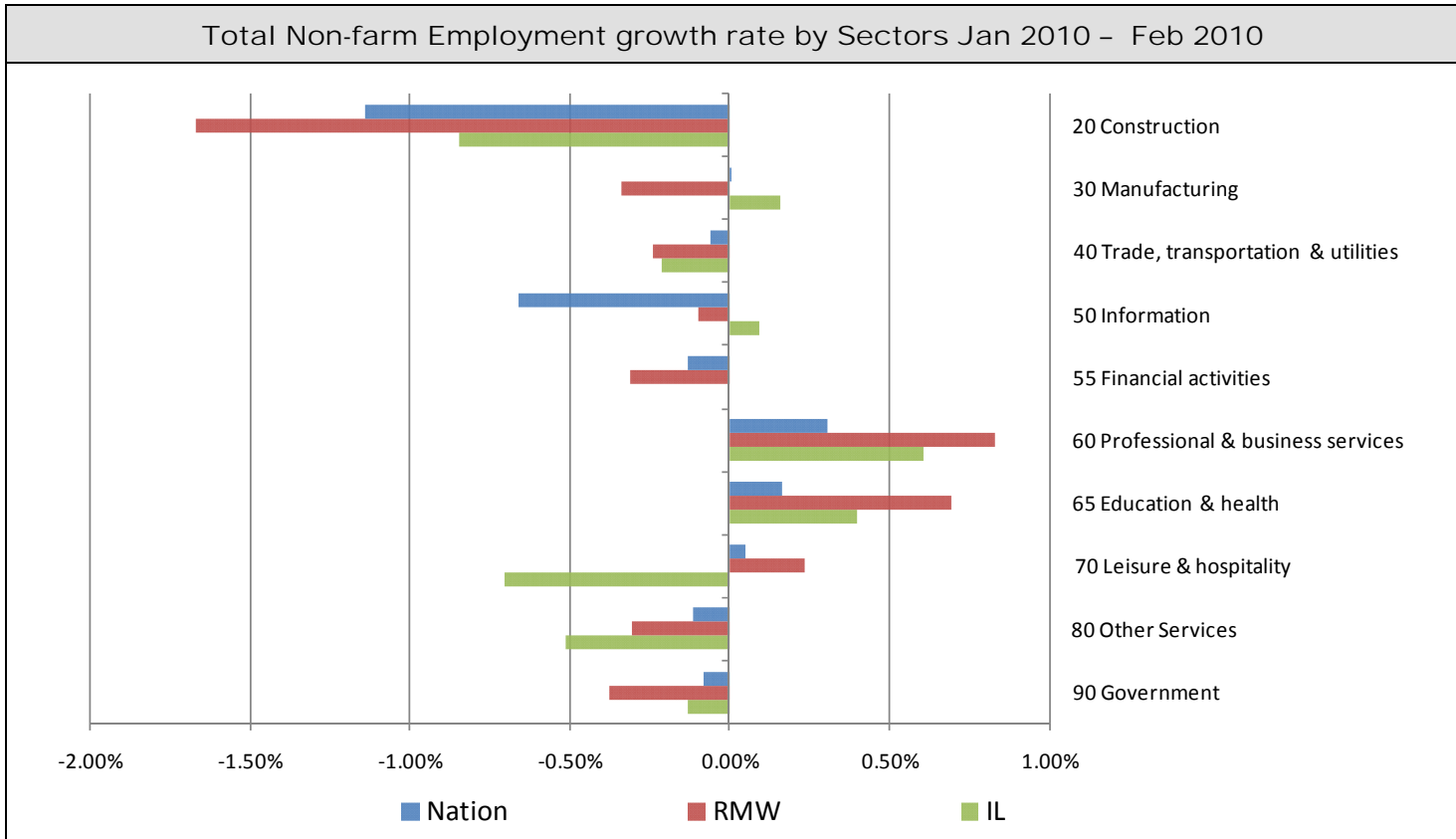
Total Non-farm Employment and Employment Index

	Feb 2010 Number of Jobs	Current Index to Jan 1990	Previous Peak Index to Jan 1990	Changes in Jobs since Jan 1990	Changes in Jobs since Pervious Peak
Nation	129,526,000	118.67	126.57 (Dec-2007)	20,375,000	-8,425,000
RMW	18,424,800	107.83	119.44 (Jun-2000)	1,338,400	-1,984,700
Illinois	5,580,600	105.96	115.08 (Nov-2000)	313,800	-478,900

Last 12 months Total Non-farm Employment Growth Rate March 2009 – Feb 2010



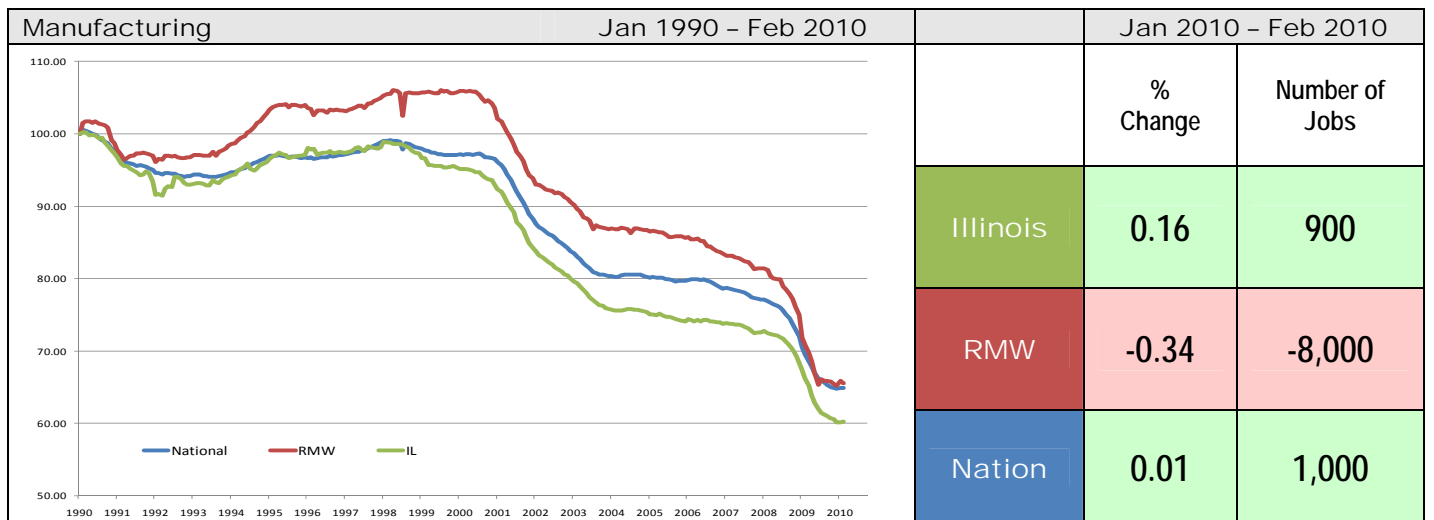
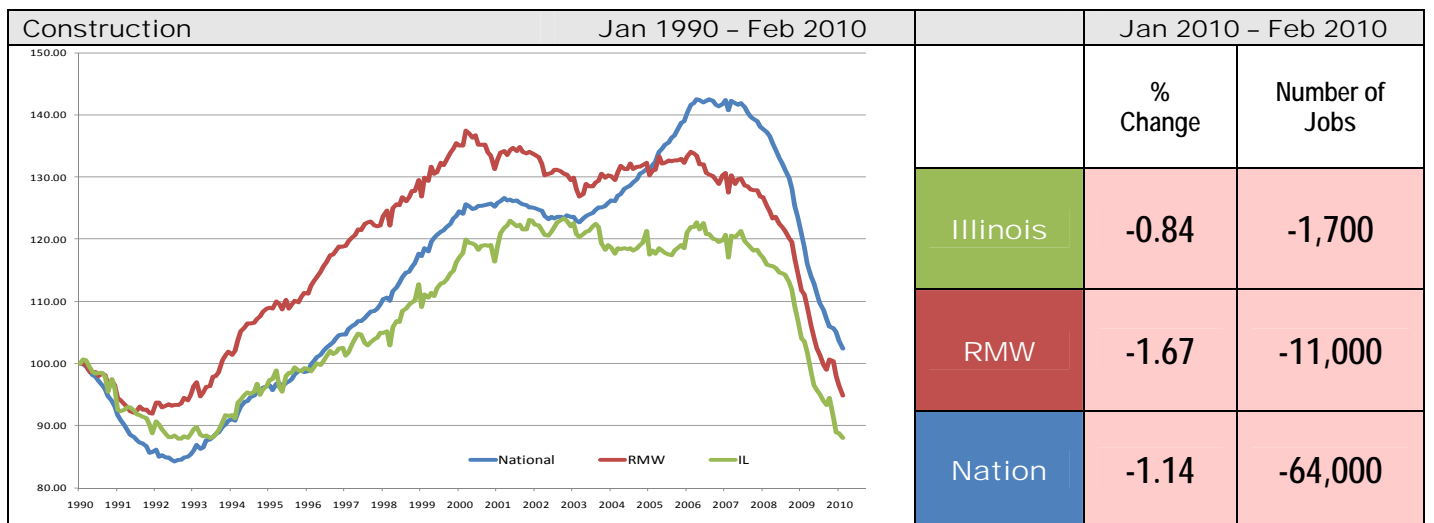
By employment sector:

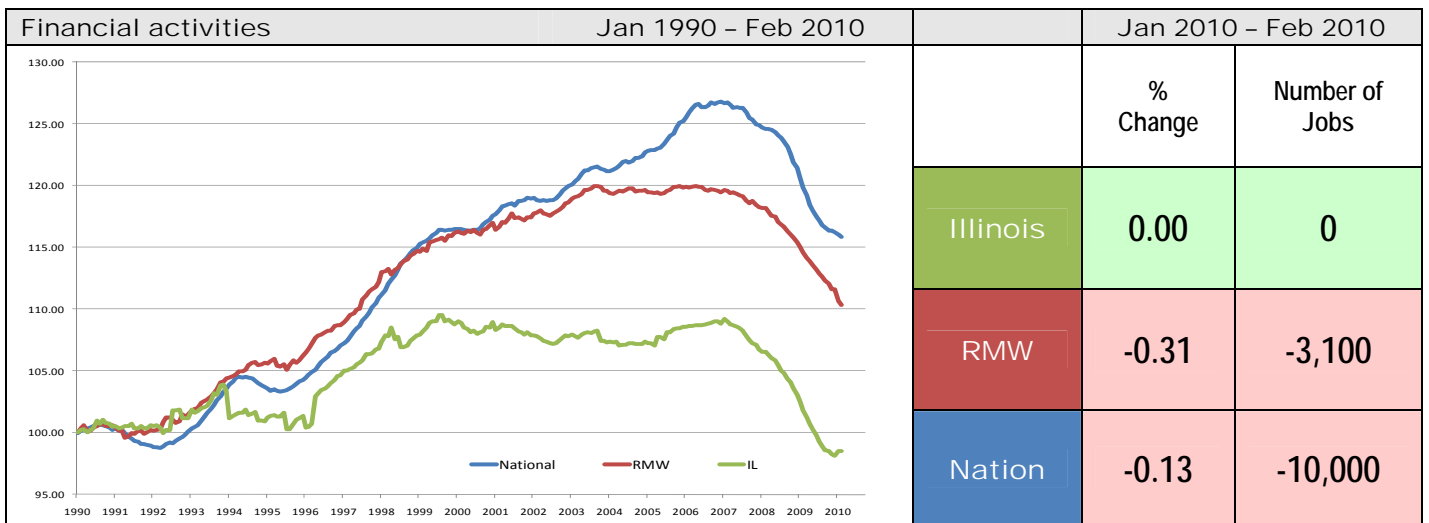
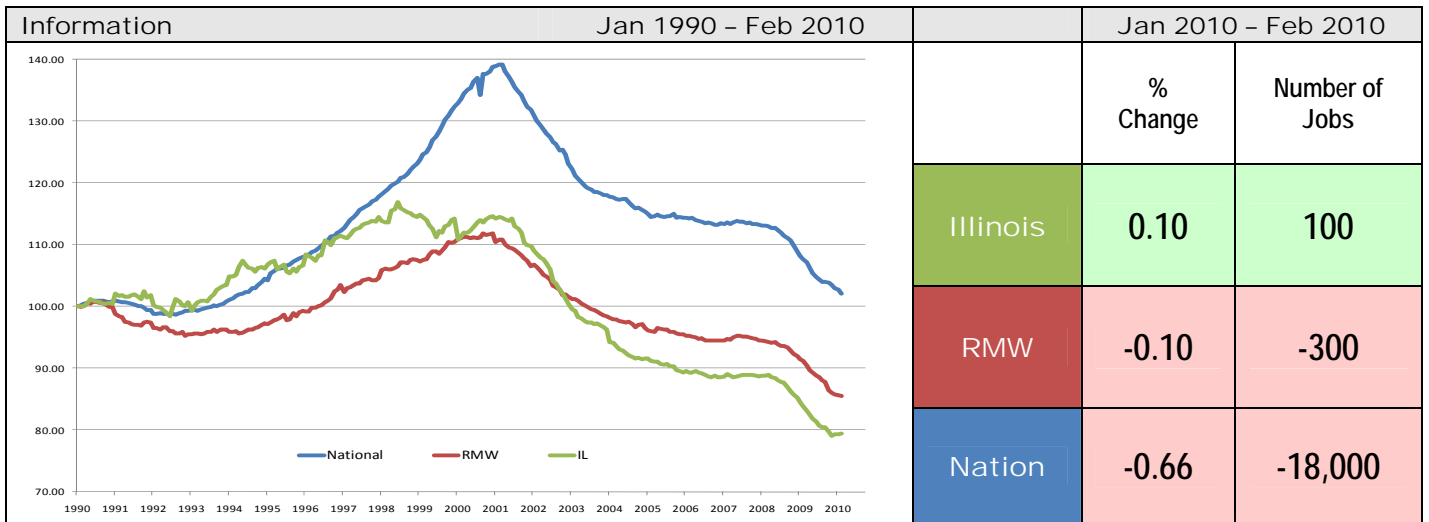
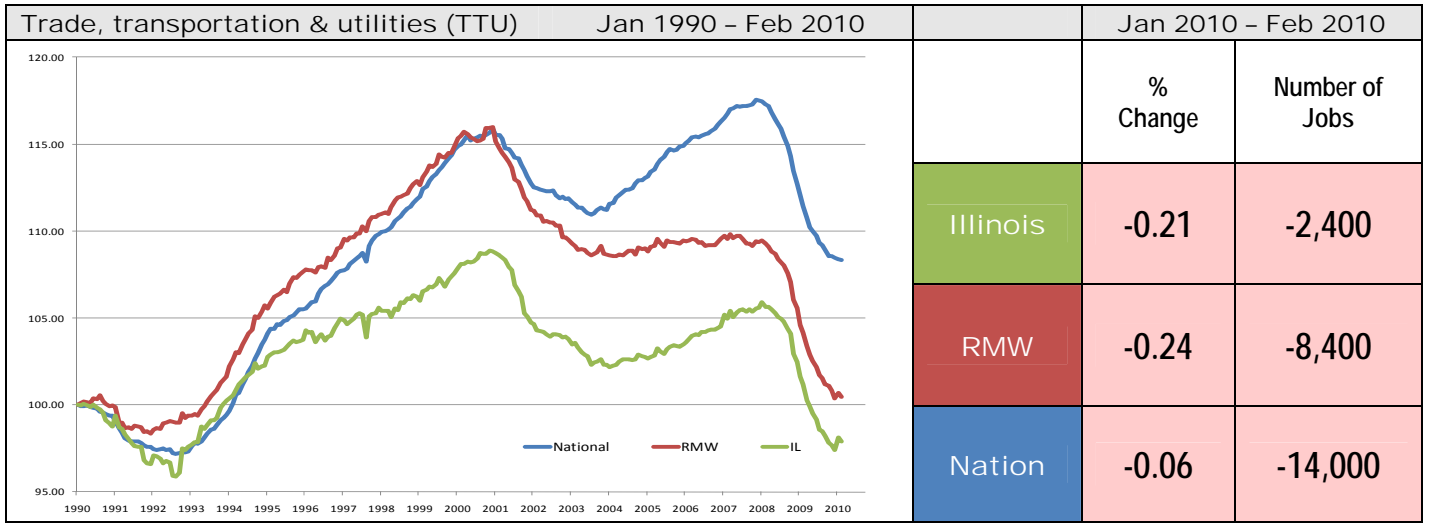


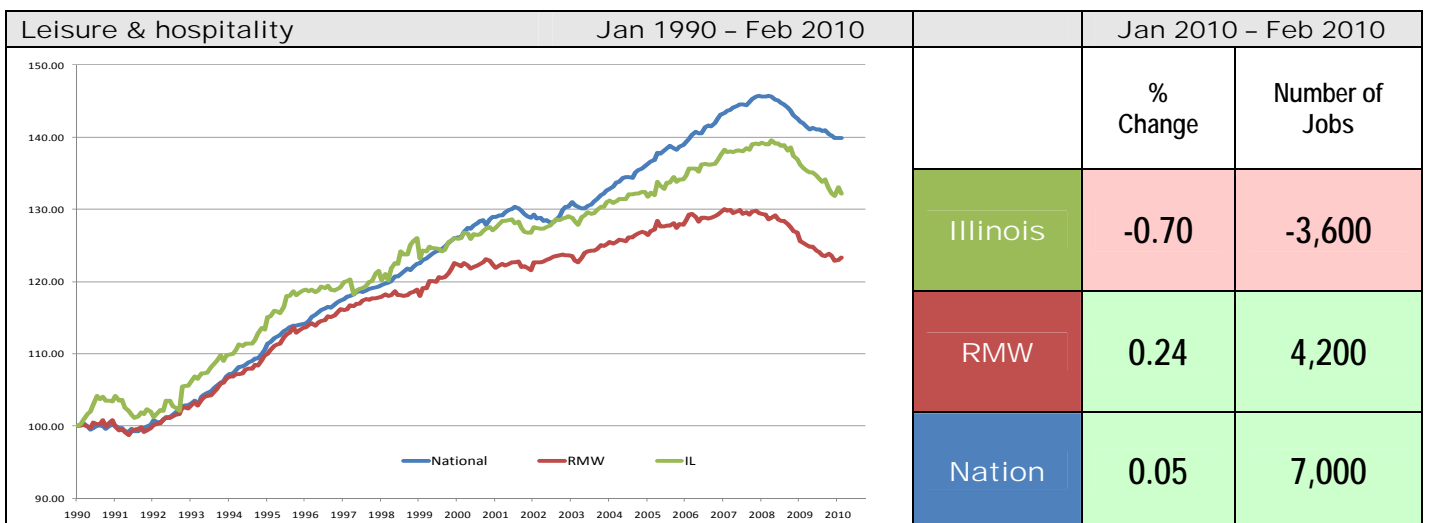
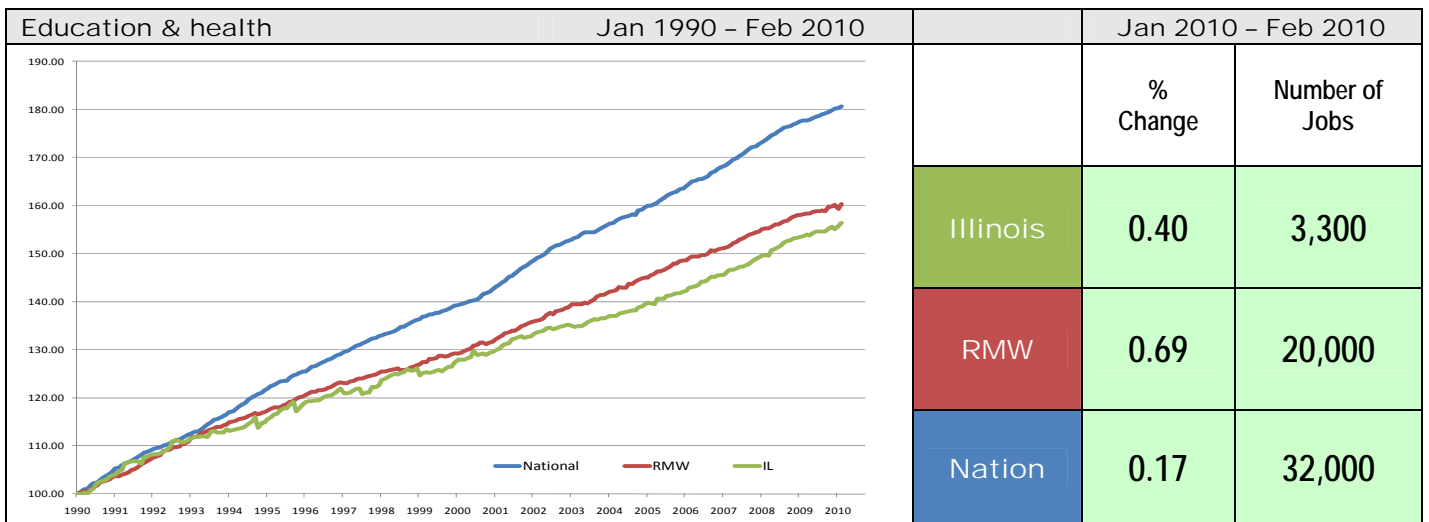
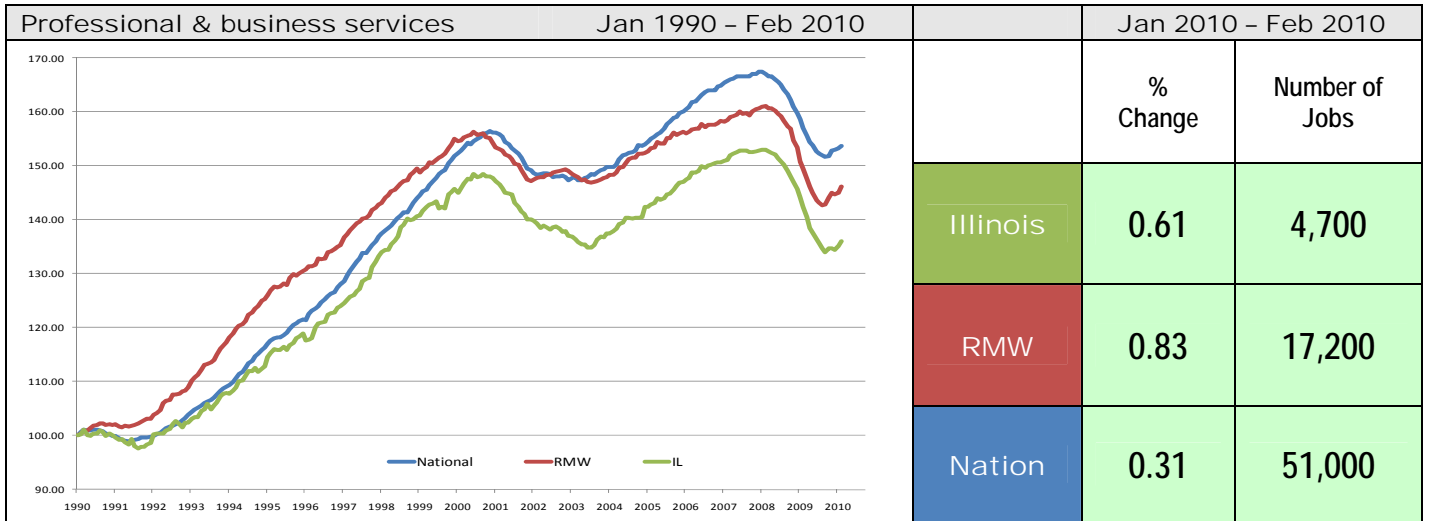
Sector notes	<ul style="list-style-type: none"> ▪ Illinois posted a job reduction of -0.02% in February 2010. Four out of ten sectors recorded net gains. Compared to January, only Manufacturing (0.02% to 0.16%) had a relative performance gain, while Leisure and hospitality (0.91% to -0.70%), Other Services (0.67% to -0.51%), Trade transportation & utilities (0.71% to -0.21%), Leisure and hospitality (-0.22% to 0.81%), faced major losses in performance. ▪ In February at the national level, top three job-gain sectors: <ul style="list-style-type: none"> ○ Professional and business services: 51,000 (0.31%) ○ Education and Health Services: 32,000 (0.31%) ○ Manufacturing: 1,000 (0.01%) ▪ Major losses at the national level in February were: <ul style="list-style-type: none"> ○ Construction: -64,000 (-1.14%) ○ Information: -18,000 (-0.66%) ○ Trade transportation& utilities: -14,000 (-0.06%) ▪ For Illinois, top three job-gain sectors in February: <ul style="list-style-type: none"> ○ Professional and business services: 4,700 (0.61%) ○ Education and Health Services: 3,300 (0.40%) ○ Manufacturing: 900 (0.16%) ▪ Following are the major sectors that lost jobs in February for Illinois: <ul style="list-style-type: none"> ○ Leisure & hospitality: -3,600 (-0.70%) ○ Trade transportation& utilities: -2,400 (-0.21%) ○ Construction: -1,700 (-0.84%) ▪ For Illinois, five sectors have employment below 1990 levels. They are Manufacturing with -366,500 fewer jobs, Information down -26,900 jobs, Construction down -27,300 jobs, Trade transportation& utilities down -24,100 jobs, and Financial activities down -5,600 jobs, than their 1990 employment levels, respectively.
--------------	--

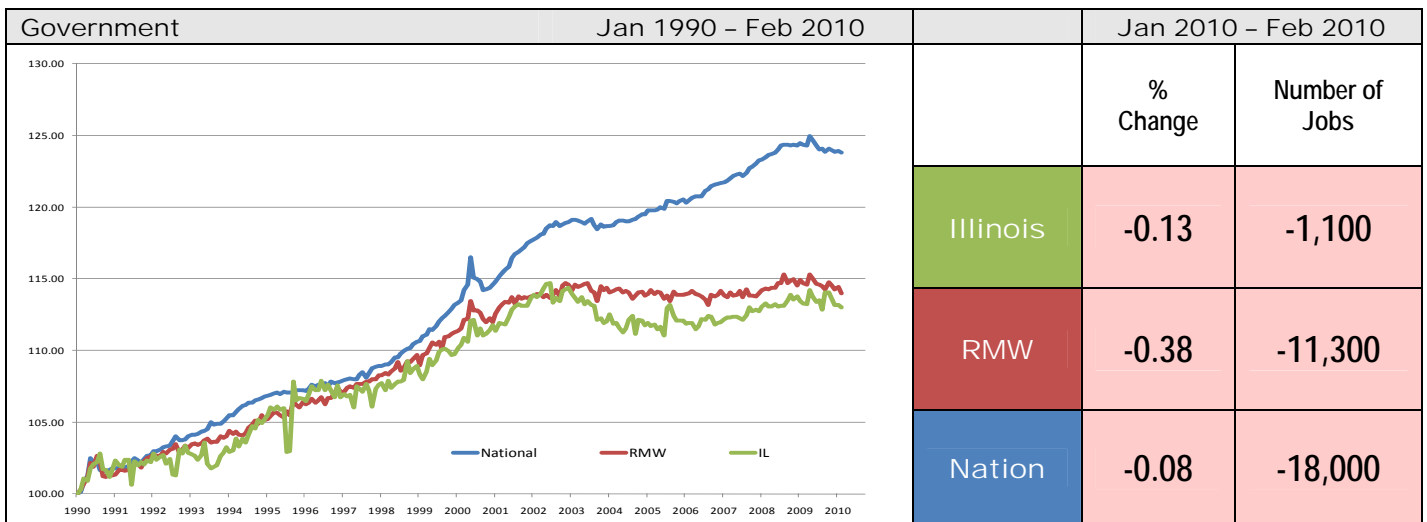
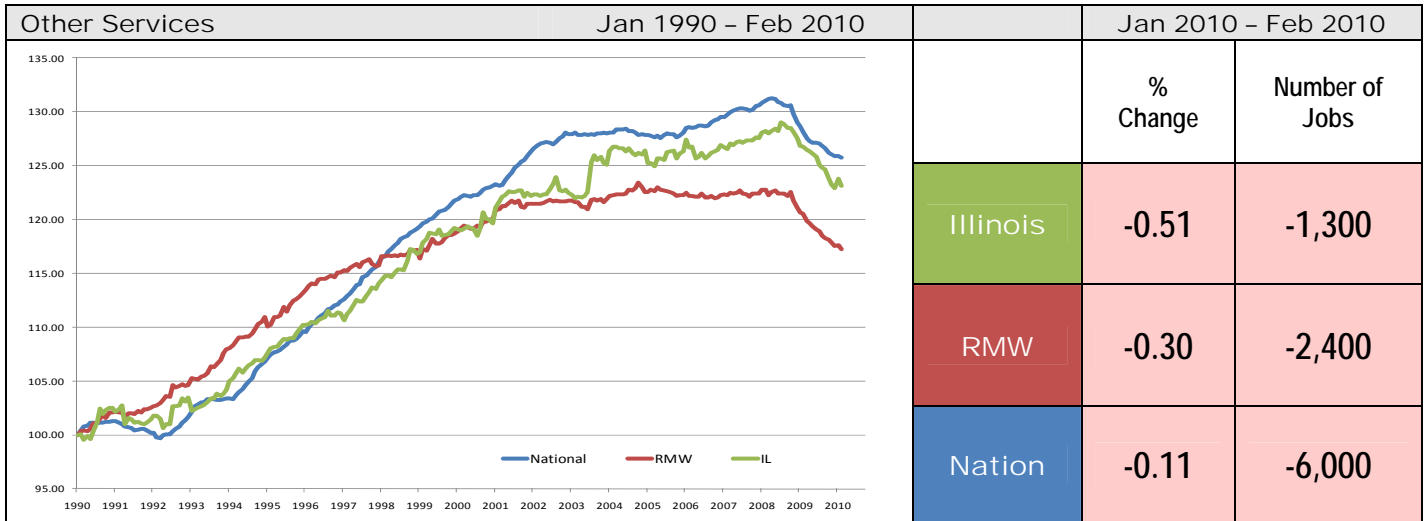
Total Non-farm Employment growth rate by sector Jan 1990 - Feb 2010

	Illinois				RMW	Nation
	vs. RMW	vs. Nation	Number of Jobs	Rate %	Rate %	Rate %
Construction	-	-	-27,300	-12.01	-5.11	2.45
Manufacturing	-	-	-366,500	-39.77	-34.41	-35.08
Trade, transportation & utilities (TTU)	-	-	-24,100	-2.09	0.44	8.33
Information	-	-	-26,900	-20.60	-14.49	2.10
Financial activities	-	-	-5,600	-1.50	10.34	15.88
Professional & business services	-	-	205,900	36.03	46.15	53.73
Education & health	-	-	298,400	56.41	60.38	80.68
Leisure & hospitality	+	-	123,600	32.17	23.30	39.91
Other Services	+	-	47,500	23.13	17.27	25.75
Government	-	-	98,200	13.00	13.97	23.79









ABOUT: The Regional Economics Applications Laboratory (REAL) is a unit of the Institute of Government and Public Affairs of the University of Illinois. REAL undertakes impact and forecasting analyses of the Illinois and several Midwestern economies and is also engaged in similar analysis in several other countries including Brazil, Chile, Colombia, and Japan. More information can be found at www.illinois.uiuc.edu.