


Illinois Job Index

Release 11/29/2010	Data Jan 1990 / Oct 2010	Issue 2010.11	www.real.illinois.edu
-----------------------	-----------------------------	------------------	-----------------------

For October Illinois Job Index, Illinois, RMW and the nation all have positive job growth. So far this year, Illinois adds job in nine of the past ten months.

The monthly Illinois Job Index and MSA Report are issued monthly as tools for elected officials, policy leaders and the public. The objective is to enhance the understanding of the Illinois economy and business climate by comparing and measuring Illinois employment growth rates against those of the Rest of the Midwest (RMW: Indiana, Iowa, Michigan, Missouri, Ohio and Wisconsin) and the Nation. Data and analysis is provided by the Illinois Economic Observatory / Regional Economics Applications Laboratory, University of Illinois.

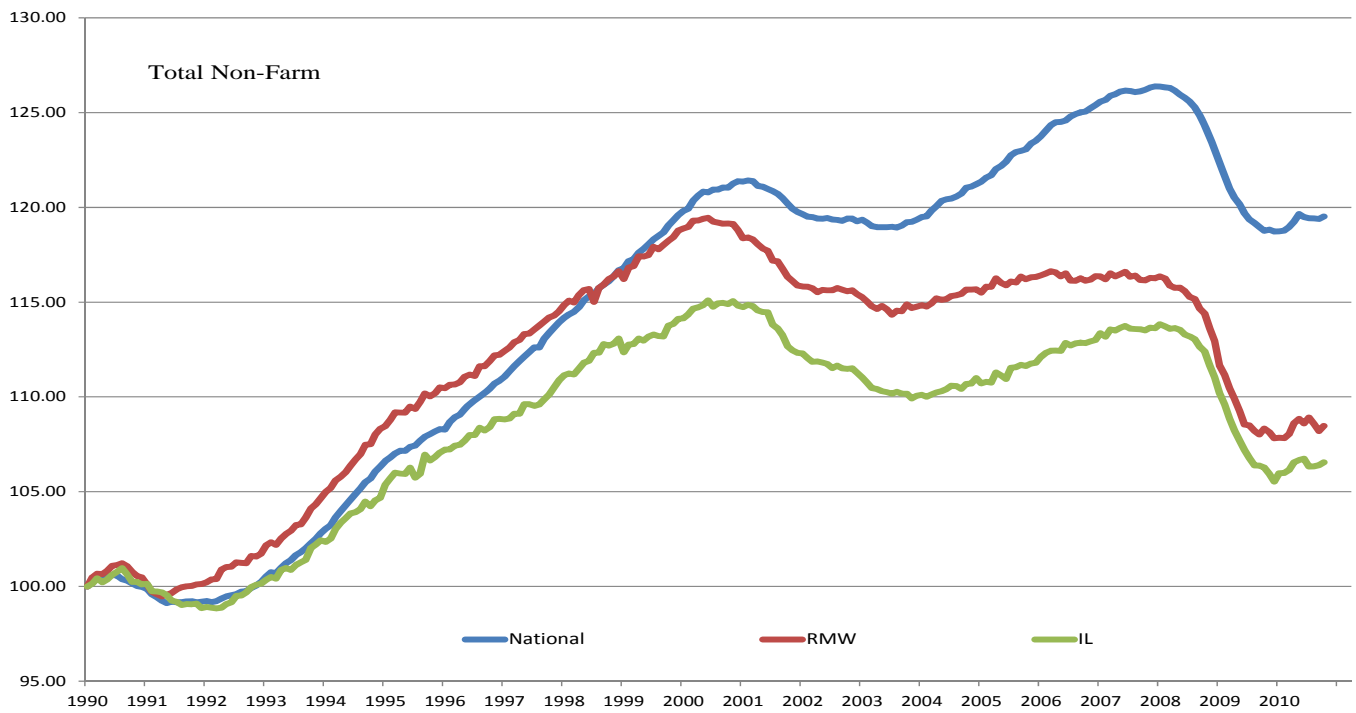
	Nov 2010 Positive		Sep 2010–Oct 2010		Last 12 months		Oct 2010
		Total non-farm employment	Growth Rate %	Number of Jobs	Growth Rate%	Number of Jobs	Shadow U.R. *
		Nation	0.12	151,000	0.64	829,000	12.5%
		RMW	0.26	47,200	0.13	24,100	14.5%
		Illinois	0.14	8,000	0.26	14,400	11.8%

*REAL has estimated a *shadow unemployment rate*; this is calculated as the unemployment rate that would be observed if labor force participation rates matched the average for the 15-year period from 1990 to 2004.

Talking Points

Illinois Notes	<ul style="list-style-type: none"> ▪ Illinois added 8,000 jobs in October 2010 at a rate of 0.14%, compared with a revised 3,600 job gain in September. Compared to October 2009, Illinois added 14,400 jobs, the second consecutive monthly year-over-year increase since April 2008. The three-month moving average of jobs, a more stable measure of labor market, was down by 4,000 jobs per month. The manufacturing sector lost jobs this month after seven consecutive monthly gains this year. ▪ In Oct 2010, the Nation added 151,000 jobs at a rate of 0.12%, compared with a revised 41,000 job loss in September. The three-month moving average of jobs was up by 36,000 jobs per month. ▪ RMW added 47,200 jobs in Oct after a revised 64,900 job loss in September. The three-month moving average was down by 24,900 jobs per month. ▪ Since the beginning of the recession in Dec 2007, Illinois has posted negative job changes 24 times and positive job gains nine times so far. The state of Illinois now has a net loss of 374,100 jobs since the beginning of the recession in December 2007. ▪ Five sectors in Illinois have employment levels in this month that are lower than January 1990 – Construction, Manufacturing, Trade, transportation & utilities, Information and Financial activities. ▪ Over the last 12 months, Illinois added 14,400 jobs at a rate 0.26%. This is the second year-over-year gain in 29 months since April, 2008. ▪ The shadow unemployment rates for Illinois, RMW and the Nation were 12.5%, 14.5% and 11.8%, compared to official unemployment rates of 9.8%, 10.0% and 9.6%. ▪ Through Oct 2010, the cumulative job growth for Illinois, RMW and the Nation compared to January 1990 stood at 6.42%, 8.21%, and 17.88%, respectively.
Nation Notes	<ul style="list-style-type: none"> ▪ In October, the Nation had the first job gain after several consecutive monthly job losses since June, 2010. ▪ Since the last employment peak in December 2007, the nation has lost 7,489,000 jobs. However, for RMW and Illinois, they have not yet recovered from their respective peaks in 2000. ▪ The nation has average growth rates for 2007, 2008, 2009 and first 9 month of 2010 were 0.07%, -0.22%, -0.30% and 0.07%, respectively.

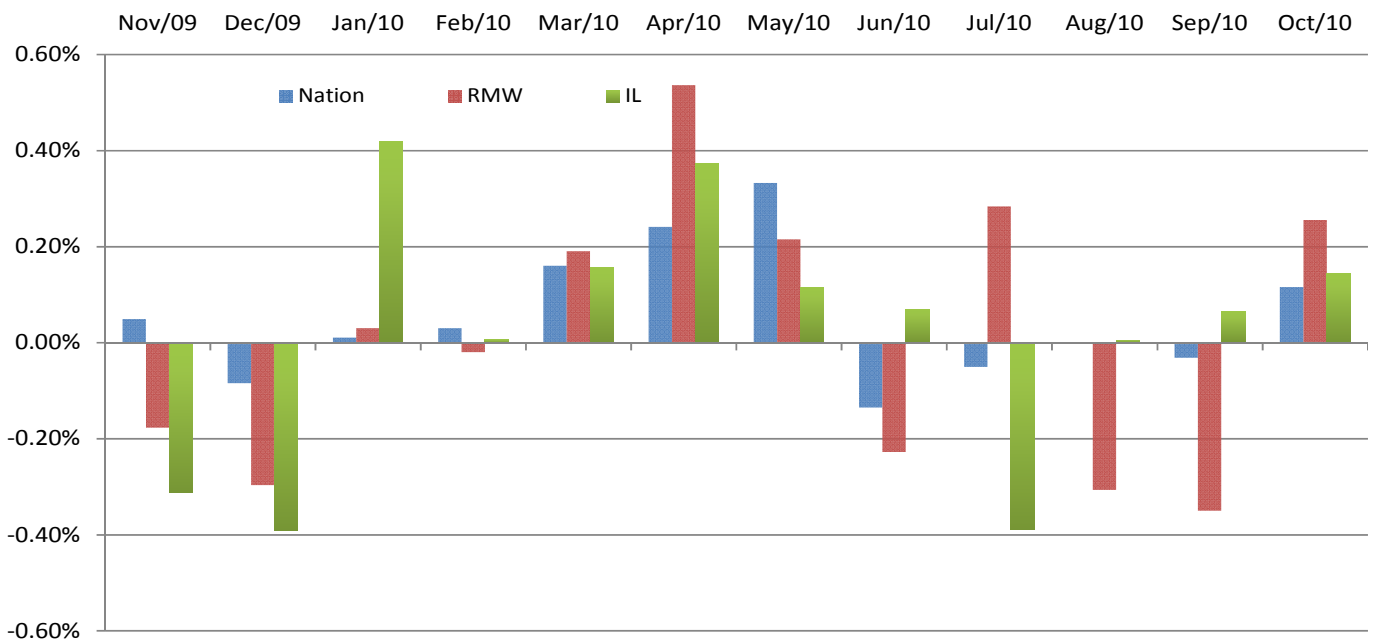
Total Non-farm Employment growth rate Jan 1990 - Oct 2010



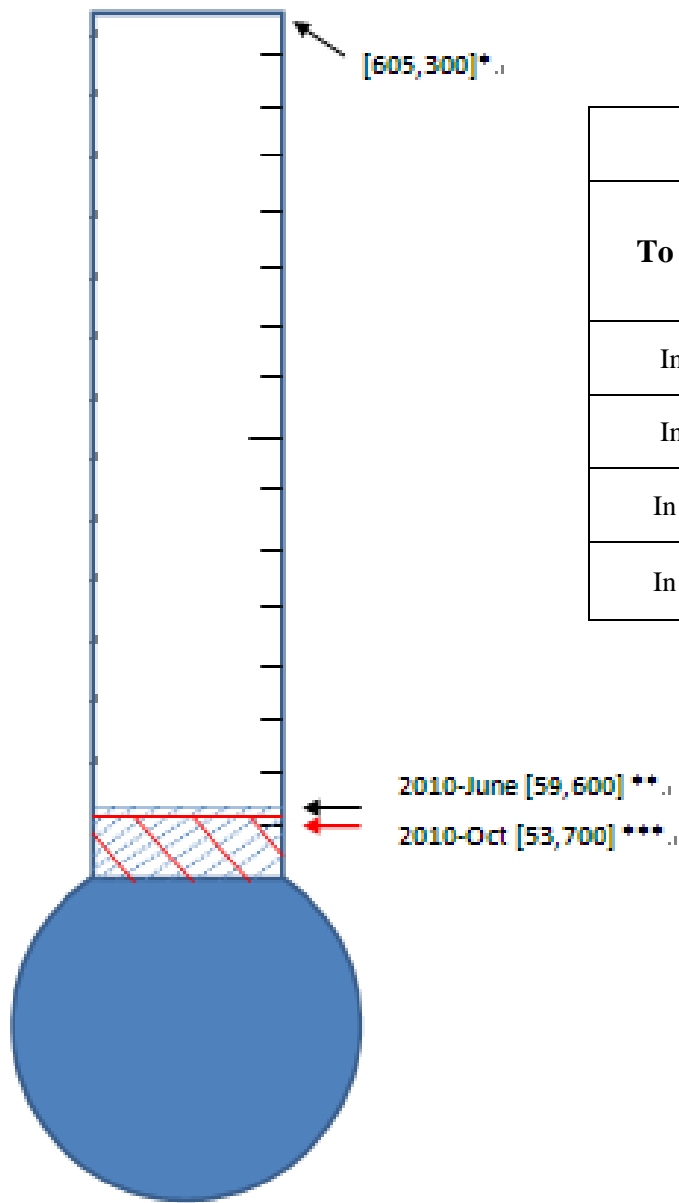
Total Non-farm Employment and Employment Index

	Oct 2010 Number of Jobs	Current Index to Jan 1990	Previous Peak Index to Jan 1990	Changes in Jobs since Jan 1990	Changes in Jobs since Pervious Peak
Nation	130,462,000	119.52	126.57 (Dec-2007)	21,311,000	-7,489,000
RMW	18,533,700	108.47	119.44 (Jun-2000)	1,447,300	-1,875,800
Illinois	5,611,900	106.55	115.08 (Nov-2000)	345,100	-447,600

Last 12 months Total Non-farm Employment Growth Rate Oct 2009 - Oct 2010



Barometer of Job Recovery



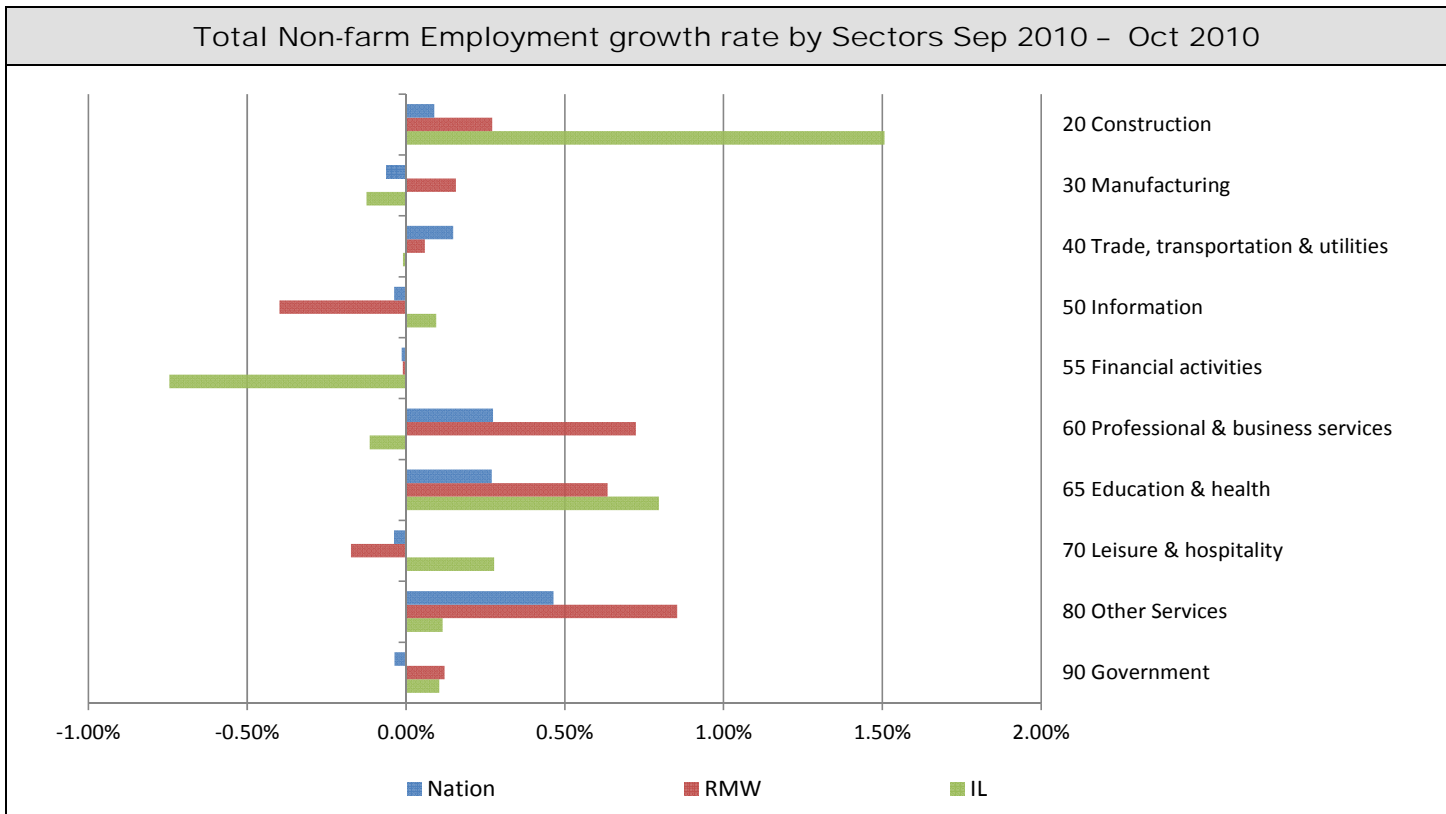
Illinois Recovery Scenarios		
To Recover	Growth Rate	
	At the point of 2010-June	At the point of 2010-Oct
In 5 years	109,100 jobs/year	110,300 jobs/year
In 8 years	68,200 jobs/year	68,900 jobs/year
In 10 years	54,600 jobs/year	55,200 jobs/year
In 15 years	36,800 jobs/year	36,800 jobs/year

* The figure 605,300 is the number of jobs we need for Illinois economy to recover to the previous employment peak, 2000-Nov. The gap between the previous peak 2000-Nov and the previous lowest point 2009-Dec is 501,300. Adding 104,000, the number of jobs that we need to bring shadow and official unemployment rates together, the total number of jobs that Illinois needs to create is 605,300.

**The figure 59,600 represents the jobs recovered from Dec. 2009 (previous lowest level) through June 2010.

*** The figure 53,700 represents the jobs recovered from Dec. 2009 through Oct. 2010.

By employment sector:

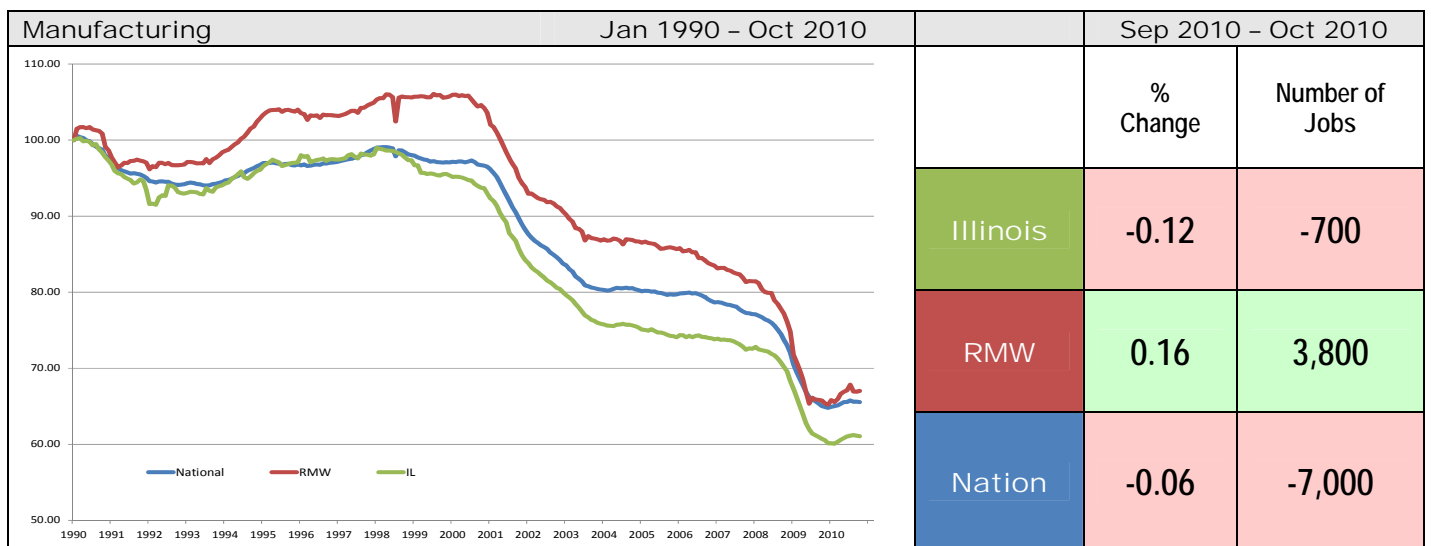
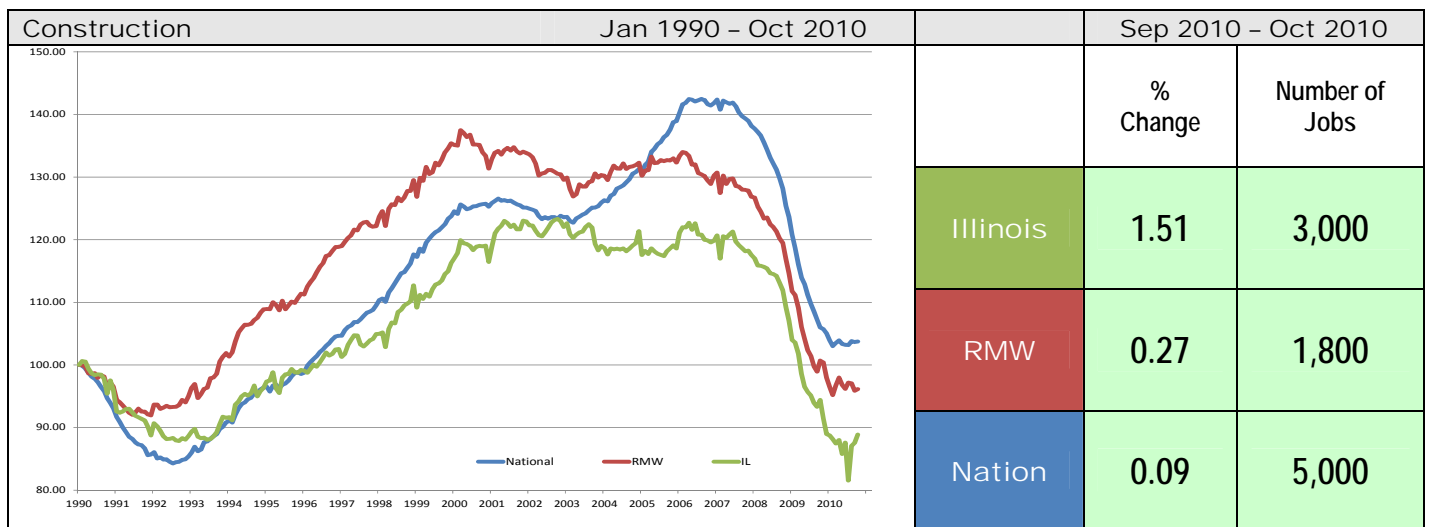


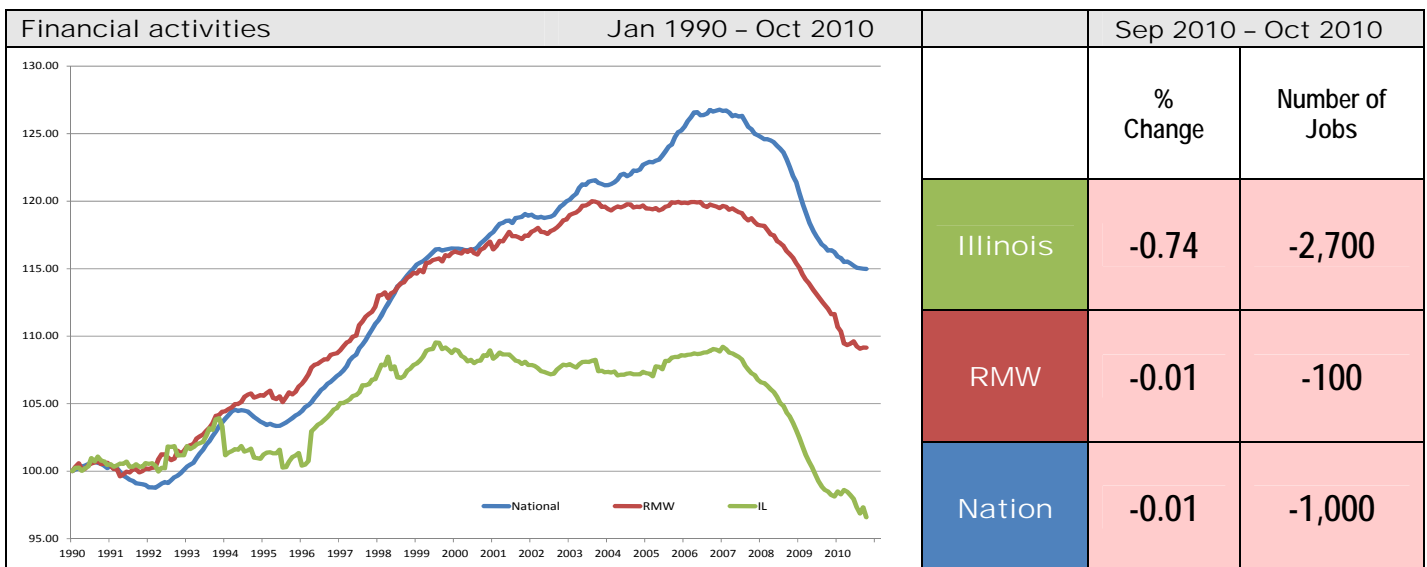
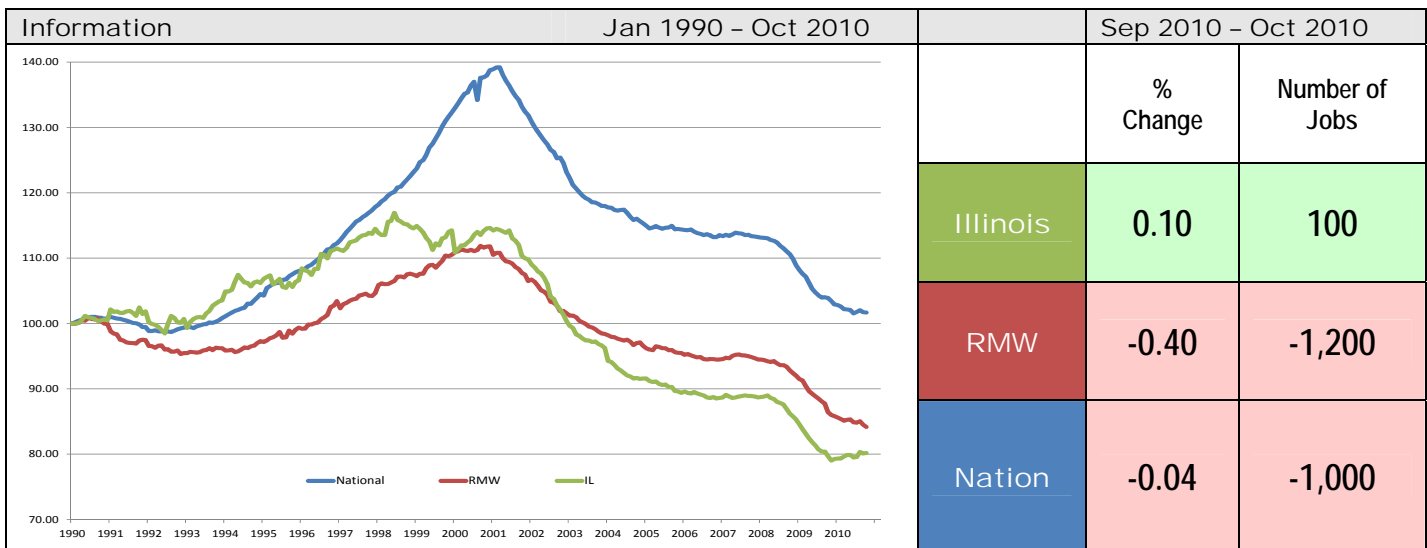
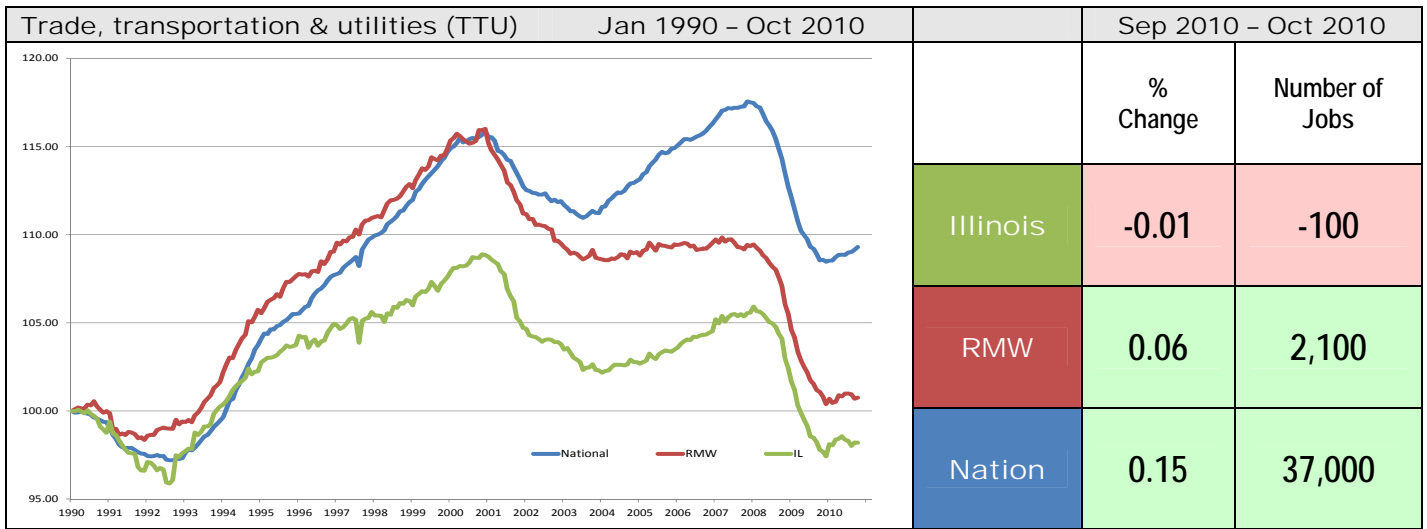
Sector notes

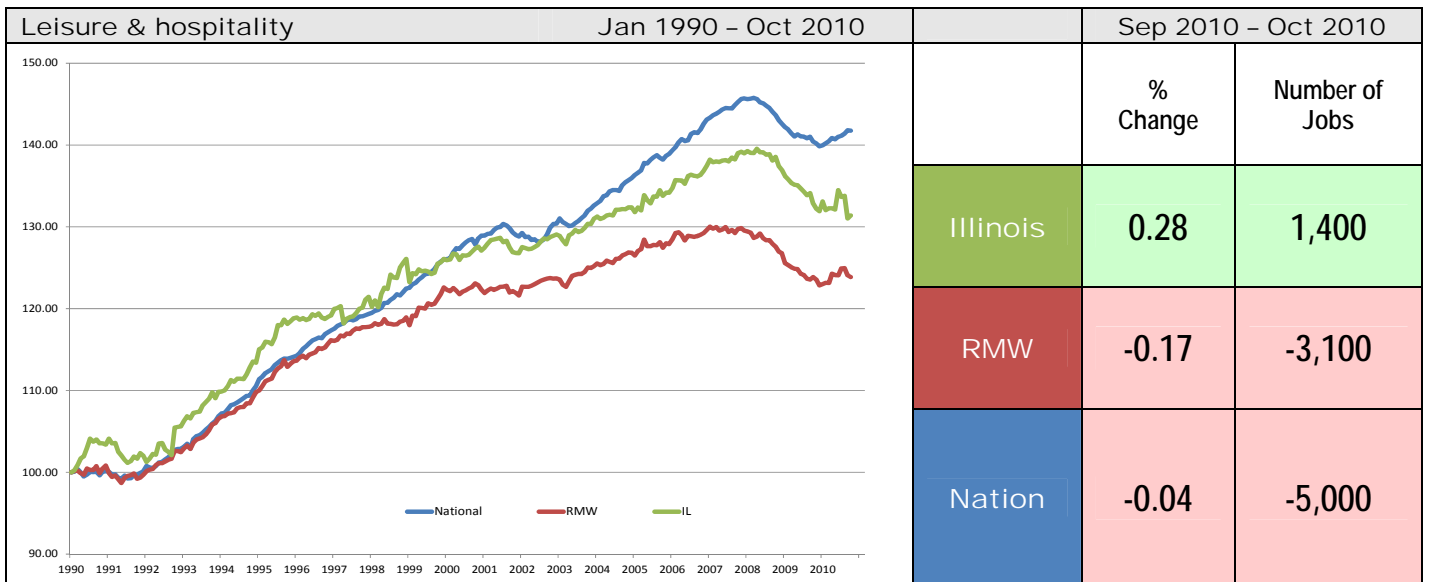
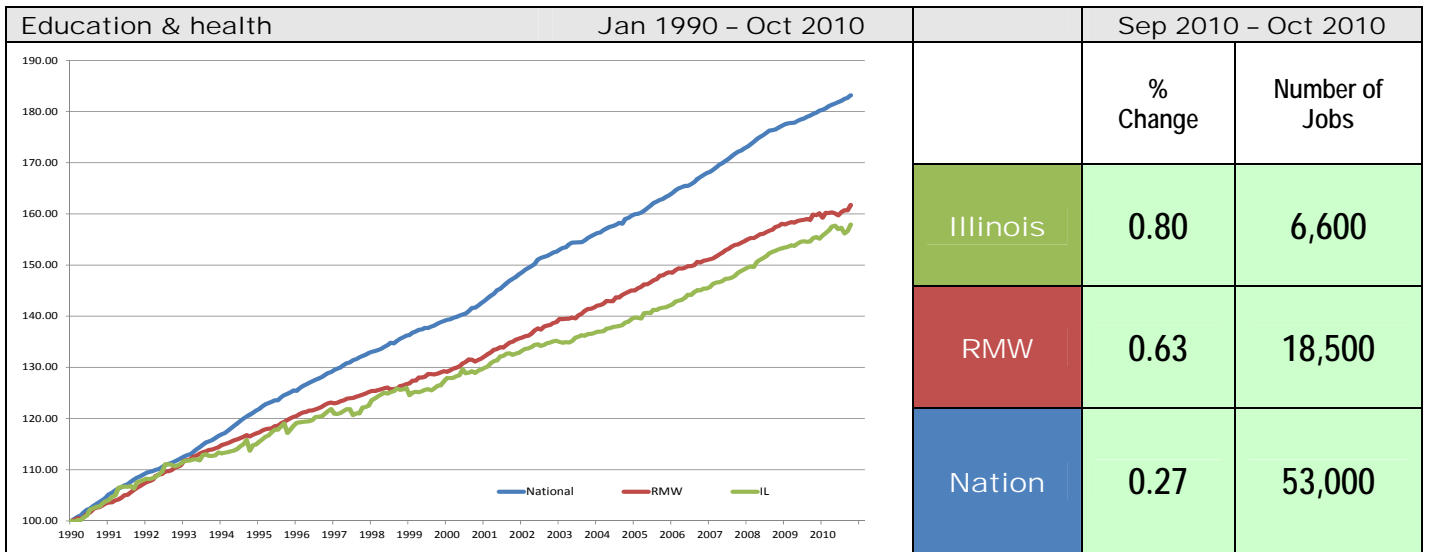
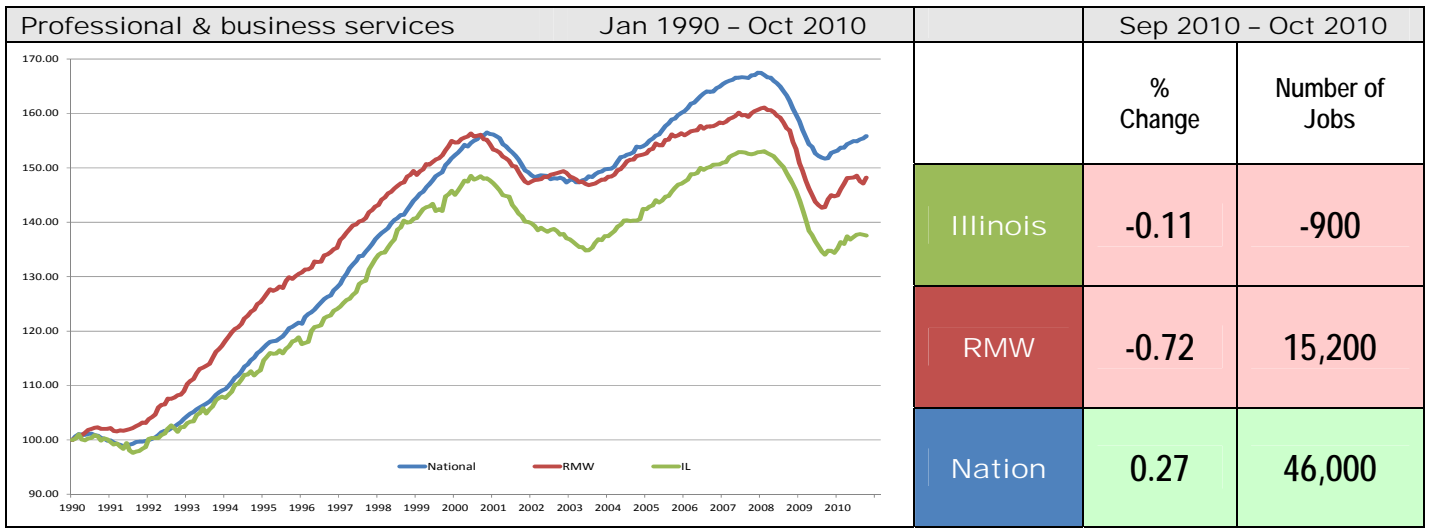
- Illinois posted positive change in Oct 2010 by adding 8,000 jobs. Six out of ten sectors recorded net gains. Compared to September, Construction (0.35% to 1.51%) had major performance gain. Other Services (2.50% to 0.12%) in Illinois experienced major performance loss. In addition, compared to September, Education and health (0.39% to 0.80%), Leisure and hospitality (-2.12% to 0.28%) and Government (-0.06% to 0.11%) had relative performance gains, while Financial activities (0.80% to -0.74%), Trade, transportation & utilities (0.64% to -0.01%) and Manufactory (0.07% to -0.12%) faced relative losses in performance.
- In Oct at the national level, the top three job-gain sectors were:
 - Other Services: 25,000 (0.46%)
 - Education and health: 53,000 (0.27%)
 - Professional & business services: 46,000 (0.27%)
- Major losses at the national level in Aug were recorded by:
 - Manufactory: -7,000 (-0.06%)
 - Government: -8,000 (-0.04%)
 - Leisure and hospitality: -5,000 (-0.04%)
- For Illinois, the top three job-gain sectors in Oct were:
 - Construction: 3,000 (1.51%)
 - Education and health: 6,600 (0.80%)
 - Leisure and hospitality: 1,400 (0.28%)
- Following are the major sectors that lost jobs in Oct for Illinois:
 - Financial activities: -2,700 (-0.74%)
 - Manufactory: -700 (-0.12%)
 - Professional & business services: -900 (-0.11%)
- For Illinois, five sectors have employment below 1990 levels. Compared to 1990 employment levels, Manufacturing has -358,900 fewer jobs, Construction is down -25,300 jobs, Information down -25,900 jobs, Trade transportation & utilities down -20,700 jobs, and Financial activities down -12,700 jobs.

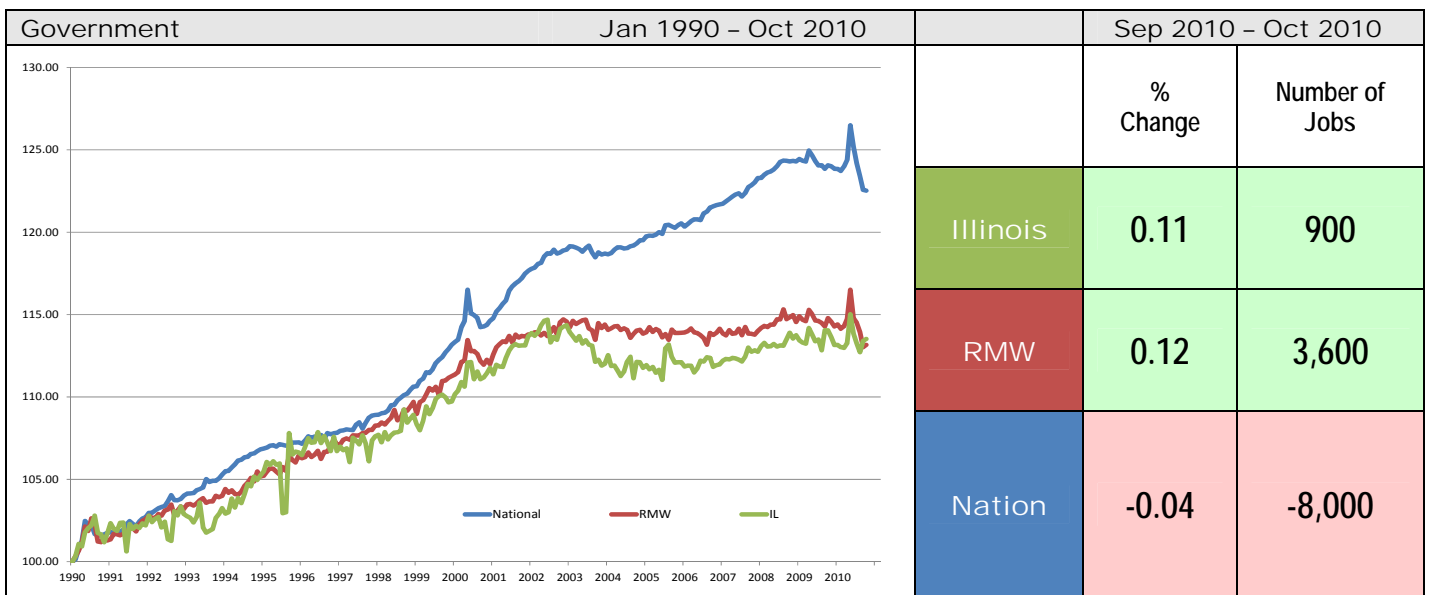
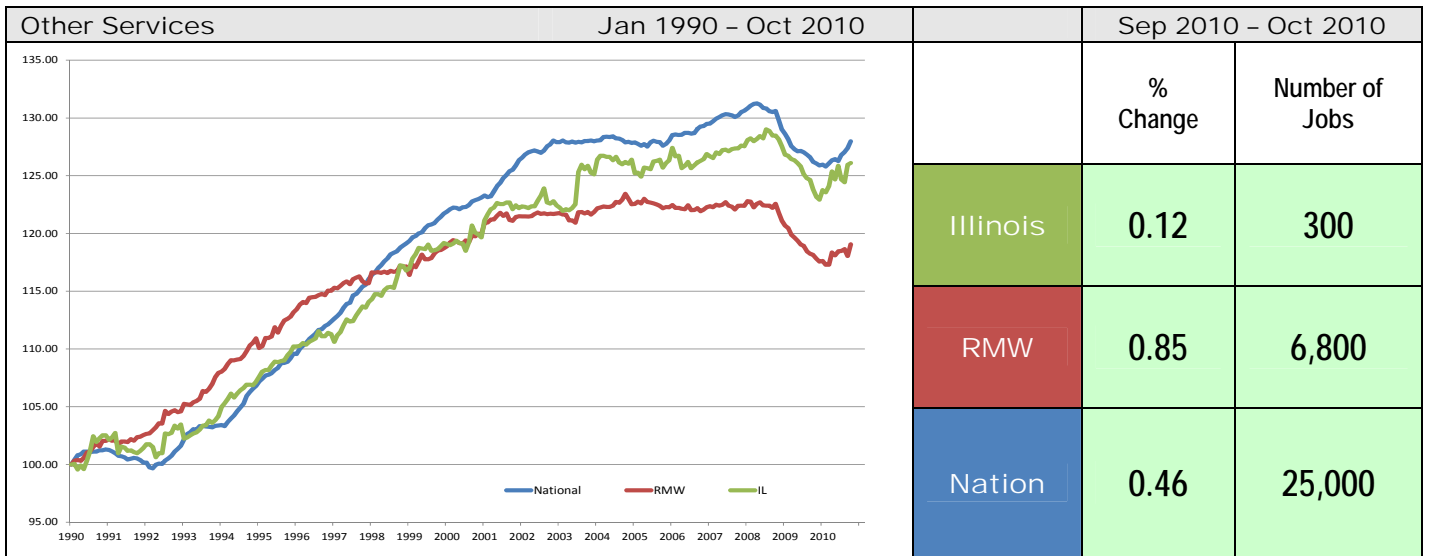
Total Non-farm Employment growth rate by sector Jan 1990 - Oct 2010

	Illinois				RMW	Nation
	vs. RMW	vs. Nation	Number of Jobs	Rate %	Rate %	Rate %
Construction	-	-	-25,300	-11.13	-3.85	3.74
Manufacturing	-	-	-358,900	-38.94	-32.98	125.92
Trade, transportation & utilities (TTU)	-	-	-20,700	-1.80	0.75	9.30
Information	-	-	-25,900	-19.83	-15.84	1.69
Financial activities	-	-	-12,700	-3.41	9.15	14.98
Professional & business services	-	-	214,600	37.55	48.19	55.83
Education & health	-	-	306,400	57.92	61.73	83.18
Leisure & hospitality	+	-	120,600	31.39	23.86	41.75
Other Services	+	-	53,600	26.10	19.06	27.98
Government	-	-	102,100	13.52	13.16	22.53









ABOUT: The Regional Economics Applications Laboratory (REAL) is a unit of the Institute of Government and Public Affairs of the University of Illinois. REAL undertakes impact and forecasting analyses of the Illinois and several Midwestern economies and is also engaged in similar analysis in several other countries including Brazil, Chile, Colombia, and Japan. More information can be found at www.real.illinois.edu.