

# Illinois

## Job Index:

### MSA Report



Illinois Coalition for Jobs, Growth & Prosperity

Release  
10/x/2006

data  
Jan 1990 / Sep 2006

Issue  
10.1

www.jobsillinois.us

As a companion to the September 2006 Illinois Job Index that reports a **Positive Rating**, this MSA Report provides a localized picture on Illinois job growth and allows for comparisons between local economies, Illinois, Nation and Rest of the Midwest.

October 2006	Total non-farm employment	Aug 2006 – Sep 2006		Last 12 months	
		Growth Rate (%)	Number of Jobs	Growth Rate (%)	Number of Jobs
	Illinois non-Metro (Rural)	- 1.22	- 6,600	+2.61	+13,600
	Illinois non-Chicago (Downstate)	- 0.32	- 5,400	+1.12	+18,900
	Illinois Metro	+0.14	+7,500	+1.07	+57,400
	Illinois	+0.02	+900	+1.21	+71,000
	Rest of Midwest (RMW)	+0.04	+7,700	+0.36	+71,500
	Nation	+0.04	+51,000	+1.32	+1,773,000

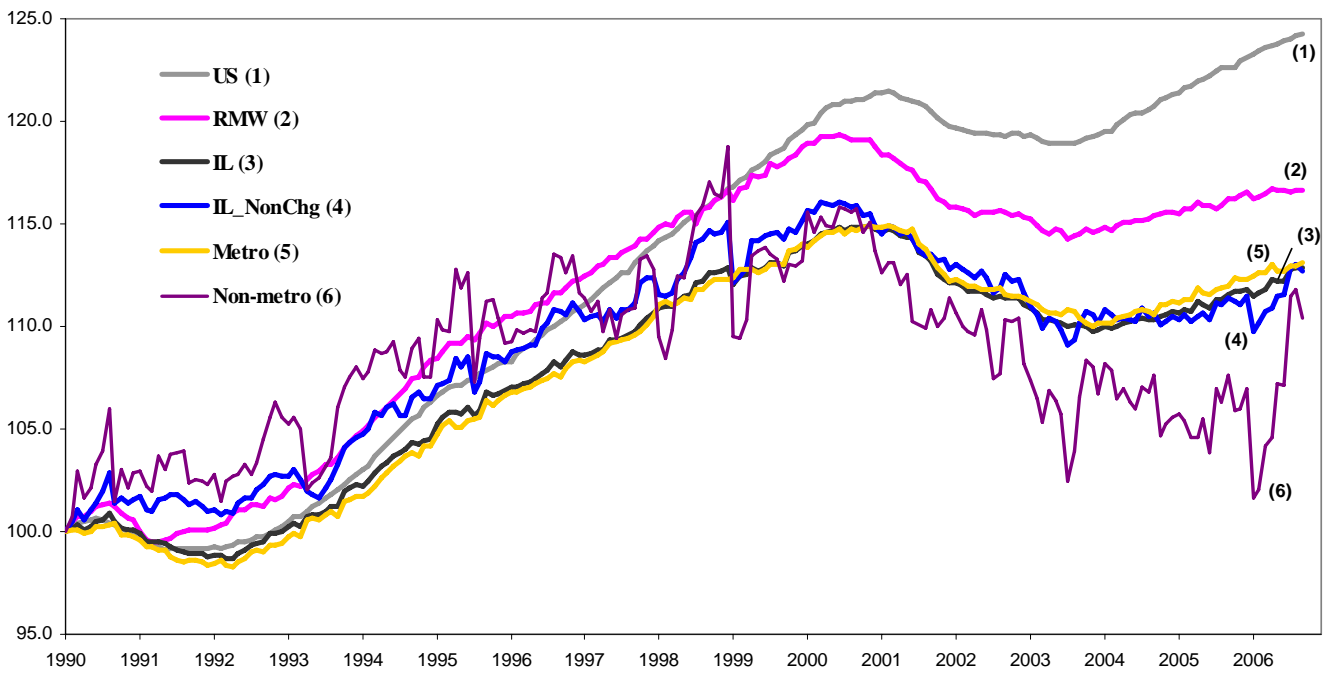
The Illinois Coalition for Jobs, Growth & Prosperity publishes the monthly Illinois Job Index and MSA Report as tools for elected officials, policy leaders and the public. We can better understand the Illinois economy and business climate by comparing and measuring Illinois employment growth rates against those of the Rest of the Midwest (RMW: Indiana, Iowa, Michigan, Missouri, Ohio and Wisconsin) and the Nation. Data and analysis is provided by the Illinois Economic Observatory / Regional Economics Applications Laboratory, University of Illinois. The MSA data (unless noted) were seasonally adjusted to be consistent with state totals.

### Talking Points

- State, Downstate & Metro**
- While Illinois managed to continue to grow jobs for the last three months, the monthly growth rate has declined from 0.53% in July to 0.02% in September.
  - For the last month, the state's monthly job growth rate 0.08% fell much below that of the nation, 0.14% due to the extra 60,000 new jobs added at the national level based on the revised data.
  - For the first time in the last nine months, Downstate recorded net losses, while Chicago succeeded to create more than twice as many as new jobs this month based on revised data, 2,800 jobs in August and 6,300 jobs in September.
  - In terms of the job growth pattern over the 12-month period, both Downstate and Chicago had slower patterns compared to the Nation.
  - Metro in Illinois created 7,500 jobs, more than double the monthly job gain in the previous month based on the revised data.
  - Though non-Metro had the second largest monthly losses of 6,600 jobs in 2006, it still leads the job growth pattern in terms of the gains over the 12-month period with the faster pattern than both the state and Nation.

- MSA page (2-3)**
- All the MSAs except for Rockford and Metro-East successfully created new jobs this month with the faster growing pattern compared to not only the state but also the Nation and RMW.
  - Chicago added 6,300 new jobs at 0.15% of monthly growth rate, which is much faster than the average monthly growth rate, 0.08% for the previous eight months in 2006.
  - In terms of the monthly growth rate, Kankakee was the leader at 0.47% adding 200 jobs, followed by Champaign-Urbana and Springfield both adding 500 new jobs at 0.45% growth rate.
  - Even with the net losses of 100 jobs in September, Rockford still dominated the job growth patterns of MSAs in Illinois with 1.36% growth rate over 12-month period adding 2,100 new jobs over this period.
  - Metro-East experienced monthly fluctuations; for the last 8 months, this MSA had net losses of 200 jobs for this 8-month period.
  - Over the 12-month period, Chicago and Rockford led the job growth among the Metros in Illinois with faster growth pattern than Illinois, 1.36% and 1.24%, respectively.
  - Bloomington-Normal is the only MSA that has suffered job losses over the 12-month period.

Total non-farm Employment growth rate Jan 1990 - Sep 2006



Talking Points

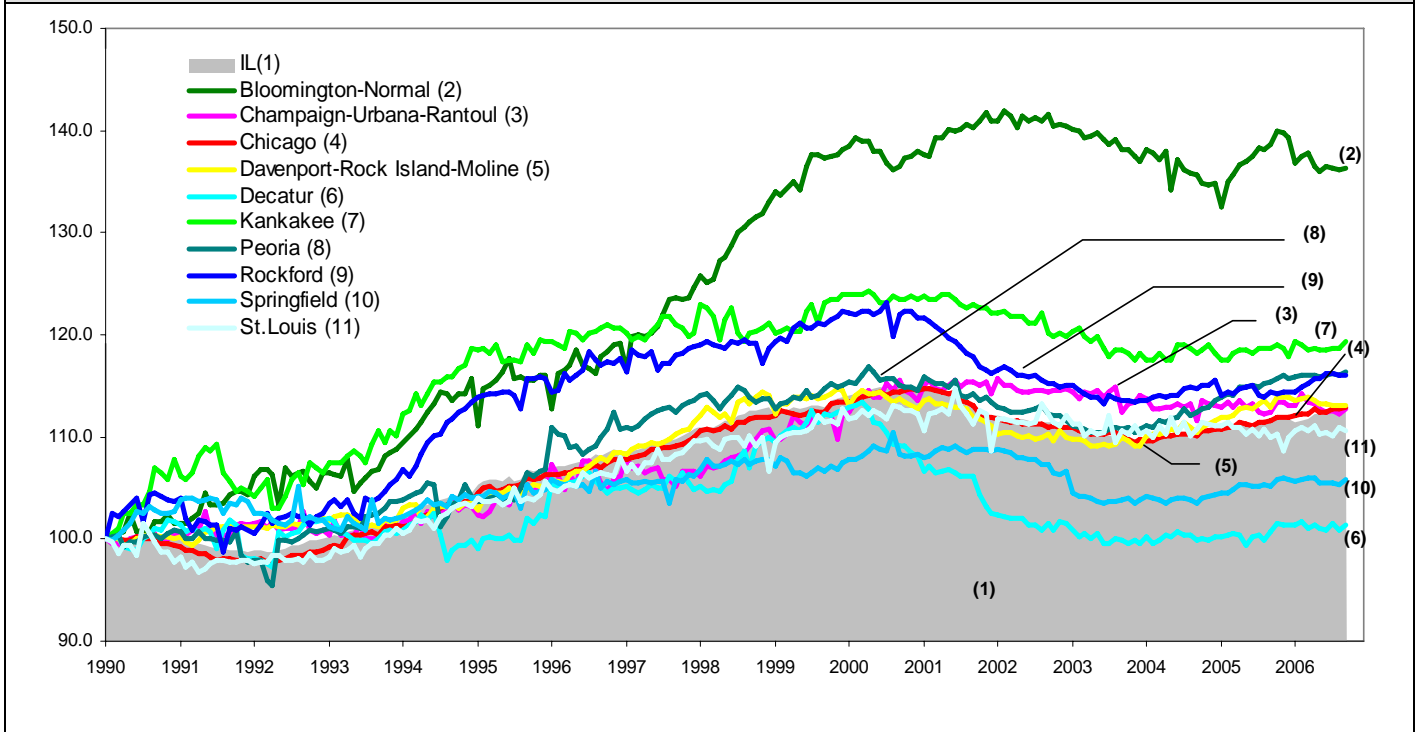
State, Downstate & Metro

- Since the large job gain in July, Illinois had virtually no change in job index; however due to the Nation's faster job growth pattern for the last two months, the gap in the job index between state and Nation has increased slightly.
- Unlike the last two months when Downstate had a higher job index level than Chicago, it had been reversed this month with the positive and higher growth pattern in Chicago combined with net losses in Downstate.
- While job index in non-Metro recorded increases in the previous months, this region ended up with a drop this month, while Metro has shown steady growth for the last 5 months since May 2006.

By MSA

Total non-farm employment Seasonally adjusted unless noted*	Aug 2006 - Sep 2006			Last 12 months	
	Change compared to Illinois	Growth Rate %	Number of Jobs	Growth Rate %	Number of Jobs
Bloomington-Normal (B-N)	+	0.11	100	- 1.66	- 1,500
Champaign-Urbana (C-U-R)	+	0.45	500	0.27	300
Chicago	+	0.15	6,300	1.24	52,100
Davenport-Rock Island-Moline (D-R-M)	+	0.05	100	0.16	300
Decatur	+	0.37	200	0.55	300
Kankakee	+	0.47	200	0.47	200
Peoria	+	0.28	500	0.95	1,700
Rockford	-	- 0.06	- 100	1.36	2,100
Springfield	+	0.45	500	0.63	700
Metro-East*	-	- 0.33	- 800	0.50	1,200
<b>Illinois</b>		<b>0.02</b>	<b>900</b>	<b>1.21</b>	<b>71,000</b>

Total non-farm Employment growth rate Jan 1990 – Sep 2006



Shaded area on above chart represents Illinois growth.

**MSA DESCRIPTION:** **Bloomington-Normal (B-N):** McLean Co. **Champaign-Urbana (C-U-R):** Champaign Co., Ford Co. & Piatt Co. **Chicago:** Cook Co. IL, DeKalb Co. IL, DuPage Co. IL, Grundy Co. IL, Kane Co. IL, Kendall Co. IL, Lake Co. IL, McHenry Co. IL, Will Co. IL & Kenosha Co. WI **Davenport-Moline-Rock Island (D-R-M):** Henry Co. IL, Mercer Co. IL, Rock Island Co. IL & Scott Co. IA **Decatur:** Macon Co. **Kankakee:** Kankakee Co. **Metro-East:** Bond Co., Calhoun Co., Clinton Co., Jersey Co., Macoupin Co., Madison Co., Monroe Co. & St. Clair Co. **Peoria-Pekin (Peoria):** Marshall Co., Peoria Co., Stark Co., Tazewell Co. & Woodford Co. **Rockford:** Boone Co. & Winnebago Co. **Springfield:** Menard Co. & Sangamon Co.

**ABOUT:** The Illinois Coalition for Jobs, Growth & Prosperity is a not-for-profit 501-c4 organization. Coalition founding members include the Chicagoland Chamber of Commerce, the Illinois Business Roundtable, the Illinois Civil Justice League, the Illinois Manufacturers' Association, and the Illinois State Chamber of Commerce. Established to provide Illinois voters with information about government-related issues that have a direct effect on jobs, the Coalition represents firms employing more than a million Illinois workers.

**NOTE:** In comparing Illinois to the Rest of the Midwest (RMW: Indiana, Iowa, Michigan, Missouri, Ohio and Wisconsin) and the Nation, we take the distribution of employment by sector as observed by the Bureau of Labor Statistics and then apply the RMW or Nation growth rates to calculate the expected employment levels. Comparing these with the observed levels in 2004 provides an indication of Illinois' comparative economic performance.

The MSA data (unless noted) were seasonally adjusted to be consistent with state totals.