

Illinois Job Index: MSA Report



Illinois Coalition for Jobs, Growth & Prosperity

Release
9/02/2007

data
Jan 1990 / Jul 2007

Issue
10.8

www.jobsillinois.us

As a companion to the August 2007 Illinois Job Index that reports a **Negative** Rating, this MSA Report provides a localized picture on Illinois job growth and allows for comparisons between local economies, Illinois, Nation and Rest of the Midwest.

August 2007	Total non-farm employment	Jun 2007 – Jul 2007		Last 12 months	
		Growth Rate (%)	Number of Jobs	Growth Rate (%)	Number of Jobs
	Illinois non-Metro (Rural)	- 2.59	- 13,800	- 0.61	- 3,200
	Illinois non-Chicago (Downstate)	- 0.78	- 13,400	+0.29	+5,000
	Illinois Metro	+0.04	+2,300	+1.06	+57,500
	Illinois	- 0.19	- 11,500	+0.92	+54,300
	Rest of Midwest (RMW)	- 0.12	- 23,800	+0.09	+17,000
	Nation	+0.07	+92,000	+1.37	+1,870,000

The Illinois Coalition for Jobs, Growth & Prosperity publishes the monthly Illinois Job Index and MSA Report as tools for elected officials, policy leaders and the public. We can better understand the Illinois economy and business climate by comparing and measuring Illinois employment growth rates against those of the Rest of the Midwest (RMW: Indiana, Iowa, Michigan, Missouri, Ohio and Wisconsin) and the Nation. Data and analysis is provided by the Illinois Economic Observatory / Regional Economics Applications Laboratory, University of Illinois. The MSA data (unless noted) were seasonally adjusted to be consistent with state totals.

Talking Points

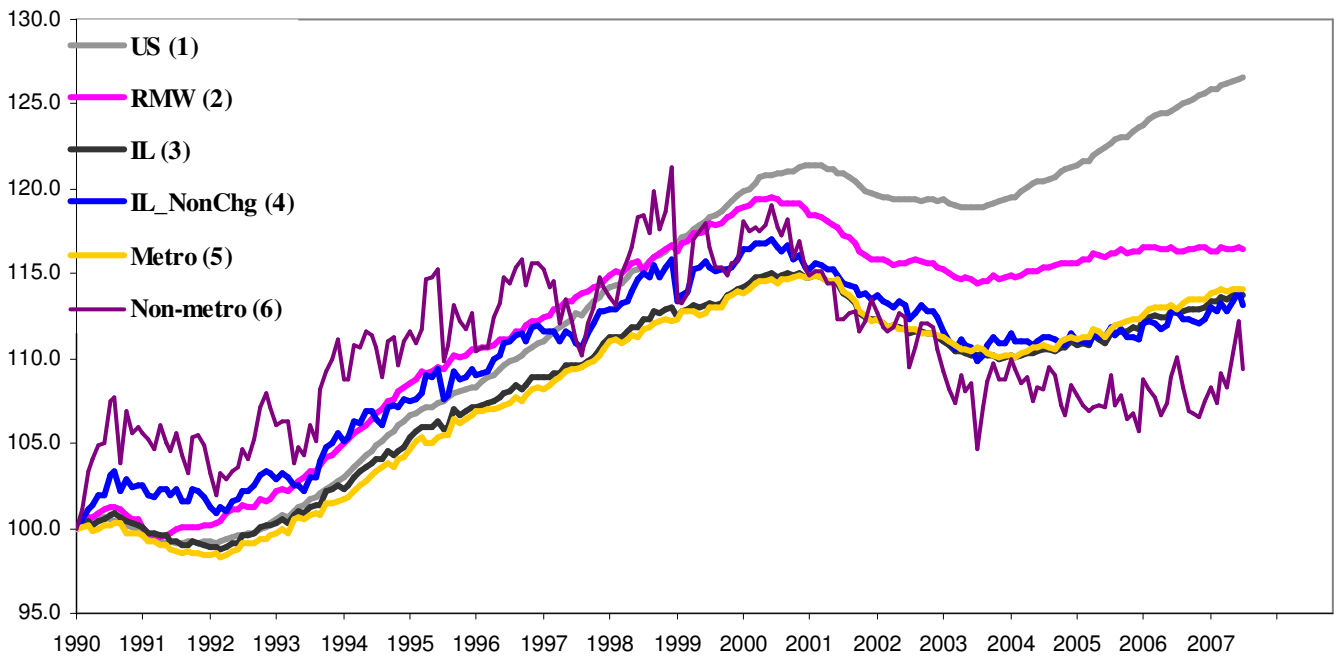
State, Downstate & Metro

- By losing 11,500 jobs at -0.19% in July Illinois recorded a negative rating for the second time in 2007. For Illinois, this is the largest number of jobs lost in any month after July 2005.
- While Illinois as a whole faced a loss of performance, the Metro areas and the various counterparts of Illinois like Chicago versus Downstate or Metro versus Non-metro registered mixed results.
- Downstate lost 13,400 jobs at - 0.78% in July which is the highest number of jobs lost by Downstate after July 2003. Chicago, on the other hand, continued a positive trend by adding 1,900 new jobs at 0.04% in July down from a 0.07% growth in June.
- Illinois Metro recorded a 0.04% growth by adding 2,300 jobs during July down from 2,500 jobs during June. Non-metro to the contrary lost 13,800 jobs at -2.59% which is the lowest monthly growth rate for non-metro since August 2003.
- Over the last 12-months, however, Illinois registered a 0.92% growth by adding 54,300 jobs.
- Through July, Metro grew by 1.06% by adding 57,500 jobs over the last 12-months whereas Non-metro lost 3,200 jobs at -0.61% in the same period. By adding 49,300 jobs at 1.16%, Chicago registered its highest job gain over a 12-month period since November 2006.

MSA page (2-4)

- Illinois Metro had a 0.04% overall growth in July. However, five MSAs recorded net gains, three net losses and the remaining two showed no change. 1,900 jobs were added by Chicago at 0.04% followed by Peoria which added 500 jobs at 0.27%. Rockford and Champaign-Urbana-Rantoul each added 200 jobs at 0.13% and 0.18% respectively.
- Compared to June, Champaign-Urbana-Rantoul recorded the highest 0.18% growth up from a -1.25% loss. Kankakee improved to no growth up from a -0.68% loss. Bloomington-Normal showed the highest loss of performance while growing at 0.11% down from 0.22% growth in June.
- Among the MSAs, Davenport-Rock Island-Moline lost the most jobs, 300 (-0.16%), followed by Metro-East which lost 200 jobs at -0.08%.
- Metro-East registered the fastest growth, 2.06%, over last 12 months by adding 4,900 Jobs. Chicago with a 1.16% growth rate was in the second position. Chicago, however, remained the biggest contributor among the MSAs, by adding 49,300 jobs followed by Metro-East which added 4,900 jobs in that period. Davenport –Rock Island-Moline and Champaign-Urbana-Rantoul registered net losses.

Total non-farm Employment growth rate Jan 1990 – Jul 2007



Talking Points

**State,
Downstate &
Metro**

- For Illinois, through July the 2007, average monthly growth rate is exact match with 2006 average of 0.09%.
- The average growth rate for Metro in 2007, 0.08%, is close to the 2006 average of 0.09%. Non-metro, has a better performance in 2007 (0.25% average) compared to 2006 (0.15% average).
- Compared to RMW, Illinois continues to do better in terms of yearly aggregated trend both in 2006 and 2007.
- As regards the trend for Downstate, the average growth in 2007 of 0.10% until July is close to the average in 2006 of 0.09%.

By MSA

Total non-farm employment Seasonally adjusted unless noted*	Jun 2007 – Jul 2007			Last 12 months	
	Change compared to Illinois	Growth Rate %	Number Of Jobs	Growth Rate %	Number of Jobs
Bloomington-Normal (B-N)	+	0.11	100	0.78	700
Champaign-Urbana (C-U-R)	+	0.18	200	- 0.18	- 200
Chicago	+	0.04	1,900	1.16	49,300
Davenport-Rock Island-Moline (D-R-M)	+	- 0.16	- 300	- 0.37	- 700
Decatur	+	- 0.18	- 100	0	0
Kankakee	+	0	0	0	0
Peoria	+	0.27	500	0.98	1,800
Rockford	+	0.13	200	1.02	1,600
Springfield	+	0	0	0.09	100
Metro-East*	+	- 0.18	- 200	2.06	4,900
Illinois		- 0.19	- 11,500	0.92	54,300

MSA League Tables*: Non-farm Employment Growth Rate

Monthly growth:

Rank	June 2007	July 2007	Rank
1	Metro-East (0.70%)	Peoria (0.27%)	1
2	Bloomington -Normal (0.22%)	Champaign-Urbana-Rantoul (0.18%)	2
3	Chicago (0.07%)	Rockford (0.13%)	3
4	Rockford (0%)	Bloomington -Normal (0.11%)	4
5	Peoria (-0.11%)	Chicago (0.04%)	5
6	Davenport -Rock Island-Moline (-0.11%)	Kankakee (0%)	6
7	Decatur (-0.18%)	Springfield (0%)	7
8	Springfield (-0.27%)	Metro-East (-0.08%)	8
9	Kankakee (-0.68%)	Davenport -Rock Island-Moline (-0.16%)	9
10	Champaign-Urbana-Rantoul (-1.25%)	Decatur (-0.18%)	10

Growth over last 12-months:

Rank	June 2007	July 2007	Rank
1	Metro-East (1.93%)	Metro-East (2.06%)	1
2	Chicago (0.91%)	Chicago (1.16%)	2
3	Champaign-Urbana-Rantoul (-0.54%)	Rockford (1.02%)	3
4	Rockford (0.67%)	Peoria (0.98%)	4
5	Peoria (0.49%)	Bloomington -Normal (0.78%)	5
6	Bloomington -Normal (0.22%)	Springfield (0.09%)	6
7	Decatur (0.18%)	Kankakee (0%)	7
8	Davenport -Rock Island-Moline (-0.27%)	Decatur (0%)	8
9	Kankakee (-0.23%)	Champaign-Urbana-Rantoul (-0.18%)	9
10	Springfield (-0.36%)	Davenport -Rock Island-Moline (-0.37%)	10

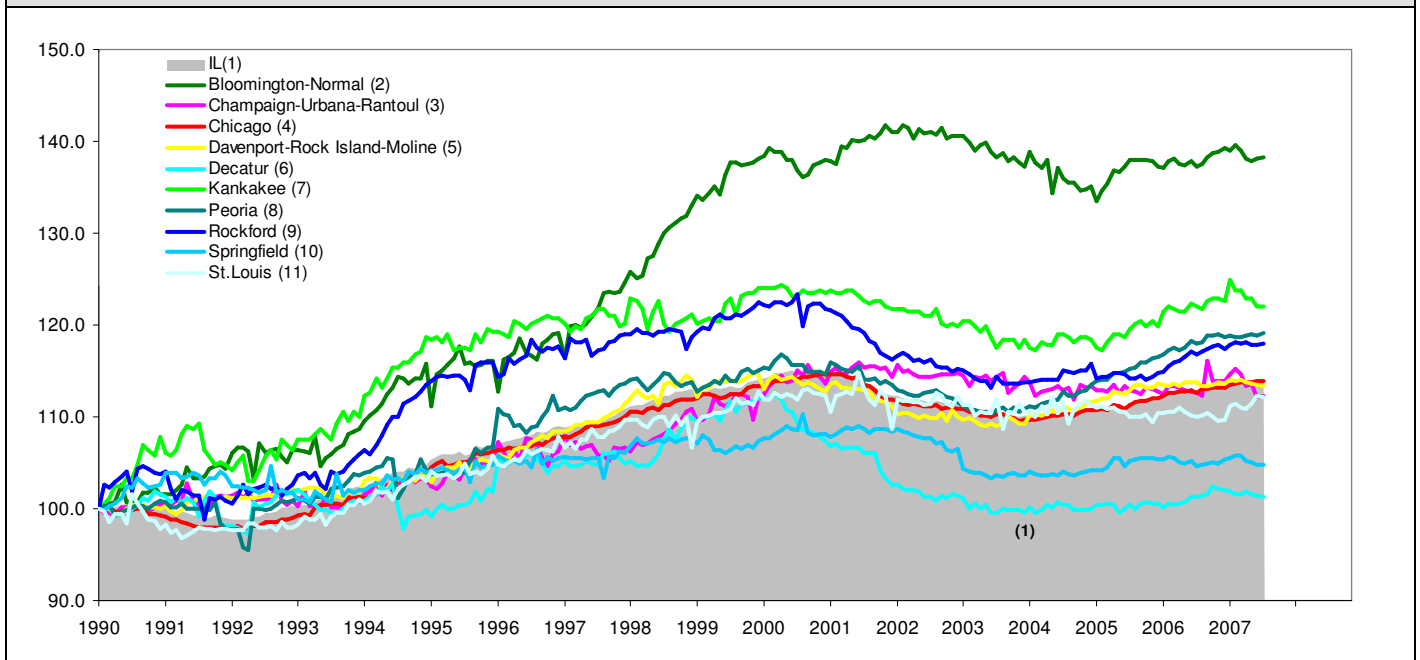
Talking Points

MSA League Tables

- Metro-East, the top performer in June slipped down to the 8th position.
- Bloomington-Normal and Chicago which were in the 2nd and 3rd position slipped to 4th and 5th position respectively. Davenport-Rock Island Moline and Decatur, similarly, dropped from 6th and 7th position to 9th and 10th position respectively.
- Champaign-Urbana-Rantoul made the biggest jump in July while moving from 10th position to 2nd position.
- Peoria jumped up to the 1st position in July from the 5th position in June. Rockford (4th), Springfield (8th) and Kankakee (9th) jumped up to 3rd, 7th and 6th position respectively.
- In the league table for the last 12 months growth, Metro-East and Chicago the top two performers in June retained their positions.
- While Springfield made the greatest leap in the rankings (10th to 6th) Champaign-Urbana-Rantoul (3rd to 9th) faced the deepest fall.
- Decatur (7th to 8th) and Davenport-Rock Island-Moline (8th to 10th) also lost ground.
- Rockford (4th to 3rd), Peoria (5th to 4th), Bloomington-Normal (6th to 5th), Kankakee (9th to 7th) and Springfield (10th to 6th) all gained.

*MSA League Tables are based on revised employment data. For instances of equal growth rate for multiple MSAs ranks are decided based on change of growth rate from previous month.

Total non-farm Employment growth rate Jan 1990 – Jun 2007



Shaded area on above chart represents Illinois growth.

MSA DESCRIPTION: **Bloomington-Normal (B-N):** McLean Co. **Champaign-Urbana (C-U-R):** Champaign Co., Ford Co. & Piatt Co. **Chicago:** Cook Co. IL, DeKalb Co. IL, DuPage Co. IL, Grundy Co. IL, Kane Co. IL, Kendall Co. IL, Lake Co. IL, McHenry Co. IL, Will Co. IL & Kenosha Co. WI **Davenport-Moline-Rock Island (D-R-M):** Henry Co. IL, Mercer Co. IL, Rock Island Co. IL & Scott Co. IA **Decatur:** Macon Co. **Kankakee:** Kankakee Co. **Metro-East:** Bond Co., Calhoun Co., Clinton Co., Jersey Co., Macoupin Co., Madison Co., Monroe Co. & St. Clair Co. **Peoria-Pekin (Peoria):** Marshall Co., Peoria Co., Stark Co., Tazewell Co. & Woodford Co. **Rockford:** Boone Co. & Winnebago Co. **Springfield:** Menard Co. & Sangamon Co.

The MSA data (unless noted) were seasonally adjusted to be consistent with state totals.

ABOUT: The Illinois Coalition for Jobs, Growth & Prosperity is a not-for-profit 501-c-4 organization. Coalition founding members include the Chicagoland Chamber of Commerce, the Illinois Business Roundtable, the Illinois Civil Justice League, the Illinois Manufacturers' Association, and the Illinois State Chamber of Commerce. Established to provide Illinois voters with information about government-related issues that have a direct effect on jobs, the Coalition represents firms employing more than a million Illinois workers.