

Illinois Job Index: MSA Report



Illinois Coalition for Jobs, Growth & Prosperity

Release 1/06/2008	data Jan 1990 / Nov 2007	Issue 10.12	www.jobsillinois.us
-----------------------------	------------------------------------	-----------------------	----------------------------

As a companion to the December 2007 Illinois Job Index that reports a **Negative** Rating, this MSA Report provides a localized picture on Illinois job growth and allows for comparisons between local economies, Illinois, Nation and Rest of the Midwest.

December 2007	Total non-farm employment	Oct 2007 – Nov 2007		Last 12 months	
		Growth Rate (%)	Number of Jobs	Growth Rate (%)	Number of Jobs
	Illinois non-Metro (Rural)	-0.60	-3,000	-2.30	-11,000
	Illinois non-Chicago (Downstate)	+0.08	+1,300	-0.20	-3,400
	Illinois Metro	+0.10	+5,400	+0.95	+51,600
	Illinois	+0.04	+2,400	+0.67	+39,900
	Rest of Midwest (RMW)	+0.03	+6,200	-0.14	-27,200
	Nation	+0.07	+94,000	+1.11	+1,526,000

The Illinois Coalition for Jobs, Growth & Prosperity publishes the monthly Illinois Job Index and MSA Report as tools for elected officials, policy leaders and the public. We can better understand the Illinois economy and business climate by comparing and measuring Illinois employment growth rates against those of the Rest of the Midwest (RMW: Indiana, Iowa, Michigan, Missouri, Ohio and Wisconsin) and the Nation. Data and analysis is provided by the Illinois Economic Observatory / Regional Economics Applications Laboratory, University of Illinois. The MSA data (unless noted) were seasonally adjusted to be consistent with state totals.

Talking Points

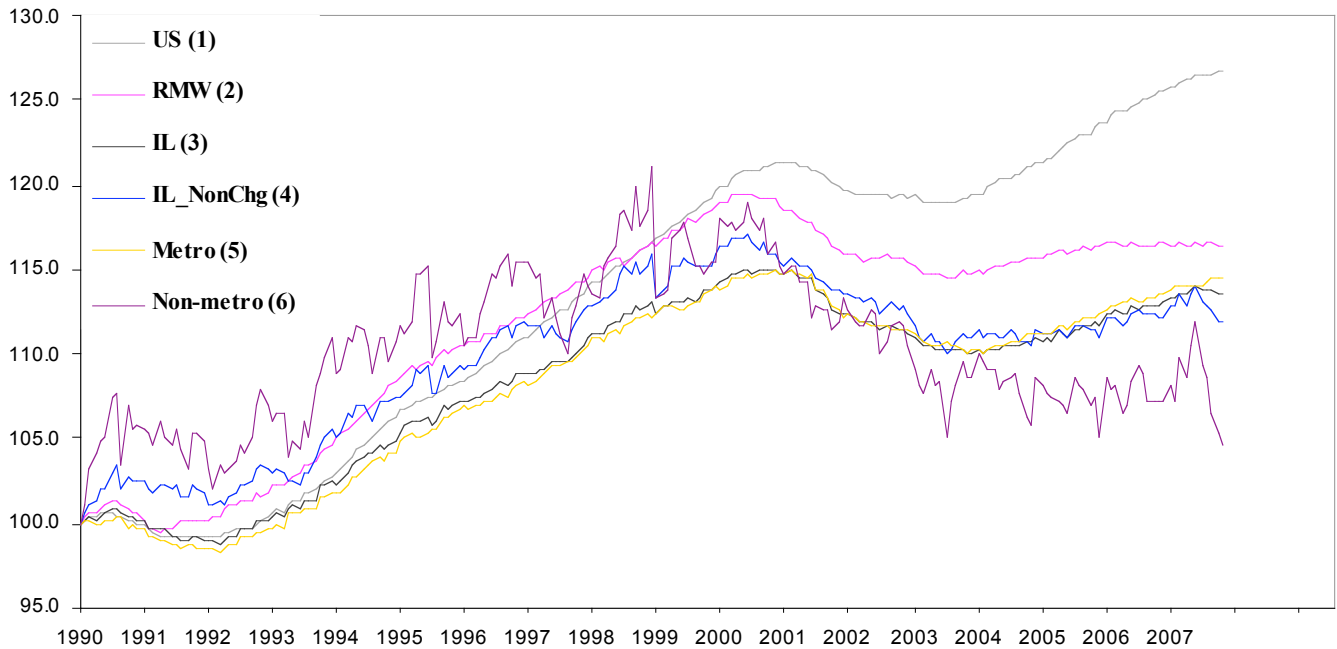
State, Downstate & Metro

- After two consecutive months of negative rating Illinois added 2,400 jobs at 0.04% in November. Illinois has posted a positive rating eight times in 2007 including November.
- Like the overall performance of Illinois which was positive, the major geographic divisions, Chicago, Downstate and Metro, all registered positive ratings while non-metro was an exception. However, the metro areas showed mixed performance.
- Downstate added 1,300 jobs at 0.08% in November reviving from a revised net loss of 10,200 jobs at -0.60% in October. This is the first time after June 2007 that downstate posted a positive rating. Chicago, on the other hand added 1,100 jobs at 0.03%, down from a revised 4,600 gain in October at 0.11%.
- Illinois Metro added 5,400 jobs in November compared to a revised 400 gain in October. Non-metro by contrast lost 3,000 jobs at -2.30% compared to a 6,000 revised loss in October. Non-metro, however, posted seven negative ratings in 2007 including the last five months whereas metro posted positive ratings throughout 2007 except March.
- Over the last 12-months, however, Illinois registered a 0.67% growth rate by adding 39,900 jobs.
- Through November, Metro grew by 0.95% by adding 51,600 jobs over the last 12-months whereas Non-metro lost 11,700 jobs at -1.94% in the same period. Chicago, on the other hand added 43,300 jobs at 1.02% as opposed to -3,400 jobs added by Non-Chicago at -0.20%.

MSA page (2-4)

- Illinois Metro posted a 0.10% growth in November by adding 5,400 jobs in November. All MSAs in Illinois made a positive gain, which happened for the first time since February 2006. Rockford added the highest number, 2,700 jobs, at 1.73% followed by Chicago which added 1,100 jobs at 0.53%.
- Rockford also posted the highest gain in performance with a 1.73% growth in November up from a -1.76% loss in October. Champaign-Urbana-Rantoul followed with a gain of 0.18% up from a -1.49% loss in October. On the other hand, Davenport-Rock Island-Moline showed the deepest fall in performance with a net 0.11% gain in November down from 0.42% gain in October.
- Over last 12 months, Metro-East grew fastest at 1.85%, by adding 4,400 Jobs. Chicago while contributing the highest 43,300 jobs in that period remained the second fastest growing MSA with a 1.02% growth rate. Rockford and Champaign-Urbana-Rantoul registered net losses in that period. Metro-East and Davenport-Rock Island-Moline were the second and third largest contributor to Illinois payroll by adding 4,400 and 1,100 jobs over last 12 months.

Total non-farm Employment growth rate Jan 1990 – Nov 2007



Talking Points

State, Downstate & Metro

- For Illinois, the average monthly growth rate in 2007 until November was 0.05%, which is much lower than the 2006 average of 0.09%.
- The average growth rate for Metro in 2007 through November is the same as the 2006 average of 0.08%. In contrast, resulting from a sustained loss for the last five months, non-metro recorded a -0.20% average loss in 2007 compared to a 0.16% average growth in 2006.
- Unlike the overall trend since January 1990 Illinois did better than the RMW in terms of yearly aggregated trend both in 2006 and 2007.
- As regards the trend for Downstate, in 2007 a -0.02% average decline was recorded through November compared average 0.11% gain in 2006.

By MSA

Total non-farm employment Seasonally adjusted unless noted*	Oct 2007 –Nov 2007			Last 12 months	
	Change compared to Illinois	Growth Rate %	Number Of Jobs	Growth Rate %	Number of Jobs
Bloomington-Normal (B-N)	+	0.11	100	0.66	600
Champaign-Urbana (C-U-R)	+	0.18	200	-0.09	-100
Chicago	-	0.03	1,100	1.02	43,300
Davenport-Rock Island-Moline (D-R-M)	+	0.11	200	0.58	1,100
Decatur	+	0.36	200	0.18	100
Kankakee	+	0.23	100	0.46	200
Peoria	+	0.21	400	0.86	1,600
Rockford	+	1.73	2,700	-0.06	-100
Springfield	+	0.09	100	0.45	500
Metro-East*	+	0.12	300	1.85	4,400
Illinois		0.04	2,400	0.67	39,900

MSA League Tables*: Non-farm Employment Growth Rate

Monthly growth:

Rank	October 2007	November 2007	Rank	Change**
1	Peoria (0.43%)	Rockford (0.73%)	1	↑ (+9)
2	Davenport-Rock Island-Moline (0.42%)	Decatur (0.36%)	2	↑ (+6)
3	Springfield (0.27%)	Kankakee (0.23%)	3	↑ (+4)
4	Bloomington-Normal (0.22%)	Peoria (0.21%)	4	↓ (-3)
5	Chicago (0.11%)	Champaign-Urbana-Rantoul (0.18%)	5	↑ (+4)
6	Kankakee (0.00%)	Metro-East (0.12%)	6	↑ (+2)
7	Decatur (-0.18%)	Bloomington-Normal (0.11%)	7	↓ (-3)
8	Metro-East (-0.70%)	Davenport-Rock Island-Moline (0.11%)	8	↓ (-6)
9	Champaign-Urbana-Rantoul (-1.49%)	Springfield (0.09%)	9	↓ (-6)
10	Rockford (-1.76%)	Chicago (0.03%)	10	↓ (-5)

Growth over last 12-months:

Rank	October 2007	November 2007	Rank	Change**
1	Metro-East (1.34%)	Metro-East (1.85%)	1	← (0)
2	Chicago (1.04%)	Chicago (1.02%)	2	← (0)
3	Peoria (0.76%)	Peoria (0.86%)	3	← (0)
4	Davenport-Rock Island-Moline (0.75%)	Bloomington-Normal (0.66%)	4	↑ (+1)
5	Bloomington-Normal (0.66%)	Davenport-Rock Island-Moline (0.58%)	5	↓ (-1)
6	Springfield (0.27%)	Kankakee (0.46%)	6	↑ (+1)
7	Kankakee (0%)	Springfield (0.45%)	7	↓ (-1)
8	Champaign-Urbana-Rantoul (-0.18%)	Decatur (0.18%)	8	↑ (+1)
9	Decatur (-0.36%)	Rockford (-0.06%)	9	↑ (+1)
10	Rockford (-1.70%)	Champaign-Urbana-Rantoul (-0.09%)	10	↓ (-2)

Talking Points

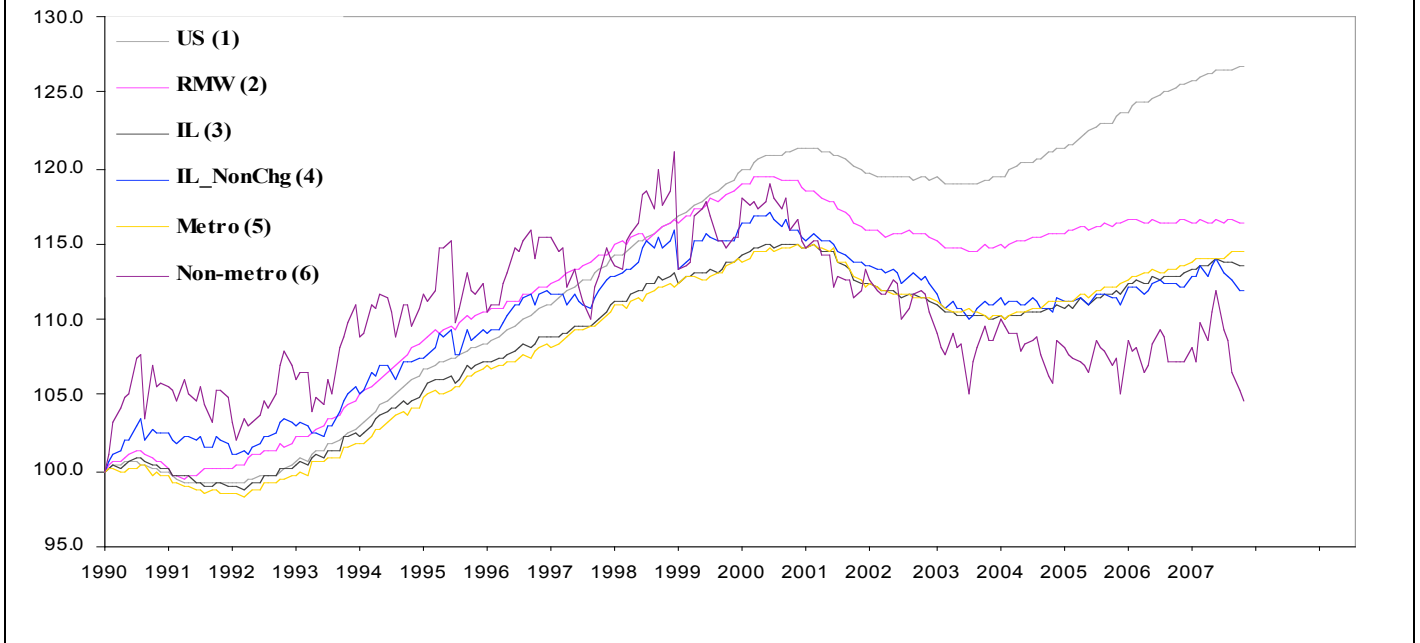
MSA League Tables

- The most remarkable upward move in November is that of Rockford from 10th to 1st position.
- Decatur and Kankakee grabbed the second and third position up from 7th and 6th position respectively.
- Champaign-Urbana-Rantoul and Metro-East also improved from 9th and 8th position to 5th and 6th position respectively.
- The deepest fall in October was experienced by Davenport-Rock Island-Moline and Springfield which slipped down to 8th and 9th position from 1st and 2nd position in November. Chicago fell to the 10th position down from 5th position.
- Among others Bloomington-Normal, and Peoria lost ground in November.
- In the league table for the last 12 months growth, Metro-East, Chicago and Peoria the three best performers in October retained their position.
- Davenport-Rock Island-Moline, Springfield and Champaign-Urbana-Rantoul slipped from 4th, 6th and 8th position to 5th, 7th and 10th position respectively.
- Bloomington-Normal (5th to 4th), Kankakee (7th to 6th), Decatur (9th to 8th) and Rockford (10th to 9th) all had a lift in their position in November in terms of 12-months aggregated growth rate.

*MSA League Tables are based on revised employment data. For instances of equal growth rate for multiple MSAs ranks are decided based on change of growth rate from previous month.

**Changes indicate change in rank position compared to previous month. Rise is indicated by a '↑' and decline by a '↓' and for an unchanged position a '←' is used. Figures in parenthesis indicate relative rank change from previous month.

Total non-farm Employment growth rate Jan 1990 – Nov 2007



Shaded area on above chart represents Illinois growth.

MSA DESCRIPTION: **Bloomington-Normal (B-N):** McLean Co. **Champaign-Urbana (C-U-R):** Champaign Co., Ford Co. & Piatt Co. **Chicago:** Cook Co. IL, DeKalb Co. IL, DuPage Co. IL, Grundy Co. IL, Kane Co. IL, Kendall Co. IL, Lake Co. IL, McHenry Co. IL, Will Co. IL & Kenosha Co. WI **Davenport-Moline-Rock Island (D-R-M):** Henry Co. IL, Mercer Co. IL, Rock Island Co. IL & Scott Co. IA **Decatur:** Macon Co. **Kankakee:** Kankakee Co. **Metro-East:** Bond Co., Calhoun Co., Clinton Co., Jersey Co., Macoupin Co., Madison Co., Monroe Co. & St. Clair Co. **Peoria-Pekin (Peoria):** Marshall Co., Peoria Co., Stark Co., Tazewell Co. & Woodford Co. **Rockford:** Boone Co. & Winnebago Co. **Springfield:** Menard Co. & Sangamon Co.

The MSA data (unless noted) were seasonally adjusted to be consistent with state totals.

ABOUT: The Illinois Coalition for Jobs, Growth & Prosperity is a not-for-profit 501-c-4 organization. Coalition founding members include the Chicagoland Chamber of Commerce, the Illinois Business Roundtable, the Illinois Civil Justice League, the Illinois Manufacturers' Association, and the Illinois State Chamber of Commerce. Established to provide Illinois voters with information about government-related issues that have a direct effect on jobs, the Coalition represents firms employing more than a million Illinois workers.