

Illinois

Job Index:

MSA Report



Illinois Coalition for Jobs, Growth & Prosperity

Release
6/30/2007

data
Jan 1990 / May 2007

Issue
10.6

www.jobsillinois.us

As a companion to the June 2007 Illinois Job Index that reports a **Positive** Rating, this MSA Report provides a localized picture on Illinois job growth and allows for comparisons between local economies, Illinois, Nation and Rest of the Midwest.

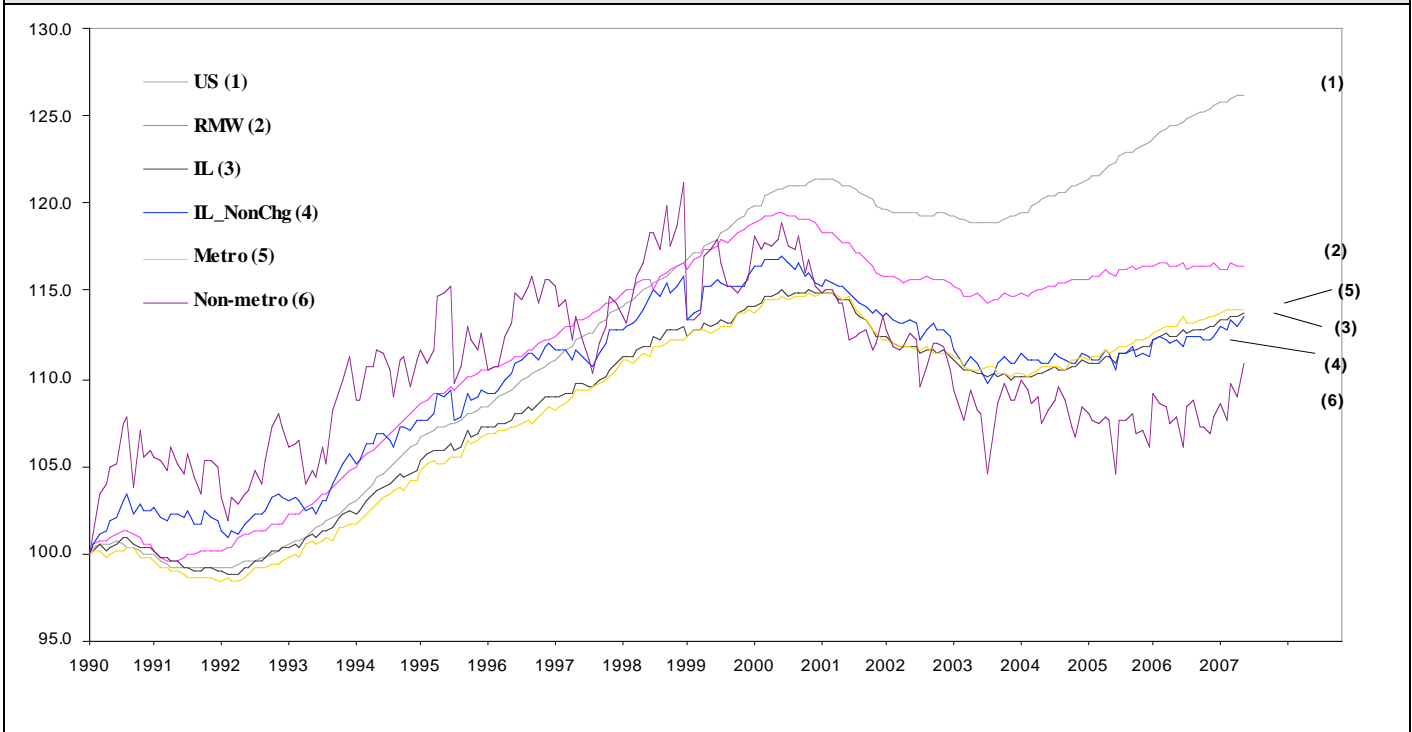
Jun 2007	Total non-farm employment	Apr 2007 –May 2007		Last 12 months	
		Growth Rate (%)	Number of Jobs	Growth Rate (%)	Number of Jobs
	Illinois non-Metro (Rural)	+1.75	+9,000	+2.73	+14,000
	Illinois non-Chicago (Downstate)	+0.58	+9,800	+1.29	+21,900
	Illinois Metro	+0.06	+3,200	+0.96	+51,800
	Illinois	+0.20	+12,200	+1.11	+65,800
	Rest of Midwest (RMW)	-0.08	-16,800	-0.07	-14,800
	Nation	+0.11	+157,000	+1.42	+1,925,000

The Illinois Coalition for Jobs, Growth & Prosperity publishes the monthly Illinois Job Index and MSA Report as tools for elected officials, policy leaders and the public. We can better understand the Illinois economy and business climate by comparing and measuring Illinois employment growth rates against those of the Rest of the Midwest (RMW: Indiana, Iowa, Michigan, Missouri, Ohio and Wisconsin) and the Nation. Data and analysis is provided by the Illinois Economic Observatory / Regional Economics Applications Laboratory, University of Illinois. The MSA data (unless noted) were seasonally adjusted to be consistent with state totals.

Talking Points

State, Downstate & Metro	<ul style="list-style-type: none"> By adding 12,200 jobs at 0.20% in June Illinois restored a positive trend since November 2006 which was interrupted by a net loss in April. The 0.20% growth rate of Illinois was contributed by a varied and mixed performance of the Metro areas and the counterparts like Chicago versus Downstate or Metro versus Non-metro. Downstate, based on revised data, recovered from a 0.39% net loss in the previous month by adding 9,800 new jobs (0.58%) in June. Chicago, on the other hand, improved its performance by adding 2,400 new jobs at 0.06% in June compared to a 0.03% growth in May. Illinois non-metro added 9,000 jobs at 1.75% in March as opposed to a negative growth in May. Illinois Metro, similarly, recorded a 0.06% growth by adding 3,200 jobs in June while it lost by 0.04% during May. As reported in June, Illinois registered 1.11% growth over the last 12-months by adding 65,800 jobs, the largest number reported since September 2006. Over last 12 months, Metro and Non-metro grew by 0.96% and 2.73% adding 51,88 and 14,000 jobs respectively. However, by adding 43,900 jobs at 1.04%, Chicago's performance was even better.
MSA page (2-3)	<ul style="list-style-type: none"> While Illinois Metro had a 0.06% overall growth in June, four MSAs made net gains whereas the remaining six recorded net losses. Chicago added 2,400 jobs at 0.06% followed by Metro-east and Champaign-Urbana adding 1,390 and 500 jobs at 0.58% and 0.48% growth rate respectively. Compared to May, the highest gain in performance in June was recorded for Champaign-Urbana which grew by 0.45% as opposed to a negative 1.27% loss in May. Metro-East also did well, growing by 0.58% up from a loss of 0.25%. However, Decatur experienced the deepest fall of performance in declining by 0.09% down from a 0.08% growth in May. Among the MSAs, Rockford lost the most jobs, 381 (-0.24%), followed by Springfield which lost 251 jobs at -0.22%. Davenport-Rock Island-Moline is the other MSA which recorded a three figure loss (218 jobs at -0.12%) in June. Over the last 12 months, Kankakee grew fastest at 1.24% followed by Rockford at 1.22%. Chicago added the most jobs, 43,900 jobs followed by Metro-East and Peoria which added 2,100 and 2,000 jobs respectively in that period. Only Davenport-Rock Island-Moline, however, recorded a negative rating.

Total non-farm Employment growth rate Jan 1990 – May 2007



Talking Points

State, Downstate & Metro

- Except for an interruption in April 2007 the Illinois job market consistently expanded since November 2006, staying on its upward trend since early 2004.
- While the average growth rate for Metro in 2007 so far of 0.09% is same as the average of 2007, the average for last three months of 0.01% is on the low side. Non-metro, on the other hand, is doing much better in 2007 (0.56% average) compared to 2006 (0.15% average).
- Due to better performance of Illinois compared to RMW in 2006 and 2007 to date, the gap in their job indices was at its lowest level since January 1994.
- While the growth of downstate is marked by fluctuations, the average growth in 2007 of 0.21% is much higher than the average in 2006 of 0.09%.

By MSA

Total non-farm employment Seasonally adjusted unless noted*	Apr 2007 – May 2007			Last 12 months	
	Change compared to Illinois	Growth Rate %	Number Of Jobs	Growth Rate %	Number of Jobs
Bloomington-Normal (B-N)	-	-0.33	-300	0.22	200
Champaign-Urbana (C-U-R)	+	0.45	500	0.54	600
Chicago	-	0.06	2,400	1.04	43,900
Davenport-Rock Island-Moline (D-R-M)	-	-0.11	-200	-0.05	-100
Decatur	-	-0.18	-100	0.92	500
Kankakee	-	-0.23	-100	1.15	500
Peoria	-	0	0	1.09	2,000
Rockford	-	-0.25	-400	1.21	1,900
Springfield	-	-0.18	-200	0.09	100
Metro-East*	+	0.58	1,400	0.88	2,100
Illinois		0.20	12,200	1.11	65,800

MSA League Tables: Non-farm Employment Growth Rate

Monthly growth:

Rank	April 2007		May 2007	Rank
1	Decatur (0.18%)		Metro-East (0.58%)	1
2	Peoria (0.16%)		Champaign -Urbana-Rantoul (0.45 %)	2
3	Rockford (0.13%)		Chicago (0.03%)	3
4	Chicago (0.03%)		Peoria (0%)	4
5	Davenport -Rock Island -Moline (-0.21%)		Davenport -Rock Island -Moline (-0.11%)	5
6	Metro-East (-0.25%)		Springfield (-0.18%)	6
7	Springfield (-0.44%)		Decatur (-0.18%)	7
8	Kankakee (-0.45%)		Kankakee (-0.23%)	8
9	Bloomington -Normal (-0.66%)		Rockford (-0.25%)	9
10	Champaign -Urbana-Rantoul (-1.32%)		Bloomington -Normal (-0.33%)	10

Growth over last 12-months:

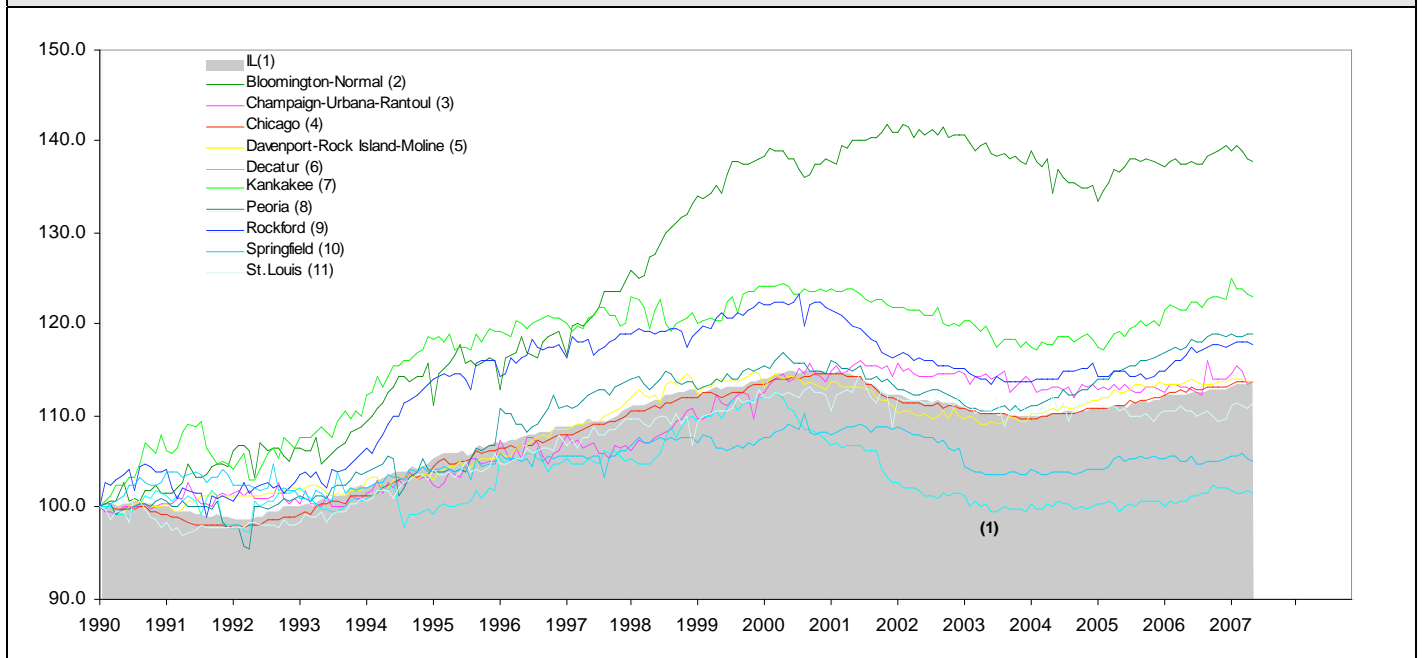
Rank	April 2007		May 2007	Rank
1	Rockford (1.92%)		Rockford (1.21%)	1
2	Kankakee (1.38%)		Kankakee (1.15%)	2
3	Peoria (1.31%)		Peoria (1.09%)	3
4	Decatur (1.29%)		Chicago (1.04%)	4
5	Chicago (0.94%)		Decatur (0.92%)	5
6	Bloomington -Normal (0.56%)		Metro-East (0.88%)	6
7	Davenport -Rock Island -Moline (0.37%)		Champaign -Urbana -Rantoul (0.54%)	7
8	Springfield (0.27 %)		Bloomington -Normal (0.22 %)	8
9	Champaign -Urbana-Rantoul (0.18 %)		Springfield (0.09%)	9
10	Metro-East (-0.21%)		Davenport -Rock Island -Moline (-0.05%)	10

Talking Points

MSA
League
Tables

- The top three performers in April, Decatur, Peoria and Rockford slipped in May while Champaign-Urbana jumped from last place to second
- Metro-East moved from sixth to first place
- For the last 12 months growth league table, the top three performers in April, Rockford, Kankakee and Peoria, retained their positions.
- The greatest leap in the rankings was made by Metro-East and the greatest decline by Davenport-Rock Island-Moline
- Decatur (4th to 5th), Bloomington-Normal (6th to 8th), Davenport-Rock Island-Moline (7th to 10th) and Springfield (8th to 9th) all lost ground
- In contrast, Chicago (5th to 4th), Champaign-Urbana (9th to 7th) and Metro-East (10th to 6th) all gained

Total non-farm Employment growth rate Jan 1990 – May 2007



Shaded area on above chart represents Illinois growth.

MSA DESCRIPTION: **Bloomington-Normal (B-N):** McLean Co. **Champaign-Urbana (C-U-R):** Champaign Co., Ford Co. & Piatt Co. **Chicago:** Cook Co. IL, DeKalb Co. IL, DuPage Co. IL, Grundy Co. IL, Kane Co. IL, Kendall Co. IL, Lake Co. IL, McHenry Co. IL, Will Co. IL & Kenosha Co. WI **Davenport-Moline-Rock Island (D-R-M):** Henry Co. IL, Mercer Co. IL, Rock Island Co. IL & Scott Co. IA **Decatur:** Macon Co. **Kankakee:** Kankakee Co. **Metro-East:** Bond Co., Calhoun Co., Clinton Co., Jersey Co., Macoupin Co., Madison Co., Monroe Co. & St. Clair Co. **Peoria-Pekin (Peoria):** Marshall Co., Peoria Co., Stark Co., Tazewell Co. & Woodford Co. **Rockford:** Boone Co. & Winnebago Co. **Springfield:** Menard Co. & Sangamon Co.

The MSA data (unless noted) were seasonally adjusted to be consistent with state totals.

ABOUT: The Illinois Coalition for Jobs, Growth & Prosperity is a not-for-profit 501-c-4 organization. Coalition founding members include the Chicagoland Chamber of Commerce, the Illinois Business Roundtable, the Illinois Civil Justice League, the Illinois Manufacturers' Association, and the Illinois State Chamber of Commerce. Established to provide Illinois voters with information about government-related issues that have a direct effect on jobs, the Coalition represents firms employing more than a million Illinois workers.