

# Illinois

## Job Index:

### MSA Report



#### Illinois Coalition for Jobs, Growth & Prosperity

Release  
**4/x/2007**

data  
**Jan 1990 / Feb 2007**

Issue  
**10.1**

[www.jobsillinois.us](http://www.jobsillinois.us)

As a companion to the March 2007 Illinois Job Index that reports a Positive **Rating**, this MSA Report provides a localized picture on Illinois job growth and allows for comparisons between local economies, Illinois, Nation and Rest of the Midwest.

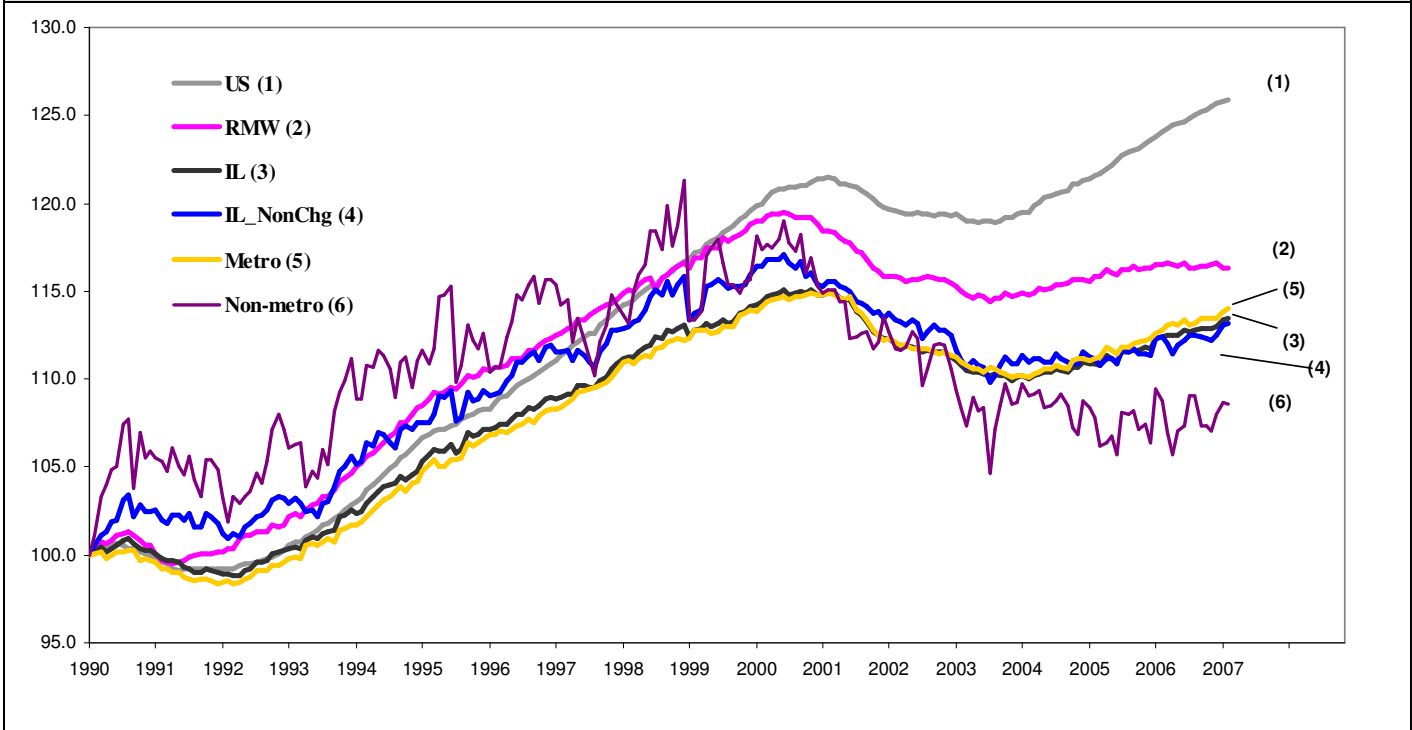
March 2007	Total non-farm employment	Jan 2007 –Feb 2007		Last 12 months	
		Growth Rate (%)	Number of Jobs	Growth Rate (%)	Number of Jobs
	Illinois non-Metro (Rural)	-0.04	-200	-0.19	-1,000
	Illinois non-Chicago (Downstate)	+0.07	+1,200	+0.67	+10,400
	Illinois Metro	+0.14	+7,900	+1.04	+56,400
	Illinois	+0.13	+7,700	+0.94	+55,400
	Rest of Midwest (RMW)	-0.001	- 200	- 0.20	- 40,200
	Nation	+0.07	+97,000	+1.48	+2,000,000

The Illinois Coalition for Jobs, Growth & Prosperity publishes the monthly Illinois Job Index and MSA Report as tools for elected officials, policy leaders and the public. We can better understand the Illinois economy and business climate by comparing and measuring Illinois employment growth rates against those of the Rest of the Midwest (RMW: Indiana, Iowa, Michigan, Missouri, Ohio and Wisconsin) and the Nation. Data and analysis is provided by the Illinois Economic Observatory / Regional Economics Applications Laboratory, University of Illinois. The MSA data (unless noted) were seasonally adjusted to be consistent with state totals.

### Talking Points

<p><b>State, Downstate &amp; Metro</b></p>	<ul style="list-style-type: none"> <li>Illinois added 7,700 new jobs at 0.13% in February and maintained a positive rating for four consecutive months since November 2006.</li> <li>Downstate however, added 1,200 jobs (0.07%) in February which is a big drop from January growth rate of 0.52%. However, February is the third month since December for Downstate to post a positive rating. Chicago, the counterpart, also had a slower growth rate by adding 6,500 jobs in February at 0.15% compared to 0.24% in January.</li> <li>Since a modest 0.87% growth in December 2006 the non-metro has been experiencing a fall in growth rate, and February data shows a 200 job loss at -0.04%. Metro areas, on the other hand added 7,900 jobs (0.14%).</li> <li>The drop of growth rate in Illinois in February compared to January, therefore, is an affect of simultaneous fall of performance in Metro and Non-metro part as well as in Chicago and Downstate.</li> <li>Quite similar to January data, in terms of 12-month's job creation, Chicago created nearly four times as many jobs as did Non-Chicago. While Metro added 56,400 jobs Non-metro had a net loss of 1,000 jobs during last 12-months.</li> </ul>
<p><b>MSA page (2-3)</b></p>	<ul style="list-style-type: none"> <li>Among Illinois' MSAs Champaign-Urbana and Metro East registered best performance in February growing at 0.53% and 0.37% respectively. Kankakee on the other hand posted the highest loss of performance by loosing at -0.45% in February compared to a 1.59% gain in January,</li> <li>In terms of number of jobs created, like previous month, Chicago added the greatest number, 6,500, followed by Metro-East which added 900 jobs. However, their contribution dropped sharply from January.</li> <li>Contrary to January, four Illinois MSAs, namely Davenport-Rock Island- Moline, Decatur, Kankakee and Peoria registered net loss of 600 jobs in February.</li> <li>Among the MSA notable gain of performance was recorded for Bloomington Normal which added 300 jobs in February compared to 200 job loss in January.</li> <li>Over last 12-month period fastest growth was recorded for Rockford at 1.93% followed by Champaign Urbana at 1.61%. The largest, 44,000 number of jobs however, was added by Chicago followed by Rockford which added 3,000 jobs in that period. Metro-east on the other hand posted zero growth in that period.</li> </ul>

## Total non-farm Employment growth rate Jan 1990 – Feb 2007



## Talking Points

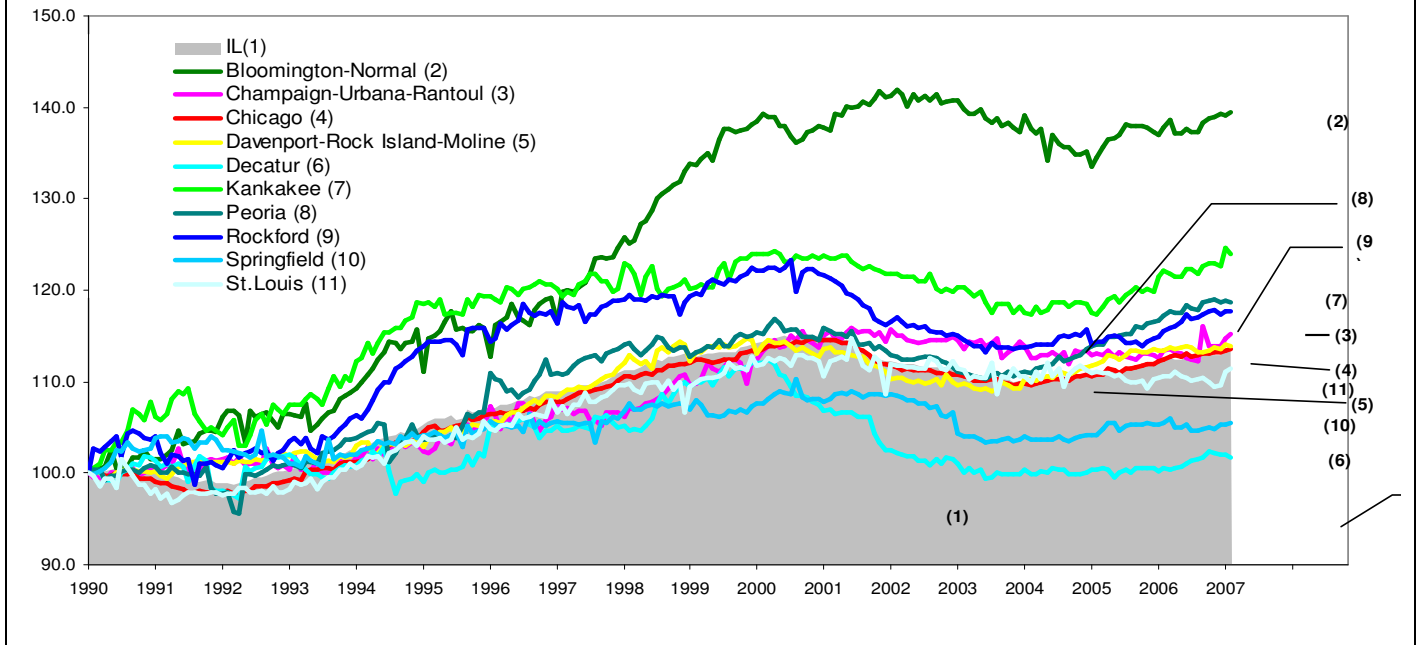
### State, Downstate & Metro

- A 0.13% growth in February enabled Illinois to continue an upward movement in growth curve since November 2006.
- While Metro areas contributed most of the job growth in Illinois in February and thus maintained a positive slope since November 2006, fluctuating non-metro moved towards a negative slope in February.
- Continued growth of Illinois for last four months coupled with net loss in RMW for last two months has narrowed the gap in their job indices.
- Steep slope of the growth curve of Downstate was moderated by slow gain at 0.07% in February down from 0.52% in January.

## By MSA

Total non-farm employment Seasonally adjusted unless noted*	Jan 2007 – Feb 2007			Last 12 months	
	Change compared to Illinois	Growth Rate %	Number of Jobs	Growth Rate %	Number of Jobs
Bloomington-Normal (B-N)	+	0.33	300	1.22	1,100
Champaign-Urbana (C-U-R)	+	0.53	600	1.61	1,800
Chicago	+	0.15	6,500	1.04	44,000
Davenport-Rock Island-Moline (D-R-M)	-	-0.05	-100	0.53	1,000
Decatur	-	-0.36	-200	1.10	600
Kankakee	-	-0.45	-200	1.60	700
Peoria	-	-0.05	-100	1.26	2,300
Rockford	-	0.00	0	1.93	3,000
Springfield	+	0.18	200	0.00	0
Metro-East*	+	0.37	900	0.79	1,900
<b>Illinois</b>		<b>0.13</b>	<b>7,700</b>	<b>0.94</b>	<b>55,400</b>

## Total non-farm Employment growth rate Jan 1990 – Feb 2007



Shaded area on above chart represents Illinois growth.

MSA DESCRIPTION: **Bloomington-Normal (B-N)**: McLean Co. **Champaign-Urbana (C-U-R)**: Champaign Co., Ford Co. & Piatt Co. **Chicago**: Cook Co. IL, DeKalb Co. IL, DuPage Co. IL, Grundy Co. IL, Kane Co. IL, Kendall Co. IL, Lake Co. IL, McHenry Co. IL, Will Co. IL & Kenosha Co. WI **Davenport-Moline-Rock Island (D-R-M)**: Henry Co. IL, Mercer Co. IL, Rock Island Co. IL & Scott Co. IA **Decatur**: Macon Co. **Kankakee**: Kankakee Co. **Metro-East**: Bond Co., Calhoun Co., Clinton Co., Jersey Co., Macoupin Co., Madison Co., Monroe Co. & St. Clair Co. **Peoria-Pekin (Peoria)**: Marshall Co., Peoria Co., Stark Co., Tazewell Co. & Woodford Co. **Rockford**: Boone Co. & Winnebago Co. **Springfield**: Menard Co. & Sangamon Co.

The MSA data (unless noted) were seasonally adjusted to be consistent with state totals.

**ABOUT:** The Illinois Coalition for Jobs, Growth & Prosperity is a not-for-profit 501-c-4 organization. Coalition founding members include the Chicagoland Chamber of Commerce, the Illinois Business Roundtable, the Illinois Civil Justice League, the Illinois Manufacturers' Association, and the Illinois State Chamber of Commerce. Established to provide Illinois voters with information about government-related issues that have a direct effect on jobs, the Coalition represents firms employing more than a million Illinois workers.