

# Illinois Job Index: MSA Report



## Illinois Coalition for Jobs, Growth & Prosperity

Release <b>11/10/2007</b>	data <b>Jan 1990 / Sep 2007</b>	Issue <b>10.10</b>	<b>www.jobsillinois.us</b>
------------------------------	------------------------------------	-----------------------	----------------------------

As a companion to the August 2007 Illinois Job Index that reports a **Negative** Rating, this MSA Report provides a localized picture on Illinois job growth and allows for comparisons between local economies, Illinois, Nation and Rest of the Midwest.

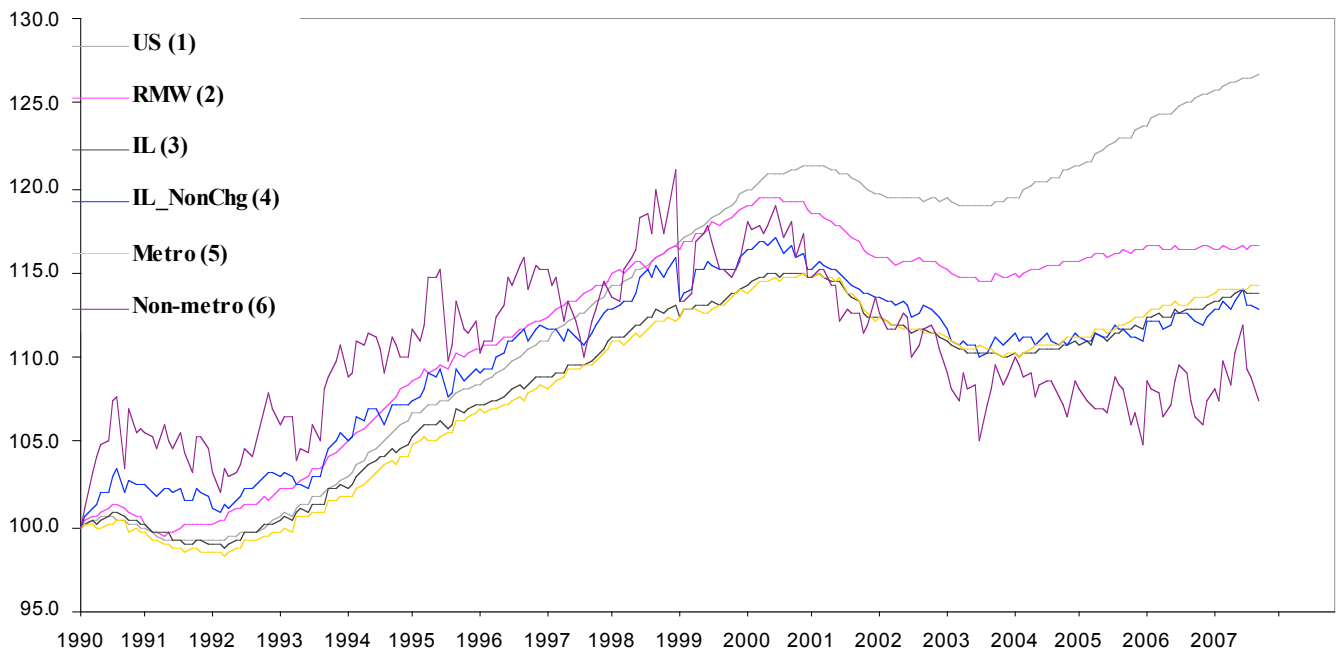
October 2007	Total non-farm employment	Aug 2007 – Sep 2007		Last 12 months	
		Growth Rate (%)	Number of Jobs	Growth Rate (%)	Number of Jobs
	Illinois non-Metro (Rural)	- 1.32	- 6,800	- 0.06	- 300
	Illinois non-Chicago (Downstate)	- 0.16	- 2,800	+0.45	+7,600
	Illinois Metro	+0.10	+5,300	+0.81	+43,900
	Illinois	- 0.03	- 1,500	+0.73	+43,600
	Rest of Midwest (RMW)	-0.07	- 14,300	+0.16	+31,300
	Nation	+0.08	+110,000	+1.19	+1,629,000

The Illinois Coalition for Jobs, Growth & Prosperity publishes the monthly Illinois Job Index and MSA Report as tools for elected officials, policy leaders and the public. We can better understand the Illinois economy and business climate by comparing and measuring Illinois employment growth rates against those of the Rest of the Midwest (RMW: Indiana, Iowa, Michigan, Missouri, Ohio and Wisconsin) and the Nation. Data and analysis is provided by the Illinois Economic Observatory / Regional Economics Applications Laboratory, University of Illinois. The MSA data (unless noted) were seasonally adjusted to be consistent with state totals.

### Talking Points

<p><b>State, Downstate &amp; Metro</b></p>	<ul style="list-style-type: none"> <li>Illinois recorded a negative rating for third time in 2007 by losing 1,500 jobs at -0.03% in September. However, the negative rating reported last month was revised to positive.</li> <li>While the overall performance of Illinois was in the negative its various counterparts like Chicago versus Downstate or Metro versus Non-metro, and different metro areas showed mixed performance.</li> <li>For downstate the 2,800 job-loss at -0.16% in September compared to a revised net loss of 2,700 jobs at -0.16% in August does not show much difference. Chicago, on the other hand, added 1,300 new jobs at 0.03% in September which is a decline of performance compared to a revised 4,600 gain at 0.11% in August.</li> <li>Illinois Metro recorded a 0.10% growth by adding 5,300 jobs during September up from a revised 4,700 job gains during August. Non-metro by contrast lost 6,800 jobs at -1.32% showing a drop in performance compared to a 2,800 job loss in August.</li> <li>Over the last 12-months, however, Illinois registered a 0.73% growth rate by adding 43,600 jobs.</li> <li>Through September, Metro grew by 0.81% by adding 43,900 jobs over the last 12-months whereas Non-metro lost 300 jobs at -0.06% in the same period. Chicago, on the other hand added 36,000 jobs at 0.85% as opposed to 7,600 jobs added by Non-Chicago at 0.45%.</li> </ul>
<p><b>MSA page (2-4)</b></p>	<ul style="list-style-type: none"> <li>Illinois Metro had a 0.10% overall growth in September up from 0.09% in August. Among the MSAs, seven recorded net gains and the remaining three recorded net losses. Champaign-Urbana-Rantoul added the highest number, 3,500 jobs, at 3.18% followed by Chicago which added 1,300 jobs at 0.03%.</li> <li>Champaign-Urbana-Rantoul registered the highest gain in performance with a 3.18% growth in September up from a -0.81% loss in August. Kankakee registered 0.69% growth up from a zero growth in which is the second best performance gain. On the other hand Davenport-Rock Island-Moline showed the highest fall in performance with a net -0.32% loss in September down from 0.21% growth in August.</li> <li>Among the MSAs, Davenport-Rock Island-Moline and Rockford which had a negative growth in September each lost 200 jobs.</li> <li>Over last 12 months Metro-East grew fastest at 1.92%, by adding 4,600 Jobs. Chicago with a 0.85% growth rate was in the second position in terms of growth rate. Chicago, however, remained the biggest contributor among the MSAs, by adding 36,000 jobs followed by Metro-East which added 4,600 jobs in that period. Only Champaign-Urbana-Rantoul registered net loss.</li> </ul>

**Total non-farm Employment growth rate Jan 1990 – Aug 2007**



**Talking Points**

**State,  
Downstate &  
Metro**

- For Illinois, average monthly growth rate in 2007 until September is 0.07%, which is lower than the 2006 average of 0.09%.
- The average growth rate for Metro in 2007 is same as the 2006 average of 0.08%. In contrast resulting from the negative growth for last three months non-metro records a zero average growth in 2007 compared to a 0.20% average in 2006.
- Compared to RMW, Illinois continues to do better in terms of yearly aggregated trend both in 2006 and 2007.
- As regards the trend for Downstate, the average growth in 2007 of 0.05% until September is below the average in 2006 of 0.11%.

**By MSA**

Total non-farm employment Seasonally adjusted unless noted*	Aug 2007 –Sep 2007			Last 12 months	
	Change compared to Illinois	Growth Rate %	Number Of Jobs	Growth Rate %	Number of Jobs
Bloomington-Normal (B-N)	+	0.33	300	0.78	700
Champaign-Urbana (C-U-R)	+	3.18	3,500	- 0.18	- 200
Chicago	+	0.03	1,300	0.85	36,000
Davenport-Rock Island-Moline (D-R-M)	-	-0.11	-200	0.70	1,300
Decatur	+	0.18	100	0.36	200
Kankakee	+	0.69	300	0.46	200
Peoria	-	-0.11	-200	0.32	600
Rockford	-	-0.13	- 200	0.32	500
Springfield	+	0.27	300	0	0
Metro-East*	+	0.04	100	1.92	4,600
<b>Illinois</b>		-0.03	-1,500	0.73	43,600

# MSA League Tables\*: Non-farm Employment Growth Rate

Monthly growth:

Rank	August 2007	September 2007	Rank
1	Decatur (0.37%)	Champaign-Urbana-Rantoul (3.18%)	1
2	Metro-East (0.25%)	Kankakee (0.69%)	2
3	Bloomington-Normal (0.22%)	Bloomington-Normal (0.33%)	3
4	Davenport-Rock Island-Moline (0.21%)	Springfield (0.27%)	4
5	Chicago (0.11%)	Decatur (0.18%)	5
6	Peoria (0.05%)	Metro-East (0.04%)	6
7	Kankakee (0%)	Chicago (0.03%)	7
8	Rockford (-0.13%)	Davenport-Rock Island-Moline (-0.11%)	8
9	Springfield (-0.27%)	Peoria (-0.11%)	9
10	Champaign-Urbana-Rantoul (-0.81%)	Rockford (-0.13%)	10

Growth over last 12-months:

Rank	August 2007	September 2007	Rank
1	Metro-East (2.10%)	Metro-East (1.92%)	1
2	Peoria (1.14%)	Chicago (0.85%)	2
3	Chicago (1.00%)	Bloomington-Normal (0.78%)	3
4	Bloomington-Normal (0.89%)	Davenport-Rock Island-Moline (0.70%)	4
5	Rockford (0.76%)	Kankakee (0.46%)	5
6	Davenport-Rock Island-Moline (0.27%)	Decatur (0.36%)	6
7	Kankakee (0.23%)	Peoria (0.32%)	7
8	Decatur (0.18%)	Rockford (0.32%)	8
9	Springfield (-0.27%)	Springfield (0%)	9
10	Champaign-Urbana-Rantoul (-0.90%)	Champaign-Urbana-Rantoul (-0.18%)	10

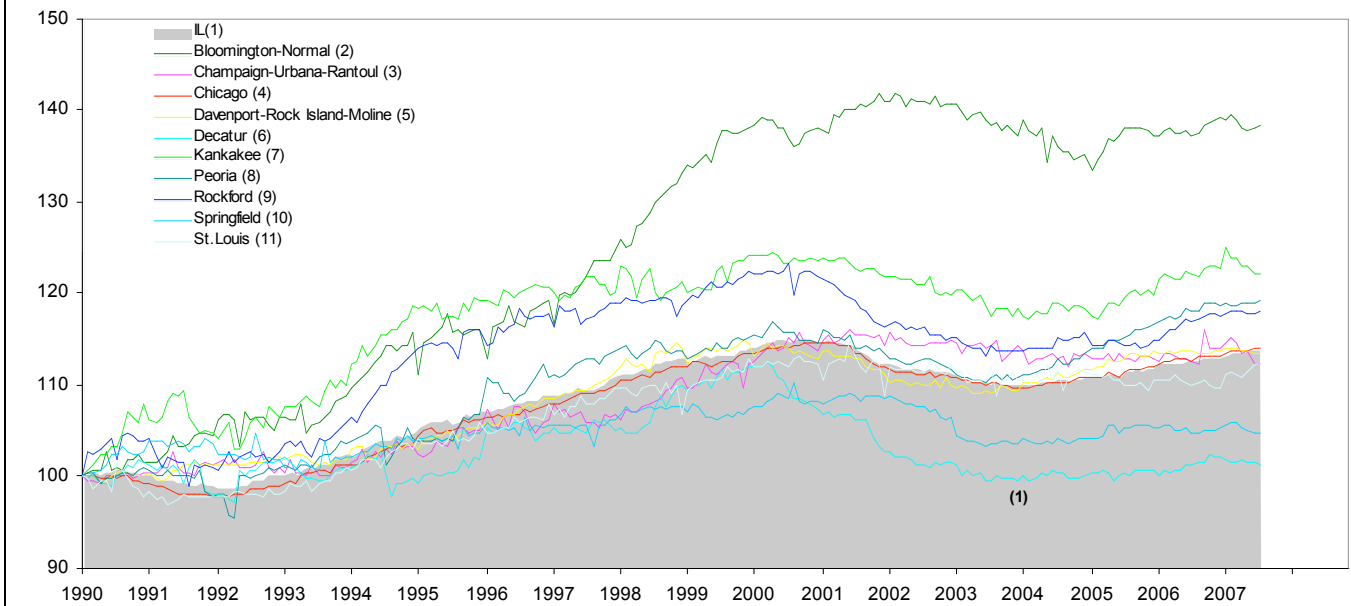
## Talking Points

### MSA League Tables

- The most notable upward move in September is that of Champaign-Urbana-Rantoul from 10<sup>th</sup> to 1<sup>st</sup> position.
- Kankakee and Springfield improved from 7<sup>th</sup> and 9<sup>th</sup> position to 2<sup>nd</sup> and 4<sup>th</sup> position respectively.
- The rank of Bloomington-Normal stayed at 3<sup>rd</sup>.
- Decatur and Metro-East the two best performers in August slipped down to 5<sup>th</sup> and 6<sup>th</sup> position respectively.
- Davenport-Rock Island-Moline and Chicago fell from 4<sup>th</sup> and 5<sup>th</sup> position to 8<sup>th</sup> and 7<sup>th</sup> ranks respectively. Rockford moved from 8<sup>th</sup> down to 10<sup>th</sup> position.
- In the league table for the last 12 months growth, Metro-East, the top performer in August retained its position. Springfield and Champaign-Urbana-Rantoul also were held in their original 9<sup>th</sup> and 10<sup>th</sup> position.
- Two MSA had lost grounds in September. Among them, Peoria faced the most abrupt drop from 2<sup>nd</sup> to the 7<sup>th</sup> position. Rockford slipped from 5<sup>th</sup> to the 8<sup>th</sup> position.
- Five MSAs had a lift in their position. Among them Davenport-Rock Island-Moline (6<sup>th</sup> to 4<sup>th</sup>), Kankakee (7<sup>th</sup> to 5<sup>th</sup>) and Decatur (8<sup>th</sup> to 6<sup>th</sup>) all gained by two ranks.
- Chicago (3<sup>rd</sup> to 2<sup>nd</sup>) and Bloomington-Normal (4<sup>th</sup> to 3<sup>rd</sup>) each ascended by one position.

\*MSA League Tables are based on revised employment data. For instances of equal growth rate for multiple MSAs ranks are decided based on change of growth rate from previous month.

## Total non-farm Employment growth rate Jan 1990 – Sep 2007



Shaded area on above chart represents Illinois growth.

MSA DESCRIPTION: **Bloomington-Normal (B-N):** McLean Co. **Champaign-Urbana (C-U-R):** Champaign Co., Ford Co. & Piatt Co. **Chicago:** Cook Co. IL, DeKalb Co. IL, DuPage Co. IL, Grundy Co. IL, Kane Co. IL, Kendall Co. IL, Lake Co. IL, McHenry Co. IL, Will Co. IL & Kenosha Co. WI **Davenport-Moline-Rock Island (D-R-M):** Henry Co. IL, Mercer Co. IL, Rock Island Co. IL & Scott Co. IA **Decatur:** Macon Co. **Kankakee:** Kankakee Co. **Metro-East:** Bond Co., Calhoun Co., Clinton Co., Jersey Co., Macoupin Co., Madison Co., Monroe Co. & St. Clair Co. **Peoria-Pekin (Peoria):** Marshall Co., Peoria Co., Stark Co., Tazewell Co. & Woodford Co. **Rockford:** Boone Co. & Winnebago Co. **Springfield:** Menard Co. & Sangamon Co.

The MSA data (unless noted) were seasonally adjusted to be consistent with state totals.

**ABOUT:** The Illinois Coalition for Jobs, Growth & Prosperity is a not-for-profit 501-c-4 organization. Coalition founding members include the Chicagoland Chamber of Commerce, the Illinois Business Roundtable, the Illinois Civil Justice League, the Illinois Manufacturers' Association, and the Illinois State Chamber of Commerce. Established to provide Illinois voters with information about government-related issues that have a direct effect on jobs, the Coalition represents firms employing more than a million Illinois workers.