

Illinois Job Index: MSA Report



Illinois Coalition for Jobs, Growth & Prosperity

Release 10/05/2007	data Jan 1990 / Aug 2007	Issue 10.9	www.jobsillinois.us
------------------------------	------------------------------------	----------------------	----------------------------

As a companion to the August 2007 Illinois Job Index that reports a **Negative** Rating, this MSA Report provides a localized picture on Illinois job growth and allows for comparisons between local economies, Illinois, Nation and Rest of the Midwest.

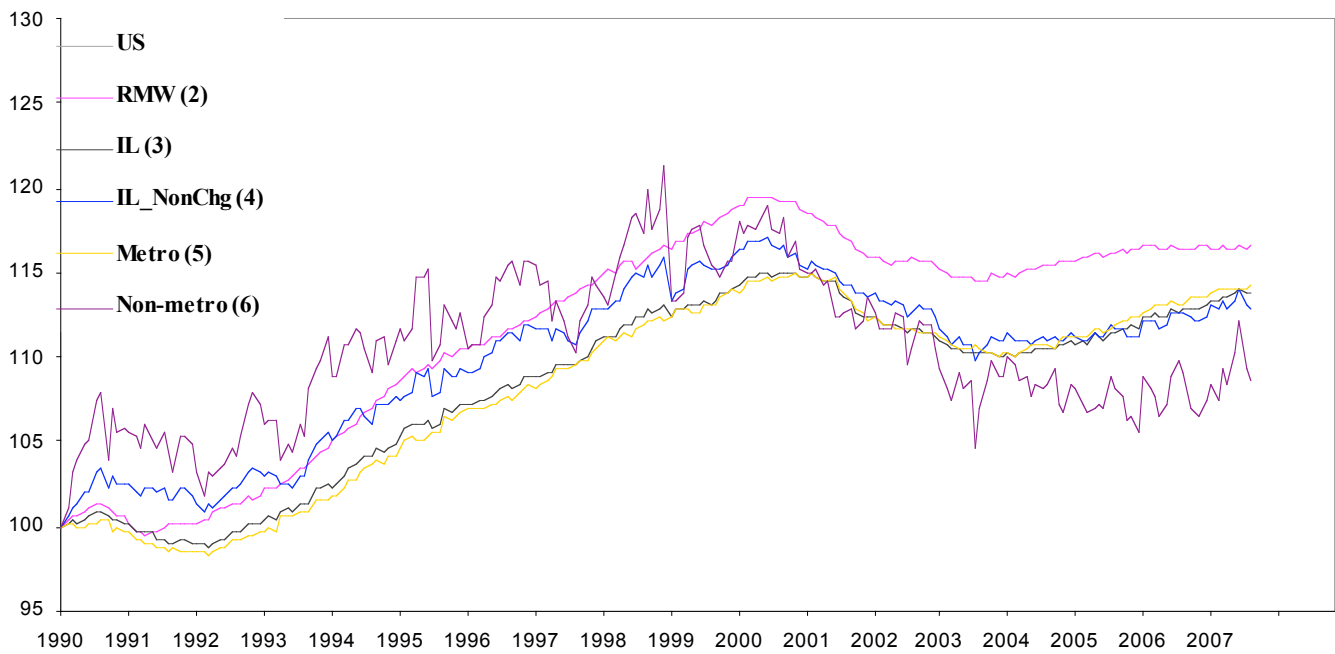
September 2007	Total non-farm employment	Jul 2007 – Aug 2007		Last 12 months	
		Growth Rate (%)	Number of Jobs	Growth Rate (%)	Number of Jobs
	Illinois non-Metro (Rural)	- 0.71	- 3,700	- 0.39	- 2,000
	Illinois non-Chicago (Downstate)	- 0.21	- 3,700	+0.38	+6,500
	Illinois Metro	+0.05	+2,800	+0.90	+48,900
	Illinois	- 0.02	- 900	+0.79	+46,900
	Rest of Midwest (RMW)	+0.14	+27,700	+0.24	+47,300
	Nation	-0.003	- 4,000	+1.17	+1,599,000

The Illinois Coalition for Jobs, Growth & Prosperity publishes the monthly Illinois Job Index and MSA Report as tools for elected officials, policy leaders and the public. We can better understand the Illinois economy and business climate by comparing and measuring Illinois employment growth rates against those of the Rest of the Midwest (RMW: Indiana, Iowa, Michigan, Missouri, Ohio and Wisconsin) and the Nation. Data and analysis is provided by the Illinois Economic Observatory / Regional Economics Applications Laboratory, University of Illinois. The MSA data (unless noted) were seasonally adjusted to be consistent with state totals.

Talking Points

<p>State, Downstate & Metro</p>	<ul style="list-style-type: none"> By losing 900 jobs at -0.02% in August Illinois recorded a negative rating for the second consecutive month. This is the third negative rating for Illinois in 2007. Compared to a revised 12,600 job loss in July, the August performance is much better. While this improvement was reflected in the change of performance of the various counterparts of Illinois like Chicago versus Downstate or Metro versus Non-metro, their contribution to the payroll was not uniform. Downstate lost 3,600 jobs at - 0.21% in August which is a notable improvement compared to a 12,600 revised loss in July. Chicago, on the other hand, added 2,700 new jobs at 0.05% in August improving from a revised zero growth in July. Illinois Metro recorded a 0.05% growth by adding 2,800 jobs during August up from a revised 400 jobs gains during July. Non-metro by contrast lost 3,700 jobs at -0.71% which is also a gain in performance compared to a 12,600 job loss in July. Over the last 12-months, however, Illinois registered a 0.79% growth rate by adding 46,900 jobs. Through August, Metro grew by 0.90% by adding 48,900 jobs over the last 12-months whereas Non-metro lost 2,000 jobs at -0.39% in the same period. Chicago, on the other hand added 40,400 jobs at 0.95% as opposed to 6,500 jobs added by Non-Chicago at 0.38%.
<p>MSA page (2-4)</p>	<ul style="list-style-type: none"> Illinois Metro had a 0.05% overall growth in August. Among the MSAs, six recorded net gains and the remaining four recorded net losses. Chicago added the highest number, 2,700 jobs, at 0.06% followed by Metro-east which added 600 jobs at 0.25%. As regards change in performance, Decatur registered the highest gain in performance with a 0.37% growth in August up from a -0.18% loss in July. Davenport-Rock Island-Moline improved to 0.21% growth up from a -0.21% loss. On the other hand Champaign-Urbana-Rantoul showed the highest fall in performance while declining by -0.72% compared with 0.09% growth in July. Among the MSAs, Champaign-Urbana-Rantoul lost the most jobs, 800 (-0.72%), followed by Springfield which lost 300 jobs at -0.27%. Metro-East grew fastest at 2.1%, over last 12 months by adding 5,000 Jobs. Peoria with a 1.09% growth rate was in the second position. Chicago, however, remained the biggest contributor among the MSAs, by adding 40,400 jobs followed by Metro-East which added 5,000 jobs in that period. Champaign-Urbana-Rantoul and Springfield registered net losses.

Total non-farm Employment growth rate Jan 1990 – Aug 2007



Talking Points

**State,
Downstate &
Metro**

- For Illinois, through August the 2007, average monthly growth rate is at 0.08%, below the 2006 average of 0.09%.
- Similarly the average growth rate for Metro in 2007, 0.07%, is slightly below the 2006 average of 0.08%. Non-metro so far has a better performance in 2007 (0.16% average) compared to 2006 (0.14% average).
- Compared to RMW, Illinois continues to do better in terms of yearly aggregated trend both in 2006 and 2007.
- As regards the trend for Downstate, the average growth in 2007 of 0.07% until August is below the average in 2006 of 0.09%.

By MSA

Total non-farm employment Seasonally adjusted unless noted*	Jun 2007 – Aug 2007			Last 12 months	
	Change compared to Illinois	Growth Rate %	Number Of Jobs	Growth Rate %	Number of Jobs
Bloomington-Normal (B-N)	+	0.11	100	0.89	800
Champaign-Urbana (C-U-R)	-	- 0.72	- 800	- 0.90	- 1,000
Chicago	+	0.06	2,700	0.95	40,400
Davenport-Rock Island-Moline (D-R-M)	+	0.21	400	- 0.27	- 500
Decatur	+	0.37	200	0.37	200
Kankakee	-	- 0.23	- 100	0	0
Peoria	+	0.11	200	1.09	2,000
Rockford	-	- 0.13	- 200	1.02	1,200
Springfield	-	- 0.27	- 300	0.76	-200
Metro-East*	+	0.25	600	-0.18	5,000
Illinois		- 0.02	- 900	2.10	46,900

MSA League Tables*: Non-farm Employment Growth Rate

Monthly growth:

Rank	July 2007	August 2007	Rank
1	Bloomington –Normal (0.22%)	Decatur (0.37%)	1
2	Peoria (0.22%)	Metro-East (0.25%)	2
3	Springfield (0.18%)	Davenport -Rock Island-Moline (0.21%)	3
4	Champaign-Urbana-Rantoul (0.09%)	Bloomington -Normal (0.11%)	4
5	Rockford (0.06%)	Peoria (0.11%)	5
6	Chicago (0%)	Chicago (0.06%)	6
7	Kankakee (0%)	Rockford (-0.13%)	7
8	Metro-East (-0.04%)	Kankakee (-0.23%)	8
9	Decatur (-0.18%)	Springfield (-0.27%)	9
10	Davenport -Rock Island-Moline (-0.21%)	Champaign-Urbana-Rantoul (-0.72%)	10

Growth over last 12-months:

Rank	July 2007	August 2007	Rank
1	Metro-East (2.02%)	Metro-East (2.10%)	1
2	Chicago (1.09%)	Peoria (1.09%)	2
3	Rockford (1.02%)	Chicago (0.95%)	3
4	Peoria (0.98%)	Bloomington –Normal (0.89%)	4
5	Bloomington –Normal (0.89%)	Rockford (0.76%)	5
6	Springfield (0.27%)	Decatur (0.37%)	6
7	Decatur (0%)	Davenport -Rock Island-Moline (-0.27%)	7
8	Champaign-Urbana-Rantoul (-0.18%)	Kankakee (0%)	8
9	Kankakee (-0.23%)	Springfield (-0.18%)	9
10	Davenport -Rock Island-Moline (-0.42%)	Champaign-Urbana-Rantoul (-0.90%)	10

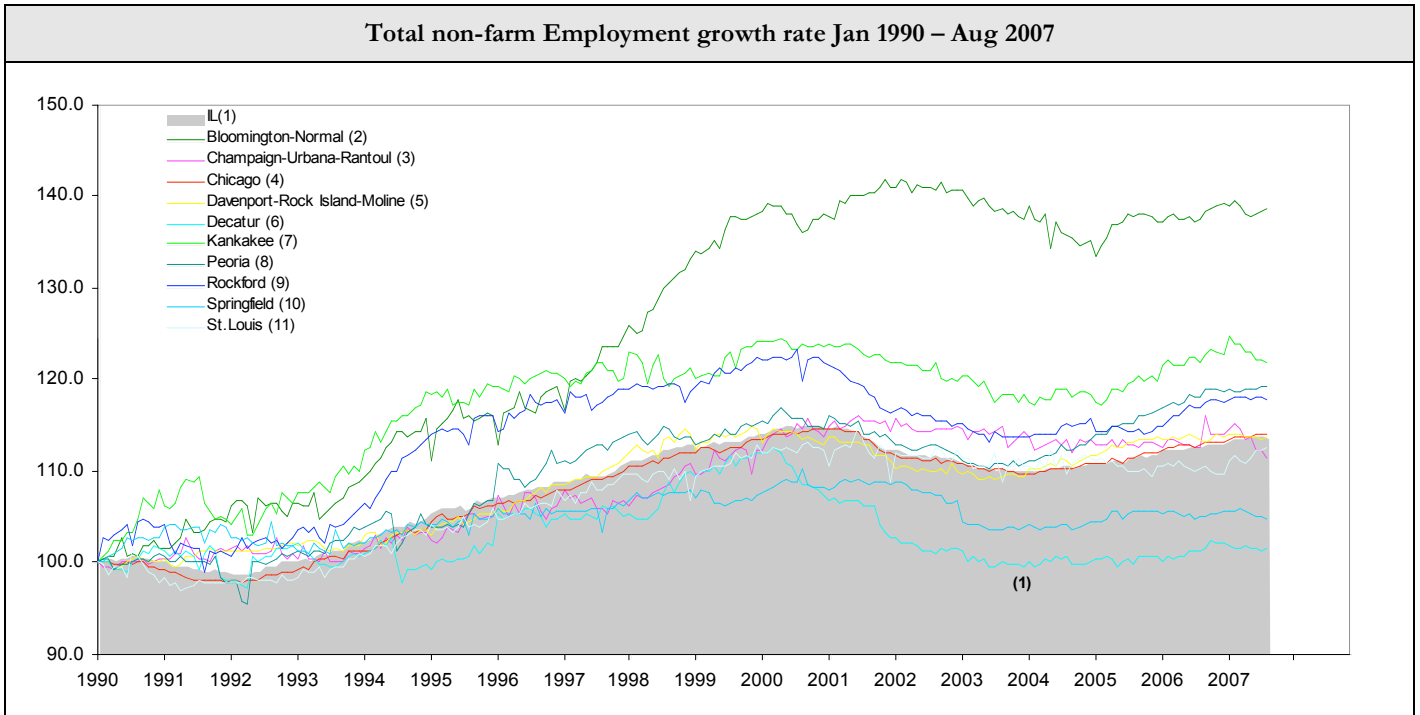
Talking Points

MSA League Tables

- The three worst performers in July came to occupy the top three positions in August. Among them Decatur made the biggest jump of the month by moving from 9th to the 1st position.
- Metro-east improved from the 8th to 2nd position and Davenport- Rock Island –Moline from 10th to 3rd position.
- Chicago has retained its 6th position from July to August.
- All the top five performers in July experienced a decline in their position in August. Among them Springfield and Champaign-Urbana-Rantoul faced the deepest fall, each of them dropping by six ranks from 3rd to 9th and 4th to 10th respectively.
- Bloomington-Normal and Peoria, the top two performers in July, slipped to 4th and 5th position respectively. Rockford and Kankakee, similarly, dropped from 5th and 7th position to 7th and 8th position respectively.
- In the league table for the last 12 months growth, Metro-East, the top performer in July retained its position, whereas Chicago dropped to 3rd from the 2nd position.
- The 2nd position in the August table is taken by Peoria which was in the 4th position. Davenport-Rock Island-Moline also had a similar rise of rank by moving from 10th to 7th position.
- Three other MSAs that gained in position all jumped by one position. They are Bloomington-Normal (5th to 4th), Decatur (7th to 6th) and Kankakee (9th to 8th).
- Springfield dropped the most from 6th to 9th position. Rockford (3rd to 5th) and Champaign-Urbana-Rantoul (8th to 10th) both dropped by two positions.

*MSA League Tables are based on revised employment data. For instances of equal growth rate for multiple MSAs ranks are decided based on change of growth rate from previous month.

Total non-farm Employment growth rate Jan 1990 – Aug 2007



Shaded area on above chart represents Illinois growth.

MSA DESCRIPTION: **Bloomington-Normal (B-N):** McLean Co. **Champaign-Urbana (C-U-R):** Champaign Co., Ford Co. & Piatt Co. **Chicago:** Cook Co. IL, DeKalb Co. IL, DuPage Co. IL, Grundy Co. IL, Kane Co. IL, Kendall Co. IL, Lake Co. IL, McHenry Co. IL, Will Co. IL & Kenosha Co. WI **Davenport-Moline-Rock Island (D-R-M):** Henry Co. IL, Mercer Co. IL, Rock Island Co. IL & Scott Co. IA **Decatur:** Macon Co. **Kankakee:** Kankakee Co. **Metro-East:** Bond Co., Calhoun Co., Clinton Co., Jersey Co., Macoupin Co., Madison Co., Monroe Co. & St. Clair Co. **Peoria-Pekin (Peoria):** Marshall Co., Peoria Co., Stark Co., Tazewell Co. & Woodford Co. **Rockford:** Boone Co. & Winnebago Co. **Springfield:** Menard Co. & Sangamon Co.

The MSA data (unless noted) were seasonally adjusted to be consistent with state totals.

ABOUT: The Illinois Coalition for Jobs, Growth & Prosperity is a not-for-profit 501-c-4 organization. Coalition founding members include the Chicagoland Chamber of Commerce, the Illinois Business Roundtable, the Illinois Civil Justice League, the Illinois Manufacturers' Association, and the Illinois State Chamber of Commerce. Established to provide Illinois voters with information about government-related issues that have a direct effect on jobs, the Coalition represents firms employing more than a million Illinois workers.