

Illinois Job Index: MSA Report



Illinois Coalition for Jobs, Growth & Prosperity

Release
8/27/2008

data
Jan 1990 / July 2008

Issue
11.8

www.real.uiuc.edu

As a companion to the August 2008 Illinois Job Index that reports a **negative** Rating, this MSA Report provides a localized picture on Illinois job growth and allows for comparisons between local economies, Illinois, the Nation and the Rest of the Midwest.

August 2008	Total non-farm employment	June 2008 – July 2008		Last 12 months	
		Growth Rate (%)	Number of Jobs	Growth Rate (%)	Number of Jobs
	Illinois non-Metro (Rural)	-2.90	-15,400	+0.12	+600
	Illinois non-Chicago (Downstate)	-0.71	-12,200	-0.12	-2,000
	Illinois Metro	+0.10	+5,700	-0.01	-700
	Illinois	-0.16	-9,700	0.00	-100
	Rest of Midwest (RMW)	-0.22	-43,700	-0.49	-97,100
	Nation	-0.04	-51,000	-0.05	-67,000

The Illinois Coalition for Jobs, Growth & Prosperity publishes the monthly Illinois Job Index and MSA Report as tools for elected officials, policy leaders and the public. We can better understand the Illinois economy and business climate by comparing and measuring Illinois employment growth rates against those of the Rest of the Midwest (RMW: Indiana, Iowa, Michigan, Missouri, Ohio and Wisconsin) and the Nation. Data and analysis is provided by the Illinois Economic Observatory / Regional Economics Applications Laboratory, University of Illinois. The MSA data (unless noted) were seasonally adjusted to be consistent with state totals.

Talking Points

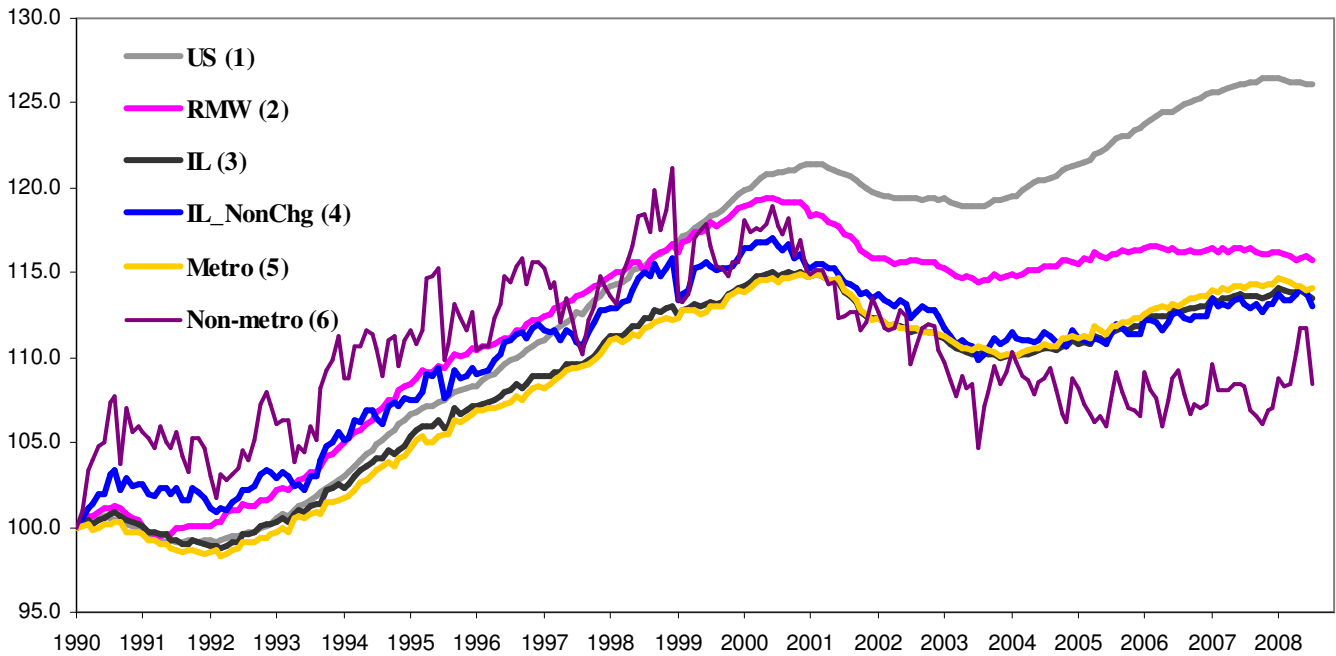
State, Downstate & Metro

- Illinois lost 9,700 jobs at a rate of -0.16% in July, compared to a revised loss of 10,700 jobs in June. This is the fourth time in 2008 that Illinois posted negative growth.
- While Illinois posted negative overall growth in July, Chicago and almost all Metro areas posted positive ratings. This is the second time in 2008 that Metro areas have had positive growth.
- Illinois Non-metro lost 15,400 jobs at -2.90% in July, which contrasts with the four months of positive growth from March to June. In contrast, Metro posted a 0.10% growth in July by adding 5,700 jobs, compared to five months of negative growth from February to June.
- After five months of negative ratings, Chicago added 2,500 jobs at 0.06% in July. Downstate, on the other hand, lost 12,200 jobs at -0.71% in July, compared to a revised loss of 3,900 jobs at -0.23 in June.
- Over the last 12-month period, Illinois registered a 0.00% growth by losing 100 jobs.
- In terms of the 12-month aggregated account, Metro posted a negative -0.01% growth by losing 700 jobs whereas Non-Metro added 600 jobs at 0.12%. Chicago added 1,900 jobs at 0.04% whereas Downstate lost 2,000 jobs at -0.12%.

MSA page (2-4)

- Illinois Metro posted a positive growth rate of 0.10% by adding 5,700 jobs in July. Within the MSAs, eight areas posted positive growth, one posted negative growth, and one remained the same.
- In terms of growth performance, three MSAs posted a net improvement from June to July, six declined, and one remained the same. The biggest gains in July when compared with June were for Champaign-Urbana-Rantoul (-2.14% to 1.64%), Rockford (-0.31% to 0.31%), and Decatur (-0.36% to 0.18%).
- Eight among the ten MSAs posted net gains in July. The most significant gains were by Chicago with 2,500 jobs at 0.06% growth and Champaign-Urbana with 1,800 jobs at 1.64% growth.
- Over the last 12-month period, Kankakee grew the fastest at 2.75% by adding 1,200 jobs, followed by Peoria at 0.96% by adding 1,800 jobs. Between the two MSAs that posted negative growth rates, Metro-East had the biggest loss of 6,700 jobs at -2.76%.

Total non-farm Employment growth Jan 1990 – Jul 2008



Talking Points

**State,
Downstate &
Metro**

- While Illinois' average growth was 0.09% in 2006 and 0.05% in 2007, the average for 2008 to date is -0.02%.
- Over the last 12-month period, the average growth rate for Metro was 0.00% and for Non-metro it was 0.02%.
- Different from the aggregate trend since January 1990, Illinois did better than the RMW in terms of yearly aggregated trend both in 2006 and 2007. The 2008 average through July is also in favor of Illinois.
- Downstate registered a -0.01% average growth rate over the last 12-month period compared to an average of 0.09% gain in 2006 and 0.05% growth in 2007.

By MSA

Total non-farm employment Seasonally adjusted unless noted*	Jun 2008 –Jul 2008			Last 12 months	
	Change compared to Illinois	Growth Rate %	Number Of Jobs	Growth Rate %	Number of Jobs
Bloomington-Normal (B-N)	+	0.33	300	0.77	700
Champaign-Urbana (C-U-R)	+	1.64	1,800	-0.54	-600
Chicago	+	0.06	2,500	0.04	1,900
Davenport-Rock Island-Moline (D-R-M)	+	-0.05	-100	0.21	400
Decatur	+	0.18	100	0.54	300
Kankakee	+	0.67	300	2.75	1,200
Peoria	+	0.05	100	0.96	1,800
Rockford	+	0.31	500	0.06	100
Springfield	+	0.18	200	0.18	200
Metro-East*	+	0.00	0	-2.76	-6,700
Illinois		-0.16	-9,700	0.00	-100

MSA League Tables*: Non-farm Employment Growth Rate

Monthly growth:

Rank	June 2008	July 2008	Rank	Change**
1	Bloomington-Normal (0%)	Champaign-Urbana-Rantoul (1.64%)	1	↑ (+9)
2	Kankakee (0%)	Kankakee (0.67%)	2	↔ (0)
3	Springfield (0%)	Bloomington-Normal (0.33%)	3	↓ (-2)
4	Davenport-Rock Island-Moline (-0.11%)	Rockford (0.31%)	4	↑ (+4)
5	Peoria (-0.11%)	Decatur (0.18%)	5	↑ (+4)
6	Chicago (-0.16%)	Springfield (0.18%)	6	↓ (-3)
7	Metro-East (-0.21%)	Chicago (0.06%)	7	↓ (-1)
8	Rockford (-0.31%)	Peoria (0.05%)	8	↓ (-3)
9	Decatur (-0.36%)	Metro-East (0%)	9	↓ (-2)
10	Champaign-Urbana-Rantoul (-2.14%)	Davenport-Rock Island-Moline (-0.05%)	10	↓ (-6)

Growth over last 12 months:

Rank	June 2008	July 2008	Rank	Change**
1	Kankakee (1.83%)	Kankakee (2.75%)	1	↔ (0)
2	Peoria (0.21%)	Peoria (0.96%)	2	↔ (0)
3	Decatur (0.18%)	Bloomington-Normal (0.77%)	3	↑ (+1)
4	Bloomington-Normal (0.11%)	Decatur (0.54%)	4	↓ (-1)
5	Chicago (-0.04%)	Davenport-Rock Island-Moline (0.21%)	5	↑ (+1)
6	Davenport-Rock Island-Moline (-0.11%)	Springfield (0.18%)	6	↑ (+1)
7	Springfield (-0.36%)	Rockford (0.06%)	7	↑ (+1)
8	Rockford (-0.99%)	Chicago (0.04%)	8	↓ (-3)
9	Champaign-Urbana-Rantoul (-2.49%)	Champaign-Urbana-Rantoul (-0.54%)	9	↔ (0)
10	Metro-East (-2.8%)	Metro-East (-2.76%)	10	↔ (0)

Talking Points

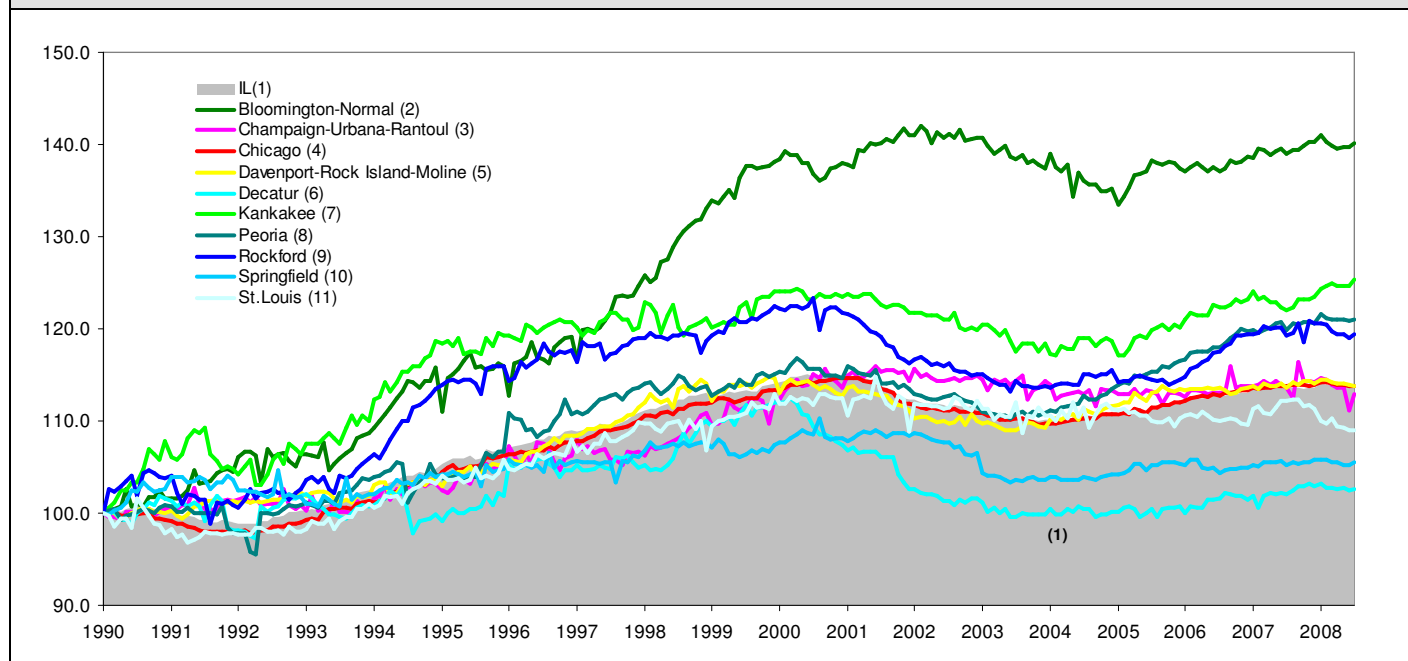
MSA League Tables

- The most remarkable upward move in July is by Champaign-Urbana (10th to 1st) which moved up by 9 spots.
- Rockford (8th to 4th) and Decatur (9th to 5th) made significant gains in terms of the rank from June.
- Davenport-Rock Island-Moline experienced the deepest fall (4th to 10th) in July.
- Bloomington-Normal, Springfield, Chicago, Peoria, and Metro-East all lost ground in July.
- In the 12-months growth league table, upward moves were recorded for Bloomington-Normal (4th to 3rd), Davenport-Rock Island-Moline (6th to 5th), Springfield (7th to 6th), and Rockford (8th to 7th).
- Kankakee and Peoria are still on top with number 1 and 2 rankings for MSAs whereas Champaign-Urbana and Metro-East are still in the last two positions.
- Chicago experienced the greatest fall (5th to 8th) in July, followed by Decatur (3rd to 4th).

*MSA League Tables are based on revised employment data. For instances of equal growth rate for multiple MSAs ranks are decided based on change of growth rate from previous month.

**Changes indicate change in rank position compared to previous month and correspond to the MSA at the right column. Rise is indicated by a '↑' and decline by a '↓' and for an unchanged position a '↔' is used. Figures in parenthesis indicate relative rank change from previous month.

Total non-farm Employment growth rate Jan 1990 – Jul 2008



Shaded area on above chart represents Illinois growth.

MSA DESCRIPTION: **Bloomington-Normal (B-N):** McLean Co. **Champaign-Urbana (C-U-R):** Champaign Co., Ford Co. & Piatt Co. **Chicago:** Cook Co. IL, DeKalb Co. IL, DuPage Co. IL, Grundy Co. IL, Kane Co. IL, Kendall Co. IL, Lake Co. IL, McHenry Co. IL, Will Co. IL & Kenosha Co. WI **Davenport-Moline-Rock Island (D-R-M):** Henry Co. IL, Mercer Co. IL, Rock Island Co. IL & Scott Co. IA **Decatur:** Macon Co. **Kankakee:** Kankakee Co. **Metro-East:** Bond Co., Calhoun Co., Clinton Co., Jersey Co., Macoupin Co., Madison Co., Monroe Co. & St. Clair Co. **Peoria-Pekin (Peoria):** Marshall Co., Peoria Co., Stark Co., Tazewell Co. & Woodford Co. **Rockford:** Boone Co. & Winnebago Co. **Springfield:** Menard Co. & Sangamon Co.

The MSA data (unless noted) were seasonally adjusted to be consistent with state totals.

ABOUT: The Illinois Coalition for Jobs, Growth & Prosperity is a not-for-profit 501-c-4 organization. Coalition founding members include the Chicagoland Chamber of Commerce, the Illinois Business Roundtable, the Illinois Civil Justice League, the Illinois Manufacturers' Association, and the Illinois State Chamber of Commerce. Established to provide Illinois voters with information about government-related issues that have a direct effect on jobs, the Coalition represents firms employing more than a million Illinois workers.