

Illinois Job Index: MSA Report



Illinois Coalition for Jobs, Growth & Prosperity

Release 3/19/2008	data Jan 1990 / Jan 2008	Issue 11.2	www.jobstillinois.us
-----------------------------	------------------------------------	----------------------	-----------------------------

As a companion to the February 2008 Illinois Job Index that reports a **Positive** Rating, this MSA Report provides a localized picture on Illinois job growth and allows for comparisons between local economies, Illinois, Nation and Rest of the Midwest.

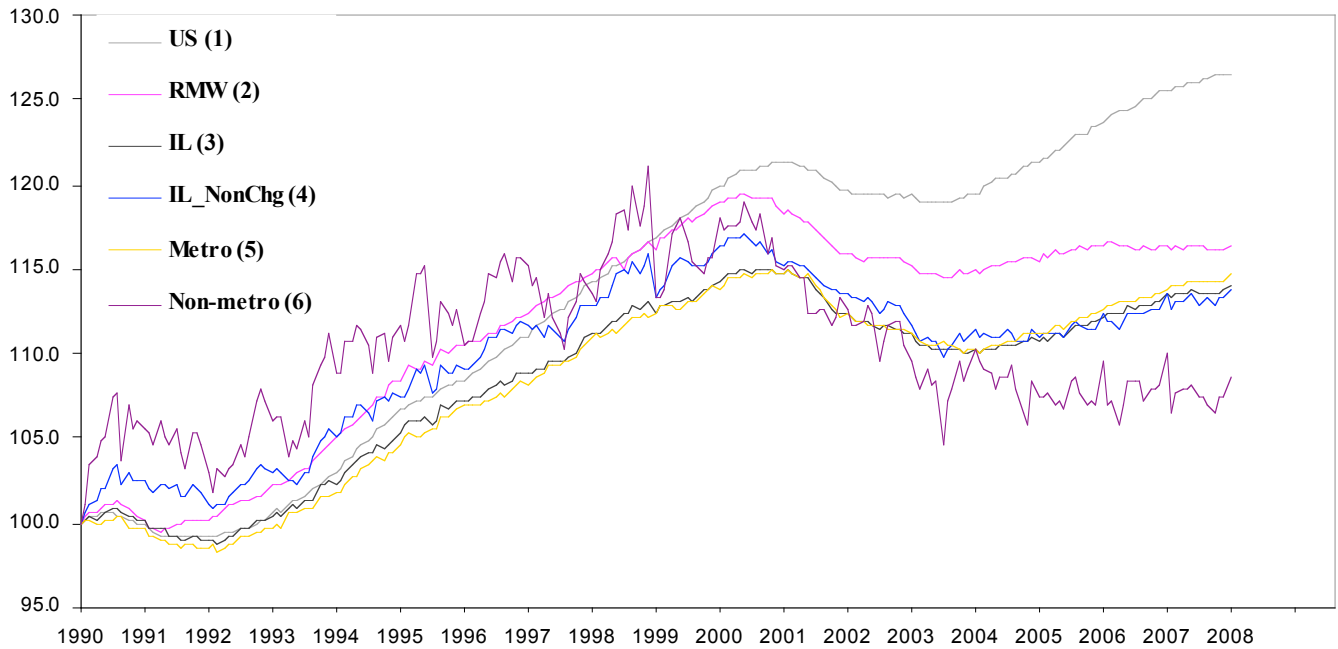
February 2008	Total non-farm employment	Dec 2007 – Jan 2008		Last 12 months	
		Growth Rate (%)	Number of Jobs	Growth Rate (%)	Number of Jobs
	Illinois non-Metro (Rural)	+1.12	+5,700	-1.38	-7,200
	Illinois non-Chicago (Downstate)	+0.42	+7,100	+0.02	+400
	Illinois Metro	+0.30	+16,200	+0.68	+36,900
	Illinois	+0.37	+21,900	+0.50	+29,700
	Rest of Midwest (RMW)	+0.11	+21,800	-0.13	-26,300
	Nation	-0.02	-22,000	+0.69	+948,000

The Illinois Coalition for Jobs, Growth & Prosperity publishes the monthly Illinois Job Index and MSA Report as tools for elected officials, policy leaders and the public. We can better understand the Illinois economy and business climate by comparing and measuring Illinois employment growth rates against those of the Rest of the Midwest (RMW: Indiana, Iowa, Michigan, Missouri, Ohio and Wisconsin) and the Nation. Data and analysis is provided by the Illinois Economic Observatory / Regional Economics Applications Laboratory, University of Illinois. The MSA data (unless noted) were seasonally adjusted to be consistent with state totals.

Talking Points

State, Downstate & Metro	<ul style="list-style-type: none"> Illinois added 21,900 jobs at 0.37% in January 2008, the highest number of monthly jobs added after January 2007. Like the overall performance of Illinois which was positive, the major geographic divisions, Chicago-Downstate or Metro-Non-Metro all registered positive ratings in January. However, these divisions as well as the metro areas vary among themselves in performance. Downstate added 7,100 jobs at 0.42% in January, up from a revised 1,300 loss at -0.08% in December 2007. Chicago, on the other hand added 14,800 jobs at 0.35%, up from a revised 4,100 gain in December at 0.10%. This is the largest number of jobs added by Chicago after February 2006. Illinois Metro posted a positive growth of 16,200 jobs in January at 0.30% compared to a revised 2,700 gain in December. Non-metro by contrast added 5,700 jobs at 1.12% compared to a 100 revised gain in December. The January growth for Metro and Non-metro is the highest for them since February 2006 and January 2007 respectively. Over the last 12-months, however, Illinois registered a 0.50% growth by adding 29,700 jobs. In terms 12-months aggregated account, Metro posted a 0.68% growth by adding 36,900 jobs whereas Non-metro lost 7,100 jobs at -1.38% during the same period. Chicago, on the other hand added 29,300 jobs at 0.69% as opposed to 400 jobs added by Downstate at 0.02%.
MSA page (2-4)	<ul style="list-style-type: none"> Illinois Metro posted 0.30% growth in January by adding 16,200 jobs. All MSAs in Illinois except Metro-East posted positive growth in January. Chicago added the highest number of 14,800 jobs followed by Peoria which added 1,600 jobs. In terms of growth rates, all other MSAs except Springfield and Metro-East posted improvements from December 2007. Best performance gain compared to December was recorded for Peoria (-0.05% to 0.85%) followed by Davenport-Rock Island-Moline (-0.21% to 0.37%) and Bloomington-Normal (0.11% to 0.65%). Among the MSAs, only Metro-East lost jobs (2,800 at -1.16%). This is the highest number of jobs lost by Metro-East since August 2004. Over the last 12-months, Bloomington-Normal grew fastest at 1.99% by adding 1,800 Jobs followed by Peoria which added 2,800 jobs at 1.50%. By losing 2,500 jobs at -1.04% over last 12-month, Metro-East remains the only MSA which registered net losses. Chicago contributed the highest number of jobs (29,300) in that period at 1.50%. Peoria and Rockford were the 2nd and 3rd largest contributor by adding 2,800 (at 1.50%) and 1,800 (at 1.12%) jobs respectively.

Total non-farm Employment growth rate Jan 1990 – Jan 2008



Talking Points

State, Downstate & Metro

- While Illinois grew slower at 0.05% per month during 2007 compared to 0.09% in 2006, the growth in January 2008 is the highest after January 2007.
- The average growth rate for Metro over the last 12-month period was 0.06%. In contrast, non-metro recorded a net -0.11% average loss during the same period though marked with noticeable fluctuations.
- Contrary to the aggregate trend since January 1990, Illinois did better than the RMW in terms of yearly aggregated trend both in 2006 and 2007. In January 2008, the gap their job indices was the minimum since December 1993.
- Downstate registered a 0% average growth rate over the last 12-month compared to average 0.09% gain in 2006.

By MSA

Total non-farm employment Seasonally adjusted unless noted*	Dec 2007 –Jan 2008			Last 12 months	
	Change compared to Illinois	Growth Rate %	Number Of Jobs	Growth Rate %	Number of Jobs
Bloomington-Normal (B-N)	+	0.65	600	1.99	1,800
Champaign-Urbana (C-U-R)	-	0.35	400	0.71	800
Chicago	-	0.35	14,800	0.69	29,300
Davenport-Rock Island-Moline (D-R-M)	+	0.37	700	0.74	1400
Decatur	-	0.18	100	1.27	700
Kankakee	+	0.68	300	0.45	200
Peoria	+	0.85	1,600	1.50	2,800
Rockford	-	0.25	400	1.12	1,800
Springfield	-	0.09	100	0.54	600
Metro-East*	-	-1.16	-2800	-1.04	-2,500
Illinois		0.37	21,900	0.50	29,700

MSA League Tables*: Non-farm Employment Growth Rate

Monthly growth:

Rank	December 2007	January 2008	Rank	Change**
1	Kankakee (0.23%)	Peoria (0.85%)	1	↑ (+4)
2	Springfield (0.18%)	Kankakee (0.68%)	2	↓ (-1)
3	Bloomington-Normal (0.11%)	Bloomington-Normal (0.65%)	3	← (0)
4	Chicago (0.10%)	Davenport-Rock Island-Moline (0.37%)	4	↑ (+5)
5	Peoria (-0.05%)	Champaign-Urbana-Rantoul (0.35%)	5	↑ (+1)
6	Champaign-Urbana-Rantoul (-0.18%)	Chicago (0.35%)	6	↓ (-2)
7	Decatur (-0.18%)	Rockford (0.25%)	7	↑ (+1)
8	Rockford (-0.18%)	Decatur (0.18%)	8	↓ (-1)
9	Davenport-Rock Island-Moline (-0.21%)	Springfield (0.09%)	9	↓ (-7)
10	Metro-East (-0.29%)	Metro-East (-1.16%)	10	← (0)

Growth over last 12-months:

Rank	December 2007	January 2008	Rank	Change**
1	Metro-East (1.73%)	Bloomington-Normal (1.99%)	1	↑ (+3)
2	Decatur (1.46%)	Peoria (1.50%)	2	↑ (+4)
3	Bloomington-Normal (1.21%)	Decatur (1.27%)	3	↓ (-1)
4	Rockford (0.93%)	Rockford (1.12%)	4	← (0)
5	Springfield (0.90%)	Davenport-Rock Island-Moline (0.74%)	5	↑ (+3)
6	Peoria (0.75%)	Champaign-Urbana-Rantoul (0.71%)	6	↑ (+4)
7	Chicago (0.58%)	Chicago (0.69%)	7	← (0)
8	Davenport-Rock Island-Moline (0.48%)	Springfield (0.54%)	8	↓ (-3)
9	Kankakee (0.45%)	Kankakee (0.45%)	9	← (0)
10	Champaign-Urbana-Rantoul (0.45%)	Metro-East (-1.04%)	10	↓ (-9)

Talking Points

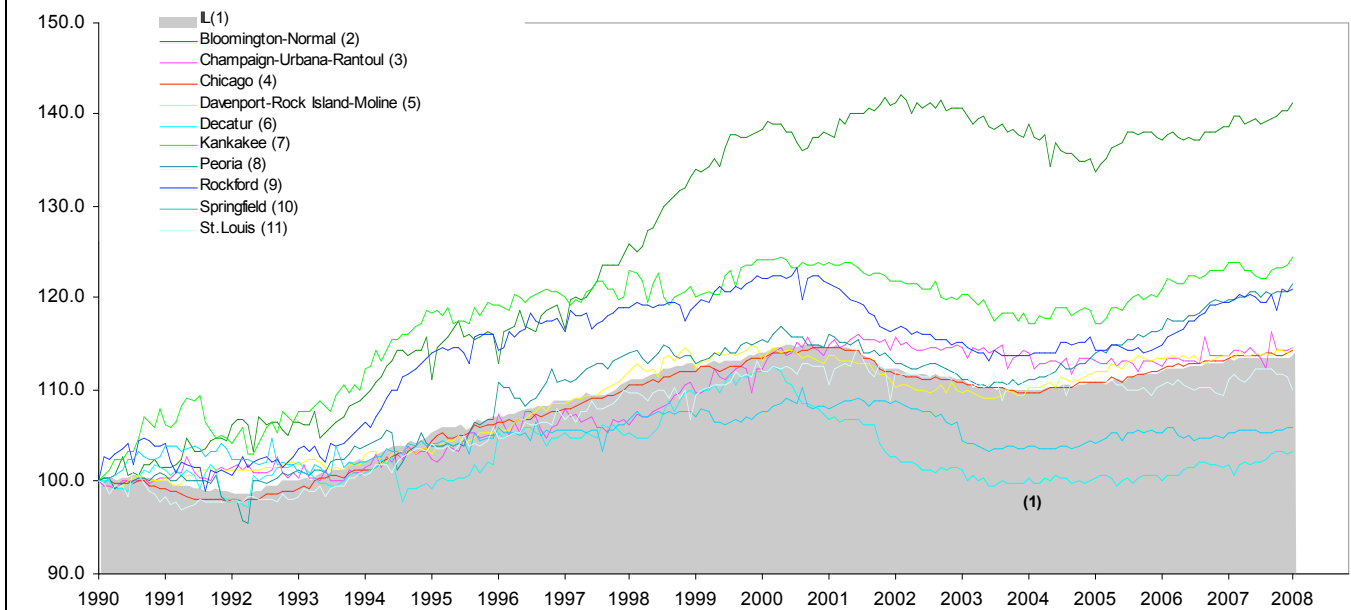
MSA League Tables

- The most remarkable upward move in January is that of Davenport Rock Island-Moline from 9th and 4th.
- Peoria grabbed the first position in January up from the fifth position in December.
- Champaign-Urbana-Rantoul (6th to 5th) and Rockford (8th to 7th) each gained by one rank from previous month whereas Bloomington-Normal and Metro-East could not change their rank.
- The deepest fall in January was experienced by Springfield which slipped down to 9th position from 2nd. Chicago fell to the 6th position down from 4th.
- Among others Decatur and Kankakee also lost ground in January.
- In the league table for the last 12 months growth, Metro-East the best performer in December faced the deepest fall down to 10th position in January. Rockford and Kankakee who were in 4th and 9th position could not change their rank in January.
- Peoria (6th to 4th) and Champaign-Urbana-Rantoul (10th to 6th) posted the most notable upward move in January in the 12-months growth league table.
- Bloomington -Normal (3rd to 1st) and Davenport-Rock Island-Moline (8th to 5th) both had an increase in their position in January in terms of 12-months aggregated growth rate.

*MSA League Tables are based on revised employment data. For instances of equal growth rate for multiple MSAs ranks are decided based on change of growth rate from previous month.

**Changes indicate change in rank position compared to previous month. Rise is indicated by a '↑' and decline by a '↓' and for an unchanged position a '←' is used. Figures in parenthesis indicate relative rank change from previous month.

Total non-farm Employment growth rate Jan 1990 – Dec 2007



Shaded area on above chart represents Illinois growth.

MSA DESCRIPTION: **Bloomington-Normal (B-N)**: McLean Co. **Champaign-Urbana (C-U-R)**: Champaign Co., Ford Co. & Piatt Co. **Chicago**: Cook Co. IL, DeKalb Co. IL, DuPage Co. IL, Grundy Co. IL, Kane Co. IL, Kendall Co. IL, Lake Co. IL, McHenry Co. IL, Will Co. IL & Kenosha Co. WI **Davenport-Moline-Rock Island (D-R-M)**: Henry Co. IL, Mercer Co. IL, Rock Island Co. IL & Scott Co. IA **Decatur**: Macon Co. **Kankakee**: Kankakee Co. **Metro-East**: Bond Co., Calhoun Co., Clinton Co., Jersey Co., Macoupin Co., Madison Co., Monroe Co. & St. Clair Co. **Peoria-Pekin (Peoria)**: Marshall Co., Peoria Co., Stark Co., Tazewell Co. & Woodford Co. **Rockford**: Boone Co. & Winnebago Co. **Springfield**: Menard Co. & Sangamon Co.

The MSA data (unless noted) were seasonally adjusted to be consistent with state totals.

ABOUT: The Illinois Coalition for Jobs, Growth & Prosperity is a not-for-profit 501-c-4 organization. Coalition founding members include the Chicagoland Chamber of Commerce, the Illinois Business Roundtable, the Illinois Civil Justice League, the Illinois Manufacturers' Association, and the Illinois State Chamber of Commerce. Established to provide Illinois voters with information about government-related issues that have a direct effect on jobs, the Coalition represents firms employing more than a million Illinois workers.