

Illinois Job Index: MSA Report



Illinois Coalition for Jobs, Growth & Prosperity

Release
1/24/2008

data
Jan 1990 / Dec 2007

Issue
11.1

www.jobsillinois.us

As a companion to the December 2007 Illinois Job Index that reports a **Negative** Rating, this MSA Report provides a localized picture on Illinois job growth and allows for comparisons between local economies, Illinois, Nation and Rest of the Midwest.

January 2008	Total non-farm employment	Nov 2007 – Dec 2007		Last 12 months	
		Growth Rate (%)	Number of Jobs	Growth Rate (%)	Number of Jobs
	Illinois non-Metro (Rural)	+1.40	+7,000	-0.96	-4,900
	Illinois non-Chicago (Downstate)	+0.37	+6,300	+0.18	+3,000
	Illinois Metro	-0.03	-1,800	+0.86	+46,800
	Illinois	+0.09	+5,200	+0.70	+41,900
	Rest of Midwest (RMW)	-0.01	-1,600	-0.19	-37,800
	Nation	+0.01	+18,000	+0.97	+1,328,000

The Illinois Coalition for Jobs, Growth & Prosperity publishes the monthly Illinois Job Index and MSA Report as tools for elected officials, policy leaders and the public. We can better understand the Illinois economy and business climate by comparing and measuring Illinois employment growth rates against those of the Rest of the Midwest (RMW: Indiana, Iowa, Michigan, Missouri, Ohio and Wisconsin) and the Nation. Data and analysis is provided by the Illinois Economic Observatory / Regional Economics Applications Laboratory, University of Illinois. The MSA data (unless noted) were seasonally adjusted to be consistent with state totals.

Talking Points

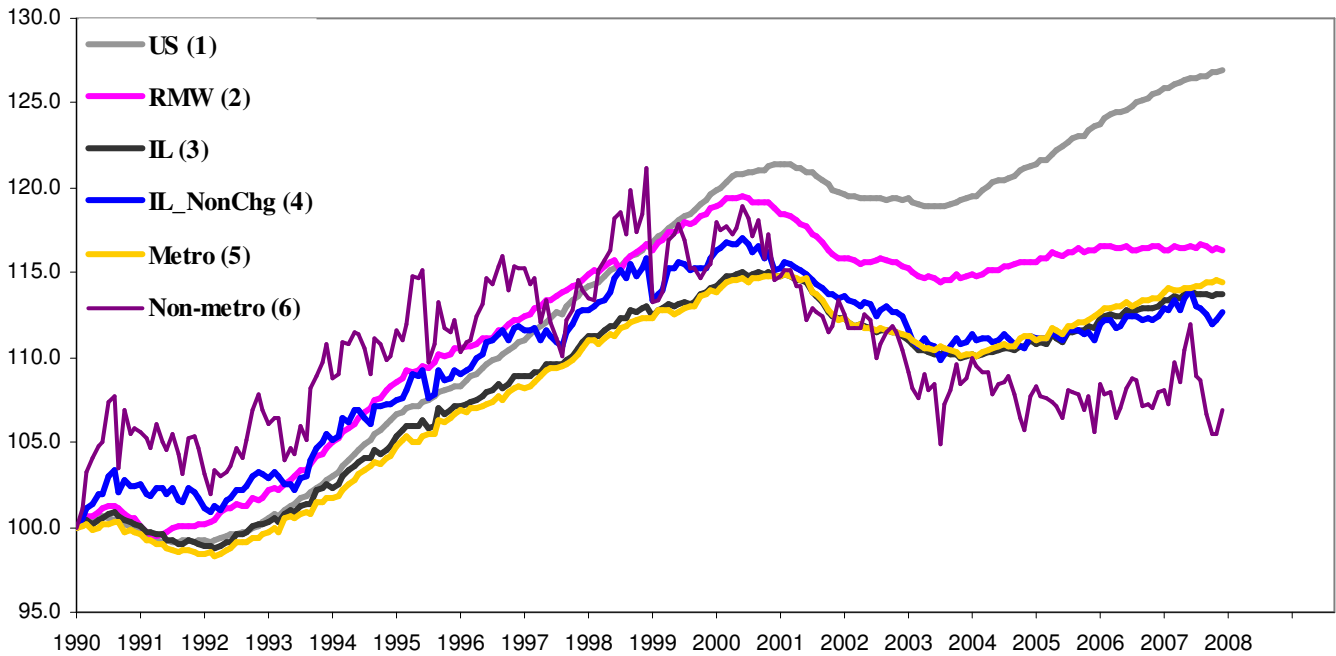
State, Downstate & Metro

- Illinois added 5,200 jobs at 0.09% in December 2007, the highest number of jobs added after June 2007.
- Like the overall performance of Illinois which was positive, the major geographic divisions, Downstate and Non-Metro registered positive ratings while Chicago and Metro posted negative growth. Different metro areas however, showed mixed performance.
- Downstate added 6,300 jobs at 0.37% in December, a positive rating for second month after four months of negative rating since July 2007. Chicago, on the other hand lost 1,100 jobs at -0.03%, down from a revised 500 gain in November at 0.01%. This is the first time after October 2006 that Chicago registered negative growth.
- Illinois Metro lost 1,800 jobs in December at -0.03% compared to a revised 4,500 gain in November. Non-metro by contrast added 7,000 jobs at 1.40% compared to a 200 revised loss in November. However, over entire 2007 non-metro posted seven negative ratings whereas metro posted negative ratings only in March and December.
- Over the last 12-months, however, Illinois registered a 0.70% growth rate by adding 41,900 jobs.
- Over entire 2007, Metro grew by 0.86% by adding 46,800 jobs whereas Non-metro lost 4,900 jobs at -0.96% in the same period. Chicago, on the other hand added 38,900 jobs at 0.91% as opposed to 3,000 jobs added by Non-Chicago at 0.18%.

MSA page (2-4)

- Illinois Metro posted a negative 0.03% growth in December by losing 1,800 jobs. Among MSAs in Illinois two registered net gain, five of the rest lost jobs and remaining three posted zero growth. Bloomington-Normal and Davenport-Rock Island-Moline each added highest 100 jobs in this month.
- In terms of growth rates none of the MSAs could improve their performance in December compared to previous month. Bloomington-Normal is the only MSA which has maintained the growth rate. All other MSA experienced a decline in rate of job growth. Chicago lost the highest 1,100 jobs at -0.03% followed by Metro-east which lost 400 jobs at -0.17% in December.
- Over entire 2007, Metro-East grew fastest at 1.73% by adding 4,100 Jobs. Chicago while contributing the highest 38,900 jobs in that period remained the second fastest growing MSA with a 0.91% overall growth. Only Champaign-Urbana-Rantoul registered net losses over 2007. Metro-East and Peoria were the second and third largest contributor to Illinois payroll by adding 4,400 and 1,600 jobs over last 12 months.

Total non-farm Employment growth rate Jan 1990 – Dec 2007



Talking Points

State, Downstate & Metro

- For Illinois, the average monthly growth rate over 2007 thru December was 0.06%, which is much lower than the 2006 average of 0.09%.
- The average growth rate for Metro in 2007 of 0.07% is slightly below 2006 average of 0.08%. In contrast, non-metro recorded a net -0.07% average loss in 2007 compared to a 0.19% average growth in 2006.
- Unlike the overall trend since January 1990 Illinois did better than the RMW in terms of yearly aggregated trend both in 2006 and 2007.
- As regards the trend for Downstate, in 2007 a 0.02% average growth rate was recorded by the end of the year compared to average 0.11% gain in 2006.

By MSA

Total non-farm employment Seasonally adjusted unless noted*	Nov 2007 –Dec 2007			Last 12 months	
	Change compared to Illinois	Growth Rate %	Number Of Jobs	Growth Rate %	Number of Jobs
Bloomington-Normal (B-N)	+	0.11	100	0.44	400
Champaign-Urbana (C-U-R)	-	-0.09	-100	-0.27	-300
Chicago	-	-0.03	-1,100	0.91	38,900
Davenport-Rock Island-Moline (D-R-M)	-	0.05	100	0.74	1,400
Decatur	-	0	0	0.36	200
Kankakee	-	0	0	0.23	100
Peoria	-	-0.11	-200	0.87	1,600
Rockford	-	-0.13	-200	0.19	300
Springfield	-	0	0	0.09	100
Metro-East*	-	-0.17	-400	1.73	4,100
Illinois		0.09	5,200	0.70	41,900

MSA League Tables*: Non-farm Employment Growth Rate

Monthly growth:

Rank	November 2007	December 2007	Rank	Change**
1	Rockford (1.60%)	Bloomington-Normal (0.11%)	1	↑(+5)
2	Decatur (0.36%)	Davenport-Rock Island-Moline (0.05%)	2	↑(+5)
3	Kankakee (0.23%)	Decatur (0%)	3	↓(-1)
4	Metro-East (0.17%)	Kankakee (0%)	4	↓(-1)
5	Peoria (0.16%)	Springfield (0%)	5	↑(+3)
6	Bloomington-Normal (0.11%)	Chicago (-0.03%)	6	↑(+4)
7	Davenport-Rock Island-Moline (0.11%)	Champaign-Urbana-Rantoul (-0.09%)	7	↑(+2)
8	Springfield (0.09%)	Peoria (-0.11%)	8	↓(-3)
9	Champaign-Urbana-Rantoul (0.09%)	Rockford (-0.13%)	9	↓(-8)
10	Chicago (0.01%)	Metro-East (-0.17%)	10	↓(-6)

Growth over last 12-months:

Rank	November 2007	December 2007	Rank	Change**
1	Metro-East (1.85%)	Metro-East (1.73%)	1	←(0)
2	Chicago (0.97%)	Chicago (0.91%)	2	←(0)
3	Peoria (0.81%)	Peoria (0.87%)	3	←(0)
4	Bloomington-Normal (0.66%)	Davenport-Rock Island-Moline (0.74%)	4	↑(+1)
5	Davenport-Rock Island-Moline (0.58%)	Bloomington-Normal (0.44%)	5	↓(-1)
6	Kankakee (0.46%)	Decatur (0.36%)	6	↑(+2)
7	Springfield (0.45%)	Kankakee (0.23%)	7	↓(-1)
8	Decatur (.18%)	Rockford (0.19%)	8	↑(+1)
9	Rockford (-0.13%)	Springfield (0.09%)	9	↓(-2)
10	Champaign-Urbana-Rantoul (-0.18%)	Champaign-Urbana-Rantoul (-0.27%)	10	←(0)

Talking Points

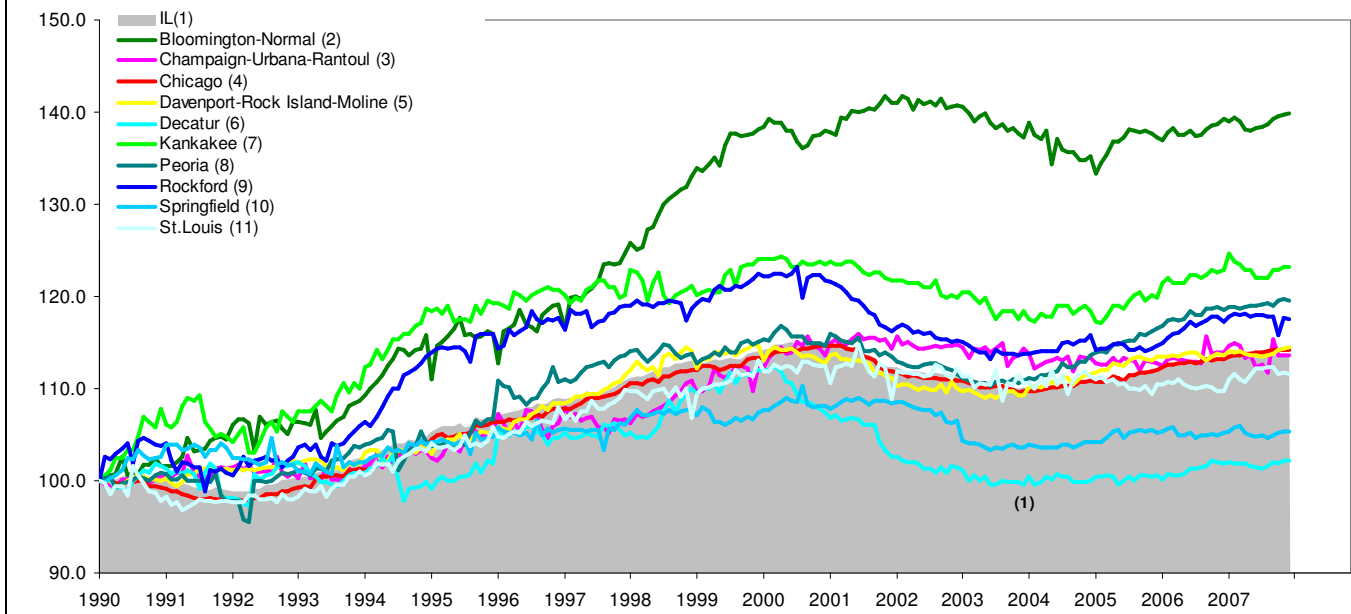
MSA League Tables

- The most remarkable upward move in December is by Bloomington-Normal and Davenport Rock Island-Moline from 6th and 7th to 1st and 2nd position respectively. None of the upward moves in December was accompanied by a faster growth from previous month.
- Springfield, Chicago and Champaign-Urbana grabbed 5th, 6th and 7th position from 8th, 10th and 9th position respectively.
- The deepest fall in December was experienced by Rockford which slipped down to 9th position from 1st. Metro-East fell to the 10th position down from 4th.
- Among others Decatur and Kankakee also lost ground in December.
- In the league table for the last 12 months growth, Metro-East, Chicago and Peoria the three best performers in November retained their position. Champaign-Urbana-Rantoul which was in the 10th also could not change position.
- Bloomington-Normal, Kankakee and Springfield slipped from 4th, 6th and 7th position to 5th, 7th and 9th position respectively.
- Davenport-Rock Island- Moline (5th to 4th), Decatur (8th to 6th) and Rockford (9th to 8th) all had a lift in their position in December in terms of 12-months aggregated growth rate.

*MSA League Tables are based on revised employment data. For instances of equal growth rate for multiple MSAs ranks are decided based on change of growth rate from previous month.

**Changes indicate change in rank position compared to previous month. Rise is indicated by a '↑' and decline by a '↓' and for an unchanged position a '←' is used. Figures in parenthesis indicate relative rank change from previous month.

Total non-farm Employment growth rate Jan 1990 – Dec 2007



Shaded area on above chart represents Illinois growth.

MSA DESCRIPTION: **Bloomington-Normal (B-N):** McLean Co. **Champaign-Urbana (C-U-R):** Champaign Co., Ford Co. & Piatt Co. **Chicago:** Cook Co. IL, DeKalb Co. IL, DuPage Co. IL, Grundy Co. IL, Kane Co. IL, Kendall Co. IL, Lake Co. IL, McHenry Co. IL, Will Co. IL & Kenosha Co. WI **Davenport-Moline-Rock Island (D-R-M):** Henry Co. IL, Mercer Co. IL, Rock Island Co. IL & Scott Co. IA **Decatur:** Macon Co. **Kankakee:** Kankakee Co. **Metro-East:** Bond Co., Calhoun Co., Clinton Co., Jersey Co., Macoupin Co., Madison Co., Monroe Co. & St. Clair Co. **Peoria-Pekin (Peoria):** Marshall Co., Peoria Co., Stark Co., Tazewell Co. & Woodford Co. **Rockford:** Boone Co. & Winnebago Co. **Springfield:** Menard Co. & Sangamon Co.

The MSA data (unless noted) were seasonally adjusted to be consistent with state totals.

ABOUT: The Illinois Coalition for Jobs, Growth & Prosperity is a not-for-profit 501-c-4 organization. Coalition founding members include the Chicagoland Chamber of Commerce, the Illinois Business Roundtable, the Illinois Civil Justice League, the Illinois Manufacturers' Association, and the Illinois State Chamber of Commerce. Established to provide Illinois voters with information about government-related issues that have a direct effect on jobs, the Coalition represents firms employing more than a million Illinois workers.