

# Illinois Job Index: MSA Report



## Illinois Coalition for Jobs, Growth & Prosperity

Release <b>5/28/2008</b>	data <b>Jan 1990 / Apr 2008</b>	Issue <b>11.5</b>	<b>www.jobsillinois.us</b>
-----------------------------	------------------------------------	----------------------	----------------------------

As a companion to the May 2008 Illinois Job Index that reports a **Neutral** Rating, this MSA Report provides a localized picture on Illinois job growth and allows for comparisons between local economies, Illinois, Nation and Rest of the Midwest.

May 2008	Total non-farm employment	Mar 2008 – Apr 2008		Last 12 months	
		Growth Rate (%)	Number of Jobs	Growth Rate (%)	Number of Jobs
	<b>Illinois non-Metro (Rural)</b>	+1.61	+8,300	+1.77	+9,100
	<b>Illinois non-Chicago (Downstate)</b>	+0.28	+4,700	+0.49	+8,300
	<b>Illinois Metro</b>	-0.16	-8,800	+0.22	+11,800
	<b>Illinois</b>	-0.01	-500	+0.35	+20,900
	<b>Rest of Midwest (RMW)</b>	-0.24	-47,300	-0.44	-87,700
	<b>Nation</b>	-0.01	-20,000	+0.34	+462,000

The Illinois Coalition for Jobs, Growth & Prosperity publishes the monthly Illinois Job Index and MSA Report as tools for elected officials, policy leaders and the public. We can better understand the Illinois economy and business climate by comparing and measuring Illinois employment growth rates against those of the Rest of the Midwest (RMW: Indiana, Iowa, Michigan, Missouri, Ohio and Wisconsin) and the Nation. Data and analysis is provided by the Illinois Economic Observatory / Regional Economics Applications Laboratory, University of Illinois. The MSA data (unless noted) were seasonally adjusted to be consistent with state totals.

## Talking Points

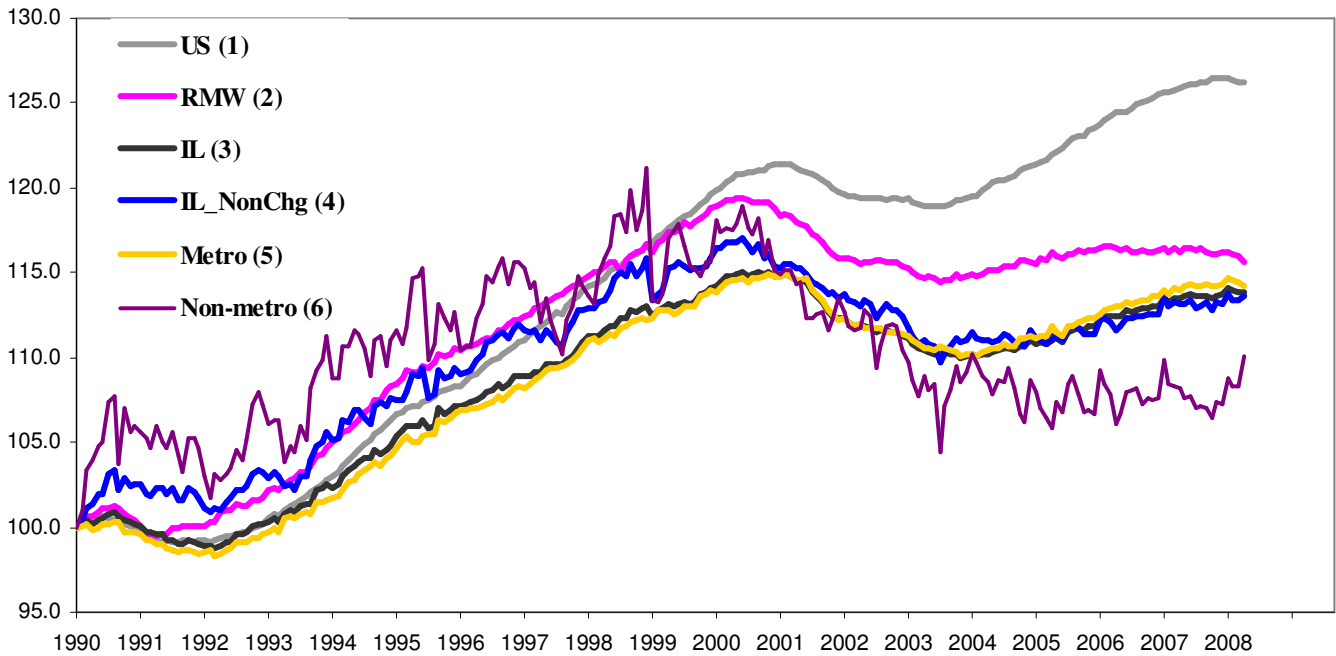
### State, Downstate & Metro

- Illinois lost 500 jobs at -0.01% in April 2008 improving from a 0.08% loss in March. This is for the third time in 2008 that Illinois posted negative growth.
- The major geographic divisions, Chicago-Downstate or Metro-Non-Metro registered mixed ratings in April. Metro areas also showed notable variation in performance.
- Downstate added 4,700 jobs at 0.28% in April, up from a revised 900 loss at -0.05% in March. Chicago, on the other hand lost 5,200 jobs at -0.12%, as opposed to a revised 4,200 loss in March at -0.10%. This is, however, the largest number of jobs lost by Chicago after June 2005.
- Illinois Metro, by losing 8,800 jobs at -0.16% down from a 5,300 revised loss in March posted a negative rating for third consecutive month, for the first time after June 2006. Non-metro, however, added 8,300 jobs at 1.77% compared to a revised 200 job loss in March.
- Over the last 12-months, Illinois registered a 0.35% growth by adding 20,900 jobs.
- In terms of the last 12-months, Metro posted a 0.22% growth by adding 11,800 jobs whereas Non-metro gained 9,100 jobs at 1.77% during the same period. Chicago, on the other hand added 12,600 jobs at 0.30% while Downstate added 8,300 jobs at 0.49%.

### MSA page (2-4)

- Illinois Metro posted a negative 0.16% growth in April by losing 8,800 jobs. Within the MSAs in Illinois, seven posted net loss and two posted zero growth. Springfield was the only MSA to post positive (100) job growth.
- In terms of growth rates, three MSAs posted net improvements from March, two remained same and the five remaining MSAs declined in performance. The best gain in April compared to March was recorded for Springfield (-0.36% to 0.09%) followed by Champaign-Urbana-Rantoul (-0.53% to 0.18%).
- While Springfield was the only MSA to post a positive growth by adding 100 jobs at 0.09%, Chicago lost the most jobs (5,200 at -0.12%). This is the highest number of jobs lost by Chicago since June 2005.
- Over the last 12-months, Kankakee grew fastest at 1.59% adding 700 jobs followed by Peoria which added 1,300 jobs at 0.69%. Three MSAs, posted net losses over last 12-month and Metro-East faced the highest 2,700 losses at -1.13% during that time. Chicago continues posting the highest number of jobs (12,600) in that period at 0.30%. This is, however, the smallest contribution by Chicago over any 12-month period since September 2004.

### Total non-farm Employment growth Jan 1990 – Apr 2008



### Talking Points

#### State, Downstate & Metro

- While Illinois grew at 0.05% and 0.09% on average during 2007 and 2006 respectively, the average for 2008 to date is 0.04%.
- Over the last 12-month period, Metro grew just 0.03%. In contrast, non-metro posted a 0.15% average gain during the same period though marked with noticeable fluctuations.
- Contrary to the aggregate trend since January 1990, Illinois did better than the RMW in terms of yearly aggregated trend both in 2006, 2007 and in 2008 till date and Illinois is gradually catching up with the RMW.
- Downstate, registered a 0.03% average growth rate over the last 12-month compared to average 0.09% gain in 2006 and 0.04% growth in 2007.

### By MSA

Total non-farm employment Seasonally adjusted unless noted*	Mar 2008 –Apr 2008			Last 12 months	
	Change compared to Illinois	Growth Rate %	Number Of Jobs	Growth Rate %	Number of Jobs
Bloomington-Normal (B-N)	-	-0.22	-200	0.44	400
Champaign-Urbana (C-U-R)	-	-0.18	-200	-0.27	-300
Chicago	-	-0.12	-5,200	0.30	12,600
Davenport-Rock Island-Moline (D-R-M)	-	-0.16	-300	0.37	700
Decatur	+	0	0	0.54	300
Kankakee	+	0	0	1.59	700
Peoria	-	-0.05	-100	0.69	1,300
Rockford	-	-0.68	-1,100	-0.80	-1,300
Springfield	+	0.09	100	0.09	100
Metro-East*	-	-0.75	-1,800	-1.13	-2,700
Illinois		-0.01	-500	0.35	20,900

# MSA League Tables\*: Non-farm Employment Growth Rate

## Monthly growth:

Rank	March 2008	April 2008	Rank	Change**
1	Metro-East (0.59%)	Springfield (0.09%)	1	↑ (+7)
2	Kankakee (0.22%)	Decatur (0%)	2	↑ (+1)
3	Decatur (0%)	Kankakee (0%)	3	↓ (- 1)
4	Peoria (0%)	Peoria (-0.05%)	4	← (0)
5	Chicago (-0.1%)	Chicago (-0.12%)	5	← (0)
6	Davenport-Rock Island-Moline (-0.16%)	Davenport-Rock Island-Moline (-0.16%)	6	← (0)
7	Bloomington-Normal (-0.33%)	Champaign-Urbana-Rantoul (-0.18%)	7	↑ (+2)
8	Springfield (-0.36%)	Bloomington-Normal (-0.22%)	8	↓ (- 1)
9	Champaign-Urbana-Rantoul (-0.53%)	Rockford (-0.68%)	9	↑ (+1)
10	Rockford (-0.62%)	Metro-East (-0.75%)	10	↓ (- 9)

## Growth over last 12-months:

Rank	March 2008	April 2008	Rank	Change**
1	Kankakee (1.13%)	Kankakee (1.59%)	1	← (0)
2	Peoria (0.96%)	Peoria (0.69%)	2	← (0)
3	Decatur (0.91%)	Decatur (0.54%)	3	← (0)
4	Chicago (0.4%)	Bloomington-Normal (0.44%)	4	↑ (+1)
5	Bloomington-Normal (0.33%)	Davenport-Rock Island-Moline (0.37%)	5	↑ (+1)
6	Davenport-Rock Island-Moline (0.26%)	Chicago (0.3%)	6	↓ (- 2)
7	Springfield (0%)	Springfield (0.09%)	7	← (0)
8	Champaign-Urbana-Rantoul (-0.35%)	Champaign-Urbana-Rantoul (-0.27%)	8	← (0)
9	Rockford (-0.43%)	Rockford (-0.8%)	9	← (0)
10	Metro-East (-0.46%)	Metro-East (-1.13%)	10	← (0)

## Talking Points

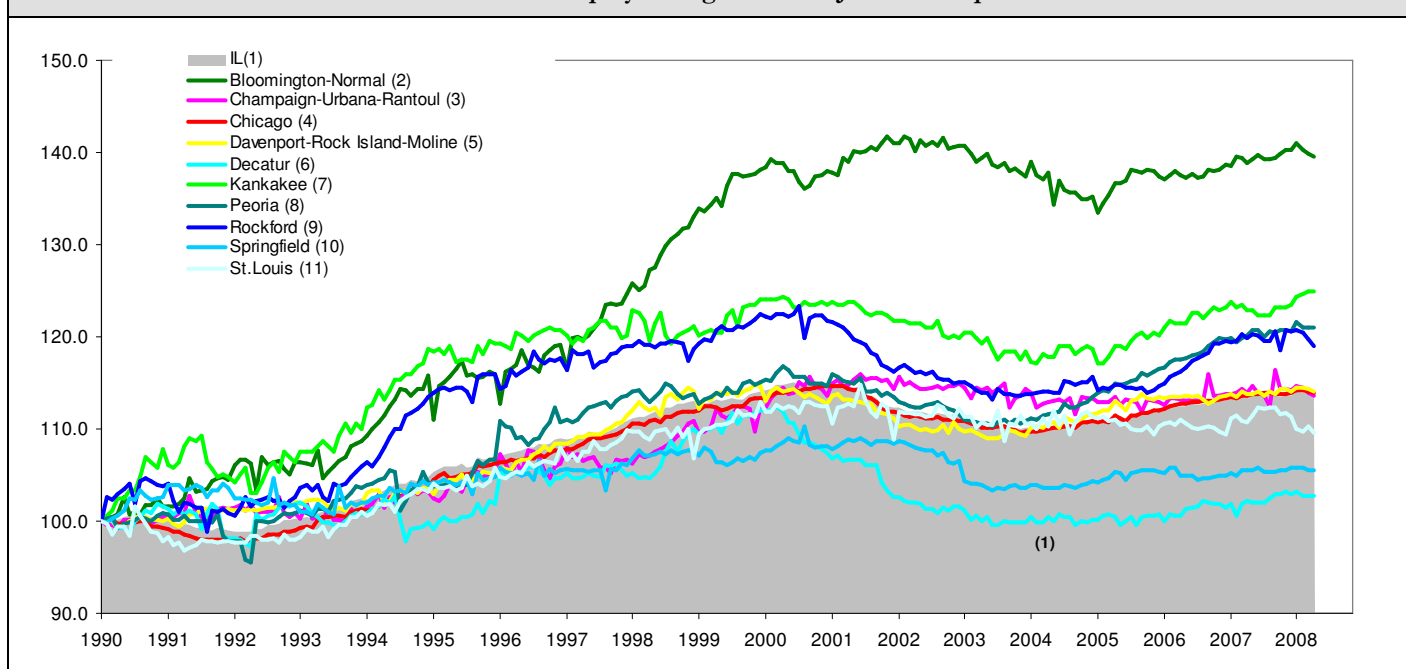
### MSA League Tables

- The most remarkable upward move in April is recorded by Springfield (8<sup>th</sup> to 1<sup>st</sup>) which moved up by 7 ranks.
- Champaign-Urbana-Rantoul (9<sup>th</sup> to 7<sup>th</sup>), Decatur (3<sup>rd</sup> to 2<sup>nd</sup>) and Rockford (10<sup>th</sup> to 9<sup>th</sup>) also had a rank gain in April.
- Peoria (4<sup>th</sup>), Chicago (5<sup>th</sup>) and Davenport-Rock Island-Moline (6<sup>th</sup>) all had their position unchanged from March to April.
- The deepest fall in April was experienced by Metro-East (1<sup>st</sup> to 10<sup>th</sup>).
- Kankakee and Bloomington-Normal also lost ground in April.
- In the 12-months growth league table, Bloomington-Normal (5<sup>th</sup> to 4<sup>th</sup>) and Davenport-Rock-Island-Moline (5<sup>th</sup> to 4<sup>th</sup>) posted the most notable upward move in April.
- Among the MSAs, only Rockford lost ground (4<sup>th</sup> to 6<sup>th</sup>) in April in the 12-months league table.
- Bloomington-Normal (5<sup>th</sup> to 4<sup>th</sup>) and Davenport-Rock Island-Moline (6<sup>th</sup> to 5<sup>th</sup>) both improved by 1 rank.
- The remaining seven MSAs all retained their rank from March.

\*MSA League Tables are based on revised employment data. For instances of equal growth rate for multiple MSAs ranks are decided based on change of growth rate from previous month.

\*\*Changes indicate change in rank position compared to previous month and correspond to the MSA at the right column. Rise is indicated by a '↑' and decline by a '↓' and for an unchanged position a '←' is used. Figures in parenthesis indicate relative rank change from previous month.

### Total non-farm Employment growth rate Jan 1990 – Apr 2008



Shaded area on above chart represents Illinois growth.

MSA DESCRIPTION: **Bloomington-Normal (B-N):** McLean Co. **Champaign-Urbana (C-U-R):** Champaign Co., Ford Co. & Piatt Co. **Chicago:** Cook Co. IL, DeKalb Co. IL, DuPage Co. IL, Grundy Co. IL, Kane Co. IL, Kendall Co. IL, Lake Co. IL, McHenry Co. IL, Will Co. IL & Kenosha Co. WI **Davenport-Moline-Rock Island (D-R-M):** Henry Co. IL, Mercer Co. IL, Rock Island Co. IL & Scott Co. IA **Decatur:** Macon Co. **Kankakee:** Kankakee Co. **Metro-East:** Bond Co., Calhoun Co., Clinton Co., Jersey Co., Macoupin Co., Madison Co., Monroe Co. & St. Clair Co. **Peoria-Pekin (Peoria):** Marshall Co., Peoria Co., Stark Co., Tazewell Co. & Woodford Co. **Rockford:** Boone Co. & Winnebago Co. **Springfield:** Menard Co. & Sangamon Co.

The MSA data (unless noted) were seasonally adjusted to be consistent with state totals.

**ABOUT:** The Illinois Coalition for Jobs, Growth & Prosperity is a not-for-profit 501-c-4 organization. Coalition founding members include the Chicagoland Chamber of Commerce, the Illinois Business Roundtable, the Illinois Civil Justice League, the Illinois Manufacturers' Association, and the Illinois State Chamber of Commerce. Established to provide Illinois voters with information about government-related issues that have a direct effect on jobs, the Coalition represents firms employing more than a million Illinois workers.