

Illinois

Job Index:

MSA Report



Illinois Coalition for Jobs, Growth & Prosperity

Release 10/31/2008	data Jan 1990 / Sep 2008	Issue 11.10	www.real.uiuc.edu
------------------------------	-----------------------------	----------------	--

As a companion to the September 2008 Illinois Job Index that reports a **negative** Rating, this MSA Report provides a localized picture on Illinois job growth and allows for comparisons between local economies, Illinois, the Nation and the Rest of the Midwest.

October 2008	Total non-farm employment	Sep 2008 Number of Jobs	Aug 2008 – Sep 2008		Last 12 months	
			Growth Rate (%)	Number of Jobs	Growth Rate (%)	Number of Jobs
	Illinois Metro	5,472,400	0.21	11,700	-0.01	-700
	Illinois non-Metro (Rural)	498,300	-3.00	-15,400	-2.77	-14,200
	Illinois Chicago (Upstate)	4,275,800	0.12	5,200	0.00	200
	Illinois non-Chicago	1,694,900	-0.52	-8,900	-0.88	-15,100
	Illinois	5,970,700	-0.06	-3,700	-0.25	-14,900
	Rest of Midwest (RMW)	19,724,200	-0.22	-44,000	-0.66	-131,900
	Nation	137,318,000	-0.12	-159,000	-0.38	-519,000

The Illinois Coalition for Jobs, Growth & Prosperity publishes the monthly Illinois Job Index and MSA Report as tools for elected officials, policy leaders and the public. We can better understand the Illinois economy and business climate by comparing and measuring Illinois employment growth rates against those of the Rest of the Midwest (RMW: Indiana, Iowa, Michigan, Missouri, Ohio and Wisconsin) and the Nation. Data and analysis is provided by the Illinois Economic Observatory / Regional Economics Applications Laboratory, University of Illinois. The MSA data (unless noted) were seasonally adjusted to be consistent with state totals.

Talking Points

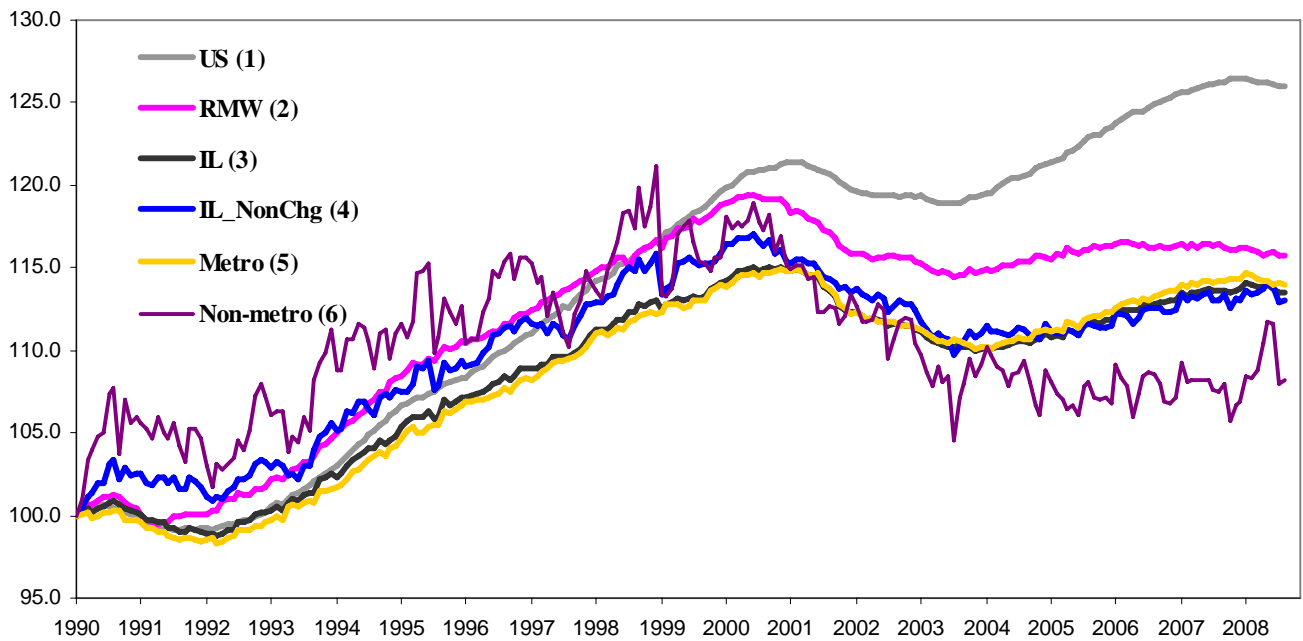
State, Downstate & Metro

- Illinois lost 3,700 jobs at a rate of -0.06% in September, compared to a revised loss of 3,500 jobs in August.
- This is the sixth time in 2008 that Illinois posted negative growth, and Illinois has lost 15,800 jobs since January, 2008.
- The major geographic divisions, Chicago-Downstate or Metro-Non-Metro registered mixed ratings in September. Nine out of ten Metro areas showed gains in employment.
- Illinois Non-metro lost -15,400 jobs at -3.00% in September, compared to a revised 1,200 jobs gain in August. In contrast, Metro posted a 0.21% growth in September by adding 11,700 jobs, compared to a revised loss of -6,400 jobs August.
- Downstate lost 8,900 jobs at -0.52% in September, down from a revised 1,000 job gain in August. Chicago, on the other hand added 5,200 jobs at 0.12%, as opposed to a revised 6,200 loss last month.
- Over the last 12-month period, Illinois registered a -0.25% decline by losing 14,900 jobs.
- In terms of the 12-month aggregated account, Metro posted a negative -0.01% growth by losing 700 jobs whereas Non-Metro lost 14,200 jobs at 2.77%. Chicago added 200 jobs at 0.001% whereas Downstate lost 15,100 jobs at -0.88%.

MSA page (2-4)

- Illinois Metro posted a positive growth rate of 0.21% by adding 11,700 jobs in September. Within the MSAs, nine areas posted positive growth, and one posted negative growth.
- In terms of growth performance, three MSAs posted a net improvement from August to September, and seven declined. The biggest gains in September as compared to August were for Champaign-Urbana-Rantoul (-0.63% to 2.98%), Springfield (-0.71% to 1.17%), and Decatur (-0.18% to 0.18%).
- Nine among the ten MSAs posted net gains in September. The most significant gains were by Chicago with 5,200 jobs at 0.12% growth, Champaign-Urbana-Rantoul with 3,300 jobs at 2.98% growth, and Springfield with 1,300 jobs at 1.17% growth.
- Over the last 12-month period, Kankakee grew the fastest at 1.59% by adding 700 jobs, followed by Peoria at 1.12% by adding 2,100 jobs. Over the four MSAs that posted negative growth rates, Metro-East had the biggest loss of 5,200 jobs at -2.14%.

Total non-farm Employment growth Jan 1990 – Sep 2008



Talking Points

**State,
Downstate &
Metro**

- While Illinois' average growth was 0.09% in 2006 and 0.05% in 2007, the average for 2008 to date is -0.03%.
- Over the last 12-month period, the average growth rate for Metro was 0.00% and for Non-metro it was -0.22%.
- Different from the aggregate trend since January 1990, Illinois did better than the RMW in terms of yearly aggregated trend both in 2006 and 2007. The 2008 average through September is also in favor of Illinois.
- Downstate registered a -0.07% average growth rate in 2008 compared to an average of 0.08% gain in 2006 and 0.05% growth in 2007.

By MSA

Total non-farm employment Seasonally adjusted unless noted*	Sep 2008 Number of Jobs	Aug 2008 –Sep 2008			Last 12 months	
		Change compared to Illinois	Growth Rate %	Number Of Jobs	Growth Rate %	Number of Jobs
Bloomington-Normal (B-N)	91,600	+	0.11	100	0.66	600
Champaign-Urbana (C-U-R)	114,100	+	2.98	3,300	-0.26	-300
Chicago	4,275,800	+	0.12	5,200	0.00	200
Davenport-Rock Island-Moline (D-R-M)	189,400	+	0.21	400	0.64	1,200
Decatur	55,400	+	0.18	100	-0.18	-100
Kankakee	44,800	-	-0.22	-100	1.59	700
Peoria	189,700	+	0.21	400	1.12	2,100
Rockford	161,500	+	0.19	300	-0.43	-700
Springfield	112,700	+	1.17	1,300	0.71	800
Metro-East*	237,400	+	0.30	700	-2.14	-5,200
Illinois			-0.06	-3,700	-0.25	-14,900

MSA League Tables*: Non-farm Employment Growth Rate

Monthly growth:

Rank	August 2008	September 2008	Rank	Change**
1	Peoria (0.26%)	Champaign-Urbana-Rantoul (2.98%)	1	↑ (+8)
2	Metro-East (0.25%)	Springfield (1.17%)	2	↑ (+8)
3	Davenport-Rock Island-Moline (0.16%)	Metro-East (0.3%)	3	↓ (-1)
4	Bloomington-Normal (0%)	Davenport-Rock Island-Moline (0.21%)	4	↓ (-1)
5	Kankakee (0%)	Peoria (0.21%)	5	↓ (-4)
6	Rockford (0%)	Rockford (0.19%)	6	↓ (-1)
7	Chicago (-0.14%)	Decatur (0.18%)	7	↑ (+1)
8	Decatur (-0.18%)	Chicago (0.12%)	8	↓ (-1)
9	Champaign-Urbana-Rantoul (-0.63%)	Bloomington-Normal (0.11%)	9	↓ (-5)
10	Springfield (-0.71%)	Kankakee (-0.22%)	10	↓ (-5)

Growth over last 12 months:

Rank	August 2008	September 2008	Rank	Change**
1	Kankakee (2.51%)	Kankakee (1.59%)	1	← (0)
2	Peoria (0.85%)	Peoria (1.12%)	2	← (0)
3	Bloomington-Normal (0.55%)	Springfield (0.71%)	3	↑ (+6)
4	Davenport-Rock Island-Moline (0%)	Bloomington-Normal (0.66%)	4	↓ (-1)
5	Decatur (0%)	Davenport-Rock Island-Moline (0.64%)	5	↓ (-1)
6	Rockford (0%)	Chicago (0%)	6	↑ (+1)
7	Chicago (-0.17%)	Decatur (-0.18%)	7	↓ (-2)
8	Champaign-Urbana-Rantoul (-0.45%)	Champaign-Urbana-Rantoul (-0.26%)	8	← (0)
9	Springfield (-0.54%)	Rockford (-0.43%)	9	↓ (-3)
10	Metro-East (-2.55%)	Metro-East (-2.14%)	10	← (0)

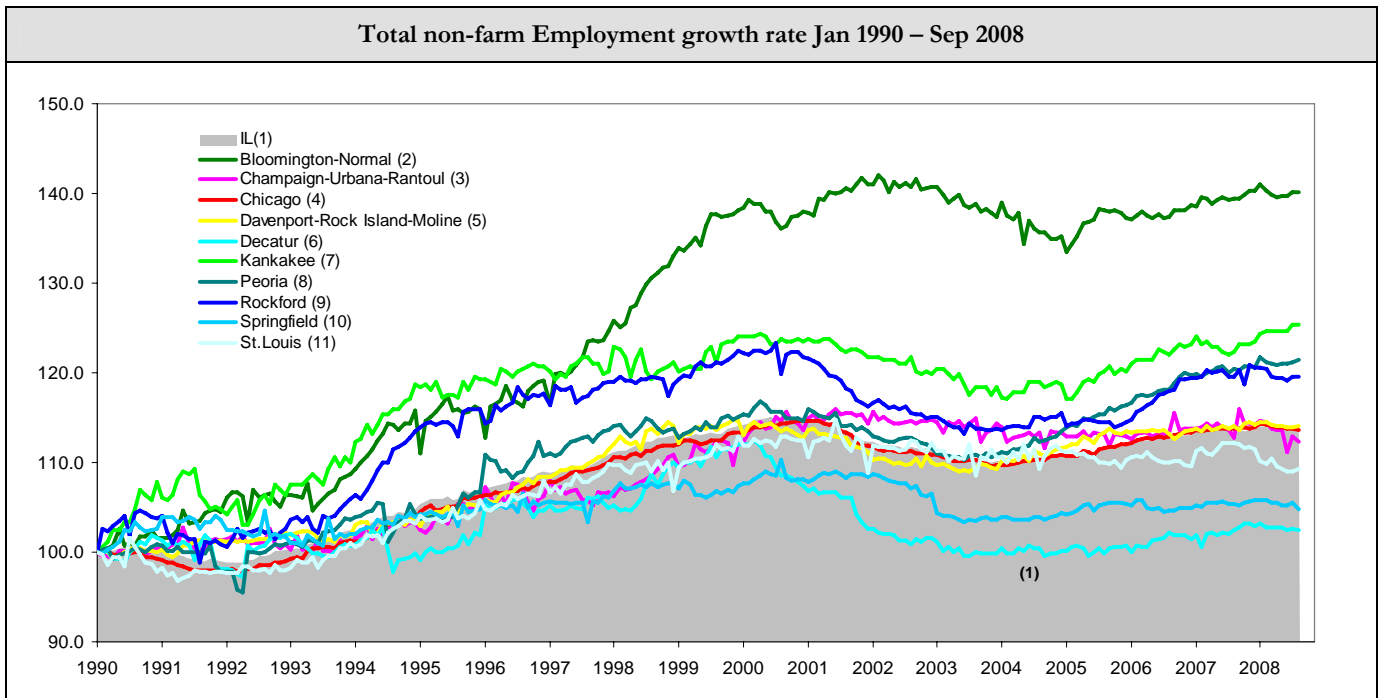
Talking Points

MSA League Tables

- Two most remarkable upward moves in September is by Champaign-Urbana-Rantoul (9th to 1st) and Springfield (10th to 2nd), which both moved up by 8 spots.
- Decatur also made gains in terms of the rank from August.
- Kankakee (5th to 10th), Bloomington-Normal (4th to 9th), and Peoria (1st to 5th) all experienced deep falls in September.
- Metro-East, Davenport-Rock Island-Moline, Rockford, and Chicago also lost ground in September.
- In the 12 months growth league table, upward moves were recorded for Springfield (9th to 3rd), and Chicago (7th to 6th).
- Kankakee, and Peoria are still in the top 2 whereas Metro-East is still in the last position.
- Rockford experienced the greatest fall (6th to 9th) in September, followed by Decatur (5th to 7th), Bloomington-Normal (3rd to 4th), and Davenport-Rock Island-Moline (4th to 5th).

*MSA League Tables are based on revised employment data. For instances of equal growth rate for multiple MSAs ranks are decided based on change of growth rate from previous month.

**Changes indicate change in rank position compared to previous month and correspond to the MSA at the right column. Rise is indicated by a '↑' and decline by a '↓' and for an unchanged position a '←' is used. Figures in parenthesis indicate relative rank change from previous month.



Shaded area on above chart represents Illinois growth.

MSA DESCRIPTION: **Bloomington-Normal (B-N):** McLean Co. **Champaign-Urbana (C-U-R):** Champaign Co., Ford Co. & Piatt Co. **Chicago:** Cook Co. IL, DeKalb Co. IL, DuPage Co. IL, Grundy Co. IL, Kane Co. IL, Kendall Co. IL, Lake Co. IL, McHenry Co. IL, Will Co. IL & Kenosha Co. WI **Davenport-Moline-Rock Island (D-R-M):** Henry Co. IL, Mercer Co. IL, Rock Island Co. IL & Scott Co. IA **Decatur:** Macon Co. **Kankakee:** Kankakee Co. **Metro-East:** Bond Co., Calhoun Co., Clinton Co., Jersey Co., Macoupin Co., Madison Co., Monroe Co. & St. Clair Co. **Peoria-Pekin (Peoria):** Marshall Co., Peoria Co., Stark Co., Tazewell Co. & Woodford Co. **Rockford:** Boone Co. & Winnebago Co. **Springfield:** Menard Co. & Sangamon Co.

The MSA data (unless noted) were seasonally adjusted to be consistent with state totals.

ABOUT: The Illinois Coalition for Jobs, Growth & Prosperity is a not-for-profit 501-c-4 organization. Coalition founding members include the Chicagoland Chamber of Commerce, the Illinois Business Roundtable, the Illinois Civil Justice League, the Illinois Manufacturers' Association, and the Illinois State Chamber of Commerce. Established to provide Illinois voters with information about government-related issues that have a direct effect on jobs, the Coalition represents firms employing more than a million Illinois workers.