

Illinois Job Index:

MSA Report

Release 7/31/2009	data Jan 1990 / July 2009	Issue 12.07	www.real.uiuc.edu
----------------------	------------------------------	----------------	-------------------

NOTE: The US Bureau of Labor Statistics and the Illinois Department of Employment Security changed the way national and state employment data are coordinated to be more consistent. As a result, there have been some significant changes in estimates for Illinois over the past year.

As a companion to the July 2009 Illinois Job Index that reports a **negative** rating, this MSA Report provides a localized picture on Illinois job growth and allows for comparisons between local economies, Illinois, the Nation and the Rest of the Midwest.

July 2009	Total non-farm employment	June 2009 Number of Jobs	May 2009 – June 2009		Last 12 months	
			Growth Rate (%)	Number of Jobs	Growth Rate (%)	Number of Jobs
	Nation	131,692,000	-0.35	-467,000	-4.12	-5,664,000
	Rest of Midwest (RMW)	18,712,400	-0.42	-79,800	-5.12	-1,010,200
	Illinois	5,686,100	-0.24	-13,900	-4.57	-272,600
	Illinois Metro	5,228,400	-0.41	-21,800	-3.92	-213,300
	Illinois non-Metro (Rural)	457,700	1.75	7,900	-11.48	-59,300
	Illinois Chicago (Upstate)	4,055,100	-0.42	-17,100	-4.65	-197,700
	Illinois non-Chicago	1,631,000	0.20	3,200	-4.39	-74,900

The monthly Illinois Job Index and MSA Report are provided as tools for elected officials, policy leaders and the public. We can better understand the Illinois economy and business climate by comparing and measuring Illinois employment growth rates against those of the Rest of the Midwest (RMW: Indiana, Iowa, Michigan, Missouri, Ohio and Wisconsin) and the Nation. Data and analysis is provided by the Illinois Economic Observatory / Regional Economics Applications Laboratory, University of Illinois. The MSA data (unless noted) were seasonally adjusted to be consistent with state totals.

Talking Points

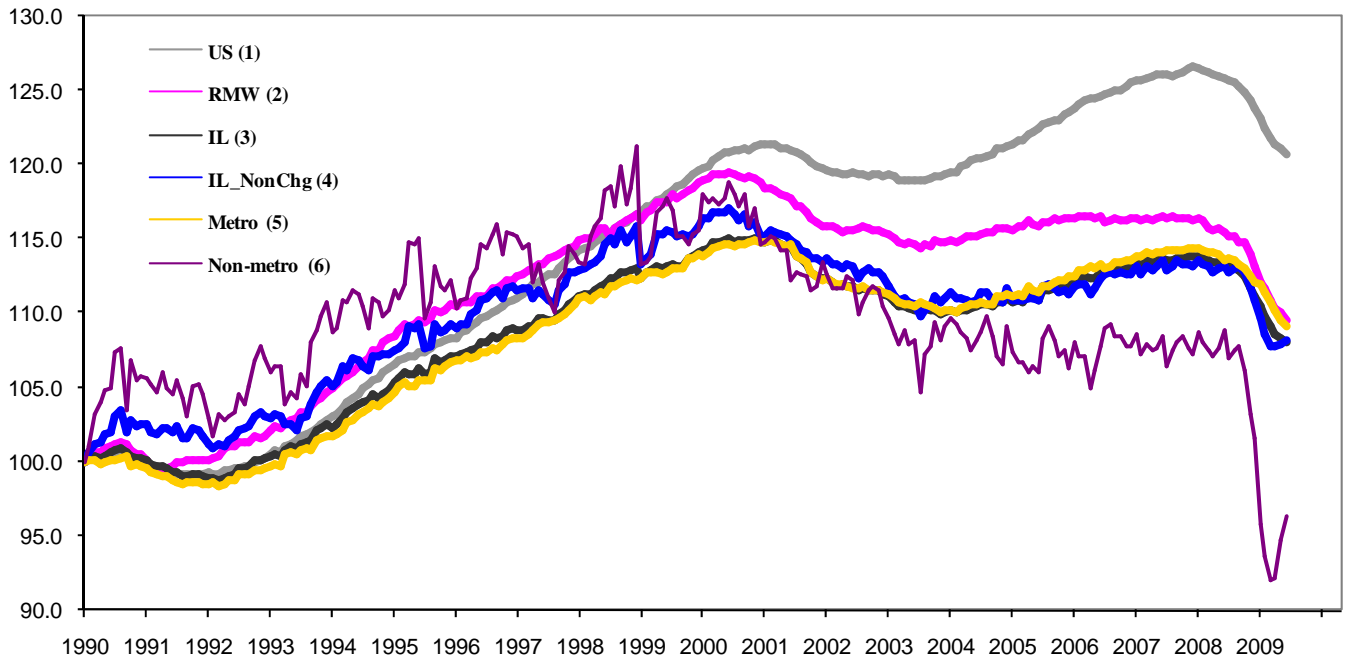
State, Downstate & Metro

- Illinois lost 13,900 jobs at a rate of -0.24% in June, compared to a revised loss of 17,800 jobs in May.
- Illinois has lost 268,400 jobs since the financial crisis developed in September, 2008
- The major geographic divisions, Chicago-Downstate or Metro-Non-metro have mixed performance in June. All the ten Metro areas lost jobs this month.
- Illinois Non-metro added 7,900 jobs at 1.75% this month, compared to a revised 12,000 job increase in May. In contrast, Metro posted a loss of -0.41%, shedding 21,800 jobs, compared to a revised 30,000 job loss in the previous month.
- Chicago lost 17,100 jobs at -0.42% in June, compared to a revised 20,000 job loss last month. Downstate, on the other hand, added 3,200 jobs at 0.20 %, compared to a revised 2,200 job increase in May.
- Over the last 12-month period, Illinois recorded a -4.57% decline by shedding 272,600 jobs. This figure is smaller than -4.58% 12-month decline from May.
- In terms of the 12-month aggregated account, Metro registered a negative -3.92% growth by shedding 213,300 jobs whereas Non-Metro lost 59,300 jobs at -11.48%. Chicago lost 197,700 jobs at -4.65% whereas Downstate lost 74,900 jobs at -4.39%.

MSA page (2-4)

- Illinois Metro posted a negative growth rate of -0.41% by shedding 21,800 jobs in June. All the ten MSAs posted negative growth.
- In terms of growth performance, four MSAs posted a net improvement from May to June, two were unchanged, and four declined.
- Over the last 12-month period, Champaign-Urbana-Rantoul grew the fastest at 1.38% by adding 1,500 jobs, followed by Metro-East at 1.14% by adding 2,700 jobs. Of the eight MSAs that posted negative growth rates, Chicago had the biggest loss of 197,700 jobs at -4.65%.

Total non-farm Employment growth Jan 1990 – June 2009



Talking Points

State, Downstate & Metro

- While the average growth for Illinois' 1990 to 2008 was 0.04%, the average for 2008 is -0.20%, which is worse than the performance during the 2000-2001 downturn.
- Over the last 12-month period, the average growth rate for Metro was -0.33% and for Non-metro it was -0.99%.
- In contrast to the aggregate trend since January 1990, Illinois performed better than the RMW in terms of yearly aggregated trend both in 2007 and 2008. The 2009 average is also in favor of Illinois.
- Downstate registered a -0.41% average growth rate in 2009 compared to an average gain of 0.04% in 2006 and 0.10% growth in 2007.

By MSA

Total non-farm employment Seasonally adjusted unless noted*	June 2009 Number of Jobs	May 2009 – June 2009			Last 12 months	
		Growth compared to Illinois	Growth Rate %	Number Of Jobs	Growth Rate %	Number of Jobs
Bloomington-Normal (B-N)	91,100	+	-0.10	-100	-0.74	-700
Champaign-Urbana (C-U-R)	113,600	-	-0.67	-800	1.38	1,500
Chicago	4,055,100	-	-0.42	-17,200	-4.65	-197,700
Davenport-Rock Island-Moline (D-R-M)	187,300	+	-0.23	-400	-1.15	-2,200
Decatur	53,000	-	-0.28	-200	-3.90	-2,200
Kankakee	42,800	-	-0.34	-100	-3.51	-1,600
Peoria	184,200	+	-0.06	-100	-2.60	-4,900
Rockford	153,100	-	-0.69	-1,100	-3.58	-5,700
Springfield	109,500	-	-0.27	-300	-2.32	-2,600
Metro-East	238,700	-	-0.66	-1,600	1.14	2,700
Illinois			-0.24	-13,900	-4.57	-272,600

MSA League Tables*: Non-farm Employment Growth Rate

Monthly growth:

Rank	May 2009	June 2009	Rank	Change**
1	Champaign-Urbana-Rantoul (-0.19%)	Peoria (-0.06%)	1	↑(+8)
2	Bloomington-Normal (-0.23%)	Bloomington-Normal (-0.1%)	2	←(0)
3	Chicago (-0.49%)	Davenport-Rock Island-Moline (-0.23%)	3	↑(+3)
4	Springfield (-0.53%)	Springfield (-0.27%)	4	←(0)
5	Kankakee (-0.57%)	Decatur (-0.28%)	5	↑(+3)
6	Davenport-Rock Island-Moline (-0.58%)	Kankakee (-0.34%)	6	↓(-1)
7	Rockford (-0.63%)	Chicago (-0.42%)	7	↓(-4)
8	Decatur (-0.99%)	Metro-East (-0.66%)	8	↑(+2)
9	Peoria (-1.26%)	Champaign-Urbana-Rantoul (-0.67%)	9	↓(-8)
10	Metro-East (-1.44%)	Rockford (-0.69%)	10	↓(-3)

Growth over last 12-months:

Rank	May 2009	June 2009	Rank	Change**
1	Metro-East (1.53%)	Champaign-Urbana-Rantoul (1.38%)	1	↑(+1)
2	Champaign-Urbana-Rantoul (0.87%)	Metro-East (1.14%)	2	↓(-1)
3	Bloomington-Normal (-0.49%)	Bloomington-Normal (-0.74%)	3	←(0)
4	Davenport-Rock Island-Moline (-1.3%)	Davenport-Rock Island-Moline (-1.15%)	4	←(0)
5	Springfield (-2.42%)	Springfield (-2.32%)	5	←(0)
6	Peoria (-2.69%)	Peoria (-2.6%)	6	←(0)
7	Rockford (-3.3%)	Kankakee (-3.51%)	7	↑(+2)
8	Decatur (-3.39%)	Rockford (-3.58%)	8	↓(-1)
9	Kankakee (-3.96%)	Decatur (-3.9%)	9	↓(-1)
10	Chicago (-4.63%)	Chicago (-4.65%)	10	←(0)

Talking Points

MSA League Tables

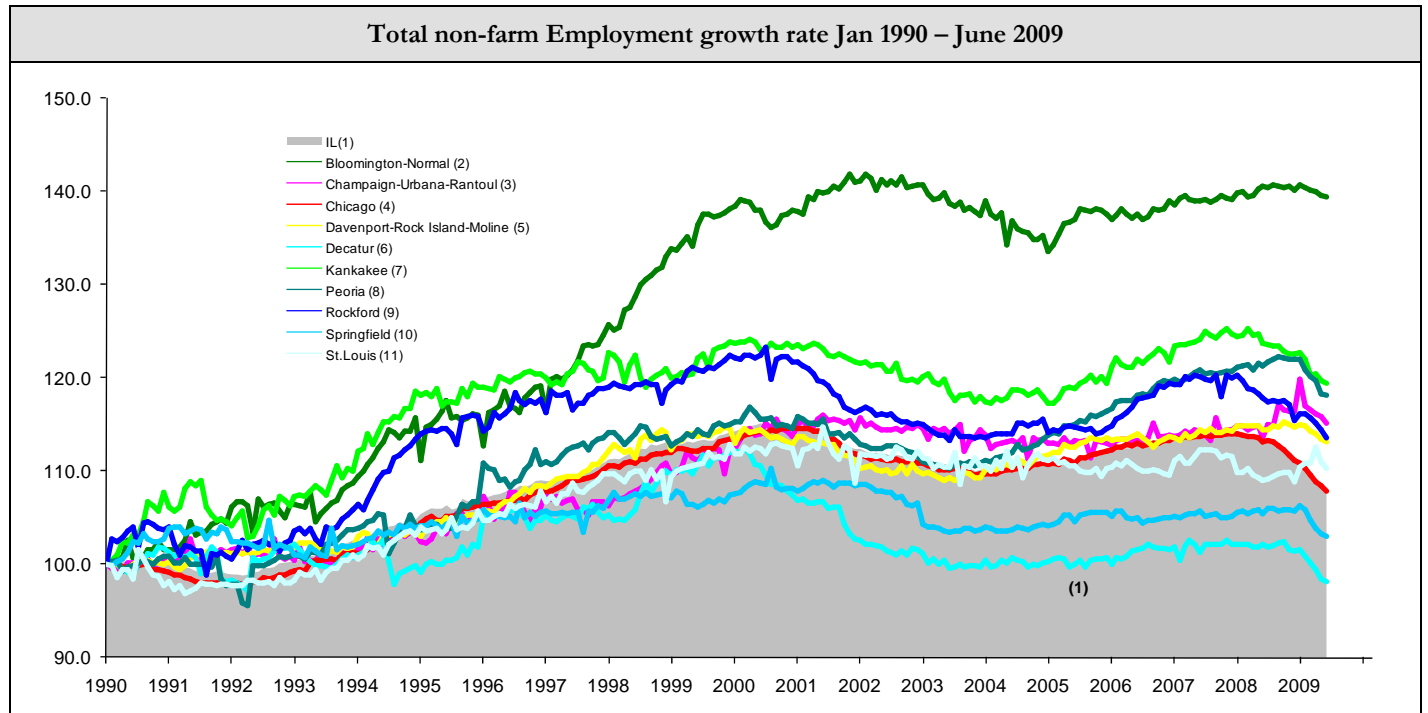
- The most remarkable upward move in June is by Peoria (9th to 1st), which moved up by 8 spots.
- Davenport-Rock Island-Moline (6th to 3rd), Decatur (8th to 5th), and Metro-east (10th to 8th) also gained in terms of rank from last month.
- Champaign-Urbana-Rantoul (1st to 9th) experienced a deep fall this month.
- Kankakee (5th to 6th), Chicago (3rd to 7th), and Rockford (7th to 10th) as well experienced falls in June.
- Bloomington-Normal (2nd to 2nd) and Springfield (4th to 4th) kept the same ranks this month.
- In the 12 months growth league table, upward moves were recorded for Champaign-Urbana-Rantoul (2nd to 1st), and Kankakee (9th to 7th)
- Metro-East (1st to 2nd), Rockford (7th to 8th), and Decatur (8th to 9th) experienced falls in June.
- Champaign-Urbana-Rantoul is on top, while Chicago is still in last place.

*MSA League Tables are based on revised employment data. For instances of equal growth rate for multiple MSAs ranks are decided based on change of growth rate from previous month.

**Changes indicate change in rank position compared to previous month and correspond to the MSA at the right column. Rise is indicated by a '↑' and decline by a '↓' and for an unchanged position a '←' is used. Figures in parenthesis indicate relative rank change from previous month. Shaded area on above chart represents Illinois growth.

June 2009 MSA Employment by sectors (000s) *										
Market Area	Construction	Manufacturing	Trade, transportation & utilities	Information	Financial activities	Professional & business services	Education & health	Leisure & hospitality	Other Services	Government
Bloomington-Normal	2.95	5.45	13.67	1.01	12.22	17.45	9.62	9.99	3.29	15.54
Champaign-Urbana	4.56	9.52	18.67	2.29	4.65	8.32	13.26	10.70	3.40	39.10
Chicago	160.10	393.24	833.72	82.95	289.76	671.92	563.96	360.98	185.79	524.89
Davenport-Rock Island-Moline	9.02	25.82	39.27	3.02	8.39	23.99	25.27	18.26	7.38	27.58
Decatur	3.83	10.75	10.96	0.79	2.01	3.11	8.23	4.70	2.71	5.96
Kankakee	1.55	4.80	10.53	0.50	1.89	3.13	8.15	3.73	1.91	6.80
Peoria	8.99	28.37	34.31	2.46	8.76	22.12	32.43	18.00	7.79	21.10
Rockford	6.62	29.15	29.19	2.17	6.45	18.06	22.92	12.49	9.48	17.47
Springfield	4.66	3.28	17.48	2.42	7.32	10.49	17.28	10.28	6.51	30.01

* The Illinois Department of Employment Security does not collect sector employment data for Metro-East



MSA DESCRIPTION: **Bloomington-Normal (B-N)**: McLean Co. **Champaign-Urbana (C-U-R)**: Champaign Co., Ford Co. & Piatt Co. **Chicago**: Cook Co. IL, DeKalb Co. IL, DuPage Co. IL, Grundy Co. IL, Kane Co. IL, Kendall Co. IL, Lake Co. IL, McHenry Co. IL, Will Co. IL & Kenosha Co. WI **Davenport-Moline-Rock Island (D-R-M)**: Henry Co. IL, Mercer Co. IL, Rock Island Co. IL & Scott Co. IA **Decatur**: Macon Co. **Kankakee**: Kankakee Co. **Metro-East**: Bond Co., Calhoun Co., Clinton Co., Jersey Co., Macoupin Co., Madison Co., Monroe Co. & St. Clair Co. **Peoria-Pekin (Peoria)**: Marshall Co., Peoria Co., Stark Co., Tazewell Co. & Woodford Co. **Rockford**: Boone Co. & Winnebago Co. **Springfield**: Menard Co. & Sangamon Co.

The MSA data (unless noted) were seasonally adjusted to be consistent with state totals.

The Illinois Economic Observatory is part of the Institute of Government and Public Affairs at the University of Illinois.