

Illinois Job Index:

MSA Report

Release 12/07/2009	data Jan 1990 / Oct 2009	Issue 12.11	www.real.uiuc.edu
-----------------------	-----------------------------	----------------	-------------------

NOTE: The US Bureau of Labor Statistics and the Illinois Department of Employment Security changed the way national and state employment data are coordinated to be more consistent. As a result, there have been some significant changes in estimates for Illinois over the past year.

As a companion to the September 2009 Illinois Job Index that reports a **negative** rating, this MSA Report provides a localized picture on Illinois job growth and allows for comparisons between local economies, Illinois, the Nation and the Rest of the Midwest.

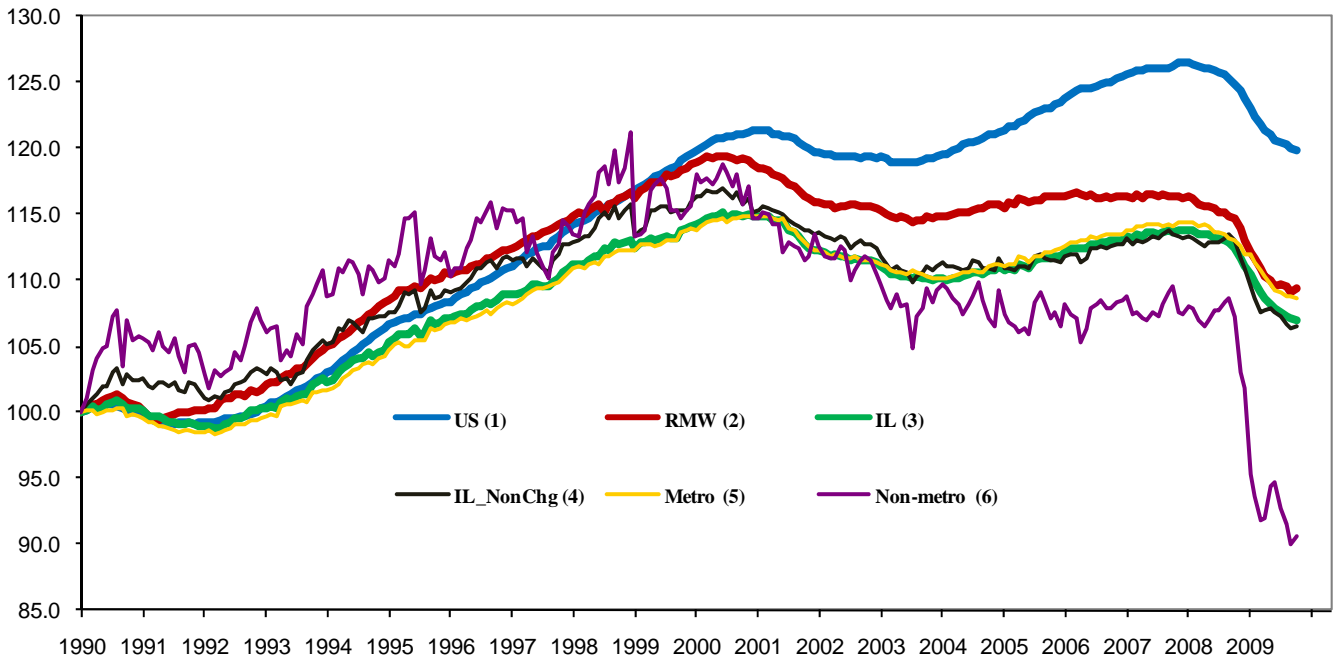
November 2009	Total non-farm employment	Oct 2009 Number of Jobs	Sep 2009 – Oct 2009		Last 12 months	
			Growth Rate (%)	Number of Jobs	Growth Rate (%)	Number of Jobs
	Nation	130,848,000	-0.14	-190,000	-4.04	-5,504,000
	Rest of Midwest (RMW)	18,689,800	0.22	41,200	-4.63	-908,000
	Illinois	5,635,600	-0.06	-3,200	-4.83	-286,300
	Illinois Metro	5,205,500	-0.11	-5,700	-3.82	-206,700
	Illinois non-Metro (Rural)	430,100	0.60	2,500	-15.61	-79,600
	Illinois Chicago (Upstate)	4,029,300	-0.12	-4,900	-4.45	-187,800
	Illinois non-Chicago	1,606,300	0.11	1,700	-5.78	-98,500

The monthly Illinois Job Index and MSA Report are provided as tools for elected officials, policy leaders and the public. We can better understand the Illinois economy and business climate by comparing and measuring Illinois employment growth rates against those of the Rest of the Midwest (RMW: Indiana, Iowa, Michigan, Missouri, Ohio and Wisconsin) and the Nation. Data and analysis is provided by the Illinois Economic Observatory / Regional Economics Applications Laboratory, University of Illinois. The MSA data (unless noted) were seasonally adjusted to be consistent with state totals.

Talking Points

<p>State, Downstate & Metro</p>	<ul style="list-style-type: none"> Illinois lost 3,200 jobs at a rate of -0.06% in October 2009, compared to a revised 10,100 job loss in September. Illinois has lost 358,100 jobs since the economic crisis developed in December, 2007 The major geographic divisions, Chicago-Downstate or Metro-Non-metro have mixed performance in October. Illinois Non-metro added 2,500 jobs at 0.60% this month, still it only has 90.5% jobs compare to January 1990. On the other hand, Metro posted a loss of -0.11%, losing 5,700 jobs, compared to a revised 2,800 job loss in the previous month. Chicago lost 4,900 jobs at -0.12% in October. Downstate added 1,700 jobs at 0.11 %, compared to a revised 3,900 job loss in September. Over the last 12-months, Illinois recorded a payroll cut of 286,700 jobs at -4.83%. This is better than last month of -5.10%. In terms of the 12-month aggregated account, Metro registered a negative -3.82% growth by shedding 206,700 jobs whereas Non-Metro lost 79,600 jobs at -15.61%. Chicago lost 187,800 jobs at -4.45% whereas Downstate lost 98,500 jobs at -5.78%.
<p>MSA page (2-4)</p>	<ul style="list-style-type: none"> Illinois Metro posted a negative growth rate of -0.11% by shedding 5,700 jobs in October. Two out of the ten MSAs, Bloomington-Normal and Kankakee posted positive growth. In terms of growth performance, four MSAs posted a net improvement from September to October, six declined in terms of rank. Metro-East ranked as the first in terms of 12-month growth performance, while Decatur instead of Chicago ranked as the last. Over the last 12-month period, Metro-East grew the fastest at 1.58% by adding 3,800 jobs. Of the nine MSAs that posted negative growth rates, Chicago had the biggest loss of 187,800 jobs at -4.45%.

Total non-farm Employment growth Jan 1990 – Oct 2009



Talking Points

State, Downstate & Metro

- While the average growth for Illinois' 1990 to 2008 was 0.04%, the average from Jan 2008 to October 2009 is -0.29%, which is worse than the performance during the 2000-2001 downturn.
- Over the last 12-month period, the average growth rate for Metro was -0.32% and for Non-metro it was -1.38%.
- In contrast to the aggregate trend since January 1990, Illinois performed better than the RMW in terms of yearly aggregated trend both in 2008 and 2009.
- Downstate registered a -0.40% average growth rate in 2009 compared to an average gain of 0.04% in 2006 and 0.10% growth in 2007.

By MSA

Total non-farm employment Seasonally adjusted unless noted*	Oct 2009 Number of Jobs	Sep 2009 – Oct 2009			Last 12 months	
		Growth compared to Illinois	Growth Rate %	Number Of Jobs	Growth Rate %	Number of Jobs
Bloomington-Normal (B-N)	90,800	+	0.15	100	-0.92	-800
Champaign-Urbana (C-U-R)	113,400	-	-0.11	-100	-1.49	-1,700
Chicago	4,029,300	-	-0.12	-4,900	-4.45	-187,800
Davenport-Rock Island-Moline (D-R-M)	187,100	+	-0.01	0	-1.85	-3,500
Decatur	52,700	+	0.03	0	-4.48	-2,500
Kankakee	42,600	+	0.24	100	-3.13	-1,400
Peoria	184,000	+	-0.05	-100	-3.27	-6,200
Rockford	153,700	+	0.01	0	-2.76	-4,400
Springfield	110,300	-	-0.47	-500	-1.91	-2,100
Metro-East	241,500	-	-0.14	-300	1.58	3,800
Illinois			-0.06	-3,200	-4.83	-286,300

MSA League Tables*: Non-farm Employment Growth Rate

Monthly growth:

Rank	Sep 2009	Oct 2009	Rank	Change**
1	Champaign-Urbana-Rantoul (1.74%)	Kankakee (0.24%)	1	↑(+9)
2	Springfield (1.47%)	Bloomington-Normal (0.15%)	2	↑(+7)
3	Davenport-Rock Island-Moline (0.19%)	Decatur (0.03%)	3	↑(+1)
4	Decatur (0.17%)	Rockford (0.01%)	4	↑(+4)
5	Peoria (0.05%)	Davenport-Rock Island-Moline (-0.01%)	5	↓(-2)
6	Metro-East (0.02%)	Peoria (-0.05%)	6	↓(-1)
7	Chicago (-0.15%)	Champaign-Urbana-Rantoul (-0.11%)	7	↓(-6)
8	Rockford (-0.15%)	Chicago (-0.12%)	8	↓(-1)
9	Bloomington-Normal (-0.33%)	Metro-East (-0.14%)	9	↓(-3)
10	Kankakee (-0.52%)	Springfield (-0.47%)	10	↓(-8)

Growth over last 12-months:

Rank	Sep 2009	Oct 2009	Rank	Change**
1	Metro-East (1.97%)	Metro-East (1.58%)	1	←(0)
2	Champaign-Urbana-Rantoul (-0.9%)	Bloomington-Normal (-0.92%)	2	↑(+1)
3	Bloomington-Normal (-1.24%)	Champaign-Urbana-Rantoul (-1.49%)	3	↓(-1)
4	Springfield (-1.3%)	Davenport-Rock Island-Moline (-1.85%)	4	↑(+1)
5	Davenport-Rock Island-Moline (-1.5%)	Springfield (-1.91%)	5	↓(-1)
6	Rockford (-2.86%)	Rockford (-2.76%)	6	←(0)
7	Peoria (-3.3%)	Kankakee (-3.13%)	7	↑(+1)
8	Kankakee (-3.98%)	Peoria (-3.27%)	8	↓(-1)
9	Decatur (-4.49%)	Chicago (-4.45%)	9	↑(+1)
10	Chicago (-4.66%)	Decatur (-4.48%)	10	↓(-1)

Talking Points

MSA League Tables

- The most remarkable upward moves in October were by Kankakee (10th to 1st) and Bloomington-Normal (9th to 2nd), which moved up by 9 spots and 7 spots, respectively.
- Rockford (8th to 4th) and Decatur (4th to 3rd) both gained in terms of rank from last month.
- Springfield (2nd to 10th) and Champaign-Urbana-Rantoul (1st to 7th) both experienced deep falls this month.
- Metro-East (6th to 10th), Davenport-Rock Island-Moline (3rd to 5th), Peoria (5th to 6th), and Chicago (6th to 9th) all experienced falls in October.
- In the 12 months growth league table, the upward moves were recorded for Bloomington-Normal (3rd to 2nd), Davenport-Rock Island-Moline (5th to 4th), Kankakee (8th to 7th), and Chicago (10th to 9th), while the downward moves were by Champaign-Urbana-Rantoul (2nd to 3rd), Springfield (4th to 5th), and Decatur (9th to 10th).
- The other two MSAs maintained the same ranks.
- Metro-East is still on top, while Decatur instead of Chicago is in last place.

*MSA League Tables are based on revised employment data. For instances of equal growth rate for multiple MSAs ranks are decided based on change of growth rate from previous month.

**Changes indicate change in rank position compared to previous month and correspond to the MSA at the right column. Rise is indicated by a '↑' and decline by a '↓' and for an unchanged position a '←' is used. Figures in parenthesis indicate relative rank change from previous month.

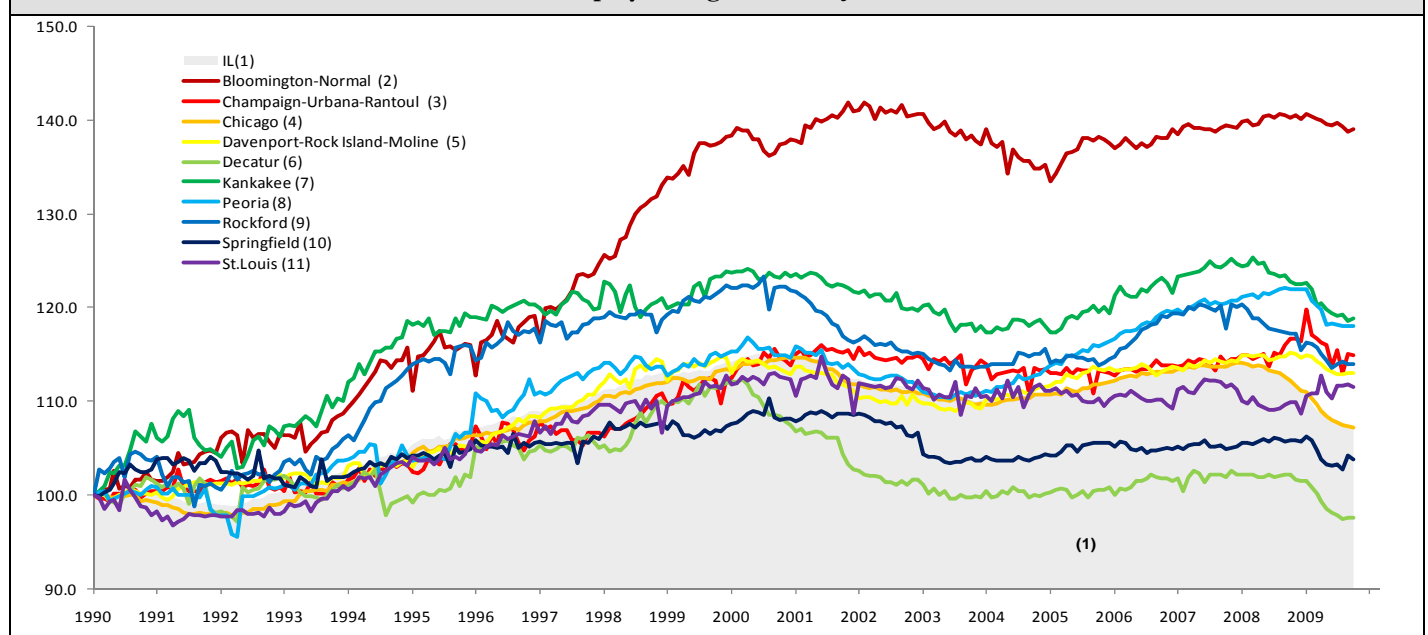
Shaded area on above chart represents Illinois growth.

October 2009 MSA Employment by sectors (000s) *

Market Area	Construction	Manufacturing	Trade, transportation & utilities	Information	Financial activities	Professional & business services	Education & health	Leisure & hospitality	Other Services	Government
Bloomington-Normal	2.96 (3.3%)	5.24 (5.8%)	13.68 (15.1%)	1.00 (1.1%)	12.22 (13.5%)	17.5 (19.3%)	9.64 (10.6%)	9.92 (10.9%)	3.27 (3.6%)	15.35 (16.9%)
Champaign-Urbana	4.43 (3.9%)	9.67 (8.5%)	18.59 (16.4%)	2.44 (2.2%)	4.60 (4.1%)	8.34 (7.4%)	13.3 (11.7%)	10.63 (9.4%)	3.34 (2.9%)	37.94 (33.5%)
Chicago	154.45 (3.8%)	386.99 (9.6%)	821.46 (20.4%)	80.74 (2%)	284.83 (7.1%)	665.41 (16.5%)	566.95 (14.1%)	360.2 (8.9%)	181.41 (4.5%)	526 (13.1%)
Davenport-Rock Island-Moline	9.11 (4.9%)	25.47 (13.6%)	39.4 (21.1%)	2.99 (1.6%)	8.44 (4.5%)	23.21 (12.4%)	25.31 (13.5%)	18.3 (9.8%)	7.10 (3.8%)	27.66 (14.8%)
Decatur	3.62 (6.9%)	10.48 (19.9%)	10.86 (20.6%)	0.80 (1.5%)	1.99 (3.8%)	3.10 (5.9%)	8.13 (15.4%)	4.92 (9.3%)	2.75 (5.2%)	6.04 (11.5%)
Kankakee	1.62 (3.8%)	4.75 (11.2%)	10.46 (24.5%)	0.49 (1.2%)	1.90 (4.5%)	3.04 (7.1%)	8.03 (18.8%)	3.66 (8.6%)	1.82 (4.3%)	6.9 (16.2%)
Peoria	9.18 (5.0%)	28.02 (15.2%)	34.03 (18.5%)	2.41 (1.3%)	8.69 (4.7%)	22.39 (12.2%)	32.47 (17.6%)	17.85 (9.7%)	7.66 (4.2%)	21.38 (11.6%)
Rockford	6.46 (4.2%)	30.56 (19.9%)	28.54 (18.6%)	2.11 (1.4%)	6.42 (4.2%)	18.07 (11.8%)	22.86 (14.9%)	12.44 (8.1%)	9.41 (6.1%)	17.24 (11.2%)
Springfield	4.79 (4.3%)	3.25 (2.9%)	17.59 (16%)	2.55 (2.3%)	7.14 (6.5%)	10.86 (9.8%)	17.16 (15.6%)	10.56 (9.6%)	6.50 (5.9%)	29.91 (27.1%)
IL	220.68 (3.9%)	574.59 (10.2%)	1144.09 (20.3%)	106.42 (1.9%)	368.68 (6.5%)	783.47 (13.9%)	799.4 (14.2%)	518.9 (9.2%)	257.45 (4.6%)	856.32 (15.2%)

* The Illinois Department of Employment Security does not collect sector employment data for Metro-East

Total non-farm Employment growth rate Jan 1990 – Oct 2009



MSA DESCRIPTION: **Bloomington-Normal (B-N):** McLean Co. **Champaign-Urbana (C-U-R):** Champaign Co., Ford Co. & Piatt Co. **Chicago:** Cook Co. IL, DeKalb Co. IL, DuPage Co. IL, Grundy Co. IL, Kane Co. IL, Kendall Co. IL, Lake Co. IL, McHenry Co. IL, Will Co. IL & Kenosha Co. WI **Davenport-Moline-Rock Island (D-R-M):** Henry Co. IL, Mercer Co. IL, Rock Island Co. IL & Scott Co. IA **Decatur:** Macon Co. **Kankakee:** Kankakee Co. **Metro-East:** Bond Co., Calhoun Co., Clinton Co., Jersey Co., Macoupin Co., Madison Co., Monroe Co. & St. Clair Co. **Peoria-Pekin (Peoria):** Marshall Co., Peoria Co., Stark Co., Tazewell Co. & Woodford Co. **Rockford:** Boone Co. & Winnebago Co. **Springfield:** Menard Co. & Sangamon Co.

The MSA data (unless noted) were seasonally adjusted to be consistent with state totals.

The Illinois Economic Observatory is part of the Institute of Government and Public Affairs at the University of Illinois.