

Illinois Job Index:

MSA Report

Release 01/10/2011	data Jan 1990 / Nov 2010	Issue 13.12	www.real.illinois.edu
-----------------------	-----------------------------	----------------	-----------------------

Note: IDES revised their estimates for the number of jobs at the beginning of 2010.

As a companion to the Oct 2010 Illinois Job Index that reports a positive rating, this MSA Report provides a localized picture on Illinois job growth and allows for comparisons between local economies, Illinois, the Nation and the Rest of the Midwest.

Dec 2010	Total non-farm employment	Nov 2010 Number of Jobs	Oct 2010 – Nov 2010		Last 12 months	
			Growth Rate (%)	Number of Jobs	Growth Rate (%)	Number of Jobs
	Nation	130,539,000	0.03	39,000	0.65	842,000
	Rest of Midwest (RMW)	18,503,200	-0.15	-27,000	0.14	26,400
	Illinois	5,612,900	-0.05	-2,600	0.59	32,900
	Illinois Metro	5,043,600	-0.06	-3,100	-1.02	-52,200
	Illinois non-Metro (Rural)	569,300	0.09	500	17.57	85,000
	Illinois Chicago (Upstate)	3,916,300	-0.07	-2,900	-1.24	-49,100
	Illinois non-Chicago	1,696,600	0.02	300	5.08	82,000

The monthly Illinois Job Index and MSA Report are provided as tools for elected officials, policy leaders and the public. We can better understand the Illinois economy and business climate by comparing and measuring Illinois employment growth rates against those of the Rest of the Midwest (RMW: Indiana, Iowa, Michigan, Missouri, Ohio and Wisconsin) and the Nation. Data and analysis is provided by the Illinois Economic Observatory / Regional Economics Applications Laboratory, University of Illinois. The MSA data (unless noted) were seasonally adjusted to be consistent with state totals.

Talking Points

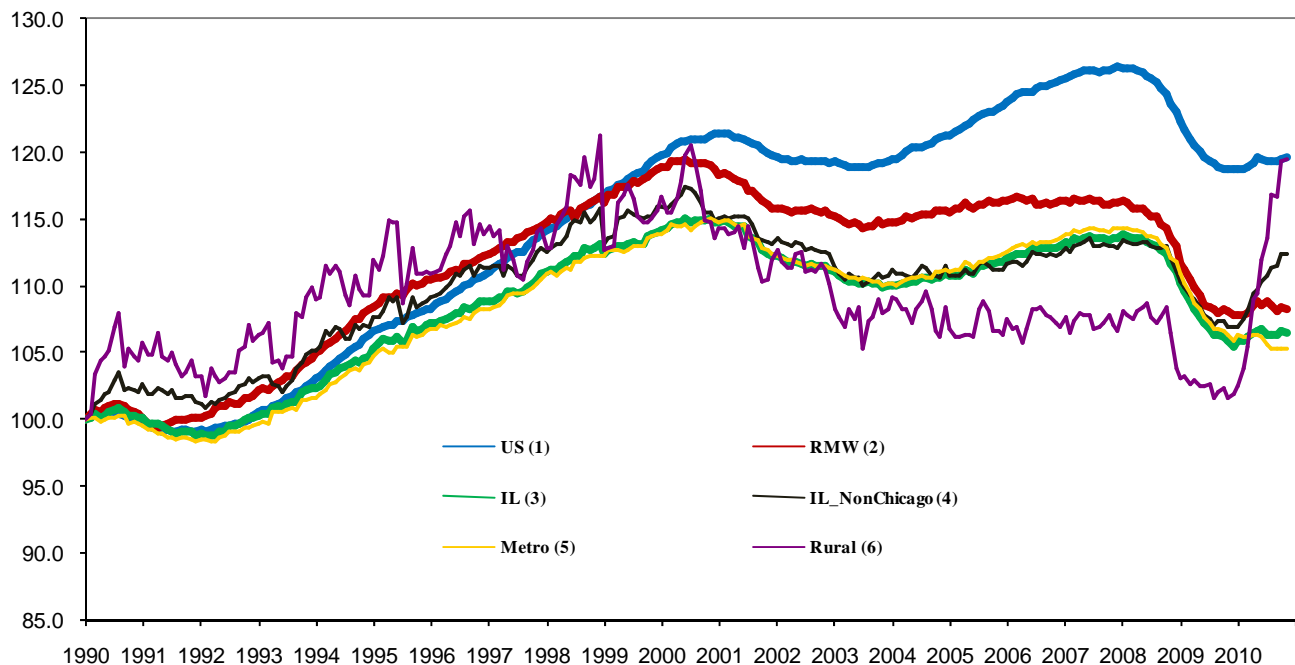
State, Downstate & Metro

- Illinois shed 2,600 jobs in November 2010 at a rate of -0.05%, compared with a revised 11,600 job gain in October. Compared to November 2009, Illinois added 32,900 jobs, the largest monthly year-over-year increase since December 2007.
- Illinois has lost 371,300 jobs since the economic crisis developed in December, 2007
- The major geographic divisions, Chicago-Downstate and Metro-Rural had mixed performances in November.
- Illinois Rural area added 500 jobs at 0.09% this month, compared to a revised 13,000 job gain in October. Rural recovered to the same employment level of June 2000. At the same time, Metro shed 3,100 jobs, compared to a revised -1,400 job loss in the previous month.
- Chicago shed 2,900 jobs at -0.07% in November 2010, compared to a revised -2,500 job loss last month. On the other hand, Downstate added 300 jobs at 0.02%, compared to a revised 14,100 job gain in October.
- Over the last 12-months, Illinois recorded a payroll increase of 32,900 jobs at 0.59%. This is the largest monthly year-over-year increase since December 2007
- In terms of the 12-month aggregated account, Metro registered a negative -1.02% growth by shedding 52,200 jobs whereas Rural added 85,000 jobs at 17.57%. Chicago lost 49,100 jobs at -1.24% whereas Downstate added 82,000 jobs at 5.08%.

MSA page (2-4)

- Illinois Metro shed 52,200 jobs in the eleventh month of 2010. Five out of the ten MSAs posted positive growth in November.
- In terms of growth performance, five MSAs posted a net improvement from October to November, three declined in terms of rank.
- Davenport-Rock Island-Moline ranked first in terms of monthly growth performance, while Decatur dropped to the last place.
- Over the last 12-month period, Davenport-Rock Island-Moline grew the fastest at 0.99% by adding 1,700 jobs. Metro remained unchanged in the last place.

Total non-farm Employment growth Jan 1990 – Nov 2010



Talking Points

State, Downstate & Metro

- While the average growth for Illinois between 1990 and 2008 was 0.04%, the average from December 2007 to Nov 2010 is -0.18%, which is worse than the performance during the 2000-2001 downturns.
- Since the economic crisis in December, 2007, the average growth for Metro is -0.22 while for Rural is 0.29%. The same rate for Downstate is -0.01% while for Upstate is -0.24%.
- Over the last 12-month period, the average growth rate for Metro was -0.09% and for Rural it was 1.36%.
- Illinois performed worse than the RMW and the nation in terms of yearly aggregated trend in 2009, but so far in 2010, Illinois's performance is better than the RMW and the nation.
- Downstate registered a 1.47% average growth rate in the eleven months of 2010 compared to an average gain of 0.10% growth in 2007, -0.17% decline in 2008, and -0.32% decline in 2009.

By MSA

Market Area	Nov 2010 Number of Jobs	Oct 2010 –Nov 2010			Last 12 months	
		Growth compared to Illinois	Growth Rate %	Number Of Jobs	Growth Rate %	Number of Jobs
Bloomington-Normal (B-N)	88,500	-	-0.16	-100	0.03	0
Champaign-Urbana (C-U-R)	108,800	+	0.15	200	0.02	0
Chicago	3,916,300	-	-0.07	-2,900	-1.24	-49,100
Davenport-Rock Island-Moline (D-R-M)	179,000	+	0.18	300	0.99	1,700
Decatur	51,400	-	-0.62	-300	-1.12	-600
Kankakee	42,900	-	-0.12	-50	-0.65	-300
Peoria	174,500	-	-0.28	-500	-0.44	-800
Rockford	142,200	+	0.01	0	0.83	1,200
Springfield	109,600	+	0.09	100	-0.51	-600
Metro-East	230,400	+	0.11	200	-1.63	-3,800
Illinois			-0.05	-2,600	0.59	32,900

MSA League Tables*: Non-farm Employment Growth Rate

Monthly growth:

Rank	Oct 2010	Nov 2010	Rank	Change**
1	Rockford (0.66%)	Davenport-Rock Island-Moline(0.18%)	1	↑(+5)
2	Kankakee (0.33%)	Champaign-Urbana-Rantoul(0.15%)	2	↑(+2)
3	Bloomington-Normal (0.23%)	Metro-East (0.11%)	3	↑(+5)
4	Champaign-Urbana-Rantoul (0.22%)	Springfield (0.09%)	4	↑(+1)
5	Springfield (0.05%)	Rockford (0.01%)	5	↓(-4)
6	Davenport-Rock Island-Moline (0.01%)	Chicago (-0.07%)	6	↑(+1)
7	Chicago (-0.06%)	Kankakee (-0.12%)	7	↓(-5)
8	Metro-East (-0.09%)	Bloomington-Normal (-0.16%)	8	↓(-5)
9	Peoria(-0.15%)	Peoria (-0.28%)	9	↔(+0)
10	Decatur (-0.17%)	Decatur (-0.62%)	10	↔(+0)

Growth over last 12-months:

Rank	Oct 2010	Nov 2010	Rank	Change**
1	Rockford (0.27%)	Davenport-Rock Island-Moline (0.99%)	1	↑(+1)
2	Davenport-Rock Island-Moline (0.18%)	Rockford (0.83%)	2	↓(-1)
3	Peoria (0.15%)	Bloomington-Normal (0.03%)	3	↑(+1)
4	Bloomington-Normal (0.03%)	Champaign-Urbana-Rantoul (0.02%)	4	↑(+1)
5	Champaign-Urbana-Rantoul (-0.21%)	Peoria (-0.44%)	5	↓(-2)
6	Springfield (-0.61%)	Springfield (-0.51%)	6	↔(+0)
7	Kankakee (-0.66%)	Kankakee (-0.65%)	7	↔(+0)
8	Decatur (-1.31%)	Decatur (-1.12%)	8	↔(+0)
9	Chicago (-1.45%)	Chicago (-1.24%)	9	↔(+0)
10	Metro-East (-1.94%)	Metro-East (-1.63%)	10	↔(+0)

Talking Points

MSA League Tables

- Kankakee and Bloomington-Normal experienced the deepest fall this month.
- Rockford (1st to 5th) also dropped in terms of rank from last month.
- The most remarkable upward move in November was Davenport-Rock Island-Moline (6th to 1st) and Metro-East (8th to 3rd)
- Champaign-Urbana-Rantoul (4th to 2nd), Springfield (5th to 4th) and Chicago (7th to 6th) also gained in terms of rank.
- In the 12 months growth league table, upward moves were recorded for Davenport-Rock Island-Moline (2nd to 1st), Bloomington-Normal (4th to 3rd) and Champaign-Urbana-Rantoul (5th to 4th) while downward moves were recorded for Rockford (1st to 2nd), Peoria(3rd to 5th)
- Springfield, Kankakee, Decatur, Chicago, Metro-East remained unchanged in terms of rank.

*MSA League Tables are based on revised employment data. For instances of equal growth rate for multiple MSAs ranks are decided based on change of growth rate from previous month.

**Changes indicate change in rank position compared to previous month and correspond to the MSA at the right column. Rise is indicated by a '↑' and decline by a '↓' and for an unchanged position a '↔' is used. Figures in parenthesis indicate relative rank change from previous month.

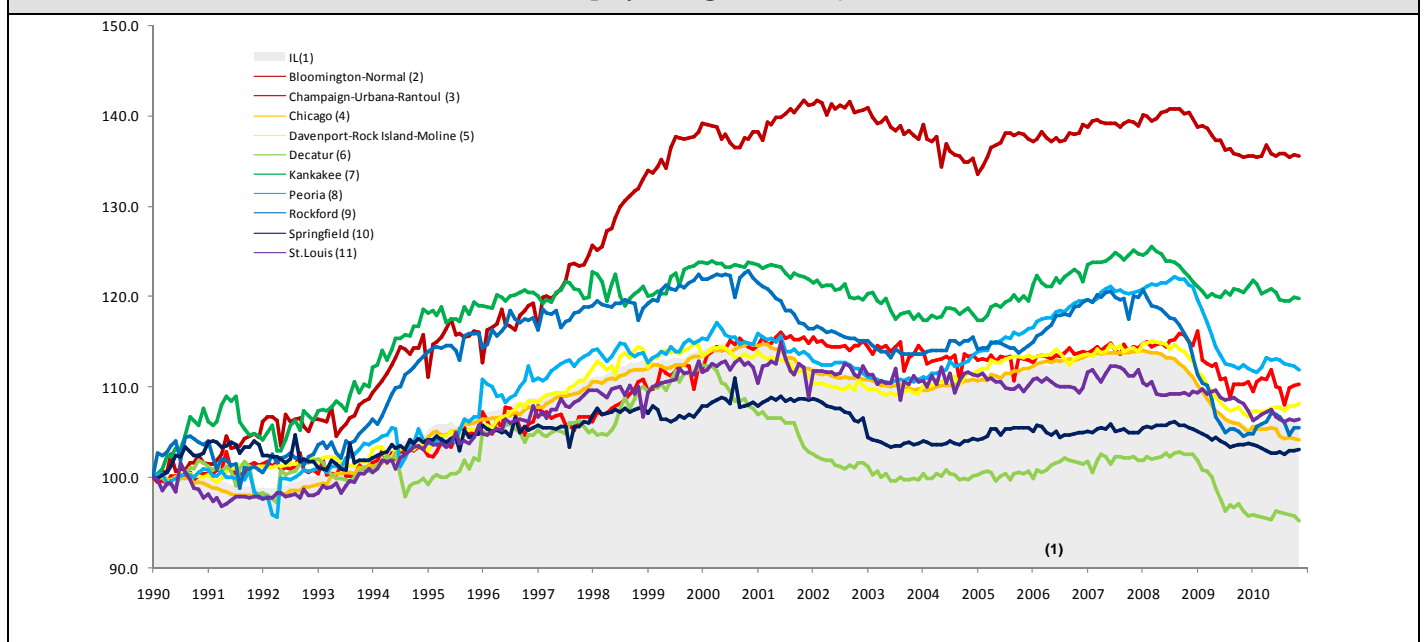
Shaded area on above chart represents Illinois growth.

Nov 2010 MSA Employment by Sectors (000s) *

Market Area	Construction	Manufacturing	Trade, transportation & utilities	Information	Financial activities	Professional & business services	Education & health	Leisure & hospitality	Other Services	Government
Bloomington-Normal	2.82 (3.2%)	4.05 (4.6%)	13.48 (15.2%)	1.01 (1.1%)	12.37 (14.0%)	16.89 (19.1%)	10.00 (11.3%)	9.31 (10.5%)	3.33 (3.8%)	15.28 (17.3%)
Champaign-Urbana	3.65 (3.4%)	8.03 (7.4%)	17.56 (16.1%)	2.68 (2.5%)	4.53 (4.2%)	7.58 (7.0%)	13.62 (12.5%)	9.97 (9.2%)	3.25 (3.0%)	37.86 (34.8%)
Chicago	123.15 (3.1%)	371.01 (9.5%)	793.42 (20.3%)	78.59 (2.0%)	279.97 (7.1%)	620.59 (15.8%)	586.53 (15.0%)	354.51 (9.1%)	177.98 (4.5%)	530.63 (13.5%)
Davenport-Rock Island-Moline	0.80 (2.7%)	4.72 (16.2%)	6.85 (23.4%)	0.30 (1.0%)	1.40 (4.8%)	2.19 (7.5%)	3.14 (10.7%)	2.27 (7.8%)	1.22 (4.2%)	6.4 (21.9%)
Decatur	8.29 (4.6%)	22.13 (12.4%)	37.87 (21.2%)	2.88 (1.6%)	8.25 (4.6%)	20.94 (11.7%)	26.15 (14.6%)	17.84 (10.0%)	7.59 (4.2%)	27.12 (15.2%)
Kankakee	3.05 (5.9%)	10.22 (19.9%)	10.61 (20.7%)	0.80 (1.6%)	2.00 (3.9%)	3.47 (6.8%)	8.25 (16.1%)	4.45 (8.7%)	2.55 (5.0%)	6.09 (11.8%)
Peoria	1.42 (3.3%)	4.85 (11.3%)	10.18 (23.7%)	0.60 (1.4%)	1.79 (4.2%)	2.66 (6.2%)	8.70 (20.3%)	3.77 (8.8%)	1.71 (4.0%)	7.20 (16.8%)
Rockford	8.50 (4.9%)	25.68 (14.7%)	31.56 (18.1%)	2.42 (1.4%)	7.69 (4.4%)	20.5 (11.7%)	33.17 (19%)	16.26 (9.3%)	7.49 (4.3%)	21.26 (12.2%)
Springfield	5.19 (3.6%)	26.12 (18.4%)	27.45 (19.3%)	1.94 (1.4%)	5.88 (4.1%)	14.33 (10.1%)	23.38 (16.4%)	11.95 (8.4%)	8.90 (6.3%)	17.19 (12.1%)
IL	201.00 (3.6%)	562.26 (10%)	1133.26 (20.2%)	105.77 (1.9%)	360.74 (6.4%)	786.22 (14.0%)	837.13 (14.9%)	505.8 (9.0%)	258.62 (4.6%)	854.95 (15.2%)

* The Illinois Department of Employment Security does not collect sector employment data for Metro-East

Total non-farm Employment growth rate Jan 1990 –Nov 2010



MSA DESCRIPTION: **Bloomington-Normal (B-N):** McLean Co. **Champaign-Urbana (C-U-R):** Champaign Co., Ford Co. & Piatt Co. **Chicago:** Cook Co. IL, DeKalb Co. IL, DuPage Co. IL, Grundy Co. IL, Kane Co. IL, Kendall Co. IL, Lake Co. IL, McHenry Co. IL, Will Co. IL & Kenosha Co. WI **Davenport-Moline-Rock Island (D-R-M):** Henry Co. IL, Mercer Co. IL, Rock Island Co. IL & Scott Co. IA **Decatur:** Macon Co. **Kankakee:** Kankakee Co. **Metro-East:** Bond Co., Calhoun Co., Clinton Co., Jersey Co., Macoupin Co., Madison Co., Monroe Co. & St. Clair Co. **Peoria-Pekin (Peoria):** Marshall Co., Peoria Co., Stark Co., Tazewell Co. & Woodford Co. **Rockford:** Boone Co. & Winnebago Co. **Springfield:** Menard Co. & Sangamon Co. The MSA data (unless noted) were seasonally adjusted to be consistent with state totals.

The Illinois Economic Observatory and Illinois Jobs Index is part of the Institute of Government and Public Affairs at the University of Illinois.