

Illinois Job Index:

MSA Report

Release 02/04/2010	data Jan 1990 / Dec 2009	Issue 13.1	www.real.illinois.edu
-----------------------	-----------------------------	---------------	-----------------------

As a companion to the December 2009 Illinois Job Index that reports a **negative** rating, this MSA Report provides a localized picture on Illinois job growth and allows for comparisons between local economies, Illinois, the Nation and the Rest of the Midwest.

December 2009	Total non-farm employment	Dec 2009 Number of Jobs	Nov 2009 – Dec 2009		Last 12 months	
			Growth Rate (%)	Number of Jobs	Growth Rate (%)	Number of Jobs
	Nation	130,910,000	-0.06	-85,000	-3.08	-4,164,000
	Rest of Midwest (RMW)	18,603,600	-0.38	-70,700	-3.72	-718,300
	Illinois	5,612,200	-0.29	-16,300	-4.06	-237,300
	Illinois Metro	5,171,600	-0.34	-17,600	-3.56	-191,100
	Illinois non-Metro (Rural)	440,600	0.29	1,300	-9.48	-46,200
	Illinois Chicago (Upstate)	4,000,600	-0.36	-14,500	-4.16	-173,600
	Illinois non-Chicago	1,611,600	-0.11	-1,800	-3.80	-63,700

The monthly Illinois Job Index and MSA Report are provided as tools for elected officials, policy leaders and the public. We can better understand the Illinois economy and business climate by comparing and measuring Illinois employment growth rates against those of the Rest of the Midwest (RMW: Indiana, Iowa, Michigan, Missouri, Ohio and Wisconsin) and the Nation. Data and analysis is provided by the Illinois Economic Observatory / Regional Economics Applications Laboratory, University of Illinois. The MSA data (unless noted) were seasonally adjusted to be consistent with state totals.

Talking Points

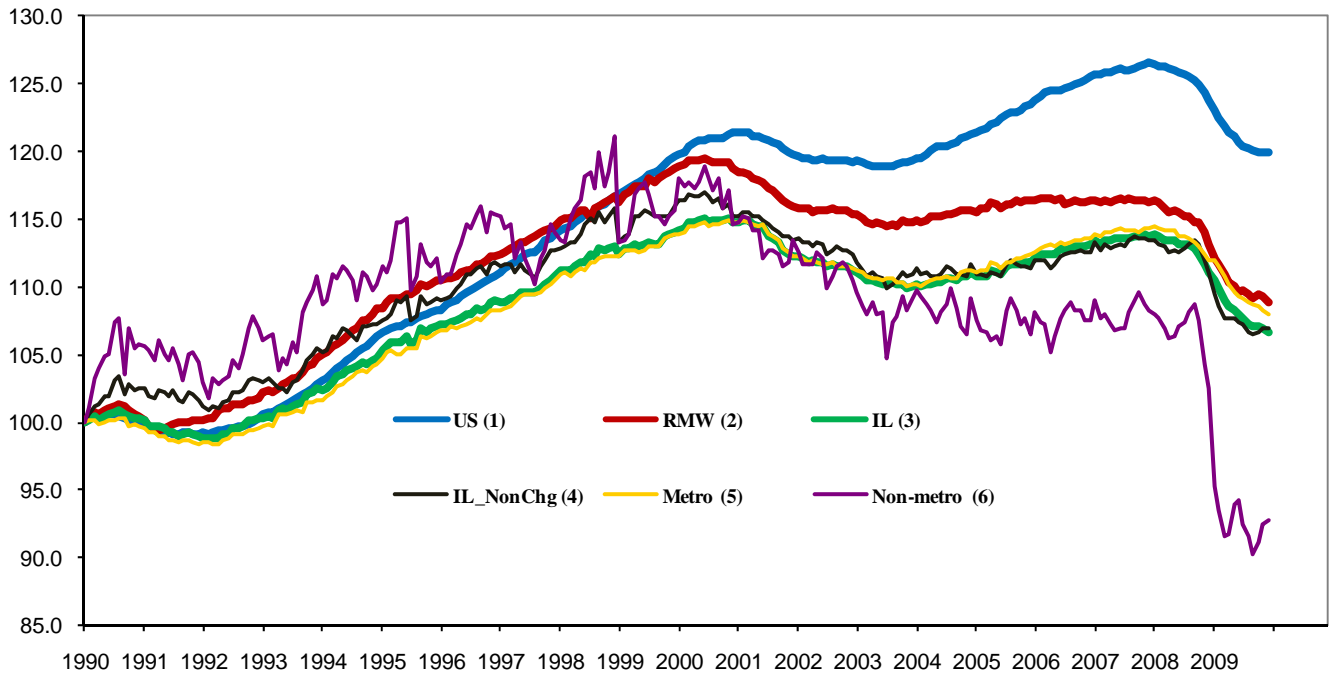
State, Downstate & Metro

- Illinois lost 16,300 jobs at a rate of -0.29% in December 2009, compared to a revised 8,200 job loss in November.
- Illinois has lost 381,500 jobs since the economic crisis developed in December, 2007
- The major geographic divisions, Chicago-Downstate or Metro-Non-metro have mixed performance in December.
- Illinois Non-metro added 1,300 jobs at 0.29% this month, still it only has 92.7% jobs compared to January 1990. On the other hand, Metro posted a loss of -0.34%, losing 17,600 jobs, compared to a revised 14,200 job loss in the previous month.
- Chicago lost 14,500 jobs at -0.36% in December. Downstate lost 1,800 jobs at 0.11 %, compared to a revised 4,500 job increase in November.
- Over the last 12-months, Illinois recorded a payroll cut of 237,300 jobs at -4.06%. This is better than the highest month -5.13% in August 2009.
- In terms of the 12-month aggregated account, Metro registered a negative -3.56% growth by shedding 191,100 jobs whereas Non-Metro lost 46,200 jobs at -9.48%. Chicago lost 173,600 jobs at -4.16% whereas Downstate lost 63,700 jobs at -3.80%.

MSA page (2-4)

- Illinois Metro posted a negative growth rate of -0.29% by shedding 16,300 jobs in December. Only one out of the ten MSAs, Champaign-Urbana-Rantoul, posted positive growth.
- In terms of growth performance, four MSAs posted a net improvement from November to December, two declined in terms of rank.
- Metro-East ranked as the first in terms of 12-month growth performance, while Decatur ranked as the last.
- Over the last 12-month period, Metro-East grew the fastest at 1.93% by adding 4,600 jobs. Of the nine MSAs that posted negative growth rates, Chicago had the biggest loss of 173,600 jobs at -4.16%.

Total non-farm Employment growth Jan 1990 – Dec 2009



Talking Points

State, Downstate & Metro

- While the average growth for Illinois between 1990 and 2008 was 0.04%, the average from December 2007 to December 2009 is -0.26%, which is worse than the performance during the 2000-2001 downturn.
- Over the last 12-month period, the average growth rate for Metro was -0.30% and for Non-metro it was -0.80%.
- In contrast to the aggregate trend since January 1990, Illinois performed better than the RMW in terms of yearly aggregated trend both in 2008 and 2009.
- Downstate registered a -0.32% average growth rate in 2009 compared to an average gain of 0.04% in 2006, 0.10% growth in 2007, and -0.17% decline in 2008.

By MSA

Total non-farm employment Seasonally adjusted unless noted*	Dec 2009 Number of Jobs	Nov 2009 – Dec 2009			Last 12 months	
		Growth compared to Illinois	Growth Rate %	Number Of Jobs	Growth Rate %	Number of Jobs
Bloomington-Normal (B-N)	90,300	-	-0.37	-300	-1.32	-1,200
Champaign-Urbana (C-U-R)	113,500	+	0.10	100	-0.99	-1,100
Chicago	4,000,600	-	-0.36	-14,500	-4.16	-173,600
Davenport-Rock Island-Moline (D-R-M)	186,400	+	-0.23	-400	-1.85	-3,500
Decatur	52,200	-	-0.49	-300	-4.65	-2,500
Kankakee	42,400	+	-0.15	-100	-3.33	-1,500
Peoria	183,400	+	-0.20	-400	-3.47	-6,600
Rockford	152,600	-	-0.33	-500	-1.93	-3,000
Springfield	109,600	+	-0.34	-400	-2.34	-2,600
Metro-East	240,600	-	-0.36	-900	1.93	4,600
Illinois			-0.29	-16,300	-4.06	-237,300

MSA League Tables*: Non-farm Employment Growth Rate

Monthly growth:

Rank	Nov 2009	Dec 2009	Rank	Change**
1	Metro-East (0.07%)	Champaign-Urbana-Rantoul (0.1%)	1	↑(+1)
2	Champaign-Urbana-Rantoul (-0.04%)	Kankakee (-0.15%)	2	↑(+5)
3	Bloomington-Normal (-0.11%)	Peoria (-0.2%)	3	↑(+2)
4	Davenport-Rock Island-Moline (-0.11%)	Davenport-Rock Island-Moline (-0.23%)	4	↔(0)
5	Peoria (-0.13%)	Rockford (-0.33%)	5	↑(+4)
6	Springfield (-0.21%)	Springfield (-0.34%)	6	↔(0)
7	Kankakee (-0.26%)	Metro-East (-0.36%)	7	↓(-6)
8	Chicago (-0.32%)	Chicago (-0.36%)	8	↔(0)
9	Rockford (-0.35%)	Bloomington-Normal (-0.37%)	9	↓(-6)
10	Decatur (-0.36%)	Decatur (-0.49%)	10	↔(0)

Growth over last 12-months:

Rank	Nov 2009	Dec 2009	Rank	Change**
1	Metro-East (1.74%)	Metro-East (1.93%)	1	↔(0)
2	Bloomington-Normal (-1.14%)	Champaign-Urbana-Rantoul (-0.99%)	2	↑(+1)
3	Champaign-Urbana-Rantoul (-1.41%)	Bloomington-Normal (-1.32%)	3	↓(-1)
4	Davenport-Rock Island-Moline (-1.81%)	Davenport-Rock Island-Moline (-1.85%)	4	↔(0)
5	Springfield (-2.09%)	Rockford (-1.93%)	5	↑(+1)
6	Rockford (-2.9%)	Springfield (-2.34%)	6	↓(-1)
7	Kankakee (-3.14%)	Kankakee (-3.33%)	7	↔(0)
8	Peoria (-3.33%)	Peoria (-3.47%)	8	↔(0)
9	Decatur (-4.14%)	Chicago (-4.16%)	9	↑(+1)
10	Chicago (-4.22%)	Decatur (-4.65%)	10	↓(-1)

Talking Points

MSA League Tables

- The most remarkable upward moves in December were by Kankakee (7th to 2nd) and Rockford (9th to 5th), which moved up by 6 spots and 4 spots, respectively.
- Champaign-Urbana-Rantoul (2nd to 1st) and Peoria (5th to 3rd) both gained in terms of rank from last month.
- Metro-East (1st to 7th) and Bloomington-Normal (3rd to 9th) both experienced deep falls this month.
- In the 12 months growth league table, the upward moves were recorded for Champaign-Urbana-Rantoul (3rd to 2nd), Rockford (6th to 5th), and Chicago (10th to 9th), while the downward moves were by Bloomington-Normal (2nd to 3rd), Springfield (5th to 6th), and Decatur (9th to 10th).
- The other four MSAs maintained the same ranks.
- Metro-East is still on the top, while Decatur instead of Chicago is in the last place.

*MSA League Tables are based on revised employment data. For instances of equal growth rate for multiple MSAs ranks are decided based on change of growth rate from previous month.

**Changes indicate change in rank position compared to previous month and correspond to the MSA at the right column. Rise is indicated by a '↑' and decline by a '↓' and for an unchanged position a '↔' is used. Figures in parenthesis indicate relative rank change from previous month.

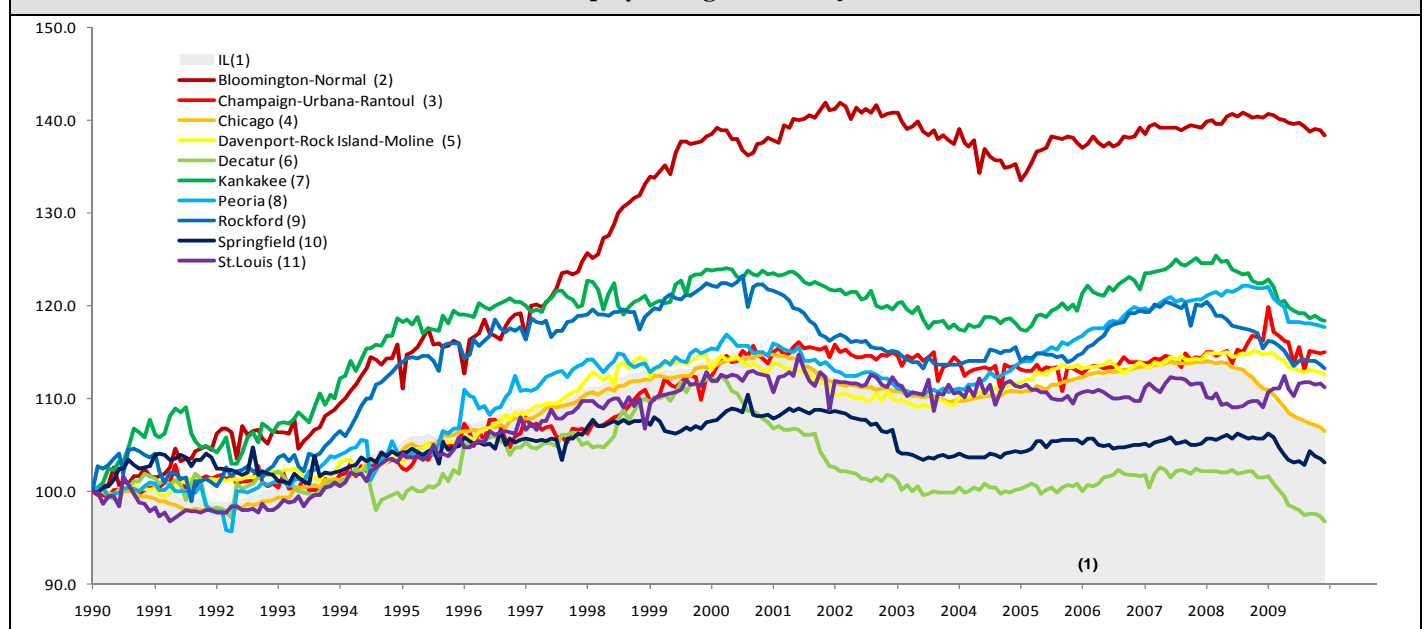
Shaded area on above chart represents Illinois growth.

December 2009 MSA Employment by Sectors (000s) *

Market Area	Construction	Manufacturing	Trade, transportation & utilities	Information	Financial activities	Professional & business services	Education & health	Leisure & hospitality	Other Services	Government
Bloomington-Normal	2.84 (3.1%)	5.26 (5.8%)	13.59 (15.1%)	0.99 (1.1%)	12.31 (13.6%)	17.51 (19.4%)	9.61 (10.6%)	9.72 (10.8%)	3.27 (3.6%)	15.18 (16.8%)
Champaign-Urbana	4.20 (3.7%)	9.64 (8.5%)	18.4 (16.2%)	2.58 (2.3%)	4.73 (4.2%)	8.35 (7.4%)	13.23 (11.7%)	10.46 (9.2%)	3.34 (2.9%)	38.66 (34.1%)
Chicago	145.64 (3.6%)	384.05 (9.6%)	808.75 (20.2%)	79.74 (2%)	284.23 (7.1%)	662.94 (16.6%)	567.67 (14.2%)	354.88 (8.9%)	180.95 (4.5%)	526.84 (13.2%)
Davenport-Rock Island-Moline	9.03 (4.8%)	25.36 (13.6%)	38.88 (20.9%)	3.10 (1.7%)	8.38 (4.5%)	23.1 (12.4%)	25.27 (13.6%)	18.44 (9.9%)	7.08 (3.8%)	27.58 (14.8%)
Decatur	3.80 (7.3%)	10.22 (19.6%)	10.77 (20.6%)	0.80 (1.5%)	1.98 (3.8%)	3.10 (5.9%)	8.12 (15.5%)	4.76 (9.1%)	2.68 (5.1%)	5.99 (11.5%)
Kankakee	1.70 (4.0%)	4.65 (11%)	10.43 (24.6%)	0.49 (1.2%)	1.91 (4.5%)	3.01 (7.1%)	8.03 (18.9%)	3.59 (8.5%)	1.83 (4.3%)	6.90 (16.3%)
Peoria	9.14 (5.0%)	27.63 (15.1%)	33.67 (18.4%)	2.47 (1.3%)	8.66 (4.7%)	22.75 (12.4%)	32.34 (17.6%)	17.82 (9.7%)	7.60 (4.1%)	21.43 (11.7%)
Rockford	6.36 (4.2%)	30.08 (19.7%)	27.9 (18.3%)	2.15 (1.4%)	6.40 (4.2%)	18.19 (11.9%)	22.82 (15%)	12.34 (8.1%)	9.42 (6.2%)	17.08 (11.2%)
Springfield	4.81 (4.4%)	3.21 (2.9%)	17.17 (15.7%)	2.43 (2.2%)	7.08 (6.5%)	10.8 (9.8%)	17.06 (15.6%)	10.32 (9.4%)	6.48 (5.9%)	30.0 (27.4%)
IL	209.77 (3.7%)	568 (10.1%)	1130.36 (20.2%)	106.07 (1.9%)	369.4 (6.6%)	788.26 (14.1%)	799.97 (14.3%)	507.83 (9.1%)	256.42 (4.6%)	856.05 (15.3%)

* The Illinois Department of Employment Security does not collect sector employment data for Metro-East

Total non-farm Employment growth rate Jan 1990 – Dec 2009



MSA DESCRIPTION: **Bloomington-Normal (B-N):** McLean Co. **Champaign-Urbana (C-U-R):** Champaign Co., Ford Co. & Piatt Co. **Chicago:** Cook Co. IL, DeKalb Co. IL, DuPage Co. IL, Grundy Co. IL, Kane Co. IL, Kendall Co. IL, Lake Co. IL, McHenry Co. IL, Will Co. IL & Kenosha Co. WI **Davenport-Moline-Rock Island (D-R-M):** Henry Co. IL, Mercer Co. IL, Rock Island Co. IL & Scott Co. IA **Decatur:** Macon Co. **Kankakee:** Kankakee Co. **Metro-East:** Bond Co., Calhoun Co., Clinton Co., Jersey Co., Macoupin Co., Madison Co., Monroe Co. & St. Clair Co. **Peoria-Pekin (Peoria):** Marshall Co., Peoria Co., Stark Co., Tazewell Co. & Woodford Co. **Rockford:** Boone Co. & Winnebago Co. **Springfield:** Menard Co. & Sangamon Co.

The MSA data (unless noted) were seasonally adjusted to be consistent with state totals.

The Illinois Economic Observatory is part of the Institute of Government and Public Affairs at the University of Illinois.