

Illinois Job Index:

MSA Report

Release 08/02/2010	data Jan 1990 / June 2010	Issue 13.7	www.real.illinois.edu
-----------------------	------------------------------	---------------	-----------------------

Note: IDES revised their estimates for the number of jobs at the beginning of 2010.

As a companion to the July 2010 Illinois Job Index that reports an unchanged rating, this MSA Report provides a localized picture on Illinois job growth and allows for comparisons between local economies, Illinois, the Nation and the Rest of the Midwest.

July 2010	Total non-farm employment	June 2010 Number of Jobs	May 2010 – June 2010		Last 12 months	
			Growth Rate (%)	Number of Jobs	Growth Rate (%)	Number of Jobs
	Nation	130,470,000	-0.10	-125,000	-0.13	-170,000
	Rest of Midwest (RMW)	18,586,400	-0.06	-11,600	0.22	40,100
	Illinois	5,617,800	0.00	-200	-0.50	-28,500
	Illinois Metro	5,078,200	-0.39	-19,900	-1.53	-78,600
	Illinois non-Metro (Rural)	539,600	3.79	19,700	10.24	50,100
	Illinois Chicago (Upstate)	3,946,300	-0.44	-17,400	-1.76	-70,700
	Illinois non-Chicago	1,671,500	1.04	17,200	2.59	42,200

The monthly Illinois Job Index and MSA Report are provided as tools for elected officials, policy leaders and the public. We can better understand the Illinois economy and business climate by comparing and measuring Illinois employment growth rates against those of the Rest of the Midwest (RMW: Indiana, Iowa, Michigan, Missouri, Ohio and Wisconsin) and the Nation. Data and analysis is provided by the Illinois Economic Observatory / Regional Economics Applications Laboratory, University of Illinois. The MSA data (unless noted) were seasonally adjusted to be consistent with state totals.

Talking Points

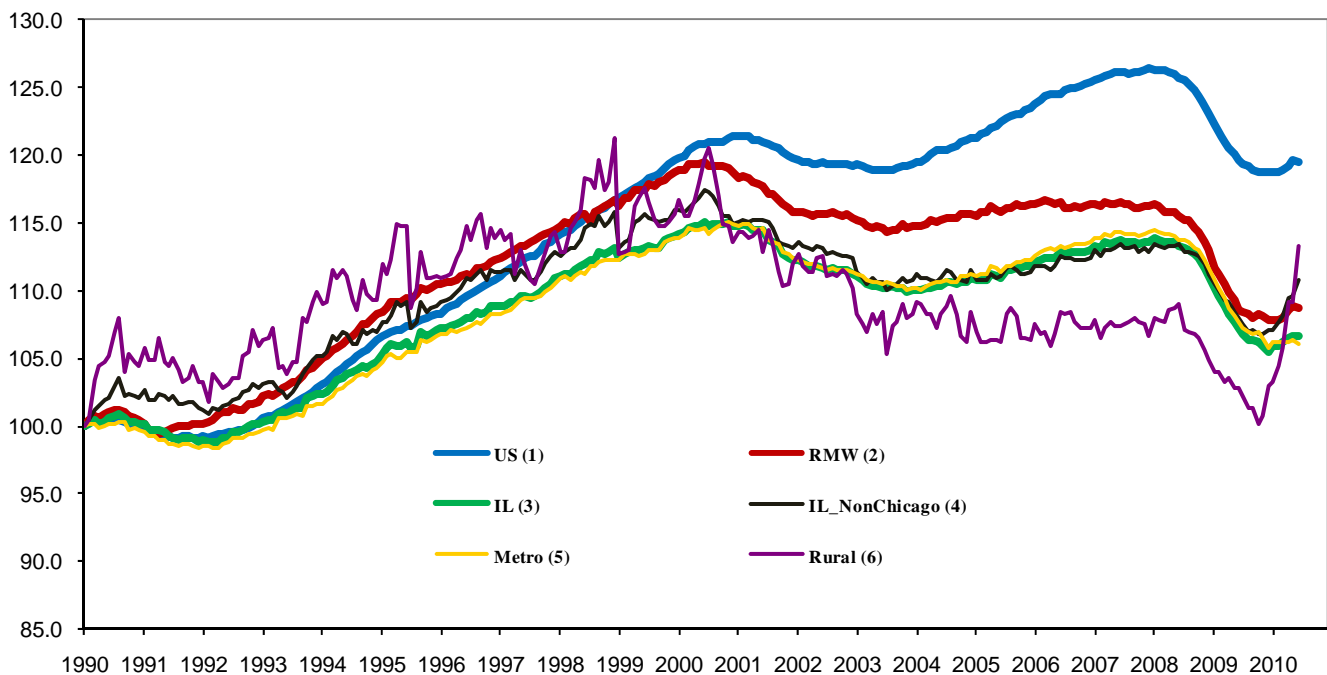
State, Downstate & Metro

- Illinois shed 200 jobs in June 2010 leaving employment unchanged compared with a revised 16,700 job gain in May. This is the first time Illinois did not add jobs this year, as modest hiring by businesses only partly offset the end of Census jobs.
- Illinois has lost 368,200 jobs since the economic crisis developed in December, 2007
- The major geographic divisions, Chicago-Downstate and Metro-Rural had mixed performances in June.
- Illinois Rural area added 19,700 jobs at 3.79% this month, compared to a revised 6,600 job gain in May. At the same time, Metro posted a job-loss of -19,900 jobs, at a rate of -0.39%, compared to a revised 10,100 job gain in the previous month.
- Chicago shed 17,400 jobs at 0.44% in June 2010, compared to a revised 6,800 job gain last month. On the other hand, Downstate added 17,200 jobs at 1.04%, compared to a revised 9,900 job gain in May.
- Over the last 12-months, Illinois recorded a payroll cut of 28,500 jobs at -0.50%. This is better than the worst month -5.89% in August 2009. In fact, starting from October 2009, the pace of 12-month job cuts has been declining in a row.
- In terms of the 12-month aggregated account, Metro registered a negative -1.53% growth by shedding 78,600 jobs whereas Rural added 50,100 jobs at 10.24%. Chicago lost 70,700 jobs at -1.76% whereas Downstate added 42,200 jobs at 2.59%.

MSA page (2-4)

- Illinois Metro posted a negative growth rate of -0.39% by shedding 19,900 jobs in the sixth month of 2010. Five out of the ten MSAs posted positive growth.
- In terms of growth performance, seven MSAs posted a net improvement from May to June, three declined in terms of rank.
- Rockford ranked first in terms of monthly growth performance, while Bloomington-Normal dropped from the first place to the last from May to June.
- Over the last 12-month period, Rockford grew the fastest at 1.08% by adding 1,500 jobs. Of the eight MSAs that posted negative growth rates, Metro-East had the greatest percentage loss of -1.87% by shedding 4,400 jobs. This is the first time that Decatur was not in the last place since March 2010.

Total non-farm Employment growth Jan 1990 – June 2010



Talking Points

State, Downstate & Metro

- While the average growth for Illinois between 1990 and 2008 was 0.04%, the average from December 2007 to June 2010 is -0.20%, which is worse than the performance during the 2000-2001 downturns.
- Since the economic crisis in December, 2007, the average growth for Metro is -0.24 while for Rural is 0.18%. The same rate for Downstate is -0.07% while for Upstate is -0.26%.
- Over the last 12-month period, the average growth rate for Metro was -0.13% and for Rural it was 0.65%.
- Illinois performed worse than the RMW and the nation in terms of yearly aggregated trend in 2009, but so far in 2010, Illinois's performance is better than both RMW and the nation.
- Downstate registered a 0.55% average growth rate in the first six month of 2010 compared to an average gain of 0.10% growth in 2007, -0.17% decline in 2008, and -0.32% decline in 2009.

By MSA

Market Area	June 2010 Number of Jobs	May 2010 – June 2010			Last 12 months	
		Growth compared to Illinois	Growth Rate %	Number Of Jobs	Growth Rate %	Number of Jobs
Bloomington-Normal (B-N)	88,500	-	-0.25	-200	-1.19	-1,100
Champaign-Urbana (C-U-R)	108,600	-	-1.43	-1,600	-0.59	-600
Chicago	3,946,300	-	-0.44	-17,400	-1.76	-70,700
Davenport-Rock Island-Moline (D-R-M)	178,400	+	0.06	100	-0.48	-900
Decatur	51,900	+	0.66	300	-1.46	-800
Kankakee	43,200	-	-0.21	-100	0.58	200
Peoria	176,300	-	-0.05	-100	-0.38	-700
Rockford	144,500	+	0.10	200	1.08	1,500
Springfield	109,100	+	0.07	100	-1.18	-1,300
Metro-East	231,400	-	-0.51	-1,200	-1.87	-4,400
Illinois			0.00	-200	-0.50	-28,500

MSA League Tables*: Non-farm Employment Growth Rate

Monthly growth:

Rank	May 2010	June 2010	Rank	Change**
1	Bloomington-Normal(0.91%)	Rockford (0.76%)	1	↑(+3)
2	Peoria (0.65%)	Champaign-Urbana-Rantoul(0.53%)	2	↑(+6)
3	Metro-East (0.47%)	Davenport-Rock Island-Moline (0.33%)	3	↑(+2)
4	Rockford (0.43%)	Peoria (0.23%)	4	↓(-2)
5	Davenport-Rock Island-Moline (0.19%)	Kankakee (0.23%)	5	↑(+1)
6	Kankakee (0.18%)	Chicago (0.12%)	6	↑(+1)
7	Chicago (0.02%)	Metro-East (0.09%)	7	↓(-4)
8	Champaign-Urbana-Rantoul (-0.01%)	Decatur (-0.03%)	8	↑(+1)
9	Decatur(-0.17%)	Springfield (-0.29%)	9	↑(+1)
10	Springfield (-0.37%)	Bloomington-Normal (-0.64%)	10	↓(-9)

Growth over last 12-months:

Rank	May 2010	June 2010	Rank	Change**
1	Kankakee (0.7%)	Rockford (1.08%)	1	↑(+1)
2	Rockford (0.48%)	Kankakee (0.58%)	2	↓(-1)
3	Champaign-Urbana-Rantoul (-0.55%)	Peoria (-0.38%)	3	↑(+3)
4	Bloomington-Normal (-0.97%)	Davenport-Rock Island-Moline (-0.48%)	4	↑(+1)
5	Davenport-Rock Island-Moline (-0.99%)	Champaign-Urbana-Rantoul (-0.59%)	5	↓(-2)
6	Peoria (-1.21%)	Springfield (-1.18%)	6	↑(+1)
7	Springfield (-1.67%)	Bloomington-Normal (-1.19%)	7	↓(-3)
8	Chicago (-1.8%)	Decatur (-1.46%)	8	↑(+2)
9	Metro-East (-1.87%)	Chicago (-1.76%)	9	↓(-1)
10	Decatur (-3.46%)	Metro-East (-1.87%)	10	↓(-1)

Talking Points

MSA League Tables

- The most remarkable upward move in June was Champaign-Urbana-Rantoul (8th to 2nd).
- Rockford (4th to 1st), Davenport-Rock Island-Moline (5th to 3rd), Kankakee (6th to 5th), and Chicago (7th to 6th), Decatur (9th to 8th) and Springfield (10th to 9th) all gained in terms of rank from last month.
- Bloomington-Normal (1st to 10th) experienced the deepest fall again this month.
- Metro-East (3rd to 7th), Peoria (2nd to 4th) also moved down in terms of rank.
- In the 12 months growth league table, upward moves were recorded for Peoria (6th to 3rd), Decatur (10th to 8th), Springfield (7th to 6th) and Rockford (2nd to 1st), while downward moves were recorded for Bloomington-Normal (4th to 7th), Champaign-Urbana-Rantoul (3rd to 5th), Metro-East (9th to 10th), Kankakee (1st to 2nd), and Chicago (8th to 9th).
- This is the first time that Kankakee dropped from the first place and the first time that Decatur was not in the last place since March 2010.

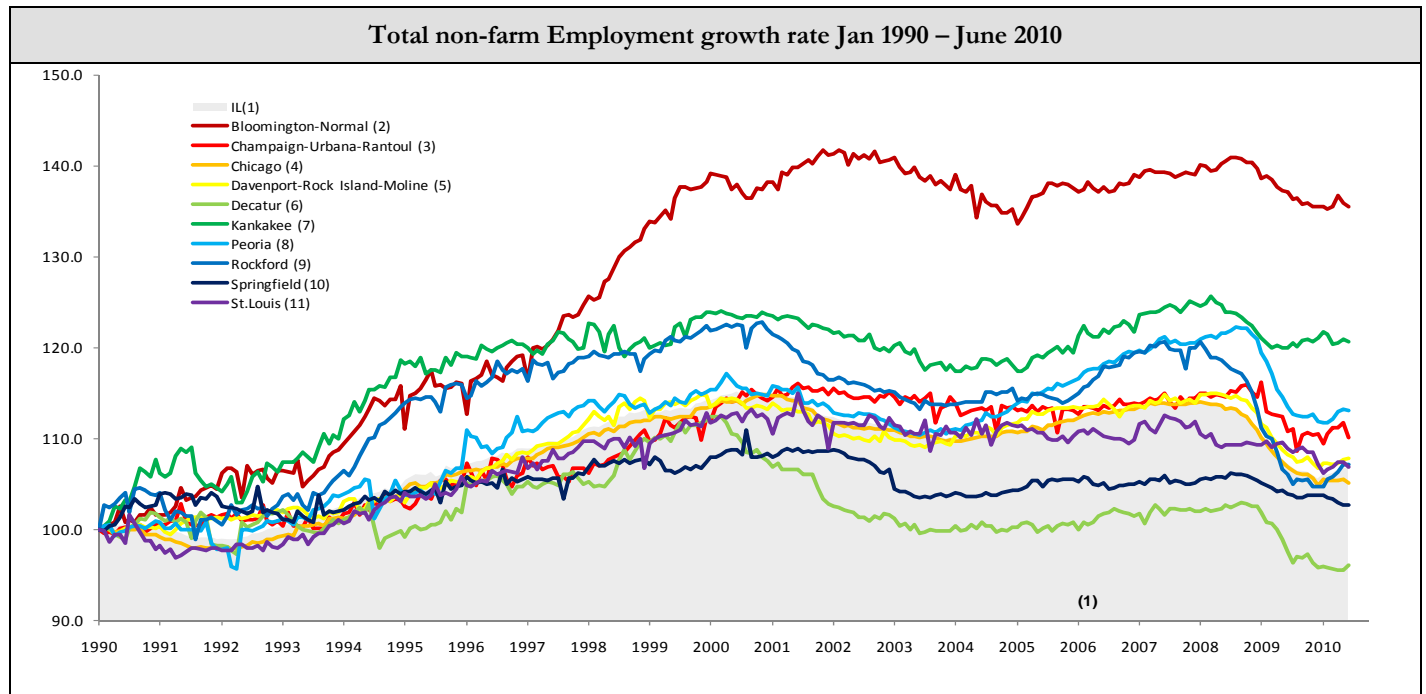
*MSA League Tables are based on revised employment data. For instances of equal growth rate for multiple MSAs ranks are decided based on change of growth rate from previous month.

**Changes indicate change in rank position compared to previous month and correspond to the MSA at the right column. Rise is indicated by a '↑' and decline by a '↓' and for an unchanged position a '↔' is used. Figures in parenthesis indicate relative rank change from previous month.

Shaded area on above chart represents Illinois growth.

June 2010 MSA Employment by Sectors (000s) *										
Market Area	Construction	Manufacturing	Trade, transportation & utilities	Information	Financial activities	Professional & business services	Education & health	Leisure & hospitality	Other Services	Government
Bloomington-Normal	2.68 (3.0%)	4.09 (4.6%)	13.59 (15.4%)	1.00 (1.1%)	12.41 (14%)	16.55 (18.7%)	9.91 (11.2%)	9.69 (10.9%)	3.45 (3.9%)	15.2 (17.2%)
Champaign-Urbana	3.45 (3.2%)	8.10 (7.5%)	17.83 (16.4%)	2.28 (2.1%)	4.44 (4.1%)	7.62 (7.0%)	13.41 (12.3%)	10.26 (9.4%)	3.31 (3.0%)	38.15 (35.1%)
Chicago	127.38 (3.2%)	371.8 (9.4%)	800.55 (20.3%)	78.09 (2%)	283.1 (7.2%)	629.06 (15.9%)	586.18 (14.9%)	357.98 (9.1%)	177.46 (4.5%)	537.88 (13.6%)
Davenport-Rock Island-Moline	7.93 (4.4%)	21.83 (12.2%)	37.96 (21.3%)	2.92 (1.6%)	8.30 (4.7%)	20.47 (11.5%)	26.03 (14.6%)	17.46 (9.8%)	7.42 (4.2%)	27.67 (15.5%)
Decatur	3.10 (6.0%)	10.22 (19.7%)	10.92 (21.1%)	0.80 (1.5%)	1.99 (3.8%)	3.47 (6.7%)	8.13 (15.7%)	4.59 (8.9%)	2.63 (5.1%)	5.97 (11.5%)
Kankakee	1.31 (3.0%)	4.86 (11.3%)	10.5 (24.3%)	0.60 (1.4%)	1.80 (4.2%)	2.65 (6.1%)	8.59 (19.9%)	3.93 (9.1%)	1.81 (4.2%)	7.13 (16.5%)
Peoria	8.34 (4.7%)	25.78 (14.6%)	32.09 (18.2%)	2.37 (1.3%)	7.78 (4.4%)	20.62 (11.7%)	33.46 (19%)	16.54 (9.4%)	7.55 (4.3%)	21.76 (12.3%)
Rockford	5.27 (3.6%)	27.17 (18.8%)	28.32 (19.6%)	1.85 (1.3%)	5.88 (4.1%)	14.4 (10%)	23.21 (16.1%)	12.01 (8.3%)	9.18 (6.4%)	16.92 (11.7%)
Springfield	3.86 (3.5%)	3.18 (2.9%)	16.66 (15.3%)	2.20 (2.0%)	7.49 (6.9%)	10.79 (9.9%)	17.91 (16.4%)	9.84 (9.0%)	6.55 (6.0%)	30.67 (28.1%)
IL	200.86 (3.6%)	563.1 (10%)	1135.65 (20.2%)	102.77 (1.8%)	364.63 (6.5%)	785.27 (14%)	834.4 (14.8%)	510.02 (9.1%)	256.21 (4.6%)	860.52 (15.3%)

* The Illinois Department of Employment Security does not collect sector employment data for Metro-East



MSA DESCRIPTION: **Bloomington-Normal (B-N):** McLean Co. **Champaign-Urbana (C-U-R):** Champaign Co., Ford Co. & Piatt Co. **Chicago:** Cook Co. IL, DeKalb Co. IL, DuPage Co. IL, Grundy Co. IL, Kane Co. IL, Kendall Co. IL, Lake Co. IL, McHenry Co. IL, Will Co. IL & Kenosha Co. WI **Davenport-Moline-Rock Island (D-R-M):** Henry Co. IL, Mercer Co. IL, Rock Island Co. IL & Scott Co. IA **Decatur:** Macon Co. **Kankakee:** Kankakee Co. **Metro-East:** Bond Co., Calhoun Co., Clinton Co., Jersey Co., Macoupin Co., Madison Co., Monroe Co. & St. Clair Co. **Peoria-Pekin (Peoria):** Marshall Co., Peoria Co., Stark Co., Tazewell Co. & Woodford Co. **Rockford:** Boone Co. & Winnebago Co. **Springfield:** Menard Co. & Sangamon Co. The MSA data (unless noted) were seasonally adjusted to be consistent with state totals.

The Illinois Economic Observatory and Illinois Jobs Index is part of the Institute of Government and Public Affairs at the University of Illinois.