

Illinois Job Index:

MSA Report

Release 12/06/2010	data Jan 1990 / Oct 2010	Issue 13.11	www.real.illinois.edu
-----------------------	-----------------------------	----------------	-----------------------

Note: IDES revised their estimates for the number of jobs at the beginning of 2010.

As a companion to the Oct 2010 Illinois Job Index that reports a positive rating, this MSA Report provides a localized picture on Illinois job growth and allows for comparisons between local economies, Illinois, the Nation and the Rest of the Midwest.

Nov 2010	Total non-farm employment	Oct 2010 Number of Jobs	Sep 2010 – Oct2010		Last 12 months	
			Growth Rate (%)	Number of Jobs	Growth Rate (%)	Number of Jobs
	Nation	130,462,000	0.12	151,000	0.64	829,000
	Rest of Midwest (RMW)	18,533,700	0.26	47,200	0.13	24,100
	Illinois	5,611,900	0.14	8,000	0.26	14,400
	Illinois Metro	5,043,138	0.00	0	-1.27	-64,700
	Illinois non-Metro (Rural)	568,762	1.43	8,000	16.14	79,100
	Illinois Chicago (Upstate)	3,916,350	-0.02	-800	-1.49	-59,200
	Illinois non-Chicago	1,695,550	0.52	8,800	4.54	73,600

The monthly Illinois Job Index and MSA Report are provided as tools for elected officials, policy leaders and the public. We can better understand the Illinois economy and business climate by comparing and measuring Illinois employment growth rates against those of the Rest of the Midwest (RMW: Indiana, Iowa, Michigan, Missouri, Ohio and Wisconsin) and the Nation. Data and analysis is provided by the Illinois Economic Observatory / Regional Economics Applications Laboratory, University of Illinois. The MSA data (unless noted) were seasonally adjusted to be consistent with state totals.

Talking Points

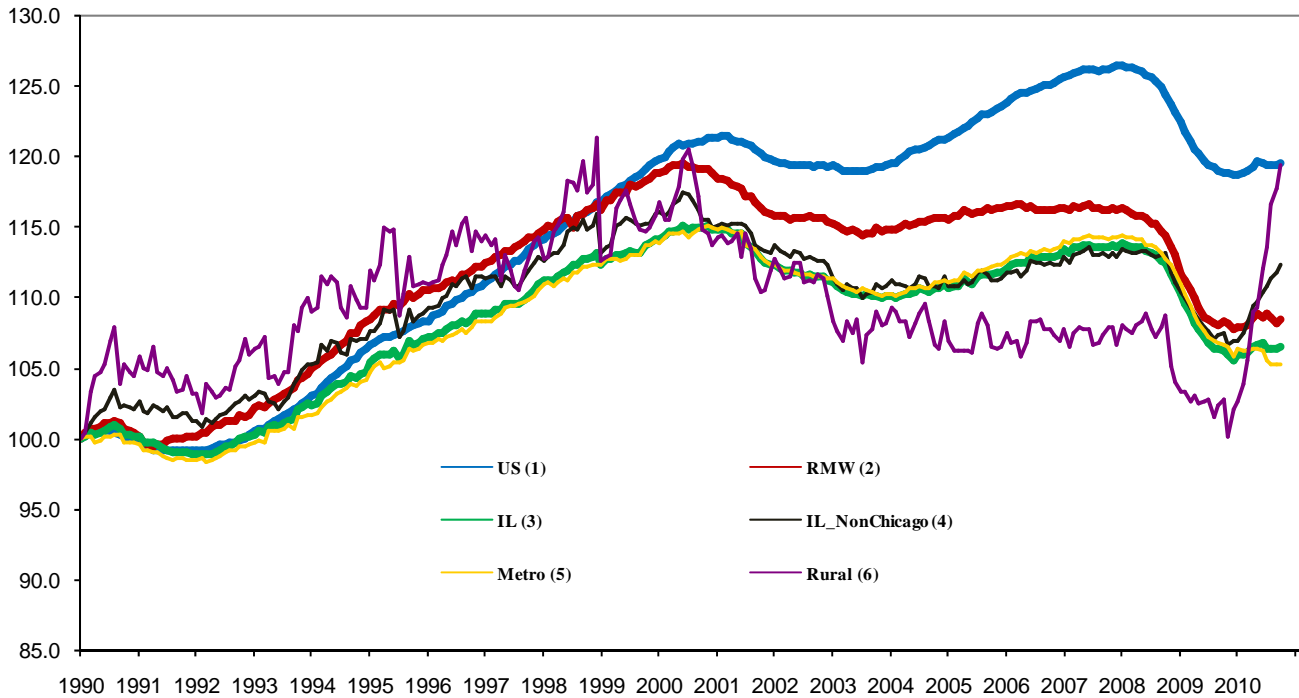
State, Downstate & Metro

- Illinois added 8,000 jobs in Oct 2010 at a rate of 0.14%, compared with a revised 3,600 job gain in September. The manufacturing sector lost jobs this month after seven consecutive monthly gains this year.
- Illinois has lost 374,100 jobs since the economic crisis developed in December, 2007
- The major geographic divisions, Chicago-Downstate and Metro-Rural had mixed performances in September.
- Illinois Rural area added 8,000 jobs at 1.43% this month, compared to a revised 5,300 job gain in September. In August, Rural recovered to the same employment level of June 2000. This month, Rural maintained the growth trend. At the same time, Metro remained unchanged in number of jobs, compared to a revised -1,700 job loss in the previous month.
- Chicago shed 800 jobs at -0.02% in Oct 2010, compared to a revised -2,900 job loss last month. On the other hand, Downstate added 8,800 jobs at 0.52%, compared to a revised 6,500 job gain in September.
- Over the last 12-months, Illinois recorded a payroll increase of 14,400 jobs at 0.26%. This is the second consecutive monthly year-over-year increase since April 2008.
- In terms of the 12-month aggregated account, Metro registered a negative -1.27% growth by shedding 64,700 jobs whereas Rural added 79,100 jobs at 16.14%. Chicago lost 59,200 jobs at -1.49% whereas Downstate added 73,600 jobs at 4.54%.

MSA page (2-4)

- Illinois Metro remained unchanged in the tenth month of 2010. Five out of the ten MSAs posted positive growth in October.
- In terms of growth performance, three MSAs posted a net improvement from September to October, five declined in terms of rank.
- Rockford ranked first in terms of monthly growth performance, while Peoria dropped to the last place.
- Over the last 12-month period, Rockford grew the fastest at 0.27% by adding 400 jobs. Of the six MSAs that posted negative growth rates, Metro-East had the greatest percentage loss of -1.94% by shedding 4,600 jobs.

Total non-farm Employment growth Jan 1990 – Oct 2010



Talking Points

State, Downstate & Metro

- While the average growth for Illinois between 1990 and 2008 was 0.04%, the average from December 2007 to Oct 2010 is -0.18%, which is worse than the performance during the 2000-2001 downturns.
- Since the economic crisis in December, 2007, the average growth for Metro is -0.23 while for Rural is 0.30%. The same rate for Downstate is -0.02% while for Upstate is -0.25%.
- Over the last 12-month period, the average growth rate for Metro was -0.11% and for Rural it was 1.27%.
- Illinois performed worse than the RMW and the nation in terms of yearly aggregated trend in 2009, but so far in 2010, Illinois's performance is better than the RMW and the nation.
- Downstate registered a 0.49% average growth rate in the first tenmonth of 2010 compared to an average gain of 0.10% growth in 2007, -0.17% decline in 2008, and -0.32% decline in 2009.

By MSA

Market Area	Oct 2010 Number of Jobs	Sep 2010 –Oct 2010			Last 12 months	
		Growth compared to Illinois	Growth Rate %	Number Of Jobs	Growth Rate %	Number of Jobs
Bloomington-Normal (B-N)	88,600	+	0.23	200	0.04	0
Champaign-Urbana (C-U-R)	108,600	+	0.20	200	-0.21	-200
Chicago	3,916,400	-	-0.02	-800	-1.49	-59,200
Davenport-Rock Island-Moline (D-R-M)	178,400	-	-0.05	-100	0.16	300
Decatur	51,800	-	-0.10	0	-1.29	-700
Kankakee	42,900	+	0.31	100	-0.66	-300
Peoria	175,000	-	-0.14	-300	0.16	300
Rockford	142,000	+	0.62	900	0.27	400
Springfield	109,500	-	0.05	100	-0.60	-700
Metro-East	229,900	-	-0.12	-300	-1.94	-4,600
Illinois			0.14	8,000	0.26	14,400

MSA League Tables*: Non-farm Employment Growth Rate

Monthly growth:

Rank	Sep2010	Oct 2010	Rank	Change**
1	Champaign-Urbana-Rantoul(1.7%)	Rockford (0.62%)	1	↑(+9)
2	Springfield (0.42%)	Kankakee(0.31%)	2	↑(+3)
3	Davenport-Rock Island-Moline (0.37%)	Bloomington-Normal (0.23%)	3	↑(+6)
4	Metro-East (0.15%)	Champaign-Urbana-Rantoul (0.2%)	4	↓(-3)
5	Kankakee (0%)	Springfield (0.05%)	5	↓(-3)
6	Chicago (-0.07%)	Chicago (-0.02%)	6	↔(+0)
7	Peoria (-0.09%)	Davenport-Rock Island-Moline (-0.05%)	7	↓(-4)
8	Decatur (-0.1%)	Decatur (-0.1%)	8	↔(+0)
9	Bloomington-Normal(-0.28%)	Metro-East (-0.12%)	9	↓(-5)
10	Rockford (-1.17%)	Peoria (-0.14%)	10	↓(-3)

Growth over last 12-months:

Rank	Sep 2010	Oct 2010	Rank	Change**
1	Davenport-Rock Island-Moline (0.36%)	Rockford (0.27%)	1	↑(+5)
2	Peoria (0.13%)	Davenport-Rock Island-Moline (0.16%)	2	↓(-1)
3	Bloomington-Normal (-0.27%)	Peoria (0.16%)	3	↓(-1)
4	Champaign-Urbana-Rantoul (-0.45%)	Bloomington-Normal (0.04%)	4	↓(-1)
5	Springfield (-0.5%)	Champaign-Urbana-Rantoul (-0.21%)	5	↓(-1)
6	Rockford (-0.57%)	Springfield (-0.6%)	6	↓(-1)
7	Decatur (-0.74%)	Kankakee (-0.66%)	7	↑(+1)
8	Kankakee (-1.14%)	Decatur (-1.29%)	8	↓(-1)
9	Chicago (-1.63%)	Chicago (-1.49%)	9	↔(+0)
10	Metro-East (-2.2%)	Metro-East (-1.94%)	10	↔(+0)

Talking Points

MSA League Tables

- Metro-East(4th to 9th) experienced the deepest fall this month.
- Champaign-Urbana-Rantoul (1st to 4th), Springfield(2nd to 5th), Davenport-Rock Island-Moline (3rd to 7th) and Peoria(7th to 10th)all dropped in terms of rank from last month.
- The most remarkable upward move in October was Rockford(10th to 1st).
- Kankakee(5th to 2nd),Bloomington-Normal(9th to 3rd)also gained in terms of rank.
- In the 12 months growth league table, upward moves were recorded for Rockford(6th to 1st), Kankakee (8th to 7th) while downward moves were recorded for Peoria (2nd to 3rd),Davenport-Rock Island-Moline(1st to 2nd), Bloomington-Normal(3rd to 4th), Champaign-Urbana-Rantoul(4th to 5th), Springfield(5th to 6th) and Decatur (7th to 8th).
- Compared with last month, Metro-East kept its last place respectively in terms of rank.

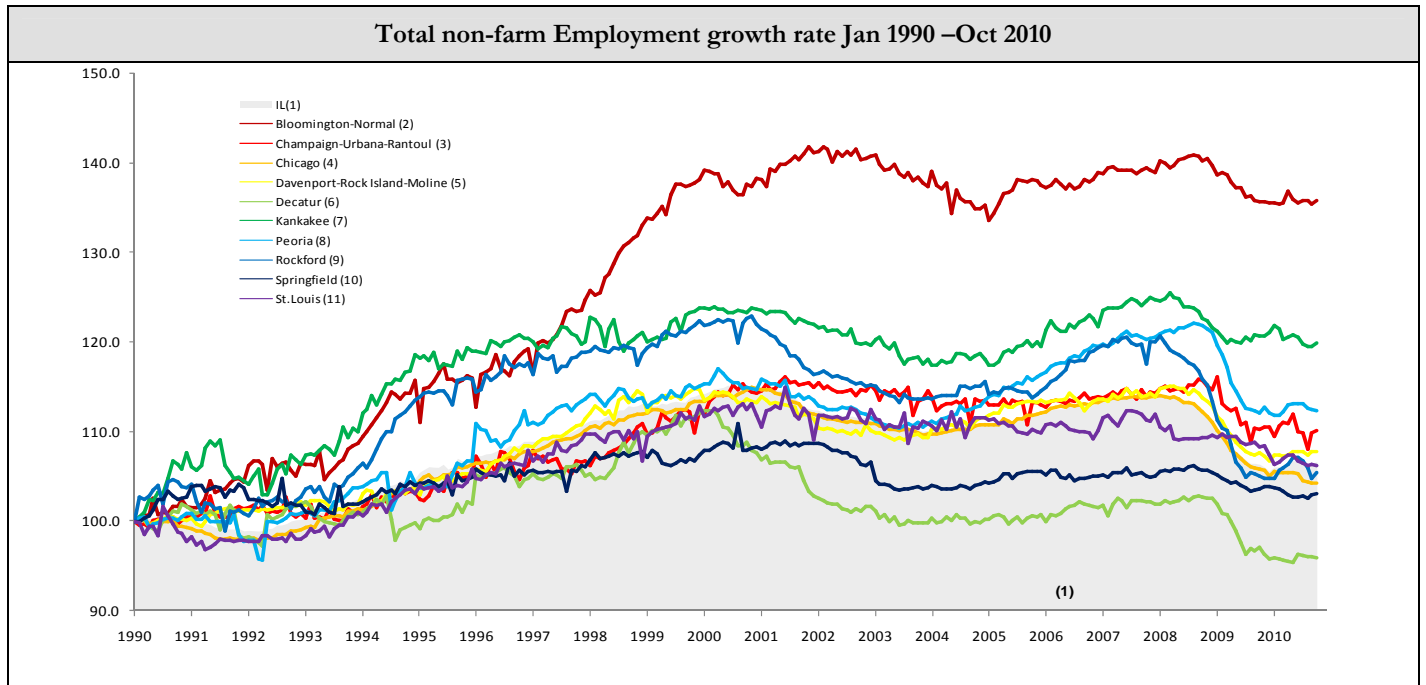
*MSA League Tables are based on revised employment data. For instances of equal growth rate for multiple MSAs ranks are decided based on change of growth rate from previous month.

**Changes indicate change in rank position compared to previous month and correspond to the MSA at the right column. Rise is indicated by a '↑' and decline by a '↓' and for an unchanged position a '↔' is used. Figures in parenthesis indicate relative rank change from previous month.

Shaded area on above chart represents Illinois growth.

Oct 2010 MSA Employment by Sectors (000s) *										
Market Area	Construction	Manufacturing	Trade, transportation & utilities	Information	Financial activities	Professional & business services	Education & health	Leisure & hospitality	Other Services	Government
Bloomington-Normal	2.92 (3.3%)	4.07 (4.6%)	13.37 (15.1%)	1.01 (1.1%)	12.33 (13.9%)	16.92 (19.1%)	9.93 (11.2%)	9.47 (10.7%)	3.43 (3.9%)	15.26 (17.2%)
Champaign-Urbana	3.64 (3.4%)	7.97 (7.3%)	17.53 (16.1%)	2.68 (2.5%)	4.48 (4.1%)	7.54 (6.9%)	13.48 (12.4%)	10.03 (9.2%)	3.24 (3.0%)	37.85 (34.9%)
Chicago	124.56 (3.2%)	370.24 (9.5%)	795.58 (20.3%)	78.54 (2.0%)	280.65 (7.2%)	621.93 (15.9%)	585.81 (15.0%)	355.67 (9.1%)	175.89 (4.5%)	530.88 (13.6%)
Davenport-Rock Island-Moline	0.83 (2.8%)	4.75 (16.2%)	6.89 (23.4%)	0.30 (1.0%)	1.41 (4.8%)	2.17 (7.4%)	3.14 (10.7%)	2.28 (7.7%)	1.23 (4.2%)	6.36 (21.6%)
Decatur	8.23 (4.6%)	22.22 (12.5%)	37.93 (21.3%)	2.89 (1.6%)	8.22 (4.6%)	20.83 (11.7%)	26.11 (14.6%)	17.35 (9.7%)	7.51 (4.2%)	27.16 (15.2%)
Kankakee	3.11 (6.0%)	10.3 (19.9%)	10.71 (20.7%)	0.80 (1.5%)	1.99 (3.8%)	3.53 (6.8%)	8.11 (15.7%)	4.52 (8.7%)	2.56 (4.9%)	6.10 (11.8%)
Peoria	1.43 (3.3%)	4.85 (11.3%)	10.25 (23.9%)	0.60 (1.4%)	1.79 (4.2%)	2.66 (6.2%)	8.61 (20.1%)	3.87 (9.0%)	1.71 (4.0%)	7.18 (16.7%)
Rockford	8.58 (4.9%)	25.80 (14.7%)	32.0 (18.3%)	2.42 (1.4%)	7.68 (4.4%)	20.59 (11.8%)	33.08 (18.9%)	16.34 (9.3%)	7.50 (4.3%)	21.14 (12.1%)
Springfield	5.19 (3.7%)	25.68 (18.1%)	27.57 (19.4%)	1.96 (1.4%)	5.89 (4.2%)	14.34 (10.1%)	23.35 (16.4%)	11.92 (8.4%)	8.91 (6.3%)	17.46 (12.3%)
IL	203.48 (3.6%)	562.57 (10%)	1130.38 (20.1%)	105.13 (1.9%)	359.42 (6.4%)	788.18 (14.0%)	835.18 (14.9%)	506.08 (9.0%)	259.86 (4.6%)	853.74 (15.2%)

* The Illinois Department of Employment Security does not collect sector employment data for Metro-East



MSA DESCRIPTION: **Bloomington-Normal (B-N):** McLean Co. **Champaign-Urbana (C-U-R):** Champaign Co., Ford Co. & Piatt Co. **Chicago:** Cook Co. IL, DeKalb Co. IL, DuPage Co. IL, Grundy Co. IL, Kane Co. IL, Kendall Co. IL, Lake Co. IL, McHenry Co. IL, Will Co. IL & Kenosha Co. WI **Davenport-Moline-Rock Island (D-R-M):** Henry Co. IL, Mercer Co. IL, Rock Island Co. IL & Scott Co. IA **Decatur:** Macon Co. **Kankakee:** Kankakee Co. **Metro-East:** Bond Co., Calhoun Co., Clinton Co., Jersey Co., Macoupin Co., Madison Co., Monroe Co. & St. Clair Co. **Peoria-Pekin (Peoria):** Marshall Co., Peoria Co., Stark Co., Tazewell Co. & Woodford Co. **Rockford:** Boone Co. & Winnebago Co. **Springfield:** Menard Co. & Sangamon Co. The MSA data (unless noted) were seasonally adjusted to be consistent with state totals.

