

Illinois Job Index:

MSA Report

Release 10/04/2010	data Jan 1990 / Aug 2010	Issue 13.9	www.real.illinois.edu
------------------------------	------------------------------------	----------------------	------------------------------

Note: IDES revised their estimates for the number of jobs at the beginning of 2010.

As a companion to the July 2010 Illinois Job Index that reports an unchanged rating, this MSA Report provides a localized picture on Illinois job growth and allows for comparisons between local economies, Illinois, the Nation and the Rest of the Midwest.

Sep 2010	Total non-farm employment	Aug 2010 Number of Jobs	July 2010 – Aug 2010		Last 12 months	
			Growth Rate (%)	Number of Jobs	Growth Rate (%)	Number of Jobs
	Nation	130,311,000	-0.04	-54,000	0.18	229,000
	Rest of Midwest (RMW)	18,536,400	-0.39	-72,000	0.26	47,500
	Illinois	5,595,800	-0.07	-4,200	-0.13	-7,200
	Illinois Metro	5,042,500	-0.40	-20,200	-1.52	-78,000
	Illinois non-Metro (Rural)	553,300	2.98	16,000	14.66	70,700
	Illinois Chicago (Upstate)	3,917,600	-0.35	-13,700	-1.76	-70,300
	Illinois non-Chicago	1,678,200	0.57	9,500	3.91	63,100

The monthly Illinois Job Index and MSA Report are provided as tools for elected officials, policy leaders and the public. We can better understand the Illinois economy and business climate by comparing and measuring Illinois employment growth rates against those of the Rest of the Midwest (RMW: Indiana, Iowa, Michigan, Missouri, Ohio and Wisconsin) and the Nation. Data and analysis is provided by the Illinois Economic Observatory / Regional Economics Applications Laboratory, University of Illinois. The MSA data (unless noted) were seasonally adjusted to be consistent with state totals.

Talking Points

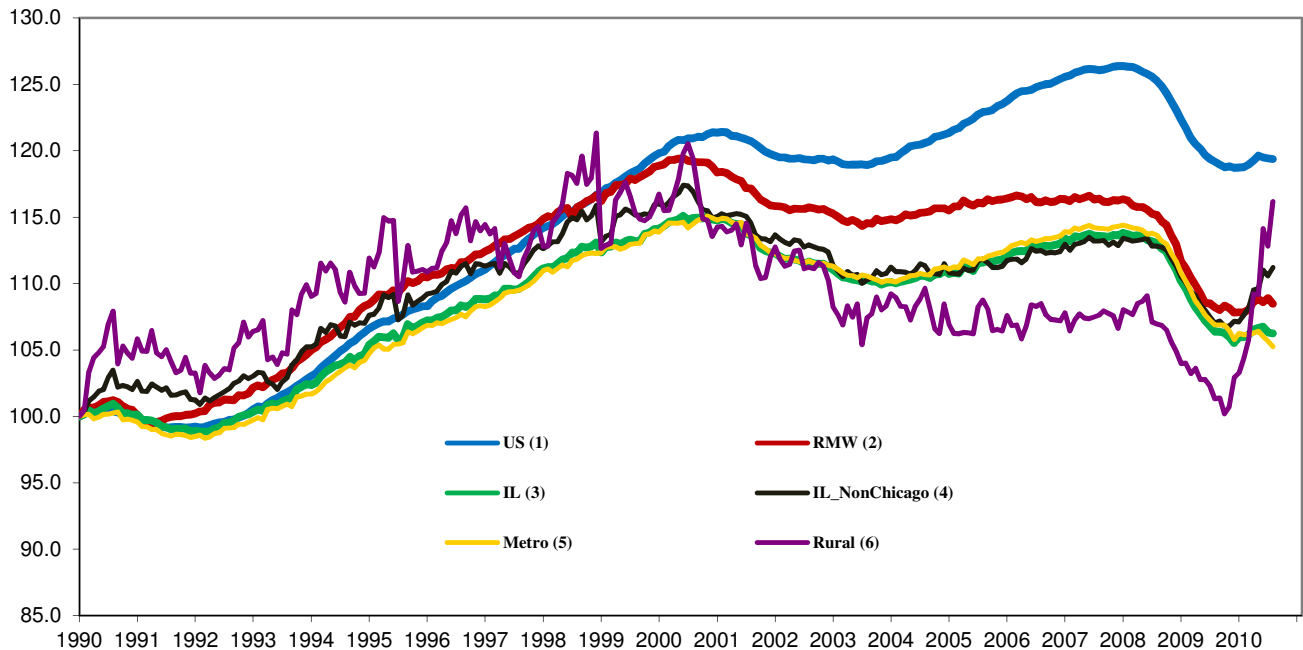
State, Downstate & Metro

- Illinois shed 4,200 jobs in Aug 2010 at a rate of -0.07%, compared with a revised 21,900 job gain in July. Although construction gain jobs due to construction workers returning after the strikes in July, private-sector job growth remained almost unchanged in August.
- Illinois has lost 351,700 jobs since the economic crisis developed in December, 2007
- The major geographic divisions, Chicago-Downstate and Metro-Rural had mixed performances in August.
- Illinois Rural area added 16,000 jobs at 2.98% this month, compared to a revised -6,300 job loss in July. At the same time, Metro posted a job-loss of -20,200 jobs, at a rate of -0.40%, compared to a revised -15,600 job loss in the previous month.
- Chicago shed 13,700 jobs at -0.35% in Aug 2010, compared to a revised -15,000 job loss last month. On the other hand, Downstate added 9,500 jobs at 0.57%, compared to a revised -6,900 job loss in July.
- Over the last 12-months, Illinois recorded a payroll cut of 7,200 jobs at -0.13%. This is better than the worst month -5.89% in August 2009. In fact, starting from October 2009, the pace of 12-month job cuts has been declining in a row.
- In terms of the 12-month aggregated account, Metro registered a negative -1.52% growth by shedding 78,000 jobs whereas Rural added 70,700 jobs at 14.66%. Chicago lost 70,300 jobs at -1.76% whereas Downstate added 63,100 jobs at 3.91%.

MSA page (2-4)

- Illinois Metro posted a negative growth rate of -0.40% by shedding 20,200 jobs in the eighth month of 2010. This is the most significant job loss for the Metro this year. Only one out of the ten MSAs posted positive growth in August.
- In terms of growth performance, four MSAs posted a net improvement from July to August, five declined in terms of rank.
- Bloomington-Normal ranked first in terms of monthly growth performance, while Champaign-Urbana-Rantoul dropped to the last place.
- Over the last 12-month period, seven out of ten MSAs kept their places compared to last month. Of the eight MSAs that posted negative growth rates, Metro-East had the greatest percentage loss of -2.35% by shedding 5,500 jobs.

Total non-farm Employment growth Jan 1990 – Aug 2010



Talking Points

State, Downstate & Metro

- While the average growth for Illinois between 1990 and 2008 was 0.04%, the average from December 2007 to Aug 2010 is -0.20%, which is worse than the performance during the 2000-2001 downturns.
- Since the economic crisis in December, 2007, the average growth for Metro is -0.25 while for Rural is 0.24%. The same rate for Downstate is -0.05% while for Upstate is -0.27%.
- Over the last 12-month period, the average growth rate for Metro was -0.13% and for Rural it was 1.16%.
- Illinois performed worse than the RMW and the nation in terms of yearly aggregated trend in 2009, but so far in 2010, Illinois's performance is better than the nation.
- Downstate registered a 0.46% average growth rate in the first eight month of 2010 compared to an average gain of 0.10% growth in 2007, -0.17% decline in 2008, and -0.32% decline in 2009.

By MSA

Market Area	Aug 2010 Number of Jobs	July 2010 – Aug 2010			Last 12 months	
		Growth compared to Illinois	Growth Rate %	Number Of Jobs	Growth Rate %	Number of Jobs
Bloomington-Normal (B-N)	88,700	+	0.02	20	-0.47	-400
Champaign-Urbana (C-U-R)	106,800	-	-1.43	-1,500	-0.33	-400
Chicago	3,917,600	-	-0.35	-13,700	-1.76	-70,300
Davenport-Rock Island-Moline (D-R-M)	177,800	-	-0.39	-700	-0.06	-100
Decatur	51,900	+	-0.05	-30	-0.86	-400
Kankakee	42,800	-	-0.25	-100	-0.59	-300
Peoria	175,500	-	-0.62	-1,100	0.07	100
Rockford	142,800	-	-1.33	-1,900	0.37	500
Springfield	108,800	-	-0.38	-400	-1.07	-1,200
Metro-East	229,800	-	-0.33	-800	-2.35	-5,500
Illinois			-0.07	-4,200	-0.13	-7,200

MSA League Tables*: Non-farm Employment Growth Rate

Monthly growth:

Rank	July 2010	Aug 2010	Rank	Change**
1	Bloomington-Normal(0.2%)	Bloomington-Normal(0.02%)	1	◀(+0)
2	Rockford (0.15%)	Decatur(-0.05%)	2	▲(+2)
3	Peoria (0.14%)	Kankakee (-0.25%)	3	▲(+7)
4	Decatur (0.12%)	Metro-East (-0.33%)	4	▲(+3)
5	Springfield (0.07%)	Chicago (-0.35%)	5	▲(+4)
6	Davenport-Rock Island-Moline (0.06%)	Springfield (-0.38%)	6	▼(-1)
7	Metro-East (-0.34%)	Davenport-Rock Island-Moline (-0.39%)	7	▼(-1)
8	Champaign-Urbana-Rantoul (-0.37%)	Peoria (-0.62%)	8	▼(-5)
9	Chicago(-0.38%)	Rockford (-1.33%)	9	▼(-7)
10	Kankakee (-0.71%)	Champaign-Urbana-Rantoul (-1.43%)	10	▼(-2)

Growth over last 12-months:

Rank	July 2010	Aug 2010	Rank	Change**
1	Rockford (2.27%)	Rockford (0.37%)	1	◀(+0)
2	Peoria (0.51%)	Peoria (0.07%)	2	◀(+0)
3	Davenport-Rock Island-Moline (-0.12%)	Davenport-Rock Island-Moline (-0.06%)	3	◀(+0)
4	Decatur (-0.19%)	Champaign-Urbana-Rantoul (-0.33%)	4	▲(+4)
5	Bloomington-Normal (-0.41%)	Bloomington-Normal (-0.47%)	5	◀(+0)
6	Kankakee (-0.66%)	Kankakee (-0.59%)	6	◀(+0)
7	Springfield (-1%)	Decatur (-0.86%)	7	▼(-3)
8	Champaign-Urbana-Rantoul (-1.01%)	Springfield (-1.07%)	8	▼(-1)
9	Chicago (-1.77%)	Chicago (-1.76%)	9	◀(+0)
10	Metro-East (-1.84%)	Metro-East (-2.35%)	10	◀(+0)

Talking Points

MSA League Tables

- Rockford (2nd to 9th) experienced the deepest fall this month.
- Peoria (3rd to 8th), Champaign-Urbana-Rantoul (8th to 10th), Davenport-Rock Island-Moline (6th to 7th) and Springfield (5th to 6th) all dropped in terms of rank from last month.
- The most remarkable upward move in August was Kankakee (10th to 3rd).
- Chicago (9th to 5th), Metro-East (7th to 4th), Decatur (4th to 2nd) also gained in terms of rank.
- In the 12 months growth league table, upward moves were recorded for Champaign-Urbana-Rantoul (8th to 4th) while downward moves were recorded for Decatur (4th to 7th), Springfield (7th to 8th). In addition, Rockford, Peoria, Davenport-Rock Island-Moline, Bloomington-Normal, Kankakee, Chicago and Metro-East remained in their same places in terms of rank.
- Compared with last month, Rockford and Metro-East kept their first and last place respectively in terms of rank.

*MSA League Tables are based on revised employment data. For instances of equal growth rate for multiple MSAs ranks are decided based on change of growth rate from previous month.

**Changes indicate change in rank position compared to previous month and correspond to the MSA at the right column. Rise is indicated by a '▲' and decline by a '▼' and for an unchanged position a '◀' is used. Figures in parenthesis indicate relative rank change from previous month.

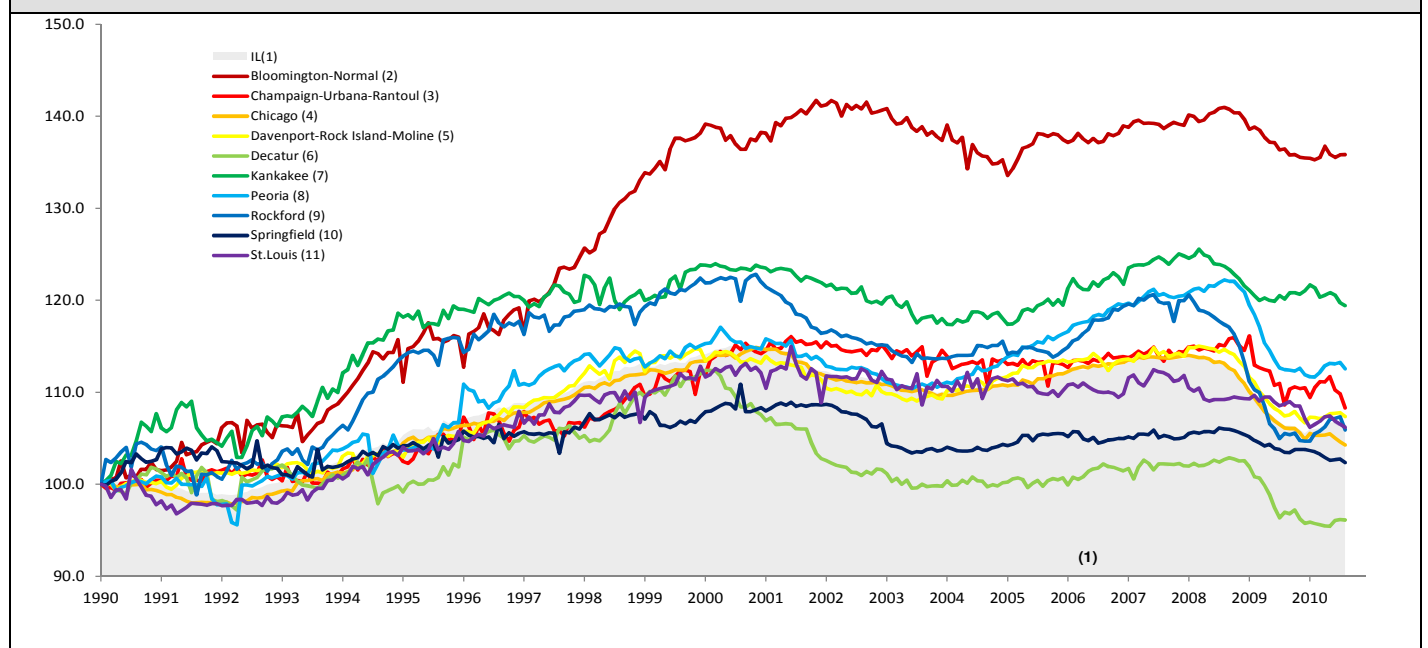
Shaded area on above chart represents Illinois growth.

Aug 2010 MSA Employment by Sectors (000s) *

Market Area	Construction	Manufacturing	Trade, transportation & utilities	Information	Financial activities	Professional & business services	Education & health	Leisure & hospitality	Other Services	Government
Bloomington-Normal	2.67 (3.0%)	4.13 (4.7%)	13.45 (15.2%)	1.00 (1.1%)	12.29 (13.9%)	16.82 (19%)	9.90 (11.2%)	9.67 (10.9%)	3.27 (3.7%)	15.57 (17.6%)
Champaign-Urbana	3.48 (3.3%)	7.99 (7.5%)	17.61 (16.5%)	2.47 (2.3%)	4.46 (4.2%)	7.66 (7.2%)	13.43 (12.6%)	10.14 (9.5%)	3.17 (3.0%)	36.56 (34.2%)
Chicago	123.45 (3.2%)	371.96 (9.5%)	798.81 (20.4%)	77.88 (2.0%)	280.75 (7.2%)	624.50 (15.9%)	585.49 (14.9%)	357.56 (9.1%)	173.69 (4.4%)	526.62 (13.4%)
Davenport-Rock Island-Moline	8.10 (4.6%)	21.85 (12.3%)	37.98 (21.4%)	2.90 (1.6%)	8.14 (4.6%)	20.66 (11.6%)	25.81 (14.5%)	17.32 (9.7%)	7.40 (4.2%)	27.55 (15.5%)
Decatur	3.20 (6.2%)	10.36 (20%)	10.72 (20.7%)	0.80 (1.5%)	1.98 (3.8%)	3.55 (6.8%)	8.05 (15.5%)	4.60 (8.9%)	2.43 (4.7%)	6.24 (12.0%)
Kankakee	1.34 (3.1%)	4.89 (11.4%)	10.32 (24.1%)	0.60 (1.4%)	1.79 (4.2%)	2.62 (6.1%)	8.55 (20.0%)	3.96 (9.3%)	1.63 (3.8%)	7.09 (16.6%)
Peoria	8.35 (4.8%)	25.65 (14.6%)	32.00 (18.2%)	2.37 (1.3%)	7.76 (4.4%)	20.5 (11.7%)	33.10 (18.9%)	16.46 (9.4%)	7.46 (4.3%)	21.80 (12.4%)
Rockford	5.07 (3.6%)	26.5 (18.6%)	27.53 (19.3%)	1.87 (1.3%)	5.83 (4.1%)	14.57 (10.2%)	23.33 (16.3%)	11.97 (8.4%)	8.96 (6.3%)	17.30 (12.1%)
Springfield	3.76 (3.5%)	3.16 (2.9%)	16.67 (15.3%)	2.23 (2.0%)	7.35 (6.8%)	10.84 (10%)	18.03 (16.6%)	9.81 (9.0%)	6.57 (6.0%)	30.62 (28.1%)
IL	201.91 (3.6%)	564.88 (10.1%)	1125.45 (20.1%)	103.79 (1.9%)	358.74 (6.4%)	786.8 (14.1%)	828.12 (14.8%)	514.70 (9.2%)	251.57 (4.5%)	853.00 (15.2%)

* The Illinois Department of Employment Security does not collect sector employment data for Metro-East

Total non-farm Employment growth rate Jan 1990 – Aug 2010



MSA DESCRIPTION: **Bloomington-Normal (B-N):** McLean Co. **Champaign-Urbana (C-U-R):** Champaign Co., Ford Co. & Piatt Co. **Chicago:** Cook Co. IL, DeKalb Co. IL, DuPage Co. IL, Grundy Co. IL, Kane Co. IL, Kendall Co. IL, Lake Co. IL, McHenry Co. IL, Will Co. IL & Kenosha Co. WI **Davenport-Moline-Rock Island (D-R-M):** Henry Co. IL, Mercer Co. IL, Rock Island Co. IL & Scott Co. IA **Decatur:** Macon Co. **Kankakee:** Kankakee Co. **Metro-East:** Bond Co., Calhoun Co., Clinton Co., Jersey Co., Macoupin Co., Madison Co., Monroe Co. & St. Clair Co. **Peoria-Pekin (Peoria):** Marshall Co., Peoria Co., Stark Co., Tazewell Co. & Woodford Co. **Rockford:** Boone Co. & Winnebago Co. **Springfield:** Menard Co. & Sangamon Co. The MSA data (unless noted) were seasonally adjusted to be consistent with state totals.

The Illinois Economic Observatory and Illinois Jobs Index is part of the Institute of Government and Public Affairs at the University of Illinois.