

Illinois Job Index:

MSA Report

Release 04/29/2011	data Jan 1990 / Mar 2011	Issue 14.04	www.real.illinois.edu
-----------------------	-----------------------------	----------------	-----------------------

Note: IDES revised their estimates for the number of jobs at the beginning of 2011.

As a companion to the Feb 2011 Illinois Job Index that reports a positive rating, this MSA Report provides a localized picture on Illinois job growth and allows for comparisons between local economies, Illinois, the Nation and the Rest of the Midwest.

April 2011	Total non-farm employment	Mar 2011 Number of Jobs	Feb 2011 – Mar 2011		Last 12 months	
			Growth Rate (%)	Number of Jobs	Growth Rate (%)	Number of Jobs
	Nation	130,738,000	0.17	216,000	1.00	1,300,000
	Rest of Midwest (RMW)	18,707,700	0.30	56,700	1.22	224,800
	Illinois	5,670,000	0.03	1,700	1.37	76,600
	Illinois Metro	5,169,300	0.20	10,100	1.27	64,600
	Illinois non-Metro (Rural)	500,700	-1.66	-8,400	2.45	12,000
	Illinois Chicago (Upstate)	4,021,400	0.16	6,500	1.25	49,600
	Illinois non-Chicago	1,648,600	-0.29	-4,800	1.66	27,000

The monthly Illinois Job Index and MSA Report are provided as tools for elected officials, policy leaders and the public. We can better understand the Illinois economy and business climate by comparing and measuring Illinois employment growth rates against those of the Rest of the Midwest (RMW: Indiana, Iowa, Michigan, Missouri, Ohio and Wisconsin) and the Nation. Data and analysis is provided by the Illinois Economic Observatory / Regional Economics Applications Laboratory, University of Illinois. The MSA data (unless noted) were seasonally adjusted to be consistent with state totals.

Talking Points

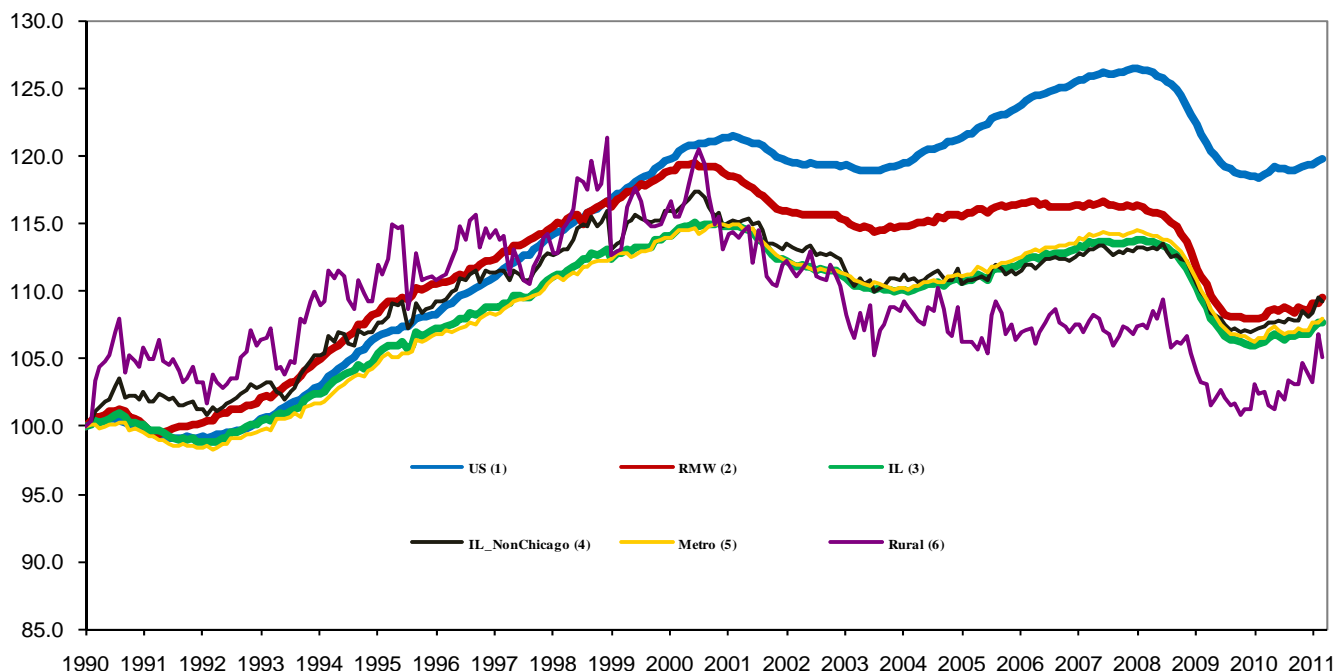
State, Downstate & Metro

- Illinois added 1,700 jobs in March 2011 at a rate of 0.03%, compared with a revised 20,300 job gain in February. Compared to March 2010, Illinois has added 76,600 jobs, the second largest monthly year-over-year increase since June 2006.
- Illinois has lost 315,200 jobs since the economic crisis developed in December, 2007.
- The major geographic divisions, Chicago-Downstate and Metro-Rural both had mixed performances in March.
- Illinois Rural area shed 8,400 jobs at -1.66% this month, compared to a revised 17,400 job gain in February. At the same time, Metro added 10,100 jobs at 0.20%, compared to a revised 2,900 job gain in the previous month.
- Chicago added 6,500 jobs at 0.16% in March 2011, compared to a revised 21,200 job gain last month. On the other hand, Downstate shed 4,800 jobs at -0.29%, compared to a revised 17,100 job gain in February.
- In terms of the 12-month aggregated account, Metro registered a positive 1.27% growth by adding 64,600 jobs whereas Rural added 12,000 jobs at 2.45%. Chicago added 49,600 jobs at 1.25% whereas Downstate added 27,000 jobs at 1.66%.
- Through March 2011, the cumulative job growth for Metro, Rural, Chicago and Downstate compared to January 1990 stood at 7.69%, 7.08 %, 6.87% and 9.09%, respectively.

MSA page (2-4)

- Illinois Metro added 10,100 jobs in March of 2011. Two out of the ten MSAs posted negative growth in March.
- In terms of growth performance, five MSAs posted a net improvement from February to March, five declined in terms of rank.
- Kankakee dropped to the last place in terms of monthly growth performance, while Peoria climbed up to the last place.
- Over the last 12-month period, Peoria stayed in the first place while Champaign-Urbana-Rantoul remained in the last place.

Total non-farm Employment growth Jan 1990 – Jan 2011



Talking Points

State, Downstate & Metro

- While the average growth for Illinois between 1990 and 2008 was 0.04%, the average from December 2007 to Mar 2011 is -0.13%, which is worse than the performance during the 2000-2001 downturns.
- Since the economic crisis in December, 2007, the average growth for Metro is -0.14 while for Rural it is -0.04%. The same rate for Downstate is -0.08% while for Upstate is -0.15%.
- Over the last 12-month period, the average growth rate for Metro was 0.11% and for Rural it was 0.21%.
- Illinois performed worse than the RMW and the nation in terms of yearly aggregated trend in 2009. In 2010, Illinois's performance is better than the RMW and compared favorably to the nation. So far in 2011, Illinois performed better than the nation and the RMW.
- Downstate registered a 0.33% average growth rate in 2011 compared to an average gain of 0.10% growth in 2007, -0.17% decline in 2008, -0.32% decline in 2009 and 0.09% growth in 2010.

By MSA

Market Area	Mar 2011 Number of Jobs	Feb 2011 –Mar 2011			Last 12 months	
		Growth compared to Illinois	Growth Rate %	Number Of Jobs	Growth Rate %	Number of Jobs
Bloomington-Normal (B-N)	91,200	+	0.63	600	1.02	1,000
Champaign-Urbana (C-U-R)	108,800	-	-0.40	-400	-0.84	-1,000
Chicago	4,021,400	+	0.16	6,500	1.25	49,600
Davenport-Rock Island-Moline (D-R-M)	180,200	+	0.30	500	1.33	2,400
Decatur	52,700	+	0.35	200	2.14	1,100
Kankakee	43,000	-	-0.62	-300	0.57	200
Peoria	181,000	+	0.94	1,700	3.87	6,700
Rockford	145,200	+	0.35	500	0.82	1,200
Springfield	112,200	+	0.16	200	0.96	1,100
Metro-East	233,700	+	0.28	600	0.98	2,300
Illinois			0.03	1,700	1.37	76,600

MSA League Tables*: Non-farm Employment Growth Rate

Monthly growth:

Rank	Feb 2011	Mar 2011	Rank	Change**
1	Metro-East(0.43%)	Peoria(0.94%)	1	↑(+7)
2	Rockford (0.4%)	Bloomington-Normal(0.63%)	2	↑(+5)
3	Kankakee (0.35%)	Decatur (0.35%)	3	↑(+1)
4	Decatur (0.24%)	Rockford (0.35%)	4	↓(-2)
5	Chicago (0.08%)	Davenport-Rock Island-Moline (0.3%)	5	↑(+4)
6	Springfield (0.08%)	Metro-East (0.28%)	6	↓(-5)
7	Bloomington-Normal (0.04%)	Chicago (0.16%)	7	↓(-2)
8	Peoria (0.01%)	Springfield (0.16%)	8	↓(-2)
9	Davenport-Rock Island-Moline(-0.13%)	Champaign-Urbana-Rantoul (-0.4%)	9	↑(+1)
10	Champaign-Urbana-Rantoul (-1.85%)	Kankakee (-0.62%)	10	↓(-7)

Growth over last 12-months:

Rank	Feb 2011	Mar 2011	Rank	Change**
1	Peoria (2.92%)	Peoria (3.87%)	1	←(+0)
2	Decatur (1.45%)	Decatur (2.14%)	2	←(+0)
3	Davenport-Rock Island-Moline (1.3%)	Davenport-Rock Island-Moline (1.33%)	3	←(+0)
4	Springfield (1.15%)	Chicago (1.25%)	4	↑(+2)
5	Metro-East (1.13%)	Bloomington-Normal (1.02%)	5	↑(+4)
6	Chicago (1.07%)	Metro-East (0.98%)	6	↓(-1)
7	Kankakee (1.01%)	Springfield (0.96%)	7	↓(-3)
8	Rockford (0.44%)	Rockford (0.82%)	8	←(+0)
9	Bloomington-Normal (0.36%)	Kankakee (0.57%)	9	↓(-2)
10	Champaign-Urbana-Rantoul (0.34%)	Champaign-Urbana-Rantoul (-0.84%)	10	←(+0)

Talking Points

MSA League Tables

- Kankakee experienced the deepest fall this month.
- Metro-East (1st to 6th), Chicago (5th to 7th), Springfield (6th to 8th) and Rockford (2nd to 4th) also dropped in terms of rank from last month.
- The most remarkable upward move in March was recorded for Peoria (8th to 1st).
- Bloomington-Normal (7th to 2nd), Decatur (4th to 3rd), Davenport-Rock Island-Moline (9th to 5th) and Champaign-Urbana-Rantoul (10th to 9th) also gained in terms of rank from last month.
- In the 12 months growth league table, upward moves were recorded for Chicago (6th to 4th) and Bloomington-Normal (9th to 5th) while downward moves were recorded for Springfield (4th to 3rd), Kankakee (7nd to 9th) and Metro-East (5th to 6th).
- Peoria remained in the first place while Champaign-Urbana-Rantoul stayed in the last place.

*MSA League Tables are based on revised employment data. For instances of equal growth rate for multiple MSAs ranks are decided based on change of growth rate from previous month.

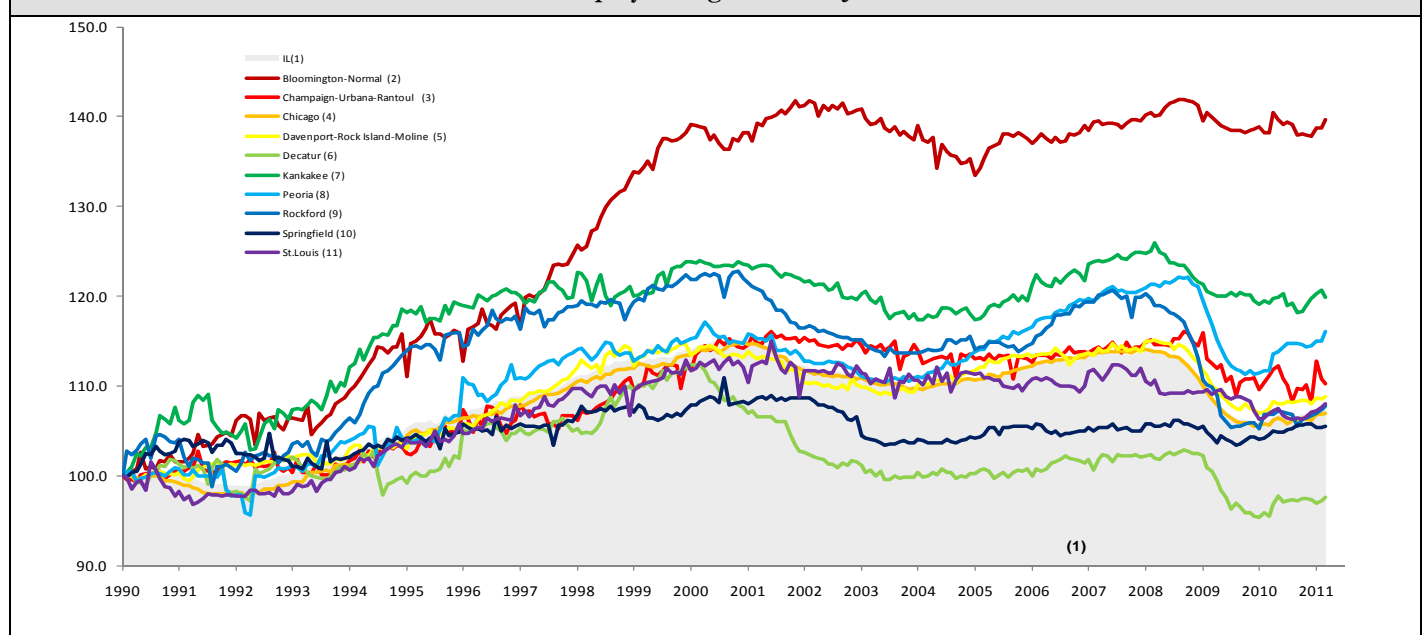
**Changes indicate change in rank position compared to previous month and correspond to the MSA at the right column. Rise is indicated by a '↑' and decline by a '↓' and for an unchanged position a '←' is used. Figures in parenthesis indicate relative rank change from previous month. Shaded area on above chart represents Illinois growth.

Mar 2011 MSA Employment by Sectors (000s) *

Market Area	Construction	Manufacturing	Trade, transportation & utilities	Information	Financial activities	Professional & business services	Education & health	Leisure & hospitality	Other Services	Government
Bloomington-Normal	2.59 (2.8%)	4.01 (4.4%)	13.77 (15.1%)	0.89 (1.0%)	12.04 (13.2%)	18.19 (19.9%)	11.34 (12.4%)	9.41 (10.3%)	3.38 (3.7%)	15.67 (17.2%)
Champaign-Urbana	3.46 (3.2%)	7.94 (7.3%)	17.94 (16.5%)	2.48 (2.3%)	4.44 (4.1%)	7.67 (7.0%)	13.12 (12.1%)	10.23 (9.4%)	3.29 (3.0%)	38.15 (35.1%)
Chicago	137.61 (3.4%)	374.18 (9.3%)	810.97 (20.2%)	75.6 (1.9%)	276.46 (6.9%)	668.57 (16.6%)	595.29 (14.8%)	370.83 (9.2%)	182.11 (4.5%)	523.75 (13%)
Davenport-Rock Island-Moline	0.85 (2.9%)	4.84 (16.6%)	6.71 (23%)	0.30 (1.0%)	1.30 (4.5%)	2.10 (7.2%)	3.12 (10.7%)	2.27 (7.8%)	1.41 (4.8%)	6.17 (21.2%)
Decatur	8.58 (4.8%)	23.31 (12.9%)	36.56 (20.3%)	2.68 (1.5%)	8.28 (4.6%)	21.77 (12.1%)	25.56 (14.2%)	18.18 (10.1%)	7.47 (4.1%)	27.86 (15.5%)
Kankakee	3.47 (6.6%)	10.64 (20.2%)	11.06 (21%)	0.71 (1.3%)	2.04 (3.9%)	3.59 (6.8%)	8.08 (15.3%)	4.67 (8.9%)	2.55 (4.8%)	6.0 (11.4%)
Peoria	1.39 (3.2%)	4.64 (10.8%)	10.19 (23.7%)	0.52 (1.2%)	1.83 (4.2%)	2.92 (6.8%)	8.62 (20.1%)	3.94 (9.2%)	1.83 (4.3%)	7.07 (16.5%)
Rockford	8.34 (4.6%)	27.21 (15.0%)	34.27 (18.9%)	2.55 (1.4%)	7.86 (4.3%)	23.09 (12.8%)	31.91 (17.6%)	16.66 (9.2%)	7.95 (4.4%)	21.49 (11.9%)
Springfield	5.18 (3.6%)	26.86 (18.5%)	28.3 (19.5%)	1.68 (1.2%)	5.82 (4.0%)	15.09 (10.4%)	23.29 (16%)	12.55 (8.6%)	8.92 (6.1%)	17.57 (12.1%)
IL	198.49 (3.5%)	562.96 (9.9%)	1139.92 (20.1%)	98.37 (1.7%)	355.74 (6.3%)	816.17 (14.4%)	847.79 (15%)	523.38 (9.2%)	261.33 (4.6%)	851.83 (15.0%)

* The Illinois Department of Employment Security does not collect sector employment data for Metro-East

Total non-farm Employment growth rate Jan 1990 –Mar 2011



MSA DESCRIPTION: **Bloomington-Normal (B-N):** McLean Co. **Champaign-Urbana (C-U-R):** Champaign Co., Ford Co. & Piatt Co. **Chicago:** Cook Co. IL, DeKalb Co. IL, DuPage Co. IL, Grundy Co. IL, Kane Co. IL, Kendall Co. IL, Lake Co. IL, McHenry Co. IL, Will Co. IL & Kenosha Co. WI **Davenport-Moline-Rock Island (D-R-M):** Henry Co. IL, Mercer Co. IL, Rock Island Co. IL & Scott Co. IA **Decatur:** Macon Co. **Kankakee:** Kankakee Co. **Metro-East:** Bond Co., Calhoun Co., Clinton Co., Jersey Co., Macoupin Co., Madison Co., Monroe Co. & St. Clair Co. **Peoria-Pekin (Peoria):** Marshall Co., Peoria Co., Stark Co., Tazewell Co. & Woodford Co. **Rockford:** Boone Co. & Winnebago Co. **Springfield:** Menard Co. & Sangamon Co. The MSA data (unless noted) were seasonally adjusted to be consistent with state totals.

The Illinois Economic Observatory and Illinois Jobs Index is part of the Institute of Government and Public Affairs at the University of Illinois.