

# Illinois Job Index:

## MSA Report

Release 03/18/2011	data Jan 1990 / Jan 2011	Issue 14.02	www.real.illinois.edu
-----------------------	-----------------------------	----------------	-----------------------

Note: IDES revised their estimates for the number of jobs at the beginning of 2010.

As a companion to the Oct 2010 Illinois Job Index that reports a positive rating, this MSA Report provides a localized picture on Illinois job growth and allows for comparisons between local economies, Illinois, the Nation and the Rest of the Midwest.

Feb 2011	Total non-farm employment	Jan 2011 Number of Jobs	Dec 2010 – Jan 2011		Last 12 months	
			Growth Rate (%)	Number of Jobs	Growth Rate (%)	Number of Jobs
	<b>Nation</b>	130,323,000	0.05	63,000	0.81	1,042,000
	<b>Rest of Midwest (RMW)</b>	18,643,800	0.56	104,700	1.01	186,200
	<b>Illinois</b>	5,648,300	0.44	24,500	1.15	64,200
	<b>Illinois Metro</b>	5,154,000	0.48	24,700	1.22	62,200
	<b>Illinois non-Metro (Rural)</b>	494,300	-0.04	-200	0.40	2,000
	<b>Illinois Chicago (Upstate)</b>	4,010,500	0.47	18,700	1.10	43,800
	<b>Illinois non-Chicago</b>	1,637,800	0.36	5,800	1.26	20,400

The monthly Illinois Job Index and MSA Report are provided as tools for elected officials, policy leaders and the public. We can better understand the Illinois economy and business climate by comparing and measuring Illinois employment growth rates against those of the Rest of the Midwest (RMW: Indiana, Iowa, Michigan, Missouri, Ohio and Wisconsin) and the Nation. Data and analysis is provided by the Illinois Economic Observatory / Regional Economics Applications Laboratory, University of Illinois. The MSA data (unless noted) were seasonally adjusted to be consistent with state totals.

### Talking Points

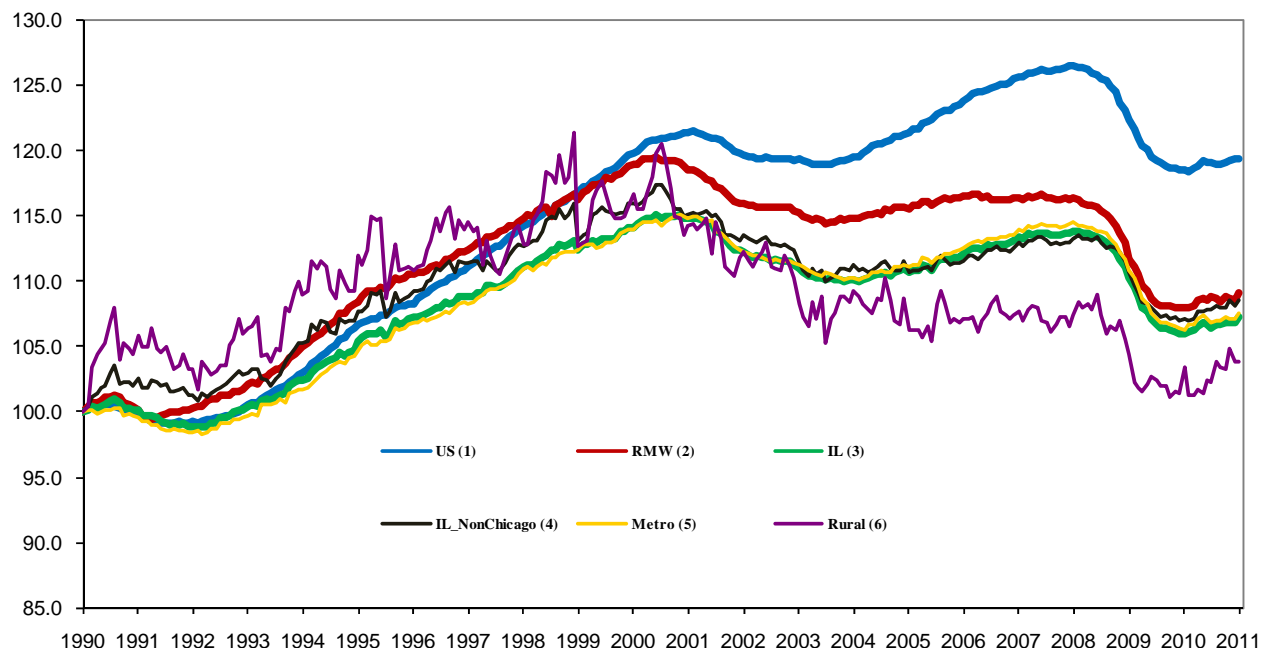
#### State, Downstate & Metro

- Illinois added 24,500 jobs in Jan 2010 at a rate of 0.44%, compared with a revised 5,200 job loss in December. Compared to January 2010, Illinois added 64,200 jobs, the largest monthly year-over-year increase since May 2007.
- Illinois has lost 337,000 jobs since the economic crisis developed in December, 2007.
- The major geographic divisions, Chicago-Downstate has positive performance while Metro-Rural had mixed performances in January.
- Illinois Rural area shed 200 jobs at -0.04% this month, compared to a revised 4,800 job loss in December. At the same time, Metro added 24,700 jobs, compared to a revised 400 job loss in the previous month.
- Chicago added 18,700 jobs at 0.47% January 2011, compared to a revised 300 job gain last month. On the other hand, Downstate added 5,800 jobs at 0.36%, compared to a revised 5,500 job loss in December.
- In terms of the 12-month aggregated account, Metro registered a positive 1.22% growth by adding 62,200 jobs whereas Rural added 2,000 jobs at 0.40%. Chicago added 43,800 jobs at 1.10% whereas Downstate added 20,400 jobs at 1.26%.
- Through Jan 2011, the cumulative job growth for Metro, Rural, Chicago and Downstate compared to January 1990 stood at 7.59%, 3.78%, 6.73% and 8.53%, respectively.

#### MSA page (2-4)

- Illinois Metro added 24,700 jobs in the first month of 2011. Two out of the ten MSAs posted negative growth in January.
- In terms of growth performance, five MSAs posted a net improvement from December to January, five declined in terms of rank.
- Champaign-Urbana-Rantoul ranked first in terms of monthly growth performance, while Springfield remained in the last place.
- Over the last 12-month period, Peoria stayed in the first place by adding 1,000 jobs while Bloomington-Normal dropped to the last place.

### Total non-farm Employment growth Jan 1990 – Jan 2011



### Talking Points

#### State, Downstate & Metro

- While the average growth for Illinois between 1990 and 2008 was 0.04%, the average from December 2007 to Jan 2011 is -0.15%, which is worse than the performance during the 2000-2001 downturns.
- Since the economic crisis in December, 2007, the average growth for Metro is -0.16% while for Rural is -0.08%. The same rate for Downstate is -0.11% while for Upstate is -0.17%.
- Over the last 12-month period, the average growth rate for Metro was 0.10% and for Rural it was 0.04%.
- Illinois performed worse than the RMW and the nation in terms of yearly aggregated trend in 2009. In 2010, Illinois's performance is better than the RMW and compare favorably to the nation.
- Downstate registered a 0.09% average growth rate in 2010 compared to an average gain of 0.10% growth in 2007, -0.17% decline in 2008, and -0.32% decline in 2009.

### By MSA

Market Area	Jan 2011 Number of Jobs	Dec 2010 –Jan 2011			Last 12 months	
		Growth compare d to Illinois	Growth Rate %	Number Of Jobs	Growth Rate %	Number of Jobs
Bloomington-Normal (B-N)	90,300	+	0.48	400	-0.33	-300
Champaign-Urbana (C-U-R)	111,00	+	4.28	4,600	3.01	3,300
Chicago	4,010,500	+	0.47	18,700	1.10	43,800
Davenport-Rock Island-Moline (D-R-M)	179,900	+	0.53	900	1.72	3,000
Decatur	52,300	-	-0.43	-200	1.64	800
Kankakee	43,000	-	0.29	100	1.01	400
Peoria	179,300	+	0.54	1,000	3.20	5,600
Rockford	143,900	-	0.14	200	1.56	2,200
Springfield	111,600	-	-0.85	-1,000	1.26	1,400
Metro-East	231,900	-	0.00	0	0.88	2,000
<b>Illinois</b>			<b>0.44</b>	<b>24,500</b>	<b>1.15</b>	<b>64,200</b>

# MSA League Tables\*: Non-farm Employment Growth Rate

## Monthly growth:

Rank	Dec 2010	Jan 2011	Rank	Change**
1	Kankakee(0.61%)	Champaign-Urbana-Rantoul(4.28%)	1	↑(+9)
2	Metro-East (0.55%)	Peoria(0.54%)	2	↑(+3)
3	Rockford (0.22%)	Davenport-Rock Island-Moline (0.53%)	3	↑(+6)
4	Springfield (0.07%)	Bloomington-Normal (0.48%)	4	↑(+3)
5	Peoria (0.03%)	Chicago (0.47%)	5	↑(+1)
6	Chicago (0.01%)	Kankakee (0.29%)	6	↓(-5)
7	Bloomington-Normal (-0.16%)	Rockford (0.14%)	7	↓(-4)
8	Decatur (-0.18%)	Metro-East (0%)	8	↓(-6)
9	Davenport-Rock Island-Moline(-0.33%)	Decatur (-0.43%)	9	↓(-1)
10	Champaign-Urbana-Rantoul (-1.77%)	Springfield (-0.85%)	10	↓(-6)

## Growth over last 12-months:

Rank	Dec 2010	Jan 2011	Rank	Change**
1	Peoria (2.76%)	Peoria (3.2%)	1	←(+0)
2	Decatur (1.93%)	Champaign-Urbana-Rantoul (3.01%)	2	↑(+8)
3	Springfield (1.45%)	Davenport-Rock Island-Moline (1.72%)	3	↑(+1)
4	Davenport-Rock Island-Moline (0.72%)	Decatur (1.64%)	4	↓(-2)
5	Rockford (0.65%)	Rockford (1.56%)	5	←(+0)
6	Chicago (0.64%)	Springfield (1.26%)	6	↓(-3)
7	Kankakee (0.28%)	Chicago (1.1%)	7	↓(-1)
8	Metro-East (-0.07%)	Kankakee (1.01%)	8	↓(-1)
9	Bloomington-Normal (-0.59%)	Metro-East (0.88%)	9	↓(-1)
10	Champaign-Urbana-Rantoul (-2.48%)	Bloomington-Normal (-0.33%)	10	↓(-1)

## Talking Points

### MSA League Tables

- Metro-East and Springfield experienced the deepest fall this month.
- Rockford (3th to 7th), Kankakee (1st to 6th) and Decatur (8th to 9th) also dropped in terms of rank from last month.
- The most remarkable upward move in January was Champaign-Urbana-Rantoul (10th to 1st).
- Davenport-Rock Island-Moline (9th to 3rd), Bloomington-Normal (9th to 3rd) and Peoria (5th to 2nd) also gained in terms of rank.
- In the 12 months growth league table, upward moves were recorded for Champaign-Urbana-Rantoul (10th to 2nd) and Davenport-Rock Island-Moline (4th to 3rd) while downward moves were recorded for Bloomington-Normal(9th to 10th), Springfield (3rd to6th) and Decatur (2nd to4th).
- Peoria and Rockford remained unchanged in terms of rank.

\*MSA League Tables are based on revised employment data. For instances of equal growth rate for multiple MSAs ranks are decided based on change of growth rate from previous month.

\*\*Changes indicate change in rank position compared to previous month and correspond to the MSA at the right column. Rise is indicated by a '↑' and decline by a '↓' and for an unchanged position a '←' is used. Figures in parenthesis indicate relative rank change from previous month.

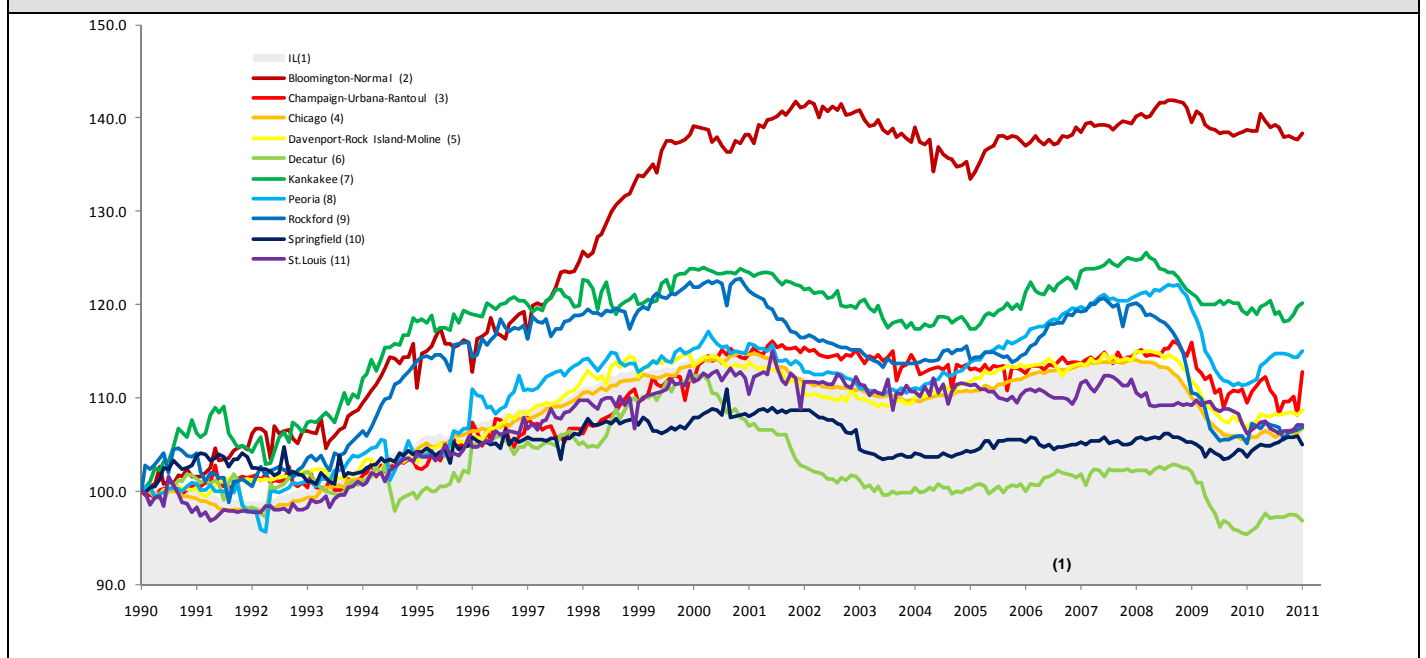
Shaded area on above chart represents Illinois growth.

Jan 2011 MSA Employment by Sectors (000s) \*

Market Area	Construction	Manufacturing	Trade, transportation & utilities	Information	Financial activities	Professional & business services	Education & health	Leisure & hospitality	Other Services	Government
Bloomington-Normal	2.55 (2.8%)	4.01 (4.4%)	13.43 (14.9%)	0.90 (1.0%)	12.02 (13.3%)	17.81 (19.7%)	11.43 (12.7%)	9.42 (10.4%)	3.37 (3.7%)	15.50 (17.2%)
Champaign-Urbana	3.44 (3.1%)	7.82 (7.0%)	17.72 (15.9%)	2.87 (2.6%)	4.54 (4.1%)	7.69 (6.9%)	13.13 (11.8%)	10.41 (9.4%)	3.24 (2.9%)	40.66 (36.5%)
Chicago	133.08 (3.3%)	374.07 (9.3%)	806.1 (20.1%)	77.34 (1.9%)	277.88 (6.9%)	665.32 (16.6%)	596.81 (14.9%)	369.03 (9.2%)	181.16 (4.5%)	524.75 (13.1%)
Davenport-Rock Island-Moline	0.80 (2.8%)	4.81 (16.7%)	6.54 (22.7%)	0.29 (1.0%)	1.31 (4.5%)	2.05 (7.1%)	3.13 (10.8%)	2.30 (8.0%)	1.31 (4.5%)	6.29 (21.8%)
Decatur	8.28 (4.6%)	22.92 (12.7%)	37.21 (20.7%)	2.70 (1.5%)	8.36 (4.6%)	21.52 (12.0%)	25.54 (14.2%)	17.9 (10.0%)	7.43 (4.1%)	28.11 (15.6%)
Kankakee	3.45 (6.6%)	10.49 (20.1%)	10.8 (20.7%)	0.70 (1.3%)	2.03 (3.9%)	3.61 (6.9%)	8.03 (15.4%)	4.67 (8.9%)	2.56 (4.9%)	5.92 (11.3%)
Peoria	1.38 (3.2%)	4.66 (10.8%)	10.2 (23.7%)	0.52 (1.2%)	1.80 (4.2%)	2.91 (6.8%)	8.72 (20.3%)	3.94 (9.1%)	1.84 (4.3%)	7.15 (16.6%)
Rockford	8.11 (4.5%)	26.43 (14.7%)	33.63 (18.8%)	2.57 (1.4%)	7.91 (4.4%)	22.39 (12.5%)	31.87 (17.8%)	16.82 (9.4%)	7.84 (4.4%)	21.63 (12.1%)
Springfield	5.03 (3.5%)	27.03 (18.8%)	27.96 (19.4%)	1.74 (1.2%)	5.87 (4.1%)	15.03 (10.4%)	23.32 (16.2%)	12.34 (8.6%)	8.92 (6.2%)	17.14 (11.9%)
IL	195.59 (3.5%)	562.91 (10.0%)	1130.98 (20.0%)	100.54 (1.8%)	359.68 (6.4%)	808.91 (14.3%)	844.85 (15%)	521.79 (9.2%)	257.26 (4.6%)	851.35 (15.1%)

\* The Illinois Department of Employment Security does not collect sector employment data for Metro-East

Total non-farm Employment growth rate Jan 1990 –Jan 2011



MSA DESCRIPTION: **Bloomington-Normal (B-N):** McLean Co. **Champaign-Urbana (C-U-R):** Champaign Co., Ford Co. & Piatt Co. **Chicago:** Cook Co. IL, DeKalb Co. IL, DuPage Co. IL, Grundy Co. IL, Kane Co. IL, Kendall Co. IL, Lake Co. IL, McHenry Co. IL, Will Co. IL & Kenosha Co. WI **Davenport-Moline-Rock Island (D-R-M):** Henry Co. IL, Mercer Co. IL, Rock Island Co. IL & Scott Co. IA **Decatur:** Macon Co. **Kankakee:** Kankakee Co. **Metro-East:** Bond Co., Calhoun Co., Clinton Co., Jersey Co., Macoupin Co., Madison Co., Monroe Co. & St. Clair Co. **Peoria-Pekin (Peoria):** Marshall Co., Peoria Co., Stark Co., Tazewell Co. & Woodford Co. **Rockford:** Boone Co. & Winnebago Co. **Springfield:** Menard Co. & Sangamon Co. The MSA data (unless noted) were seasonally adjusted to be consistent with state totals.

The Illinois Economic Observatory and Illinois Jobs Index is part of the Institute of Government and Public Affairs at the University of Illinois.