

Illinois Job Index:

MSA Report

Release 04/05/2011	data Jan 1990 / Feb 2011	Issue 14.03	www.real.illinois.edu
-----------------------	-----------------------------	----------------	-----------------------

Note: IDES revised their estimates for the number of jobs at the beginning of 2011.

As a companion to the Feb 2011 Illinois Job Index that reports a positive rating, this MSA Report provides a localized picture on Illinois job growth and allows for comparisons between local economies, Illinois, the Nation and the Rest of the Midwest.

Mar 2011	Total non-farm employment	Feb 2011 Number of Jobs	Jan 2011 – Feb 2011		Last 12 months	
			Growth Rate (%)	Number of Jobs	Growth Rate (%)	Number of Jobs
	Nation	130,515,000	0.15	192,000	0.98	1,269,000
	Rest of Midwest (RMW)	18,652,200	0.01	1,100	1.07	196,800
	Illinois	5,665,600	0.31	17,600	1.35	75,200
	Illinois Metro	5,156,189	-0.01	-300	1.06	54,200
	Illinois non-Metro (Rural)	509,411	3.65	17,900	4.30	21,000
	Illinois Chicago (Upstate)	4,013,998	0.04	1,800	1.06	42,100
	Illinois non-Chicago	1,651,602	0.97	15,800	2.04	33,100

The monthly Illinois Job Index and MSA Report are provided as tools for elected officials, policy leaders and the public. We can better understand the Illinois economy and business climate by comparing and measuring Illinois employment growth rates against those of the Rest of the Midwest (RMW: Indiana, Iowa, Michigan, Missouri, Ohio and Wisconsin) and the Nation. Data and analysis is provided by the Illinois Economic Observatory / Regional Economics Applications Laboratory, University of Illinois. The MSA data (unless noted) were seasonally adjusted to be consistent with state totals.

Talking Points

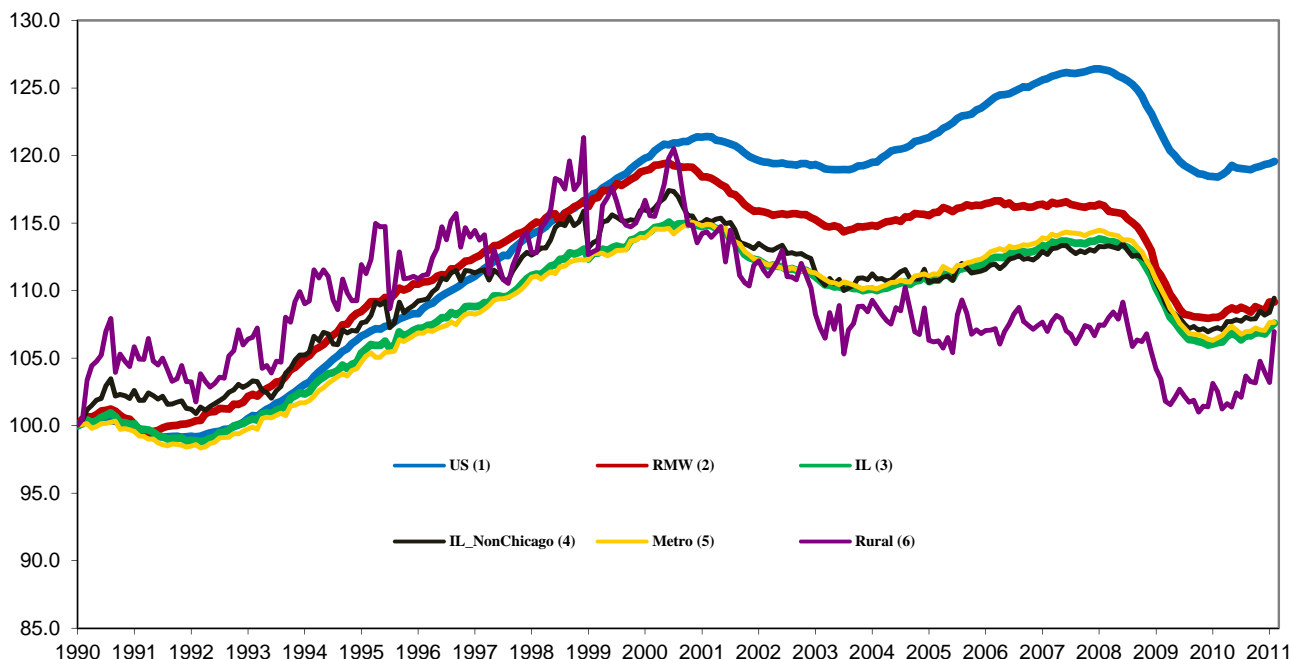
State, Downstate & Metro

- Illinois added 192,000 jobs in Feb 2011 at a rate of 0.15%, compared with a revised 24,200 job gain in January. Compared to February 2010, Illinois has added 75,200 jobs, the largest monthly year-over-year increase since June 2006. Illinois has lost 319,600 jobs since the economic crisis developed in December, 2007.
- The major geographic divisions, Chicago-Downstate had positive while Metro-Rural had mixed performances in February.
- Illinois Rural area added 17,900 jobs at 3.65% this month, compared to a revised 3,800 job loss in January. At the same time, Metro shed 300 jobs, compared to a revised 28,000 job gain in the previous month.
- Chicago added 1,800 jobs at 0.04% February 2011, compared to a revised 21,200 job gain last month. On the other hand, Downstate added 15,800 jobs at 0.97%, compared to a revised 3,000 job gain in January.
- In terms of the 12-month aggregated account, Metro registered a positive 1.06% growth by adding 54,200 jobs whereas Rural added 21,000 jobs at 4.30%. Chicago added 42,100 jobs at 1.06% whereas Downstate added 33,100 jobs at 2.04%.
- Through Feb 2011, the cumulative job growth for Metro, Rural, Chicago and Downstate compared to January 1990 stood at 7.63%, 6.95 %, 6.82% and 9.44%, respectively.

MSA page (2-4)

- Illinois Metro shed 300 jobs in February of 2011. Four out of the ten MSAs posted negative growth in February.
- In terms of growth performance, five MSAs posted a net improvement from January to February, five declined in terms of rank.
- Champaign-Urbana-Rantoul dropped to the last place in terms of monthly growth performance, while Rockford climbed up to the last place.
- Over the last 12-month period, Peoria stayed in the first place while Champaign-Urbana-Rantoul dropped to the last place.

Total non-farm Employment growth Jan 1990 – Jan 2011



Talking Points

State, Downstate & Metro

- While the average growth for Illinois between 1990 and 2008 was 0.04%, the average from December 2007 to Jan 2011 is -0.14%, which is worse than the performance during the 2000-2001 downturns.
- Since the economic crisis in December, 2007, the average growth for Metro is -0.15 while for Rural it is 0%. The same rate for Downstate is -0.08% while for Upstate is -0.16%.
- Over the last 12-month period, the average growth rate for Metro was 0.09% and for Rural it was 0.36%.
- Illinois performed worse than the RMW and the nation in terms of yearly aggregated trend in 2009. In 2010, Illinois's performance is better than the RMW and compared favorably to the nation.
- Downstate registered a 0.58% average growth rate in 2011 compared to an average gain of 0.10% growth in 2007, -0.17% decline in 2008, -0.32% decline in 2009 and 0.09% growth in 2010.

By MSA

Market Area	Feb 2011 Number of Jobs	Jan 2011 –Feb 2011			Last 12 months	
		Growth compared to Illinois	Growth Rate %	Number Of Jobs	Growth Rate %	Number of Jobs
Bloomington-Normal (B-N)	90,500	-	-0.05	-50	0.36	300
Champaign-Urbana (C-U-R)	107,800	-	-3.13	-3,500	-1.19	-1,300
Chicago	4,014,000	-	0.04	1,800	1.06	42,100
Davenport-Rock Island-Moline (D-R-M)	179,700	-	-0.12	-200	1.31	2,300
Decatur	52,400	-	0.20	100	1.44	700
Kankakee	43,300	+	0.34	100	1.02	400
Peoria	179,100	-	-0.16	-300	2.91	5,100
Rockford	144,700	-	0.41	600	0.45	600
Springfield	112,000	-	0.25	300	1.16	1,300
Metro-East	232,800	+	0.35	800	1.12	2,600
Illinois			0.31	17,600	1.35	75,200

MSA League Tables*: Non-farm Employment Growth Rate

Monthly growth:

Rank	Jan 2011	Feb 2011	Rank	Change**
1	Champaign-Urbana-Rantoul(4.34%)	Rockford (0.41%)	1	↑(+6)
2	Bloomington-Normal (0.62%)	Metro-East(0.35%)	2	↑(+6)
3	Peoria (0.55%)	Kankakee (0.34%)	3	↑(+3)
4	Davenport-Rock Island-Moline (0.54%)	Springfield (0.25%)	4	↑(+6)
5	Chicago (0.53%)	Decatur (0.2%)	5	↑(+4)
6	Kankakee (0.45%)	Chicago (0.04%)	6	↓(-1)
7	Rockford (0.22%)	Bloomington-Normal (-0.05%)	7	↓(-5)
8	Metro-East (0.04%)	Davenport-Rock Island-Moline (-0.12%)	8	↓(-4)
9	Decatur(-0.42%)	Peoria (-0.16%)	9	↓(-6)
10	Springfield (-0.66%)	Champaign-Urbana-Rantoul (-3.13%)	10	↓(-9)

Growth over last 12-months:

Rank	Jan 2011	Feb 2011	Rank	Change**
1	Peoria (3.2%)	Peoria (2.91%)	1	←(+0)
2	Champaign-Urbana-Rantoul (3.01%)	Decatur (1.44%)	2	↑(+2)
3	Davenport-Rock Island-Moline (1.66%)	Davenport-Rock Island-Moline (1.31%)	3	←(+0)
4	Decatur (1.63%)	Springfield (1.16%)	4	↑(+2)
5	Rockford (1.56%)	Metro-East (1.12%)	5	↑(+4)
6	Springfield (1.27%)	Chicago (1.06%)	6	↑(+1)
7	Chicago (1.14%)	Kankakee (1.02%)	7	↑(+1)
8	Kankakee (1.02%)	Rockford (0.45%)	8	↓(-3)
9	Metro-East (0.87%)	Bloomington-Normal (0.36%)	9	↑(+1)
10	Bloomington-Normal (-0.11%)	Champaign-Urbana-Rantoul (-1.19%)	10	↓(-8)

Talking Points

MSA League Tables

- Champaign-Urbana-Rantoul experienced the deepest fall this month.
- Peoria (3rd to 9th), Davenport-Rock Island-Moline (1st to 6th) and Bloomington-Normal (2nd to 7th) also dropped in terms of rank from last month.
- The most remarkable upward moves in February were recorded for Rockford (7th to 1st), Metro-East (8th to 2nd) and Springfield (10th to 4th).
- Kankakee (6th to 3rd) and Decatur (9th to 5th) also gained in terms of rank.
- In the 12 months growth league table, upward moves were recorded for Decatur (4th to 2nd), Springfield (6th to 4th) and Metro-East (9th to 5th) while downward moves were recorded for Rockford (5th to 8th), and Champaign-Urbana-Rantoul (2nd to 8th).
- Peoria remained in the first place while Champaign-Urbana-Rantoul dropped to the last place.

*MSA League Tables are based on revised employment data. For instances of equal growth rate for multiple MSAs ranks are decided based on change of growth rate from previous month.

**Changes indicate change in rank position compared to previous month and correspond to the MSA at the right column. Rise is indicated by a '↑' and decline by a '↓' and for an unchanged position a '←' is used. Figures in parenthesis indicate relative rank change from previous month.

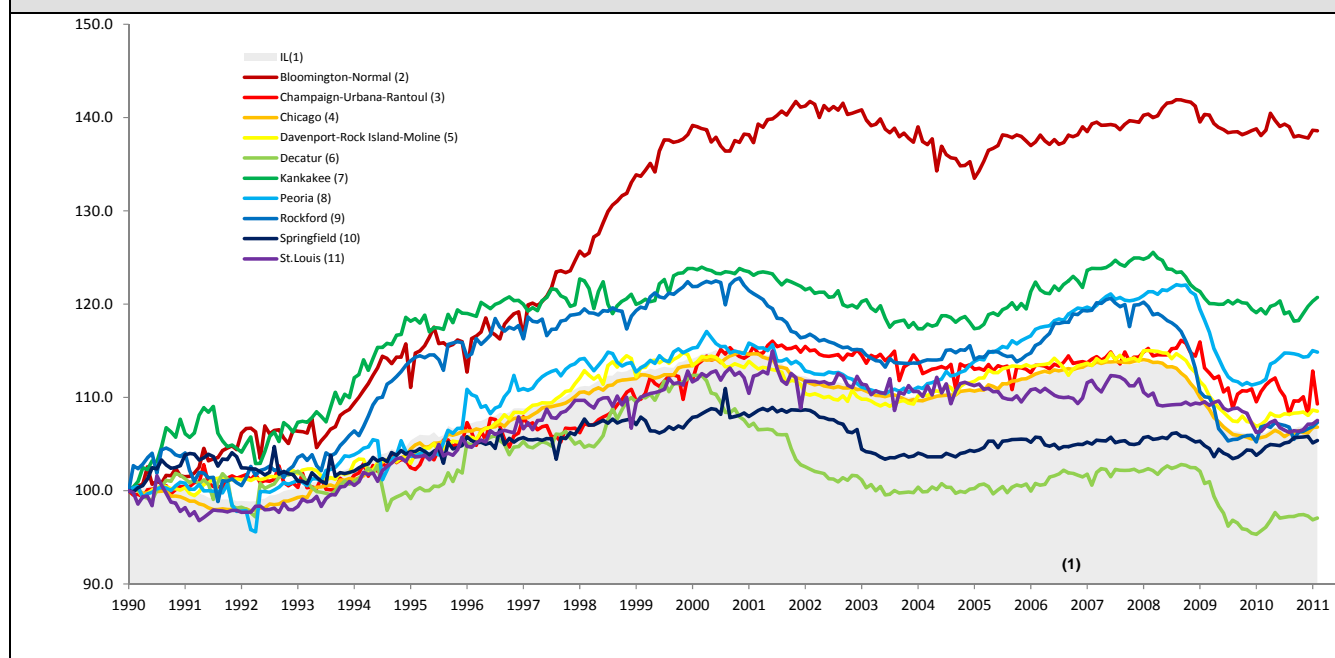
Shaded area on above chart represents Illinois growth.

Feb 2011 MSA Employment by Sectors (000s) *

Market Area	Construction	Manufacturing	Trade, transportation & utilities	Information	Financial activities	Professional & business services	Education & health	Leisure & hospitality	Other Services	Government
Bloomington-Normal	2.60 (2.9%)	3.99 (4.4%)	13.33 (14.7%)	0.89 (1.0%)	12.05 (13.3%)	18.05 (19.9%)	11.38 (12.6%)	9.33 (10.3%)	3.38 (3.7%)	15.63 (17.3%)
Champaign-Urbana	3.44 (3.2%)	7.92 (7.3%)	17.84 (16.5%)	2.78 (2.6%)	4.45 (4.1%)	7.69 (7.1%)	13.2 (12.2%)	10.31 (9.6%)	3.30 (3.1%)	36.61 (33.9%)
Chicago	133.72 (3.3%)	373.63 (9.3%)	806.87 (20.1%)	76.87 (1.9%)	277.83 (6.9%)	667.22 (16.6%)	596.65 (14.9%)	370.72 (9.2%)	181.3 (4.5%)	524.43 (13.1%)
Davenport-Rock Island-Moline	0.80 (2.8%)	4.88 (17%)	6.58 (22.8%)	0.29 (1.0%)	1.30 (4.5%)	2.02 (7.0%)	3.12 (10.8%)	2.27 (7.9%)	1.31 (4.6%)	6.25 (21.7%)
Decatur	8.44 (4.7%)	22.98 (12.8%)	37.06 (20.6%)	2.69 (1.5%)	8.29 (4.6%)	21.01 (11.7%)	25.53 (14.2%)	18.02 (10%)	7.46 (4.2%)	28.05 (15.6%)
Kankakee	3.47 (6.6%)	10.51 (20.1%)	10.8 (20.6%)	0.71 (1.3%)	2.05 (3.9%)	3.61 (6.9%)	8.03 (15.3%)	4.66 (8.9%)	2.55 (4.9%)	6.03 (11.5%)
Peoria	1.40 (3.2%)	4.64 (10.7%)	10.2 (23.6%)	0.52 (1.2%)	1.82 (4.2%)	2.97 (6.9%)	8.80 (20.3%)	3.94 (9.1%)	1.84 (4.2%)	7.13 (16.5%)
Rockford	8.14 (4.5%)	26.26 (14.7%)	33.68 (18.8%)	2.56 (1.4%)	7.88 (4.4%)	22.32 (12.5%)	31.98 (17.9%)	16.75 (9.4%)	7.91 (4.4%)	21.51 (12%)
Springfield	5.09 (3.5%)	26.77 (18.5%)	27.92 (19.3%)	1.72 (1.2%)	5.79 (4.0%)	14.98 (10.4%)	23.32 (16.1%)	12.48 (8.6%)	9.01 (6.2%)	17.57 (12.1%)
IL	196.86 (3.5%)	561.26 (9.9%)	1132.9 (20.0%)	99.04 (1.7%)	356.56 (6.3%)	811.9 (14.3%)	850.68 (15.0%)	523.66 (9.3%)	259.93 (4.6%)	851.81 (15.1%)

* The Illinois Department of Employment Security does not collect sector employment data for Metro-East

Total non-farm Employment growth rate Jan 1990 –Feb 2011



MSA DESCRIPTION: **Bloomington-Normal (B-N):** McLean Co. **Champaign-Urbana (C-U-R):** Champaign Co., Ford Co. & Piatt Co. **Chicago:** Cook Co. IL, DeKalb Co. IL, DuPage Co. IL, Grundy Co. IL, Kane Co. IL, Kendall Co. IL, Lake Co. IL, McHenry Co. IL, Will Co. IL & Kenosha Co. WI **Davenport-Moline-Rock Island (D-R-M):** Henry Co. IL, Mercer Co. IL, Rock Island Co. IL & Scott Co. IA **Decatur:** Macon Co. **Kankakee:** Kankakee Co. **Metro-East:** Bond Co., Calhoun Co., Clinton Co., Jersey Co., Macoupin Co., Madison Co., Monroe Co. & St. Clair Co. **Peoria-Pekin (Peoria):** Marshall Co., Peoria Co., Stark Co., Tazewell Co. & Woodford Co. **Rockford:** Boone Co. & Winnebago Co. **Springfield:** Menard Co. & Sangamon Co. The MSA data (unless noted) were seasonally adjusted to be consistent with state totals.

The Illinois Economic Observatory and Illinois Jobs Index is part of the Institute of Government and Public Affairs at the University of Illinois.