

Illinois Job Index:

MSA Report

Release 02/01/2011	data Jan 1990 / Dec 2011	Issue 15.01	www.real.illinois.edu
------------------------------	------------------------------------	-----------------------	------------------------------

Note: IDES revised their estimates for the number of jobs at the beginning of 2011.

As a companion to the June 2011 Illinois Job Index that reports an positive rating, this MSA Report provides a localized picture on Illinois job growth and allows for comparisons between local economies, Illinois, the Nation and the Rest of the Midwest.

January 2012	Total non-farm employment	Dec 2011 Number of Jobs	Nov 2011 – Dec 2011		Last 12 months	
			Growth Rate (%)	Number of Jobs	Growth Rate (%)	Number of Jobs
	Nation	131,900,000	0.15	200,000	1.26	1,640,000
	Rest of Midwest (RMW)	18,708,400	-0.01	-2,300	0.91	169,300
	Illinois	5,676,400	-0.07	-4,100	0.94	52,600
	Illinois Metro	5,161,200	-0.04	-1,900	0.59	30,500
	Illinois non-Metro (Rural)	515,200	-0.43	-2,200	4.49	22,100
	Illinois Chicago (Upstate)	4,014,700	-0.03	-1,100	0.55	21,900
	Illinois non-Chicago	1,661,700	-0.18	-3,000	1.88	30,700

The monthly Illinois Job Index and MSA Report are provided as tools for elected officials, policy leaders and the public. Understanding the Illinois economy and business climate is enhanced by comparing and measuring Illinois employment growth rates against those of the Rest of the Midwest (RMW: Indiana, Iowa, Michigan, Missouri, Ohio and Wisconsin) and the Nation. Data and analysis are provided by the Illinois Economic Observatory / Regional Economics Applications Laboratory, University of Illinois. The MSA data (unless noted) were seasonally adjusted to be consistent with state totals.

Talking Points

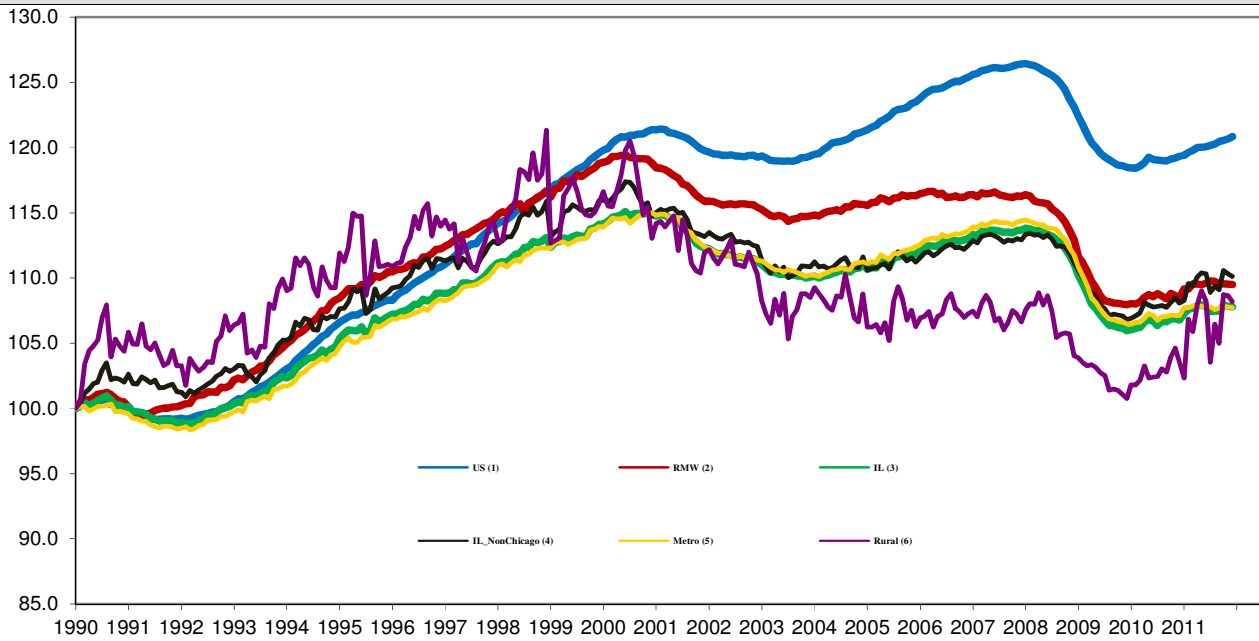
State, Downstate & Metro

- Illinois Shed 4,100 jobs in Dec 2011 at a rate of -0.07%, compared with a revised 5,000 job losses in Nov 2011. Compared to Dec 2010, Illinois has added 52,600 jobs. The three-month moving average of jobs, a more stable measure of labor market, was up by 5,900 jobs per month.
- Illinois has lost 308,800 jobs since the economic crisis developed in December 2007.
- Since January 2010 when Illinois employment resumed after the national recession, Illinois has added 95,900 new jobs.
- The major geographic divisions, Chicago-Downstate and Metro-Rural all had negative performance.
- Illinois Rural area shed 2,200 jobs at -0.43% this month, compared to a revised 400 job losses in Nov. At the same time, Metro shed 1,900 jobs at -0.04% this month, compared to a revised 4,600 job losses in the previous month.
- Chicago shed 1,100 jobs at -0.03% in Dec 2011, compared to a revised 1,100 job losses last month. On the other hand, Downstate shed 3,000 jobs at -0.18%, compared to a revised 3,900 job losses in Nov.
- In terms of the 12-month aggregated account, Metro registered a positive 0.59% growth by adding 30,500 jobs whereas Rural added 22,100 jobs at 4.49%. Chicago added 21,900 jobs at 0.55% whereas Downstate added 30,700 jobs at 1.88%.
- Through Dec 2011, the cumulative job growth for Metro, Rural, Chicago and Downstate compared to January 1990 stood at 7.74%, 8.18%, 6.84% and 10.11%, respectively.

MSA page (2-4)

- Illinois Metro shed 1,900 jobs at -0.04% in Dec of 2011. Seven out of the ten MSAs posted negative growth in Dec.
- In terms of growth performance, four MSAs posted a net improvement from Nov to Dec, four declined in terms of rank.
- Davenport-Rock Island-Moline dropped to the last place in terms of monthly growth performance, while Peoria climbed up to the first place.
- Over the last 12-month period, Peoria raised to the first place while Champaign-Urbana-Rantoul remained in the last place for the tenth consecutive months.

Total non-farm Employment growth Jan 1990 – Dec 2011



Talking Points

State, Downstate & Metro

- While the average growth for Illinois between 1990 and 2008 was 0.04%, the average from December 2007 to Dec 2011 is -0.11%. This is worse than the performance during the 2000-2001 downturns which saw declines of -0.07%.
- Since the economic crisis in December 2007, the average growth for Metro is -0.12% while for Rural it is 0.03%. The same rate for Upstate it is -0.13% while for Downstate is -0.05%.
- Over the last 12-month period, the average growth rate for Metro was 0.05% and for Rural it was 0.39%.
- Illinois performed worse than the RMW and the nation in terms of yearly aggregate trend in 2009. In 2010, Illinois's performance was better than the RMW and compared favorably to the nation. In 2011, Illinois has performed as good as the RMW but worse than the nation. From Jan to Dec 2011, the average growth rate for Illinois and the RMW is 0.08% while for the nation is 0.10%.
- Downstate registered a 0.16% average growth rate in 2011 compared to an average gain of 0.10% growth in 2007, -0.17% decline in 2008, -0.32% decline in 2009 and 0.09% growth in 2010.

By MSA

Market Area	Dec 2011 Number of Jobs	Nov 2011 – Dec 2011			Last 12 months	
		Growth compared to Illinois	Growth Rate %	Number Of Jobs	Growth Rate %	Number of Jobs
Bloomington-Normal (B-N)	90,100	-	-0.26	-200	0.07	100
Champaign-Urbana (C-U-R)	105,000	-	-0.14	-200	-1.46	-1,600
Chicago	4,014,700	+	-0.03	-1,100	0.55	21,900
Davenport-Rock Island-Moline (D-R-M)	178,600	-	-0.88	-1,600	-0.26	-500
Decatur	52,000	-	-0.54	-300	-1.08	-600
Kankakee	45,000	-	-0.40	-200	4.71	2,000
Peoria	187,400	+	0.91	1,700	4.85	8,700
Rockford	144,400	-	-0.29	-400	0.40	600
Springfield	112,800	+	0.25	300	0.53	600
Metro-East	231,200	+	0.02	100	-0.33	-800
Illinois			-0.07	-4,100	0.94	52,600

MSA League Tables*: Non-farm Employment Growth Rate

Monthly growth:

Rank	Nov 2011	Dec 2011	Rank	Change**
1	Springfield (0.27%)	Peoria (0.91%)	1	↑(+6)
2	Kankakee (0.09%)	Springfield (0.25%)	2	↓(-1)
3	Metro-East (0%)	Metro-East (0.02%)	3	↔(+0)
4	Champaign-Urbana-Rantoul (-0.02%)	Chicago (-0.03%)	4	↑(+1)
5	Chicago (-0.03%)	Champaign-Urbana-Rantoul (-0.14%)	5	↓(-1)
6	Bloomington-Normal (-0.07%)	Bloomington-Normal (-0.26%)	6	↔(+0)
7	Peoria (-0.26%)	Rockford (-0.29%)	7	↑(+2)
8	Davenport-Rock Island-Moline (-0.75%)	Kankakee (-0.4%)	8	↓(-6)
9	Rockford (-0.79%)	Decatur (-0.54%)	9	↑(+1)
10	Decatur (-1.45%)	Davenport-Rock Island-Moline (-0.88%)	10	↓(-2)

Growth over last 12-months:

Rank	Nov 2011	Dec 2011	Rank	Change**
1	Kankakee (6.05%)	Peoria (4.85%)	1	↑(+1)
2	Peoria (4.09%)	Kankakee (4.71%)	2	↓(-1)
3	Rockford (0.97%)	Chicago (0.55%)	3	↑(+1)
4	Chicago (0.58%)	Springfield (0.53%)	4	↑(+1)
5	Springfield (0.34%)	Rockford (0.4%)	5	↓(-2)
6	Davenport-Rock Island-Moline (0.3%)	Bloomington-Normal (0.07%)	6	↑(+1)
7	Bloomington-Normal (0.27%)	Davenport-Rock Island-Moline (-0.26%)	7	↓(-1)
8	Metro-East (0.16%)	Metro-East (-0.33%)	8	↔(+0)
9	Decatur (-0.55%)	Decatur (-1.08%)	9	↔(+0)
10	Champaign-Urbana-Rantoul (-3.21%)	Champaign-Urbana-Rantoul (-1.46%)	10	↔(+0)

Talking Points

MSA League Tables

- Kankakee (2nd to 8th) experienced the deepest fall this month.
- Davenport-Rock Island-Moline (8th to 10th), Springfield (1st to 2nd) and Champaign-Urbana-Rantoul (4th to 5th) also dropped in terms of rank from last month.
- The most remarkable upward move in December was recorded for Peoria (7th to 1st).
- Chicago (5th to 4th), Rockford (9th to 7th), Decatur (10th to 9th) also gained in terms of rank from last month.
- In the 12 months growth league table, upward moves were recorded for Peoria (2nd to 1st), Chicago (4th to 3rd), Springfield (5th to 4th) and Bloomington-Normal (7th to 6th) while downward moves were recorded for Davenport-Rock Island-Moline (6th to 7th), Rockford (3rd to 5th) and Kankakee (1st to 2nd).
- Metro-East, Decatur, and Champaign-Urbana-Rantoul remained in the same place.
- Champaign-Urbana-Rantoul stayed in the last place for the tenth consecutive month.

*MSA League Tables are based on revised employment data. For instances of equal growth rate for multiple MSAs ranks are decided based on change of growth rate from previous month.

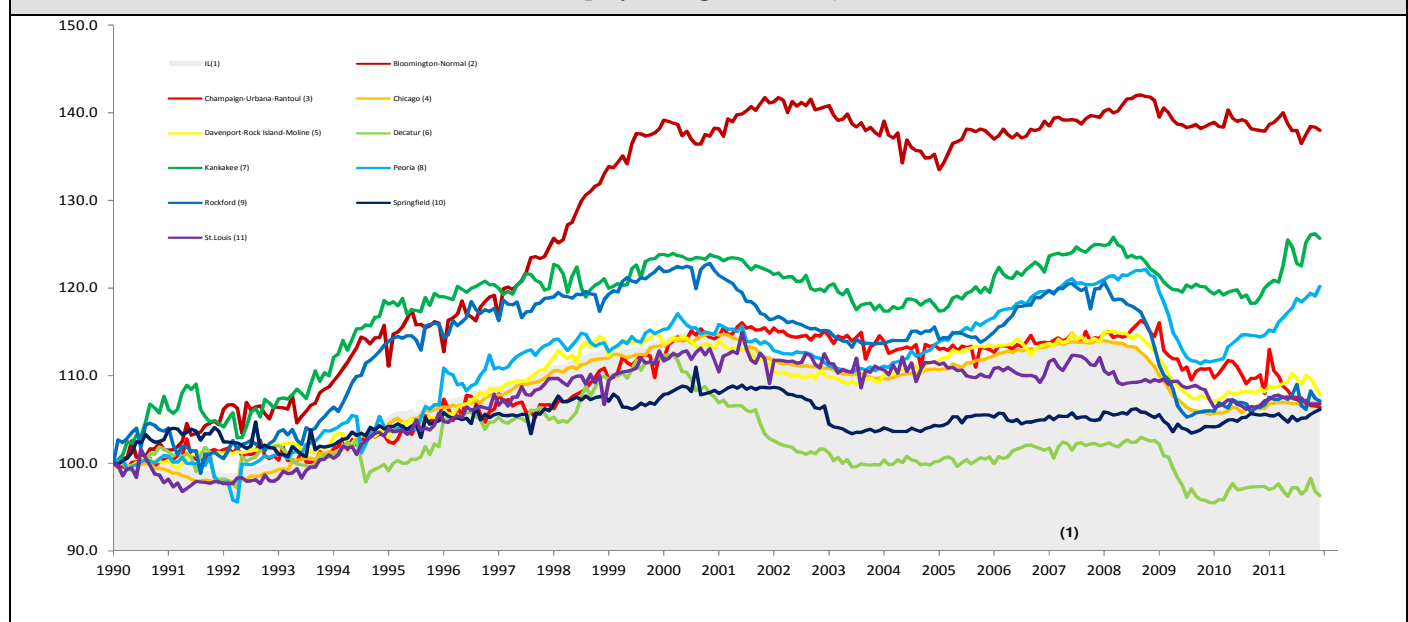
**Changes indicate change in rank position compared to previous month and correspond to the MSA at the right column. Rise is indicated by a '↑' and decline by a '↓' and for an unchanged position a '↔' is used. Figures in parenthesis indicate relative rank change from previous month. Shaded area on above chart represents Illinois growth.

Dec 2011 MSA Employment by Sectors (000s) *

Market Area	Construction (CON)	Manufacturing (MAN)	Trade, transportation & utilities (TTU)	Information (INF)	Financial activities (FIN)	Professional & business services (PRO)	Education & health (EDU)	Leisure & hospitality (LEI)	Other Services (OTH)	Government (GOV)
Bloomington-Normal	2.59 (2.9%)	4.01 (4.4%)	13.24 (14.6%)	0.81 (0.9%)	11.84 (13.1%)	18.00 (19.9%)	11.44 (12.7%)	9.84 (10.9%)	3.34 (3.7%)	15.36 (17.0%)
Champaign-Urbana	3.47 (3.3%)	7.86 (7.5%)	17.08 (16.2%)	2.78 (2.6%)	4.29 (4.1%)	7.50 (7.1%)	12.62 (12.0%)	9.83 (9.3%)	3.15 (3.0%)	36.67 (34.9%)
Chicago	138.12 (3.4%)	372.92 (9.3%)	813.9 (20.3%)	73.90 (1.8%)	275.42 (6.9%)	677.87 (16.9%)	599.67 (14.9%)	366.30 (9.1%)	178.53 (4.4%)	520.95 (13.0%)
Davenport-Rock Island-Moline	9.22 (5.1%)	24.47 (13.5%)	36.58 (20.1%)	2.70 (1.5%)	8.31 (4.6%)	21.71 (12%)	25.65 (14.1%)	18.29 (10.1%)	7.38 (4.1%)	27.38 (15.1%)
Decatur	3.58 (6.7%)	10.77 (20.3%)	10.89 (20.5%)	0.69 (1.3%)	1.98 (3.7%)	3.61 (6.8%)	7.93 (15.0%)	4.83 (9.1%)	2.42 (4.6%)	6.22 (11.7%)
Kankakee	1.28 (2.8%)	4.79 (10.6%)	10.78 (23.9%)	0.49 (1.1%)	2.00 (4.4%)	3.14 (7.0%)	9.19 (20.3%)	4.05 (9.0%)	1.91 (4.2%)	7.55 (16.7%)
Peoria	8.37 (4.5%)	29.64 (15.9%)	33.85 (18.2%)	2.48 (1.3%)	7.89 (4.2%)	24.23 (13%)	32.64 (17.5%)	16.94 (9.1%)	8.01 (4.3%)	21.89 (11.8%)
Rockford	5.16 (3.5%)	27.77 (19%)	28.18 (19.3%)	1.94 (1.3%)	5.81 (4.0%)	15.01 (10.3%)	23.22 (15.9%)	12.64 (8.7%)	9.02 (6.2%)	17.08 (11.7%)
Springfield	4.54 (4.0%)	3.17 (2.8%)	17.32 (15.4%)	1.93 (1.7%)	7.40 (6.6%)	11.94 (10.6%)	18.93 (16.9%)	10.12 (9.0%)	6.68 (6.0%)	30.19 (26.9%)
IL	202.28 (3.6%)	570.28 (10.0%)	1140.25 (20.1%)	97.55 (1.7%)	356.21 (6.3%)	831.81 (14.6%)	859.4 (15.1%)	521.96 (9.2%)	252.41 (4.4%)	843.62 (14.8%)

* The Illinois Department of Employment Security does not collect sector employment data for Metro-East

Total non-farm Employment growth rate Jan 1990 – Dec 2011



MSA DESCRIPTION: **Bloomington-Normal (B-N):** McLean Co. **Champaign-Urbana (C-U-R):** Champaign Co., Ford Co. & Piatt Co. **Chicago:** Cook Co. IL, DeKalb Co. IL, DuPage Co. IL, Grundy Co. IL, Kane Co. IL, Kendall Co. IL, Lake Co. IL, McHenry Co. IL, Will Co. IL & Kenosha Co. WI **Davenport-Moline-Rock Island (D-R-M):** Henry Co. IL, Mercer Co. IL, Rock Island Co. IL & Scott Co. IA **Decatur:** Macon Co. **Kankakee:** Kankakee Co. **Metro-East:** Bond Co., Calhoun Co., Clinton Co., Jersey Co., Macoupin Co., Madison Co., Monroe Co. & St. Clair Co. **Peoria-Pekin (Peoria):** Marshall Co., Peoria Co., Stark Co., Tazewell Co. & Woodford Co. **Rockford:** Boone Co. & Winnebago Co. **Springfield:** Menard Co. & Sangamon Co. The MSA data (unless noted) were seasonally adjusted to be consistent with state totals.

The Illinois Economic Observatory and Illinois Jobs Index is part of the Institute of Government and Public Affairs at the University of Illinois.

Employment Forecast for MSAs

MSAs	Dec 2011*	Dec 2012 (p)*	Number of Jobs *	Growth Rate %	Growth	Sector with Highest Growth Rate (p)	Sector with Lowest Growth Rate (p)
Bloomington-Normal	90,100	90,700	300~600	0.3%~0.7%	+	TTU (3%)	MAN (-7%)
Champaign-Urbana-Rantoul	105,000	104,400	-600~400	-0.6%~0.4%	-	FIN (2%)	CON (4%)
Chicago	4,014,700	4,055,000	2,000~40,300	0.05%~1.0%	+	EDU (3%)	CON (-5%)
Davenport-Rock Island-Moline	178,600	175,800	-2,800~1,500	-1.6%~0.8%	-	EDU (2%)	PRO (-9%)
Decatur	52,000	51,600	-400~400	-0.8%~0.8%	-	LEI (3%)	PRO (-12%)
Kankakee	45,000	45,000	0~200	0%~0.4%	-	EDU (2%)	CON (-4%)
Peoria	187,400	188,500	600~1,100	0.3%~0.6%	+	MAN (5%)	INF (-3%)
Rockford	144,400	143,700	-700~2,000	-0.5%~1.4%	-	EDU (2%)	CON (-10%)
Springfield	112,800	112,900	100~150	0.1%~0.15%	+	EDU (3%)	CON (-7%)

*Total Non-Farm Jobs

