

# Illinois Job Index:

## MSA Report

Release Apr 29/2015	data Jan 1990 / March 2015	Issue 15.4	www.real.illinois.edu
------------------------	-------------------------------	---------------	-----------------------

Note: IDES revised their estimates for the number of jobs at the beginning of 2015.

As a companion to the Sep 2014 Illinois Job Index that reports an positive rating, this MSA Report provides a localized picture on Illinois job growth and allows for comparisons between local economies, Illinois, the Nation and the Rest of the Midwest.

Apr 2015	Total non-farm employment	March 2015 Number of Jobs	Feb 2015 – Mar 2015		Last 12 months	
			Growth Rate (%)	Number of Jobs	Growth Rate (%)	Number of Jobs
	<b>Nation</b>	141,183,000	0.09	126,000	2.27	3,128,000
	<b>Rest of Midwest (RMW)</b>	19,860,700	-0.06	-12,500	1.70	332,700
	<b>Illinois</b>	5,915,300	-0.03	-1,800	1.23	71,600
	<b>Illinois Metro</b>	5,170,200	0.00	0	1.20	61,400
	<b>Illinois non-Metro (Rural)</b>	745,100	-0.24	-1,800	1.39	10,200
	<b>Illinois Chicago (Upstate)</b>	4,019,500	0.01	300	1.45	57,400
	<b>Illinois non-Chicago</b>	1,895,800	-0.11	-2,100	0.75	14,200

The monthly Illinois Job Index and MSA Report are provided as tools for elected officials, policy leaders and the public. Understanding the Illinois economy and business climate is enhanced by comparing and measuring Illinois employment growth rates against those of the Rest of the Midwest (RMW: Indiana, Iowa, Michigan, Missouri, Ohio and Wisconsin) and the Nation. Data and analysis are provided by the Illinois Economic Observatory / Regional Economics Applications Laboratory, University of Illinois. The MSA data (unless noted) were seasonally adjusted to be consistent with state totals.

### Talking Points

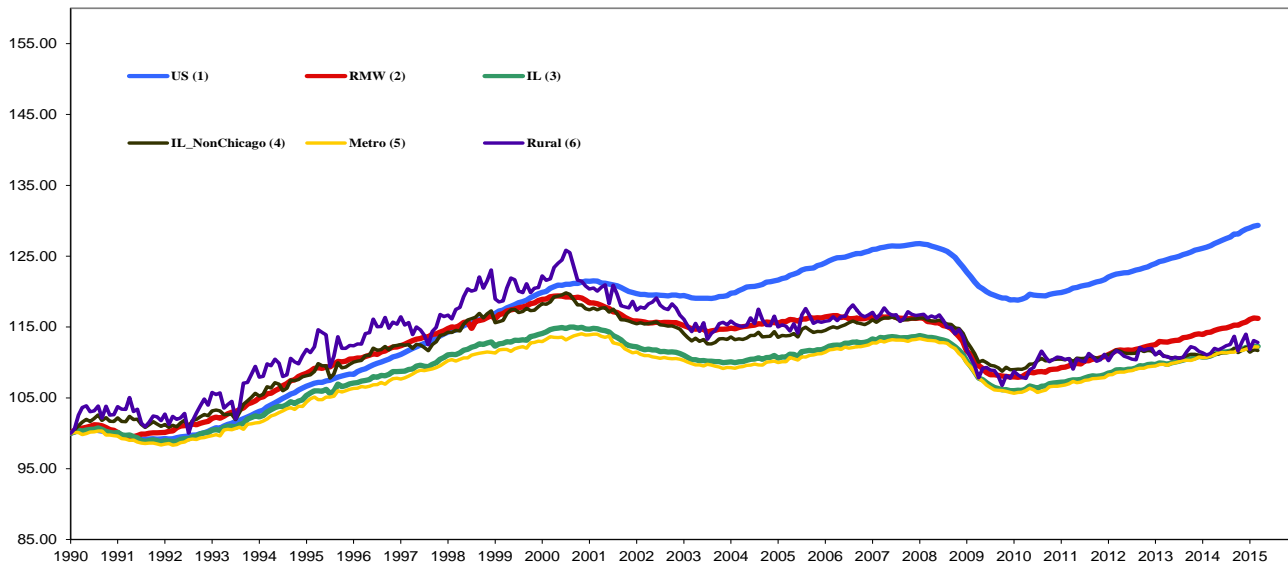
#### State, Downstate & Metro

- Illinois shed 1,800 jobs in March 2015, compared with a job gain of 14,900 in February 2015. Compared to March 2014, Illinois has added 71,600 jobs. The three-month moving average of jobs, a more stable measure of the labor market, was up by 2,800 jobs per month.
- Illinois has a net loss of 79,200 jobs since the economic crisis developed in December 2007.
- Since January 2010 when Illinois employment resumed after the national recession, Illinois has added 330,400 new jobs.
- The major geographic divisions, Chicago-Downstate and Metro-Rural had mixed performances.
- Illinois Rural area shed 1,800 jobs at -0.24% this month, compared to a revised 8,200 job gain in February 2015. At the same time, Metro's employment did not change, compared to a revised 6,700 job gain in the previous month.
- Chicago added 300 jobs at 0.01% in March 2015, compared to a revised 9,100 job gain last month. Meanwhile, Downstate shed 2,100 jobs at -0.11%, compared to a revised 5,800 job gain last month.
- In terms of the 12-month aggregated account, Metro registered a positive 1.20 % growth by adding 61,400 jobs whereas Rural added 10,200 jobs at 1.39%. Chicago added 57,400 jobs at 1.45% whereas Downstate added 14,200 jobs at 0.75%.
- Through March 2015, the cumulative job growth for Metro, Rural, Chicago and Downstate compared to January 1990 stood at 12.20%, 12.81%, 12.57% and 11.67% respectively.

#### MSA page (2-4)

- Illinois Metro shed 1,800 jobs at -0.24% in March 2015. Five out of ten MSAs posted positive growth.
- Since the job recovery resumed in Jan 2010 in Illinois, Chicago Upstate has shown an average growth rate of 11.67%, which is the highest among all the IL MSAs; Decatur has experienced the lowest average growth rate, -4.88%.
- In terms of growth performance, four MSAs posted net improvements from February to March, five declined in terms of rank.
- Decatur dropped to the last place in terms of monthly growth performance, while Kankakee remained at the first place.
- In terms of 12-month growth performance, Kankakee climbed to the first place while Decatur dropped to the last place.

### Total non-farm Employment growth Jan 1990 – March 2015



### Talking Points

#### State, Downstate & Metro

- While the average growth for Illinois between 1990 and 2008 was 0.04%, the average from December 2007 to March 2015 was -0.01%. This is better than the performance during the 2000-2001 downturns which saw declines of -0.09%.
- Since the economic crisis in December 2007, the average growth for Metro is -0.01% while for Rural it is -0.01%. The same rate for Chicago (Upstate) is 0.00% and for Downstate it is -0.04%.
- Over the last 12-month period, the average growth rate for Metro was 0.10% and for Rural it was 0.12%.
- Downstate registered a -0.13% average job loss in 2015 compared to an average gain of 0.04% in 2007, -0.11% decline in 2008, -0.35% decline in 2009, 0.13% growth in 2010, 0.01% growth in 2011, 0.11% growth in 2012, -0.03% decline in 2013 and 0.08% job growth in 2014.

#### Average Growth Rates for Illinois, RMW and the Nation

	2011(%)	2012(%)	2013(%)	2014(%)	2015(%)
Illinois	0.08	0.12	0.07	0.09	0.05
RMW	0.13	0.12	0.12	0.12	0.14
Nation	0.13	0.14	0.14	0.19	0.14

#### By MSA

Market Area	Mar 2015 Number of Jobs	February 2015 – March 2015			Last 12 months	
		Growth compared to Illinois	Growth Rate %	Number Of Jobs	Growth Rate %	Number of Jobs
Bloomington-Normal (B-N)	94,000	-	-0.13	-100	-0.58	-500
Champaign-Urbana (C-U-R)	108,200	-	-0.17	-200	1.82	2,000
Chicago	4,019,500	+	0.01	300	1.45	57,400
Davenport-Rock Island-Moline (D-R-M)	183,100	-	-0.09	-200	-0.17	-300
Decatur	50,100	-	-1.08	-500	-1.58	-800
Kankakee	45,400	+	0.67	300	2.24	1,000
Peoria	177,700	+	0.21	400	-0.34	-600
Rockford	151,800	+	0.17	300	2.14	3,200
Springfield	111,400	-	-0.36	-400	0.50	600
Metro-East	228,900	+	0.10	200	-0.17	-400
<b>Illinois</b>			<b>-0.03</b>	<b>-1,800</b>	<b>1.23</b>	<b>71,600</b>

# MSA League Tables\*: Non-farm Employment Growth Rate

## Monthly growth:

Rank	February 2015	March 2015	Rank	Change**
1	Kankakee(0.38%)	Kankakee(0.67%)	1	←(+0)
2	Champaign-Urbana-Rantoul(0.27%)	Peoria(0.21%)	2	↑(+7)
3	Chicago(0.2%)	Rockford (0.17%)	3	↑(+1)
4	Rockford (0.13%)	Metro-East(0.1%)	4	↑(+3)
5	Bloomington-Normal(0.12%)	Chicago(0.01%)	5	↓(-2)
6	Springfield (0.11%)	Davenport-Rock Island-Moline(-0.09%)	6	↑(+4)
7	Metro-East(-0.01%)	Bloomington-Normal(-0.13%)	7	↓(-2)
8	Decatur(-0.11%)	Champaign-Urbana-Rantoul(-0.17%)	8	↓(-6)
9	Peoria(-0.78%)	Springfield (-0.36%)	9	↓(-3)
10	Davenport-Rock Island-Moline(-0.83%)	Decatur(-1.08%)	10	↓(-2)

## Growth over last 12-months:

Rank	February 2015	March 2015	Rank	Change**
1	Champaign-Urbana-Rantoul (2.21%)	Kankakee (2.24%)	1	↑(+3)
2	Rockford (1.59%)	Rockford (2.14%)	2	←(+0)
3	Chicago (1.59%)	Champaign-Urbana-Rantoul (1.82%)	3	↓(-2)
4	Kankakee (1.33%)	Chicago (1.45%)	4	↓(-1)
5	Springfield (1.28%)	Springfield (0.5%)	5	←(+0)
6	Decatur (-0.21%)	Metro-East (-0.17%)	6	↑(+3)
7	Davenport-Rock Island-Moline (-0.24%)	Davenport-Rock Island-Moline (-0.17%)	7	←(+0)
8	Peoria (-0.51%)	Peoria (-0.34%)	8	←(+0)
9	Metro-East (-0.54%)	Bloomington-Normal (-0.58%)	9	↑(+1)
10	Bloomington-Normal (-0.55%)	Decatur (-1.58%)	10	↓(-4)

## Talking Points

### MSA League Tables

- Champaign-Urbana-Rantoul (2nd to 8th) experienced the deepest fall in March 2015.
- Chicago (3th to 5th), Bloomington-Normal (5th to 7th), Springfield (6th to 9th) and Decatur (8th to 10th) also dropped in terms of rank from last month.
- The most remarkable upward move in March was recorded for Peoria (9th to 7th).
- In the 12 months growth league table, upward moves were recorded for Kankakee (4th to 1st), Metro-East (9th to 6th) and Bloomington-Normal (10th to 9th).
- Downward moves were recorded for Champaign-Urbana-Rantoul (1st to 3rd), Chicago (3rd to 4th) and Decatur (6th to 10th).
- In the 12 months growth league table, Decatur dropped to the last place and Kankakee climbed to the first place.

\*MSA League Tables are based on revised employment data. For instances of equal growth rate for multiple MSAs ranks are decided based on change of growth rate from previous month.

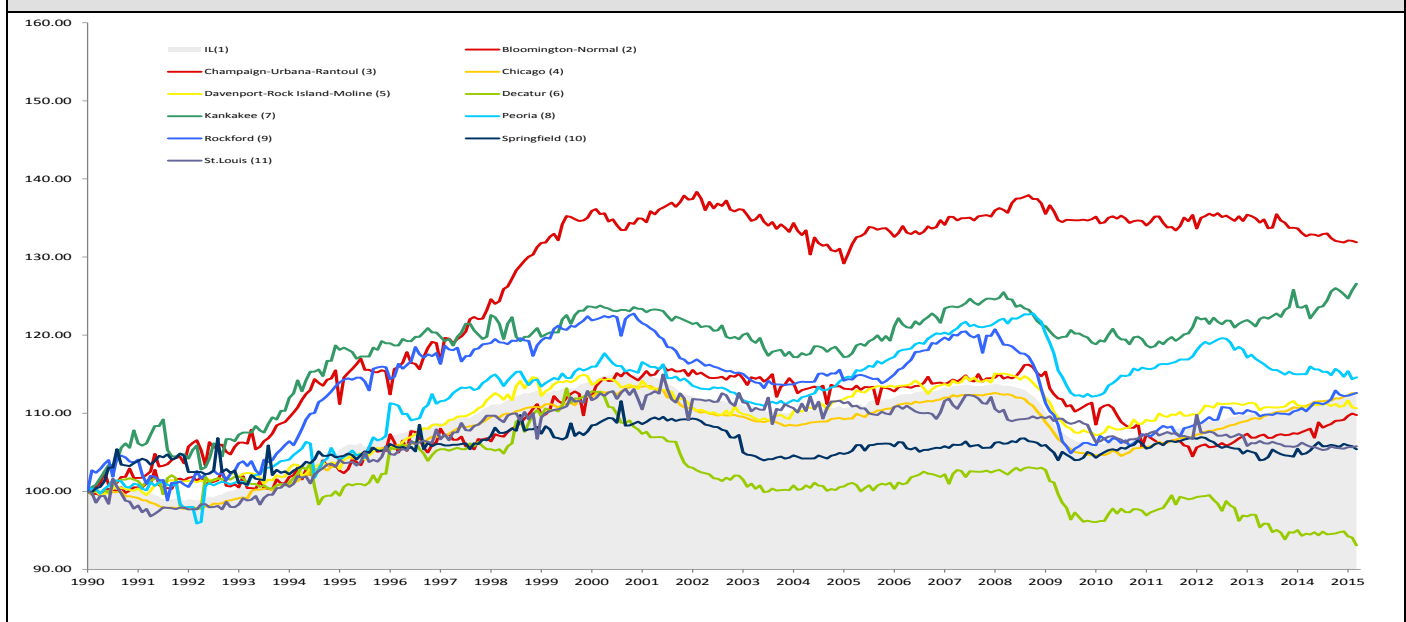
\*\*Changes indicate change in rank position compared to previous month and correspond to the MSA at the right column. Rise is indicated by a '↑' and decline by a '↓' and for an unchanged position a '←' is used. Figures in parenthesis indicate relative rank change from previous month.

March 2015 MSA Employment by Sectors (000s) \*

Market Area	Construction (CON)	Manufacturing (MAN)	Trade, transportation & utilities (TTU)	Information (INF)	Financial activities (FIN)	Professional & business services (PRO)	Education & health (EDU)	Leisure & hospitality (LEI)	Other Services (OTH)	Government (GOV)
Bloomington-Normal	2.47 (2.6%)	4.79 (5.1%)	15.25 (16.2%)	0.69 (0.7%)	12.18 (13%)	17.2 (18.3%)	10.69 (11.4%)	11.22 (11.9%)	3.73 (4%)	15.72 (16.7%)
Champaign-Urbana	3.17 (2.9%)	7.93 (7.3%)	16.88 (15.6%)	2.42 (2.2%)	4.49 (4.1%)	8.23 (7.6%)	14.26 (13.2%)	11.15 (10.3%)	3.41 (3.1%)	36.03 (33.3%)
Chicago	133.14 (3.3%)	336.68 (8.4%)	813.36 (20.2%)	75.43 (1.9%)	268.42 (6.7%)	747.36 (18.6%)	617.26 (15.4%)	382.76 (9.5%)	171.16 (4.3%)	474.47 (11.8%)
Davenport-Rock Island-Moline	9.26 (5.1%)	24.18 (13.2%)	39.86 (21.8%)	2.41 (1.3%)	7.87 (4.3%)	22.54 (12.3%)	26.01 (14.2%)	18.05 (9.9%)	7.25 (4%)	26.07 (14.2%)
Decatur	2.98 (6%)	10.17 (20.3%)	10.66 (21.3%)	0.6 (1.2%)	1.92 (3.8%)	2.98 (6%)	8.03 (16%)	4.99 (10%)	2.21 (4.4%)	5.47 (10.9%)
Kankakee	1.28 (2.8%)	5.82 (12.8%)	10.75 (23.7%)	0.41 (0.9%)	1.94 (4.3%)	3.99 (8.8%)	8.69 (19.1%)	3.99 (8.8%)	1.7 (3.7%)	6.96 (15.3%)
Peoria	7.98 (4.5%)	26.31 (14.8%)	32.59 (18.3%)	2.21 (1.2%)	7.57 (4.3%)	20.39 (11.5%)	34.13 (19.2%)	17.59 (9.9%)	7.86 (4.4%)	21.08 (11.9%)
Rockford	4.24 (2.8%)	32.71 (21.5%)	29.31 (19.3%)	1.4 (0.9%)	5.59 (3.7%)	16.18 (10.7%)	23.67 (15.6%)	13.34 (8.8%)	8.74 (5.8%)	16.53 (10.9%)
Springfield	4.8 (4.3%)	3.01 (2.7%)	17.38 (15.6%)	1.71 (1.5%)	7.11 (6.4%)	10.15 (9.1%)	20.43 (18.3%)	10.97 (9.8%)	6.39 (5.7%)	29.69 (26.7%)
IL	213.47 (3.6%)	577.51 (9.8%)	1183.59 (20%)	99.13 (1.7%)	367.03 (6.2%)	929.37 (15.7%)	896.63 (15.2%)	559.3 (9.5%)	251.65 (4.3%)	828.36 (14%)

\* The Illinois Department of Employment Security does not collect sector employment data for Metro-East

Total non-farm Employment growth rate Jan 1990 – March 2015



MSA DESCRIPTION: **Bloomington-Normal (B-N):** McLean Co. **Champaign-Urbana (C-U-R):** Champaign Co., Ford Co. & Piatt Co. **Chicago:** Cook Co. IL, DeKalb Co. IL, DuPage Co. IL, Grundy Co. IL, Kane Co. IL, Kendall Co. IL, Lake Co. IL, McHenry Co. IL, Will Co. IL & Kenosha Co. WI **Davenport-Moline-Rock Island (D-R-M):** Henry Co. IL, Mercer Co. IL, Rock Island Co. IL & Scott Co. IA **Decatur:** Macon Co. **Kankakee:** Kankakee Co. **Metro-East:** Bond Co., Calhoun Co., Clinton Co., Jersey Co., Macoupin Co., Madison Co., Monroe Co. & St. Clair Co. **Peoria-Pekin (Peoria):** Marshall Co., Peoria Co., Stark Co., Tazewell Co. & Woodford Co. **Rockford:** Boone Co. & Winnebago Co. **Springfield:** Menard Co. & Sangamon Co. The MSA data (unless noted) were seasonally adjusted to be consistent with state totals.

# Employment Forecast for MSAs

MSAs	March 2015*	March 2016 (p)*	Number of Jobs *	Growth Rate %	Growth	Sector with Highest Growth Rate (p)	Sector with Lowest Growth Rate (p)
Bloomington-Normal	94,000	95,100	1,100 ~ 1,200	1.18%~ 1.29%	+	GOV (3.41%)	INF (-10.25%)
Champaign-Urbana-Rantoul	108,200	108,500	300~400	0.28%~ 0.35%	+	INF (2.69%)	MAN (-2.44%)
Chicago	4,019,500	4,074,600	55,100~79,700	1.37%~1.98%	+	CON (4.21%)	GOV (-1.63%)
Davenport-Rock Island-Moline	183,100	182,700	-400~ 100	-0.24%~ 0.08%	-	EDU (1.66%)	PRO (-4.92%)
Decatur	50,100	49,300	-700~-400	-1.47%~-0.83%	-	CON (0.82%)	INF (-7.03%)
Kankakee	45,400	45,100	-300~100	-0.68%~ 0.20%	-	MAN (1.21%)	LEI (-3.60%)
Peoria	177,700	177,700	10~700	0.01 %~ 0.40%	+	PRO (4.09%)	FIN (-4.91%)
Rockford	151,800	152,400	600~620	0.39%~0.41%	+	MAN (2.88%)	CON (-9.00%)
Springfield	111,400	111,400	-30~-10	-0.03%~ -0.01%	-	PRO (2.36%)	INF (-4.26%)

\*Total Non-Farm Jobs

