

# Illinois Job Index:

## MSA Report

Release <b>Aug 29/2015</b>	data <b>Jan 1990 / July 2015</b>	Issue <b>15.8</b>	<b>www.real.illinois.edu</b>
-------------------------------	-------------------------------------	----------------------	------------------------------

Note: IDES revised their estimates for the number of jobs at the beginning of 2015.

As a companion to the Sep 2014 Illinois Job Index that reports an positive rating, this MSA Report provides a localized picture on Illinois job growth and allows for comparisons between local economies, Illinois, the Nation and the Rest of the Midwest.

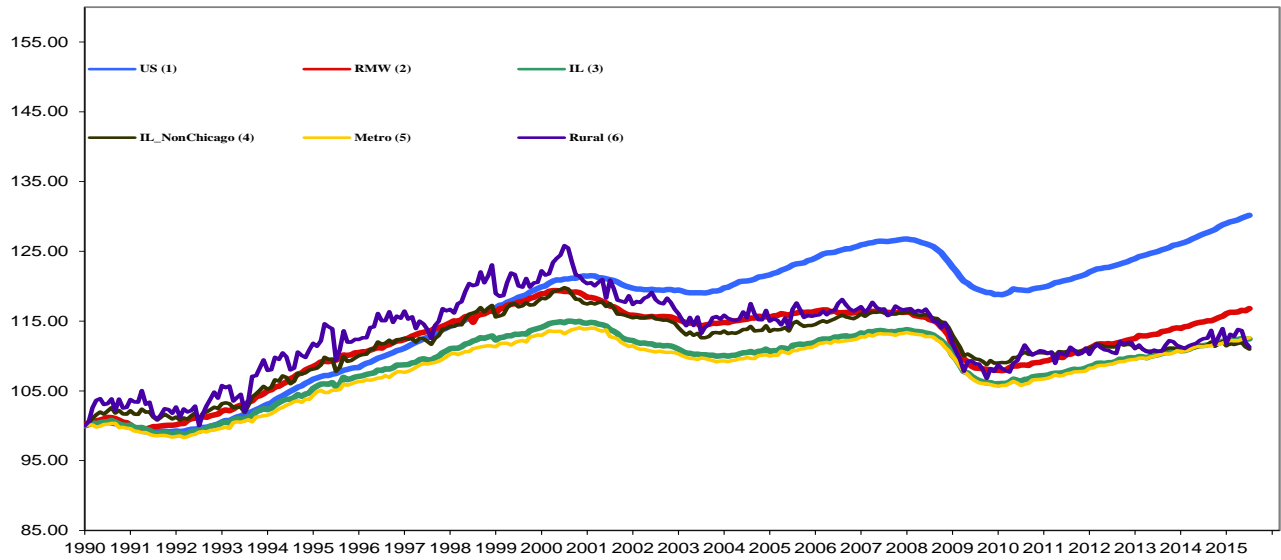
August 2015	Total non-farm employment	July 2015 Number of Jobs	June 2015 – July 2015		Last 12 months	
			Growth Rate (%)	Number of Jobs	Growth Rate (%)	Number of Jobs
	Nation	142,071,000	0.15	215,000	2.09	2,915,000
	Rest of Midwest (RMW)	19,964,700	0.29	56,800	1.68	330,300
	Illinois	5,924,000	0.03	1,900	0.85	50,100
	Illinois Metro	5,189,000	0.12	6,400	1.13	57,900
	Illinois non-Metro (Rural)	735,000	-0.61	-4,500	-1.05	-7,800
	Illinois Chicago (Upstate)	4,040,100	0.19	7,600	1.46	58,200
	Illinois non-Chicago	1,883,900	-0.30	-5,700	-0.43	-8,100

The monthly Illinois Job Index and MSA Report are provided as tools for elected officials, policy leaders and the public. Understanding the Illinois economy and business climate is enhanced by comparing and measuring Illinois employment growth rates against those of the Rest of the Midwest (RMW: Indiana, Iowa, Michigan, Missouri, Ohio and Wisconsin) and the Nation. Data and analysis are provided by the Illinois Economic Observatory / Regional Economics Applications Laboratory, University of Illinois. The MSA data (unless noted) were seasonally adjusted to be consistent with state totals.

### Talking Points

<p><b>State, Downstate &amp; Metro</b></p>	<ul style="list-style-type: none"> <li>Illinois added 1,900 jobs in July 2015, compared with a 5,600 job loss in June 2015. Compared to July 2014, Illinois has added 50,100 jobs. The three-month moving average, a more stable measure of labor market, showed an increase of 1,200 jobs per month.</li> <li>Illinois has a net loss of 63,900 jobs since the economic crisis developed in December 2007.</li> <li>Since January 2010 when Illinois employment resumed after the national recession, Illinois has added 339,100 new jobs.</li> <li>Chicago-Downstate and Metro-Rural had mixed performances.</li> <li>Illinois Rural area shed 4,500 jobs at -0.61% this month, compared to a revised 11,100 job loss in June 2015. At the same time, Metro added 6,400 jobs at 0.12% in July, compared to a revised 5,500 job gain in the previous month.</li> <li>Chicago added 7,600 jobs at 0.19% in July 2015, compared to a revised 5,200 job gain last month. Meanwhile, Downstate lost 5,700 jobs at -0.30%, compared to a revised 10,800 job loss last month.</li> <li>In terms of the 12-month aggregated account, Metro registered a positive 1.13 % growth by adding 57,900 jobs whereas Rural lost 7,800 jobs at -1.05%. Chicago added 58,200 jobs at 1.46% whereas Downstate lost 8,100 jobs at -0.43%.</li> <li>Through July 2015, the cumulative job growth for Metro, Rural, Chicago and Downstate compared to January 1990 stood at 12.61%, 11.29%, 13.15% and 10.98% respectively.</li> </ul>
<p><b>MSA page (2-4)</b></p>	<ul style="list-style-type: none"> <li>Illinois Metro added 6,400 jobs at 0.12% in July 2015. Five out of ten MSAs posted positive growth.</li> <li>Since the job recovery resumed in January 2010 in Illinois, Chicago Upstate has shown an average growth rate of 11.73%, which is the highest among all the IL MSAs; Decatur has experienced the lowest average growth rate, -3.05%.</li> <li>In terms of growth performance, four MSAs posted net improvements from June to July, three declined in terms of rank.</li> <li>Kankakee remained in the last place in terms of monthly growth performance, while Decatur climbed to the first place.</li> <li>In the 12 months growth league table, Davenport-Rock Island-Moline dropped to the last place and Champaign-Urbana-Rantoul climbed to the first place.</li> </ul>

### Total non-farm Employment growth Jan 1990 – July 2015



### Talking Points

#### State, Downstate & Metro

- While the average growth for Illinois between 1990 and 2008 was 0.04%, the average from December 2007 to June 2015 was -0.01%. This is better than the performance during the 2000-2001 downturns which saw a decline of -0.09%.
- Since the economic crisis in December 2007, the average growth for Metro is -0.01% while for Rural it is -0.05%. The same rate for Chicago (Upstate) is 0.01% and for Downstate it is -0.05%.
- Over the last 12-month period, the average growth rate for Metro was 0.09% and for Rural it was -0.08%.
- Downstate registered a -0.14% average job loss in 2015 compared to an average gain of 0.04% in 2007, -0.11% decline in 2008, -0.35% decline in 2009, 0.13% growth in 2010, 0.01% growth in 2011, 0.11% growth in 2012, -0.03% decline in 2013 and 0.08% job growth in 2014.

#### Average Growth Rates for Illinois, RMW and the Nation

	2011(%)	2012(%)	2013(%)	2014(%)	2015(%)
Illinois	0.08	0.12	0.07	0.09	0.04
RMW	0.13	0.12	0.12	0.12	0.14
Nation	0.13	0.14	0.14	0.19	0.15

#### By MSA

Market Area	July 2015 Number of Jobs	June 2015 – July 2015			Last 12 months	
		Growth compared to Illinois	Growth Rate %	Number Of Jobs	Growth Rate %	Number of Jobs
Bloomington-Normal (B-N)	95,100	+	0.16	200	0.52	500
Champaign-Urbana (C-U-R)	108,700	+	0.22	200	1.98	2,100
Chicago	4,040,100	+	0.19	7,600	1.46	58,200
Davenport-Rock Island-Moline (D-R-M)	180,500	-	-0.51	-900	-1.93	-3,600
Decatur	50,600	+	0.42	200	-0.77	-400
Kankakee	44,800	-	-0.98	-400	0.75	300
Peoria	176,800	+	0.22	400	-1.06	-1,900
Rockford	151,200	-	-0.22	-300	0.82	1,200
Springfield	111,800	-	-0.20	-200	0.01	10
Metro-East	229,300	-	-0.11	-200	0.59	1,300
<b>Illinois</b>			<b>0.03</b>	<b>1,900</b>	<b>0.85</b>	<b>50,100</b>

# MSA League Tables\*: Non-farm Employment Growth Rate

## Monthly growth:

Rank	June 2015	July 2015	Rank	Change**
1	Metro-East(1.43%)	Decatur(0.42%)	1	↑(+3)
2	Bloomington-Normal(1%)	Champaign-Urbana-Rantoul(0.22%)	2	↑(+1)
3	Champaign-Urbana-Rantoul(0.41%)	Peoria(0.22%)	3	↑(+2)
4	Decatur(0.18%)	Chicago(0.19%)	4	↑(+3)
5	Peoria(0.15%)	Bloomington-Normal(0.16%)	5	↓(-3)
6	Springfield (0.15%)	Metro-East(-0.11%)	6	↓(-5)
7	Chicago(0.11%)	Springfield (-0.2%)	7	↓(-1)
8	Rockford (-0.05%)	Rockford (-0.22%)	8	↔(+0)
9	Davenport-Rock Island-Moline(-0.46%)	Davenport-Rock Island-Moline(-0.51%)	9	↔(+0)
10	Kankakee(-0.96%)	Kankakee(-0.98%)	10	↔(+0)

## Growth over last 12-months:

Rank	June 2015	July 2015	Rank	Change**
1	Metro-East (1.86%)	Champaign-Urbana-Rantoul (1.98%)	1	↑(+2)
2	Chicago (1.29%)	Chicago (1.46%)	2	↔(+0)
3	Champaign-Urbana-Rantoul (1.03%)	Rockford (0.82%)	3	↑(+1)
4	Rockford (0.98%)	Kankakee (0.75%)	4	↑(+1)
5	Kankakee (0.96%)	Metro-East (0.59%)	5	↓(-4)
6	Bloomington-Normal (0.54%)	Bloomington-Normal (0.52%)	6	↔(+0)
7	Springfield (-0.17%)	Springfield (0.01%)	7	↔(+0)
8	Davenport-Rock Island-Moline (-0.85%)	Decatur (-0.77%)	8	↑(+1)
9	Decatur (-0.97%)	Peoria (-1.06%)	9	↑(+1)
10	Peoria (-1.35%)	Davenport-Rock Island-Moline (-1.93%)	10	↓(-2)

## Talking Points

### MSA League Tables

- Metro-East (1st to 6th) experienced the deepest fall in July 2015.
- Bloomington-Normal (2nd to 5th) and Springfield (6th to 7th) also dropped in terms of rank from last month.
- The most remarkable upward moves in July were recorded for Decatur (4th to 1st) and Chicago (7th to 4th).
- In the 12-month growth league table, upward moves were recorded for Champaign-Urbana-Rantoul (3rd to 1st), Rockford (4th to 3rd), Kankakee (5th to 4th), Decatur (9th to 8th) and Peoria (10th to 9th).
- Downward moves were recorded for Metro-East (1st to 5th) and Davenport-Rock Island-Moline (8th to 10th).
- In the 12 months growth league table, Davenport-Rock Island-Moline dropped to the last place and Champaign-Urbana-Rantoul climbed to the first place.

\*MSA League Tables are based on revised employment data. For instances of equal growth rate for multiple MSAs ranks are decided based on change of growth rate from previous month.

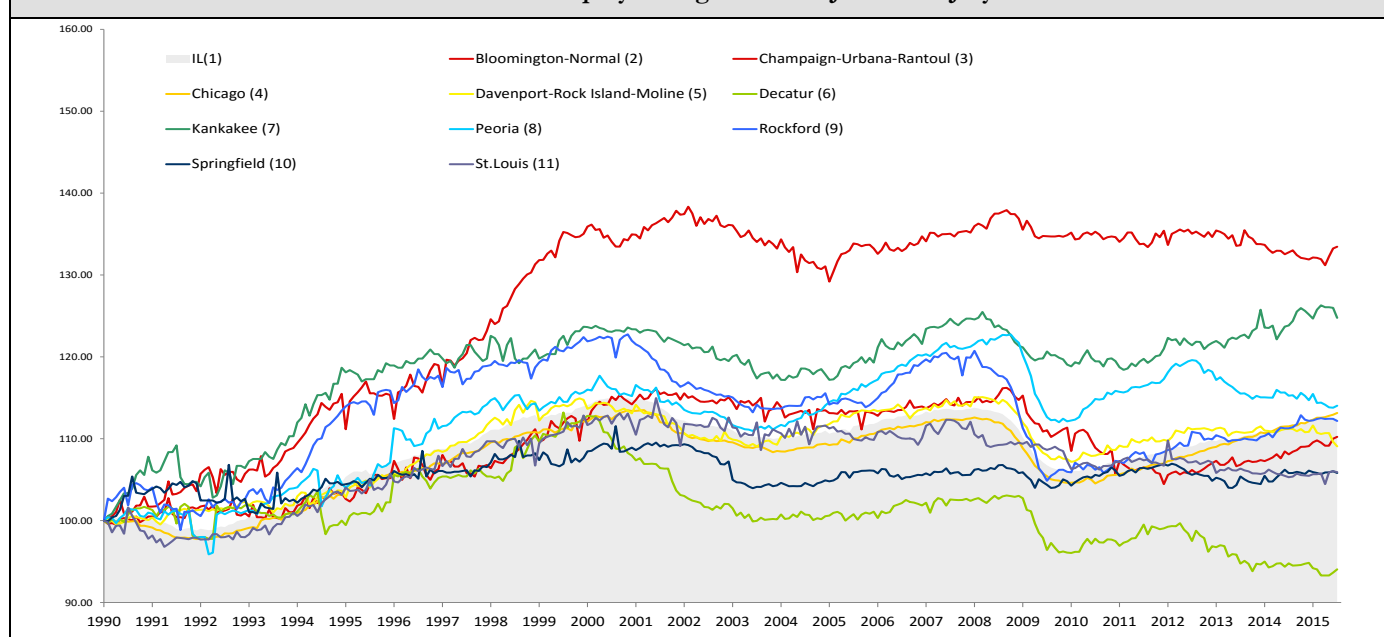
\*\*Changes indicate change in rank position compared to previous month and correspond to the MSA at the right column. Rise is indicated by a '↑' and decline by a '↓' and for an unchanged position a '↔' is used. Figures in parenthesis indicate relative rank change from previous month

### July 2015 MSA Employment by Sectors (000s) \*

Market Area	Construction (CON)	Manufacturing (MAN)	Trade, transportation & utilities (TTU)	Information (INF)	Financial activities (FIN)	Professional & business services (PRO)	Education & health (EDU)	Leisure & hospitality (LEI)	Other Services (OTH)	Government (GOV)
Bloomington-Normal	2.37 (2.5%)	4.82 (5.1%)	15.78 (16.6%)	0.7 (0.7%)	11.97 (12.6%)	17.74 (18.6%)	10.92 (11.5%)	11.47 (12.1%)	3.78 (4%)	15.56 (16.4%)
Champaign-Urbana	3.23 (3%)	7.97 (7.3%)	16.97 (15.6%)	2.41 (2.2%)	4.33 (4%)	8.25 (7.6%)	14.8 (13.6%)	11.76 (10.8%)	3.37 (3.1%)	35.73 (32.9%)
Chicago	135.26 (3.3%)	335.46 (8.3%)	818.15 (20.3%)	74.27 (1.8%)	267.46 (6.6%)	755.66 (18.7%)	619.73 (15.3%)	383.85 (9.5%)	172.11 (4.3%)	475.72 (11.8%)
Davenport-Rock Island-Moline	8.78 (4.9%)	23.45 (13%)	39.76 (22%)	2.28 (1.3%)	7.96 (4.4%)	21.75 (12%)	24.39 (13.5%)	19.36 (10.7%)	7.23 (4%)	25.6 (14.2%)
Decatur	3.33 (6.6%)	10.11 (20%)	10.53 (20.8%)	0.6 (1.2%)	1.88 (3.7%)	3.41 (6.7%)	8.35 (16.5%)	4.81 (9.5%)	2.19 (4.3%)	5.39 (10.7%)
Kankakee	1.15 (2.6%)	5.85 (13.1%)	10.68 (23.9%)	0.47 (1.1%)	1.85 (4.1%)	4.05 (9%)	8.22 (18.3%)	3.92 (8.8%)	1.7 (3.8%)	6.92 (15.5%)
Peoria	7.65 (4.3%)	25.64 (14.5%)	32.29 (18.3%)	2.18 (1.2%)	7.56 (4.3%)	19.38 (11%)	34.09 (19.3%)	19.44 (11%)	7.81 (4.4%)	20.75 (11.7%)
Rockford	4.53 (3%)	32.41 (21.4%)	28.98 (19.2%)	1.41 (0.9%)	5.45 (3.6%)	16.1 (10.6%)	23.52 (15.6%)	13.31 (8.8%)	8.75 (5.8%)	16.59 (11%)
Springfield	4.48 (4%)	3.05 (2.7%)	17.44 (15.6%)	1.71 (1.5%)	7 (6.3%)	10.53 (9.4%)	20.72 (18.5%)	10.71 (9.6%)	6.51 (5.8%)	29.44 (26.3%)
IL	211.59 (3.6%)	572.24 (9.7%)	1192.01 (20.1%)	97.47 (1.6%)	367.33 (6.2%)	936.43 (15.8%)	898.43 (15.2%)	564.51 (9.5%)	251.15 (4.2%)	826.58 (13.9%)

\*The Illinois Department of Employment Security does not collect sector employment data for Metro-East

### Total non-farm Employment growth rate Jan 1990 – July 2015



MSA DESCRIPTION: **Bloomington-Normal (B-N):** McLean Co. **Champaign-Urbana (C-U-R):** Champaign Co., Ford Co. & Piatt Co. **Chicago:** Cook Co. IL, DeKalb Co. IL, DuPage Co. IL, Grundy Co. IL, Kane Co. IL, Kendall Co. IL, Lake Co. IL, McHenry Co. IL, Will Co. IL & Kenosha Co. WI **Davenport-Moline-Rock Island (D-R-M):** Henry Co. IL, Mercer Co. IL, Rock Island Co. IL & Scott Co. IA **Decatur:** Macon Co. **Kankakee:** Kankakee Co. **Metro-East:** Bond Co., Calhoun Co., Clinton Co., Jersey Co., Macoupin Co., Madison Co., Monroe Co. & St. Clair Co. **Peoria-Pekin (Peoria):** Marshall Co., Peoria Co., Stark Co., Tazewell Co. & Woodford Co. **Rockford:** Boone Co. & Winnebago Co. **Springfield:** Menard Co. & Sangamon Co. The MSA data (unless noted) were seasonally adjusted to be consistent with state totals.

# Employment Forecast for MSAs

MSAs	July 2015*	July 2016 (p)*	Number of Jobs *	Growth Rate %	Growth	Sector with Highest Growth Rate (p)	Sector with Lowest Growth Rate (p)
Bloomington-Normal	95,100	95,600	400 ~ 700	0.43%~ 0.72%	+	GOV (3.20%)	INF (-12.10%)
Champaign-Urbana-Rantoul	108,700	108,500	-100~0	-0.13%~0.00%	-	EDU (1.92%)	MAN (-2.35%)
Chicago	4,040,100	4,093,200	53,200~63,300	1.32%~1.57%	+	CON (4.80%)	MAN (-0.97%)
Davenport-Rock Island-Moline	180,500	178,100	-2,400~ -1,400	-1.32%~ -0.80%	-	CON (1.58%)	EDU (-6.48%)
Decatur	50,600	49,900	-600~-500	-1.28%~-1.02%	-	PRO (5.31%)	INF (-5.95%)
Kankakee	44,800	44,700	-100~100	-0.10%~ 0.24%	-	EDU (3.42%)	INF (-7.43%)
Peoria	176,800	177,700	800~1,300	0.46%~ 0.71%	+	GOV (2.65%)	PRO (-5.26%)
Rockford	151,200	150,900	-300~-10	-0.20%~-0.01%	-	EDU (1.73%)	INF (-5.70%)
Springfield	111,800	112,000	200~400	0.15%~ 0.35%	+	EDU (2.69%)	MAN (-4.08%)

\*Total Non-Farm Jobs

