

Illinois Job Index:

MSA Report

Release July 29/2015	data Jan 1990 / June 2015	Issue 15.7	www.real.illinois.edu
-------------------------	------------------------------	---------------	-----------------------

Note: IDES revised their estimates for the number of jobs at the beginning of 2015.

As a companion to the Sep 2014 Illinois Job Index that reports an positive rating, this MSA Report provides a localized picture on Illinois job growth and allows for comparisons between local economies, Illinois, the Nation and the Rest of the Midwest.

July 2015	Total non-farm employment	June 2015 Number of Jobs	May 2015 – June 2015		Last 12 months	
			Growth Rate (%)	Number of Jobs	Growth Rate (%)	Number of Jobs
	Nation	141,842,000	0.16	223,000	2.11	2,935,000
	Rest of Midwest (RMW)	19,930,200	0.06	11,100	1.57	307,200
	Illinois	5,920,200	-0.13	-7,500	0.81	47,500
	Illinois Metro	5,185,300	0.16	8,400	1.06	54,300
	Illinois non-Metro (Rural)	734,900	-2.12	-15,900	-0.92	-6,800
	Illinois Chicago (Upstate)	4,031,600	0.11	4,600	1.29	51,200
	Illinois non-Chicago	1,888,600	-0.64	-12,100	-0.20	-3,700

The monthly Illinois Job Index and MSA Report are provided as tools for elected officials, policy leaders and the public. Understanding the Illinois economy and business climate is enhanced by comparing and measuring Illinois employment growth rates against those of the Rest of the Midwest (RMW: Indiana, Iowa, Michigan, Missouri, Ohio and Wisconsin) and the Nation. Data and analysis are provided by the Illinois Economic Observatory / Regional Economics Applications Laboratory, University of Illinois. The MSA data (unless noted) were seasonally adjusted to be consistent with state totals.

Talking Points

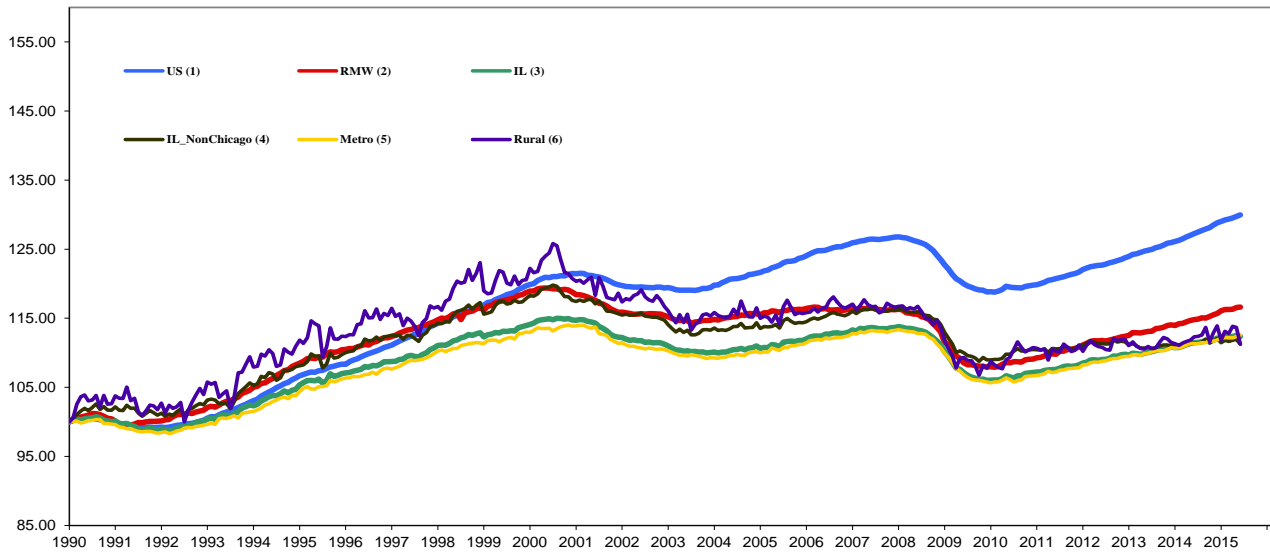
State, Downstate & Metro

- Illinois shed 7,500 jobs in June 2015, compared with a job gain of 7,400 in May 2015. Compared to June 2014, Illinois has added 47,500 jobs. The three-month moving average of jobs, a more stable measure of the labor market, was up by 1,800 jobs per month.
- Illinois has a net loss of 74,300 jobs since the economic crisis developed in December 2007.
- Since January 2010 when Illinois employment resumed after the national recession, Illinois has added 335,300 new jobs.
- Chicago-Downstate and Metro-Rural had mixed performances.
- Illinois Rural area shed 15,900 jobs at -2.12% this month, compared to a revised 900 job loss in May 2015. At the same time, Metro added 8,400 jobs at 0.16% in June, compared to a revised 8,300 job gain in the previous month.
- Chicago added 4,600 jobs at 0.11% in June 2015, compared to a revised 4,800 job gain last month. Meanwhile, Downstate lost 12,100 jobs at -0.64%, compared to a revised 2,600 job gain last month.
- In terms of the 12-month aggregated account, Metro registered a positive 1.06 % growth by adding 54,300 jobs whereas Rural lost 6,800 jobs at -0.92%. Chicago added 51,200 jobs at 1.29% whereas Downstate lost 3,700 jobs at -0.20%.
- Through June 2015, the cumulative job growth for Metro, Rural, Chicago and Downstate compared to January 1990 stood at 12.53%, 11.28%, 12.91% and 11.25% respectively.

MSA page (2-4)

- Illinois Metro added 8,400 jobs at 0.16% in June 2015. Seven out of ten MSAs posted positive growth.
- Since the job recovery resumed in Jan 2010 in Illinois, Chicago Upstate has shown an average growth rate of 11.59%, which is the highest among all the IL MSAs; Decatur has experienced the lowest average growth rate, -4.14%.
- In terms of growth performance, four MSAs posted net improvements from May to June, four declined in terms of rank.
- Kankakee dropped to the last place in terms of monthly growth performance, while Metro-East remained in the first place.
- In terms of 12-month growth performance, Metro-East climbed to the first place while Peoria dropped to the last place.

Total non-farm Employment growth Jan 1990 – June 2015



Talking Points

State, Downstate & Metro

- While the average growth for Illinois between 1990 and 2008 was 0.04%, the average from December 2007 to June 2015 was -0.01%. This is better than the performance during the 2000-2001 downturns which saw a decline of -0.09%.
- Since the economic crisis in December 2007, the average growth for Metro is -0.01% while for Rural it is -0.05%. The same rate for Chicago (Upstate) is 0.00% and for Downstate it is -0.04%.
- Over the last 12-month period, the average growth rate for Metro was 0.09% and for Rural it was -0.07%.
- Downstate registered a -0.13% average job loss in 2015 compared to an average gain of 0.04% in 2007, -0.11% decline in 2008, -0.35% decline in 2009, 0.13% growth in 2010, 0.01% growth in 2011, 0.11% growth in 2012, -0.03% decline in 2013 and 0.08% job growth in 2014.

Average Growth Rates for Illinois, RMW and the Nation

	2011(%)	2012(%)	2013(%)	2014(%)	2015(%)
Illinois	0.08	0.12	0.07	0.09	0.04
RMW	0.13	0.12	0.12	0.12	0.13
Nation	0.13	0.14	0.14	0.19	0.15

By MSA

Market Area	June 2015 Number of Jobs	May 2015 – June 2015			Last 12 months	
		Growth compared to Illinois	Growth Rate %	Number Of Jobs	Growth Rate %	Number of Jobs
Bloomington-Normal (B-N)	95,100	+	1.00	900	0.54	500
Champaign-Urbana (C-U-R)	108,000	+	0.41	400	1.03	1,100
Chicago	4,031,600	+	0.11	4,600	1.29	51,200
Davenport-Rock Island-Moline (D-R-M)	182,400	-	-0.46	-800	-0.85	-1,600
Decatur	50,200	+	0.18	100	-0.97	-500
Kankakee	44,800	-	-0.96	-400	0.96	400
Peoria	176,800	+	0.15	300	-1.35	-2,400
Rockford	151,500	+	-0.05	-100	0.98	1,500
Springfield	112,100	+	0.15	200	-0.17	-200
Metro-East	232,600	+	1.43	3,300	1.86	4,200
Illinois			-0.13	-7,500	0.81	47,500

MSA League Tables*: Non-farm Employment Growth Rate

Monthly growth:

Rank	May 2015	June 2015	Rank	Change**
1	Metro-East(1.37%)	Metro-East(1.43%)	1	←(+0)
2	Bloomington-Normal(0.69%)	Bloomington-Normal(1%)	2	←(+0)
3	Rockford (0.09%)	Champaign-Urbana-Rantoul(0.41%)	3	↑(+7)
4	Chicago(0.09%)	Decatur(0.18%)	4	↑(+3)
5	Davenport-Rock Island-Moline(0.07%)	Peoria(0.15%)	5	↑(+4)
6	Kankakee(0.02%)	Springfield (0.15%)	6	↑(+2)
7	Decatur(-0.01%)	Chicago(0.11%)	7	↓(-3)
8	Springfield (-0.12%)	Rockford (-0.05%)	8	↓(-5)
9	Peoria(-0.17%)	Davenport-Rock Island-Moline(-0.46%)	9	↓(-4)
10	Champaign-Urbana-Rantoul(-0.2%)	Kankakee(-0.96%)	10	↓(-4)

Growth over last 12-months:

Rank	May 2015	June 2015	Rank	Change**
1	Kankakee (2.54%)	Metro-East (1.86%)	1	↑(+4)
2	Champaign-Urbana-Rantoul (1.19%)	Chicago (1.29%)	2	↑(+1)
3	Chicago (1.16%)	Champaign-Urbana-Rantoul (1.03%)	3	↓(-1)
4	Rockford (1.05%)	Rockford (0.98%)	4	←(+0)
5	Metro-East (0.25%)	Kankakee (0.96%)	5	↓(-4)
6	Springfield (-0.11%)	Bloomington-Normal (0.54%)	6	↑(+2)
7	Davenport-Rock Island-Moline (-0.2%)	Springfield (-0.17%)	7	↓(-1)
8	Bloomington-Normal (-0.44%)	Davenport-Rock Island-Moline (-0.85%)	8	↓(-1)
9	Peoria (-1.41%)	Decatur (-0.97%)	9	↑(+1)
10	Decatur (-1.59%)	Peoria (-1.35%)	10	↓(-1)

Talking Points

MSA League Tables

- Rockford (3rd to 8th) experienced the deepest fall in June 2015.
- Chicago (4th to 7th), Davenport (5th to 9th) and Kankakee (6th to 10th) also dropped in terms of rank from last month.
- The most remarkable upward move in June was recorded for Champaign-Urbana-Rantoul (10th to 3rd).
- In the 12-month growth league table, upward moves were recorded for Metro-East (5th to 1st), Chicago (3rd to 2nd), Bloomington-Normal (8th to 6th) and Decatur (10th to 9th).
- Downward moves were recorded for Champaign-Urbana-Rantoul (2nd to 3rd), Kankakee (1th to 5th), Springfield (6th to 7th), Davenport (5th to 9th) and Peoria (9th to 10th).
- In the 12 months growth league table, Peoria dropped to the last place and Metro-East climbed to the first place.

*MSA League Tables are based on revised employment data. For instances of equal growth rate for multiple MSAs ranks are decided based on change of growth rate from previous month.

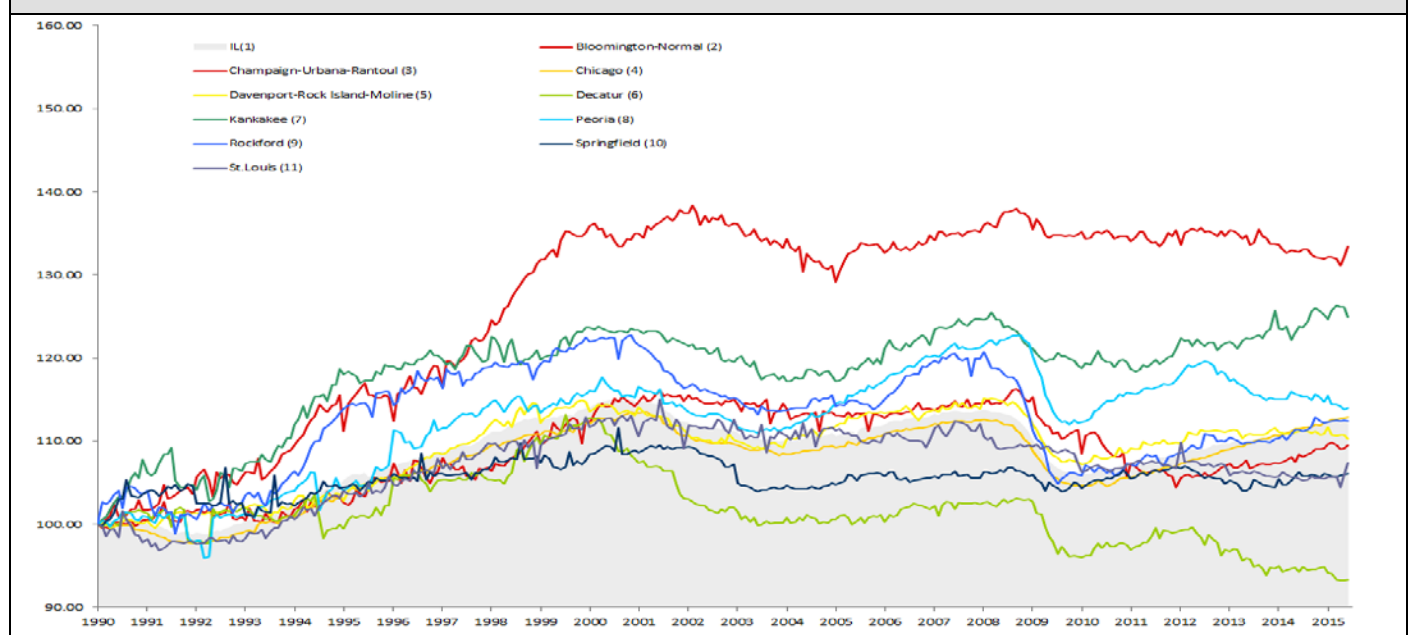
**Changes indicate change in rank position compared to previous month and correspond to the MSA at the right column. Rise is indicated by a '↑' and decline by a '↓' and for an unchanged position a '←' is used. Figures in parenthesis indicate relative rank change from previous month

June 2015 MSA Employment by Sectors (000s) *

Market Area	Construction (CON)	Manufacturing (MAN)	Trade, transportation & utilities (TTU)	Information (INF)	Financial activities (FIN)	Professional & business services (PRO)	Education & health (EDU)	Leisure & hospitality (LEI)	Other Services (OTH)	Government (GOV)
Bloomington-Normal	2.41 (2.5%)	4.79 (5%)	15.53 (16.3%)	0.7 (0.7%)	12.02 (12.6%)	17.7 (18.6%)	10.82 (11.4%)	11.44 (12%)	3.78 (4%)	15.64 (16.4%)
Champaign-Urbana	3.25 (3%)	7.97 (7.4%)	16.71 (15.5%)	2.43 (2.2%)	4.35 (4%)	8.32 (7.7%)	14.51 (13.4%)	11.41 (10.6%)	3.35 (3.1%)	36.03 (33.4%)
Chicago	133.13 (3.3%)	334.89 (8.3%)	817.04 (20.3%)	74.48 (1.8%)	267.47 (6.6%)	753.59 (18.7%)	621.74 (15.4%)	382.29 (9.5%)	170.93 (4.2%)	474.85 (11.8%)
Davenport-Rock Island-Moline	9.07 (5%)	23.61 (12.9%)	39.68 (21.8%)	2.41 (1.3%)	7.95 (4.4%)	22.48 (12.3%)	25.2 (13.8%)	19.12 (10.5%)	7.26 (4%)	25.64 (14.1%)
Decatur	3.34 (6.6%)	10.08 (20.1%)	10.53 (21%)	0.6 (1.2%)	1.89 (3.8%)	3.3 (6.6%)	8.02 (16%)	4.91 (9.8%)	2.11 (4.2%)	5.46 (10.9%)
Kankakee	1.17 (2.6%)	6 (13.4%)	10.55 (23.5%)	0.39 (0.9%)	1.85 (4.1%)	4.07 (9.1%)	8.25 (18.4%)	4.03 (9%)	1.7 (3.8%)	6.96 (15.5%)
Peoria	7.69 (4.3%)	25.59 (14.5%)	32.35 (18.3%)	2.19 (1.2%)	7.58 (4.3%)	19.56 (11.1%)	34.62 (19.6%)	18.87 (10.7%)	7.79 (4.4%)	20.65 (11.7%)
Rockford	4.56 (3%)	32.8 (21.6%)	29.22 (19.3%)	1.35 (0.9%)	5.54 (3.7%)	16.05 (10.6%)	23.54 (15.5%)	13.26 (8.7%)	8.79 (5.8%)	16.54 (10.9%)
Springfield	4.7 (4.2%)	2.97 (2.7%)	17.6 (15.7%)	1.71 (1.5%)	7.01 (6.3%)	10.66 (9.5%)	20.74 (18.5%)	10.59 (9.4%)	6.44 (5.7%)	29.62 (26.4%)
IL	211.08 (3.6%)	571.67 (9.7%)	1188.82 (20.1%)	97.56 (1.6%)	366.38 (6.2%)	936.39 (15.8%)	899.09 (15.2%)	561.44 (9.5%)	250.55 (4.2%)	824.86 (13.9%)

*The Illinois Department of Employment Security does not collect sector employment data for Metro-East

Total non-farm Employment growth rate Jan 1990 – June 2015



MSA DESCRIPTION: **Bloomington-Normal (B-N):** McLean Co. **Champaign-Urbana (C-U-R):** Champaign Co., Ford Co. & Piatt Co. **Chicago:** Cook Co. IL, DeKalb Co. IL, DuPage Co. IL, Grundy Co. IL, Kane Co. IL, Kendall Co. IL, Lake Co. IL, McHenry Co. IL, Will Co. IL & Kenosha Co. WI **Davenport-Moline-Rock Island (D-R-M):** Henry Co. IL, Mercer Co. IL, Rock Island Co. IL & Scott Co. IA **Decatur:** Macon Co. **Kankakee:** Kankakee Co. **Metro-East:** Bond Co., Calhoun Co., Clinton Co., Jersey Co., Macoupin Co., Madison Co., Monroe Co. & St. Clair Co. **Peoria-Pekin (Peoria):** Marshall Co., Peoria Co., Stark Co., Tazewell Co. & Woodford Co. **Rockford:** Boone Co. & Winnebago Co. **Springfield:** Menard Co. & Sangamon Co. The MSA data (unless noted) were seasonally adjusted to be consistent with state totals.

Employment Forecast for MSAs

MSAs	June 2015*	June 2016 (p)*	Number of Jobs *	Growth Rate %	Growth	Sector with Highest Growth Rate (p)	Sector with Lowest Growth Rate (p)
Bloomington-Normal	95,100	95,400	300 ~ 800	0.32%~ 0.82%	+	GOV (2.98%)	INF (-10.92%)
Champaign-Urbana-Rantoul	108,000	107,600	-400~-100	-0.36%~-0.09%	-	EDU (1.25%)	CON (-3.97%)
Chicago	4,031,600	4,065,900	34,300~43,500	0.85%~1.08%	+	PRO (2.68%)	MAN (-2.73%)
Davenport-Rock Island-Moline	182,400	181,300	-1,100~ -700	-0.58%~ -0.41%	-	EDU (1.00%)	INF (-5.33%)
Decatur	50,200	49,600	-700~-500	-1.31%~-1.08%	-	PRO (5.11%)	INF (-5.80%)
Kankakee	44,800	44,900	30~200	0.18%~ 0.55%	+	INF (3.06%)	PRO (-2.74%)
Peoria	176,800	176,900	100~700	0.04 %~ 0.40%	+	GOV (3.05%)	PRO (-5.05%)
Rockford	151,500	151,200	-300~-30	-0.20%~-0.02%	-	MAN (1.81%)	CON (-7.07%)
Springfield	112,100	112,000	-200~-100	-0.14%~ -0.08%	-	EDU (2.28%)	INF (-3.08%)

*Total Non-Farm Jobs

