

Illinois Job Index:

MSA Report

Release June 29/2015	data Jan 1990 / May 2015	Issue 15.6	www.real.illinois.edu
-------------------------	-----------------------------	---------------	-----------------------

Note: IDES revised their estimates for the number of jobs at the beginning of 2015.

As a companion to the Sep 2014 Illinois Job Index that reports an positive rating, this MSA Report provides a localized picture on Illinois job growth and allows for comparisons between local economies, Illinois, the Nation and the Rest of the Midwest.

June 2015	Total non-farm employment	May 2015 Number of Jobs	Apr 2015 – May 2015		Last 12 months	
			Growth Rate (%)	Number of Jobs	Growth Rate (%)	Number of Jobs
	Nation	141,679,000	0.20	280,000	2.21	3,058,000
	Rest of Midwest (RMW)	19,930,100	0.24	48,700	1.68	328,700
	Illinois	5,929,500	0.16	9,200	1.06	62,100
	Illinois Metro	5,174,900	0.14	7,000	0.91	46,500
	Illinois non-Metro (Rural)	754,600	0.29	2,200	2.11	15,600
	Illinois Chicago (Upstate)	4,025,300	0.09	3,700	1.16	46,200
	Illinois non-Chicago	1,904,200	0.29	5,500	0.84	15,900

The monthly Illinois Job Index and MSA Report are provided as tools for elected officials, policy leaders and the public. Understanding the Illinois economy and business climate is enhanced by comparing and measuring Illinois employment growth rates against those of the Rest of the Midwest (RMW: Indiana, Iowa, Michigan, Missouri, Ohio and Wisconsin) and the Nation. Data and analysis are provided by the Illinois Economic Observatory / Regional Economics Applications Laboratory, University of Illinois. The MSA data (unless noted) were seasonally adjusted to be consistent with state totals.

Talking Points

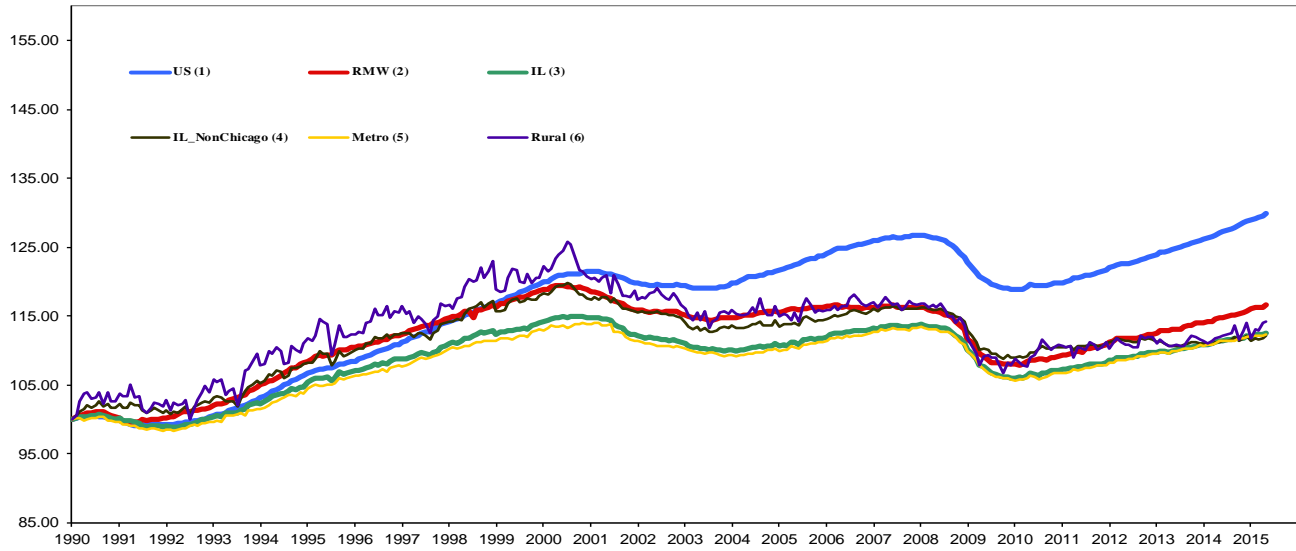
State, Downstate & Metro

- Illinois added 9,200 jobs in May 2015, compared with a job gain of 5,400 in April 2015. Compared to May 2014, Illinois has added 62,100 jobs. The three-month moving average of jobs, a more stable measure of the labor market, was up by 4,100 jobs per month.
- Illinois has a net loss of 58,400 jobs since the economic crisis developed in December 2007.
- Since January 2010 when Illinois employment resumed after the national recession, Illinois has added 344,600 new jobs.
- Chicago-Downstate and Metro-Rural all had positive performances.
- Illinois Rural area added 2,200 jobs at 0.29% this month, compared to a revised 7,200 job gain in April 2015. At the same time, Metro added 7,000 jobs at 0.14% in May, compared to a revised 1,800 job loss in the previous month.
- Chicago added 3,700 jobs at 0.09% in May 2015, compared to a revised 2,200 job gain last month. Meanwhile, Downstate added 5,500 jobs at 0.29%, compared to a revised 3,200 job gain last month.
- In terms of the 12-month aggregated account, Metro registered a positive 0.91 % growth by adding 46,500 jobs whereas Rural added 15,600 jobs at 2.11%. Chicago added 46,200 jobs at 1.16% whereas Downstate added 15,900 jobs at 0.84%.
- Through May 2015, the cumulative job growth for Metro, Rural, Chicago and Downstate compared to January 1990 stood at 12.31%, 14.25%, 12.73% and 12.17% respectively.

MSA page (2-4)

- Illinois Metro added 7,000 jobs at 0.14% in May 2015. Six out of ten MSAs posted positive growth.
- Since the job recovery resumed in Jan 2010 in Illinois, Chicago Upstate has shown an average growth rate of 11.53%, which is the highest among all the IL MSAs; Decatur has experienced the lowest average growth rate, -4.58%.
- In terms of growth performance, four MSAs posted net improvements from April to May, six declined in terms of rank.
- Champaign-Urbana-Rantoul dropped to the last place in terms of monthly growth performance, while Metro-East climbed to the first place.
- In terms of 12-month growth performance, Kankakee remained in the first place while Decatur dropped to the last place.

Total non-farm Employment growth Jan 1990 – May 2015



Talking Points

State, Downstate & Metro

- While the average growth for Illinois between 1990 and 2008 was 0.04%, the average from December 2007 to May 2015 was -0.01%. This is better than the performance during the 2000-2001 downturns which saw a decline of -0.09%.
- Since the economic crisis in December 2007, the average growth for Metro is -0.01% while for Rural it is -0.02%. The same rate for Chicago (Upstate) is 0.00% and for Downstate it is -0.04%.
- Over the last 12-month period, the average growth rate for Metro was 0.08% and for Rural it was 0.18%.
- Downstate registered a -0.01% average job loss in 2015 compared to an average gain of 0.04% in 2007, -0.11% decline in 2008, -0.35% decline in 2009, 0.13% growth in 2010, 0.01% growth in 2011, 0.11% growth in 2012, -0.03% decline in 2013 and 0.08% job growth in 2014.

Average Growth Rates for Illinois, RMW and the Nation

	2011(%)	2012(%)	2013(%)	2014(%)	2015(%)
Illinois	0.08	0.12	0.07	0.09	0.08
RMW	0.13	0.12	0.12	0.12	0.16
Nation	0.13	0.14	0.14	0.19	0.15

By MSA

Market Area	May 2015 Number of Jobs	April 2015 – May 2015			Last 12 months	
		Growth compared to Illinois	Growth Rate %	Number Of Jobs	Growth Rate %	Number of Jobs
Bloomington-Normal (B-N)	94,200	+	0.69	600	-0.44	-400
Champaign-Urbana (C-U-R)	107,200	-	-0.20	-200	1.19	1,300
Chicago	4,025,300	-	0.09	3,700	1.16	46,200
Davenport-Rock Island-Moline (D-R-M)	183,500	-	0.07	100	-0.20	-400
Decatur	50,100	-	-0.01	-10	-1.59	-800
Kankakee	45,300	-	0.02	10	2.54	1,100
Peoria	176,700	-	-0.17	-300	-1.41	-2,500
Rockford	151,700	-	0.09	100	1.05	1,600
Springfield	111,700	-	-0.12	-100	-0.11	-100
Metro-East	229,200	+	1.37	3,100	0.25	600
Illinois			0.16	9,200	1.06	62,100

MSA League Tables*: Non-farm Employment Growth Rate

Monthly growth:

Rank	April 2015	May 2015	Rank	Change**
1	Springfield (0.18%)	Metro-East(1.37%)	1	↑(+9)
2	Davenport-Rock Island-Moline(0.17%)	Bloomington-Normal(0.69%)	2	↑(+6)
3	Chicago(0.07%)	Rockford (0.09%)	3	↑(+1)
4	Rockford (-0.09%)	Chicago(0.09%)	4	↓(-1)
5	Decatur(-0.15%)	Davenport-Rock Island-Moline(0.07%)	5	↓(-3)
6	Champaign-Urbana-Rantoul(-0.27%)	Kankakee(0.02%)	6	↑(+3)
7	Peoria(-0.36%)	Decatur(-0.01%)	7	↓(-2)
8	Bloomington-Normal(-0.37%)	Springfield (-0.12%)	8	↓(-7)
9	Kankakee(-0.45%)	Peoria(-0.17%)	9	↓(-2)
10	Metro-East(-1.2%)	Champaign-Urbana-Rantoul(-0.2%)	10	↓(-4)

Growth over last 12-months:

Rank	April 2015	May 2015	Rank	Change**
1	Kankakee (2.79%)	Kankakee (2.54%)	1	←(+0)
2	Rockford (1.38%)	Champaign-Urbana-Rantoul (1.19%)	2	↑(+2)
3	Chicago (1.31%)	Chicago (1.16%)	3	←(+0)
4	Champaign-Urbana-Rantoul (1.12%)	Rockford (1.05%)	4	↓(-2)
5	Springfield (0.56%)	Metro-East (0.25%)	5	↑(+2)
6	Davenport-Rock Island-Moline (-0.05%)	Springfield (-0.11%)	6	↓(-1)
7	Metro-East (-1.19%)	Davenport-Rock Island-Moline (-0.2%)	7	↓(-1)
8	Bloomington-Normal (-1.32%)	Bloomington-Normal (-0.44%)	8	←(+0)
9	Decatur (-1.54%)	Peoria (-1.41%)	9	↑(+1)
10	Peoria (-1.73%)	Decatur (-1.59%)	10	↓(-1)

Talking Points

MSA League Tables

- Springfield (1st to 8th) experienced the deepest fall in May 2015.
- Chicago (3th to 4th), Davenport (2nd to 5th), Decatur (5th to 7th), Peoria (7th to 9th) and Champaign (6th to 10th) also dropped in terms of rank from last month.
- The most remarkable upward move in May was recorded for Metro-East (10th to 1st).
- In the 12-month growth league table, upward moves were recorded for Champaign-Urbana (4th to 2nd), Metro-East (7th to 5th) and Peoria (10th to 9th).
- Downward moves were recorded for Rockford (2nd to 4th), Springfield (5th to 6th), Davenport (6th to 7th) and Decatur (9th to 10th).
- In the 12 months growth league table, Decatur dropped to the last place and Kankakee remained in the first place.

*MSA League Tables are based on revised employment data. For instances of equal growth rate for multiple MSAs ranks are decided based on change of growth rate from previous month.

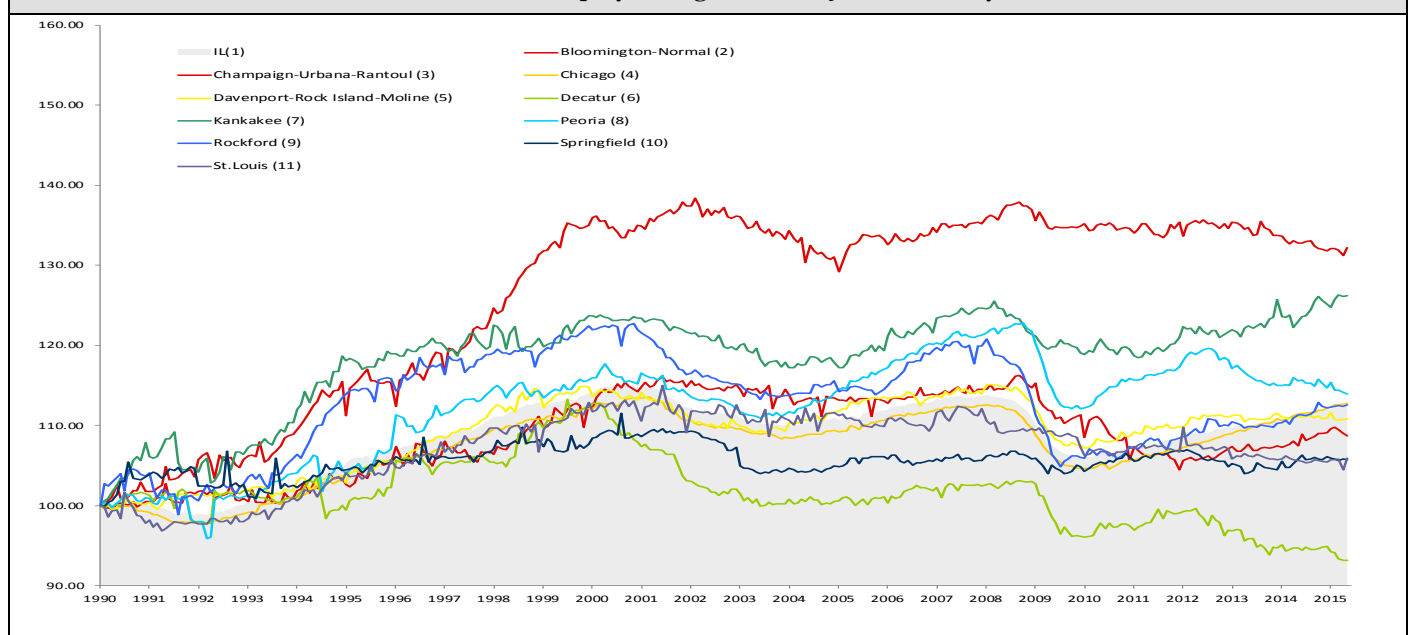
**Changes indicate change in rank position compared to previous month and correspond to the MSA at the right column. Rise is indicated by a '↑' and decline by a '↓' and for an unchanged position a '←' is used. Figures in parenthesis indicate relative rank change from previous month

May 2015 MSA Employment by Sectors (000s) *

Market Area	Construction (CON)	Manufacturing (MAN)	Trade, transportation & utilities (TTU)	Information (INF)	Financial activities (FIN)	Professional & business services (PRO)	Education & health (EDU)	Leisure & hospitality (LEI)	Other Services (OTH)	Government (GOV)
Bloomington-Normal	2.42 (2.6%)	4.78 (5.1%)	15.47 (16.4%)	0.7 (0.7%)	12 (12.7%)	17.15 (18.2%)	10.84 (11.5%)	11.36 (12.1%)	3.77 (4%)	15.62 (16.6%)
Champaign-Urbana	3.14 (2.9%)	7.99 (7.5%)	16.78 (15.6%)	2.41 (2.2%)	4.42 (4.1%)	8.28 (7.7%)	14.46 (13.5%)	11.12 (10.4%)	3.39 (3.2%)	34.87 (32.5%)
Chicago	132.69 (3.3%)	335.39 (8.3%)	813.8 (20.2%)	74.34 (1.8%)	266.85 (6.6%)	751.7 (18.7%)	619.15 (15.4%)	383.52 (9.5%)	171.73 (4.3%)	474.83 (11.8%)
Davenport-Rock Island-Moline	9.43 (5.1%)	23.56 (12.8%)	39.88 (21.7%)	2.43 (1.3%)	7.81 (4.3%)	22.55 (12.3%)	25.37 (13.8%)	19.27 (10.5%)	7.24 (3.9%)	25.96 (14.1%)
Decatur	3.25 (6.5%)	10.09 (20.1%)	10.57 (21.1%)	0.6 (1.2%)	1.89 (3.8%)	3.32 (6.6%)	7.97 (15.9%)	4.84 (9.7%)	2.2 (4.4%)	5.49 (10.9%)
Kankakee	1.24 (2.7%)	5.98 (13.2%)	10.58 (23.4%)	0.4 (0.9%)	1.94 (4.3%)	3.88 (8.6%)	8.61 (19%)	4.03 (8.9%)	1.7 (3.8%)	7 (15.4%)
Peoria	7.71 (4.4%)	26 (14.7%)	32.27 (18.3%)	2.2 (1.2%)	7.5 (4.2%)	19.98 (11.3%)	34.33 (19.4%)	18 (10.2%)	7.91 (4.5%)	20.84 (11.8%)
Rockford	4.5 (3%)	32.78 (21.6%)	29.07 (19.2%)	1.37 (0.9%)	5.49 (3.6%)	16.12 (10.6%)	23.72 (15.6%)	13.25 (8.7%)	8.74 (5.8%)	16.62 (11%)
Springfield	4.87 (4.4%)	3.04 (2.7%)	17.46 (15.6%)	1.71 (1.5%)	7.03 (6.3%)	10.48 (9.4%)	20.59 (18.4%)	10.82 (9.7%)	6.42 (5.7%)	29.61 (26.5%)
IL	211.61 (3.6%)	572.31 (9.7%)	1184.5 (20%)	97.49 (1.6%)	364.65 (6.2%)	937.07 (15.8%)	900.04 (15.2%)	559.95 (9.5%)	252.24 (4.3%)	825.04 (14%)

* The Illinois Department of Employment Security does not collect sector employment data for Metro-East

Total non-farm Employment growth rate Jan 1990 – May 2015



MSA DESCRIPTION: **Bloomington-Normal (B-N):** McLean Co. **Champaign-Urbana (C-U-R):** Champaign Co., Ford Co. & Piatt Co. **Chicago:** Cook Co. IL, DeKalb Co. IL, DuPage Co. IL, Grundy Co. IL, Kane Co. IL, Kendall Co. IL, Lake Co. IL, McHenry Co. IL, Will Co. IL & Kenosha Co. WI **Davenport-Rock Island (D-R-M):** Henry Co. IL, Mercer Co. IL, Rock Island Co. IL & Scott Co. IA **Decatur:** Macon Co. **Kankakee:** Kankakee Co. **Metro-East:** Bond Co., Calhoun Co., Clinton Co., Jersey Co., Macoupin Co., Madison Co., Monroe Co. & St. Clair Co. **Peoria-Pekin (Peoria):** Marshall Co., Peoria Co., Stark Co., Tazewell Co. & Woodford Co. **Rockford:** Boone Co. & Winnebago Co. **Springfield:** Menard Co. & Sangamon Co. The MSA data (unless noted) were seasonally adjusted to be consistent with state totals.

Employment Forecast for MSAs

MSAs	May 2015*	May 2016 (p)*	Number of Jobs *	Growth Rate %	Growth	Sector with Highest Growth Rate (p)	Sector with Lowest Growth Rate (p)
Bloomington-Normal	94,200	95,100	800 ~ 1,000	1.11%~ 0.87%	+	GOV (3.66%)	INF (-10.36%)
Champaign-Urbana-Rantoul	107,200	107,100	-200~100	-0.14%~ 0.08%	-	GOV (1.74%)	CON (-2.44%)
Chicago	4,025,300	4,062,400	37,200~46,600	0.92%~1.16%	+	CON (3.08%)	FIN (-1.55%)
Davenport-Rock Island-Moline	183,500	182,900	-600~ -200	-0.31%~ -0.10%	-	EDU (1.08%)	INF (-6.17%)
Decatur	50,100	49,200	-900~-800	-1.77%~-1.62%	-	LEI (0.49%)	INF (-6.38%)
Kankakee	45,300	45,100	-200~-40	-0.49%~ -0.08%	-	INF (4.49%)	CON (-7.61%)
Peoria	176,700	176,700	0~700	0.00 %~ 0.37%	+	TTU (2.80%)	FIN (-4.42%)
Rockford	151,700	151,900	200~400	0.13%~0.29%	+	MAN (2.50%)	CON (-4.31%)
Springfield	111,700	111,400	-300~-100	-0.24%~ -0.11%	-	EDU (1.70%)	MAN (-3.86%)

*Total Non-Farm Jobs

