

Illinois Job Index:

MSA Report

| | | | |
|------------------------|-----------------------------------|----------------|-----------------------|
| Release Oct 29/2015 | data Jan 1990 / September 2015 | Issue 15.10 | www.real.illinois.edu |
|------------------------|-----------------------------------|----------------|-----------------------|

Note: IDES revised their estimates for the number of jobs at the beginning of 2015.

As a companion to the Sep 2014 Illinois Job Index that reports an positive rating, this MSA Report provides a localized picture on Illinois job growth and allows for comparisons between local economies, Illinois, the Nation and the Rest of the Midwest.

| Oct 2015 | Total non-farm employment | September 2015 Number of Jobs | Aug 2015 – Sep 2015 | | Last 12 months | |
|-------------|-----------------------------------|-------------------------------------|-----------------------|-------------------|-----------------------|-------------------|
| | | | Growth Rate (%) | Number of Jobs | Growth Rate (%) | Number of Jobs |
| | Nation | 142,371,000 | 0.10 | 142,000 | 1.97 | 2,752,000 |
| | Rest of Midwest (RMW) | 19,959,100 | -0.20 | -39,700 | 1.52 | 298,000 |
| | Illinois | 5,909,200 | -0.12 | -6,900 | 0.38 | 22,300 |
| | Illinois Metro | 5,167,900 | 0.01 | 300 | 0.60 | 31,000 |
| | Illinois non-Metro (Rural) | 741,300 | -0.96 | -7,200 | -1.15 | -8,700 |
| | Illinois Chicago (Upstate) | 4,019,600 | -0.02 | -900 | 0.84 | 33,400 |
| | Illinois non-Chicago | 1,889,600 | -0.32 | -6,000 | -0.59 | -11,100 |

The monthly Illinois Job Index and MSA Report are provided as tools for elected officials, policy leaders and the public. Understanding the Illinois economy and business climate is enhanced by comparing and measuring Illinois employment growth rates against those of the Rest of the Midwest (RMW: Indiana, Iowa, Michigan, Missouri, Ohio and Wisconsin) and the Nation. Data and analysis are provided by the Illinois Economic Observatory / Regional Economics Applications Laboratory, University of Illinois. The MSA data (unless noted) were seasonally adjusted to be consistent with state totals.

Talking Points

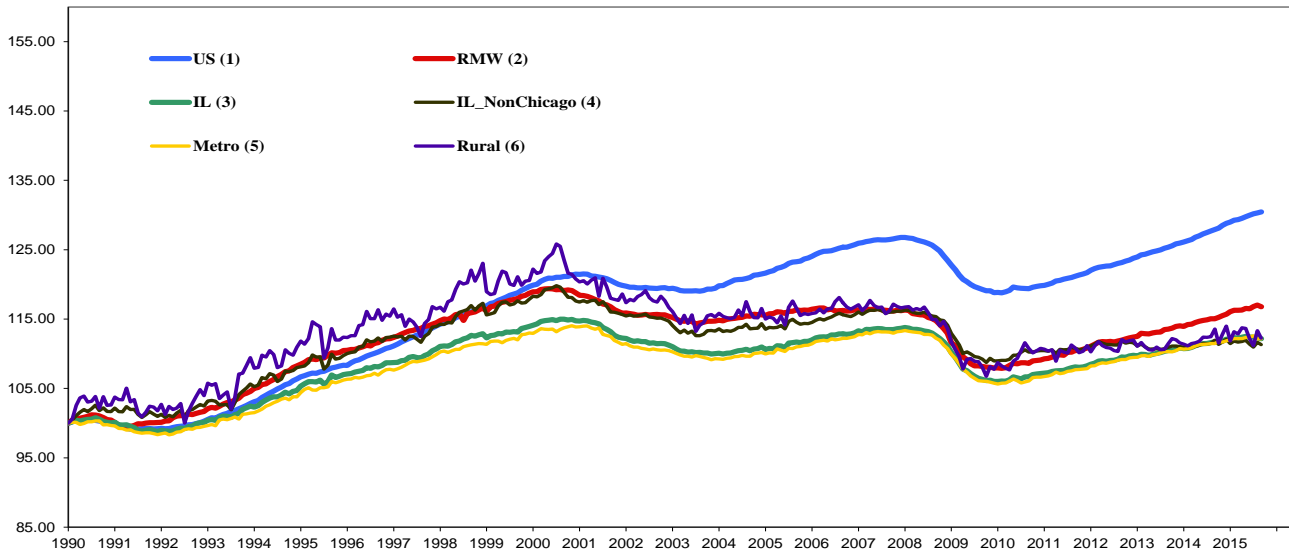
State, Downstate & Metro

- Illinois lost 6,900 jobs in September 2015, compared with a 5,200 job loss in August 2015. Compared to September 2014, Illinois has added 22,300 jobs. The three-month moving average, a more stable measure of labor market, showed a decrease of 4,300 jobs per month.
- Illinois has a net loss of 78,700 jobs since the economic crisis developed in December 2007.
- Since January 2010 when Illinois employment resumed after the national recession, Illinois has added 324,300 new jobs.
- Chicago-Downstate lost jobs compared to last month while Metro-Rural had mixed performances.
- Illinois Rural area lost 7,200 jobs at -0.96% this month, compared to a revised 14,400 job gain in August 2015. At the same time, Metro added 300 jobs at 0.01% in September, compared to a revised 19,600 job loss in the previous month.
- Chicago lost 900 jobs at -0.02% in September 2015, compared to a revised 17,000 job loss last month. Meanwhile, Downstate lost 6,000 jobs at -0.32%, compared to a revised 11,800 job gain last month.
- In terms of the 12-month aggregated account, Metro registered a positive 0.60 % growth by adding 31,000 jobs whereas Rural lost 8,700 jobs at -1.15%. Chicago added 33,400 jobs at 0.84% whereas Downstate lost 11,100 jobs at -0.59%.
- Through September 2015, the cumulative job growth for Metro, Rural, Chicago and Downstate compared to January 1990 stood at 12.15%, 12.25%, 12.57% and 11.31% respectively.

MSA page (2-4)

- Illinois Metro added 300 jobs at 0.01% in September 2015. Five out of ten MSAs posted positive growth.
- Since the job recovery resumed in January 2010 in Illinois, Chicago Upstate has shown an average growth rate of 10.66%, which is the highest among all the IL MSAs; Decatur has experienced the lowest average growth rate, -3.14%.
- In terms of growth performance, four MSAs posted net improvements from August to September, five declined in terms of rank.
- Rockford dropped to the last place in terms of monthly growth performance, while Kankakee climbed to the first place.
- In the 12 months growth league table, Davenport-Rock Island-Moline remained in the last place while Champaign-Urbana-Rantoul remained in the first place.

Total non-farm Employment growth Jan 1990 – September 2015



Talking Points

State, Downstate & Metro

- While the average growth for Illinois between 1990 and 2008 was 0.04%, the average from December 2007 to September 2015 was -0.01%. This is better than the performance during the 2000-2001 downturns which saw a decline of -0.09%.
- Since the economic crisis in December 2007, the average growth for Metro is -0.01% while for Rural it is -0.04%. The same rate for Chicago (Upstate) is 0.00% and for Downstate it is -0.05%.
- Over the last 12-month period, the average growth rate for Metro was 0.05% and for Rural it was -0.09%.
- Downstate registered a -0.08% average job loss in 2015 compared to an average gain of 0.04% in 2007, -0.11% decline in 2008, -0.35% decline in 2009, 0.13% growth in 2010, 0.01% growth in 2011, 0.11% growth in 2012, -0.03% decline in 2013 and 0.08% job growth in 2014.

Average Growth Rates for Illinois, RMW and the Nation

| | 2011(%) | 2012(%) | 2013(%) | 2014(%) | 2015(%) |
|----------|---------|---------|---------|---------|---------|
| Illinois | 0.08 | 0.12 | 0.07 | 0.09 | 0.00 |
| RMW | 0.13 | 0.12 | 0.12 | 0.12 | 0.10 |
| Nation | 0.13 | 0.14 | 0.14 | 0.19 | 0.14 |

By MSA

| Market Area | Sep 2015 Number of Jobs | Aug 2015 – Sep 2015 | | | Last 12 months | |
|--------------------------------------|-------------------------|-----------------------------|---------------|----------------|----------------|----------------|
| | | Growth compared to Illinois | Growth Rate % | Number Of Jobs | Growth Rate % | Number of Jobs |
| Bloomington-Normal (B-N) | 95,100 | + | 0.05 | 50 | 0.71 | 700 |
| Champaign-Urbana (C-U-R) | 109,000 | - | 0.31 | 300 | 1.73 | 1,900 |
| Chicago | 4,019,600 | - | -0.02 | -900 | 0.84 | 33,400 |
| Davenport-Rock Island-Moline (D-R-M) | 179,500 | - | -0.11 | -200 | -2.25 | -4,100 |
| Decatur | 50,500 | + | -0.27 | -100 | -0.73 | -400 |
| Kankakee | 44,700 | - | 1.88 | 800 | -0.70 | -300 |
| Peoria | 176,900 | - | 0.28 | 500 | -0.82 | -1,500 |
| Rockford | 150,500 | + | -0.36 | -500 | -0.15 | -200 |
| Springfield | 112,000 | - | -0.17 | -200 | 0.06 | 100 |
| Metro-East | 230,200 | + | 0.24 | 600 | 0.62 | 1,400 |
| Illinois | | | -0.12 | -6,900 | 0.38 | 22,300 |

MSA League Tables*: Non-farm Employment Growth Rate

Monthly growth:

| Rank | August 2015 | September 2015 | Rank | Change** |
|------|--------------------------------------|--------------------------------------|------|----------|
| 1 | Decatur(0.29%) | Kankakee(1.88%) | 1 | ↑(+9) |
| 2 | Metro-East(0.11%) | Champaign-Urbana-Rantoul(0.31%) | 2 | ↑(+4) |
| 3 | Rockford (0.06%) | Peoria(0.28%) | 3 | ↑(+6) |
| 4 | Bloomington-Normal(0.02%) | Metro-East(0.24%) | 4 | ↓(-2) |
| 5 | Springfield (-0.3%) | Bloomington-Normal(0.05%) | 5 | ↓(-1) |
| 6 | Champaign-Urbana-Rantoul(-0.31%) | Chicago(-0.02%) | 6 | ↑(+2) |
| 7 | Davenport-Rock Island-Moline(-0.34%) | Davenport-Rock Island-Moline(-0.11%) | 7 | ↔(+0) |
| 8 | Chicago(-0.36%) | Springfield (-0.17%) | 8 | ↓(-3) |
| 9 | Peoria(-0.75%) | Decatur(-0.27%) | 9 | ↓(-8) |
| 10 | Kankakee(-2.03%) | Rockford (-0.36%) | 10 | ↓(-7) |

Growth over last 12-months:

| Rank | August 2015 | September 2015 | Rank | Change** |
|------|---------------------------------------|---------------------------------------|------|----------|
| 1 | Champaign-Urbana-Rantoul (1.33%) | Champaign-Urbana-Rantoul (1.73%) | 1 | ↔(+0) |
| 2 | Chicago (0.94%) | Chicago (0.84%) | 2 | ↔(+0) |
| 3 | Rockford (0.76%) | Bloomington-Normal (0.71%) | 3 | ↑(+2) |
| 4 | Metro-East (0.63%) | Metro-East (0.62%) | 4 | ↔(+0) |
| 5 | Bloomington-Normal (0.48%) | Springfield (0.06%) | 5 | ↑(+2) |
| 6 | Decatur (-0.21%) | Rockford (-0.15%) | 6 | ↓(-3) |
| 7 | Springfield (-0.54%) | Kankakee (-0.7%) | 7 | ↑(+2) |
| 8 | Peoria (-1.46%) | Decatur (-0.73%) | 8 | ↓(-2) |
| 9 | Kankakee (-1.56%) | Peoria (-0.82%) | 9 | ↓(-1) |
| 10 | Davenport-Rock Island-Moline (-2.25%) | Davenport-Rock Island-Moline (-2.25%) | 10 | ↔(+0) |

Talking Points

MSA League Tables

- Decatur (1st to 9th) experienced the deepest fall in September 2015.
- Metro-East (2nd to 4th), Bloomington-Normal (4th to 5th), Springfield (5th to 8th) and Rockford (3rd to 10th) also dropped in terms of rank from last month.
- The most remarkable upward move in September was recorded for Kankakee (10th to 1st).
- In the 12-month growth league table, upward moves were recorded for Bloomington-Normal (5th to 3rd), Springfield (7th to 5th) and Kankakee (9th to 7th).
- Downward move was recorded for Rockford (3rd to 6th), Decatur (6th to 8th) and Peoria (8th to 9th).
- In the 12 months growth league table, Davenport-Rock Island-Moline remained in the last place while Champaign-Urbana-Rantoul remained in the first place.

*MSA League Tables are based on revised employment data. For instances of equal growth rate for multiple MSAs ranks are decided based on change of growth rate from previous month.

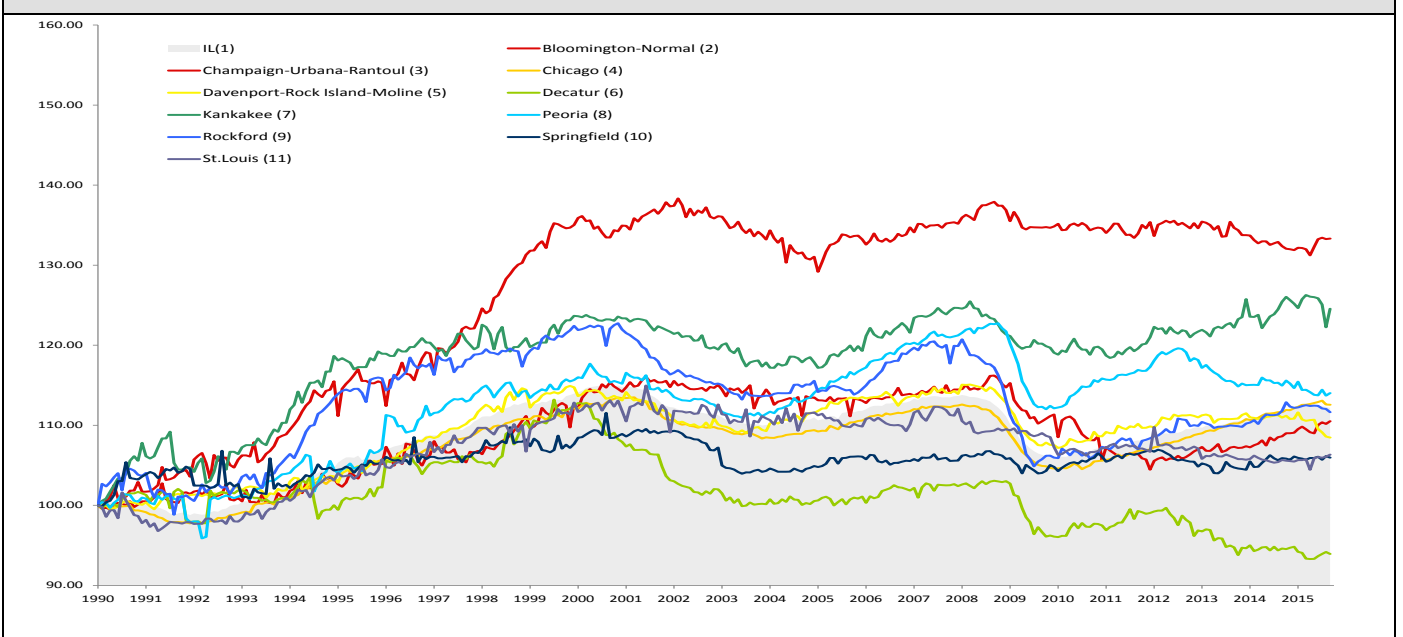
**Changes indicate change in rank position compared to previous month and correspond to the MSA at the right column. Rise is indicated by a '↑' and decline by a '↓' and for an unchanged position a '↔' is used. Figures in parenthesis indicate relative rank change from previous month

September 2015 MSA Employment by Sectors (000s) *

| Market Area | Construction (CON) | Manufacturing (MAN) | Trade, transportation & utilities (TTU) | Information (INF) | Financial activities (FIN) | Professional & business services (PRO) | Education & health (EDU) | Leisure & hospitality (LEI) | Other Services (OTH) | Government (GOV) |
|------------------------------|--------------------|---------------------|---|-------------------|----------------------------|--|--------------------------|-----------------------------|----------------------|-------------------|
| Bloomington-Normal | 2.3 (2.4%) | 4.71 (5%) | 16.03 (16.9%) | 0.71 (0.7%) | 12.02 (12.6%) | 17.75 (18.7%) | 10.79 (11.4%) | 11.24 (11.8%) | 3.78 (4%) | 15.71 (16.5%) |
| Champaign-Urbana | 3.15 (2.9%) | 7.9 (7.3%) | 16.86 (15.5%) | 2.41 (2.2%) | 4.32 (4%) | 8.35 (7.7%) | 14.88 (13.7%) | 11.67 (10.7%) | 3.37 (3.1%) | 35.94 (33%) |
| Chicago | 133.65 (3.3%) | 334.67 (8.3%) | 812.97 (20.2%) | 74.66 (1.9%) | 268.38 (6.7%) | 751.53 (18.7%) | 614.31 (15.3%) | 381.81 (9.5%) | 171.61 (4.3%) | 474.48 (11.8%) |
| Davenport-Rock Island-Moline | 8.8 (4.9%) | 23.79 (13.3%) | 39.8 (22.2%) | 2.28 (1.3%) | 7.89 (4.4%) | 21.74 (12.1%) | 24.55 (13.7%) | 17.46 (9.7%) | 7.25 (4%) | 25.64 (14.3%) |
| Decatur | 3.32 (6.6%) | 10.1 (20%) | 10.49 (20.8%) | 0.6 (1.2%) | 1.89 (3.7%) | 3.28 (6.5%) | 8.2 (16.2%) | 4.89 (9.7%) | 2.19 (4.3%) | 5.39 (10.7%) |
| Kankakee | 1.17 (2.6%) | 5.8 (13%) | 10.49 (23.5%) | 0.39 (0.9%) | 1.87 (4.2%) | 3.77 (8.4%) | 8.54 (19.1%) | 4.1 (9.2%) | 1.7 (3.8%) | 6.91 (15.5%) |
| Peoria | 7.63 (4.3%) | 25.7 (14.5%) | 31.97 (18.1%) | 2.21 (1.3%) | 7.58 (4.3%) | 19.18 (10.8%) | 33.68 (19%) | 19.81 (11.2%) | 7.78 (4.4%) | 21.11 (11.9%) |
| Rockford | 4.43 (2.9%) | 31.9 (21.2%) | 28.97 (19.2%) | 1.41 (0.9%) | 5.57 (3.7%) | 16.22 (10.8%) | 23.5 (15.6%) | 13.37 (8.9%) | 8.72 (5.8%) | 16.52 (11%) |
| Springfield | 4.47 (4%) | 2.87 (2.6%) | 17.73 (15.8%) | 1.59 (1.4%) | 6.96 (6.2%) | 10.49 (9.4%) | 20.75 (18.5%) | 11.05 (9.9%) | 6.52 (5.8%) | 29.6 (26.4%) |
| IL | 209.3 (3.5%) | 570.32 (9.7%) | 1179.63 (20%) | 98.12 (1.7%) | 368.11 (6.2%) | 936.15 (15.8%) | 895.49 (15.2%) | 561.94 (9.5%) | 250.41 (4.2%) | 828.02 (14%) |

* The Illinois Department of Employment Security does not collect sector employment data for Metro-East

Total non-farm Employment growth rate Jan 1990 – September 2015



MSA DESCRIPTION: **Bloomington-Normal (B-N):** McLean Co. **Champaign-Urbana (C-U-R):** Champaign Co., Ford Co. & Piatt Co. **Chicago:** Cook Co. IL, DeKalb Co. IL, DuPage Co. IL, Grundy Co. IL, Kane Co. IL, Kendall Co. IL, Lake Co. IL, McHenry Co. IL, Will Co. IL & Kenosha Co. WI **Davenport-Moline-Rock Island (D-R-M):** Henry Co. IL, Mercer Co. IL, Rock Island Co. IL & Scott Co. IA **Decatur:** Macon Co. **Kankakee:** Kankakee Co. **Metro-East:** Bond Co., Calhoun Co., Clinton Co., Jersey Co., Macoupin Co., Madison Co., Monroe Co. & St. Clair Co. **Peoria-Pekin (Peoria):** Marshall Co., Peoria Co., Stark Co., Tazewell Co. & Woodford Co. **Rockford:** Boone Co. & Winnebago Co. **Springfield:** Menard Co. & Sangamon Co. The MSA data (unless noted) were seasonally adjusted to be consistent with state totals.

Employment Forecast for MSAs

| MSAs | September 2015* | September 2016 (p)* | Number of Jobs * | Growth Rate % | Growth | Sector with Highest Growth Rate (p) | Sector with Lowest Growth Rate (p) |
|------------------------------|-----------------|---------------------|------------------|----------------|--------|-------------------------------------|------------------------------------|
| Bloomington-Normal | 95,100 | 95,200 | 200 ~ 500 | 0.20%~ 0.57% | + | PRO (2.23%) | INF (-14.29%) |
| Champaign-Urbana-Rantoul | 109,000 | 109,300 | 400~700 | 0.35%~0.61% | + | EDU (3.46%) | MAN (-2.01%) |
| Chicago | 4,019,600 | 4,080,400 | 60,900~65,300 | 1.51%~1.62% | + | PRO (3.92%) | MAN (-0.73%) |
| Davenport-Rock Island-Moline | 179,500 | 177,200 | -2,300~ -2,200 | -1.27%~ -1.22% | - | MAN (-0.76%) | INF (-4.71%) |
| Decatur | 50,500 | 50,200 | -300~-100 | -0.62%~-0.22% | - | LEI (1.29%) | INF (-5.10%) |
| Kankakee | 44,700 | 44,200 | -500~-200 | -1.15%~ -0.48% | - | INF (2.69%) | LEI (-2.00%) |
| Peoria | 176,900 | 177,700 | 800~830 | 0.46%~ 0.47% | + | PRO (2.59%) | CON (-0.73%) |
| Rockford | 150,500 | 149,300 | -1,200~-700 | -0.78%~-0.47% | - | EDU (1.58%) | CON (-6.83%) |
| Springfield | 112,000 | 112,000 | -20~100 | -0.01%~ 0.07% | + | INF (3.46%) | CON (-5.97%) |

*Total Non-Farm Jobs

