

ILLINOIS

MSA Indices & Forecast

R | E | A | L

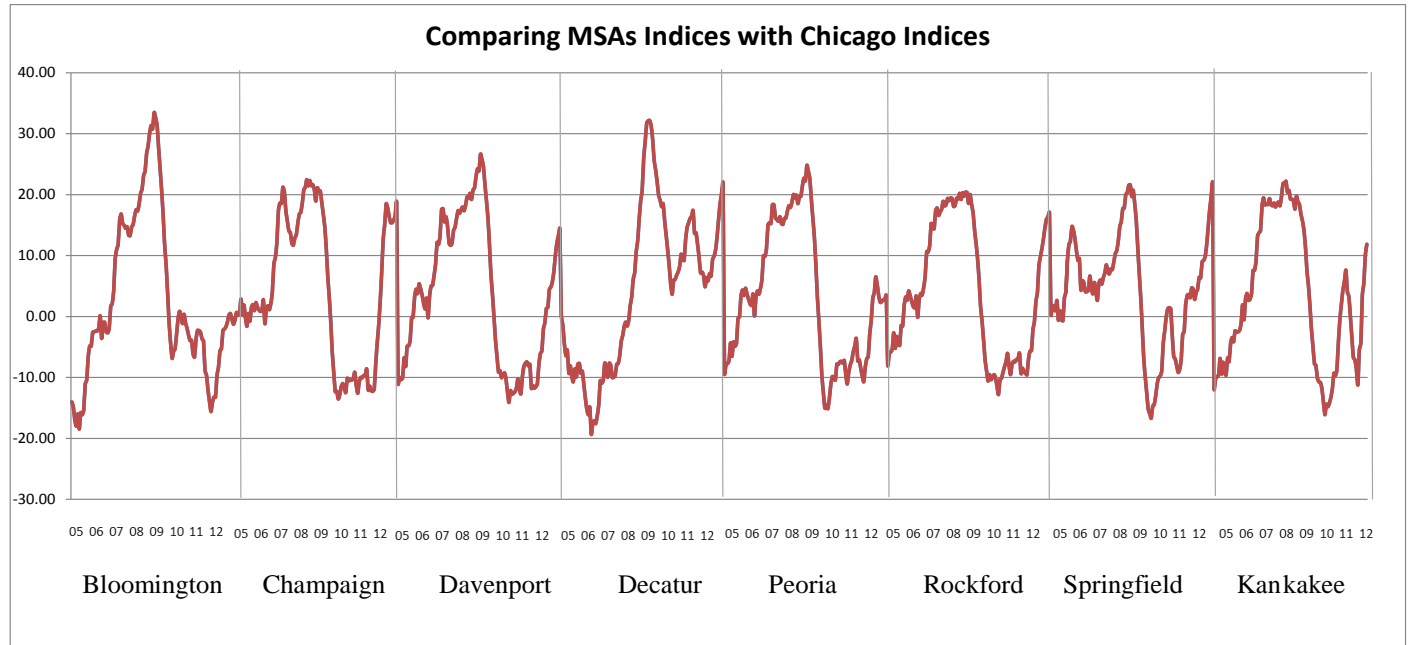
Release
07/15/2012

data
May 2004 / May 2012

Issue
2012.06

www.real.illinois.edu

Note: Values shown on the "1 Year" forecast represent a pessimistic – optimistic scenario. For estimated values please see Appendix.

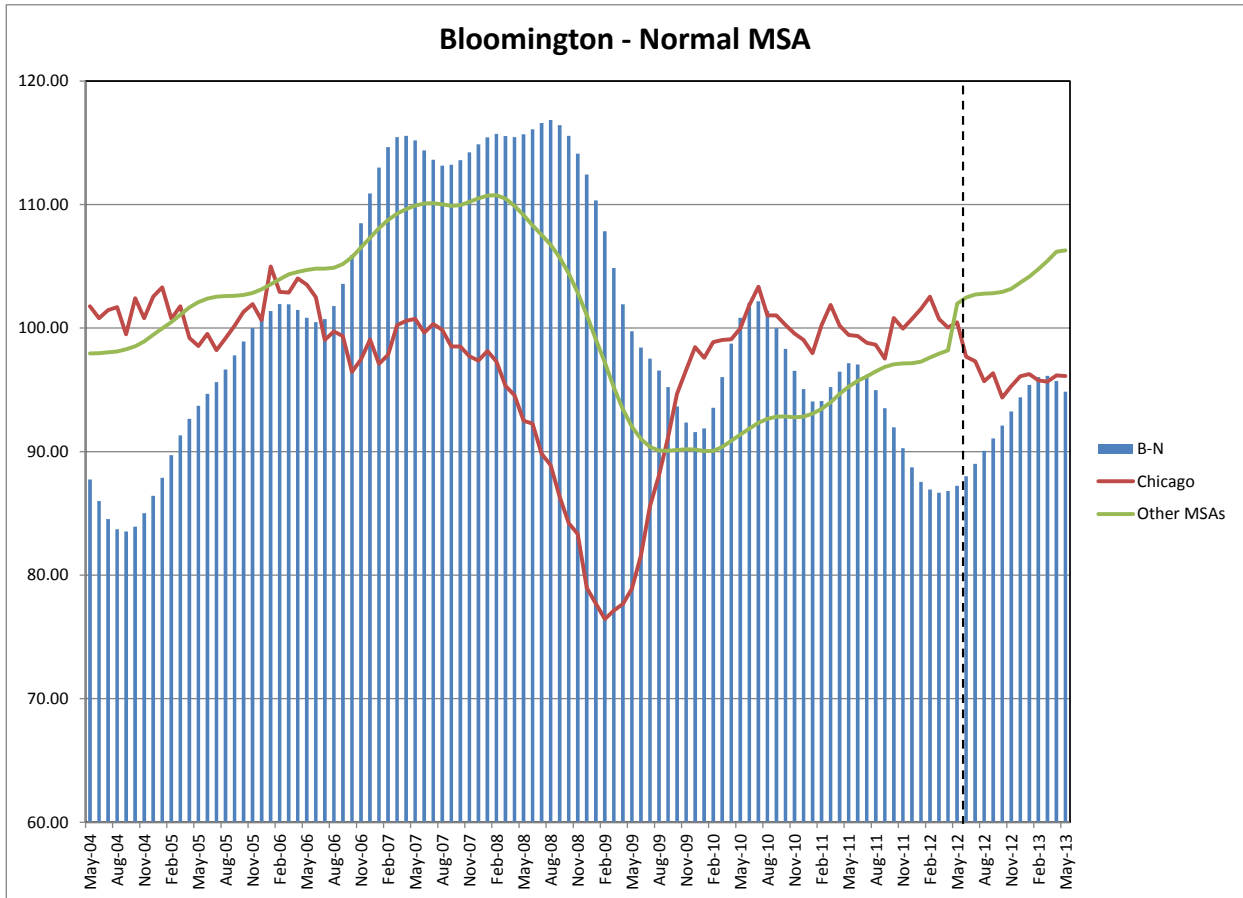


*When figures dropping zero represents that MSAs are doing worse than Chicago; when figures rising above zero represents that MSAs are doing better than Chicago.

- Before Jan 2008, MSA Decatur performed worse than Chicago. However, after Jan 2008, it started performing better than Chicago.
- From the beginning of 2007 to 2009, MSA Bloomington, Champaign-Urbana-Rantoul, Davenport, Peoria, Rockford, Springfield and Kankakee-Bradley performed better than Chicago.
- However, from Mid-2009 to late-2011, these MSAs performed worse than Chicago.
- According to the forecast for May 2013, MSA Champaign-Urbana-Rantoul, Davenport-Rock Island-Moline, Decatur, Peoria, Rockford, Springfield and Kankakee will do better than Chicago by May 2013. MSA Bloomington might perform worse than Chicago.

❖ **Bloomington-Normal (Reference Month – May 2012)**

Current	87.23		
	1 Month	3 Month	1 Year
Historical	86.80	86.93	97.15
Forecast	88.01	90.06	90.11 ~ 100.56

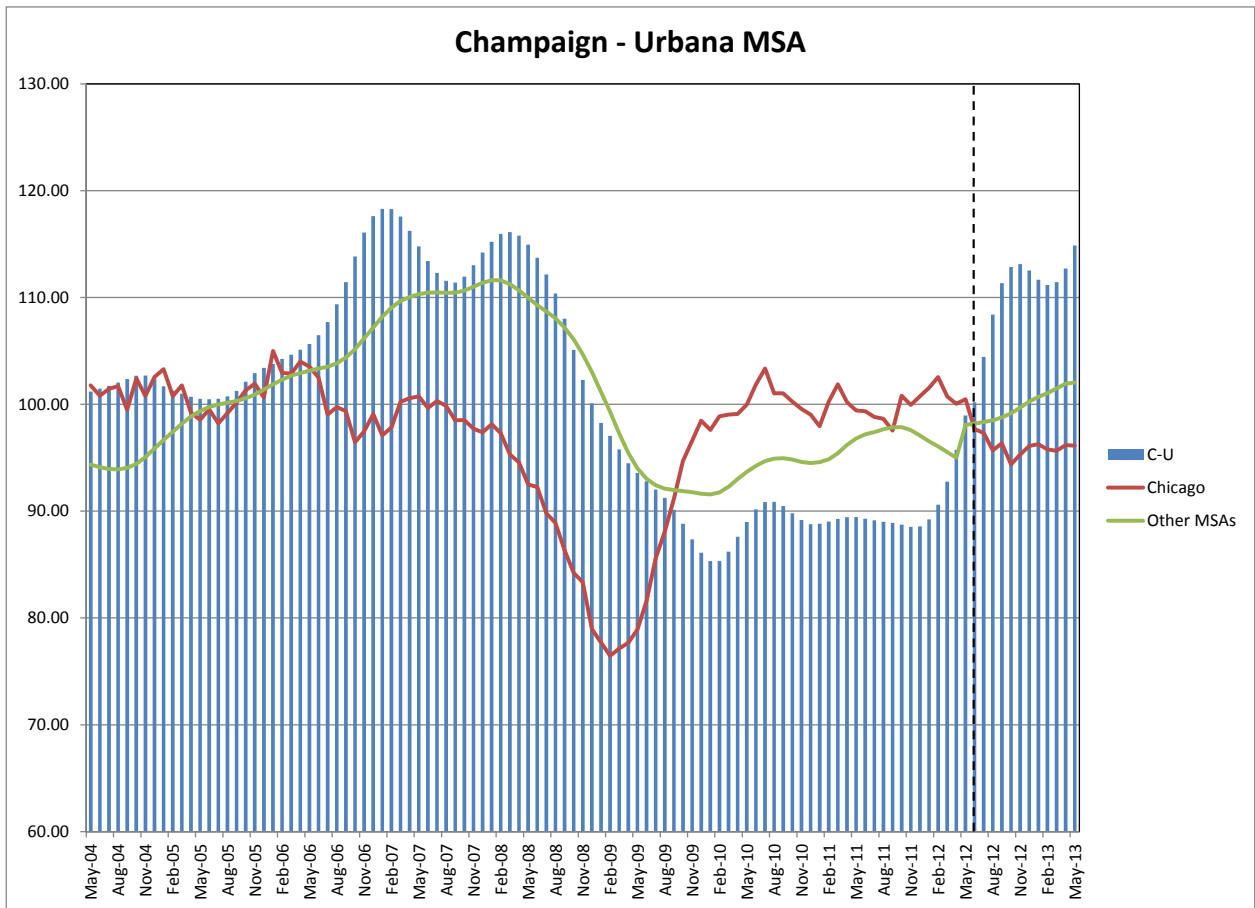


Bloomington-Normal MSA League: Non-Farm Employment Growth Rate:

- Bloomington-Normal in May gained by moving up 5 positions reaching the 1st place of the rank.
- In the 12 month growth league table Bloomington-Normal moving up 2 positions reaching the 6th place of the rank.

❖ **Champaign-Urbana (Reference Month – May 2012)**

Current	98.96		
	1 Month	3 Month	1 Year
Historical	95.73	90.61	89.44
Forecast	100.19	108.39	102.04 ~ 115.72

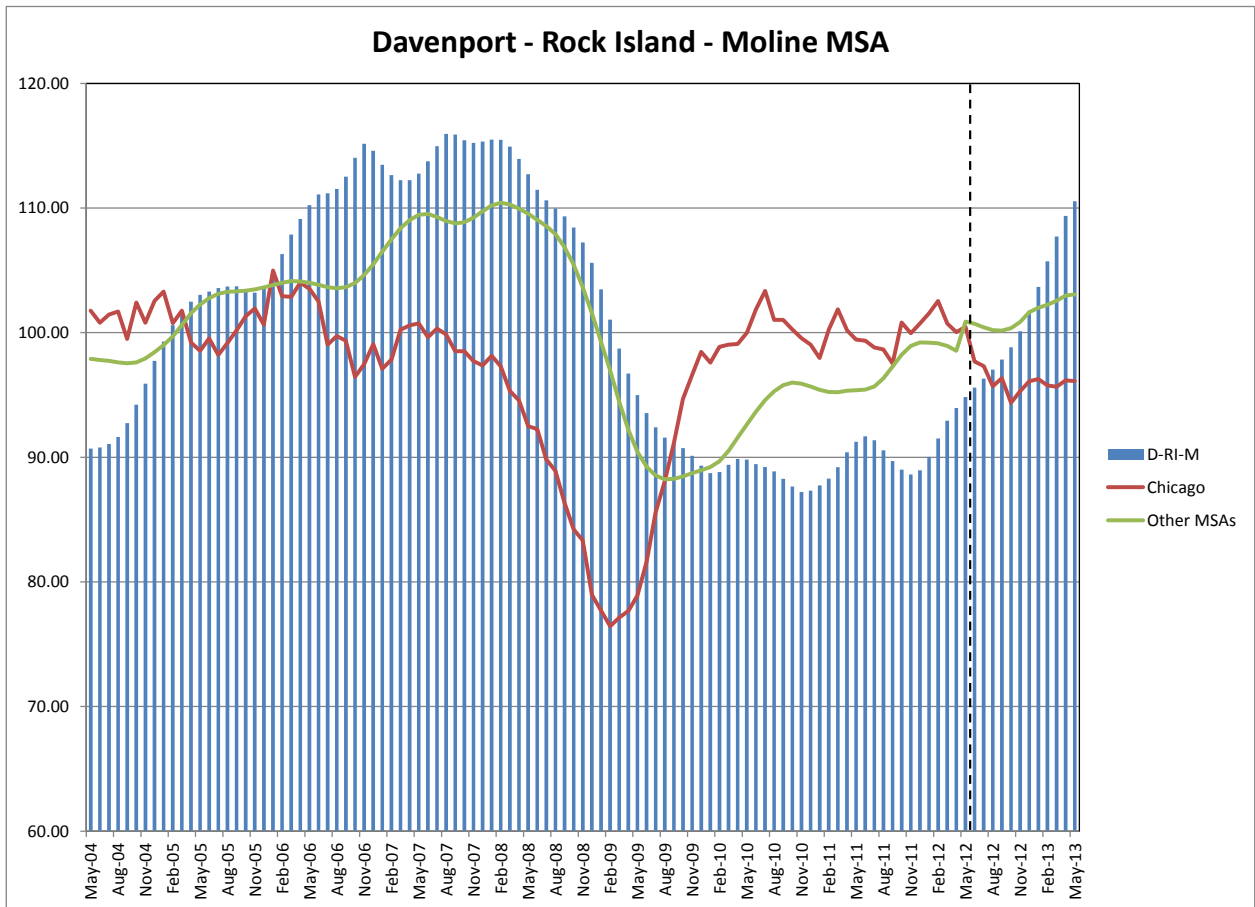


Champaign- Urbana MSA League: Non-Farm Employment Growth Rate:

- Champaign-Urbana-Rantoul gained in May by moving up 1 position reaching the 3rd place in the rank.
- In the 12 months growth league table, Champaign-Urbana-Rantoul remained in the 9th place of the rank.

❖ **Davenport-Rock Island-Moline (Reference Month – May 2012)**

Current	94.83		
	1 Month	3 Month	1 Year
Historical	93.95	91.51	91.24
Forecast	95.60	97.04	100.20 ~ 113.73

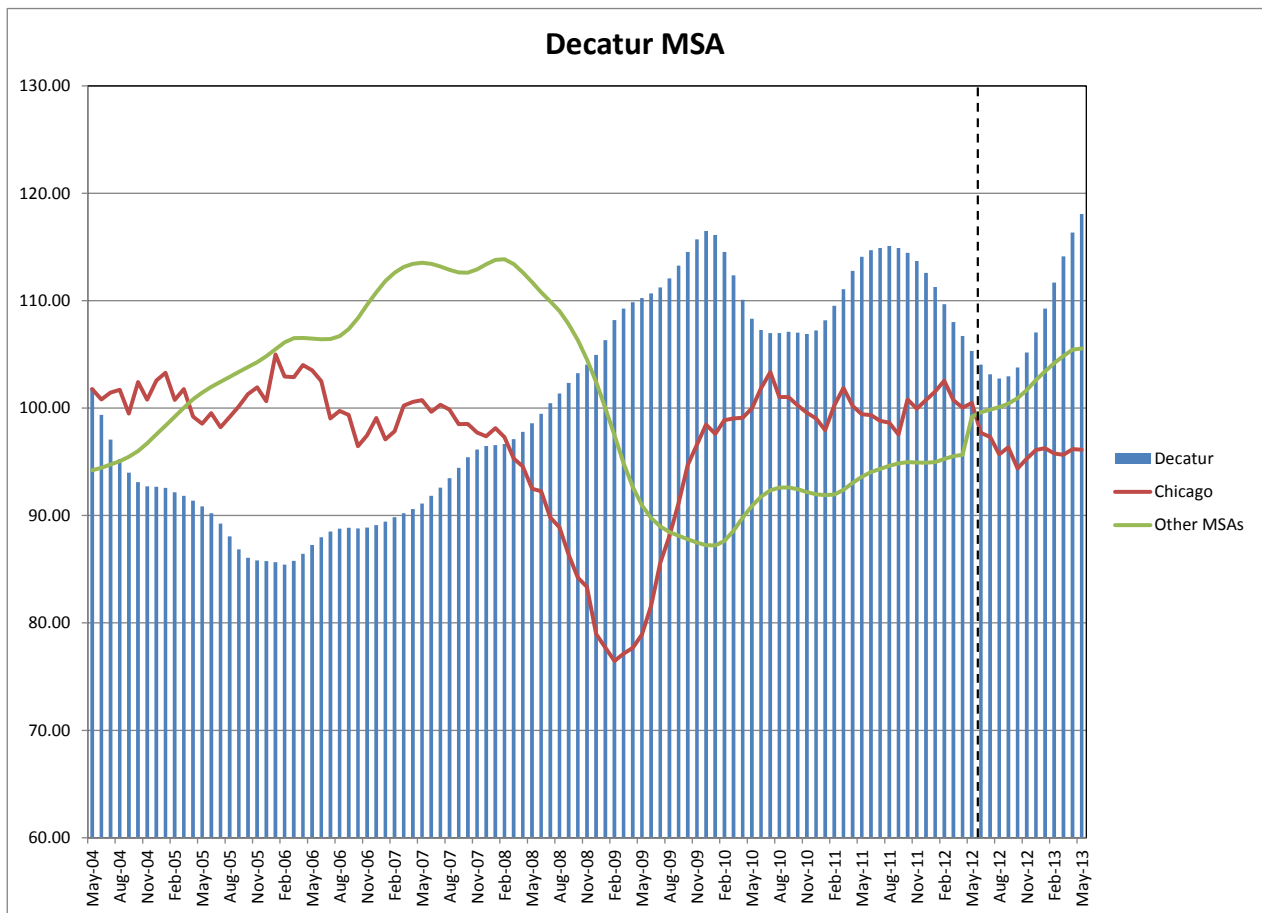


Davenport – Rock Island–Moline MSA League: Non-Farm Employment Growth Rate:

- Davenport-Rock Island-Moline in May gained 4 positions reaching the 6th place in the rank.
- In the 12 months growth league table, Davenport – Rock Island – Moline remained in the last place in the rank.

❖ **Decatur (Reference Month – May 2012)**

Current	105.33		
	1 Month	3 Month	1 Year
Historical	106.72	109.68	114.08
Forecast	104.06	102.75	106.18 ~ 120.04

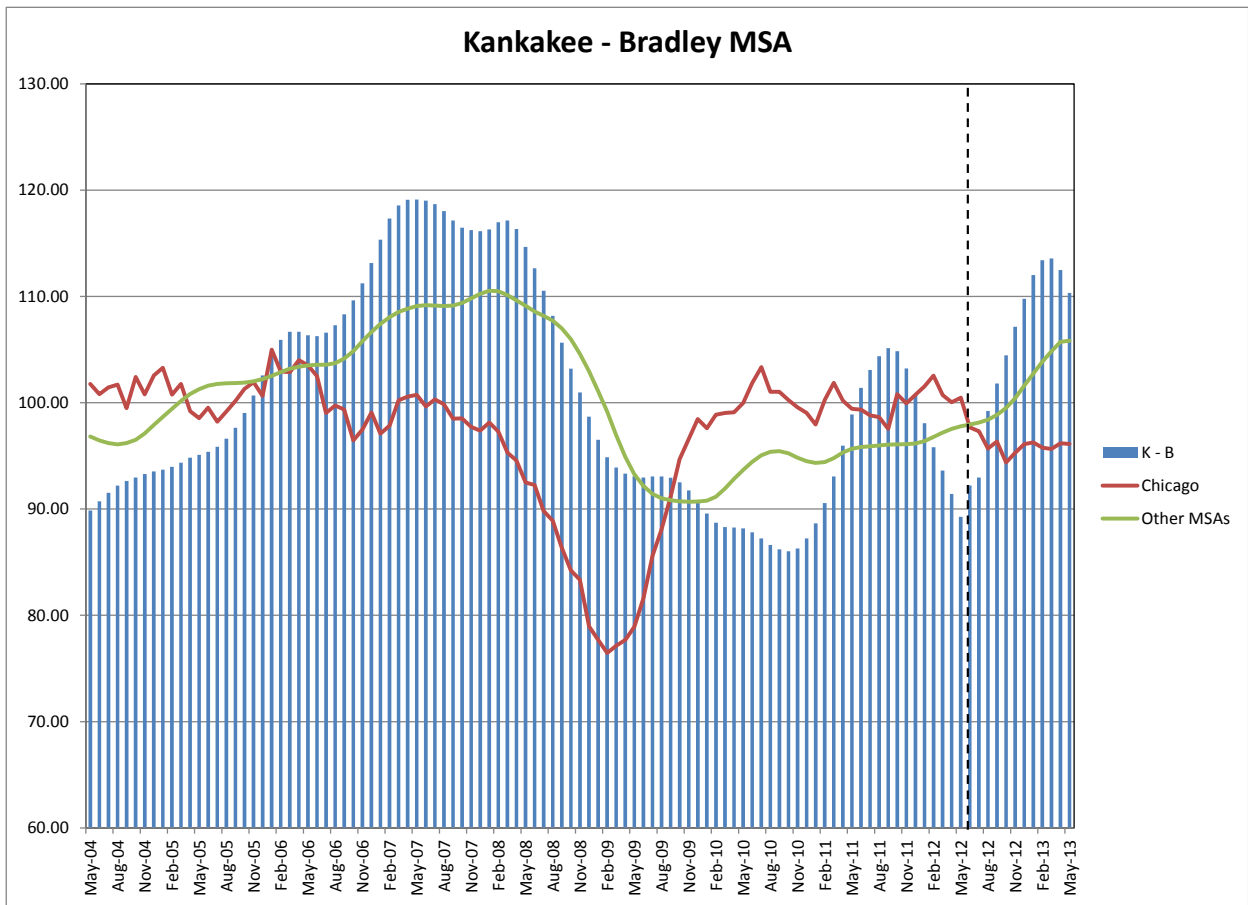


Decatur MSA League: Non-Farm Employment Growth Rate

- Decatur in May dropped 1 position to the last place in the rank.
- In the 12 months growth league table, Decatur moving down 2 position to the 7th place in the rank.

❖ **Kankakee - Bradley (Reference Month – May 2012)**

Current	89.26		
	1 Month	3 Month	1 Year
Historical	91.43	98.06	98.90
Forecast	92.23	99.22	100.45 ~ 113.78

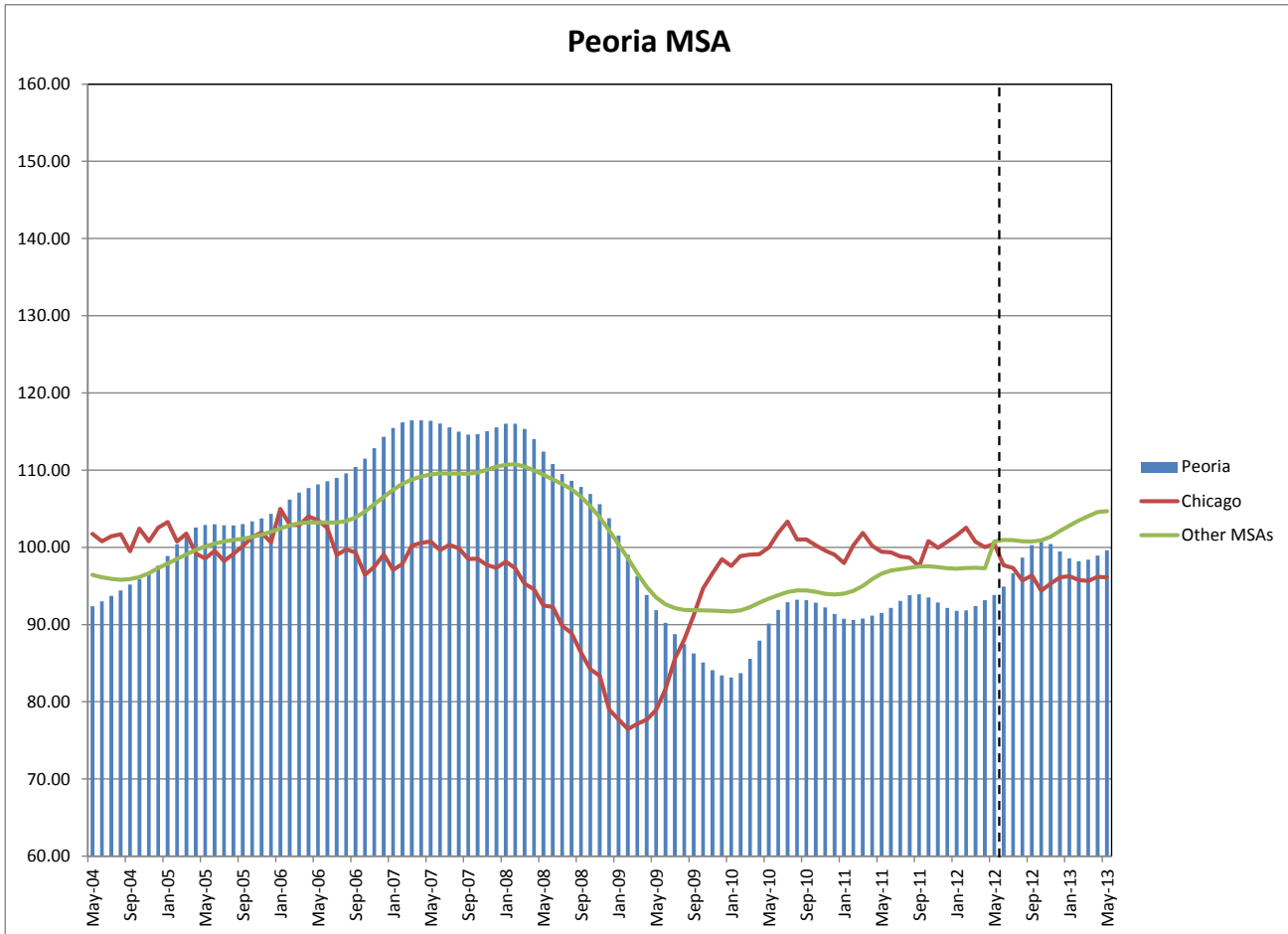


Kankakee - Bradley MSA League: Non-Farm Employment Growth Rate

- Kankakee – Bradley gained 3 positions reaching the 5th place in the rank.
- In the 12 months growth league table, Kankakee– Bradley remained in the 2nd position of the rank.

❖ **Peoria (Reference Month – May 2012)**

Current	93.84		
	1 Month	3 Month	1 Year
Historical	93.14	91.83	91.51
Forecast	94.92	98.66	93.18 ~ 102.83

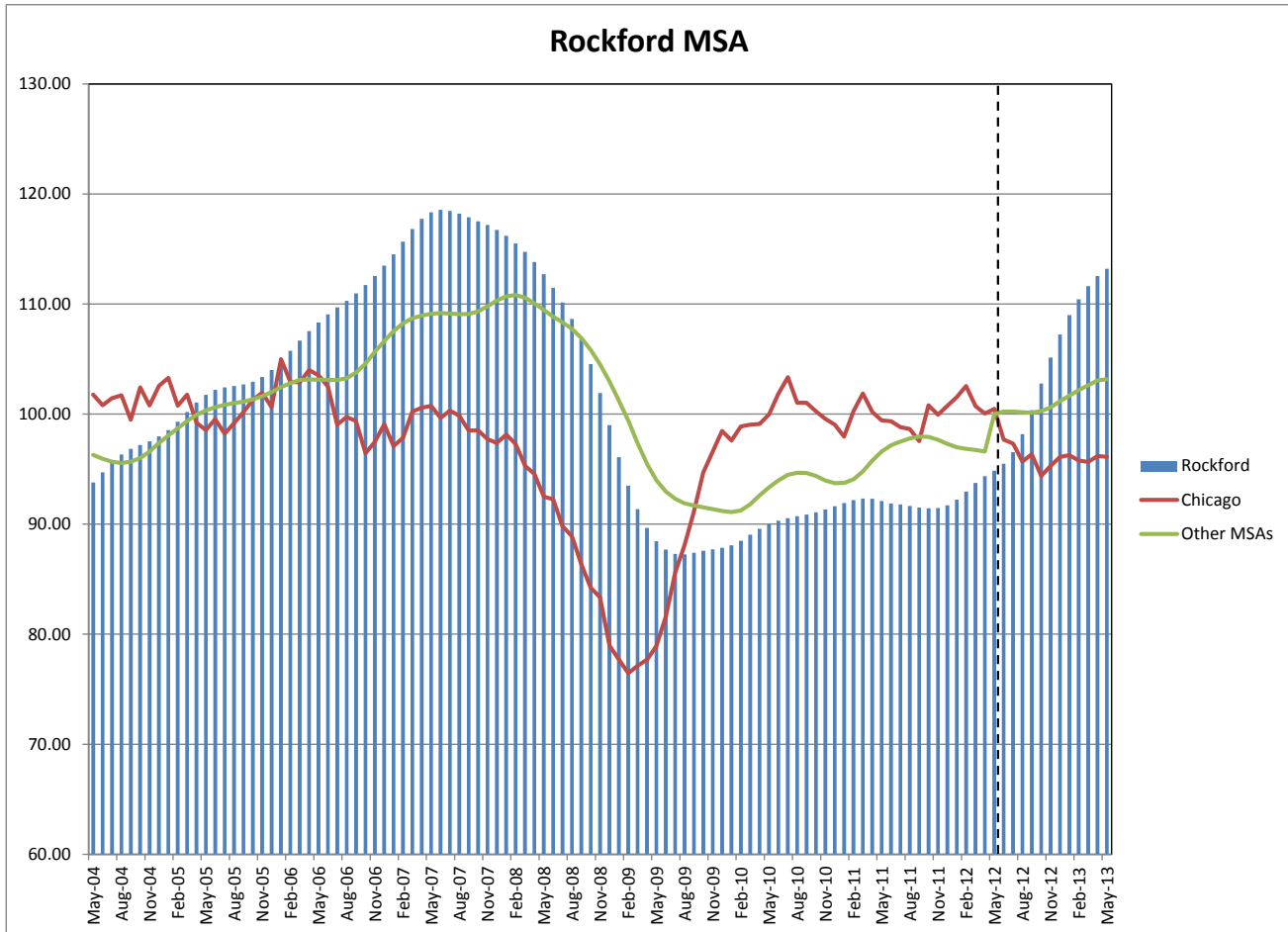


Peoria MSA League: Non-Farm Employment Growth Rate

- Peoria in May moved down 3 positions reaching the 4th place in the rank.
- In the 12 months growth league table, Peoria remained in the 1st place in the rank.

❖ **Rockford (Reference Month – May 2012)**

Current	94.85		
	1 Month	3 Month	1 Year
Historical	94.35	92.97	92.10
Forecast	95.48	98.18	105.25 ~ 115.76

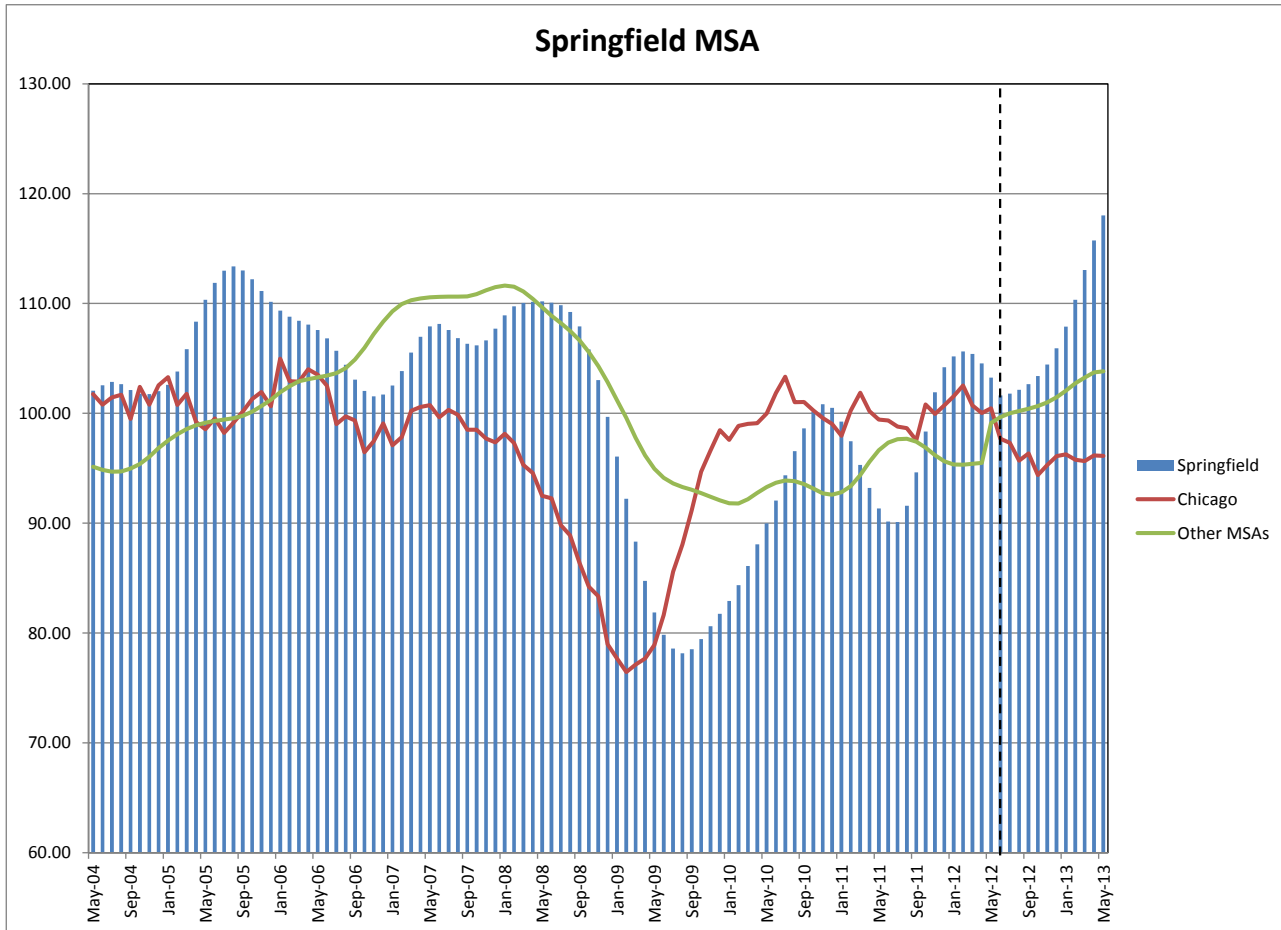


Rockford MSA League: Non-Farm Employment Growth Rate

- Rockford gained in May by moving up 1 position, reaching the 2nd place of the rank.
- In the 12 months growth league table, Rockford remained in the 3rd place in the rank.

❖ **Springfield (Reference Month – May 2012)**

Current	103.24		
	1 Month	3 Month	1 Year
Historical	104.55	105.64	91.34
Forecast	101.63	102.14	107.90 ~ 120.82



Springfield MSA League: Non-Farm Employment Growth Rate

- Springfield dropped 1 position in the rank of May to the 8th place.
- In the 12 months growth league table Springfield moving down 1 position reaching to the 8th place in the rank.

Notes:

- MSA Indices series are available in the appendix.

Appendix

month	B - N	C - U	D-RI-M	Decatur	Peoria	Rockford	Springfield	K-B
May-04	87.75	101.18	90.69	101.90	92.37	93.78	102.05	89.86
Jun-04	86.01	101.47	90.79	99.37	93.01	94.70	102.56	90.73
Jul-04	84.55	101.73	91.07	97.07	93.71	95.60	102.87	91.52
Aug-04	83.72	102.03	91.63	95.24	94.43	96.33	102.66	92.20
Sep-04	83.53	102.36	92.74	93.98	95.17	96.83	102.12	92.64
Oct-04	83.93	102.67	94.21	93.09	95.87	97.19	101.80	92.96
Nov-04	85.01	102.69	95.91	92.71	96.61	97.52	101.75	93.29
Dec-04	86.42	102.38	97.74	92.68	97.65	97.97	102.01	93.53
Jan-05	87.88	101.68	99.28	92.57	98.88	98.54	102.59	93.69
Feb-05	89.70	101.27	100.61	92.16	100.42	99.31	103.82	93.97
Mar-05	91.32	100.99	101.63	91.83	101.73	100.18	105.84	94.35
Apr-05	92.65	100.70	102.49	91.38	102.57	101.05	108.35	94.83
May-05	93.71	100.51	103.02	90.85	102.90	101.75	110.34	95.10
Jun-05	94.67	100.48	103.29	90.21	102.97	102.20	111.88	95.39
Jul-05	95.62	100.51	103.58	89.25	102.87	102.43	112.98	95.86
Aug-05	96.64	100.73	103.70	88.05	102.83	102.55	113.38	96.61
Sep-05	97.79	101.25	103.72	86.85	103.02	102.69	113.01	97.65
Oct-05	98.91	102.11	103.45	86.06	103.36	102.95	112.20	99.04
Nov-05	100.00	102.91	103.21	85.82	103.76	103.37	111.14	100.69
Dec-05	100.76	103.40	103.66	85.75	104.33	104.01	110.16	102.56
Jan-06	101.37	103.78	104.75	85.65	105.07	104.83	109.35	104.43
Feb-06	101.94	104.24	106.31	85.43	106.19	105.75	108.80	105.91
Mar-06	101.93	104.64	107.87	85.78	107.09	106.67	108.44	106.68
Apr-06	101.47	105.12	109.11	86.43	107.67	107.53	108.07	106.67
May-06	100.83	105.65	110.23	87.26	108.14	108.32	107.59	106.35
Jun-06	100.48	106.46	111.09	87.98	108.57	109.05	106.83	106.26
Jul-06	100.72	107.70	111.18	88.50	109.01	109.69	105.70	106.58
Aug-06	101.79	109.36	111.54	88.77	109.58	110.29	104.43	107.30
Sep-06	103.59	111.45	112.51	88.85	110.41	110.96	103.08	108.32
Oct-06	105.92	113.84	114.03	88.80	111.48	111.72	102.04	109.64
Nov-06	108.49	116.08	115.16	88.87	112.84	112.55	101.56	111.24
Dec-06	110.90	117.61	114.60	89.10	114.32	113.49	101.72	113.14
Jan-07	112.98	118.30	113.46	89.44	115.46	114.51	102.54	115.33
Feb-07	114.65	118.27	112.63	89.84	116.18	115.66	103.84	117.32
Mar-07	115.45	117.58	112.23	90.21	116.46	116.81	105.54	118.55
Apr-07	115.56	116.24	112.24	90.60	116.44	117.73	106.97	119.09
May-07	115.19	114.78	112.75	91.11	116.38	118.33	107.91	119.12
Jun-07	114.37	113.42	113.75	91.82	116.04	118.55	108.13	119.01
Jul-07	113.63	112.30	114.97	92.60	115.55	118.47	107.58	118.67
Aug-07	113.14	111.55	115.94	93.48	114.98	118.20	106.85	118.03
Sep-07	113.22	111.39	115.89	94.43	114.60	117.88	106.33	117.14
Oct-07	113.58	111.95	115.43	95.42	114.66	117.51	106.19	116.47
Nov-07	114.22	113.02	115.22	96.15	115.04	117.18	106.64	116.24
Dec-07	114.88	114.20	115.34	96.46	115.55	116.73	107.70	116.15
Jan-08	115.45	115.22	115.49	96.55	116.02	116.19	108.92	116.30
Feb-08	115.72	115.95	115.47	96.65	116.02	115.50	109.73	116.99

Mar-08	115.55	116.11	114.92	97.10	115.34	114.73	110.05	117.15
Apr-08	115.45	115.79	113.94	97.78	114.03	113.82	110.15	116.34
May-08	115.68	114.95	112.71	98.59	112.41	112.70	110.20	114.67
Jun-08	116.09	113.71	111.46	99.48	110.78	111.47	110.07	112.65
Jul-08	116.61	112.16	110.62	100.45	109.50	110.14	109.84	110.52
Aug-08	116.84	110.36	109.96	101.36	108.61	108.64	109.23	108.16
Sep-08	116.43	108.01	109.34	102.33	107.83	106.79	107.92	105.64
Oct-08	115.56	105.08	108.44	103.25	106.92	104.54	105.82	103.21
Nov-08	114.11	102.28	107.24	104.04	105.59	101.90	103.02	100.97
Dec-08	112.43	100.08	105.60	104.95	103.78	99.00	99.68	98.69
Jan-09	110.33	98.26	103.47	106.33	101.51	96.08	96.07	96.51
Feb-09	107.83	97.04	101.04	108.18	99.05	93.49	92.23	94.87
Mar-09	104.86	95.76	98.72	109.26	96.27	91.36	88.33	93.90
Apr-09	101.93	94.47	96.71	109.85	93.84	89.67	84.74	93.34
May-09	99.74	93.58	94.99	110.24	91.87	88.45	81.87	93.08
Jun-09	98.42	92.79	93.54	110.67	90.23	87.68	79.83	92.96
Jul-09	97.52	92.02	92.40	111.22	88.76	87.30	78.58	93.06
Aug-09	96.55	91.23	91.57	112.08	87.47	87.25	78.15	93.06
Sep-09	95.22	90.13	91.15	113.27	86.27	87.39	78.53	92.95
Oct-09	93.65	88.81	90.74	114.53	85.08	87.58	79.46	92.51
Nov-09	92.35	87.36	90.12	115.71	84.10	87.71	80.63	91.75
Dec-09	91.58	86.11	89.33	116.48	83.42	87.85	81.76	90.67
Jan-10	91.88	85.33	88.73	116.11	83.14	88.07	82.92	89.57
Feb-10	93.55	85.32	88.82	114.54	83.71	88.49	84.36	88.71
Mar-10	96.04	86.20	89.40	112.36	85.55	89.03	86.11	88.30
Apr-10	98.74	87.60	89.86	110.08	87.91	89.56	88.07	88.26
May-10	100.83	88.98	89.83	108.32	90.13	89.99	89.99	88.18
Jun-10	102.05	90.16	89.46	107.27	91.89	90.31	92.05	87.80
Jul-10	102.17	90.86	89.22	106.99	92.90	90.53	94.35	87.22
Aug-10	101.40	90.88	88.86	106.99	93.22	90.72	96.55	86.62
Sep-10	99.99	90.48	88.27	107.10	93.16	90.86	98.64	86.21
Oct-10	98.32	89.80	87.65	107.02	92.83	91.07	100.15	86.03
Nov-10	96.55	89.16	87.21	106.89	92.21	91.35	100.82	86.30
Dec-10	95.07	88.76	87.32	107.22	91.37	91.63	100.50	87.23
Jan-11	94.06	88.81	87.74	108.17	90.74	91.91	99.25	88.64
Feb-11	94.10	89.02	88.28	109.53	90.62	92.18	97.46	90.55
Mar-11	95.22	89.27	89.19	111.06	90.79	92.33	95.31	93.06
Apr-11	96.48	89.43	90.40	112.77	91.16	92.31	93.22	95.97
May-11	97.15	89.44	91.24	114.08	91.51	92.10	91.34	98.90
Jun-11	97.04	89.28	91.68	114.70	92.16	91.88	90.16	101.39
Jul-11	96.21	89.14	91.36	114.91	93.06	91.78	90.11	103.08
Aug-11	94.97	89.00	90.55	115.10	93.81	91.64	91.58	104.38
Sep-11	93.52	88.90	89.69	114.90	93.92	91.51	94.62	105.14
Oct-11	91.97	88.73	89.00	114.46	93.51	91.44	98.35	104.85
Nov-11	90.28	88.52	88.62	113.68	92.85	91.46	101.92	103.23
Dec-11	88.72	88.57	88.96	112.58	92.17	91.71	104.21	100.81
Jan-12	87.54	89.23	90.04	111.27	91.78	92.23	105.18	98.06
Feb-12	86.93	90.61	91.51	109.68	91.83	92.97	105.64	95.81
Mar-12	86.67	92.76	92.93	108.01	92.40	93.74	105.41	93.61

Apr-12	86.80	95.73	93.95	106.72	93.14	94.35	104.55	91.43
May-12	87.23	98.96	94.83	105.33	93.84	94.85	103.24	89.26
Jun-12	88.01	100.19	95.60	104.06	94.92	95.48	101.63	92.23
Jul-12	89.02	104.43	96.31	103.14	96.63	96.53	101.80	92.97
Aug-12	90.06	108.39	97.04	102.75	98.66	98.18	102.14	99.22
Sep-12	91.07	111.32	97.84	102.96	100.28	100.34	102.66	101.80
Oct-12	92.11	112.86	98.83	103.78	100.88	102.77	103.40	104.45
Nov-12	93.24	113.11	100.11	105.17	100.44	105.14	104.45	107.15
Dec-12	94.39	112.51	101.74	107.03	99.45	107.23	105.93	109.78
Jan-13	95.39	111.67	103.67	109.26	98.58	108.98	107.90	112.02
Feb-13	96.03	111.16	105.73	111.69	98.21	110.43	110.33	113.40
Mar-13	96.14	111.44	107.71	114.13	98.40	111.61	113.05	113.58
Apr-13	95.71	112.71	109.37	116.33	98.93	112.55	115.74	112.48
May-13	94.85	114.87	110.55	118.06	99.61	113.20	118.03	110.33

Notes

B-N=Bloomington-Normal

C-U=Champaign-Urbana

K-B= Kankakee-Bradley

D-RI-M=Davenport-Rock Island-Moline