

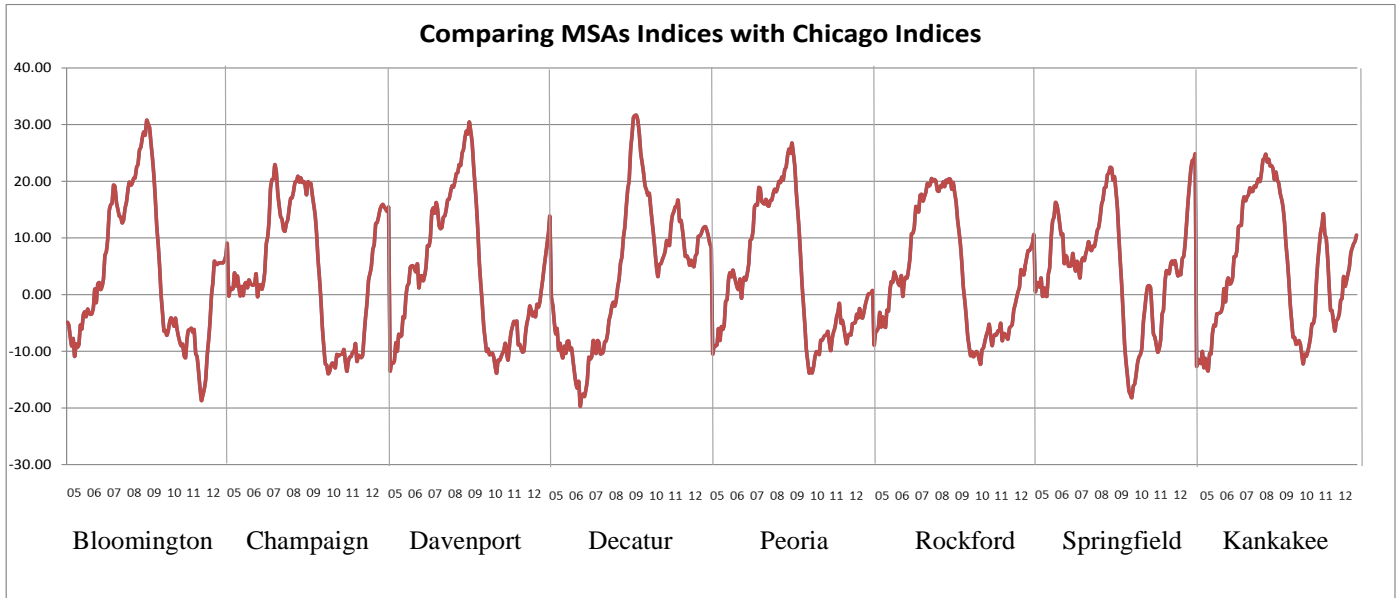
ILLINOIS

MSA Indices & Forecast

R | E | A | L

Release 10/15/2012	data May 2004 / Aug 2012	Issue 2012.10	www.real.illinois.edu
------------------------------	------------------------------------	-------------------------	------------------------------

Note: Values shown on the "1 Year" forecast represent a pessimistic – optimistic scenario. For estimated values please see Appendix.

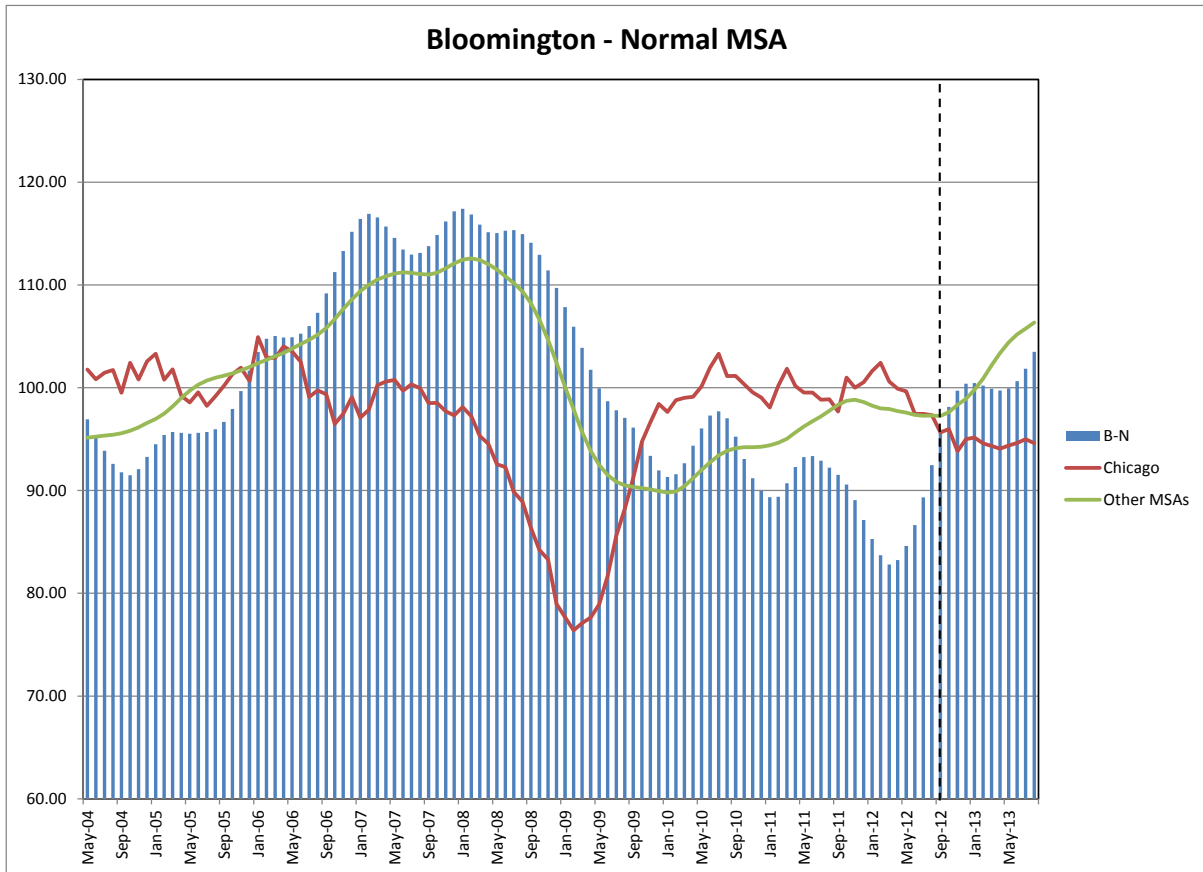


*When figures dropping zero represents that MSAs are doing worse than Chicago; when figures rising above zero represents that MSAs are doing better than Chicago.

- Before Jan 2008, MSA Decatur performed worse than Chicago. However, after Jan 2008, it started performing better than Chicago.
- From early 2007 to early 2009, MSA Bloomington, Champaign-Urbana-Rantoul, Davenport, Peoria, Rockford, Springfield and Kankakee performed better than Chicago.
- However, from Mid-2009 to late-2011, these MSAs performed worse than Chicago.
- According to the forecast for Aug 2013, MSA Bloomington, Champaign-Urbana-Rantoul, Davenport-Rock Island-Moline, Decatur, Rockford, Springfield and Kankakee will do better than Chicago by Aug 2013. MSA Peoria might perform no better than Chicago.

❖ **Bloomington-Normal (Reference Month – Aug 2012)**

Current	92.48		
	1 Month	3 Month	1 Year
Historical	89.33	84.62	92.21
Forecast	95.61	99.71	93.28 ~ 114.81

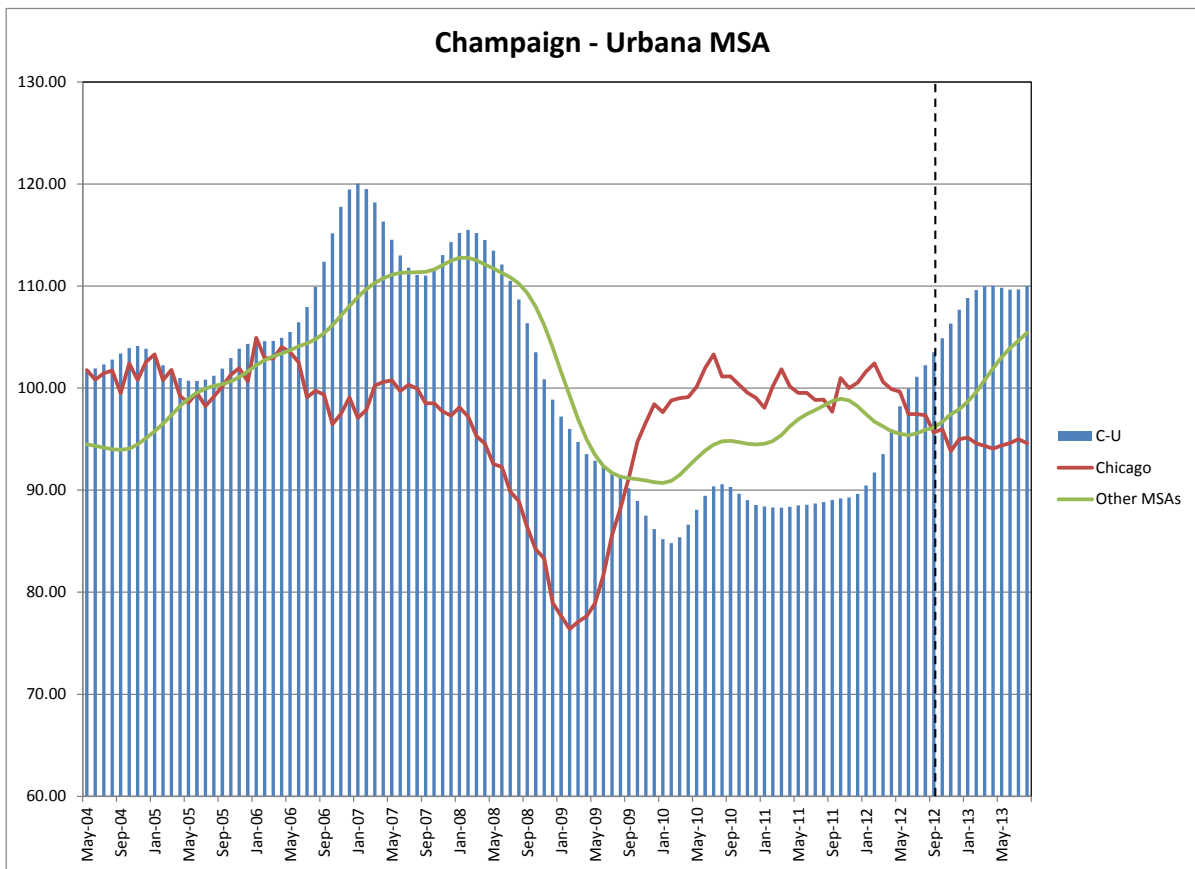


Bloomington-Normal MSA League: Non-Farm Employment Growth Rate:

- Bloomington-Normal in August gained by moving up 3 positions reaching the 3rd place of the rank.
- In the 12 month growth league table Bloomington-Normal moving up 2 positions reaching the 3rd place of the rank.

❖ **Champaign-Urbana (Reference Month – Aug 2012)**

Current	102.25		
	1 Month	3 Month	1 Year
Historical	101.10	98.21	88.83
Forecast	103.51	106.33	101.22 ~ 119.57

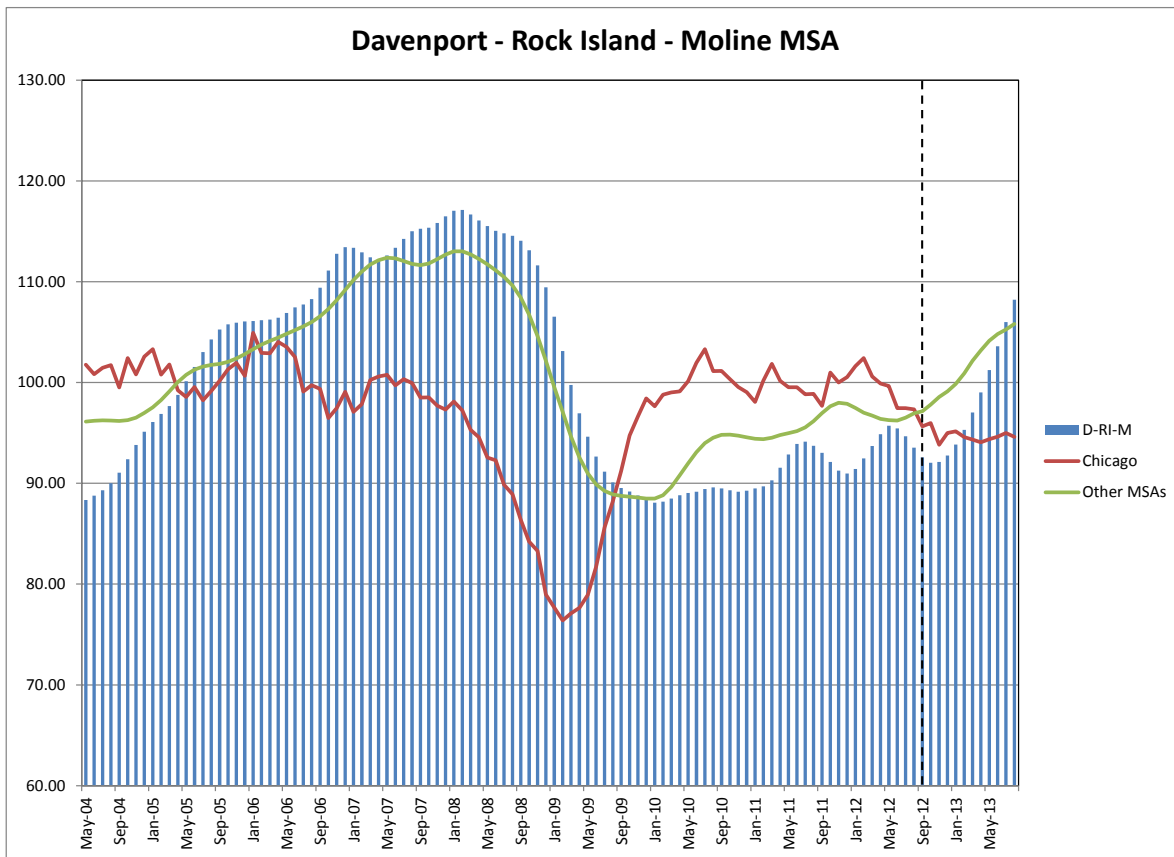


Champaign- Urbana MSA League: Non-Farm Employment Growth Rate:

- Champaign-Urbana-Rantoul lost in August by moving down 6 positions reaching the 8th place in the rank.
- In the 12 months growth league table, Champaign-Urbana-Rantoul moving down 2 positions reaching the 8th place of the rank.

❖ **Davenport-Rock Island-Moline (Reference Month – Aug 2012)**

Current	93.54		
	1 Month	3 Month	1 Year
Historical	94.66	95.70	93.72
Forecast	92.56	92.12	95.41 ~ 118.73

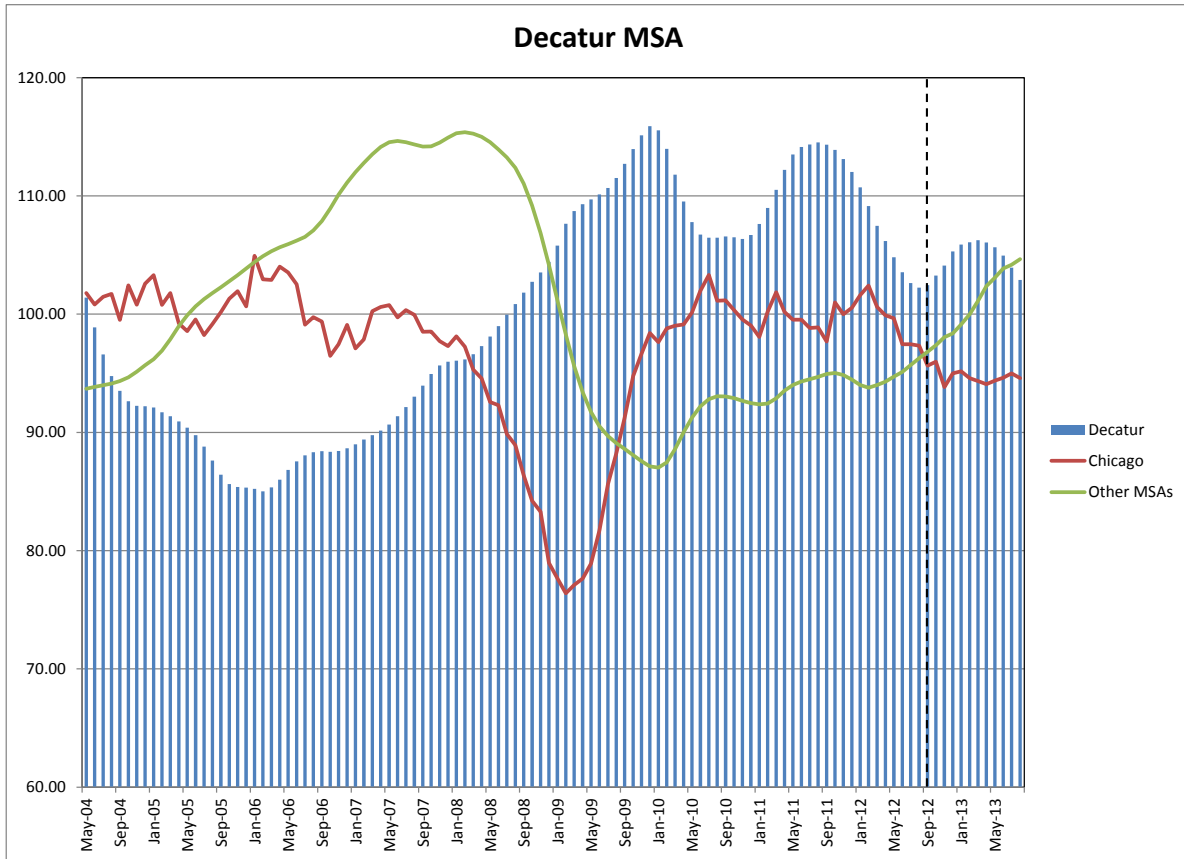


Davenport – Rock Island–Moline MSA League: Non-Farm Employment Growth Rate:

- Davenport-Rock Island-Moline in August moving up 1 position reaching the 7th place in the rank.
- In the 12 months growth league table, Davenport – Rock Island – Moline moved up 3 positions to the 6th place in the rank.

❖ **Decatur (Reference Month – Aug 2012)**

Current	102.23		
	1 Month	3 Month	1 Year
Historical	102.62	104.80	114.52
Forecast	102.44	104.10	97.46 ~ 109.37

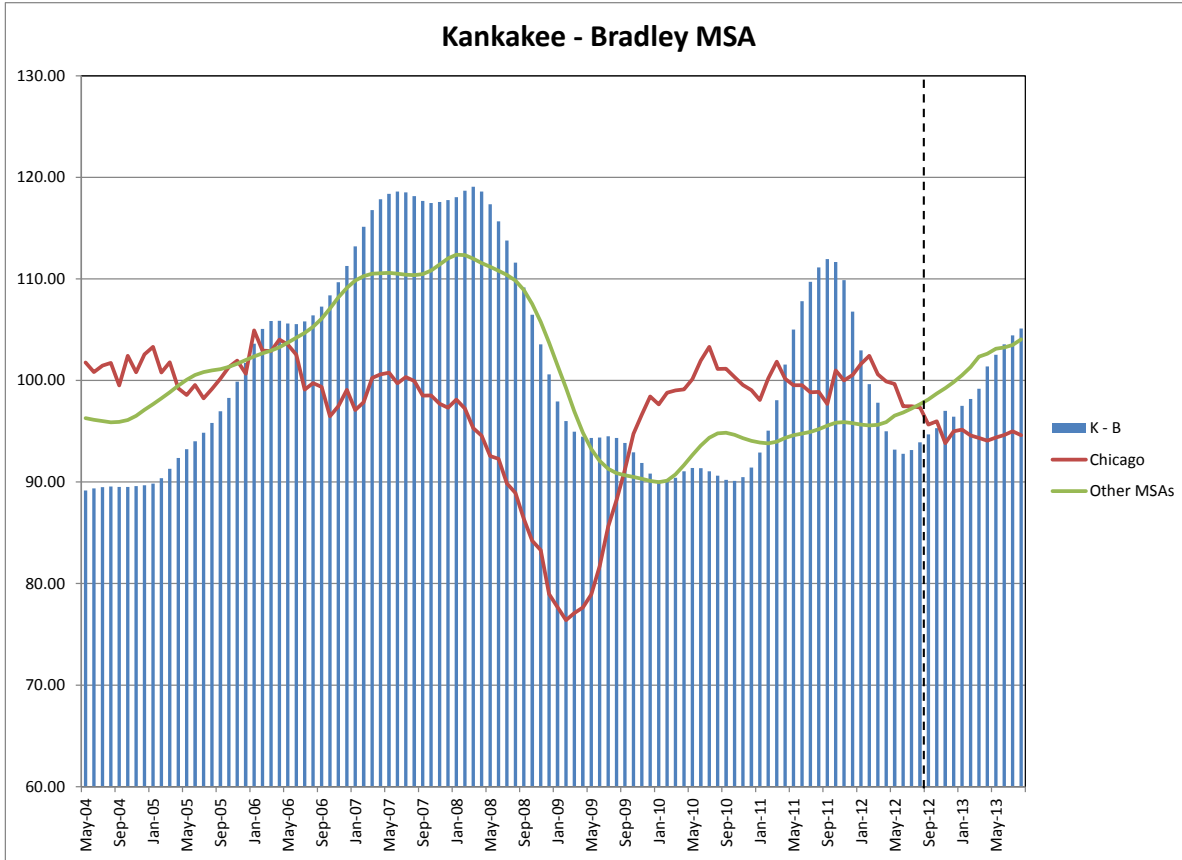


Decatur MSA League: Non-Farm Employment Growth Rate

- Compared to the previous month, Decatur in August moved up 1 position reaching the first place in the rank.
- In the 12 months growth league table, Decatur remained in the last place in the rank.

❖ **Kankakee - Bradley (Reference Month – Aug 2012)**

Current	93.90		
	1 Month	3 Month	1 Year
Historical	93.15	93.20	111.14
Forecast	94.68	97.01	92.28 ~ 110.48

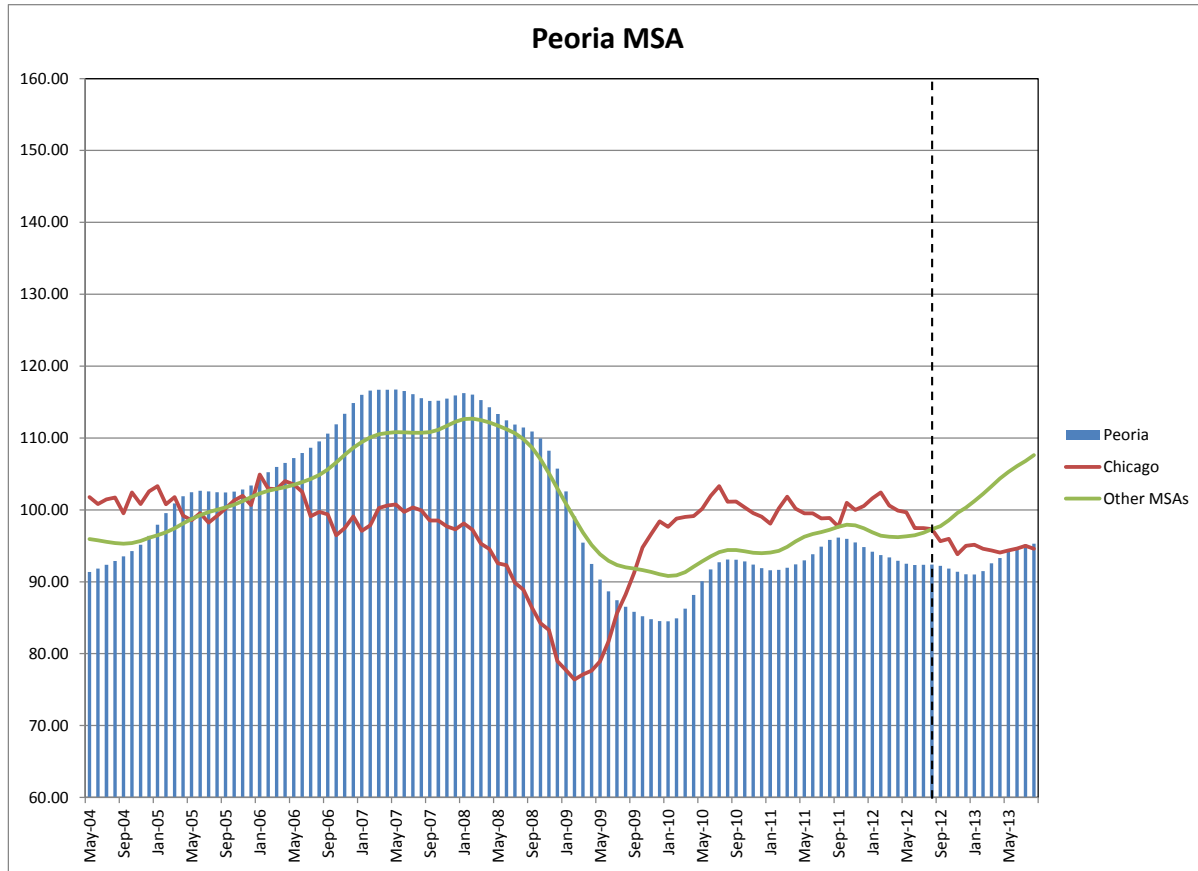


Kankakee - Bradley MSA League: Non-Farm Employment Growth Rate

- Compared to last month, Kankakee – Bradley remained in the 9th place in the rank.
- In the 12 months growth league table, Kankakee– Bradley moving down 3 positions reaching the 5th position of the rank.

❖ **Peoria (Reference Month – Aug 2012)**

Current	92.39		
	1 Month	3 Month	1 Year
Historical	92.37	92.52	95.81
Forecast	92.21	91.39	92.92 ~ 103.83

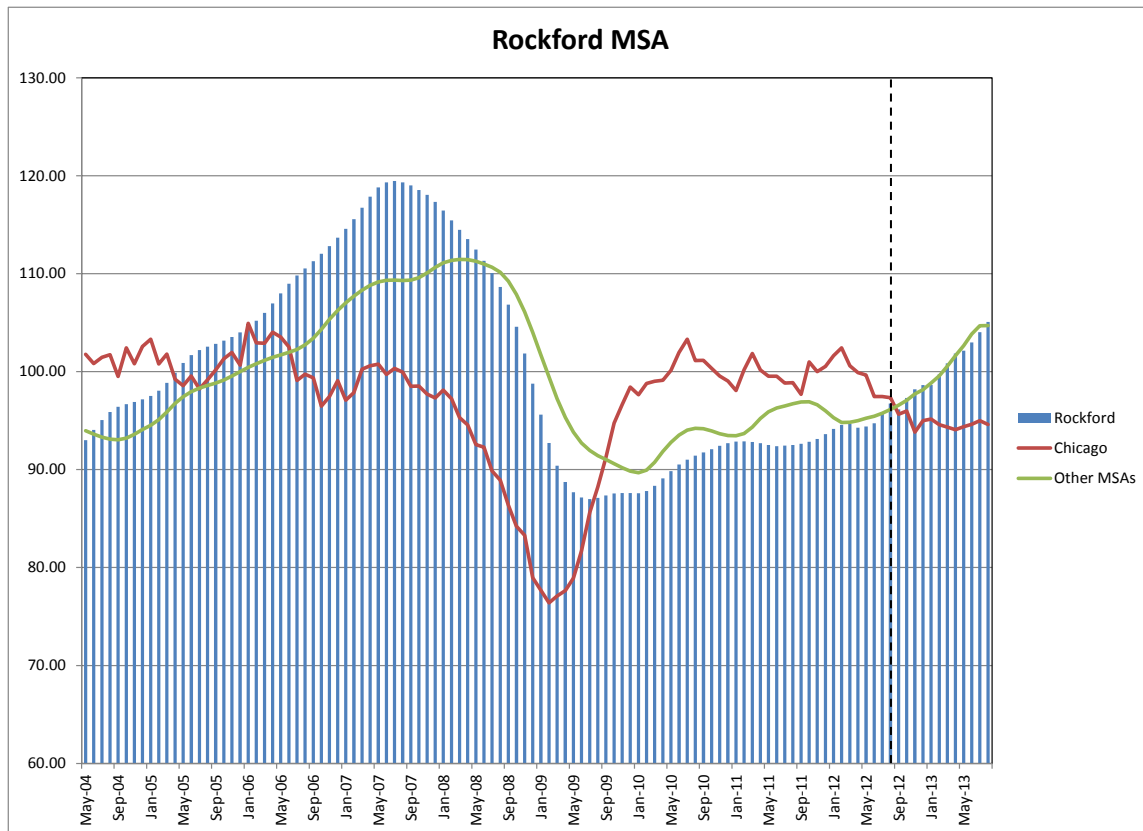


Peoria MSA League: Non-Farm Employment Growth Rate

- Peoria in August moved up 5 positions reaching the 2nd place in the rank.
- In the 12 months growth league table, Peoria remained in the 1st place in the rank.

❖ **Rockford (Reference Month – Aug 2012)**

Current	96.73		
	1 Month	3 Month	1 Year
Historical	95.67	94.40	92.52
Forecast	96.14	98.19	94.93 ~ 111.61

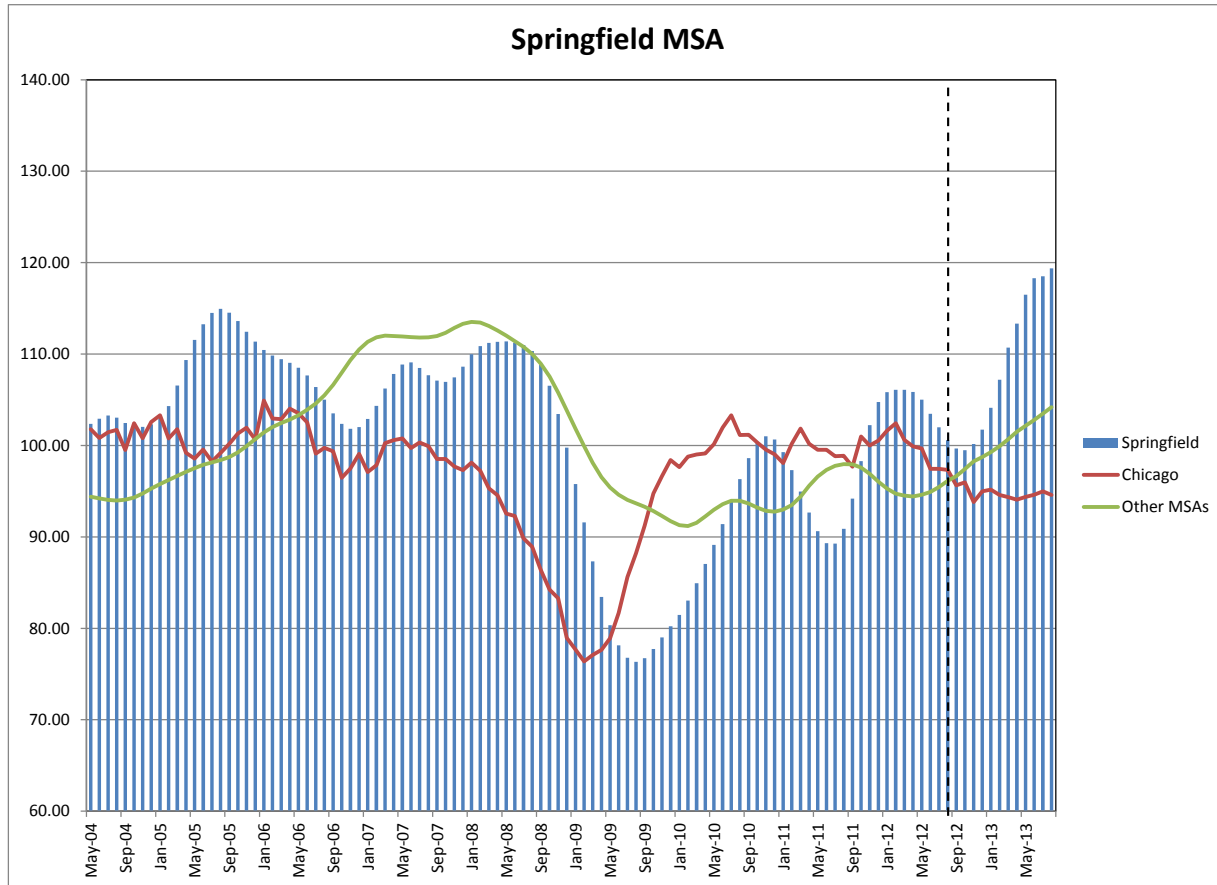


Rockford MSA League: Non-Farm Employment Growth Rate

- Rockford lost in August by moving down 9 positions, reaching the last place of the rank.
- In the 12 months growth league table, Rockford moved up 1 position reaching in the 2nd place in the rank.

❖ **Springfield (Reference Month – Aug 2012)**

Current	100.58		
	1 Month	3 Month	1 Year
Historical	101.98	105.01	90.88
Forecast	99.67	100.16	109.24 ~ 127.35



Springfield MSA League: Non-Farm Employment Growth Rate

- Springfield dropped 1 position in the rank of August reaching the 4th place.
- In the 12 months growth league table Springfield remained in the 7th place in the rank.

Notes:

- MSA Indices series are available in the appendix.

Appendix

month	B - N	C - U	D-RI-M	Decatur	Peoria	Rockford	Springfield	K-B
May-04	96.92	101.59	88.35	101.39	91.37	93.01	102.37	89.17
Jun-04	95.37	101.94	88.77	98.88	91.83	94.04	102.94	89.37
Jul-04	93.86	102.32	89.30	96.59	92.35	95.06	103.27	89.50
Aug-04	92.60	102.80	90.00	94.77	92.88	95.88	103.04	89.56
Sep-04	91.78	103.39	91.05	93.51	93.55	96.40	102.45	89.51
Oct-04	91.49	103.93	92.38	92.63	94.28	96.69	102.10	89.50
Nov-04	92.09	104.12	93.80	92.24	95.16	96.89	102.04	89.59
Dec-04	93.26	103.86	95.11	92.22	96.39	97.16	102.33	89.69
Jan-05	94.51	103.02	96.08	92.11	97.92	97.52	102.96	89.84
Feb-05	95.41	102.24	96.88	91.71	99.55	98.06	104.32	90.38
Mar-05	95.69	101.56	97.65	91.37	100.90	98.85	106.56	91.30
Apr-05	95.61	101.00	98.77	90.92	101.90	99.88	109.35	92.37
May-05	95.54	100.71	100.12	90.40	102.46	100.88	111.56	93.23
Jun-05	95.62	100.70	101.54	89.76	102.66	101.68	113.26	94.00
Jul-05	95.68	100.82	103.01	88.81	102.58	102.21	114.49	94.84
Aug-05	95.97	101.20	104.27	87.61	102.44	102.55	114.94	95.82
Sep-05	96.67	101.91	105.26	86.42	102.42	102.84	114.53	96.95
Oct-05	97.92	102.94	105.77	85.63	102.54	103.16	113.62	98.28
Nov-05	99.67	103.85	105.94	85.39	102.83	103.53	112.44	99.87
Dec-05	101.67	104.33	106.07	85.32	103.40	104.00	111.36	101.73
Jan-06	103.47	104.52	106.11	85.22	104.26	104.57	110.46	103.62
Feb-06	104.76	104.59	106.17	85.01	105.23	105.21	109.84	105.07
Mar-06	105.04	104.62	106.25	85.36	105.97	105.99	109.44	105.85
Apr-06	104.89	104.93	106.43	86.00	106.54	106.96	109.03	105.87
May-06	104.90	105.49	106.90	86.82	107.21	107.99	108.50	105.60
Jun-06	105.27	106.46	107.45	87.54	107.92	108.98	107.66	105.54
Jul-06	106.00	107.94	107.73	88.05	108.65	109.81	106.40	105.80
Aug-06	107.28	109.92	108.28	88.33	109.52	110.54	105.00	106.41
Sep-06	109.17	112.37	109.40	88.40	110.62	111.27	103.50	107.28
Oct-06	111.25	115.17	111.10	88.36	111.90	112.02	102.36	108.37
Nov-06	113.30	117.76	112.76	88.43	113.37	112.81	101.83	109.67
Dec-06	115.17	119.47	113.44	88.65	114.86	113.67	102.00	111.28
Jan-07	116.43	120.04	113.36	88.99	116.01	114.58	102.91	113.19
Feb-07	116.92	119.50	112.92	89.39	116.59	115.57	104.35	115.13
Mar-07	116.57	118.19	112.42	89.76	116.73	116.72	106.23	116.76
Apr-07	115.69	116.32	112.20	90.15	116.71	117.87	107.81	117.85
May-07	114.57	114.53	112.60	90.66	116.75	118.80	108.86	118.38
Jun-07	113.44	112.99	113.37	91.36	116.55	119.33	109.10	118.60
Jul-07	112.96	111.81	114.25	92.14	116.11	119.46	108.49	118.51
Aug-07	113.11	111.08	115.00	93.01	115.53	119.32	107.68	118.15
Sep-07	113.78	111.03	115.25	93.96	115.15	119.00	107.10	117.67
Oct-07	114.86	111.77	115.37	94.94	115.18	118.54	106.95	117.47
Nov-07	116.18	113.04	115.83	95.67	115.49	118.04	107.45	117.58
Dec-07	117.17	114.31	116.49	95.98	115.92	117.32	108.62	117.75
Jan-08	117.40	115.19	117.04	96.07	116.24	116.45	109.98	118.05
Feb-08	116.86	115.49	117.13	96.17	116.04	115.44	110.88	118.68

Mar-08	115.86	115.18	116.68	96.61	115.29	114.47	111.23	119.07
Apr-08	115.12	114.51	116.07	97.29	114.29	113.53	111.34	118.61
May-08	115.04	113.47	115.53	98.10	113.33	112.47	111.39	117.35
Jun-08	115.28	112.12	115.05	98.98	112.47	111.31	111.26	115.66
Jul-08	115.33	110.50	114.81	99.95	111.87	110.06	110.99	113.77
Aug-08	114.96	108.68	114.55	100.85	111.46	108.65	110.32	111.60
Sep-08	114.09	106.36	114.05	101.82	110.92	106.84	108.87	109.15
Oct-08	112.94	103.51	113.11	102.74	109.94	104.58	106.54	106.46
Nov-08	111.42	100.87	111.63	103.52	108.23	101.85	103.44	103.55
Dec-08	109.71	98.88	109.45	104.43	105.73	98.78	99.76	100.60
Jan-09	107.84	97.21	106.53	105.80	102.58	95.61	95.79	97.93
Feb-09	105.93	96.00	103.12	107.64	99.08	92.72	91.58	95.99
Mar-09	103.88	94.73	99.76	108.71	95.45	90.39	87.33	94.96
Apr-09	101.74	93.53	96.94	109.30	92.49	88.74	83.44	94.47
May-09	99.94	92.87	94.62	109.69	90.31	87.69	80.34	94.34
Jun-09	98.68	92.35	92.65	110.12	88.66	87.15	78.14	94.37
Jul-09	97.81	91.80	91.15	110.67	87.43	86.99	76.79	94.49
Aug-09	97.07	91.19	90.10	111.52	86.51	87.11	76.33	94.34
Sep-09	96.12	90.19	89.54	112.70	85.82	87.36	76.74	93.85
Oct-09	94.80	88.93	89.19	113.96	85.21	87.56	77.74	92.93
Nov-09	93.37	87.50	88.80	115.13	84.78	87.61	79.00	91.87
Dec-09	91.96	86.18	88.38	115.90	84.54	87.60	80.22	90.83
Jan-10	91.31	85.20	88.08	115.53	84.50	87.59	81.47	90.14
Feb-10	91.58	84.81	88.17	113.97	84.93	87.81	83.03	90.02
Mar-10	92.64	85.38	88.48	111.80	86.26	88.35	84.92	90.41
Apr-10	94.36	86.63	88.82	109.53	88.16	89.09	87.05	91.04
May-10	96.05	88.08	89.04	107.78	90.08	89.85	89.14	91.38
Jun-10	97.30	89.46	89.16	106.73	91.71	90.52	91.40	91.36
Jul-10	97.71	90.38	89.43	106.46	92.72	91.02	93.91	91.06
Aug-10	97.02	90.58	89.59	106.46	93.09	91.42	96.32	90.61
Sep-10	95.23	90.30	89.49	106.56	93.07	91.74	98.61	90.21
Oct-10	93.06	89.66	89.31	106.49	92.83	92.08	100.27	90.11
Nov-10	91.19	89.02	89.16	106.36	92.39	92.43	101.01	90.47
Dec-10	89.99	88.55	89.27	106.68	91.88	92.70	100.66	91.42
Jan-11	89.34	88.40	89.50	107.63	91.60	92.86	99.28	92.90
Feb-11	89.39	88.29	89.70	108.98	91.66	92.88	97.31	95.06
Mar-11	90.70	88.28	90.30	110.50	91.94	92.81	94.95	98.05
Apr-11	92.28	88.37	91.54	112.21	92.43	92.70	92.67	101.57
May-11	93.25	88.51	92.86	113.51	92.98	92.51	90.62	105.00
Jun-11	93.34	88.58	93.90	114.13	93.83	92.38	89.33	107.79
Jul-11	92.91	88.70	94.13	114.34	94.89	92.44	89.27	109.71
Aug-11	92.21	88.83	93.72	114.52	95.81	92.52	90.88	111.14
Sep-11	91.52	89.04	93.01	114.33	96.15	92.64	94.20	111.95
Oct-11	90.58	89.19	92.12	113.89	95.96	92.83	98.29	111.67
Nov-11	89.06	89.29	91.26	113.12	95.47	93.13	102.22	109.87
Dec-11	87.13	89.63	90.97	112.02	94.82	93.61	104.75	106.77
Jan-12	85.28	90.46	91.43	110.72	94.19	94.15	105.83	102.96
Feb-12	83.71	91.73	92.47	109.13	93.70	94.56	106.10	99.64
Mar-12	82.81	93.54	93.71	107.47	93.39	94.66	106.09	97.80

Apr-12	83.24	95.95	94.88	106.19	92.93	94.28	105.85	94.99
May-12	84.62	98.21	95.70	104.80	92.52	94.40	105.01	93.20
Jun-12	86.64	99.93	95.45	103.54	92.33	94.72	103.46	92.77
Jul-12	89.33	101.10	94.66	102.62	92.37	95.67	101.98	93.15
Aug-12	92.48	102.25	93.54	102.23	92.39	96.73	100.58	93.90
Sep-12	95.61	103.51	92.56	102.44	92.21	96.14	99.67	94.68
Oct-12	98.13	104.90	92.04	103.26	91.85	97.30	99.49	95.30
Nov-12	99.71	106.33	92.12	104.10	91.39	98.19	100.16	97.01
Dec-12	100.39	107.69	92.75	105.31	91.04	98.63	101.72	96.44
Jan-13	100.45	108.82	93.85	105.88	91.00	98.65	104.12	97.50
Feb-13	100.20	109.61	95.30	106.08	91.48	99.74	107.20	98.18
Mar-13	99.89	109.99	97.04	106.25	92.57	100.85	110.71	99.18
Apr-13	99.73	110.01	99.02	106.07	93.31	101.85	113.32	101.37
May-13	99.93	109.83	101.23	105.66	94.46	102.13	116.49	102.54
Jun-13	100.63	109.64	103.60	104.94	94.83	102.99	118.30	103.55
Jul-13	101.85	109.66	105.99	103.92	95.18	104.02	118.50	104.43
Aug-13	103.49	110.01	108.21	102.89	95.31	105.07	119.37	105.12

Notes

B-N=Bloomington-Normal

C-U=Champaign-Urbana

K-B= Kankakee-Bradley

D-RI-M=Davenport-Rock Island-Moline