

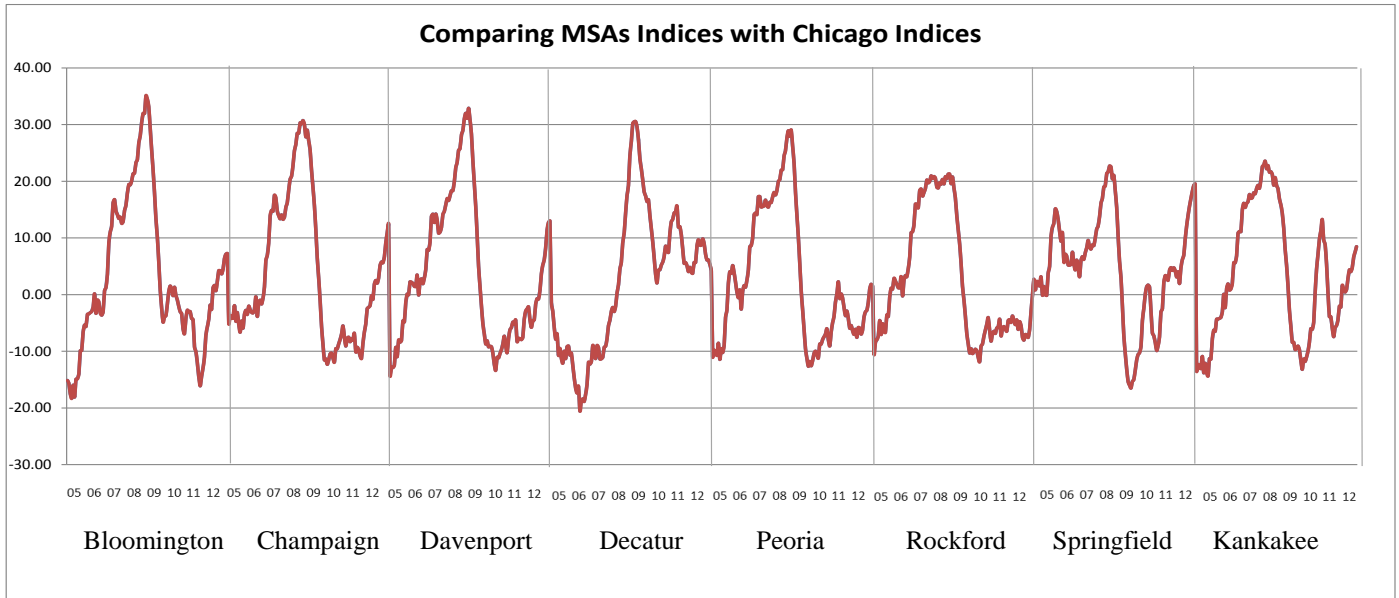
ILLINOIS

MSA Indices & Forecast

R | E | A | L

Release 11/15/2012	data May 2004 / Sep 2012	Issue 2012.11	www.real.illinois.edu
------------------------------	------------------------------------	-------------------------	------------------------------

Note: Values shown on the "1 Year" forecast represent a pessimistic – optimistic scenario. For estimated values please see Appendix.

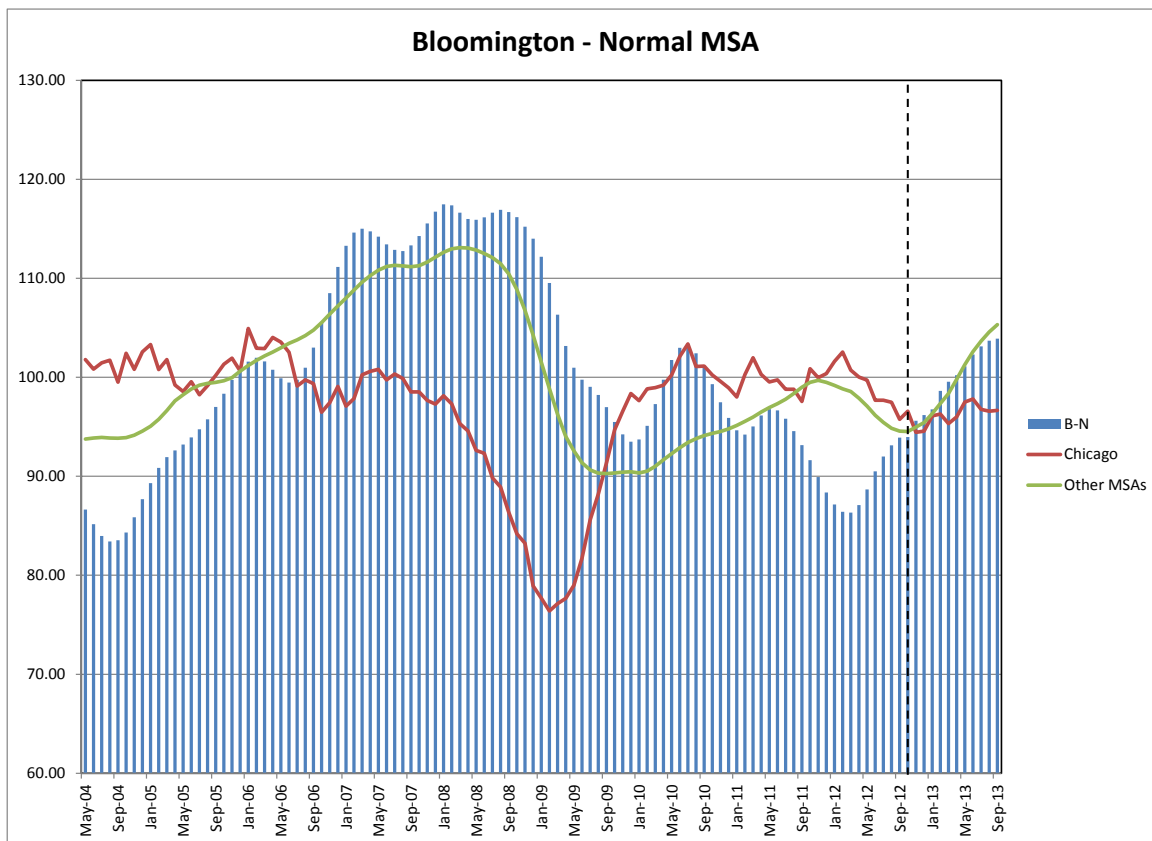


*When figures dropping zero represents that MSAs are doing worse than Chicago; when figures rising above zero represents that MSAs are doing better than Chicago.

- Before Jan 2008, MSA Decatur performed worse than Chicago. However, after Jan 2008, it started performing better than Chicago.
- From early 2007 to early 2009, MSA Bloomington, Champaign-Urbana-Rantoul, Davenport, Peoria, Rockford, Springfield and Kankakee performed better than Chicago.
- However, from Mid-2009 to late-2011, these MSAs performed worse than Chicago.
- According to the forecast for Aug 2013, MSA Bloomington, Champaign-Urbana-Rantoul, Davenport-Rock Island-Moline, Decatur, Springfield and Kankakee will do better than Chicago by Aug 2013. MSA Peoria and Rockford is likely to perform no better than Chicago.

❖ **Bloomington-Normal (Reference Month – Sep 2012)**

Current	93.91		
	1 Month	3 Month	1 Year
Historical	93.12	90.49	93.14
Forecast	93.97	96.19	91.32 ~ 110.74

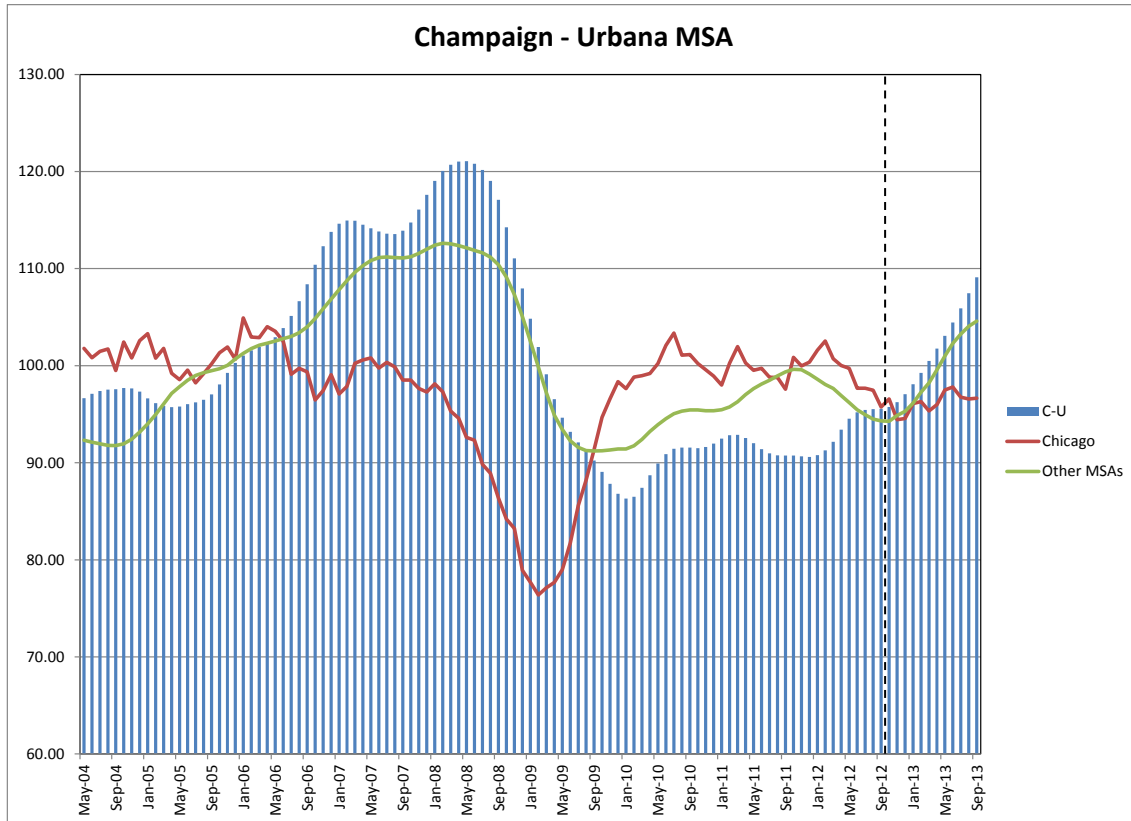


Bloomington-Normal MSA League: Non-Farm Employment Growth Rate:

- Bloomington-Normal in September moving down 6 positions reaching the 9th place of the rank.
- In the 12 month growth league table Bloomington-Normal moving down 3 positions reaching the 6th place of the rank.

❖ **Champaign-Urbana (Reference Month – Sep 2012)**

Current	95.56		
	1 Month	3 Month	1 Year
Historical	95.53	95.20	90.74
Forecast	95.74	97.07	98.31 ~ 121.07

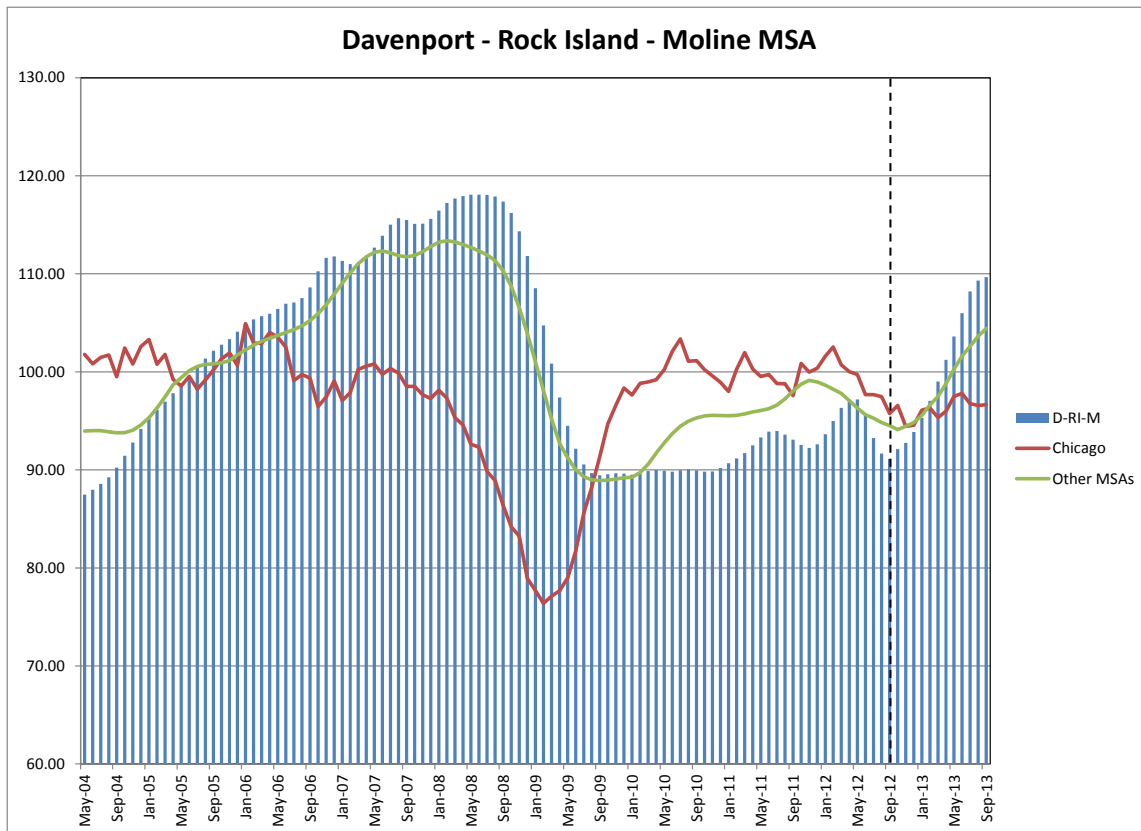


Champaign- Urbana MSA League: Non-Farm Employment Growth Rate:

- Champaign-Urbana-Rantoul moving up 4 positions reaching the 4th place in the rank.
- In the 12 months growth league table, Champaign-Urbana-Rantoul moving up 1 position reaching the 7th place of the rank.

❖ **Davenport-Rock Island-Moline (Reference Month – Sep 2012)**

Current	91.13		
	1 Month	3 Month	1 Year
Historical	91.67	95.52	93.08
Forecast	92.12	93.85	104.36 ~ 118.43

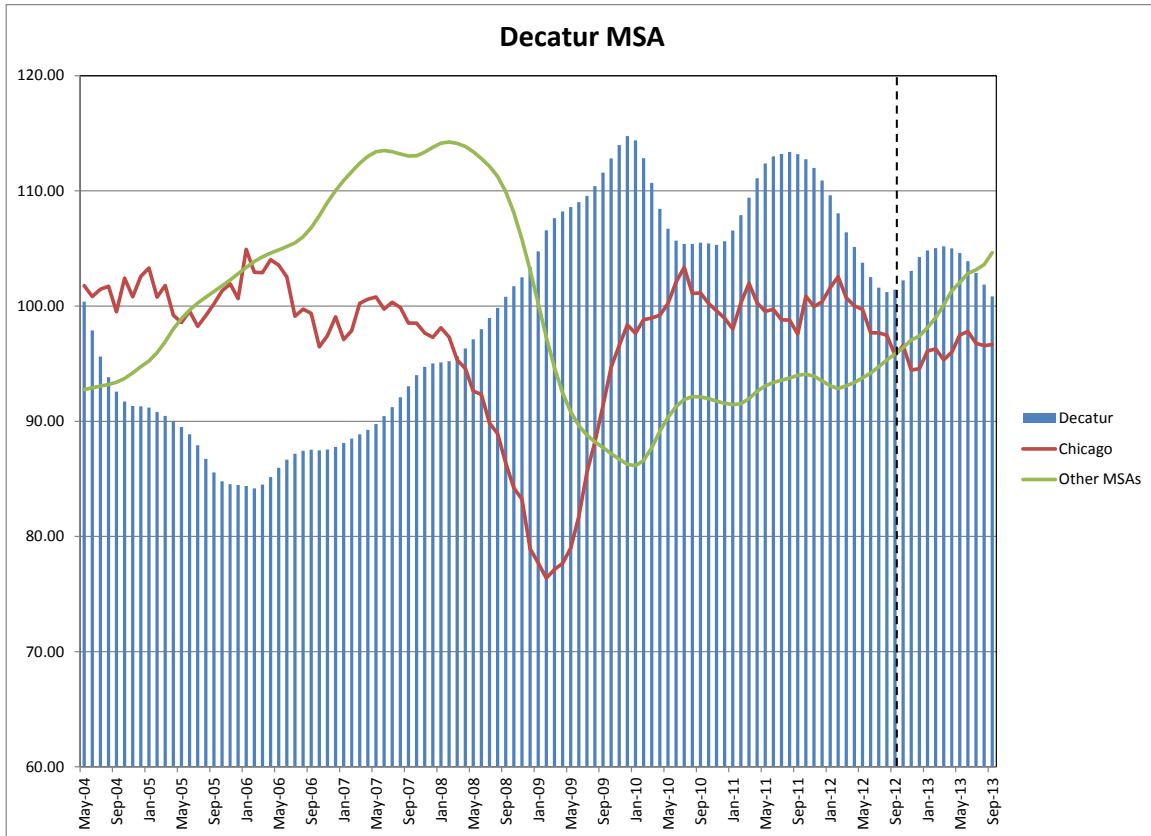


Davenport – Rock Island–Moline MSA League: Non-Farm Employment Growth Rate:

- Davenport-Rock Island-Moline in September moving up 4 positions reaching the 3rd place in the rank.
- In the 12 months growth league table, Davenport – Rock Island – Moline moved down 3 positions to the 9th place in the rank.

❖ **Decatur (Reference Month – Aug 2012)**

Current	101.42		
	1 Month	3 Month	1 Year
Historical	101.22	102.51	113.19
Forecast	102.23	104.26	95.77 ~ 110.78

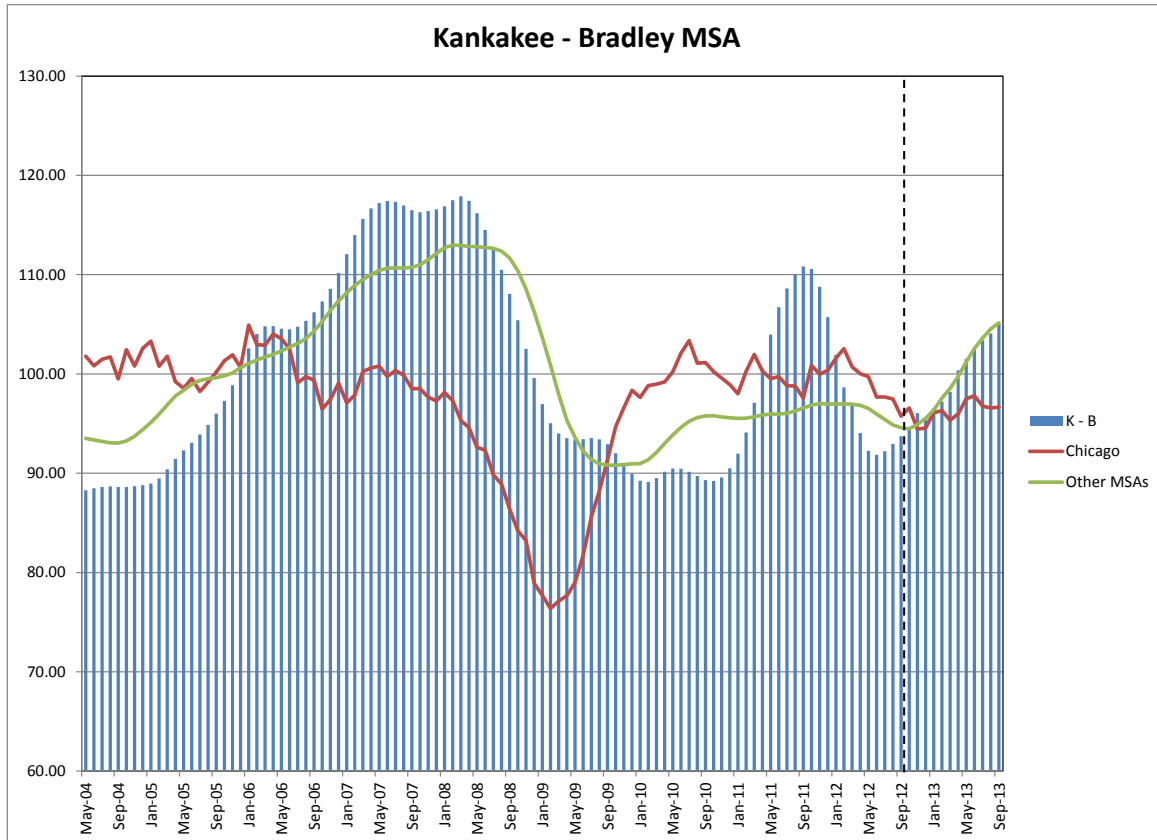


Decatur MSA League: Non-Farm Employment Growth Rate

- Compared to the previous month, Decatur in September moved down 5 positions reaching the 6th place in the rank.
- In the 12 months growth league table, Decatur remained in the last place in the rank.

❖ **Kankakee - Bradley (Reference Month – Sep 2012)**

Current	93.74		
	1 Month	3 Month	1 Year
Historical	92.97	91.85	110.83
Forecast	94.35	95.48	95.16 ~ 111.77

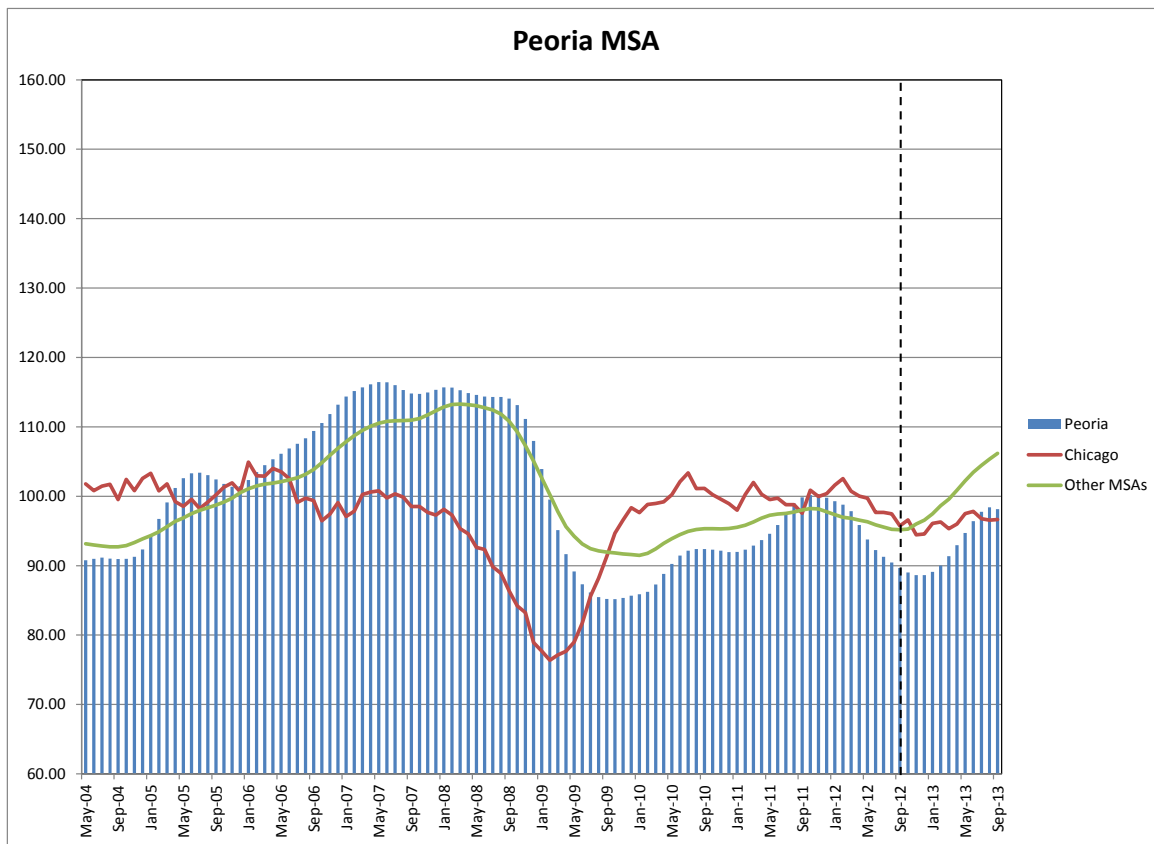


Kankakee - Bradley MSA League: Non-Farm Employment Growth Rate

- Compared to last month, Kankakee – Bradley moved up 8 positions reaching the 1st place in the rank.
- In the 12 months growth league table, Kankakee– Bradley moving up 3 positions reaching the 2nd position of the rank.

❖ **Peoria (Reference Month – Sep 2012)**

Current	89.65		
	1 Month	3 Month	1 Year
Historical	90.44	92.25	99.85
Forecast	89.01	88.63	87.45 ~ 100.13

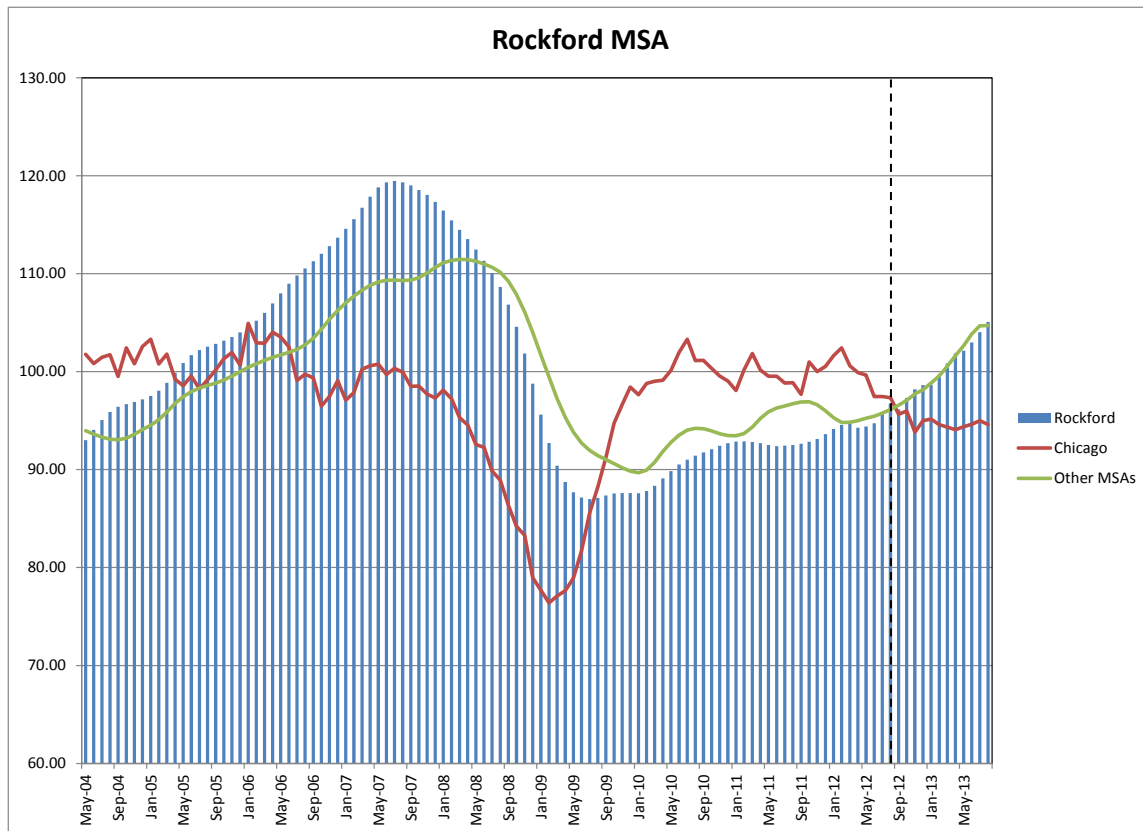


Peoria MSA League: Non-Farm Employment Growth Rate

- Peoria in September moved down 8 positions reaching the last place in the rank.
- In the 12 months growth league table, Peoria moved down 4 positions reaching the 5th place in the rank.

❖ **Rockford (Reference Month – Sep 2012)**

Current	91.26		
	1 Month	3 Month	1 Year
Historical	92.17	93.93	93.24
Forecast	90.41	89.05	91.71 ~ 107.67

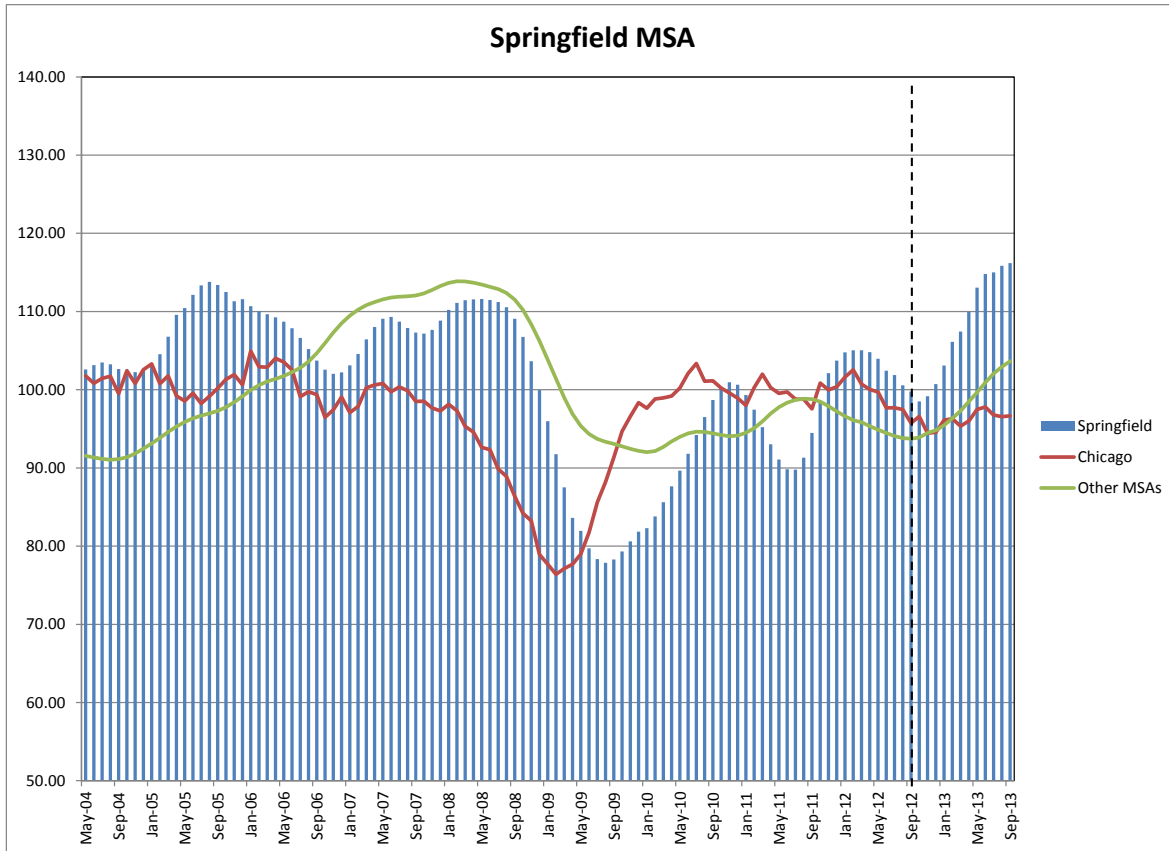


Rockford MSA League: Non-Farm Employment Growth Rate

- Rockford moving up 2 positions, reaching the 8th place of the rank.
- In the 12 months growth league table, Rockford moved up 1 position reaching in the 1st place in the rank.

❖ **Springfield (Reference Month – Sep 2012)**

Current	99.77		
	1 Month	3 Month	1 Year
Historical	100.55	102.43	94.48
Forecast	98.50	100.71	108.01 ~ 120.13



Springfield MSA League: Non-Farm Employment Growth Rate

- Springfield gained 2 positions in the rank of September reaching the 2nd place.
- In the 12 months growth league table Springfield gained 4 positions reaching the 3rd place in the rank.

Notes:

- MSA Indices series are available in the appendix.

Appendix

month	B - N	C - U	D-RI-M	Decatur	Peoria	Rockford	Springfield	K-B
May-04	86.63	96.66	87.47	100.38	90.79	91.35	102.58	88.28
Jun-04	85.17	97.11	87.97	97.89	91.00	92.42	103.14	88.48
Jul-04	83.97	97.39	88.56	95.62	91.15	93.49	103.48	88.61
Aug-04	83.42	97.54	89.24	93.82	91.01	94.36	103.25	88.67
Sep-04	83.54	97.58	90.23	92.58	90.96	94.96	102.66	88.62
Oct-04	84.33	97.69	91.44	91.71	90.98	95.35	102.30	88.61
Nov-04	85.87	97.66	92.79	91.33	91.27	95.69	102.25	88.69
Dec-04	87.68	97.33	94.16	91.30	92.33	96.11	102.53	88.79
Jan-05	89.31	96.64	95.20	91.19	94.32	96.60	103.17	88.95
Feb-05	90.86	96.14	96.12	90.79	96.73	97.20	104.53	89.48
Mar-05	91.93	95.85	96.96	90.46	99.11	97.90	106.77	90.39
Apr-05	92.61	95.72	97.83	90.02	101.20	98.78	109.56	91.45
May-05	93.20	95.80	98.68	89.50	102.60	99.71	110.45	92.30
Jun-05	93.92	96.03	99.52	88.87	103.29	100.51	112.14	93.07
Jul-05	94.75	96.21	100.49	87.92	103.38	101.10	113.35	93.90
Aug-05	95.76	96.49	101.35	86.74	103.05	101.56	113.80	94.86
Sep-05	97.01	97.04	102.14	85.56	102.42	102.00	113.39	95.99
Oct-05	98.34	98.08	102.77	84.78	101.77	102.51	112.49	97.30
Nov-05	99.74	99.27	103.35	84.54	101.36	103.11	111.32	98.88
Dec-05	100.81	100.27	104.11	84.47	101.47	103.83	111.58	100.72
Jan-06	101.59	101.04	104.82	84.37	102.33	104.65	110.68	102.59
Feb-06	101.98	101.58	105.36	84.16	103.47	105.46	110.06	104.02
Mar-06	101.60	101.92	105.68	84.51	104.49	106.26	109.66	104.80
Apr-06	100.75	102.33	105.92	85.15	105.32	107.16	109.25	104.82
May-06	99.90	102.94	106.43	85.96	106.13	108.17	108.72	104.55
Jun-06	99.48	103.87	106.96	86.67	106.90	109.17	107.87	104.49
Jul-06	99.76	105.12	107.07	87.18	107.57	110.03	106.62	104.75
Aug-06	100.97	106.64	107.52	87.45	108.36	110.80	105.21	105.35
Sep-06	102.99	108.40	108.61	87.52	109.40	111.60	103.71	106.21
Oct-06	105.61	110.39	110.25	87.48	110.56	112.45	102.57	107.29
Nov-06	108.49	112.31	111.64	87.55	111.83	113.37	102.03	108.58
Dec-06	111.15	113.78	111.77	87.77	113.18	114.39	102.21	110.17
Jan-07	113.28	114.62	111.32	88.11	114.37	115.44	103.12	112.07
Feb-07	114.63	114.95	110.99	88.50	115.15	116.51	104.55	113.98
Mar-07	115.00	114.93	111.09	88.87	115.70	117.62	106.44	115.60
Apr-07	114.73	114.53	111.63	89.25	116.13	118.64	108.03	116.68
May-07	114.21	114.15	112.67	89.76	116.46	119.50	109.08	117.20
Jun-07	113.43	113.83	113.89	90.46	116.43	119.96	109.32	117.42
Jul-07	112.88	113.60	115.01	91.22	116.00	120.05	108.70	117.33
Aug-07	112.75	113.56	115.67	92.09	115.30	119.85	107.89	116.97
Sep-07	113.33	113.91	115.48	93.03	114.82	119.48	107.32	116.50
Oct-07	114.27	114.75	115.10	94.00	114.75	119.00	107.16	116.30
Nov-07	115.54	116.07	115.11	94.72	114.95	118.51	107.66	116.41
Dec-07	116.72	117.61	115.62	95.03	115.33	117.85	108.84	116.58
Jan-08	117.47	119.04	116.44	95.11	115.68	117.07	110.20	116.87

Feb-08	117.37	120.07	117.24	95.21	115.67	116.11	111.10	117.50
Mar-08	116.63	120.69	117.69	95.65	115.28	115.08	111.45	117.88
Apr-08	115.99	121.04	117.93	96.32	114.87	114.04	111.56	117.43
May-08	115.91	121.08	118.08	97.12	114.59	112.95	111.62	116.18
Jun-08	116.16	120.79	118.07	98.00	114.36	111.83	111.48	114.51
Jul-08	116.62	120.16	118.04	98.96	114.30	110.66	111.22	112.64
Aug-08	116.91	119.03	117.88	99.85	114.30	109.35	110.54	110.49
Sep-08	116.68	117.09	117.37	100.81	114.06	107.65	109.08	108.07
Oct-08	116.19	114.25	116.20	101.71	113.13	105.47	106.75	105.40
Nov-08	115.20	111.05	114.33	102.49	111.15	102.79	103.65	102.52
Dec-08	114.01	107.96	111.82	103.39	107.98	99.70	99.96	99.60
Jan-09	112.17	104.84	108.53	104.75	103.93	96.49	95.98	96.95
Feb-09	109.53	101.93	104.73	106.57	99.51	93.48	91.77	95.03
Mar-09	106.33	99.11	100.84	107.63	95.12	90.95	87.51	94.01
Apr-09	103.17	96.54	97.39	108.21	91.67	89.06	83.61	93.53
May-09	100.96	94.65	94.49	108.60	89.17	87.86	81.96	93.40
Jun-09	99.75	93.19	92.16	109.03	87.33	87.26	79.72	93.43
Jul-09	99.03	92.09	90.57	109.57	86.15	87.07	78.34	93.55
Aug-09	98.22	91.20	89.68	110.41	85.48	87.21	77.88	93.41
Sep-09	96.99	90.22	89.45	111.58	85.20	87.51	78.29	92.92
Oct-09	95.49	89.07	89.55	112.82	85.16	87.78	79.31	92.01
Nov-09	94.24	87.83	89.65	113.98	85.36	87.92	80.60	90.96
Dec-09	93.48	86.81	89.62	114.75	85.68	88.02	81.84	89.93
Jan-10	93.72	86.31	89.52	114.39	85.87	88.11	82.31	89.24
Feb-10	95.10	86.49	89.59	112.84	86.23	88.40	83.81	89.12
Mar-10	97.29	87.42	89.87	110.69	87.29	88.91	85.62	89.51
Apr-10	99.75	88.71	89.99	108.44	88.81	89.58	87.66	90.14
May-10	101.75	89.92	89.90	106.71	90.25	90.30	89.65	90.47
Jun-10	102.98	90.88	89.83	105.67	91.45	90.97	91.81	90.45
Jul-10	103.15	91.43	89.97	105.40	92.16	91.52	94.21	90.15
Aug-10	102.41	91.56	90.04	105.40	92.38	91.99	96.50	89.71
Sep-10	101.00	91.55	89.95	105.50	92.38	92.41	98.68	89.32
Oct-10	99.30	91.51	89.82	105.43	92.31	92.86	100.26	89.22
Nov-10	97.48	91.63	89.84	105.30	92.14	93.34	100.96	89.57
Dec-10	95.90	91.97	90.18	105.62	91.96	93.71	100.63	90.51
Jan-11	94.63	92.50	90.68	106.56	91.99	93.95	99.32	91.98
Feb-11	94.22	92.84	91.17	107.90	92.31	93.96	97.45	94.11
Mar-11	95.04	92.88	91.70	109.40	92.90	93.73	95.20	97.07
Apr-11	96.14	92.55	92.50	111.09	93.69	93.41	93.02	100.56
May-11	96.78	92.02	93.31	112.38	94.59	93.06	91.07	103.96
Jun-11	96.65	91.40	93.91	112.99	95.87	92.85	89.83	106.72
Jul-11	95.80	90.97	93.96	113.20	97.44	92.91	89.78	108.62
Aug-11	94.57	90.76	93.60	113.38	98.96	93.02	91.32	110.03
Sep-11	93.14	90.74	93.08	113.19	99.85	93.24	94.48	110.83
Oct-11	91.62	90.75	92.55	112.76	100.16	93.56	98.37	110.56
Nov-11	89.92	90.67	92.23	111.99	100.10	94.03	102.11	108.78
Dec-11	88.37	90.61	92.60	110.90	99.78	94.73	103.71	105.71
Jan-12	87.16	90.78	93.64	109.62	99.29	95.50	104.77	101.93
Feb-12	86.41	91.27	94.99	108.05	98.80	96.08	105.05	98.65

Mar-12	86.33	92.15	96.33	106.40	97.84	96.15	105.03	96.83
Apr-12	87.09	93.41	97.15	105.13	95.84	95.61	104.80	94.05
May-12	88.67	94.54	97.19	103.76	93.77	94.79	103.97	92.27
Jun-12	90.49	95.20	95.52	102.51	92.25	93.93	102.43	91.85
Jul-12	92.00	95.44	93.25	101.60	91.28	93.08	101.88	92.23
Aug-12	93.12	95.53	91.67	101.22	90.44	92.17	100.55	92.97
Sep-12	93.91	95.56	91.13	101.42	89.65	91.26	99.77	93.74
Oct-12	93.97	95.74	92.12	102.23	89.01	90.41	98.50	94.35
Nov-12	95.61	96.25	92.75	103.06	88.63	89.67	99.16	96.05
Dec-12	96.19	97.07	93.85	104.26	88.63	89.05	100.71	95.48
Jan-13	96.77	98.10	95.30	104.83	89.10	88.55	103.08	96.53
Feb-13	98.62	99.25	97.04	105.02	90.03	88.24	106.13	97.20
Mar-13	99.55	100.48	99.02	105.19	91.35	88.28	107.44	98.19
Apr-13	100.20	101.76	101.23	105.01	92.96	88.82	109.97	100.37
May-13	101.12	103.08	103.60	104.61	94.72	89.93	113.05	101.52
Jun-13	102.30	104.46	105.99	103.90	96.42	91.62	114.80	102.52
Jul-13	103.11	105.91	108.21	102.89	97.75	93.82	115.00	103.39
Aug-13	103.70	107.46	109.31	101.86	98.41	96.42	115.84	104.07
Sep-13	103.91	109.10	109.65	100.84	98.14	99.37	116.18	105.13

Notes

B-N=Bloomington-Normal

C-U=Champaign-Urbana

K-B= Kankakee-Bradley

D-RI-M=Davenport-Rock Island-Moline